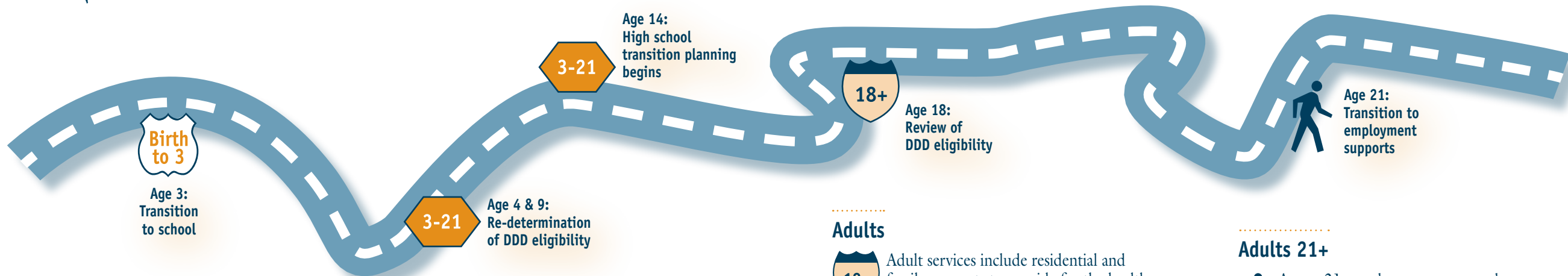




# ROAD MAP TO SERVICES



Eligibility for services is determined by an assessment completed by your DDD Case Resource Manager. Availability of services may be limited by funding or enrollment limits.



## Infants & Toddlers



The Infant & Toddler Early Intervention Program (ITEIP) provides early intervention services, including family resources coordination, for eligible children from birth to age 3 and their families.

If you have a concern about your child's development, please call 1-800-322-2588 and ask for the name of the Family Resources Coordinator (FRC) in your local area.

The FRC will assist you to determine if your child is eligible for early intervention services.

Age 4 & 9:  
Re-determination of DDD eligibility

## School Age Children

At age 3, the public school system assumes responsibility for education and related services. Check the Office of the Superintendent of Public Instruction for more information: <http://www.k12.wa.us>

In addition, your child may be eligible for:

- Medicaid Personal Care
- Family Support/Respite
- Home & Community Based Waiver Services

Age 14:  
High school transition planning begins

Age 18:  
Review of DDD eligibility

## Adults



Adult services include residential and family supports to provide for the health and safety needs of individuals. Supports vary from just a few hours a month up to 24-hour support and supervision per day.

### Home & Community Based



- Supported Living
- Group Homes
- Alternative Living
- Adult Family Homes
- Companion Homes
- Adult Residential Care



- Family Support/Respite



- Medicaid Personal Care

### Facility Based



- Residential Habilitation Centers
- Nursing Homes

Age 21:  
Transition to employment supports

## Adults 21+



At age 21, employment supports become available to eligible clients. All working age adults receiving these services are supported along a pathway to employment.



### Age 21-62

- Support & assistance to achieve meaningful employment
- Individual & Group Supported Employment
- Independent Employment

### Age 62+

- Community Access is also an option after age 62



### Case Resource Manager (CRM)

Each person who is eligible for DDD is assigned a CRM who is the key to accessing information, supports, and services based on available resources.



### Family Support/Respite

Flexible supports that include respite, therapies, and home modifications for individuals living with their families.



### Medicaid Personal Care (MPC)

MPC provides in-home assistance with activities of daily living such as bathing, dressing, cooking, and eating. You must have a Medicaid coupon to receive this service.



### Home & Community Based Waiver Services

Waiver services meet different levels of need to support children and adults living at home or in a community based setting. Waiver services include employment, supported living, skilled nursing, personal care, respite, and therapies.



# ROAD MAP TO SERVICES

PERSONAL CARE • RESPITE  
EMPLOYMENT • EARLY INTERVENTION  
SUPPORTED LIVING

*For Children & Adults  
with Developmental Disabilities*

Division of Developmental Disabilities

## OUR COMMITMENT TO YOU

The Division of Developmental Disabilities (DDD) is committed to making sure that your rights are protected.

As a DDD client, you must have a representative who can talk with you about the meaning of any change in your supports or services, as well as your appeal rights. If you don't have a representative, DDD will help you find one.

DDD will send you and your representative Planned Action Notices (PANs) every time there is a change in your services or eligibility. The notice will let you know what is happening, how to appeal if you disagree, and the timelines for appealing the decision.

Administrative/Fair Hearing rights allow you to appeal decisions regarding service changes. This information will be included in your PAN.


DDD also has a Complaint Policy, and you are encouraged to call your Case Resource Manager or that person's supervisor if you have any concerns other than service decisions.

Eligibility for services is determined by an assessment completed by your DDD Case Resource Manager. Sometimes, eligibility for a specific service is also based on income.

Availability of services may be limited by funding or enrollment limits.

*Nondiscrimination: It is the policy of the Department of Social and Health Services that no person shall be subjected to discrimination in this agency or its contractors because of race, color, national origin, gender, age, religion, creed, marital status, disabled or Vietnam Era Veteran status, or the presence of any physical, mental, or sensory handicap.*

## ABOUT THIS BROCHURE

 This brochure is a road map to services for individuals with developmental disabilities. Think of it as a bird's eye view of programs within DDD rather than a detailed description.

The map lays out programs and services by age ranges in order to give you a sense of what may be available at different stages of your life:

 **Infants & Toddlers**  
age Birth to 3

 **School Age Children**  
age 3 to 21

 **Adults over age 18**

 **Adults over age 21**

**For additional information, contact  
the DDD Regional Office where you live:**

- Region 1 • 1-800-462-0624
- Region 2 • 1-800-822-7840
- Region 3 • 1-800-788-2053
- Region 4 • 1-800-314-3296
- Region 5 • 1-800-248-0949
- Region 6 • 1-800-339-8227

You can also visit the DDD website:  
<http://www1.dshs.wa.gov/ddd/index.shtml>