

July, 2009

---

# Risk and Protection Profile for Substance Abuse Prevention in **San Juan County**



**4.47-28:2009**

Research & Data Analysis Division

**Vera Barga, B.S.**

**Irina V. Sharkova, Ph.D.**

**Liz Kohlenberg, Ph.D.**

*in conjunction with the*  
Division of Alcohol and Substance Abuse

**David Dickinson, Director**



**RDA** Research & Data  
Analysis Division

These tables provide a comprehensive update of data published in previous *Profiles*. They are among the timeliest data available to planners for understanding the risks of substance abuse among youth in their counties. Community, family, peer, and school-related factors are presented within the Hawkins and Catalano risk and protective factor framework that is used by many substance abuse prevention planners across the country.

For more information about the data, framework, definitions, and other topics, see the 1997 *Profile on Risk and Protection for Substance Abuse Prevention Planning in Washington State*, (Report 4.15-40). That report and subsequent years' Profiles are available on the RDA website at: [www1.dshs.wa.gov/rda/research/risk.shtm](http://www1.dshs.wa.gov/rda/research/risk.shtm).

## **Table of contents:**

### **Introduction**

### **Summary Measure and Indicator Profiles:**

1. Indicator Profile 1
2. Indicator Profile 2
3. Indicator Profile 3
4. Indicator Profile 4

### **Community:**

5. Availability of Drugs
6. Extreme Economic & Social Deprivation
7. Transitions & Mobility
8. Alcohol or Drug-related Problems
9. Adult Violent Crime
10. Low Neighborhood Attachment and Community Disorganization

### **Family:**

11. Family Problems

### **Schools:**

12. Senior Class Loss
13. Low School Test Scores

### **Individual/Peer:**

14. Early Criminal Justice Involvement

### **Problem Outcomes:**

15. Child and Family Health
16. School Issues
17. Criminal Justice
18. Substance Use

### **Appendices**

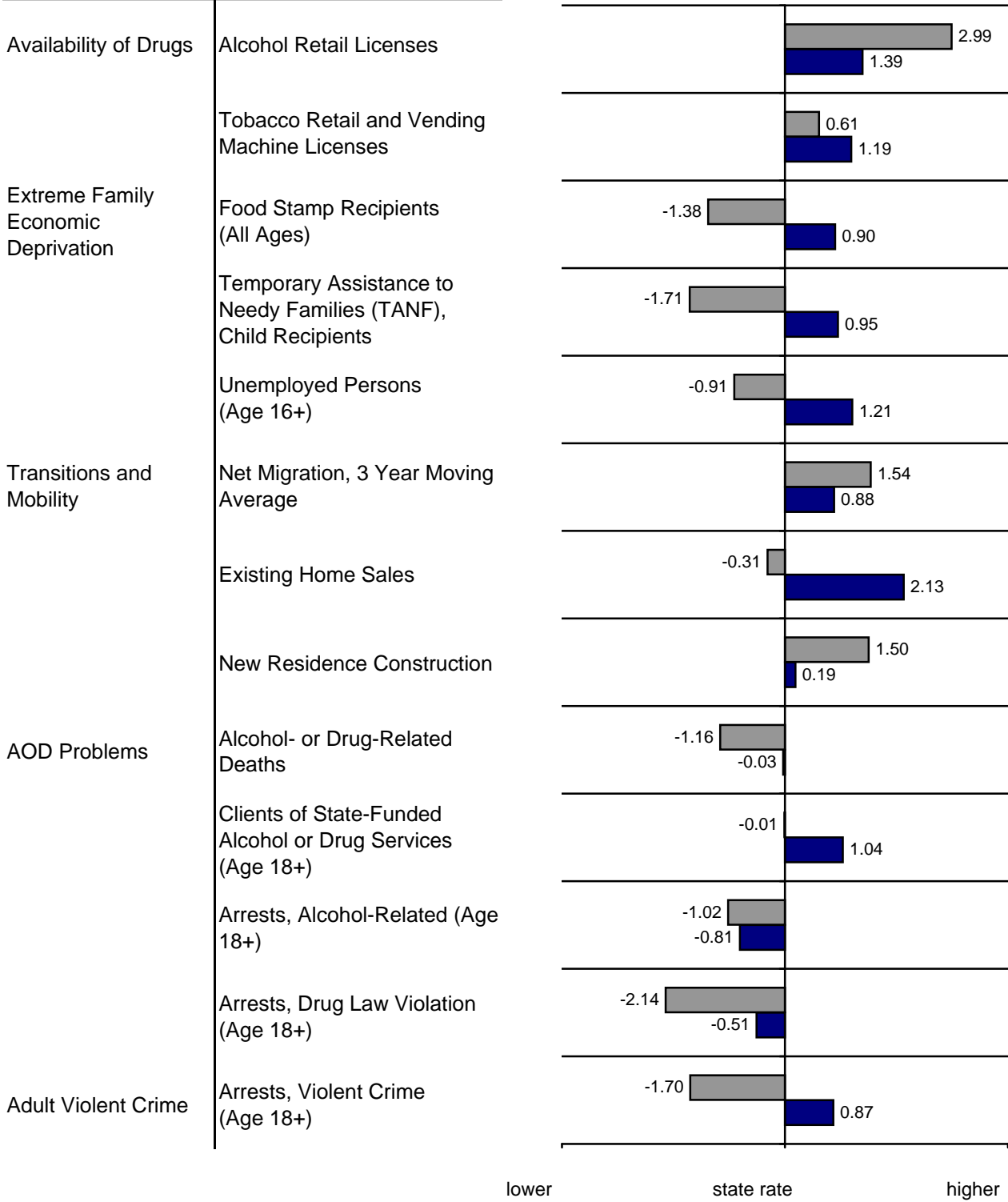
20. Technical Notes
21. Populations Subtracted for Police Agencies not Reporting Arrests to UCR
22. Police Agencies that did not Report Arrests to UCR

Standardized Five-Year Indicator Profile

**Domain/Factor      Indicators**

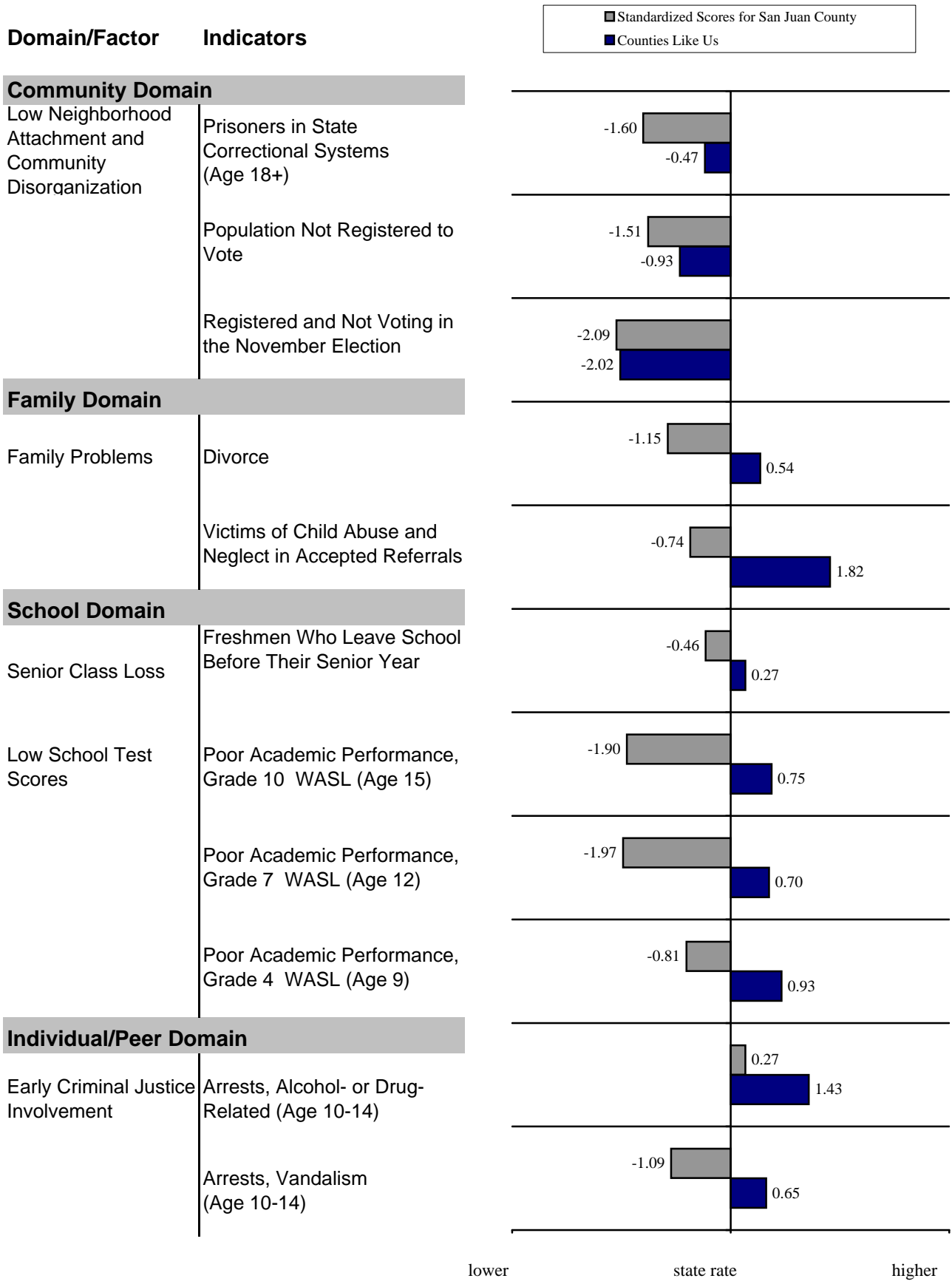


**Community Domain**



If the 5 year rate was suppressed for data problems, there will be no bar or label. Rates equal to the state mean have a 0.0 label.

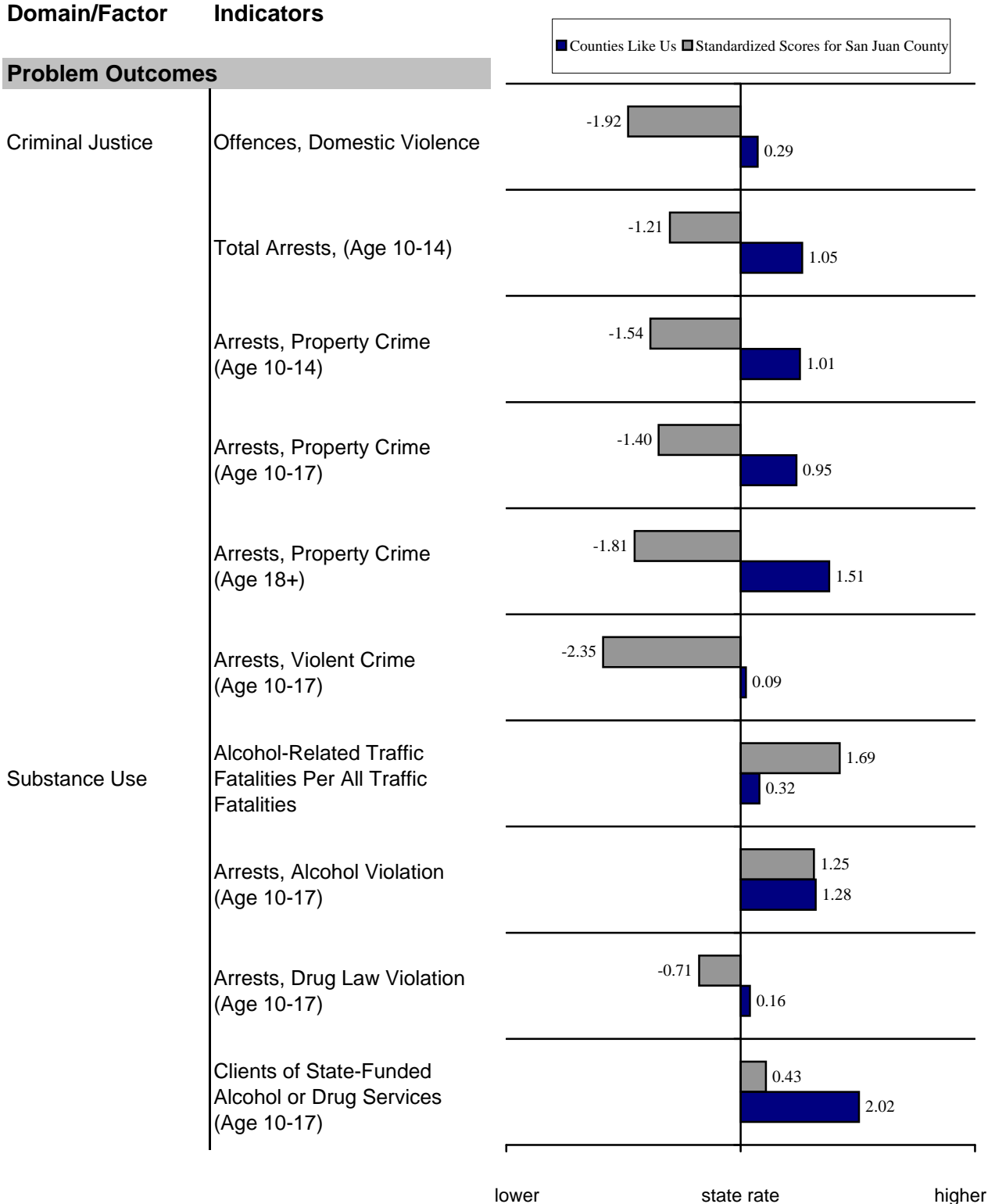
Standardized Five-Year Indicator Profile



If the 5 year rate was suppressed for data problems, there will be no bar or label. Rates equal to the state mean have a 0.0 label.



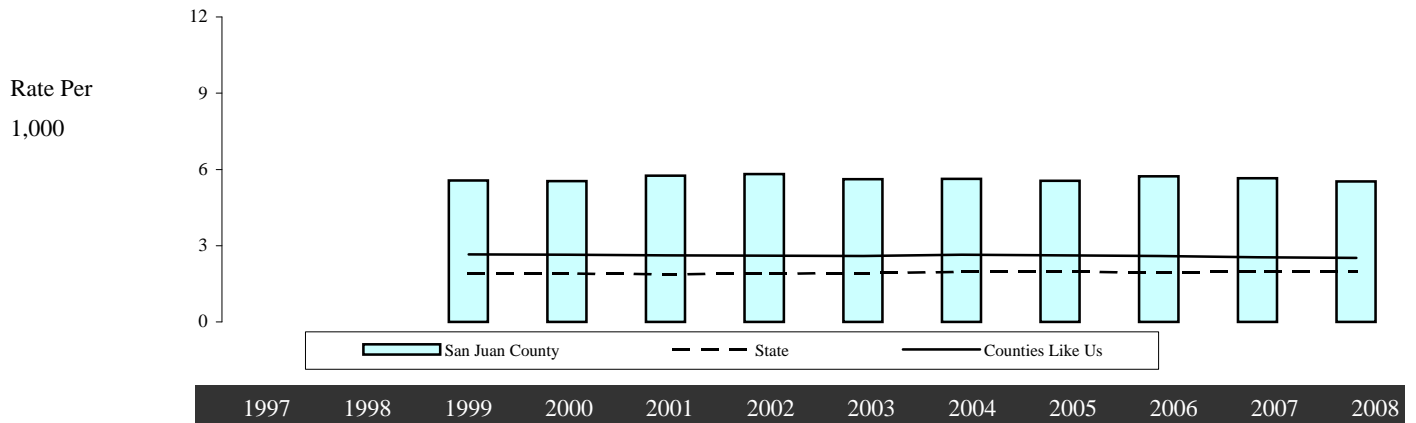
Standardized Five-Year Indicator Profile



If the 5 year rate was suppressed for data problems, there will be no bar or label. Rates equal to the state mean have a 0.0 label.

Community Domain: Availability of Drugs

**Alcohol Retail Licenses**



|                  | 1997 | 1998 | 1999   | 2000   | 2001   | 2002   | 2003   | 2004   | 2005   | 2006   | 2007   | 2008   |
|------------------|------|------|--------|--------|--------|--------|--------|--------|--------|--------|--------|--------|
| State            |      |      | 1.92   | 1.90   | 1.88   | 1.90   | 1.92   | 1.96   | 1.97   | 1.95   | 1.96   | 1.97   |
| Counties Like Us |      |      | 2.66   | 2.64   | 2.62   | 2.61   | 2.59   | 2.65   | 2.62   | 2.59   | 2.54   | 2.52   |
| San Juan County  |      |      | 5.56   | 5.54   | 5.76   | 5.82   | 5.61   | 5.63   | 5.55   | 5.73   | 5.66   | 5.53   |
| Licenses         |      |      | 78     | 78     | 83     | 85     | 83     | 85     | 86     | 90     | 90     | 89     |
| All Persons      |      |      | 14,019 | 14,077 | 14,400 | 14,602 | 14,800 | 15,100 | 15,500 | 15,700 | 15,900 | 16,101 |

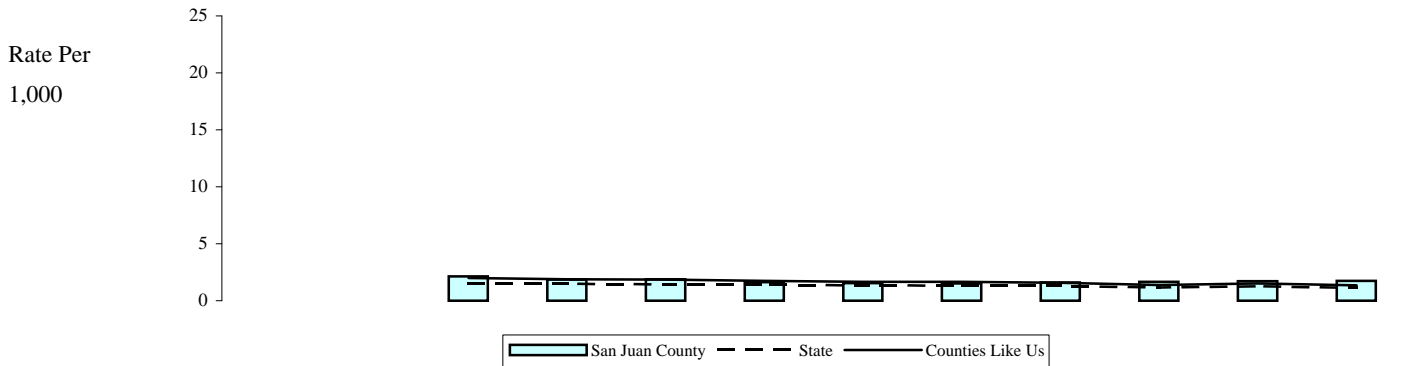
**Note:** The State and County rate are the annual number of alcohol retail licenses active during the year, per 1,000 persons (all ages). Retail licenses include restaurants, grocery stores, and wine shops but do not include state liquor stores and agencies. Retail alcohol facilities on military bases and reservations are not licensed by the State and therefore are not included in these data. Policies on licensing distributors, taxing the proceeds, and determining who can sell alcohol vary substantially from state to state. Consequently, there is no consistent comparable source for national data. Data from 1999 to present is now geocoded from the facility address, rather than apportioned from zip code. This results in a more accurate, but different data total per county.

**State Source:** Washington State Liquor Control Board, Annual Operations Report  
 Population Estimates: Washington State Department of Health

Updated  
 6/21/2009

Community Domain: Availability of Drugs

**Tobacco Retail and Vending Machine Licenses**



|                  | 1997 | 1998 | 1999   | 2000   | 2001   | 2002   | 2003   | 2004   | 2005   | 2006   | 2007   | 2008   |
|------------------|------|------|--------|--------|--------|--------|--------|--------|--------|--------|--------|--------|
| State            |      |      | 1.53   | 1.48   | 1.44   | 1.40   | 1.36   | 1.32   | 1.28   | 1.14   | 1.27   | 1.11   |
| Counties Like Us |      |      | 2.00   | 1.87   | 1.84   | 1.75   | 1.66   | 1.65   | 1.57   | 1.39   | 1.53   | 1.36   |
| San Juan County  |      |      | 2.14   | 1.85   | 1.88   | 1.64   | 1.55   | 1.52   | 1.61   | 1.66   | 1.70   | 1.74   |
| Licenses         |      |      | 30     | 26     | 27     | 24     | 23     | 23     | 25     | 26     | 27     | 28     |
| All Persons      |      |      | 14,019 | 14,077 | 14,400 | 14,602 | 14,800 | 15,100 | 15,500 | 15,700 | 15,900 | 16,101 |

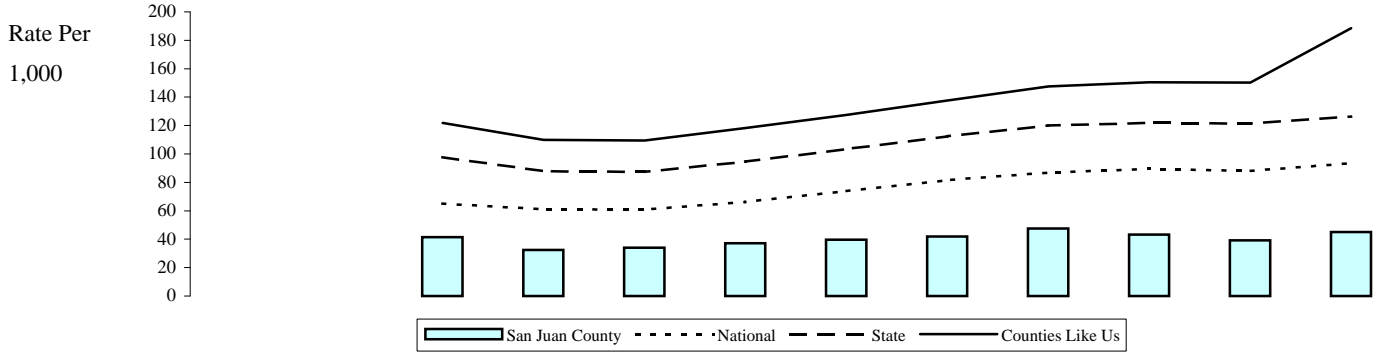
**Note:** The State and County rate are the annual number of tobacco retailer and vending machine licenses active during the year, per 1,000 persons (all ages). Tobacco retailers on military bases and reservations are not licensed by the State and therefore are not included in these data. Tobacco sales licenses include tobacco retailer licenses (stores that sell tobacco products) and tobacco vending machines. November counts are selected as representative of the average yearly number of retailers. No source of comparable national data was obtained.

**State Source:** Department of Health (from the Department of Licensing), Tobacco Prevention Program, Tobacco Statistics  
 Population Estimates: Washington State Department of Health

Updated  
 6/4/2009

Community Domain: Extreme Family Economic Deprivation

**Food Stamp Recipients (All Ages)**



|                  | 1997 | 1998 | 1999   | 2000   | 2001   | 2002   | 2003   | 2004   | 2005   | 2006   | 2007   | 2008   |
|------------------|------|------|--------|--------|--------|--------|--------|--------|--------|--------|--------|--------|
| National         |      |      | 65.03  | 60.93  | 60.74  | 66.31  | 73.82  | 81.48  | 87.03  | 89.44  | 87.96  | 93.57  |
| State            |      |      | 97.78  | 87.74  | 87.43  | 94.67  | 103.46 | 112.47 | 119.99 | 121.92 | 121.43 | 126.43 |
| Counties Like Us |      |      | 121.89 | 109.90 | 109.46 | 118.28 | 127.59 | 137.70 | 147.55 | 150.48 | 150.30 | 188.51 |
| San Juan County  |      |      | 41.44  | 32.39  | 34.10  | 37.19  | 39.59  | 41.79  | 47.61  | 43.25  | 39.18  | 44.97  |
| Recipients       |      |      | 581    | 456    | 491    | 543    | 586    | 631    | 738    | 679    | 623    | 724    |
| All Persons      |      |      | 14,019 | 14,077 | 14,400 | 14,602 | 14,800 | 15,100 | 15,500 | 15,700 | 15,900 | 16,101 |

**Note:** The rate is the number of persons (all ages) receiving food stamps in the fiscal year, per 1,000 persons (all ages). National rates use counts of all yearly recipients. Suppression code definitions for yearly rates are explained in Technical Notes.

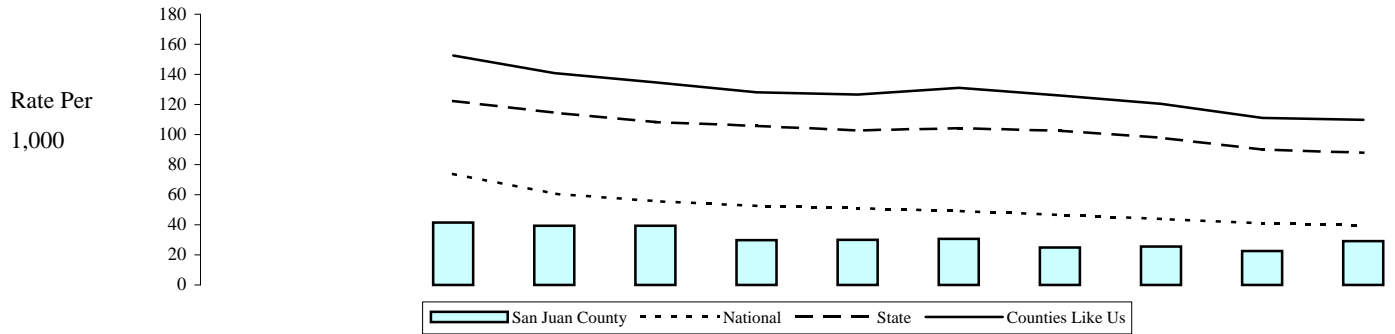
**Previously April numbers were used as the month with an average number of recipients. This has been replaced by fiscal year client counts.**

**State Source:** Department of Social and Health Services, Research and Data Analysis, Automated Client Eligibility System and Warrant Roll. Population Estimates: Washington State Department of Health

**National Source:** US Census Bureau, Statistical Abstract of the US; Federal Food Stamp Programs by State

Updated  
5/10/2009

### Temporary Assistance to Needy Families (TANF), Child Recipients



|                    | 1997 | 1998 | 1999   | 2000   | 2001   | 2002   | 2003   | 2004   | 2005   | 2006   | 2007   | 2008   |
|--------------------|------|------|--------|--------|--------|--------|--------|--------|--------|--------|--------|--------|
| National           |      |      | 73.93  | 60.61  | 55.85  | 52.64  | 51.08  | 49.19  | 46.59  | 43.80  | 41.13  | 39.65  |
| State              |      |      | 122.29 | 114.45 | 108.35 | 105.84 | 102.68 | 104.34 | 102.47 | 97.95  | 90.06  | 87.81  |
| Counties Like Us   |      |      | 152.51 | 140.80 | 134.68 | 128.17 | 126.65 | 130.98 | 125.98 | 120.44 | 111.13 | 109.73 |
| San Juan County    |      |      | 41.59  | 39.32  | 39.35  | 29.83  | 29.97  | 30.60  | 24.79  | 25.51  | 22.60  | 29.20  |
| TANF Children      |      |      | 114    | 106    | 107    | 81     | 81     | 83     | 68     | 70     | 62     | 80     |
| Children, birth-17 |      |      | 2,741  | 2,696  | 2,719  | 2,715  | 2,703  | 2,712  | 2,743  | 2,744  | 2,743  | 2,740  |

**Note:**The rate is the number of children (age birth-17) participating in Aid to Families (AFDC/TANF) programs in the fiscal year, per 1,000 children (age birth-17). Nationally, prior to 1997 AFDC Flash Report was used which counts children 0-17. However National TANF child recipients are defined as children 0-19 with almost no children of age 19, therefore national denominators after 1996 are for children 0-18. Suppression code definitions for yearly rates are explained in Technical Notes.

**Previously April numbers were used as the month with an average number of recipients. This has been replaced by fiscal year client counts.**

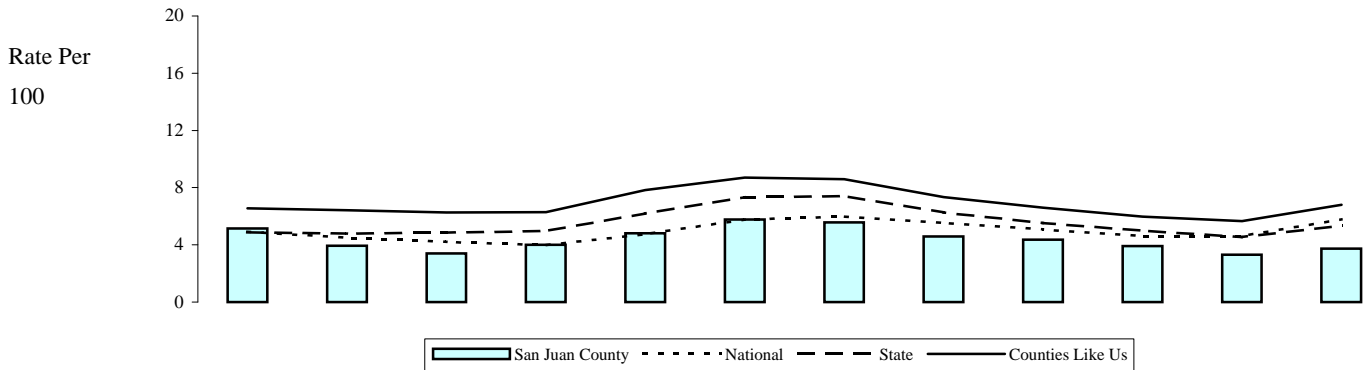
**State Source:** Department of Social and Health Services, Research and Data Analysis, Automated Client Eligibility System and Warrant Roll. Population Estimates: Washington State Department of Health

**National Source:** U.S. Department of Health & Human Services, Administration for Children and Families, Office of Planning Research and Evaluation: Characteristics and Financial Circumstances of TANF Recipients Table I-29

Updated  
5/8/2009

Community Domain: Extreme Family Economic Deprivation

**Unemployed Persons (Age 16+)**



|                  | 1997  | 1998  | 1999  | 2000  | 2001  | 2002  | 2003  | 2004  | 2005  | 2006  | 2007  | 2008  |
|------------------|-------|-------|-------|-------|-------|-------|-------|-------|-------|-------|-------|-------|
| National         | 4.93  | 4.49  | 4.20  | 3.99  | 4.75  | 5.78  | 5.98  | 5.52  | 5.07  | 4.61  | 4.61  | 5.80  |
| State            | 4.87  | 4.78  | 4.85  | 4.96  | 6.19  | 7.34  | 7.41  | 6.26  | 5.53  | 4.99  | 4.54  | 5.34  |
| Counties Like Us | 6.55  | 6.43  | 6.26  | 6.28  | 7.84  | 8.71  | 8.58  | 7.34  | 6.61  | 5.98  | 5.67  | 6.81  |
| San Juan County  | 5.15  | 3.93  | 3.40  | 4.00  | 4.81  | 5.77  | 5.56  | 4.58  | 4.36  | 3.91  | 3.30  | 3.73  |
| Unemployed, 16+  | 300   | 240   | 230   | 300   | 360   | 440   | 440   | 380   | 360   | 320   | 280   | 330   |
| Labor Force, 16+ | 5,820 | 6,100 | 6,770 | 7,500 | 7,490 | 7,630 | 7,910 | 8,290 | 8,260 | 8,180 | 8,490 | 8,840 |

**Note:** The rate is unemployed persons (age 16 and over) per 100 persons in the civilian labor force. Unemployed persons are individuals who are currently available for work have actively looked for work, and do not have a job. The civilian labor force includes persons who are working or looking for work. The monthly numbers are a snapshot in time done approximately the 12th of each month. A yearly estimate is then produced by averaging the monthly numbers. Historical data has been updated. 2002 data should be considered preliminary. Suppression code definitions for yearly rates are explained in Technical Notes.

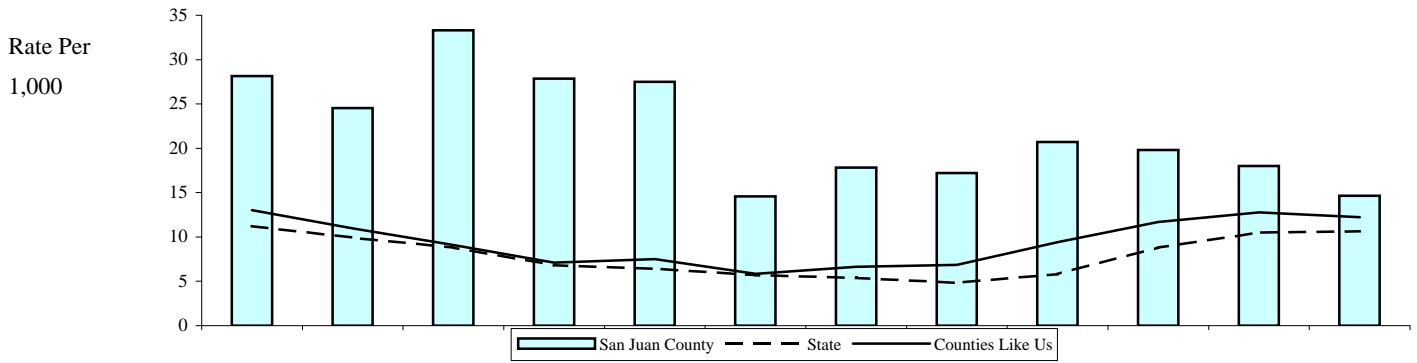
**State Source:** Employment Security Department, Labor Market and Economic Analysis, County Unemployment File

**National Source:** U.S. Department of Labor Bureau of Labor Statistics Labor Force Statistics from the Current Population Survey

Updated  
4/22/2009

Community Domain: Transitions and Mobility

Net Migration, 3 Year Moving Average



|  | 1997 | 1998 | 1999 | 2000 | 2001 | 2002 | 2003 | 2004 | 2005 | 2006 | 2007 | 2008 |
|--|------|------|------|------|------|------|------|------|------|------|------|------|
|--|------|------|------|------|------|------|------|------|------|------|------|------|

|                  |        |        |        |        |        |        |        |        |        |        |        |        |
|------------------|--------|--------|--------|--------|--------|--------|--------|--------|--------|--------|--------|--------|
| State            | 11.22  | 9.94   | 8.79   | 6.81   | 6.43   | 5.71   | 5.39   | 4.82   | 5.82   | 8.80   | 10.49  | 10.66  |
| Counties Like Us | 13.04  | 10.96  | 9.09   | 7.10   | 7.51   | 5.85   | 6.65   | 6.85   | 9.41   | 11.70  | 12.79  | 12.24  |
| San Juan County  | 28.13  | 24.55  | 33.31  | 27.85  | 27.50  | 14.59  | 17.84  | 17.22  | 20.71  | 19.81  | 17.99  | 14.66  |
| Resident Change  | 363    | 325    | 467    | 392    | 396    | 213    | 264    | 260    | 321    | 311    | 286    | 236    |
| All Persons      | 12,906 | 13,239 | 14,019 | 14,077 | 14,400 | 14,602 | 14,800 | 15,100 | 15,500 | 15,700 | 15,900 | 16,101 |

**Note:** Net migration is the annual number of new residents that moved into an area minus the number of residents that moved out of an area adding births and subtracting deaths. A 3-year moving average smooths net migration. Annual net migration estimates are summed for 3-year ranges then averaged to calculate the numerator. The **last year** of the 3 years used in the average is used for the population denominator and the year label for the average net migration value. Data is calculated from fiscal year data, for fiscal year 1998-1999 the year designation is 1999 as an average of data from fiscal years 1996-1997 to 1998-1999. Since increases and decreases in population both cause disruption to the community, the absolute value of the change is charted.

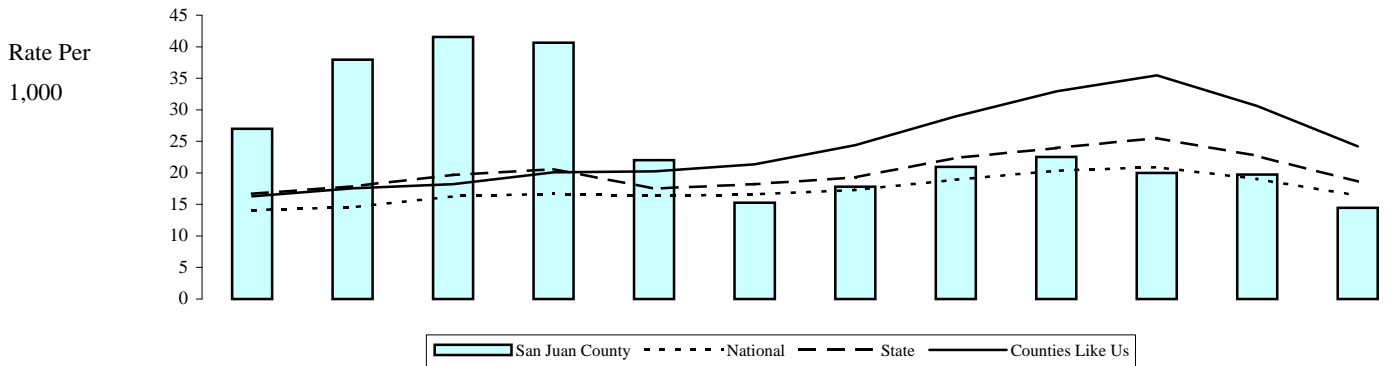
**State Source:** Office of Financial Management, Net Migration Data

Updated

12/18/2008

## Community Domain: Transitions and Mobility

### Existing Home Sales



|                  | 1996   | 1997   | 1998   | 1999   | 2000   | 2001   | 2002   | 2003   | 2004   | 2005   | 2006   | 2007   |
|------------------|--------|--------|--------|--------|--------|--------|--------|--------|--------|--------|--------|--------|
| National         | 14.09  | 14.54  | 16.29  | 16.67  | 16.32  | 16.60  | 17.28  | 18.90  | 20.35  | 20.91  | 19.04  | 16.41  |
| State            | 16.70  | 17.86  | 19.67  | 20.61  | 17.50  | 18.21  | 19.29  | 22.36  | 23.97  | 25.51  | 22.68  | 18.61  |
| Counties Like Us | 16.30  | 17.55  | 18.20  | 20.08  | 20.22  | 21.34  | 24.39  | 28.97  | 32.95  | 35.47  | 30.60  | 24.22  |
| San Juan County  | 27.00  | 37.97  | 41.54  | 40.66  | 22.02  | 15.28  | 17.81  | 20.95  | 22.52  | 20.00  | 19.75  | 14.47  |
| Sales            | 340    | 490    | 550    | 570    | 310    | 220    | 260    | 310    | 340    | 310    | 310    | 230    |
| All Persons      | 12,592 | 12,906 | 13,239 | 14,019 | 14,077 | 14,400 | 14,602 | 14,800 | 15,100 | 15,500 | 15,700 | 15,900 |

**Note:** The rates are the annual number of previously-owned homes sold, per 1,000 persons (all ages). Previously-owned homes sold is rounded to the tens. Existing homes sold are estimated based on data from multiple listing services, firms that monitor deeds, and local Realtors associations. Adjustments were made by the data provider to remove refinanced, rather than sold homes from the counts of sales.

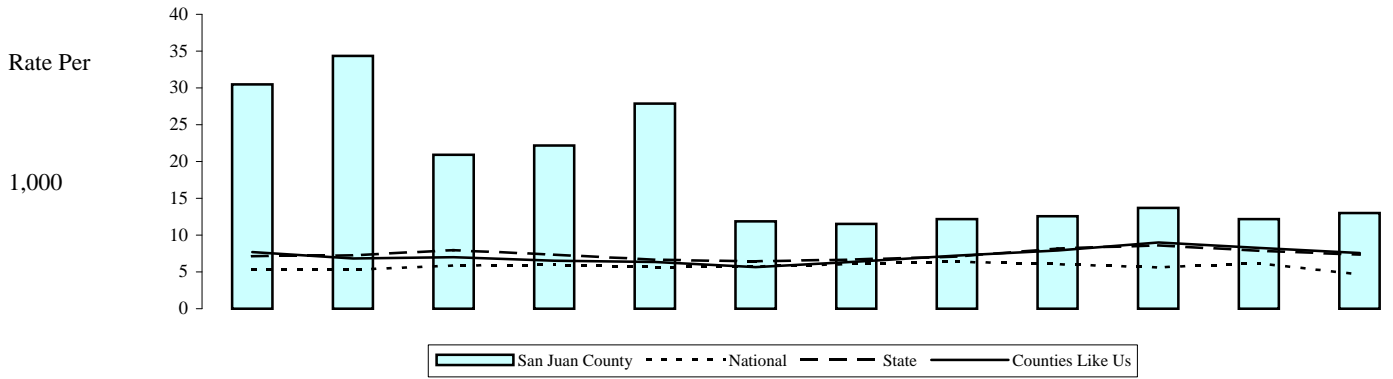
**State Source:** Washington Center for Real Estate Research, Washington State University, Washington State's Housing Market: A Supply/Demand Assessment. Population Estimates: Washington State Department of Health

**National Source:** US Census Bureau, Statistical Abstract of the US; Existing One-family houses sold

Updated  
10/28/2008

Community Domain: Transitions and Mobility

**New Residence Construction**



|                  | 1996   | 1997   | 1998   | 1999   | 2000   | 2001   | 2002   | 2003   | 2004   | 2005   | 2006   | 2007   |
|------------------|--------|--------|--------|--------|--------|--------|--------|--------|--------|--------|--------|--------|
| National         | 5.29   | 5.29   | 5.85   | 5.96   | 5.64   | 5.74   | 6.07   | 6.39   | 6.06   | 5.61   | 6.17   | 4.65   |
| State            | 7.12   | 7.25   | 7.95   | 7.34   | 6.65   | 6.42   | 6.69   | 7.07   | 8.18   | 8.59   | 7.89   | 7.33   |
| Counties Like Us | 7.71   | 6.84   | 6.99   | 6.51   | 6.34   | 5.64   | 6.38   | 7.23   | 7.90   | 9.00   | 8.25   | 7.57   |
| San Juan County  | 30.50  | 34.33  | 20.92  | 22.18  | 27.85  | 11.88  | 11.51  | 12.16  | 12.58  | 13.68  | 12.17  | 13.02  |
| New Residences   | 384    | 443    | 277    | 311    | 392    | 171    | 168    | 180    | 190    | 212    | 191    | 207    |
| All Persons      | 12,592 | 12,906 | 13,239 | 14,019 | 14,077 | 14,400 | 14,602 | 14,800 | 15,100 | 15,500 | 15,700 | 15,900 |

**Note:** The rates are the annual number of new building permits issued for single and multi-family dwellings, per 1,000 persons (all ages). Each unit in a multi-family dwelling (for example, each apartment in a building) has a separate building permit.

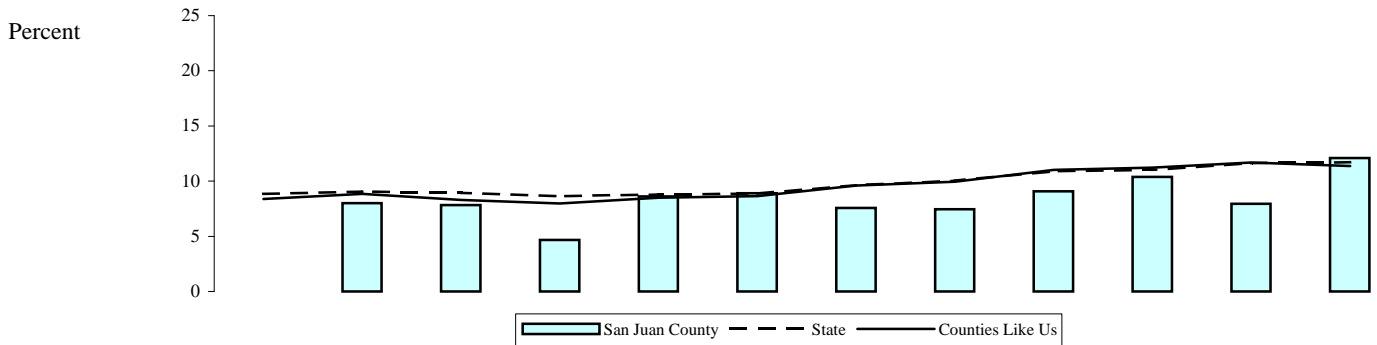
**State Source:** Washington Center for Real Estate Research, Washington State University, Washington State's Housing Market: A Supply/Demand Assessment. Population Estimates: Washington State Department of Health

**National Source:** US Census Bureau, Statistical Abstract of the US; New Privately Owned Housing Units Started

Updated  
10/28/2008

Community Domain: Alcohol or Drug-related Problems

**Alcohol- or Drug-Related Deaths**



|                  | 1996 | 1997 | 1998 | 1999 | 2000 | 2001 | 2002 | 2003  | 2004  | 2005  | 2006  | 2007  |
|------------------|------|------|------|------|------|------|------|-------|-------|-------|-------|-------|
| State            | 8.85 | 9.04 | 8.92 | 8.65 | 8.80 | 8.87 | 9.62 | 10.03 | 10.91 | 11.01 | 11.62 | 11.71 |
| Counties Like Us | 8.37 | 8.84 | 8.29 | 7.98 | 8.49 | 8.63 | 9.59 | 9.94  | 11.02 | 11.22 | 11.69 | 11.37 |
| San Juan County  | SP   | 8.00 | 7.84 | 4.67 | 8.62 | 8.89 | 7.56 | 7.44  | 9.09  | 10.38 | 7.94  | 12.10 |
| AOD-related      | 10   | 8    | 8    | 5    | 10   | 12   | 9    | 9     | 10    | 11    | 10    | 15    |
| Deaths           | 99   | 100  | 102  | 107  | 116  | 135  | 119  | 121   | 110   | 106   | 126   | 124   |

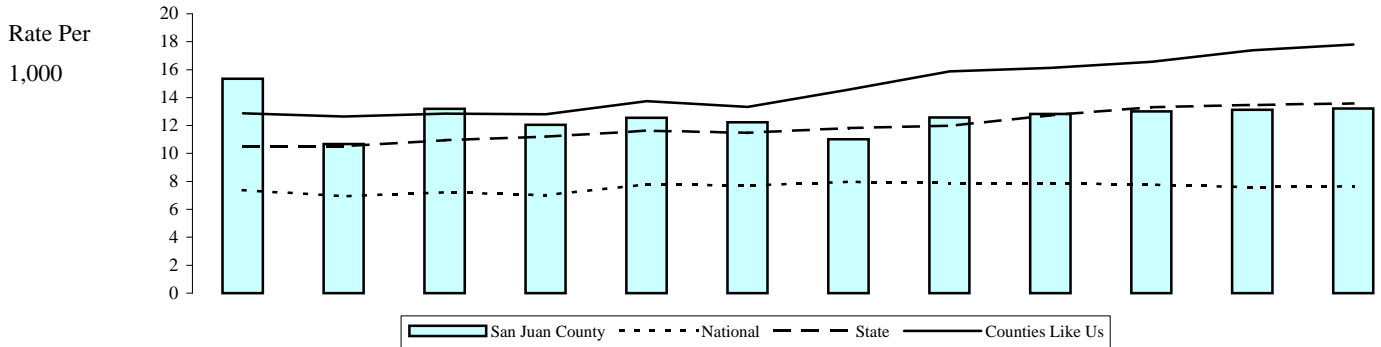
**Note:** The rates are the annual number of deaths, with alcohol- or drug-related causes, per 100 deaths. Evaluation is based on all contributory causes of death for direct and indirect associations with alcohol and drug abuse. For a complete explanation of the codes and methods used please see Technical Notes: Counting Alcohol- or Drug-related Deaths. Suppression code definitions for yearly rates are explained in Technical Notes. Rates are not reported when fewer than 100 deaths occurred in an area.

**State Source:** Department of Health, Center for Health Statistics, Death Certificate Data File

Updated  
11/21/2008

Community Domain: Alcohol or Drug-related Problems

**Clients of State-Funded Alcohol or Drug Services (Age 18+)**



|                  | 1996   | 1997   | 1998   | 1999   | 2000   | 2001   | 2002   | 2003   | 2004   | 2005   | 2006   | 2007   |
|------------------|--------|--------|--------|--------|--------|--------|--------|--------|--------|--------|--------|--------|
| National         | 7.37   | 6.95   | 7.21   | 7.02   | 7.79   | 7.70   | 7.98   | 7.89   | 7.87   | 7.76   | 7.59   | 7.65   |
| State            | 10.49  | 10.52  | 10.96  | 11.20  | 11.64  | 11.47  | 11.82  | 11.98  | 12.73  | 13.32  | 13.47  | 13.58  |
| Counties Like Us | 12.88  | 12.64  | 12.86  | 12.81  | 13.74  | 13.33  | 14.56  | 15.88  | 16.13  | 16.57  | 17.39  | 17.80  |
| San Juan County  | 15.35  | 10.68  | 13.20  | 12.06  | 12.56  | 12.24  | 11.02  | 12.57  | 12.84  | 13.01  | 13.12  | 13.22  |
| Admits, 18+      | 154    | 110    | 140    | 136    | 143    | 143    | 131    | 152    | 159    | 166    | 170    | 174    |
| Persons, 18+     | 10,030 | 10,303 | 10,609 | 11,278 | 11,381 | 11,681 | 11,887 | 12,097 | 12,388 | 12,757 | 12,956 | 13,157 |

**Note:** The rates are the annual number of adults (age 18 and over) receiving state-funded alcohol or drug services, per 1,000 adults. Counts of adults are unduplicated so that those receiving services more than once during the year are only counted once for that year. State-funded services include treatment, assessment, and detox. Persons in Department of Corrections treatment programs are not included.

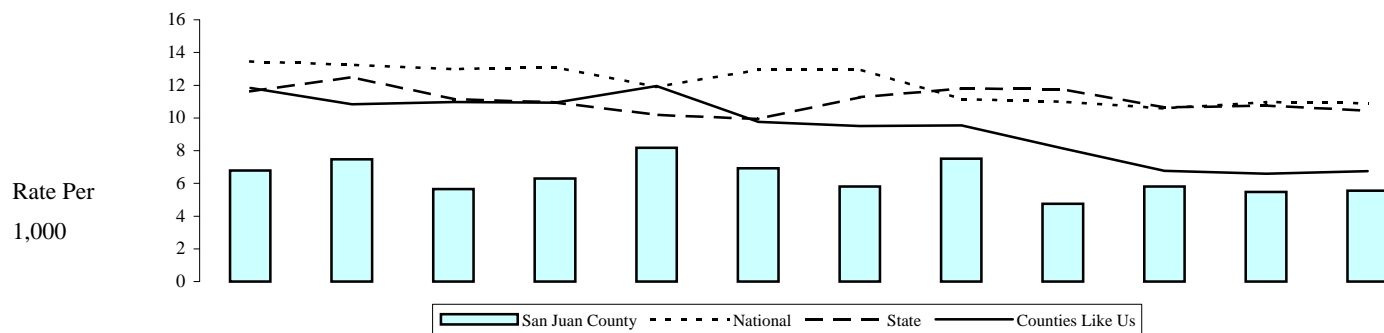
**State Source:** Department of Social and Health Services, Division of Alcohol and Substance Abuse, Treatment and Assessment Report Generation Tool (TARGET). Population Estimates: Washington State Department of Health

**National Source:** Office of Applied Studies, Substance Abuse and Mental Health Services Administration, Treatment Episode Data Set (TEDS)

Updated  
9/23/2008

## Community Domain: Alcohol or Drug-related Problems

### Arrests (Age 18+), Alcohol-Related



|                  | 1996   | 1997   | 1998   | 1999   | 2000   | 2001   | 2002   | 2003   | 2004   | 2005   | 2006   | 2007   |
|------------------|--------|--------|--------|--------|--------|--------|--------|--------|--------|--------|--------|--------|
| National         | 13.46  | 13.25  | 12.99  | 13.11  | 11.90  | 12.95  | 12.96  | 11.15  | 11.00  | 10.59  | 10.97  | 10.90  |
| State            | 11.62  | 12.50  | 11.14  | 10.95  | 10.20  | 9.93   | 11.27  | 11.80  | 11.75  | 10.64  | 10.75  | 10.44  |
| Counties Like Us | 11.83  | 10.83  | 10.98  | 10.93  | 11.95  | 9.77   | 9.51   | 9.54   | 8.13   | 6.77   | 6.59   | 6.74   |
| San Juan County  | 6.78   | 7.47   | 5.66   | 6.30   | 8.17   | 6.93   | 5.80   | 7.52   | 4.76   | 5.80   | 5.48   | 5.55   |
| Arrests, 18+     | 68     | 77     | 60     | 71     | 93     | 81     | 69     | 91     | 59     | 74     | 71     | 73     |
| Adjst'd Pop 18+  | 10,030 | 10,303 | 10,609 | 11,278 | 11,381 | 11,681 | 11,887 | 12,097 | 12,388 | 12,757 | 12,956 | 13,157 |

**Note:** The rates are the alcohol violations (age 18+), per 1,000 adults (age 18+). Alcohol violations include all crimes involving driving under the influence, liquor law violations, and drunkenness. DUI arrests by the Washington State Patrol (29% of all Adult Alcohol-related Arrests) are included in the state trend analysis. However, they are not included in the county rankings since WSP arrests are not assigned to counties. Data may differ from our last report because of refinements to our population adjustment process. Denominators are adjusted by subtracting the population of police agencies that did not report arrests to UCR. In spite of this population adjustment, when the non-reporting police jurisdiction is where much of the crime occurs, the rate for the county will be lower than it would be if that jurisdiction was included. For percent subtracted, suppression code definitions and the agencies not reporting, see the Technical Notes and the appendix on Non-Reporting Agencies and Population.

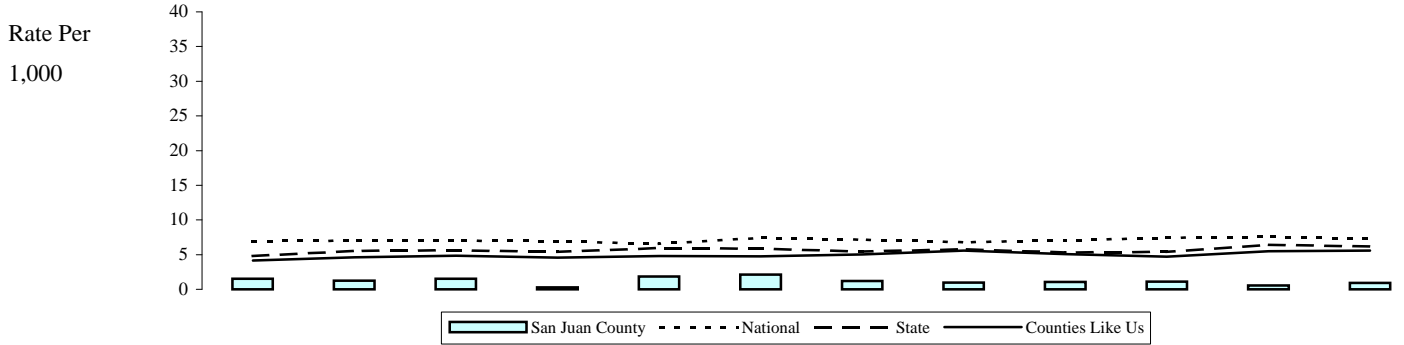
**State Source:** Washington Association of Sheriffs and Police Chiefs, Uniform Crime Report (UCR), Tables 40 and 50. Population Estimates: Washington State Department of Health

**National Source:** US Department of Justice, Bureau of Justice Statistics Sourcebook of Criminal Justice Statistics Online

Updated  
10/21/2008

Community Domain: Alcohol or Drug-related Problems

**Arrests (Age 18+), Drug Law Violation**



|                  | 1996   | 1997   | 1998   | 1999   | 2000   | 2001   | 2002   | 2003   | 2004   | 2005   | 2006   | 2007   |
|------------------|--------|--------|--------|--------|--------|--------|--------|--------|--------|--------|--------|--------|
| National         | 6.93   | 7.02   | 7.01   | 6.92   | 6.56   | 7.43   | 7.13   | 6.77   | 7.06   | 7.44   | 7.58   | 7.29   |
| State            | 4.78   | 5.53   | 5.62   | 5.41   | 5.93   | 5.86   | 5.45   | 5.78   | 5.31   | 5.38   | 6.40   | 6.20   |
| Counties Like Us | 4.17   | 4.63   | 4.85   | 4.56   | 4.80   | 4.73   | 5.01   | 5.60   | 5.09   | 4.71   | 5.47   | 5.56   |
| San Juan County  | 1.50   | 1.26   | 1.51   | 0.27   | 1.85   | 2.14   | 1.18   | 0.99   | 1.05   | 1.10   | 0.54   | 0.91   |
| Arrests, 18+     | 15     | 13     | 16     | 3      | 21     | 25     | 14     | 12     | 13     | 14     | 7      | 12     |
| Adjst'd Pop 18+  | 10,030 | 10,303 | 10,609 | 11,278 | 11,381 | 11,681 | 11,887 | 12,097 | 12,388 | 12,757 | 12,956 | 13,157 |

**Note:** The rates are the annual number of arrests of adults (age 18+) for drug law violations, per 1,000 adults (age 18+). Drug law violations include all crimes involving sale, manufacturing, and possession of drugs. Data may differ from our last report because of refinements to our population adjustment process. Denominators are adjusted by subtracting the population of police agencies that did not report arrests to UCR. In spite of this population adjustment, when the non-reporting police jurisdiction is where much of the crime occurs, the rate for the county will be lower than it would be if that jurisdiction was included. For percent subtracted, suppression code definitions and the agencies not reporting, see the Technical Notes and the appendix on Non-Reporting Agencies and Population.

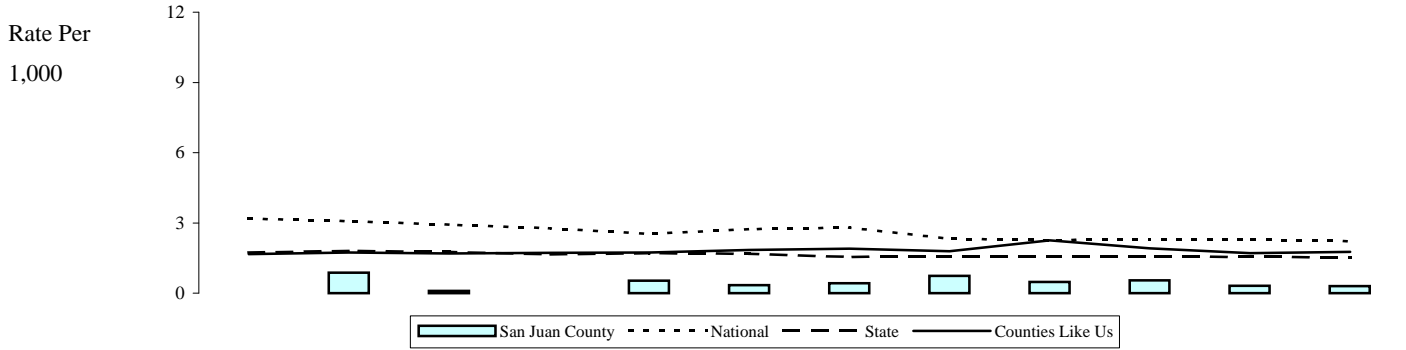
**State Source:** Washington Association of Sheriffs and Police Chiefs, Uniform Crime Report (UCR), Tables 40 and 50. Population Estimates: Washington State Department of Health

**National Source:** US Department of Justice, Bureau of Justice Statistics Sourcebook of Criminal Justice Statistics Online

Updated  
10/21/2008

Community Domain: Adult Violent Crime

Arrests (Age 18+), Violent Crime



|                  | 1996   | 1997   | 1998   | 1999   | 2000   | 2001   | 2002   | 2003   | 2004   | 2005   | 2006   | 2007   |
|------------------|--------|--------|--------|--------|--------|--------|--------|--------|--------|--------|--------|--------|
| National         | 3.18   | 3.07   | 2.92   | 2.77   | 2.53   | 2.73   | 2.80   | 2.32   | 2.27   | 2.30   | 2.29   | 2.22   |
| State            | 1.74   | 1.81   | 1.76   | 1.65   | 1.71   | 1.68   | 1.54   | 1.58   | 1.59   | 1.57   | 1.54   | 1.53   |
| Counties Like Us | 1.67   | 1.73   | 1.70   | 1.72   | 1.74   | 1.84   | 1.90   | 1.79   | 2.25   | 1.92   | 1.71   | 1.76   |
| San Juan County  | 0.00   | 0.87   | 0.09   | 0.00   | 0.53   | 0.34   | 0.42   | 0.74   | 0.48   | 0.55   | 0.31   | 0.30   |
| Arrests, 18+     | 0      | 9      | 1      | 0      | 6      | 4      | 5      | 9      | 6      | 7      | 4      | 4      |
| Adjst'd Pop 18+  | 10,030 | 10,303 | 10,609 | 11,278 | 11,381 | 11,681 | 11,887 | 12,097 | 12,388 | 12,757 | 12,956 | 13,157 |

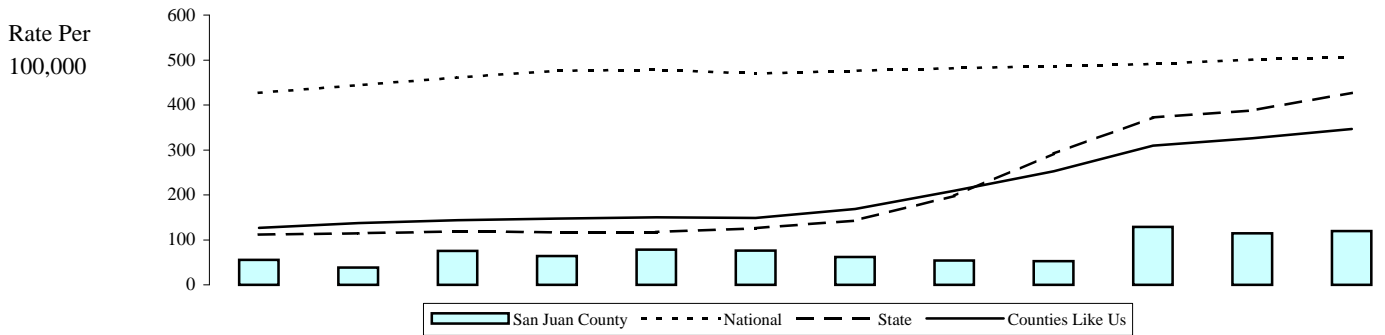
**Note:** The rates are the annual number of arrests of adults (age 18+) for violent crime per 1,000 adults (age 18+). Violent crimes include all crimes involving criminal homicide, forcible rape, robbery, and aggravated assault. Simple assault is not defined as a violent crime. Data may differ from our last report because of refinements to our population adjustment process. Denominators are adjusted by subtracting the population of police agencies that did not report arrests to UCR. In spite of this population adjustment, when the non-reporting police jurisdiction is where much of the crime occurs, the rate for the county will be lower than it would be if that jurisdiction was included. For percent subtracted, suppression code definitions and the agencies not reporting, see the Technical Notes and the appendix on Non-Reporting Agencies and Population.

**State Source:** Washington Association of Sheriffs and Police Chiefs, Uniform Crime Report (UCR), Tables 40 and 50. Population Estimates: Washington State Department of Health

**National Source:** US Department of Justice, Bureau of Justice Statistics Sourcebook of Criminal Justice Statistics Online

Updated  
10/21/2008

**Prisoners in State Correctional Systems (Age 18+)**



|                  | 1996   | 1997   | 1998   | 1999   | 2000   | 2001   | 2002   | 2003   | 2004   | 2005   | 2006   | 2007   |
|------------------|--------|--------|--------|--------|--------|--------|--------|--------|--------|--------|--------|--------|
| National         | 427.00 | 444.00 | 461.00 | 476.00 | 478.00 | 470.00 | 476.00 | 482.00 | 486.00 | 491.00 | 501.00 | 506.00 |
| State            | 111.39 | 114.91 | 118.61 | 116.78 | 117.73 | 125.89 | 143.14 | 198.09 | 291.89 | 372.42 | 387.96 | 427.28 |
| Counties Like Us | 126.34 | 137.46 | 143.67 | 147.43 | 150.33 | 148.78 | 168.42 | 209.05 | 252.99 | 309.55 | 325.99 | 346.57 |
| San Juan County  | 55.59  | 38.74  | 75.53  | 64.20  | 78.14  | 76.39  | 61.64  | 54.05  | 52.98  | 129.03 | 114.65 | 119.50 |
| Prisoners, 18+   | 7      | 5      | 10     | 9      | 11     | 11     | 9      | 8      | 8      | 20     | 18     | 19     |
| All Persons      | 12,592 | 12,906 | 13,239 | 14,019 | 14,077 | 14,400 | 14,602 | 14,800 | 15,100 | 15,500 | 15,700 | 15,900 |

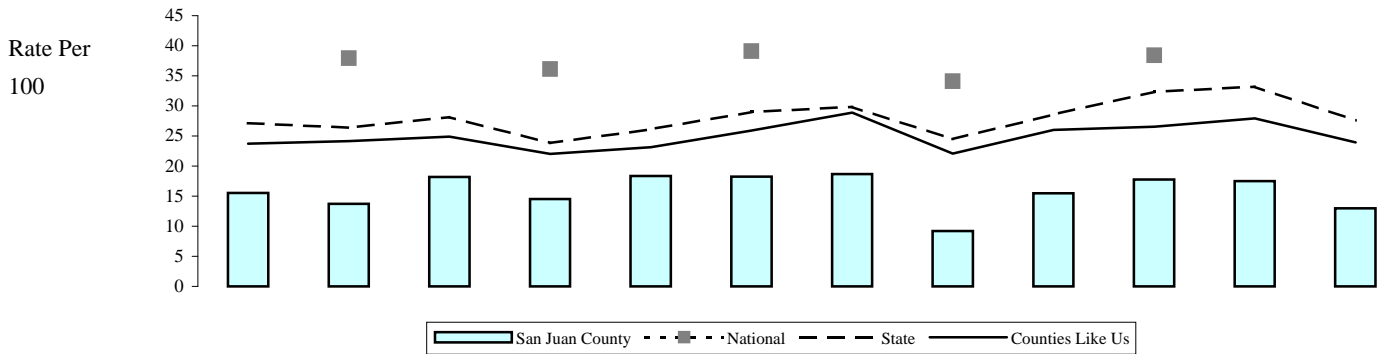
**Note:** The rate is the annual number of adult (age 18 and over) admissions to prison, per 100,000 persons (all ages). Admissions include new admissions, re-admissions, community custody inmate violations, and parole violations. Counts of admissions are duplicated so that individuals admitted to prison more than once in a year are counted each time they are admitted. The admissions are attributed to the county where the conviction occurred. In 2003 prisoners being electronically monitored are included in the data. This causes a jump in numbers for counties which use this incarceration option. National data after 1998 are not available in an equivalent form. Suppression code definitions for yearly rates are explained in Technical Notes.

**State Source:** Department of Corrections, Inmates File. Population Estimates: Washington State Department of Health

**National Source:** Bureau of Justice Statistics Correctional Populations in the U.S.

Updated  
6/10/2008

**Population Not Registered to Vote**



|                  | 1997   | 1998   | 1999   | 2000   | 2001   | 2002   | 2003   | 2004   | 2005   | 2006   | 2007   | 2008   |
|------------------|--------|--------|--------|--------|--------|--------|--------|--------|--------|--------|--------|--------|
| National         |        | 37.90  |        | 36.10  |        | 39.10  |        | 34.10  |        | 38.40  |        |        |
| State            | 27.12  | 26.38  | 28.12  | 23.85  | 26.11  | 28.97  | 29.84  | 24.49  | 28.58  | 32.36  | 33.20  | 27.54  |
| Counties Like Us | 23.75  | 24.13  | 24.88  | 22.02  | 23.13  | 25.88  | 28.86  | 22.06  | 26.01  | 26.52  | 27.93  | 23.93  |
| San Juan County  | 15.54  | 13.73  | 18.18  | 14.51  | 18.37  | 18.22  | 18.67  | 9.22   | 15.46  | 17.75  | 17.52  | 13.00  |
| Not Registered   | 1,601  | 1,457  | 2,050  | 1,651  | 2,146  | 2,166  | 2,258  | 1,142  | 1,972  | 2,300  | 2,305  | 1,737  |
| Persons, 18+     | 10,303 | 10,609 | 11,278 | 11,381 | 11,681 | 11,887 | 12,097 | 12,388 | 12,757 | 12,956 | 13,157 | 13,361 |

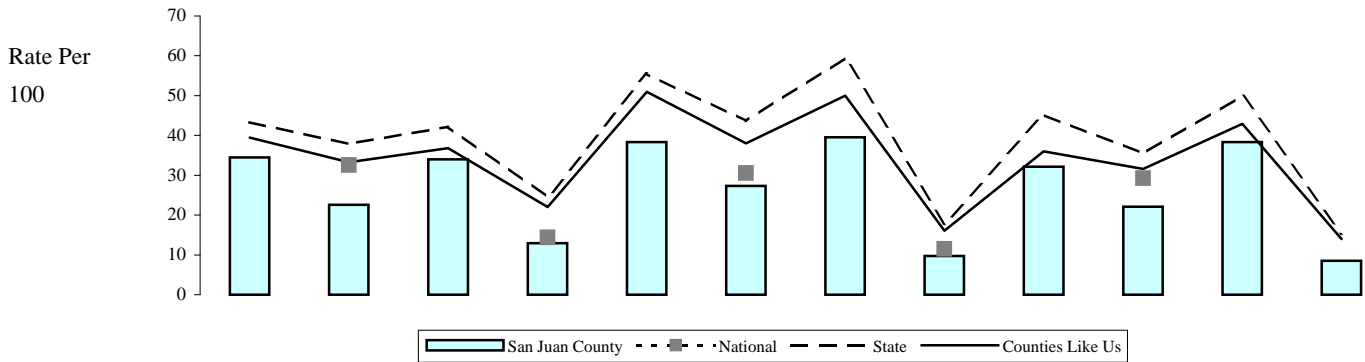
**Note:** The rate is the annual number of persons not registered to vote in the November elections, per 100 adults (age 18 and over). As part of the November Current Population Survey (the Voting and Registration Supplement), the Bureau of the Census collects data on voting and registration in years with presidential or congressional elections (i.e. every other year).

**State Source:** Office of the Secretary of State, Elections Division, Registered Voters. Population Estimates: Washington State Department of Health

**National Source:** Calculated using data from U.S. Census Bureau, Statistical Abstract of the United States; "Voting-Age Population, Percent Reporting Registered, and Voted: 1980 to 2000"

Updated  
2/1/2009

### Registered And Not Voting in the November Election



|                  | 1997  | 1998  | 1999  | 2000  | 2001  | 2002  | 2003  | 2004   | 2005   | 2006   | 2007   | 2008   |
|------------------|-------|-------|-------|-------|-------|-------|-------|--------|--------|--------|--------|--------|
| National         |       | 32.53 |       | 14.40 |       | 30.54 |       | 11.53  |        | 29.22  |        |        |
| State            | 43.35 | 37.83 | 42.23 | 24.54 | 55.49 | 43.65 | 59.51 | 17.81  | 45.18  | 35.45  | 49.96  | 15.39  |
| Counties Like Us | 39.43 | 33.29 | 36.84 | 22.00 | 50.97 | 38.02 | 49.95 | 16.07  | 36.04  | 31.61  | 42.93  | 14.00  |
| San Juan County  | 34.51 | 22.57 | 33.96 | 12.90 | 38.36 | 27.33 | 39.51 | 9.75   | 32.11  | 22.07  | 38.35  | 8.51   |
| Not Voting       | 3,003 | 2,066 | 3,134 | 1,255 | 3,658 | 2,657 | 3,887 | 1,097  | 3,463  | 2,352  | 4,162  | 989    |
| Reg'd Voters     | 8,702 | 9,152 | 9,228 | 9,730 | 9,535 | 9,721 | 9,839 | 11,246 | 10,785 | 10,656 | 10,852 | 11,624 |

**Note:** The rate is the annual number of persons registered to vote in the November elections but not voting, per 100 adults (age 18 and over) registered to vote. As part of the November Current Population Survey (the Voting and Registration Supplement), the Bureau of the Census collects data on voting and registration in years with presidential or congressional elections (i.e. every other year).

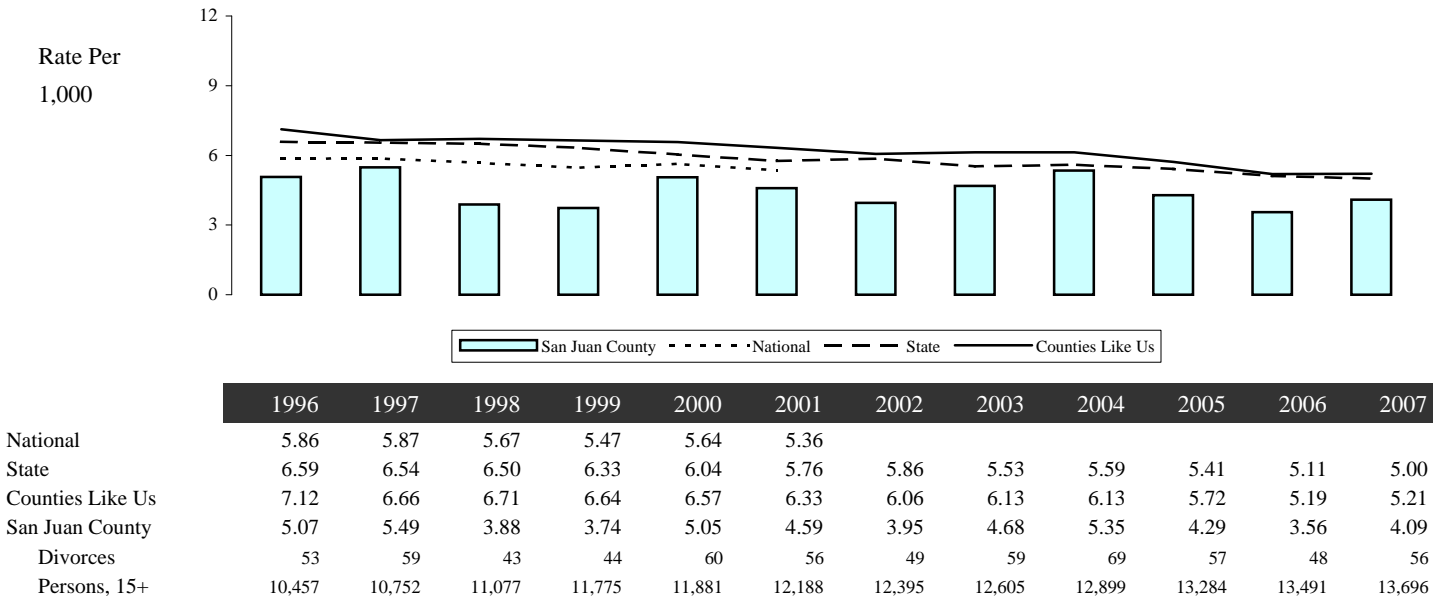
**State Source:** Office of the Secretary of State, Elections Division, Registered Voters. Population Estimates: Washington State Department of Health

**National Source:** Calculated using data from U.S. Census Bureau, Statistical Abstract of the United States; "Voting-Age Population, Percent Reporting Registered, and Voted: 1980 to 2000"

Updated  
2/1/2009

## Family Domain: Family Problems

### Divorce



**Note:** The State and County rates are the annual number of divorces per 1,000 persons (age 15 and over). Divorce includes dissolutions, annulments, and unknown decree types; it does not include legal separations. Divorce data is reported by the woman's residence, if in Washington at the time of decree. If the woman lived outside Washington, the man's residence was used. If both parties residence was unknown the event is not assigned to a county, but is included in the state rate. The National rate is based on age 18 and over population. Suppression code definitions for yearly rates are explained in Technical Notes.

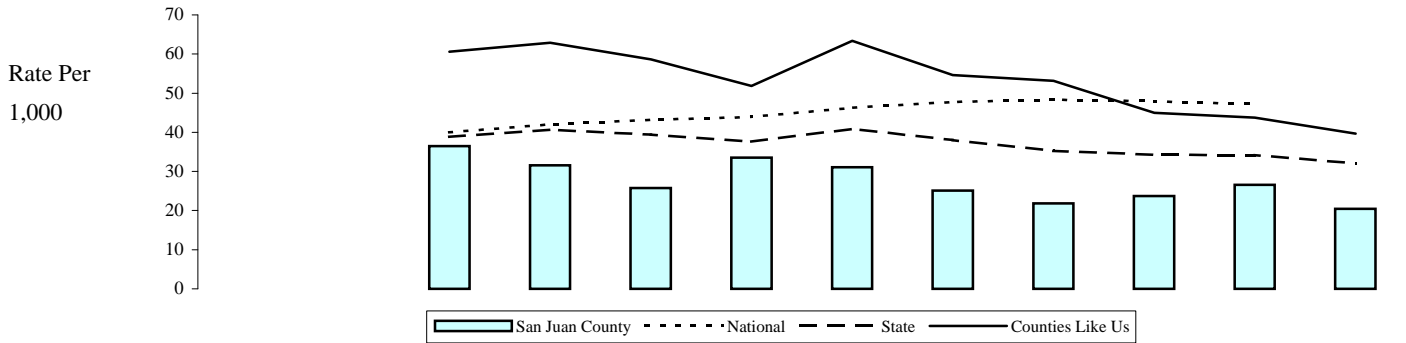
**State Source:** Department of Health, Center for Health Statistics, Dissolution and Annulment Data. Population Estimates: Washington State Department of Health

**National Source:** Calculated using Department of Health and Human Services, Centers for Disease Control and Prevention, National Center for Health Statistics, National Vital Statistics System, National Vital Statistics Reports Births, Marriages, Divorces, and Deaths, Provisional Data for August 2001

Updated  
11/3/2008

Family Domain: Family Problems

**Victims of Child Abuse and Neglect in Accepted Referrals**



|                   | 1997 | 1998 | 1999  | 2000  | 2001  | 2002  | 2003  | 2004  | 2005  | 2006  | 2007  | 2008  |
|-------------------|------|------|-------|-------|-------|-------|-------|-------|-------|-------|-------|-------|
| National          |      |      | 40.00 | 42.01 | 43.21 | 43.93 | 46.30 | 47.74 | 48.30 | 47.90 | 47.20 |       |
| State             |      |      | 38.88 | 40.63 | 39.43 | 37.60 | 40.87 | 38.06 | 35.26 | 34.30 | 34.15 | 32.07 |
| Counties Like Us  |      |      | 60.60 | 62.85 | 58.66 | 51.84 | 63.35 | 54.66 | 53.14 | 44.98 | 43.78 | 39.64 |
| San Juan County   |      |      | 36.48 | 31.53 | 25.74 | 33.52 | 31.08 | 25.07 | 21.87 | 23.69 | 26.61 | 20.44 |
| Accepted Victims  |      |      | 100   | 85    | 70    | 91    | 84    | 68    | 60    | 65    | 73    | 56    |
| Persons, birth-17 |      |      | 2,741 | 2,696 | 2,719 | 2,715 | 2,703 | 2,712 | 2,743 | 2,744 | 2,743 | 2,740 |

**Note:** The rates are the annual number of children (age birth-17) identified as victims in reports to Child Protective Services that were accepted for further action, per 1,000 children (age birth-17). Children are counted more than once if they are reported as a victim more than once during the year. A "referral" is a report of suspected child abuse. Child counts are now taken directly from Children's Administration, Administrative Services, Case Management Information System (CAMIS) rather than from CAMIS through Kid's Count as done in previous reports. Numbers may differ due to corrections or changes in location definition made in the database extraction process. Child location is derived from the residence at the time of referral. Suppression code definitions for yearly rates are explained in Technical Notes.

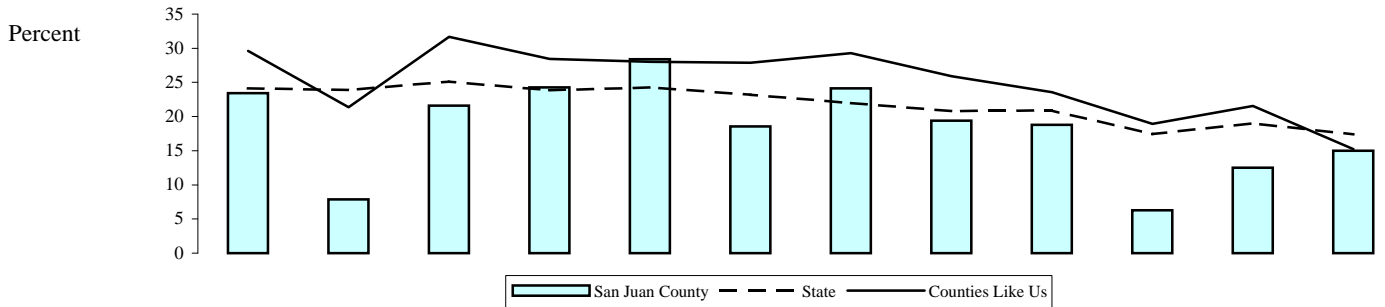
**State Source:** Department of Social and Health Services, Children's Administration, Administrative Services, Case Management Information System (CAMIS). Population Estimates: Washington State Department of Health

**National Source:** US Department of Health and Human Services Administration for Children and Families, Voluntary Cooperative Information System (VCIS), and estimates from Adoption, Foster Care Analysis Reporting System (AFCARS)

Updated  
5/20/2009

### Freshmen Who Leave School Before Their Senior Year

A Comparison of Senior Class as a Percent of Freshman Class Enrollment



|  | 1996 | 1997 | 1998 | 1999 | 2000 | 2001 | 2002 | 2003 | 2004 | 2005 | 2006 | 2007 |
|--|------|------|------|------|------|------|------|------|------|------|------|------|
|--|------|------|------|------|------|------|------|------|------|------|------|------|

|                     |       |       |       |       |       |       |       |       |       |       |       |       |
|---------------------|-------|-------|-------|-------|-------|-------|-------|-------|-------|-------|-------|-------|
| State               | 24.15 | 23.88 | 25.10 | 23.87 | 24.25 | 23.18 | 21.99 | 20.78 | 20.88 | 17.43 | 19.03 | 17.39 |
| Counties Like Us    | 29.59 | 21.36 | 31.65 | 28.44 | 28.01 | 27.89 | 29.29 | 25.90 | 23.57 | 18.93 | 21.57 | 15.21 |
| San Juan County     | 23.45 | 7.87  | 21.62 | 24.26 | 28.38 | 18.54 | 24.12 | 19.39 | 18.79 | 6.30  | 12.50 | 15.00 |
| Senior Attrition    | 34    | 10    | 32    | 41    | 42    | 28    | 41    | 32    | 28    | 8     | 19    | 21    |
| Freshman Enrollment | 145   | 127   | 148   | 169   | 148   | 151   | 170   | 165   | 149   | 127   | 152   | 140   |

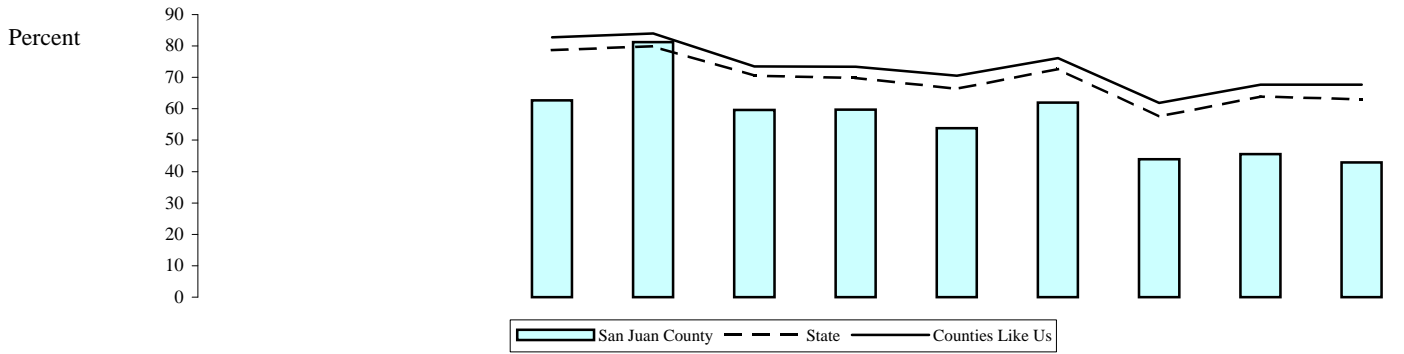
**Note:** Where senior enrollment is smaller than freshman enrollment the rate is the annual number fewer seniors as a percent of freshman October enrollment. When senior enrollment is greater than freshman enrollment the rate is zero.

**State Source:** Office of Superintendent of Public Instruction, Information Services, October Enrollment Files.

Updated  
3/26/2009

School Domain: Low School Test Scores

Poor Academic Performance, Grade 10 Washington Assessment of Student Learning (WASL)



|  | 1996 | 1997 | 1998 | 1999 | 2000 | 2001 | 2002 | 2003 | 2004 | 2005 | 2006 | 2007 |
|--|------|------|------|------|------|------|------|------|------|------|------|------|
|--|------|------|------|------|------|------|------|------|------|------|------|------|

|                    |  |  |  |       |       |       |       |       |       |       |       |       |
|--------------------|--|--|--|-------|-------|-------|-------|-------|-------|-------|-------|-------|
| State              |  |  |  | 78.69 | 79.88 | 70.51 | 69.78 | 66.38 | 72.68 | 57.51 | 63.92 | 62.97 |
| Counties Like Us   |  |  |  | 82.73 | 83.94 | 73.44 | 73.34 | 70.56 | 76.13 | 61.87 | 67.71 | 67.65 |
| San Juan County    |  |  |  | 62.69 | 81.25 | 59.63 | 59.73 | 53.85 | 61.99 | 43.98 | 45.54 | 42.86 |
| Low Scorers        |  |  |  | 42    | 117   | 96    | 89    | 77    | 106   | 73    | 46    | 33    |
| Tested, 10th grade |  |  |  | 67    | 144   | 161   | 149   | 143   | 171   | 166   | 101   | 77    |

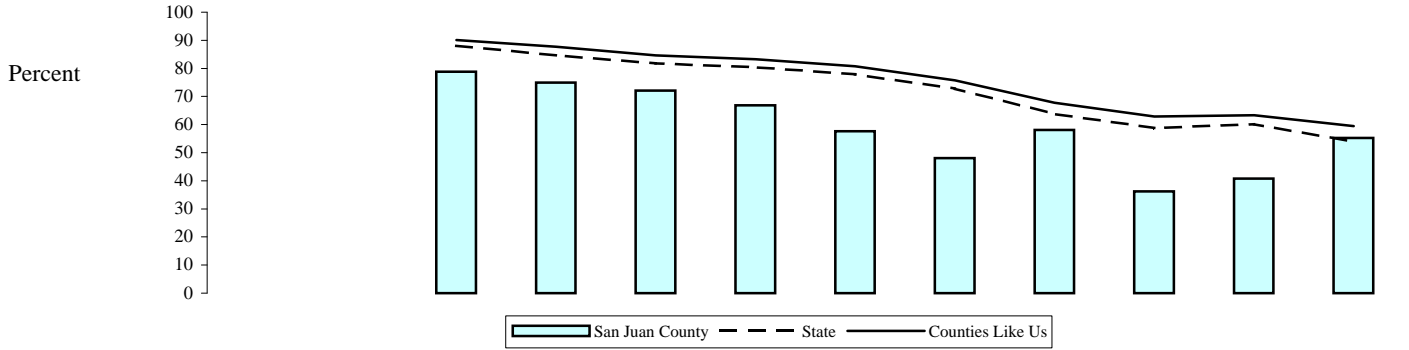
**Note:** The State and County rates are the annual number of tenth graders who failed one or more content areas in the Washington Assessment of Student Learning (WASL). Tests are given in the spring of the year. For example, data for 2002 is for students in the 10th grade during the school year 2001/2002. Previous reports used 1990 Census population distributions to allocate school district data to counties. Census population distributions for 2000 are now being used and event counts differ slightly in some counties.

**State Source:** Office of Superintendent of Public Instruction, Instructional Programs, Curriculum and Assessment, Grade 10 Failing In One Or More Content Areas.

Updated  
10/25/2007

School Domain: Low School Test Scores

Poor Academic Performance, Grade 7 Washington Assessment of Student Learning (WASL)



|  | 1996 | 1997 | 1998 | 1999 | 2000 | 2001 | 2002 | 2003 | 2004 | 2005 | 2006 | 2007 |
|--|------|------|------|------|------|------|------|------|------|------|------|------|
|--|------|------|------|------|------|------|------|------|------|------|------|------|

|                   |  |  |       |       |       |       |       |       |       |       |       |       |
|-------------------|--|--|-------|-------|-------|-------|-------|-------|-------|-------|-------|-------|
| State             |  |  | 88.06 | 84.67 | 81.74 | 80.45 | 77.90 | 72.76 | 63.80 | 58.74 | 60.11 | 53.91 |
| Counties Like Us  |  |  | 90.13 | 87.71 | 84.57 | 83.29 | 80.72 | 75.76 | 67.73 | 62.85 | 63.27 | 59.47 |
| San Juan County   |  |  | 78.81 | 75.00 | 72.06 | 66.87 | 57.62 | 48.12 | 58.14 | 36.18 | 40.80 | 55.21 |
| Low Scorers       |  |  | 119   | 126   | 98    | 111   | 87    | 64    | 75    | 55    | 51    | 53    |
| Tested, 7th grade |  |  | 151   | 168   | 136   | 166   | 151   | 133   | 129   | 152   | 125   | 96    |

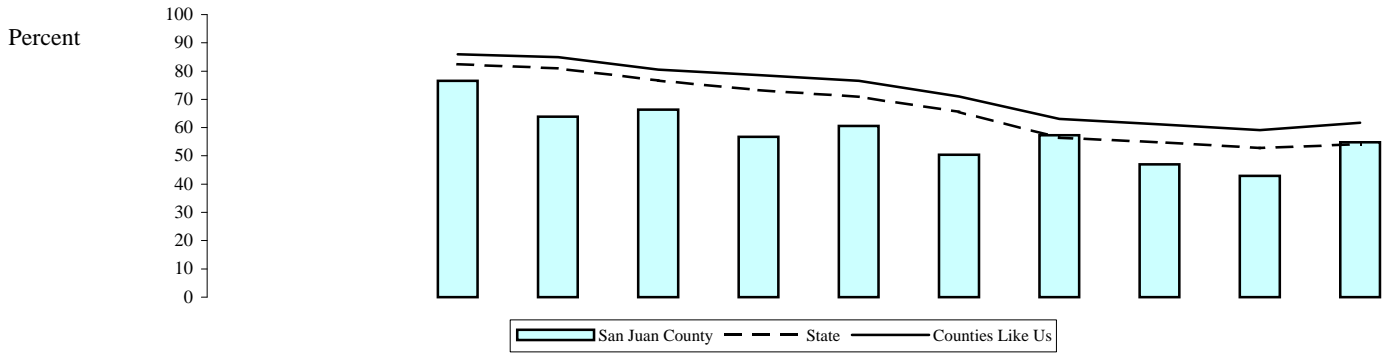
**Note:** The State and County rates are the annual number of seventh graders who failed one or more content areas in the Washington Assessment of Student Learning (WASL). Tests are given in the spring of the year. Data for 2002 is for students in the 7th grade during the school year 2001/2002. Previous reports used 1990 Census population distributions to allocate school district data to counties. Census population distributions for 2000 are now being used and event counts differ slightly in some counties.

**State Source:** Office of Superintendent of Public Instruction, Instructional Programs, Curriculum and Assessment, Grade 7 Failing In One Or More Content Areas.

Updated  
10/25/2007

School Domain: Low School Test Scores

Poor Academic Performance, Grade 4 Washington Assessment of Student Learning (WASL)



|  | 1996 | 1997 | 1998 | 1999 | 2000 | 2001 | 2002 | 2003 | 2004 | 2005 | 2006 | 2007 |
|--|------|------|------|------|------|------|------|------|------|------|------|------|
|--|------|------|------|------|------|------|------|------|------|------|------|------|

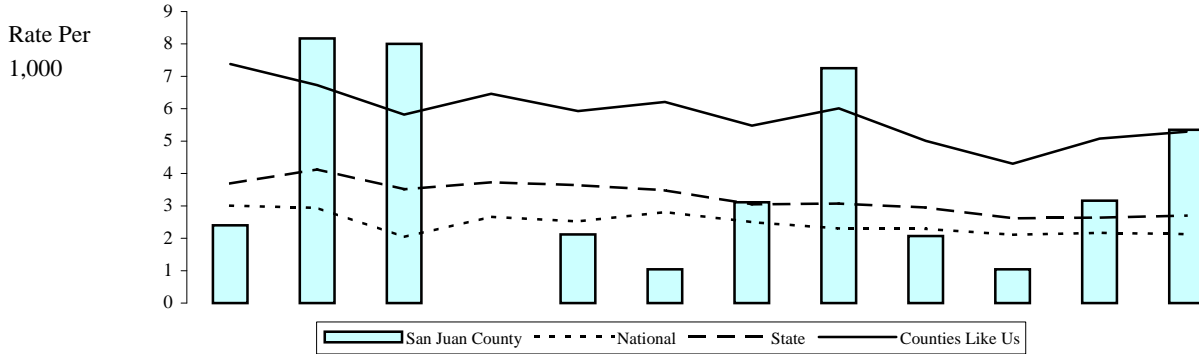
|                   |  |  |       |       |       |       |       |       |       |       |       |       |
|-------------------|--|--|-------|-------|-------|-------|-------|-------|-------|-------|-------|-------|
| State             |  |  | 82.42 | 80.97 | 76.68 | 73.30 | 70.86 | 65.56 | 56.39 | 54.78 | 52.83 | 54.08 |
| Counties Like Us  |  |  | 86.00 | 84.94 | 80.57 | 78.56 | 76.58 | 71.04 | 63.12 | 61.13 | 59.16 | 61.75 |
| San Juan County   |  |  | 76.51 | 63.82 | 66.42 | 56.78 | 60.56 | 50.40 | 57.28 | 47.01 | 42.97 | 54.81 |
| Low Scorers       |  |  | 127   | 97    | 91    | 67    | 86    | 63    | 59    | 63    | 55    | 57    |
| Tested, 4th grade |  |  | 166   | 152   | 137   | 118   | 142   | 125   | 103   | 134   | 128   | 104   |

**Note:** The State and County rates are the annual number of fourth graders who failed one or more content areas in the Washington Assessment of Student Learning (WASL). Tests are given in the spring of the year. Data for 2002 is for students in 4th grade during the school year 2001/2002. Previous reports used 1990 Census population distributions to allocate school district data to counties. Census population distributions for 2000 are now being used and event counts differ slightly in some counties.

**State Source:** Office of Superintendent of Public Instruction, Instructional Programs, Curriculum and Assessment, Grade 4 Failing In One Or More Content Areas.

Updated  
10/25/2007

**Arrests (Age 10-14), Alcohol- or Drug-Related**



|                   | 1996 | 1997 | 1998 | 1999 | 2000 | 2001 | 2002 | 2003 | 2004 | 2005 | 2006 | 2007 |
|-------------------|------|------|------|------|------|------|------|------|------|------|------|------|
| National          | 3.01 | 2.94 | 2.04 | 2.66 | 2.52 | 2.81 | 2.50 | 2.30 | 2.29 | 2.11 | 2.17 | 2.13 |
| State             | 3.69 | 4.13 | 3.51 | 3.73 | 3.64 | 3.48 | 3.05 | 3.07 | 2.95 | 2.62 | 2.64 | 2.70 |
| Counties Like Us  | 7.38 | 6.73 | 5.82 | 6.46 | 5.93 | 6.21 | 5.48 | 6.01 | 5.01 | 4.30 | 5.08 | 5.29 |
| San Juan County   | 2.40 | 8.17 | 8.00 | 0.00 | 2.12 | 1.04 | 3.11 | 7.25 | 2.07 | 1.04 | 3.16 | 5.35 |
| Arrests, 10-14    | 2    | 7    | 7    | 0    | 2    | 1    | 3    | 7    | 2    | 1    | 3    | 5    |
| Adjst'd Pop 10-14 | 833  | 857  | 875  | 931  | 942  | 957  | 965  | 965  | 965  | 963  | 949  | 935  |

**Note:** The rates are the annual number of arrests of younger adolescents (age 10-14) for alcohol and drug law violations, per 1,000 adolescents (age 10-14). Alcohol violations include all crimes involving driving under the influence, liquor law violations, and drunkenness. For children, arrests for liquor law violations are usually arrests for minor in possession. Drug law violations include all crimes involving sale, manufacturing, and possession of drugs.

1) Data may differ from our last report because of refinements to our population adjustment process. Denominators are adjusted by subtracting the population of police agencies that did not report arrests to Uniform Crime Report (UCR). In spite of this population adjustment, when the non-reporting police jurisdiction is where much of the crime occurs, the rate for the county will be lower than it would be if that jurisdiction was included. For percent subtracted, suppression code definitions and the agencies not reporting, see the Technical Notes and the appendix on Non-Reporting Agencies and Population.

2) The DUI portion of this measure is likely understated, because arrests made by the State Patrol (approximately 40% of DUI arrests) are not attributable to counties. State Patrol arrests are included in the state rates.

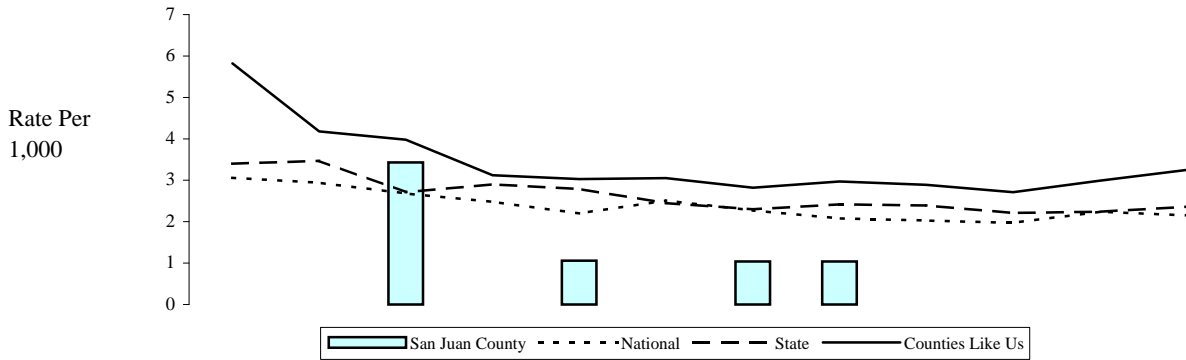
**State Source:** Washington Association of Sheriffs and Police Chiefs, Uniform Crime Report (UCR), Tables 40 and 50. Population Estimates: Washington State Department of Health

**National Source:** US Department of Justice, Bureau of Justice Statistics Sourcebook of Criminal Justice Statistics Online

Updated  
10/21/2008

Individual/Peer Domain: Early Criminal Justice Involvement

**Arrests (Age 10-14), Vandalism**



|                   | 1996 | 1997 | 1998 | 1999 | 2000 | 2001 | 2002 | 2003 | 2004 | 2005 | 2006 | 2007 |
|-------------------|------|------|------|------|------|------|------|------|------|------|------|------|
| National          | 3.06 | 2.94 | 2.68 | 2.48 | 2.20 | 2.51 | 2.27 | 2.08 | 2.03 | 1.97 | 2.24 | 2.15 |
| State             | 3.40 | 3.47 | 2.71 | 2.90 | 2.79 | 2.45 | 2.30 | 2.42 | 2.39 | 2.21 | 2.24 | 2.36 |
| Counties Like Us  | 5.82 | 4.18 | 3.98 | 3.12 | 3.03 | 3.05 | 2.82 | 2.97 | 2.89 | 2.71 | 2.99 | 3.25 |
| San Juan County   | 0.00 | 0.00 | 3.43 | 0.00 | 1.06 | 0.00 | 1.04 | 1.04 | 0.00 | 0.00 | 0.00 | 0.00 |
| Arrests, 10-14    | 0    | 0    | 3    | 0    | 1    | 0    | 1    | 1    | 0    | 0    | 0    | 0    |
| Adjst'd Pop 10-14 | 833  | 857  | 875  | 931  | 942  | 957  | 965  | 965  | 965  | 963  | 949  | 935  |

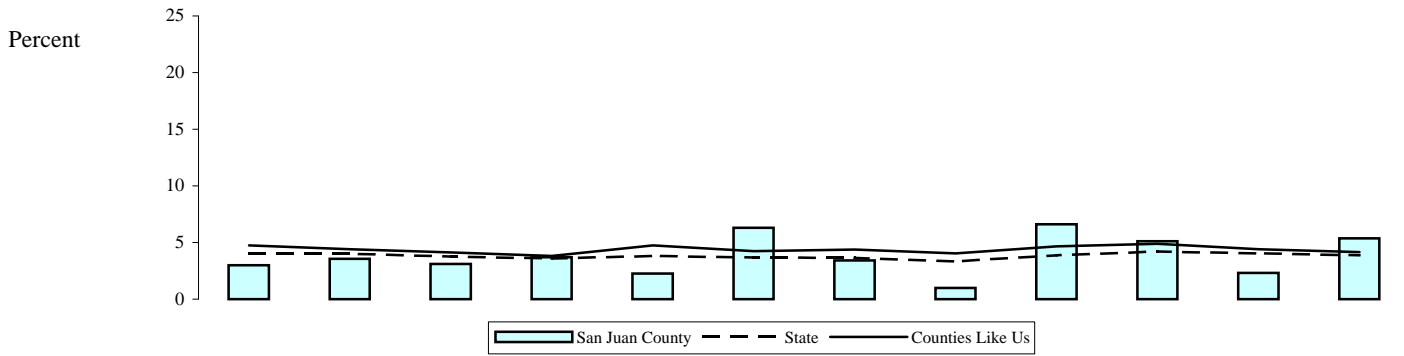
**Note:** The rates are the annual number of arrests of younger adolescents (age 10-14) for vandalism (including residence, non-residence, vehicles, venerated objects, police cars, or other) per 1,000 adolescents (age 10-14). Data may differ from our last report because of refinements to our population adjustment process. Denominators are adjusted by subtracting the population of police agencies that did not report arrests to UCR. In spite of this population adjustment, when the non-reporting police jurisdiction is where much of the crime occurs, the rate for the county will be lower than it would be if that jurisdiction was included. For percent subtracted, suppression code definitions and the agencies not reporting, see the Technical Notes and the appendix on Non-Reporting Agencies and Population.

**State Source:** Washington Association of Sheriffs and Police Chiefs, Uniform Crime Report (UCR), Tables 40 and 50. Population Estimates: Washington State Department of Health

**National Source:** US Department of Justice, Bureau of Justice Statistics Sourcebook of Criminal Justice Statistics Online

Updated  
10/21/2008

### Injury or Accident Hospitalizations for Children



|                  | 1996 | 1997 | 1998 | 1999 | 2000 | 2001 | 2002 | 2003 | 2004 | 2005 | 2006 | 2007 |
|------------------|------|------|------|------|------|------|------|------|------|------|------|------|
| State            | 4.05 | 4.01 | 3.77 | 3.60 | 3.82 | 3.67 | 3.65 | 3.34 | 3.87 | 4.21 | 4.03 | 3.86 |
| Counties Like Us | 4.75 | 4.41 | 4.12 | 3.82 | 4.74 | 4.23 | 4.37 | 4.04 | 4.65 | 4.89 | 4.41 | 4.14 |
| San Juan County  | 2.99 | 3.55 | 3.10 | 3.70 | 2.27 | 6.29 | 3.42 | 1.00 | 6.62 | 5.11 | 2.33 | 5.37 |
| Injuries         | 4    | 5    | 4    | 5    | 3    | 9    | 4    | 1    | 9    | 7    | 3    | 8    |
| Hospitalizations | 134  | 141  | 129  | 135  | 132  | 143  | 117  | 100  | 136  | 137  | 129  | 149  |

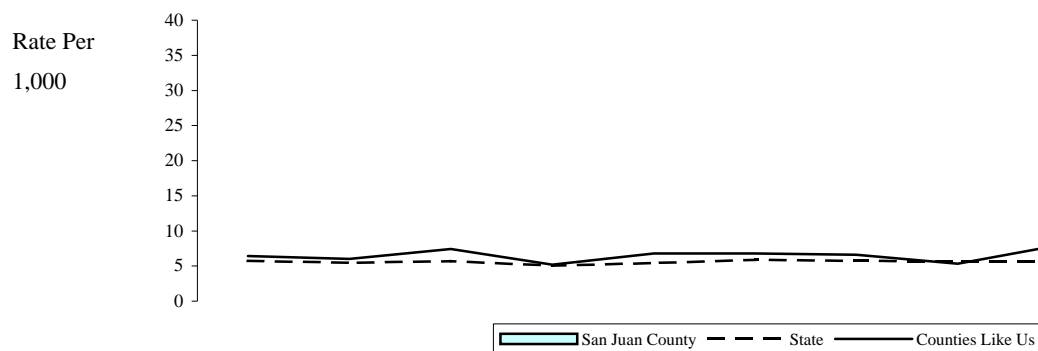
**Note:** The rate is the annual number of child injury or accident hospitalizations as a percent of all hospitalizations for children (age birth-17). Suppression code definitions for yearly rates are explained in Technical Notes. Due to contractual agreement data may not be displayed for areas with less than 100 hospitalizations.

**State Source:** Department of Health, Office of Hospital and Patient Data Systems, Comprehensive Hospital Abstract Reporting System (CHARS)

Updated  
9/2/2008

## Problem Outcomes: Child or Family Health

### Infant Mortality (Under 1 Year)



|                  | 1996 | 1997 | 1998 | 1999 | 2000 | 2001 | 2002 | 2003 | 2004 | 2005 | 2006 | 2007 |
|------------------|------|------|------|------|------|------|------|------|------|------|------|------|
| National         | 7.61 | 7.48 | 7.54 | 7.39 | 7.25 | 6.85 | 7.01 | 7.00 | 6.81 | 6.87 | 6.82 |      |
| State            | 5.74 | 5.48 | 5.68 | 5.07 | 5.44 | 5.88 | 5.73 | 5.67 | 5.69 | 5.22 | 4.99 | 5.14 |
| Counties Like Us | 6.44 | 6.02 | 7.42 | 5.19 | 6.80 | 6.77 | 6.62 | 5.33 | 7.98 | 4.10 | 4.64 | 4.00 |
| San Juan County  | 0.00 | SP   | SP   | SP   | SP   | SP   | SP   | SP   | SP   | SP   | SP   | SP   |
| deaths, infants  | 0    | 0    | 0    | 0    | 0    | 0    | 0    | 0    | 0    | 0    | 1    | 0    |
| Infants < 1 year | 103  | 99   | 95   | 94   | 88   | 89   | 89   | 89   | 90   | 91   | 92   | 93   |

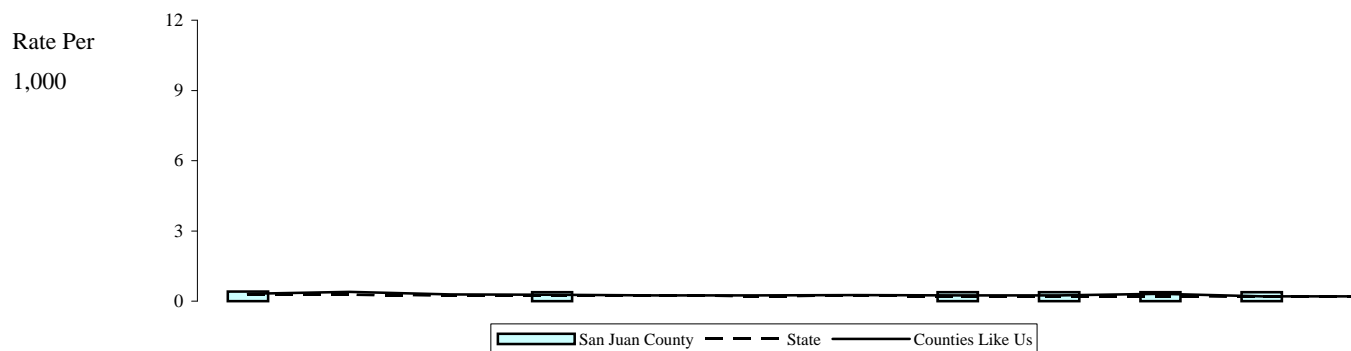
**Note:** The rate is the annual number of deaths, of infants under one year of age, per 1,000 population of infants under one year of age. Suppression code definitions for yearly rates are explained in Technical Notes. Rates are not reported when fewer than 100 deaths occurred in an area.

**State Source:** Department of Health, Center for Health Statistics, Death Certificate Data File. Population Estimates: Washington State Department of Health

Updated  
11/21/2008

## Problem Outcomes: Child or Family Health

### Child Mortality (Ages 1-17)



|                     | 1996  | 1997  | 1998  | 1999  | 2000  | 2001  | 2002  | 2003  | 2004  | 2005  | 2006  | 2007  |
|---------------------|-------|-------|-------|-------|-------|-------|-------|-------|-------|-------|-------|-------|
| National            | 34.38 | 34.04 | 34.12 | 34.68 | 34.68 | 34.83 | 35.08 |       |       |       |       |       |
| State               | 0.27  | 0.28  | 0.24  | 0.24  | 0.24  | 0.22  | 0.23  | 0.22  | 0.21  | 0.21  | 0.19  | 0.18  |
| Counties Like Us    | 0.31  | 0.40  | 0.29  | 0.27  | 0.25  | 0.25  | 0.26  | 0.25  | 0.24  | 0.31  | 0.20  | 0.21  |
| San Juan County     | 0.41  | 0.00  | 0.00  | 0.38  | 0.00  | 0.00  | 0.00  | 0.38  | 0.38  | 0.38  | 0.38  | 0.00  |
| Child Deaths        | 1     | 0     | 0     | 1     | 0     | 0     | 0     | 1     | 1     | 1     | 1     | 0     |
| Children (age 1-17) | 2,459 | 2,504 | 2,535 | 2,647 | 2,608 | 2,630 | 2,626 | 2,614 | 2,623 | 2,652 | 2,652 | 2,650 |

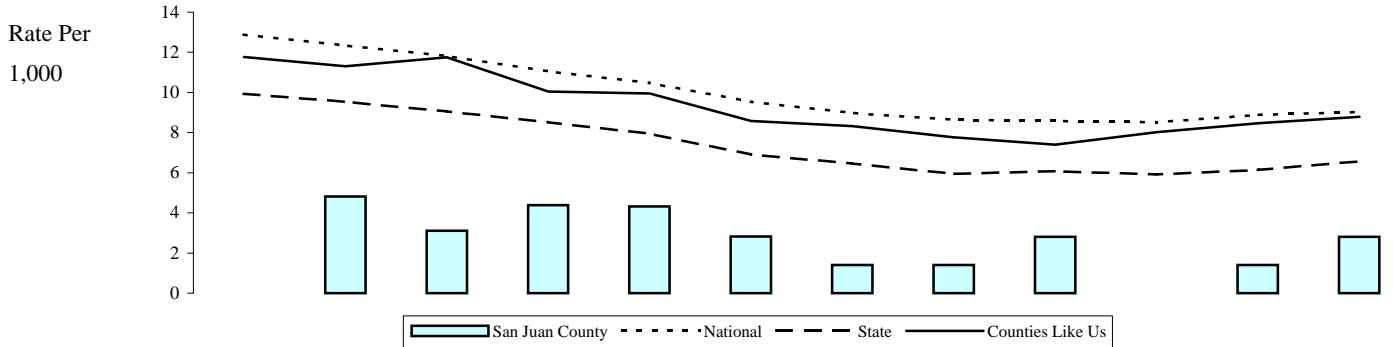
**Note:** The rate is the annual number of deaths, of children 1 to 17 years of age, per 1,000 population of children 1 to 17 years of age. Suppression code definitions for yearly rates are explained in Technical Notes. Rates are not reported when fewer than 100 deaths occurred in an area.

**State Source:** Department of Health, Center for Health Statistics, Death Certificate Data File. Population Estimates: Washington State Department of Health

Updated  
11/21/2008

Problem Outcomes: Child or Family Health

**Births (Mothers Age 10-17)**



|                  | 1996  | 1997  | 1998  | 1999  | 2000  | 2001 | 2002 | 2003 | 2004 | 2005 | 2006 | 2007 |
|------------------|-------|-------|-------|-------|-------|------|------|------|------|------|------|------|
| National         | 12.88 | 12.34 | 11.81 | 11.05 | 10.48 | 9.53 | 8.97 | 8.64 | 8.58 | 8.52 | 8.88 | 9.03 |
| State            | 9.93  | 9.54  | 9.06  | 8.52  | 7.94  | 6.91 | 6.46 | 5.95 | 6.07 | 5.91 | 6.14 | 6.57 |
| Counties Like Us | 11.76 | 11.31 | 11.75 | 10.04 | 9.95  | 8.58 | 8.32 | 7.77 | 7.40 | 8.02 | 8.46 | 8.78 |
| San Juan County  | 0.00  | 4.81  | 3.11  | 4.38  | 4.32  | 2.83 | 1.41 | 1.41 | 2.81 | 0.00 | 1.40 | 2.81 |
| Birthed, 10-17   | 0     | 3     | 2     | 3     | 3     | 2    | 1    | 1    | 2    | 0    | 1    | 2    |
| Females, 10-17   | 601   | 624   | 643   | 685   | 694   | 706  | 710  | 710  | 712  | 719  | 715  | 711  |

**Note:** The rate is the annual number of live births to adolescents (age 10-17) per 1,000 females (age 10-17). Rate changes in data result from on-going updates to birth records. Suppression code definitions for yearly rates are explained in Technical Notes. Due to contractual agreement data may not be displayed for areas with less than 100 births.

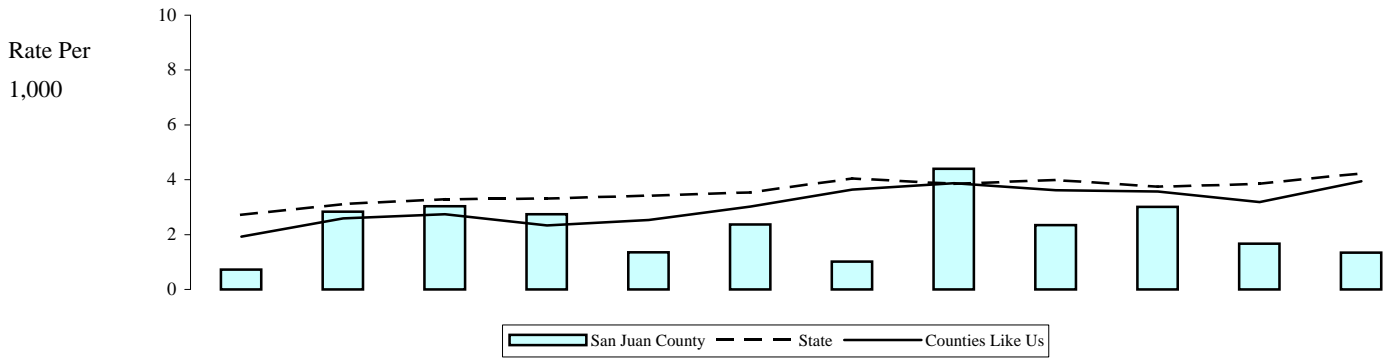
**State Source:** Department of Health, Center for Health Statistics, Birth Certificate Data File. Population Estimates: Washington State Department of Health

**National Source:** U.S. Department of Health and Human Services, Centers for Disease Control and Health Statistics National Center for Health Statistics, Division of Health Services, National Vital Statistics Reports

Updated

11/17/2008

**Sexually Transmitted Disease Cases (Birth-19)**



|                   | 1997  | 1998  | 1999  | 2000  | 2001  | 2002  | 2003  | 2004  | 2005  | 2006  | 2007  | 2008  |
|-------------------|-------|-------|-------|-------|-------|-------|-------|-------|-------|-------|-------|-------|
| State             | 2.72  | 3.11  | 3.29  | 3.31  | 3.42  | 3.53  | 4.05  | 3.85  | 3.99  | 3.75  | 3.85  | 4.24  |
| Counties Like Us  | 1.93  | 2.59  | 2.74  | 2.33  | 2.53  | 3.02  | 3.64  | 3.87  | 3.62  | 3.57  | 3.18  | 3.94  |
| San Juan County   | 0.72  | 2.83  | 3.03  | 2.74  | 1.35  | 2.37  | 1.02  | 4.40  | 2.35  | 3.01  | 1.67  | 1.34  |
| Cases, birth-19   | 2     | 8     | 9     | 8     | 4     | 7     | 3     | 13    | 7     | 9     | 5     | 4     |
| Persons, birth-19 | 2,781 | 2,829 | 2,967 | 2,922 | 2,953 | 2,950 | 2,939 | 2,952 | 2,985 | 2,986 | 2,989 | 2,991 |

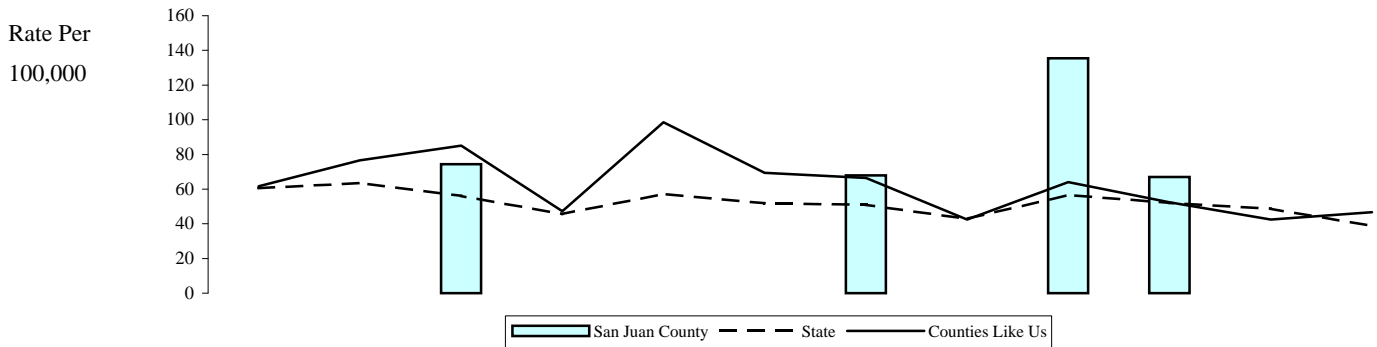
**Note:** The State and County rates are the annual number of reported cases of gonorrhea, syphilis, or Chlamydia in children (age birth-19) per 1,000 adolescents (age birth-19). Suppression code definitions for yearly rates are explained in Technical Notes. Due to contractual agreement some data may not be for populations less than 100.

**State Source:** Department of Health, Sexually Transmitted Disease (STD) Services, Sexually Transmitted Disease Reported Cases. Population Estimates: Washington State Department of Health

Updated  
4/16/2009

Problem Outcomes: Child or Family Health

**Suicide and Suicide Attempts (Age 10-17)**



|                   | 1996  | 1997  | 1998  | 1999  | 2000  | 2001  | 2002  | 2003  | 2004   | 2005  | 2006  | 2007  |
|-------------------|-------|-------|-------|-------|-------|-------|-------|-------|--------|-------|-------|-------|
| State             | 60.60 | 63.43 | 56.03 | 45.61 | 57.23 | 51.86 | 50.99 | 42.79 | 56.73  | 52.01 | 48.75 | 38.72 |
| Counties Like Us  | 61.55 | 76.62 | 85.06 | 47.30 | 98.50 | 69.44 | 66.47 | 42.47 | 63.96  | 52.46 | 42.48 | 46.78 |
| San Juan County   | 0.00  | 0.00  | 74.46 | 0.00  | 0.00  | 0.00  | 67.89 | 0.00  | 135.41 | 67.07 | 0.00  | 0.00  |
| Suicide & Attempt | 0     | 0     | 1     | 0     | 0     | 0     | 1     | 0     | 2      | 1     | 0     | 0     |
| Persons, 10-17    | 1,260 | 1,306 | 1,343 | 1,428 | 1,442 | 1,464 | 1,473 | 1,473 | 1,477  | 1,491 | 1,484 | 1,475 |

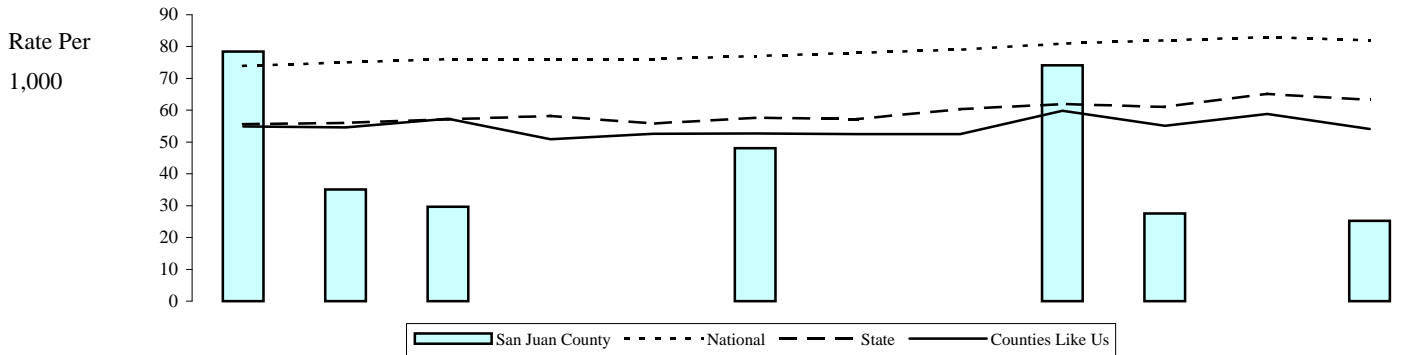
**Note:** The rate is the annual number of adolescents (age 10-17) who committed suicide or were admitted to the hospital for suicide attempts, per 100,000 adolescents (age 10-17). Suicides are based on death certificate information. Suicide attempts are based on hospital admissions, but do not include admissions to federal hospitals. Suppression code definitions for yearly rates are explained in Technical Notes. Due to contractual agreement data may not be displayed for locations with adolescent populations less than 100.

**State Source:** Department of Health, Office of Hospital and Patient Data Systems, Comprehensive Hospital Abstract Reporting System (CHARS) and Department of Health, Center for Health Statistics Death Certificate Data. Population Estimates: Washington State Department of Health

Updated  
11/21/2008

Problem Outcomes: Child or Family Health

Low Birthweight Babies



|                   | 1996  | 1997  | 1998  | 1999  | 2000  | 2001  | 2002  | 2003  | 2004  | 2005  | 2006  | 2007  |
|-------------------|-------|-------|-------|-------|-------|-------|-------|-------|-------|-------|-------|-------|
| National          | 73.90 | 75.00 | 76.00 | 76.00 | 76.00 | 77.00 | 78.00 | 79.00 | 81.00 | 82.00 | 83.00 | 82.00 |
| State             | 55.59 | 56.06 | 57.08 | 58.22 | 55.76 | 57.64 | 57.25 | 60.35 | 61.96 | 61.04 | 65.16 | 63.27 |
| Counties Like Us  | 54.87 | 54.57 | 57.28 | 50.90 | 52.60 | 52.69 | 52.53 | 52.48 | 59.83 | 55.08 | 58.86 | 54.12 |
| San Juan County   | 78.43 | 35.09 | 29.70 | SP    | SP    | 48.08 | SP    | SP    | 74.07 | 27.52 | SP    | 25.21 |
| Low-weight Babies | 8     | 4     | 3     | 5     | 3     | 5     | 3     | 4     | 8     | 3     | 5     | 3     |
| All Births        | 102   | 114   | 101   | 93    | 92    | 104   | 88    | 88    | 108   | 109   | 87    | 119   |

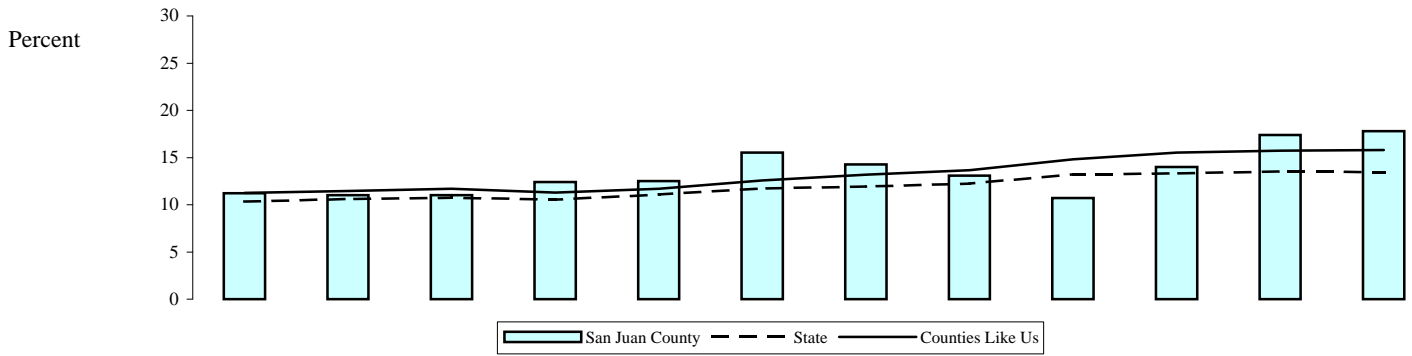
**Note:** The rate is the annual number of babies born with low birthweight, per 1,000 live births. Low birthweight is less than 2,500 grams. Rate changes in data result from on-going updates to birth records. No rate is given when the number of live births is less than 100 in the geographic area. Suppression code definitions for yearly rates are explained in Technical Notes.

**State Source:** Department of Health, Center for Health Statistics, Birth Certificate Data File

**National Source:** U.S. Department of Health and Human Services, Centers for Disease Control and Health Statistics National Center for Health Statistics, Division of Health Services, WONDER Data System

Updated  
11/17/2008

### Injury or Accident Hospitalizations for Women



|  | 1996 | 1997 | 1998 | 1999 | 2000 | 2001 | 2002 | 2003 | 2004 | 2005 | 2006 | 2007 |
|--|------|------|------|------|------|------|------|------|------|------|------|------|
|--|------|------|------|------|------|------|------|------|------|------|------|------|

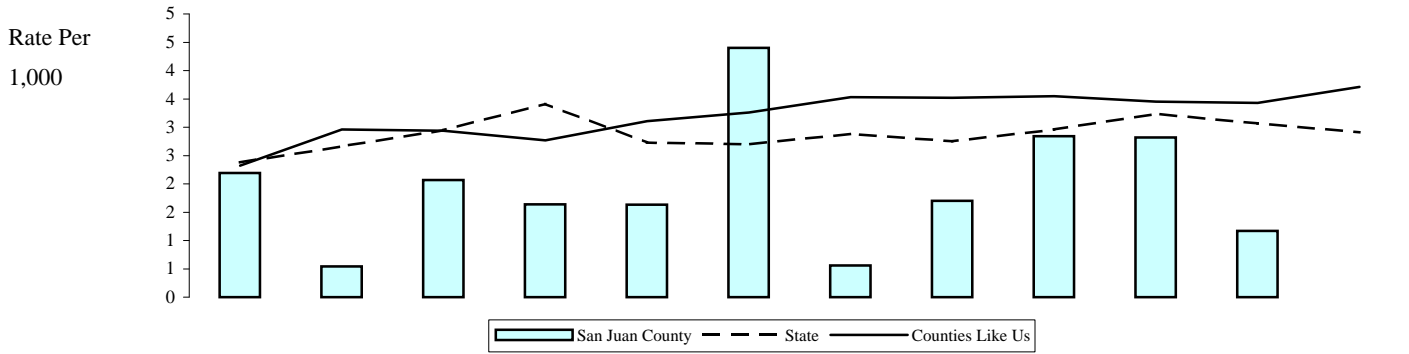
|                  |       |       |       |       |       |       |       |       |       |       |       |       |
|------------------|-------|-------|-------|-------|-------|-------|-------|-------|-------|-------|-------|-------|
| State            | 10.35 | 10.61 | 10.75 | 10.55 | 11.08 | 11.73 | 11.93 | 12.25 | 13.21 | 13.32 | 13.53 | 13.45 |
| Counties Like Us | 11.25 | 11.47 | 11.71 | 11.29 | 11.70 | 12.57 | 13.20 | 13.67 | 14.80 | 15.53 | 15.72 | 15.78 |
| San Juan County  | 11.23 | 11.03 | 11.03 | 12.39 | 12.50 | 15.51 | 14.26 | 13.10 | 10.72 | 14.01 | 17.38 | 17.80 |
| Injuries         | 43    | 44    | 48    | 58    | 56    | 78    | 69    | 60    | 52    | 79    | 97    | 113   |
| Hospitalizations | 383   | 399   | 435   | 468   | 448   | 503   | 484   | 458   | 485   | 564   | 558   | 635   |

**Note:** The rate is the annual number of injury or accident hospitalizations for women as a percent of all hospitalizations for women (age 18+). Suppression code definitions for yearly rates are explained in Technical Notes. Due to contractual agreement data may not be displayed for areas with less than 100 hospitalizations.

**State Source:** Department of Health, Office of Hospital and Patient Data Systems, Comprehensive Hospital Abstract Reporting System (CHARS).

Updated  
9/2/2008

**Weapons Incidents in School**



|  | 1996 | 1997 | 1998 | 1999 | 2000 | 2001 | 2002 | 2003 | 2004 | 2005 | 2006 | 2007 |
|--|------|------|------|------|------|------|------|------|------|------|------|------|
|--|------|------|------|------|------|------|------|------|------|------|------|------|

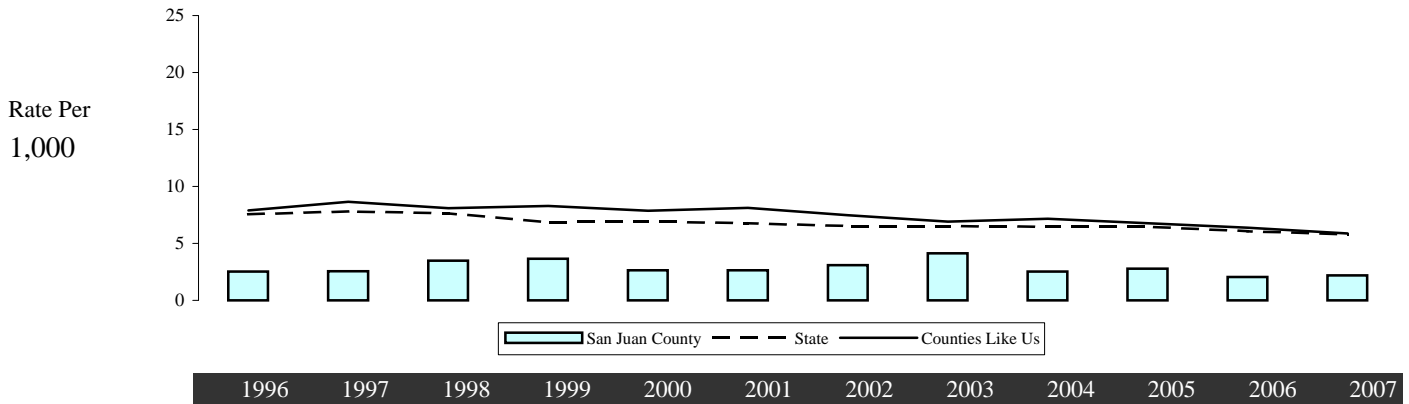
|                  |       |       |       |       |       |       |       |       |       |       |       |       |
|------------------|-------|-------|-------|-------|-------|-------|-------|-------|-------|-------|-------|-------|
| State            | 2.38  | 2.66  | 2.95  | 3.41  | 2.73  | 2.70  | 2.88  | 2.75  | 2.96  | 3.24  | 3.07  | 2.91  |
| Counties Like Us | 2.32  | 2.96  | 2.94  | 2.77  | 3.11  | 3.26  | 3.53  | 3.52  | 3.55  | 3.45  | 3.43  | 3.71  |
| San Juan County  | 2.19  | 0.54  | 2.07  | 1.64  | 1.63  | 4.40  | 0.56  | 1.70  | 2.84  | 2.82  | 1.17  | 0.00  |
| Incidents        | 4     | 1     | 4     | 3     | 3     | 8     | 1     | 3     | 5     | 5     | 2     | 0     |
| Enrollment       | 1,827 | 1,861 | 1,931 | 1,834 | 1,840 | 1,818 | 1,770 | 1,763 | 1,758 | 1,776 | 1,713 | 1,675 |

**Note:** The rate is the annual number of reported incidents of guns and other weapons at any grade level per 1000 students enrolled in October of all grades.

**State Source:** Office of Superintendent of Public Instruction, Information Services, Safe and Drug-free Schools: Report to the Legislature on Weapons in Schools RCW 28A.320.130

Updated  
12/23/2008

Offences, Domestic Violence



|                  | 1996   | 1997   | 1998   | 1999   | 2000   | 2001   | 2002   | 2003   | 2004   | 2005   | 2006   | 2007   |
|------------------|--------|--------|--------|--------|--------|--------|--------|--------|--------|--------|--------|--------|
| State            | 7.56   | 7.80   | 7.63   | 6.86   | 6.92   | 6.77   | 6.51   | 6.51   | 6.46   | 6.47   | 6.06   | 5.79   |
| Counties Like Us | 7.89   | 8.66   | 8.10   | 8.29   | 7.87   | 8.12   | 7.48   | 6.90   | 7.16   | 6.77   | 6.37   | 5.88   |
| San Juan County  | 2.54   | 2.56   | 3.47   | 3.64   | 2.63   | 2.64   | 3.08   | 4.12   | 2.52   | 2.77   | 2.04   | 2.20   |
| Offences         | 32     | 33     | 46     | 51     | 37     | 38     | 45     | 61     | 38     | 43     | 32     | 35     |
| Persons          | 12,592 | 12,906 | 13,239 | 14,019 | 14,077 | 14,400 | 14,602 | 14,800 | 15,100 | 15,500 | 15,700 | 15,900 |

**Note:** The rate is the annual number of domestic violence-related offences, per 1,000 persons. Domestic violence includes any violence of one family member against another family member. Family can include spouses, former spouses, parents who have children in common regardless of marital status, adults who live in the same household, as well as parents and their children.

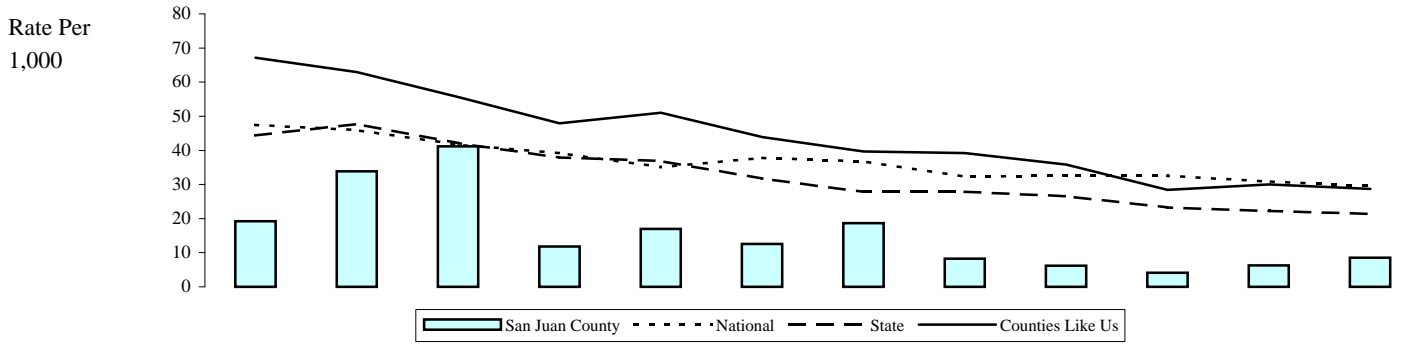
Offences differ from arrests. While funding and grants are associated with participation, reporting is not mandatory. Offences are incidence reporting. When more than one victim is involved an offence is filed for each victim. Multiple property violations performed at the same incident are counted as one offence. However when both types of events happen, only the victim incidents are reported as offences. Offences focus on the nature of the crime, while arrests focus on the apprehended accused perpetrator. Many offences occur without arresting perpetrators.

Denominators are adjusted by subtracting the population of police agencies that did not report offences. In spite of this population adjustment, when the non-reporting police jurisdiction is where much of the crime occurs, the rate for the county will be lower than it would be if that jurisdiction was included. For percent subtracted and the agencies not reporting, see the appendix on Non-Reporting Agencies and Population. Suppression code definitions for yearly rates are explained in Technical Notes.

**State Source:** Washington Association of Sheriffs and Police Chiefs, UCR Division. Population Estimates: Washington State Department of Health

Updated  
10/21/2008

**Total Arrests of Young Adolescents (Age 10-14)**



|                   | 1996  | 1997  | 1998  | 1999  | 2000  | 2001  | 2002  | 2003  | 2004  | 2005  | 2006  | 2007  |
|-------------------|-------|-------|-------|-------|-------|-------|-------|-------|-------|-------|-------|-------|
| National          | 47.44 | 45.93 | 41.66 | 39.19 | 35.05 | 37.82 | 36.76 | 32.27 | 32.61 | 32.50 | 30.90 | 29.57 |
| State             | 44.39 | 47.77 | 42.14 | 37.85 | 36.84 | 31.69 | 27.82 | 27.87 | 26.57 | 23.29 | 22.20 | 21.42 |
| Counties Like Us  | 67.15 | 62.92 | 55.65 | 47.97 | 50.98 | 43.85 | 39.63 | 39.18 | 35.83 | 28.45 | 29.98 | 28.68 |
| San Juan County   | 19.21 | 33.84 | 41.14 | 11.82 | 16.99 | 12.54 | 18.65 | 8.29  | 6.22  | 4.15  | 6.32  | 8.56  |
| Arrests, 10-14    | 16    | 29    | 36    | 11    | 16    | 12    | 18    | 8     | 6     | 4     | 6     | 8     |
| Adjst'd Pop 10-14 | 833   | 857   | 875   | 931   | 942   | 957   | 965   | 965   | 965   | 963   | 949   | 935   |

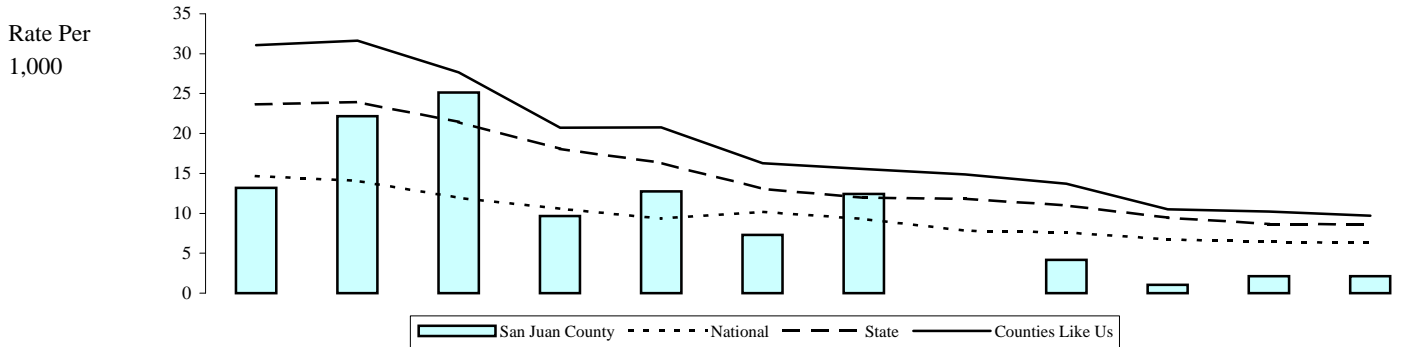
**Note:** The rate is the annual number of arrests of younger adolescents (age 10-14) for any crime, per 1,000 adolescents (age 10-14). Data may differ from our last report because of refinements to our population adjustment process. Denominators are adjusted by subtracting the population of police agencies that did not report arrests to UCR. In spite of this population adjustment, when the non-reporting police jurisdiction is where much of the crime occurs, the rate will be lower than it would be if that jurisdiction was included. For percent subtracted, suppression code definitions and the agencies not reporting, see the Technical Notes and the appendix on Non-Reporting Agencies and Population.

**State Source:** Washington Association of Sheriffs and Police Chiefs, Uniform Crime Report (UCR), Tables 40 and 50. Population Estimates: Washington State Department of Health

**National Source:** US Department of Justice, Bureau of Justice Statistics Sourcebook of Criminal Justice Statistics Online

Updated  
10/21/2008

**Arrests (Age 10-14), Property Crime**



|                   | 1996  | 1997  | 1998  | 1999  | 2000  | 2001  | 2002  | 2003  | 2004  | 2005  | 2006  | 2007 |
|-------------------|-------|-------|-------|-------|-------|-------|-------|-------|-------|-------|-------|------|
| National          | 14.68 | 14.07 | 11.93 | 10.59 | 9.34  | 10.18 | 9.31  | 7.82  | 7.63  | 6.73  | 6.40  | 6.28 |
| State             | 23.67 | 23.92 | 21.45 | 18.07 | 16.32 | 13.05 | 11.96 | 11.84 | 10.97 | 9.47  | 8.64  | 8.60 |
| Counties Like Us  | 31.06 | 31.65 | 27.67 | 20.72 | 20.77 | 16.29 | 15.54 | 14.86 | 13.71 | 10.51 | 10.23 | 9.70 |
| San Juan County   | 13.21 | 22.17 | 25.14 | 9.67  | 12.74 | 7.31  | 12.44 | 0.00  | 4.15  | 1.04  | 2.11  | 2.14 |
| Arrests, 10-14    | 11    | 19    | 22    | 9     | 12    | 7     | 12    | 0     | 4     | 1     | 2     | 2    |
| Adjst'd Pop 10-14 | 833   | 857   | 875   | 931   | 942   | 957   | 965   | 965   | 965   | 963   | 949   | 935  |

**Note:** The rate is the annual number of arrests of younger adolescents (age 10-14) for property crimes, per 1,000 adolescents (age 10-14). Property crimes include all crimes involving burglary, larceny-theft, motor vehicle theft, and arson. Data may differ from our last report because of refinements to our population adjustment process. Denominators are adjusted by subtracting the population of police agencies that did not report arrests to UCR. In spite of this population adjustment, when the non-reporting police jurisdiction is where much of the crime occurs, the rate for the area will be lower than it would be if that jurisdiction was included. For percent subtracted, suppression code definitions and the agencies not reporting, see the Technical Notes and the appendix on Non-Reporting Agencies and Population.

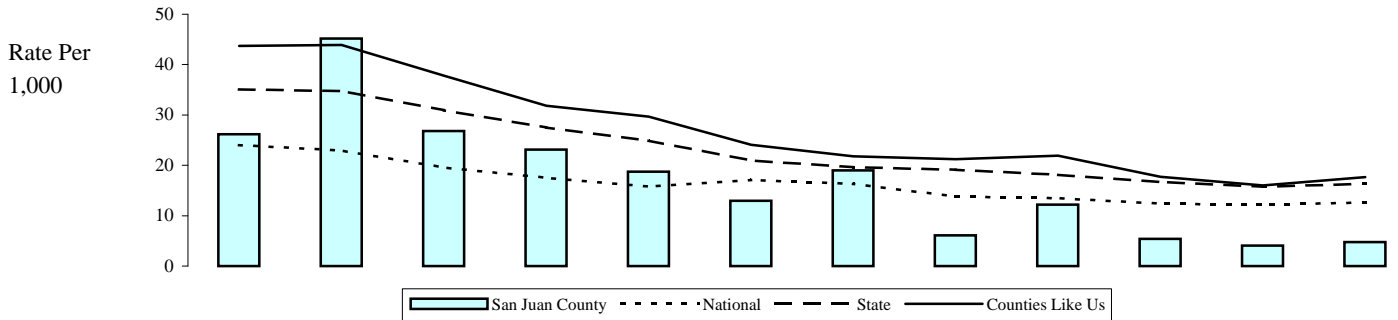
**State Source:** Washington Association of Sheriffs and Police Chiefs, Uniform Crime Report (UCR), Tables 40 and 50. Population Estimates: Washington State Department of Health

**National Source:** US Department of Justice, Bureau of Justice Statistics Sourcebook of Criminal Justice Statistics Online

Updated  
10/21/2008

Problem Outcomes: Criminal Justice

Arrests (Age 10-17), Property Crime



|                   | 1996  | 1997  | 1998  | 1999  | 2000  | 2001  | 2002  | 2003  | 2004  | 2005  | 2006  | 2007  |
|-------------------|-------|-------|-------|-------|-------|-------|-------|-------|-------|-------|-------|-------|
| National          | 24.04 | 22.91 | 19.57 | 17.52 | 15.75 | 17.10 | 16.32 | 13.80 | 13.45 | 12.40 | 12.12 | 12.67 |
| State             | 35.06 | 34.74 | 30.91 | 27.49 | 24.93 | 20.95 | 19.66 | 19.12 | 18.12 | 16.69 | 15.74 | 16.33 |
| Counties Like Us  | 43.71 | 43.90 | 37.81 | 31.82 | 29.66 | 24.06 | 21.76 | 21.20 | 21.90 | 17.72 | 15.99 | 17.64 |
| San Juan County   | 26.19 | 45.18 | 26.81 | 23.11 | 18.72 | 12.98 | 19.01 | 6.11  | 12.19 | 5.37  | 4.04  | 4.75  |
| Arrests, 10-17    | 33    | 59    | 36    | 33    | 27    | 19    | 28    | 9     | 18    | 8     | 6     | 7     |
| Adjst'd Pop 10-17 | 1,260 | 1,306 | 1,343 | 1,428 | 1,442 | 1,464 | 1,473 | 1,473 | 1,477 | 1,491 | 1,484 | 1,475 |

**Note:** The rate is the annual number of arrests of adolescents (age 10-17) for property crimes, per 1,000 adolescents (age 10-17). Property crimes include all crimes involving burglary, larceny-theft, motor vehicle theft, and arson. Data may differ from our last report because of refinements to our population adjustment process. Denominators are adjusted by subtracting the population of police agencies that did not report arrests to UCR. In spite of this population adjustment, when the non-reporting police jurisdiction is where much of the crime occurs, the rate for the county will be lower than it would be if that jurisdiction was included. For percent subtracted, suppression code definitions and the agencies not reporting, see the Technical Notes and the appendix on Non-Reporting Agencies and Population.

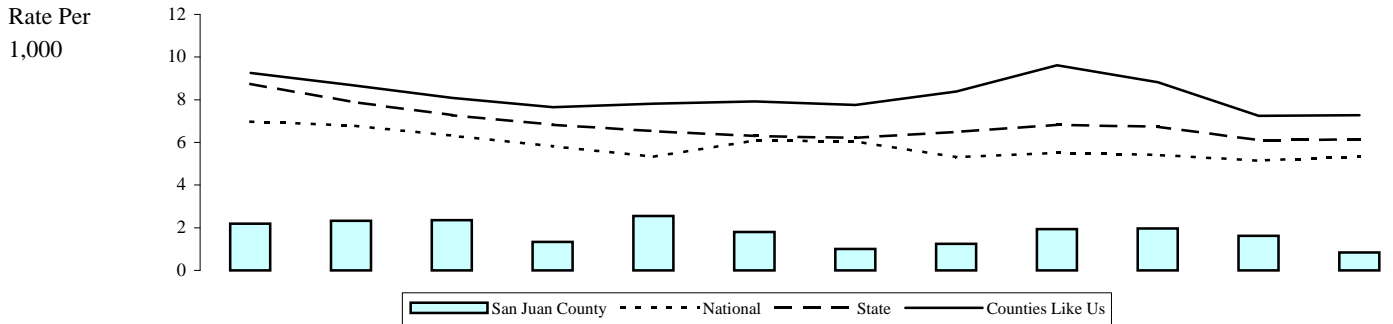
**State Source:** Washington Association of Sheriffs and Police Chiefs, Uniform Crime Report (UCR), Tables 40 and 50. Population Estimates: Washington State Department of Health

**National Source:** US Department of Justice, Bureau of Justice Statistics Sourcebook of Criminal Justice Statistics Online

Updated  
10/21/2008

Problem Outcomes: Criminal Justice

Arrests (Age 18+), Property Crime



|                  | 1996   | 1997   | 1998   | 1999   | 2000   | 2001   | 2002   | 2003   | 2004   | 2005   | 2006   | 2007   |
|------------------|--------|--------|--------|--------|--------|--------|--------|--------|--------|--------|--------|--------|
| National         | 6.97   | 6.80   | 6.31   | 5.82   | 5.32   | 6.09   | 6.04   | 5.31   | 5.50   | 5.41   | 5.14   | 5.34   |
| State            | 8.74   | 7.90   | 7.27   | 6.82   | 6.52   | 6.30   | 6.21   | 6.50   | 6.82   | 6.73   | 6.10   | 6.13   |
| Counties Like Us | 9.25   | 8.69   | 8.09   | 7.65   | 7.81   | 7.92   | 7.76   | 8.38   | 9.62   | 8.82   | 7.25   | 7.27   |
| San Juan County  | 2.19   | 2.33   | 2.36   | 1.33   | 2.55   | 1.80   | 1.01   | 1.24   | 1.94   | 1.96   | 1.62   | 0.84   |
| Arrests, 18+     | 22     | 24     | 25     | 15     | 29     | 21     | 12     | 15     | 24     | 25     | 21     | 11     |
| Adjst'd Pop 18+  | 10,030 | 10,303 | 10,609 | 11,278 | 11,381 | 11,681 | 11,887 | 12,097 | 12,388 | 12,757 | 12,956 | 13,157 |

**Note:** The rate is the annual number of arrests of adults (age 18+) for property crimes, per 1,000 adults (age 18+). Property crimes include all crimes involving burglary, larceny-theft, motor vehicle theft, and arson. Data may differ from our last report because of refinements to our population adjustment process. Denominators are adjusted by subtracting the population of police agencies that did not report arrests to UCR. In spite of this population adjustment, when the non-reporting police jurisdiction is where much of the crime occurs, the rate for the county will be lower than it would be if that jurisdiction was included. For percent subtracted, suppression code definitions and the agencies not reporting, see the Technical Notes and the appendix on Non-Reporting Agencies and Population.

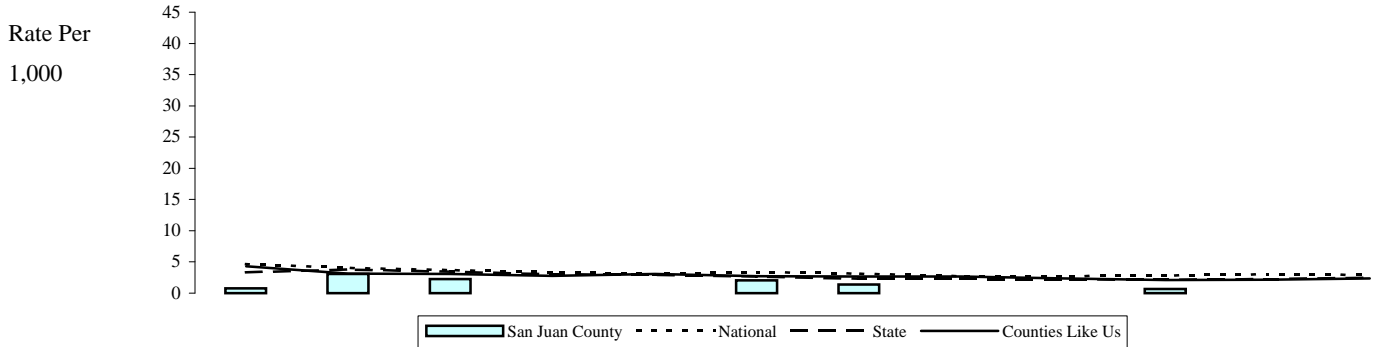
**State Source:** Washington Association of Sheriffs and Police Chiefs, Uniform Crime Report (UCR), Tables 40 and 50. Population Estimates: Washington State Department of Health

**National Source:** US Department of Justice, Bureau of Justice Statistics Sourcebook of Criminal Justice Statistics Online

Updated  
10/21/2008

Problem Outcomes: Criminal Justice

Arrests (Age 10-17), Violent Crime



|                   | 1996  | 1997  | 1998  | 1999  | 2000  | 2001  | 2002  | 2003  | 2004  | 2005  | 2006  | 2007  |
|-------------------|-------|-------|-------|-------|-------|-------|-------|-------|-------|-------|-------|-------|
| National          | 4.67  | 4.07  | 3.69  | 3.39  | 3.02  | 3.37  | 3.12  | 2.73  | 2.72  | 2.81  | 3.01  | 2.92  |
| State             | 3.35  | 3.78  | 3.43  | 3.04  | 2.93  | 2.68  | 2.32  | 2.33  | 2.22  | 2.16  | 2.26  | 2.47  |
| Counties Like Us  | 4.30  | 3.14  | 3.08  | 2.78  | 3.09  | 2.74  | 2.65  | 2.66  | 2.37  | 2.08  | 2.14  | 2.36  |
| San Juan County   | 0.79  | 3.06  | 2.23  | 0.00  | 0.00  | 2.05  | 1.36  | 0.00  | 0.00  | 0.67  | 0.00  | 0.00  |
| Arrests, 10-17    | 1     | 4     | 3     | 0     | 0     | 3     | 2     | 0     | 0     | 1     | 0     | 0     |
| Adjst'd Pop 10-17 | 1,260 | 1,306 | 1,343 | 1,428 | 1,442 | 1,464 | 1,473 | 1,473 | 1,477 | 1,491 | 1,484 | 1,475 |

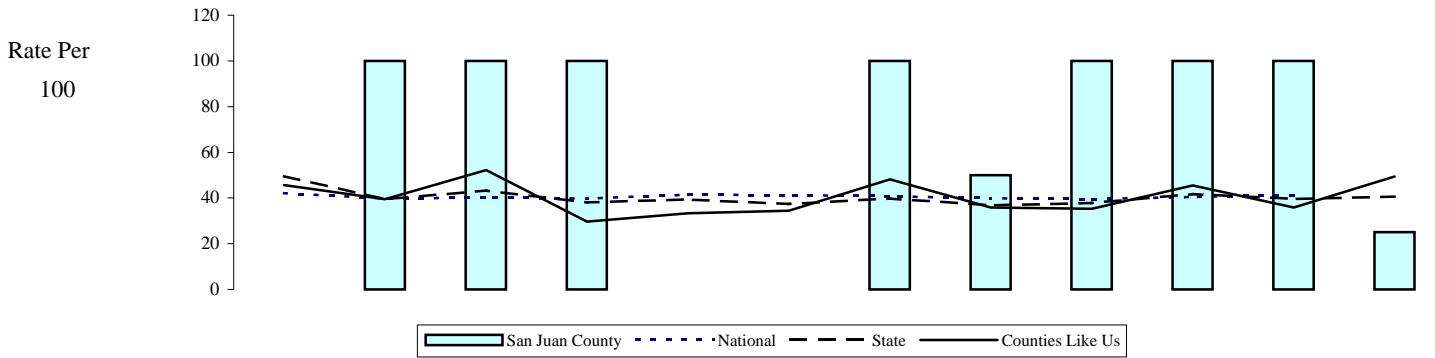
**Note:** The rates are the annual number of arrests of adolescents (age 10-17) for violent crime per 1,000 adolescents (age 10-17). Violent crimes include all crimes involving criminal homicide, forcible rape, robbery, and aggravated assault. Simple assault is not defined as a violent crime. Data may differ from our last report because of refinements to our population adjustment process. Denominators are adjusted by subtracting the population of police agencies that did not report arrests to UCR. In spite of this population adjustment, when the non-reporting police jurisdiction is where much of the crime occurs, the rate for the county will be lower than it would be if that jurisdiction was included. For percent subtracted, suppression code definitions and the agencies not reporting, see the Technical Notes and the appendix on Non-Reporting Agencies and Population.

**State Source:** Washington Association of Sheriffs and Police Chiefs, Uniform Crime Report (UCR), Tables 40 and 50. Population Estimates: Washington State Department of Health

**National Source:** US Department of Justice, Bureau of Justice Statistics Sourcebook of Criminal Justice Statistics Online

Updated  
10/21/2008

### Alcohol-Related Traffic Fatalities Per All Traffic Fatalities



|                  | 1996  | 1997   | 1998   | 1999   | 2000  | 2001  | 2002   | 2003  | 2004   | 2005   | 2006   | 2007  |
|------------------|-------|--------|--------|--------|-------|-------|--------|-------|--------|--------|--------|-------|
| National         | 42.19 | 39.78  | 40.17  | 39.72  | 41.44 | 41.24 | 40.75  | 39.89 | 39.50  | 40.43  | 41.28  |       |
| State            | 49.58 | 39.47  | 43.20  | 38.15  | 39.30 | 37.44 | 39.82  | 36.83 | 37.74  | 41.76  | 39.65  | 40.63 |
| Counties Like Us | 45.63 | 39.45  | 52.22  | 29.67  | 33.33 | 34.38 | 48.11  | 35.85 | 35.35  | 45.45  | 35.90  | 49.48 |
| San Juan County  | 0.00  | 100.00 | 100.00 | 100.00 | NR    | NR    | 100.00 | 50.00 | 100.00 | 100.00 | 100.00 | 25.00 |
| Alcohol-related  | 0     | 2      | 2      | 1      | 0     | 0     | 1      | 2     | 1      | 1      | 2      | 1     |
| Fatalities       | 1     | 2      | 2      | 1      | 0     | 0     | 1      | 4     | 1      | 1      | 2      | 4     |

**Note:** The rates are the annual number of alcohol-related traffic fatalities, per 100 traffic fatalities. "Alcohol-related" means that the officer on the scene determined that at least one driver involved in the accident "had been drinking." Thus, "Alcohol-related" includes but is not limited to the legal definition of driving under the influence. Care should be taken since small numbers of events can cause unreliable rates in some counties.

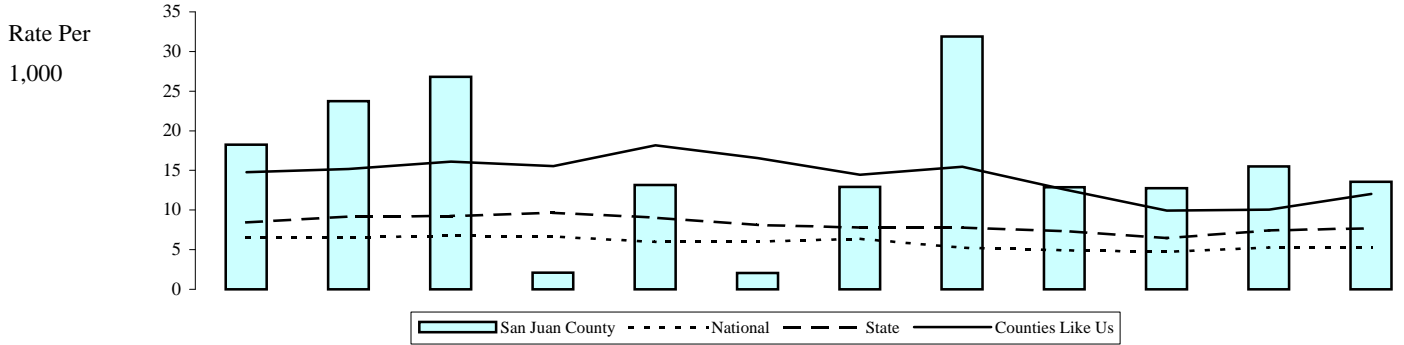
**State Source:** Washington State Patrol, Records Section, Traffic Collisions in Washington State, Accident Records Database

**National Source:** National Center for Statistics and Analysis, Fatal Accident Reporting System (FARS)

Updated  
12/1/2008

Problem Outcomes: Substance Use

Arrests (Age 10-17), Alcohol Violation



|                   | 1996  | 1997  | 1998  | 1999  | 2000  | 2001  | 2002  | 2003  | 2004  | 2005  | 2006  | 2007  |
|-------------------|-------|-------|-------|-------|-------|-------|-------|-------|-------|-------|-------|-------|
| National          | 6.58  | 6.53  | 6.73  | 6.66  | 5.98  | 6.02  | 6.38  | 5.25  | 4.94  | 4.72  | 5.27  | 5.31  |
| State             | 8.45  | 9.15  | 9.24  | 9.66  | 9.03  | 8.13  | 7.80  | 7.81  | 7.36  | 6.46  | 7.44  | 7.70  |
| Counties Like Us  | 14.77 | 15.17 | 16.09 | 15.56 | 18.17 | 16.55 | 14.47 | 15.47 | 12.60 | 9.95  | 10.05 | 12.04 |
| San Juan County   | 18.25 | 23.74 | 26.81 | 2.10  | 13.18 | 2.05  | 12.90 | 31.91 | 12.86 | 12.74 | 15.50 | 13.56 |
| Arrests, 10-17    | 23    | 31    | 36    | 3     | 19    | 3     | 19    | 47    | 19    | 19    | 23    | 20    |
| Adjst'd Pop 10-17 | 1,260 | 1,306 | 1,343 | 1,428 | 1,442 | 1,464 | 1,473 | 1,473 | 1,477 | 1,491 | 1,484 | 1,475 |

**Note:** The rates are the annual number of arrests of adolescents (age 10-17) for alcohol violations, per 1,000 adolescents (age 10-17). Alcohol violations include all crimes involving driving under the influence, liquor law violations, and drunkenness. For children, arrests for liquor law violations are usually arrests for minor in possession.

1) Data may differ from our last report because of refinements to our population adjustment process. Denominators are adjusted by subtracting the population of police agencies that did not report arrests to UCR. In spite of this population adjustment, when the non-reporting police jurisdiction is where much of the crime occurs, the rate for the county will be lower than it would be if that jurisdiction was included. For percent subtracted, suppression code definitions and the agencies not reporting, see the Technical Notes and the appendix on Non-Reporting Agencies and Population.

2) The DUI portion of this measure is likely understated, because arrests made by the State Patrol (approximately 40% of DUI arrests) are not attributable to counties. State Patrol arrests are included in the state rates.

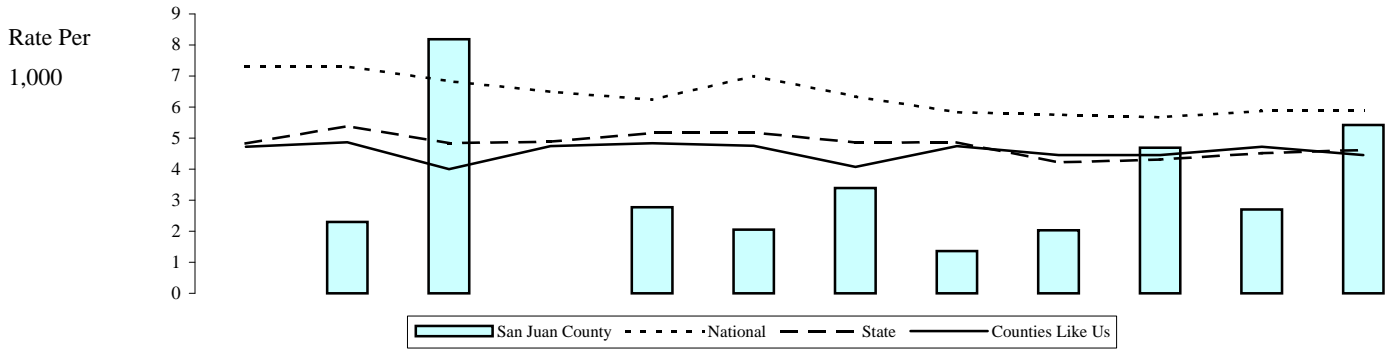
**State Source:** Washington Association of Sheriffs and Police Chiefs, Uniform Crime Report (UCR), Tables 40 and 50. Population Estimates: Washington State Department of Health

**National Source:** US Department of Justice, Bureau of Justice Statistics Sourcebook of Criminal Justice Statistics Online

Updated  
10/21/2008

Problem Outcomes: Substance Use

Arrests (Age 10-17), Drug Law Violation



|                   | 1996  | 1997  | 1998  | 1999  | 2000  | 2001  | 2002  | 2003  | 2004  | 2005  | 2006  | 2007  |
|-------------------|-------|-------|-------|-------|-------|-------|-------|-------|-------|-------|-------|-------|
| National          | 7.32  | 7.31  | 6.84  | 6.49  | 6.24  | 7.00  | 6.34  | 5.84  | 5.75  | 5.67  | 5.88  | 5.89  |
| State             | 4.82  | 5.39  | 4.83  | 4.89  | 5.16  | 5.19  | 4.86  | 4.87  | 4.22  | 4.31  | 4.52  | 4.62  |
| Counties Like Us  | 4.72  | 4.87  | 4.00  | 4.74  | 4.83  | 4.75  | 4.07  | 4.74  | 4.45  | 4.45  | 4.72  | 4.45  |
| San Juan County   | 0.00  | 2.30  | 8.19  | 0.00  | 2.77  | 2.05  | 3.39  | 1.36  | 2.03  | 4.69  | 2.70  | 5.42  |
| Arrests, 10-17    | 0     | 3     | 11    | 0     | 4     | 3     | 5     | 2     | 3     | 7     | 4     | 8     |
| Adjst'd Pop 10-17 | 1,260 | 1,306 | 1,343 | 1,428 | 1,442 | 1,464 | 1,473 | 1,473 | 1,477 | 1,491 | 1,484 | 1,475 |

**Note:** The rates are the annual number of arrests of adolescents (age 10-17) for drug law violations, per 1,000 adolescents (age 10-17). Drug law violations include all crimes involving sale, manufacturing, and possession of drugs.

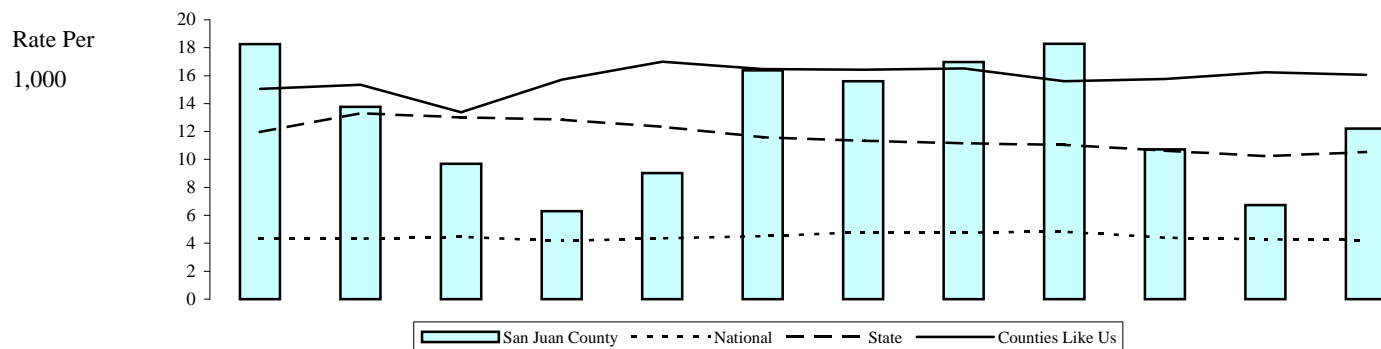
Data may differ from our last report because of refinements to our population adjustment process. Denominators are adjusted by subtracting the population of police agencies that did not report arrests to UCR. In spite of this population adjustment, when the non-reporting police jurisdiction is where much of the crime occurs, the rate for the county will be lower than it would be if that jurisdiction was included. For percent subtracted, suppression code definitions and the agencies not reporting, see the Technical Notes and the appendix on Non-Reporting Agencies and Population.

**State Source:** Washington Association of Sheriffs and Police Chiefs, Uniform Crime Report (UCR), Tables 40 and 50. Population Estimates: Washington State Department of Health

**National Source:** US Department of Justice, Bureau of Justice Statistics Sourcebook of Criminal Justice Statistics Online

Updated  
10/21/2008

### Clients of State-Funded Alcohol or Drug Services (Age 10-17)



|                  | 1996  | 1997  | 1998  | 1999  | 2000  | 2001  | 2002  | 2003  | 2004  | 2005  | 2006  | 2007  |
|------------------|-------|-------|-------|-------|-------|-------|-------|-------|-------|-------|-------|-------|
| National         | 4.31  | 4.33  | 4.46  | 4.18  | 4.35  | 4.51  | 4.79  | 4.77  | 4.83  | 4.39  | 4.29  | 4.22  |
| State            | 11.97 | 13.32 | 13.01 | 12.85 | 12.34 | 11.59 | 11.35 | 11.16 | 11.05 | 10.63 | 10.24 | 10.54 |
| Counties Like Us | 15.05 | 15.35 | 13.38 | 15.72 | 17.00 | 16.48 | 16.42 | 16.52 | 15.59 | 15.77 | 16.24 | 16.06 |
| San Juan County  | 18.25 | 13.78 | 9.68  | 6.30  | 9.02  | 16.39 | 15.61 | 16.97 | 18.28 | 10.73 | 6.74  | 12.20 |
| Admits, 10-17    | 23    | 18    | 13    | 9     | 13    | 24    | 23    | 25    | 27    | 16    | 10    | 18    |
| Persons, 10-17   | 1,260 | 1,306 | 1,343 | 1,428 | 1,442 | 1,464 | 1,473 | 1,473 | 1,477 | 1,491 | 1,484 | 1,475 |

**Note:** The rates are the annual number of adolescents (age 10-17) receiving state-funded alcohol or drug services, per 1,000 adolescents 10-17. Counts of clients are unduplicated so that those receiving services more than once during the year are only counted once for that year. State-funded services include treatment, assessment, and detox. Persons in Department of Corrections treatment programs are not included. Updates have been done and result in some changes to 2000 data.

**State Source:** Department of Social and Health Services, Division of Alcohol and Substance Abuse, Treatment and Assessment Report Generation Tool (TARGET). Population Estimates: Washington State Department of Health

**National Source:** Office of Applied Studies, Substance Abuse and Mental Health Services Administration, Treatment Episode Data Set (TEDS)

Updated  
9/23/2008

**Topics:****Counting Alcohol- or Drug-related Deaths****Uniform Crime Report - Non-Reporting Police Jurisdictions****Suppression Codes****CORE-GIS Conversion Process and Weighted Reliability Index****Counties Like Us****Duplicated and Unduplicated Counts****Rates – Why is Raw Data Converted to Rates?**

AOD deaths are identified by matching all the contributory causes of death from death certificate records to a list of causes that are considered AOD-related. The deaths identified as AOD-related then may be summed to provide area totals. Dividing the total AOD-related deaths by all deaths in an area gives the percent of all deaths that are alcohol and drug related. Lists of underlying causes of death that are AOD-related have been developed in several studies. Citations for these studies are listed prior to the AOD attribution tables. AOD-related deaths used in this report are determined using a comprehensive assembly of disease, accident, and injury codes identified in those studies. The codes are based upon the International Classification of Diseases, Ninth Revision (ICD-9) from 1990 to 1998 or International Classification of Diseases, Tenth Revision (ICD-10) after 1998.

The identified AOD-related causes of death may be either fully attributable or sometimes attributable to alcohol or drugs. Some contributory causes of death are explicit in their mention of alcohol or drugs. Examples include alcoholic cirrhosis of the liver (ICD-9 code 571.2), alcohol and drug dependence syndromes (ICD-9 codes 303 and 304, respectively), and drug poisonings (ICD-9 codes E850 through E859). All deaths of this sort are fully, or 100%, attributable to alcohol or drug abuse and are considered direct AOD-related deaths.

Other contributory causes of death are related only sometimes to alcohol or drugs. For example, epidemiological studies have shown that, among persons over 35 years of age, 60% of deaths due to chronic pancreatitis (ICD-9 code 577.1) and 75% of malignant neoplasms of the esophagus (ICD-9 code 150) are alcohol-related. For persons of all ages, 42% of motor vehicle traffic and nontraffic deaths (ICD-9 codes E810 through E825) are alcohol-related. The appropriate percentage of such indirectly attributable deaths are also counted toward totals for AOD-related deaths.

The tables on the following pages characterize the different diseases, injuries, and accidents by: name, ICD-9 or ICD-10 code, percent attributable to alcohol or drugs, age of inclusion. Information sources are listed below.

1. Schultz J, Rice D, & Parker D. 1990. Alcohol-related mortality and years of potential life lost - United States, 1987. *Morbidity and Mortality Weekly Report*, 39, 173-178.
2. Rice D, et al. 1990. The Economic Costs of Alcohol and Drug Abuse and Mental Illness: 1985. Report submitted to the Office of Financing and Coverage Policy of the Alcohol, Drug Abuse, and mental health Administration, U.S. Department of Health and Human Services. San Francisco, CA: Institute for Health and Aging, University of California.
3. Fox K, Merrill J, Chang H, & Califano J. 1995. Estimating the Costs of Substance Abuse to the Medicaid Hospital Care Program. *American Journal of Public Health*, 85(1), 48-54.
4. Seattle-King County HIV/AIDS Epidemiology Unit and Washington State Office of HIV/AIDS Epidemiology and Evaluation. 1994. Washington State/Seattle-King County HIV/AIDS Epidemiology Report (2nd Quarter, 1994), p. 4.

| Disease Category  | ICD-10 Code  | ICD-9 Code                       | Attrib          | Age  |
|---|--|----------------------------------|-----------------|------|
| <b>Diseases Directly Attributable to Alcohol</b>                            |  |                                  |                 |      |
| Alcoholic psychoses   | F10, F10.3-F10.9   | 291                              | 100%            | >=15 |
| Alcohol dependence syndrome   | F10.2  | 303                              | 100%            | >=15 |
| Alcoholic polyneuropathy  | G62.1  | 357.5                            | 100%            | >=15 |
| Alcoholic cardiomyopathy  | I42.6  | 425.5                            | 100%            | >=15 |
| Alcoholic gastritis   | K29.2  | 535.3                            | 100%            | >=15 |
| Alcoholic fatty liver   | K70.0  | 571.0                            | 100%            | >=15 |
| Acute alcoholic hepatitis   | K70.1, K70.4   | 571.1                            | 100%            | >=15 |
| Alcoholic cirrhosis of the liver  | K70.3  | 571.2                            | 100%            | >=15 |
| Alcoholic liver damage, other   | K70.2, K70.9, K70  | 571.3                            | 100%            | >=15 |
| Excessive blood level of alcohol, toxic effect of alcohol                   | R78.0, T51   | 790.3. 980                       | 100%            | >=0  |
| Accidental poisoning by alcohol   | X45, Y15   | E860                             | 100%            | >=0  |
| Nondependent abuse of Alcohol   | F10.1  | 305.0                            | 100%            | >=0  |
| Alcohol-induced pseudo-Cushing's syndrome                                   | E24.4  | Not Available in ICD-9           | 100%            | >=15 |
| Degeneration of nervous system due to alcohol                               | G31.2  | Not Available in ICD-9           | 100%            | >=15 |
| Alcoholic myopathy  | G72.1  | Not Available in ICD-9           | 100%            | >=15 |
| Maternal care for (suspected) damage to fetus due to alcohol                | O35.4  | Not Available in ICD-9           | 100%            | >=15 |
| Newborn affected by maternal use of alcohol                                 | P04.3  | Not Available in ICD-9           | 100%            | >=0  |
| Fetal alcohol syndrome (dysmorphic features)                                | Q86.0  | Not Available in ICD-9           | 100%            | >=0  |
| Suicide attributable to alcohol   | X65  | Not Available in ICD-9           | 100%            | >=0  |
| Alcoholic Pellagra  | E52  | 265.2                            | 100%            | >=0  |
| <b>Diseases Indirectly Attributable to Alcohol</b>                          |  |                                  |                 |      |
| <b>Neoplasms</b>  |  |                                  |                 |      |
| Breast  | C50, D05   | 174.0-174.9, 233.0               | 13% F           | >=35 |
| Esophagus   | C15, D00.1   | 150.1-150.9, 230.1               | 75%             | >=35 |
| Larynx  | C32, D02.0   | 161.0-161.9, 231.0               | 50% M,<br>40% F | >=35 |
| Lip, oral cavity, pharynx   | C00-C14, D00.0   | 140.1-141.9, 143.0-149.9, 230.0  | 50% M,<br>40% F | >=35 |
| Liver   | C22, D01.5   | 155.0-155.2, 230.8               | 29%             | >=35 |
| <b>Cardiovascular</b>   |  |                                  |                 |      |
| Cardiomyopathy  | I42.0 - I42.2, I42.5, I42.7- I42.9   | 425.1, 425.4, 425.9              | 40%M            | >=35 |
| Hypertension  | I10-113, O10-O14, O16  | 401.0-404.9, 642.0, 642.2, 642.9 | 11%             | >=35 |
| <b>Digestive System</b>   |  |                                  |                 |      |
| Cirrhosis   | K71.7, K74.5-K74.6   | 571.5                            | 74%             | >=35 |
| Duodenal Ulcers   | K26  | 532.0-532.9                      | 10%             | >=35 |
| Pancreatitis, acute   | K85  | 577.0                            | 47%             | >=35 |
| Pancreatitis, chronic   | K86.1- K86.3, K86.9  | 577.1, 577.2, 577.9              | 72%             | >=35 |
| <b>Other Diseases or Conditions</b>   |  |                                  |                 |      |
| Epilepsy  | G40.3,G40.4,G40.6,G40.9  | 345.1, 345.3, 345.9              | 30%             | >=15 |
| Seizures  | R56  | 780.3                            | 41%             | >=15 |
| Tuberculosis  | A16-A19  | 011-013, 017, 018                | 25%             | >=15 |
| Accident or Injury Causes : Motor vehicle traffic and non-traffic accidents | V02-V04, V09.0, V09.2, V12-V14, V19.0-V19.2, V19.4-V19.6, V20-V79, V80.3- V80.5, V81.0-V81.1, V82.0-V82.1, V83-V86, V87.0-V87.8, V88.0-V88.8, V89.0, V89.2 | E810-E825                        | 42%             | >=0  |

| Disease Category  | ICD-10 Code  | ICD-9 Code                               | Attrib | Age  |
|---|--|--|--------|------|
| Pedal cycle and other road vehicle accidents  | V01, V05-V06, V09.1, V09.3-V09.9, V10-V11, V15-V18, V19.3, V19.8-V19.9, V80.0-V80.2, V80.6-V80.9, V82.2-V82.9, V87.9, V88.9, V89.1, V89.3, V89.9 | E826-E829                                | 20%    | >=0  |
| Water transport accidents   | V90-V94  | E830-E838                                | 20%    | >=0  |
| Air & space transport accidents   | V95-V97  | E840-E845                                | 16%    | >=0  |
| Accidental falls  | W00-W19  | E880-E888                                | 35%    | >=15 |
| Accidents caused by fire  | X00-X09  | E890-E899                                | 45%    | >=0  |
| Accidental drowning and submersion  | W65-W74  | E910                                     | 38%    | >=0  |
| Suicides due to alcohol or drugs are now considered direct AOD-related deaths, other suicides are not apportioned. This brings our        |  |  |        |      |
| Homicide & other purposely inflicted injury   | X86-Y09, Y87.1   | E960-E962, E962.1-E969                   | 46%    | >=15 |
| Other   | X31, W79, W50-W52, W20- W34, Y15-Y19   | E901, E911, E917-E920, E922              | 25%    | >=15 |
| Other category includes: Excessive cold, Choking on food in airway; Striking against or struck accidentally by objects or persons; Caught |  |  |        |      |
| <b>Diseases Directly Attributable to Drugs</b>  |  |  |        |      |
| Drug psychoses  | F11-F16, F18-F19   | 292                                      | 100%   | >=0  |
| Drug dependence syndrome  | F11-F16, F18-F19   | 304                                      | 100%   | >=0  |
| Polyneuropathy due to drugs   | G62.0  | 357.6                                    | 100%   | >=15 |
| Drug dependence during pregnancy  | F11-F16, F18-F19   | 648.3                                    | 100%   | >=0  |
| Suspected damage to fetus from drugs  | O35.5,   | 655.5                                    | 100%   | >=0  |
| Noxious influences affecting fetus  | P04.4  | 760.7                                    | 100%   | >=0  |
| Drug reactions, intox., withdrawal specific to newborn  | P96.1  | 779.4, 779.5                             | 100%   | >=0  |
| Selected drug poisonings  | R78,R78.1-R78.6, T38 ; excludes Y40-59.9 (therapeutic use)   | 962, 965, 967-971, 977 excludes E930-949 | 100%   | >=0  |
| Selected accidental drug poisonings   | X40-X44  | E850-E858                                | 100%   | >=0  |
| Accidental Poisonings (magic mushrooms, huffing and other drug use)   | X46-X49  | E861-E869                                | 100%   | >=0  |
| Nondependent abuse of drugs   | F11-F16, F18-F19   | 305.2-305.9                              | 100%   | >=0  |
| Assault by poisoning using drugs and medicaments  | x85  | E962.0                                   | 100%   | >=0  |
| Drug induced myopathy   | G72.0  | Not Available in ICD-9                   | 100%   |      |
| Poisoning by drugs, accidentally or purposely inflicted   | Y10-Y14  | E980.0-E980.5                            | 100%   | >=0  |
| Suicides attributable to drugs  | x60-64   | E950.0-E950.5                            | 100%   | >=0  |
| <b>Diseases Indirectly Attributable to Drugs</b>  |  |  |        |      |
| AIDS (from IV drug use exposure)  | B20-B24  | 042.0-044.9                              | 5%     | >=15 |
| Cardiovascular  |  |  |        |      |
| Endocarditis  | I33.0, I33.9   | 421.0, 421.9                             | 75%    | >=15 |
| Other   |  |  |        |      |
| Hepatitis A   | B15.9  | 70.1                                     | 12%    | >=15 |
| Hepatitis B   | B16-B16.9  | 70.2, 70.3                               | 36%    | >=15 |
| Hepatitis C   | B17-B19.9  | 70.5, 70.9                               | 10%    | >=15 |

## Uniform Crime Report - Non-Reporting Police Jurisdictions

Most law enforcement agencies report arrest and offence data to the Washington Association of Sheriffs and Police Chiefs (WASPC), which in turn provides data to the FBI's Uniform Crime Reporting Program. This is the source of our data. Some jurisdictions do not report all arrests and offences, some report partial years, and some withhold certain categories of arrests or offences. Reporting is voluntary for arrests and offences. Offences are more likely to be reported since some funding is associated with reporting. Offences are incidence reporting. When more than one victim is involved an offence is filed for each victim. Multiple property violations performed at the same incident are counted as one offence.

However when both types of events happen, only the victim incidents are reported as offences. Offences focus on the nature of the crime, while arrests focus on the apprehended accused perpetrator. Many offences occur without arresting perpetrators. Sometimes charges are dropped and sometimes no perpetrator is ever found. No perpetrator age can be assigned to offence data so the entire age range of population is used as the denominator. Some data is reported to UCR in a new system which is not yet compatible with UCR output reports and UCR cannot extract that data for this report but does include it in their reports to the FBI. We list those jurisdictions as non-reporting although UCR considers them to have reported. Only part one offences are reported in the Uniform Crime Report, some agencies have no part one crimes to report. Those agencies are listed with zero events, not as non-reporting.

Information on the Non-reporting Population and Non-reporting Agencies are available only in the individual county and locale level reports. Each area report shows how and when that area's police jurisdictions reported data to the Washington Association of Sheriff's and Police Chiefs. If your area is one with jurisdictions having a significant amount of incomplete data, be very careful that you adjust your risk assessment to reflect this. In other words, the reported arrest rates may not adequately reflect the entire area. This will be true especially in those cases where the non-reporting police jurisdictions have either very high or very low arrest rates, compared to the rest of the area.

In order to compensate for missing police reports, we have adjusted the denominator in the rate calculation so that it reflects only the proportion of the area for which we do have data. For instance, say area A, with a population of 40,000, has eight police districts. Now, if one of the police districts in the area did not report their arrests, the number of arrests would not be representative of the whole area. Therefore, we would not want to use the population of the whole area in the denominator because that would make the rate lower than it should be. The solution used in this report is to subtract the population of that missing police district from the area population. We follow the same procedure for police districts that report partial years: if they report only six months, we use only half of the population to calculate the rate. In 2004 we have made adjustments to the process which calculates non-reporting at the County Like Us and State levels. This has resulted in greater accuracy, but different rates than were previously reported in some counties and for some years.

Due to the uneven geographic distribution of crime, missing police data can cause spikes or dips in the trend data comparison of multiple consecutive years. We do not run into this problem in the state report because the county rates there (as opposed to the individual county reports) only report 5-year averages. However for individual county reports and reports for smaller areas like locales or districts the trend data can become unstable due to non-reporting. Alternately, the conversion of data from certain police jurisdictions to other areas like locales may not apportion directly causing too much of the data to be apportioned based on population rather than clearly assigned to one area. We use a weighted reliability index (WRI) to determine when the conversion is no longer reliable. An explanation of that process follows. We have tried to compensate for these and other issues by suppressing data which is likely to be affected.

## Suppression Codes for Yearly Trend Data

**UN=Unreliable conversion** of events to report geography, failure of **weighted reliability index** (WRI). The WRI evaluation process is further explained in the section labeled 'CORE-GIS Conversion Process and Weighted Reliability Index'.

**SP=Suppressed** by agreement with data provider when denominator is below agreed level and may compromise a person's rights to confidentiality.

**SN=Small Number Sample.** Geography has less than 30 events in the denominator. More reliable at 5 year level or for larger area.

**NR=Not reliable** due to non-reporting of police jurisdictions data. Fifty percent or more of the population is not represented by the data due to non-reporting jurisdictions.

## CORE-GIS Conversion Process and Weighted Reliability Index

CORE-GIS obtains data from more than fifty government agency sources. The data are represented as events (e.g. # of teen births, # of crimes, # of clients) occurring within a given geographic unit. This geographic unit is generally the smallest that can be obtained from the agency source. For example, data may be available by school district, by zip code, by census tract or by police jurisdictions. CORE-GIS calls these geographic units the "source geography."

CORE-GIS data is usually reported at the geographic level of county or community – called in the rest of this report the "destination geography." Therefore, data usually needs to be converted from the "source geographies" to the "destination geography."

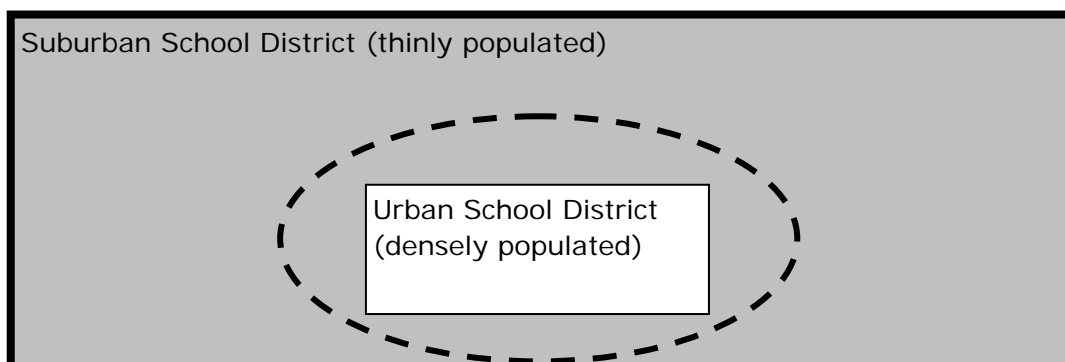
The conversion is based on an overlay process, in which the events occurring in small source geographies that are totally contained within the destination are combined with synthetic estimates of events occurring in source geographies that are partly within and partly outside the destination geography.

The synthetic estimation is weighted by the population distribution between the source and destination areas. Therefore, it requires a small-scale count of the population underlying both source and destination geographies. This process is explained below through examples.

Data being converted from a smaller geography (source geography) like school district to a larger geography (like a county) is usually fairly reliable because most of the smaller pieces fit neatly and wholly into the new geography. (See example 1).

The rectangles represent two possible data source geographies (one densely populated school district – Urban School District -- and one thinly populated school district – Suburban School District -- surrounding it). The large oval represents a report's destination geography such as county, locale or network.

### Example 1



The following statements refer to the first example:

All of the events occurring in the urban school district can be attributed entirely to the destination geography.

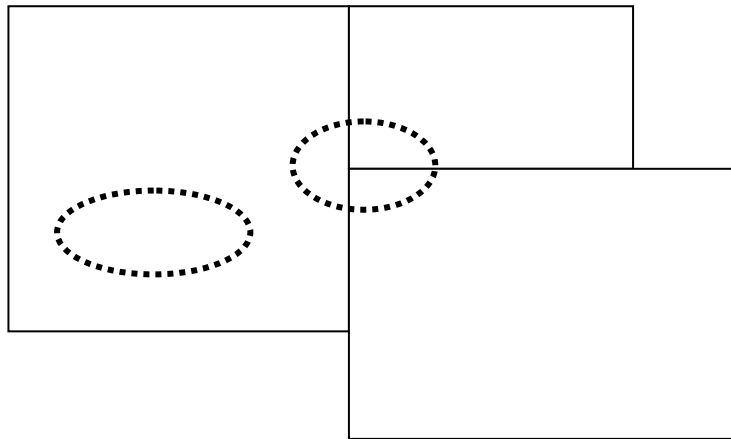
The events occurring in the split source geography (suburban school district, in this example) are distributed to the destination geography in the same proportion as the underlying population is distributed. If 40% of the suburban school district population lies within the destination geography, then 40% of its events are attributed to the destination geography.

These events are split by age, race and gender subgroups whenever possible, as are the populations. So the synthetic estimation is broken down that way also. If 40% of the young White population of the suburban school district lives in the destination geography, then 40% of the events occurring to young White people are attributed there. If, on the other hand, only 10% of the young American Indian population of the suburban school district lives in the destination geography, then only 10% of the events occurring to young American Indian people are attributed there.

While we can develop an algorithm to distribute all source geography populations to all destination geography populations, that distribution will not always be reliable.

For example, see the situation depicted in Example 2 below. Here we are trying to estimate the number of events contained in two very small destination geographies (the ovals). Could this synthetic estimate be reliable? Perhaps, if the small area within the ovals really is representative of the whole area -- but more likely not.

**Example 2**



A statistic is needed to assist researchers in determining when a destination geography's events cannot be reliably estimated using these processes. For CORE-GIS, that statistic is the Weighted Reliability Index (WRI).

The amount of overlap between source and destination populations can vary from less than 1% to 99% -- only a little of a source population can live in a destination, or almost all of the source population can live in a destination.

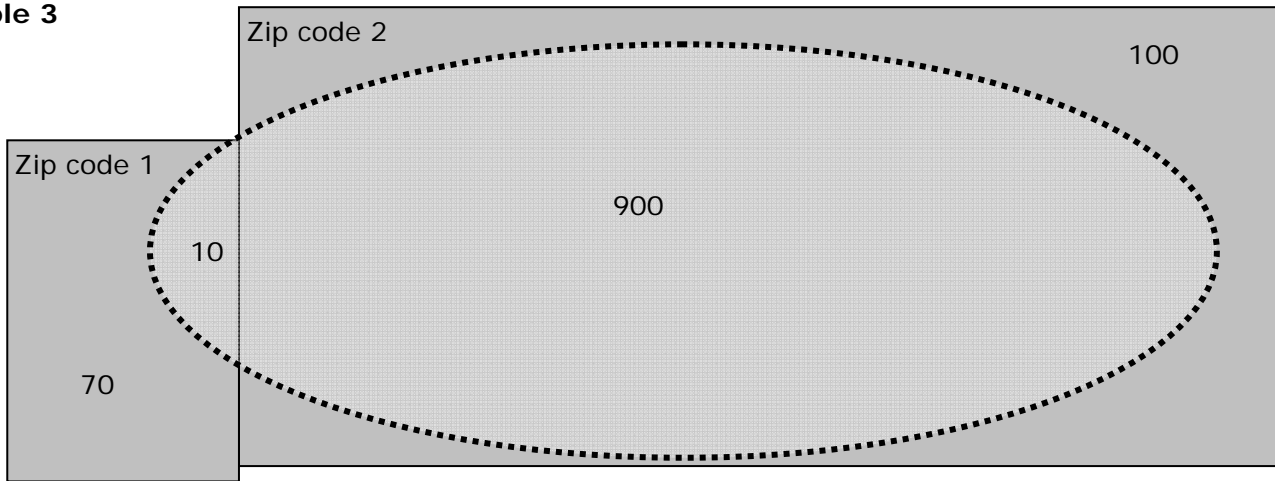
The key underlying assumption behind the CORE-GIS Weighted Reliability Index is as follows:

**When most of the population for the source geography is also in the destination geography, we can be more certain of the reliability of the estimation process.**

Therefore, the weighting process lets us calculate, for each source-geography/destination-geography combination, the reliability of each destination geography's estimate.

In the figure for Example 3, for zip code 2 the source area population is mostly in the destination oval (encased in the dashed line), but the majority population from the other contributing source area is not.

**Example 3**



The oval represents the destination geography boundary -- the edge of a destination city. The rectangles represent the source geography boundaries for two zip codes. The numbers are population of people living in each place: 10 people live both in Destination City and in the first source (Zip code 1), and 900 people live both in Destination City and in the second source (Zipcode2).

The formula for **Weighted Reliability Index** for a single destination is the total weighted destination population as a percent of total population. To understand this formula, see the calculations below.

|            | Percent of source population attributed to destination | Multiplied by the population attributed to the destination | Amount of destination population |
|------------|--|--|----------------------------------|
| zip code 1 | 10/80 = 12.5%  | * 10   | 1.25                             |
| zip code 2 | 900/1000 = 90%   | * 900  | 810.00                           |
|            | <b>Total for Destination</b>                           | <b>910</b>   | <b>811.25</b>                    |

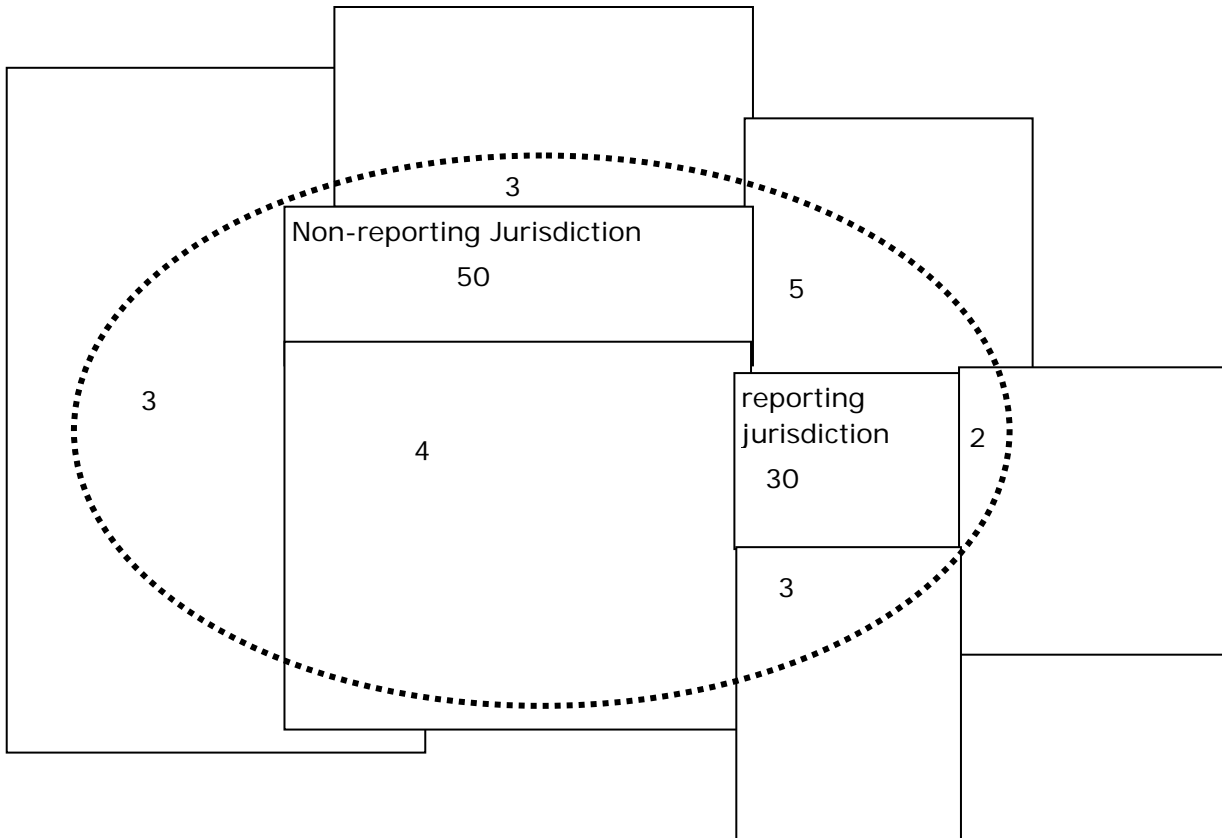
In the above example, the **Weighted Reliability Index** for Destination City is **811.25 / 910 = 89%**. **Basically, 89% of the event locations were directly attributed to the area they occurred.** Along with the WRI a cut point for reliable reporting is needed. When half or more of the events have been imputed to the destination geography, rather than directly attributed from the source geography, the data is considered unreliable and rates are suppressed.

**WRI for Areas with Non-Reporting of Data**

There is a second way that data may become unreliable. Some police jurisdictions do not report data to the state sources, use a reporting method which cannot be included in our files, fail to report for either adults or juveniles, or report for only part of a year. This is particularly true for court data – arrests or offenses. In order to accurately evaluate the reliability of data conversions for destination geographies containing those jurisdictions, non-reporting jurisdiction populations were excluded from the calculations for WRI and the non-reporting jurisdiction issue is evaluated separately.

Partial Reporting, part of a year or part of a population, is also taken into consideration when computing the percentage of non-reporting in a destination geography. Adult and juvenile rates are evaluated separately. Some areas may pass for one, but not for the other due to their reporting habits. For partial year reporting the percentage of the year with data reported is used to evaluate each category.

**Example 4**



The second test of reliability is to determine whether the population for the rate is adequately represented. In this example, allow the numbers inside the oval to represent a population of 100 allocated to the destination geography. Two source jurisdictions are entirely located in the destination geography represented by the oval. Their events when reported would be directly attributed. The non-reporting jurisdiction would have its population of 50 excluded from the calculation for WRI, while the reporting jurisdiction would have its population included in the calculation. In this case the completely contained reporting jurisdiction would represent 30 of the remaining 50 population (60%) in the destination oval. The imputed portion is 40% allowing the destination geography to pass the first test for WRI.

CORE-GIS also requires that the excluded non-reporting jurisdiction population (50 of 100) are less than 50% of the total population for the destination geography. With an exclusion rate of 50%, this destination geography would fail the reliability criteria.

The reliability of arrest rates is calculated each year based on non-reporting. For five year rates, three out of five data years must be considered reliable by both tests and the average of the yearly WRI for all five years must reach the WRI cut point value.

## Counties Like Us

Knowing that your county has a particular rate for one of the indicators does not help you evaluate the importance of that indicator to your risk profile. You do not know if it is higher or lower than you could reasonably expect. It is more useful to compare your county rate to the state rate, which is the average for the whole state, and to other counties, especially counties that have some characteristics in common with your county. This is especially important when urban rates differ substantially from rural rates. The comparison we present is for a group of counties that are similar in characteristics related to prevention planning: population of young people (aged 10-24), the percentage of deaths in the county that are alcohol and drug-related, and a simple geographic division into Eastern and Western Washington. For each indicator the Counties Like Us rate is the average rate across all of the counties in the cluster.

The groupings for "Counties Like Us" are as follows:

Urban A\* – King County

Urban B\* – Pierce, Snohomish, and Spokane

Urban C – Benton, Clark, Kitsap, Thurston, Whatcom, and Yakima

Rural A – Ferry, Franklin, Grant, Klickitat, Okanogan, Pend Oreille, and Skamania

Rural B – Adams, Asotin, Chelan, Columbia, Douglas, Garfield, Kittitas, Lincoln, Stevens, Walla, and Whitman

Rural C – Clallam, Cowlitz, Grays Harbor, Island, Jefferson, Lewis, Mason, Pacific, San Juan, Skagit, Wahkiakum

\* For comparison, King County is compared to Urban B, but average scores for the indicators in Urban B do not include King County.

## Duplicated and Unduplicated Counts

In an unduplicated person count, each person is counted only once in a year for the specified activity or service type, even if they receive that service multiple times during the year. Examples include Temporary Assistance to Needy Families (TANF) Child Recipients, Food Stamp Recipients, and alcohol or drug treatment. Duplicated counts are made of events such as prison admissions, arrests, births, or admission to a hospital for attempted suicide. For instance, each time a person is admitted to a prison, that "event" is counted. Therefore, a person admitted more than once is included more than once in the total count.

## Rates: why is "raw data" converted to rates?

In order to make comparisons between counties and the state, and between counties that have different sizes, we use rates to describe an event in terms of a standard size population---either per 100 (percent), per 1,000 or per 100,000. For instance, what does it mean if County A has 42 alcohol retail licenses, and County B has 399? Does it mean that based on this indicator, the risk factor (Availability) is much higher in County B than it is County A? No, not if County B is a much bigger county. If County B is bigger, then the "rate" of liquor licenses per population might be the same or even lower. The only way to compare them is to convert the raw numbers to rates, based on the same population factor.

For instance:

County A: # of licenses – 42, # of persons (all ages) – 14, 297

County B: # of licenses – 399, # of persons (all ages) – 186,185

To calculate the rate per 1,000:

$42 / 14,297 = .002937$   $.002937 \times 1,000 = 2.94$

$399 / 186,185 = .002143$   $.002143 \times 1,000 = 2.14$

So the rate of alcohol retail licenses is 2.94 per 1,000 people in County A, and 2.14 per 1,000 people in County B.

**San Juan County**

**Populations subtracted for police agencies not reporting**

Police agencies are not required to report arrests or offences to UCR, they do so voluntarily. For a variety of reasons, a jurisdiction may report part or none of the arrests or offences for a year. In these cases, the denominator is the population of the areas that did report. For example, if juvenile arrests for one agency are not reported, the juveniles for that jurisdiction are not included in the population denominator either.

The tables below show the values that comprise the adjustment for your county for each age range we report. "% Subtracted" is the percent of the county's population subtracted for non-reporting. "Subtracted" is the amount subtracted. "Persons" is the locale's population. "Adjst'd Pop" is the denominator used to calculate indicator rates.

Nevertheless, rates can differ markedly from year to year particularly if a jurisdiction, where most of the crime in the county occurs, did not report. When 50% or more of the population is not reported the yearly rate is suppressed. Jurisdictions crossing county boundary lines are apportioned to each area by age, and sex of the population. When more than 40% of the reported events have been apportioned, "synthetically estimated", the yearly rate is suppressed.

All **Arrests** for 10-14 year olds have 5 year rates which represent **100.00** % of the population.  
Adjustments for non-reporting Arrests (age 10-14)

|                   | 1997 | 1998 | 1999 | 2000 | 2001 | 2002 | 2003 | 2004 | 2005 | 2006 | 2007 |
|-------------------|------|------|------|------|------|------|------|------|------|------|------|
| % Subtracted      | 0.00 | 0.00 | 0.00 | 0.00 | 0.00 | 0.00 | 0.00 | 0.00 | 0.00 | 0.00 | 0.00 |
| Subtracted, 10-14 | 0    | 0    | 0    | 0    | 0    | 0    | 0    | 0    | 0    | 0    | 0    |
| Persons, 10-14    | 857  | 875  | 931  | 942  | 957  | 965  | 965  | 965  | 963  | 949  | 935  |
| Adjst'd Pop 10-14 | 857  | 875  | 931  | 942  | 957  | 965  | 965  | 965  | 963  | 949  | 935  |

All Arrests for 10-17 year olds have 5 year rates which represent **100.00** % of the population.  
Adjustments for non-reporting Arrests (age 10-17)

|                   | 1997  | 1998  | 1999  | 2000  | 2001  | 2002  | 2003  | 2004  | 2005  | 2006  | 2007  |
|-------------------|-------|-------|-------|-------|-------|-------|-------|-------|-------|-------|-------|
| % Subtracted      | 0.00  | 0.00  | 0.00  | 0.00  | 0.00  | 0.00  | 0.00  | 0.00  | 0.00  | 0.00  | 0.00  |
| Subtracted, 10-17 | 0     | 0     | 0     | 0     | 0     | 0     | 0     | 0     | 0     | 0     | 0     |
| Persons, 10-17    | 1,306 | 1,343 | 1,428 | 1,442 | 1,464 | 1,473 | 1,473 | 1,477 | 1,491 | 1,484 | 1,475 |
| Adjst'd Pop 10-17 | 1,306 | 1,343 | 1,428 | 1,442 | 1,464 | 1,473 | 1,473 | 1,477 | 1,491 | 1,484 | 1,475 |

All Arrests for adults have 5 year rates which represent **100.00** % of the population.  
Adjustments for non-reporting Arrests (age 18+)

|                 | 1997   | 1998   | 1999   | 2000   | 2001   | 2002   | 2003   | 2004   | 2005   | 2006   | 2007   |
|-----------------|--------|--------|--------|--------|--------|--------|--------|--------|--------|--------|--------|
| % Subtracted    | 0.00   | 0.00   | 0.00   | 0.00   | 0.00   | 0.00   | 0.00   | 0.00   | 0.00   | 0.00   | 0.00   |
| Subtracted, 18+ | 0      | 0      | 0      | 0      | 0      | 0      | 0      | 0      | 0      | 0      | 0      |
| Persons, 18+    | 10,303 | 10,609 | 11,278 | 11,381 | 11,681 | 11,887 | 12,097 | 12,388 | 12,757 | 12,956 | 13,157 |
| Adjst'd Pop 18+ | 10,303 | 10,609 | 11,278 | 11,381 | 11,681 | 11,887 | 12,097 | 12,388 | 12,757 | 12,956 | 13,157 |

All Offences for persons have 5 year rates which represent **100.00** % of the population.  
Adjustments for non-reporting Offences

|                 | 1997   | 1998   | 1999   | 2000   | 2001   | 2002   | 2003   | 2004   | 2005   | 2006   | 2007   |
|-----------------|--------|--------|--------|--------|--------|--------|--------|--------|--------|--------|--------|
| % Subtracted    | 0.00   | 0.00   | 0.00   | 0.00   | 0.00   | 0.00   | 0.00   | 0.00   | 0.00   | 0.00   | 0.00   |
| Subtracted, 18+ | 0      | 0      | 0      | 0      | 0      | 0      | 0      | 0      | 0      | 0      | 0      |
| Persons, 18+    | 12,906 | 13,239 | 14,019 | 14,077 | 14,400 | 14,602 | 14,800 | 15,100 | 15,500 | 15,700 | 15,900 |
| Adjst'd Pop 18+ |        |        |        | 14,077 | 14,400 | 14,602 | 14,800 | 15,100 | 15,500 | 15,700 | 15,900 |





