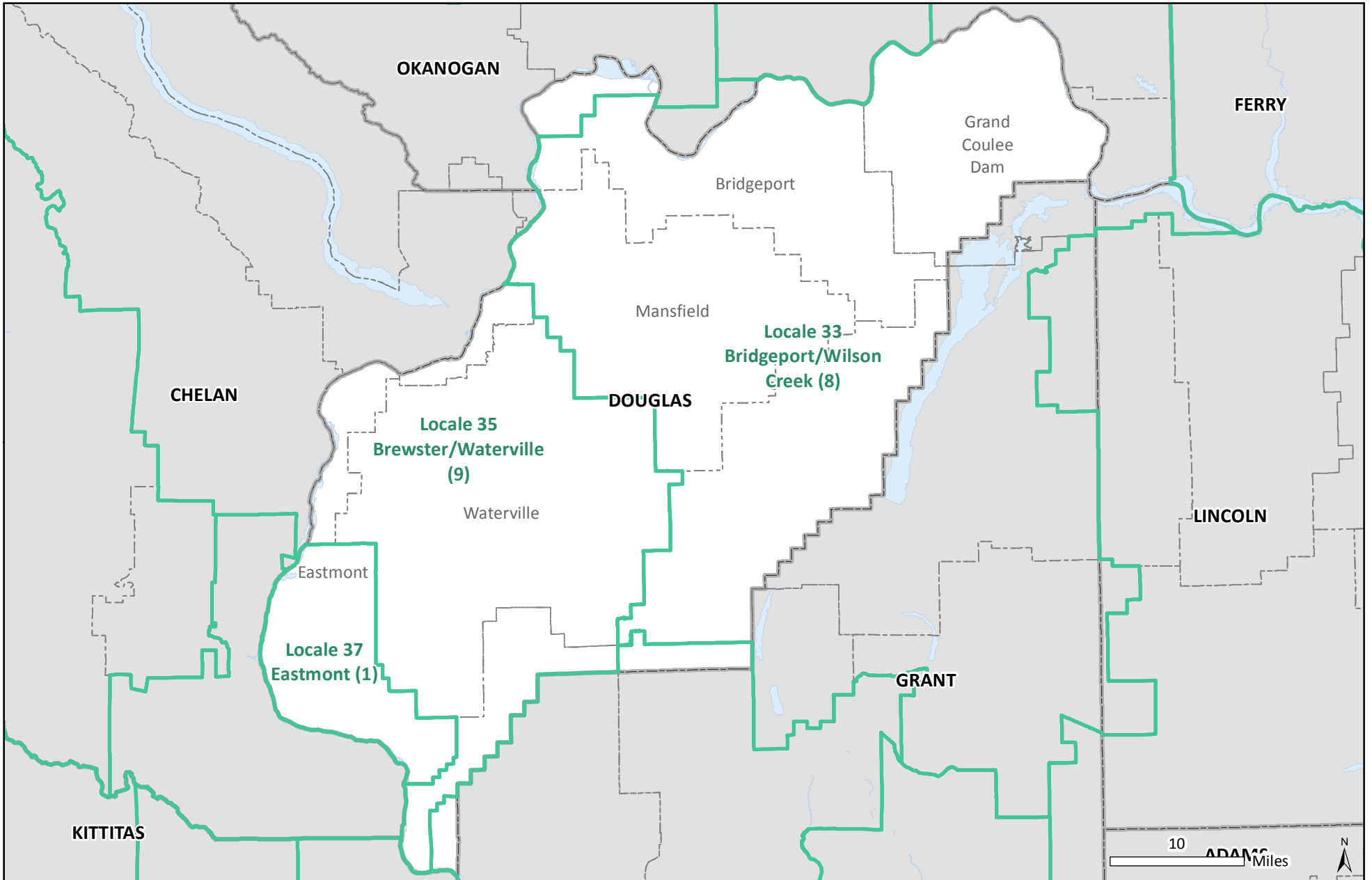


# Locales in Douglas County



- Locales
- Counties
- School Districts
- States

NOTES: Locales are school districts or groups of school districts that, when added together, include 20,000+ residents. The number of school districts in each locale is shown in parentheses. Alphabetically first and last school districts in multi-district locales form locales' names.

SOURCES: School Districts and Counties: 2010 Tiger/Line shapefiles, U.S. Census Bureau.

CONTACT: Irina Sharkova, DSHS/RDA, [irina.sharkova@dshs.wa.gov](mailto:irina.sharkova@dshs.wa.gov), 360-902-0743.