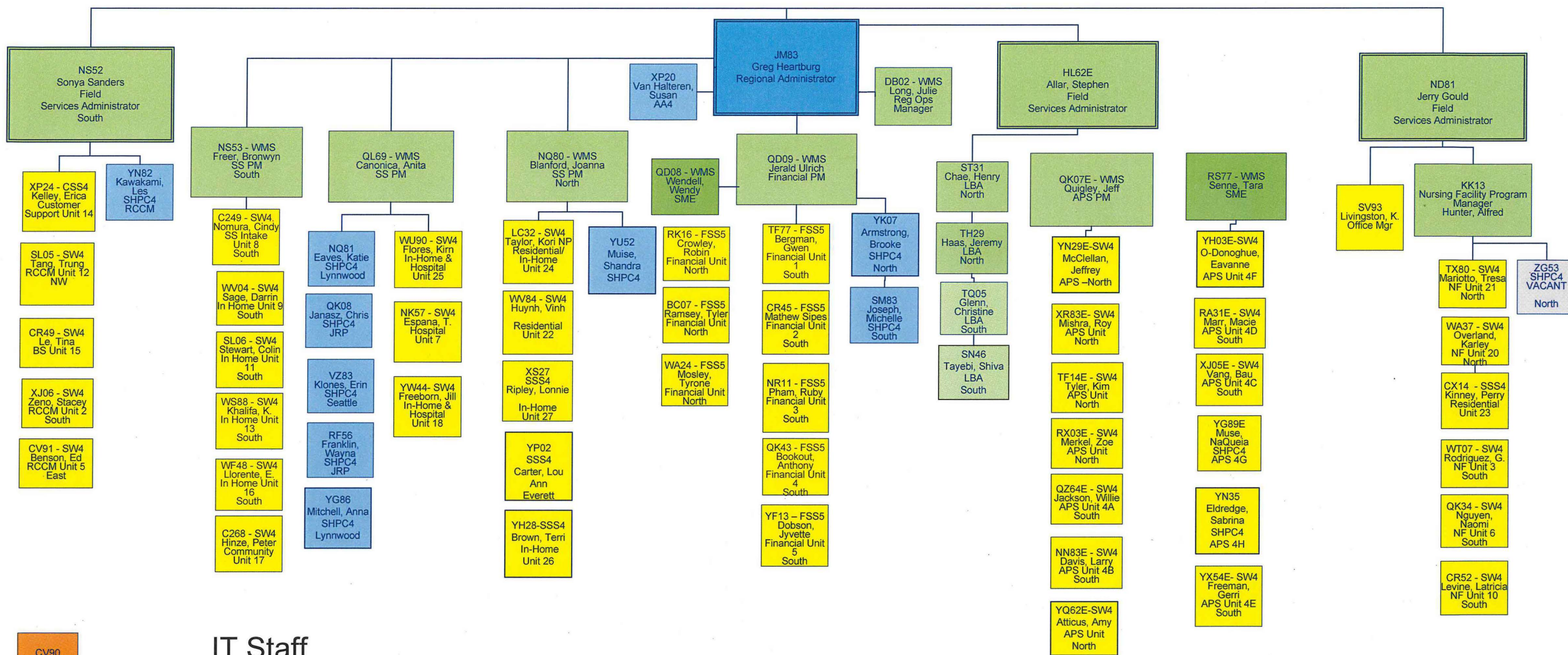
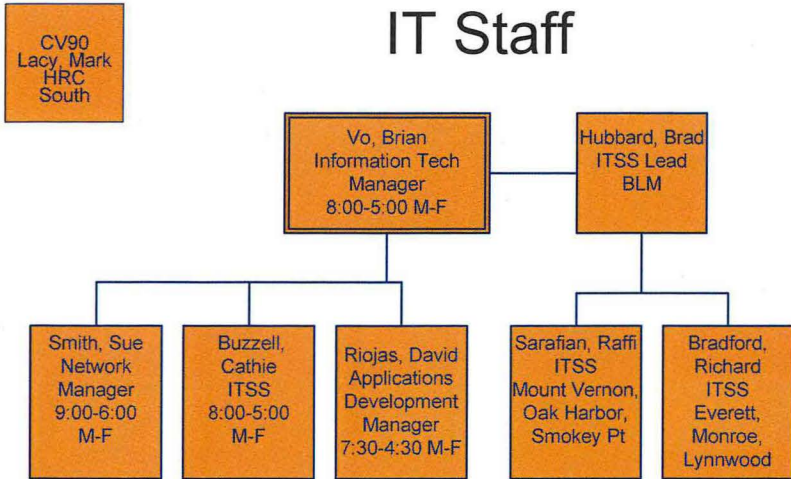


REGION 2 HOME AND COMMUNITY SERVICES

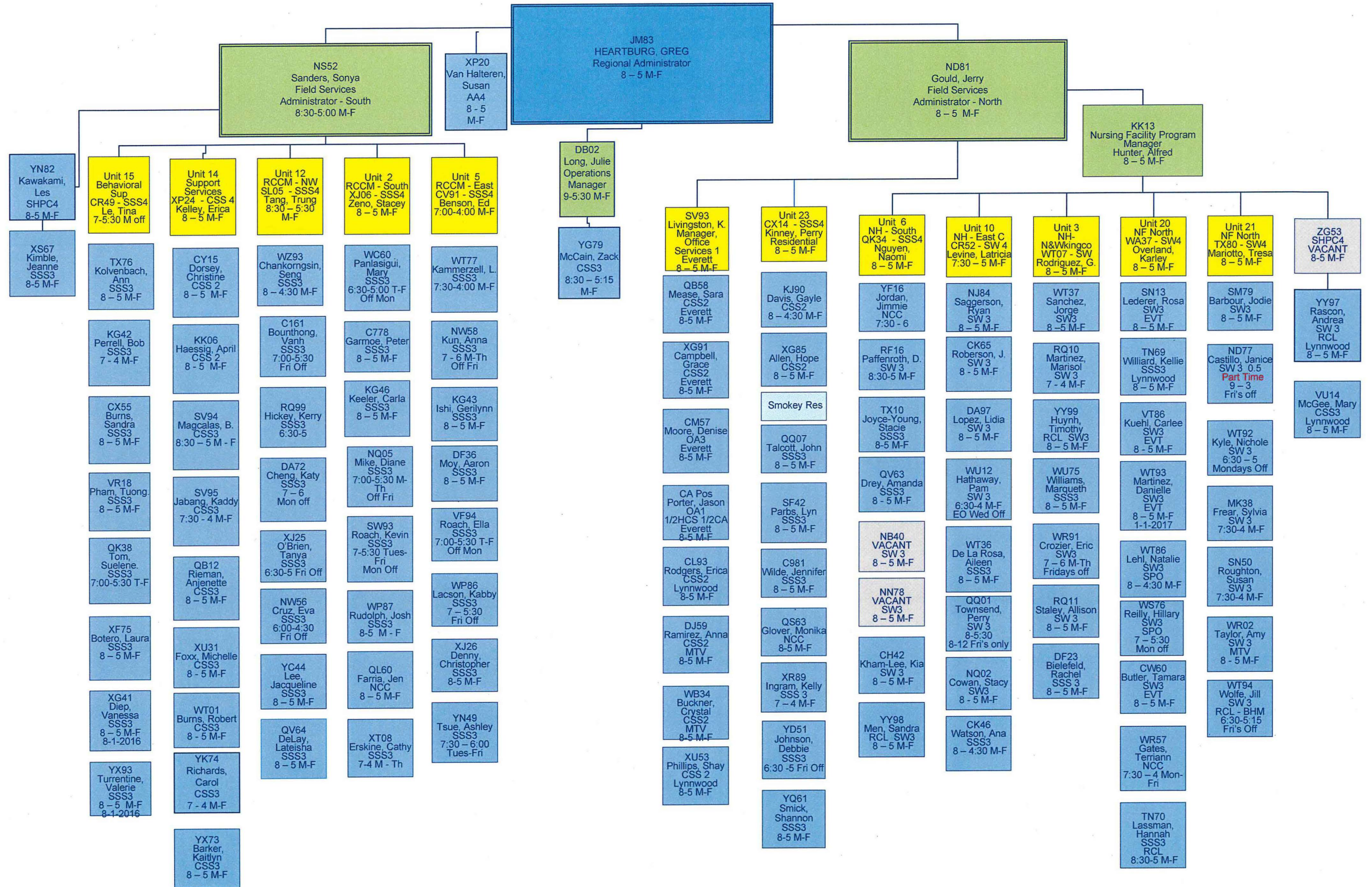


IT Staff

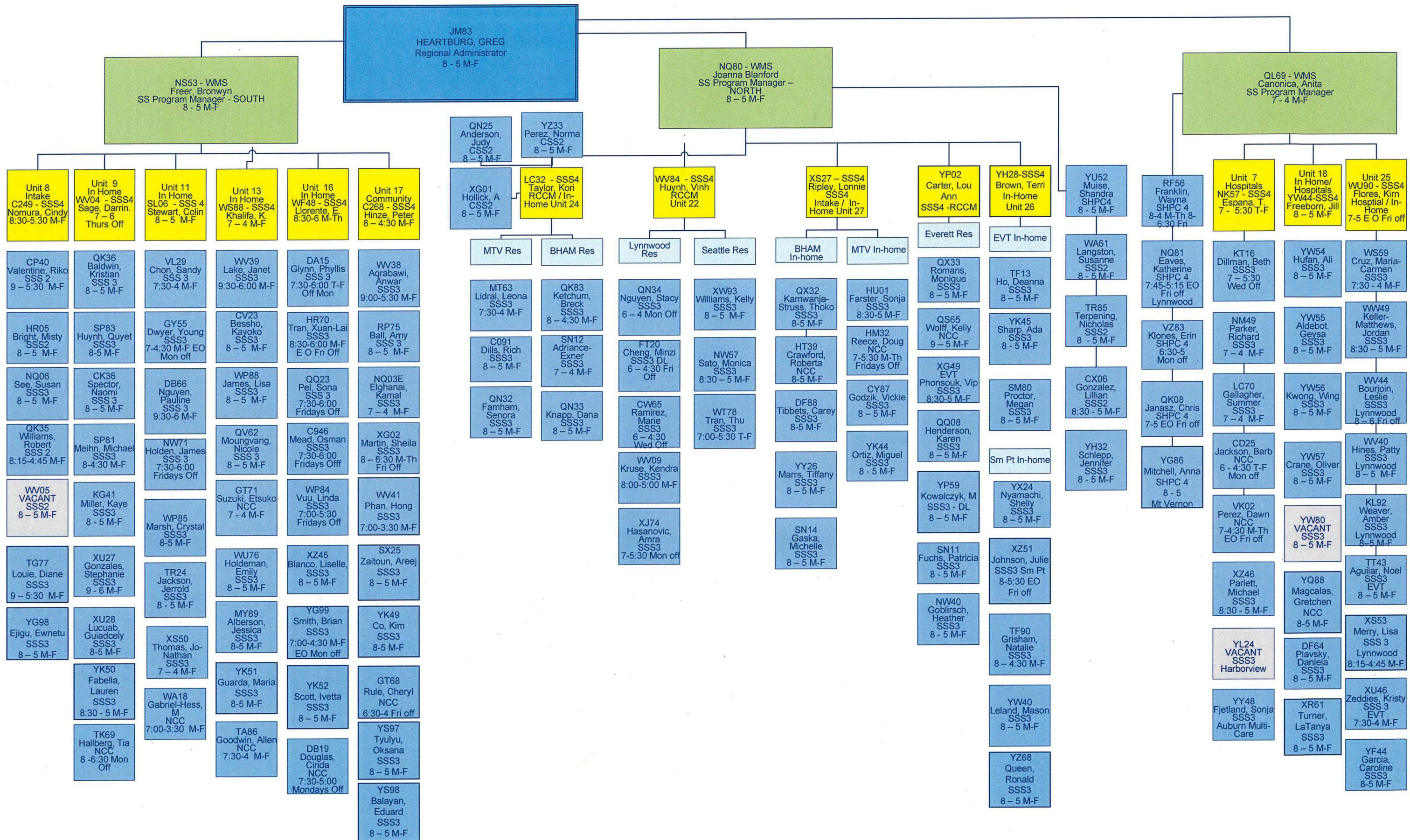


= HCS VACANT POSITION	= HCS POSITION	= HCS HQ POSITION	= HCS WMS POSITION	= HCS SUPERVISOR POSITION	= HCS EXEMPT POSITION	= HCS To Be Established
-----------------------	----------------	-------------------	--------------------	---------------------------	-----------------------	-------------------------

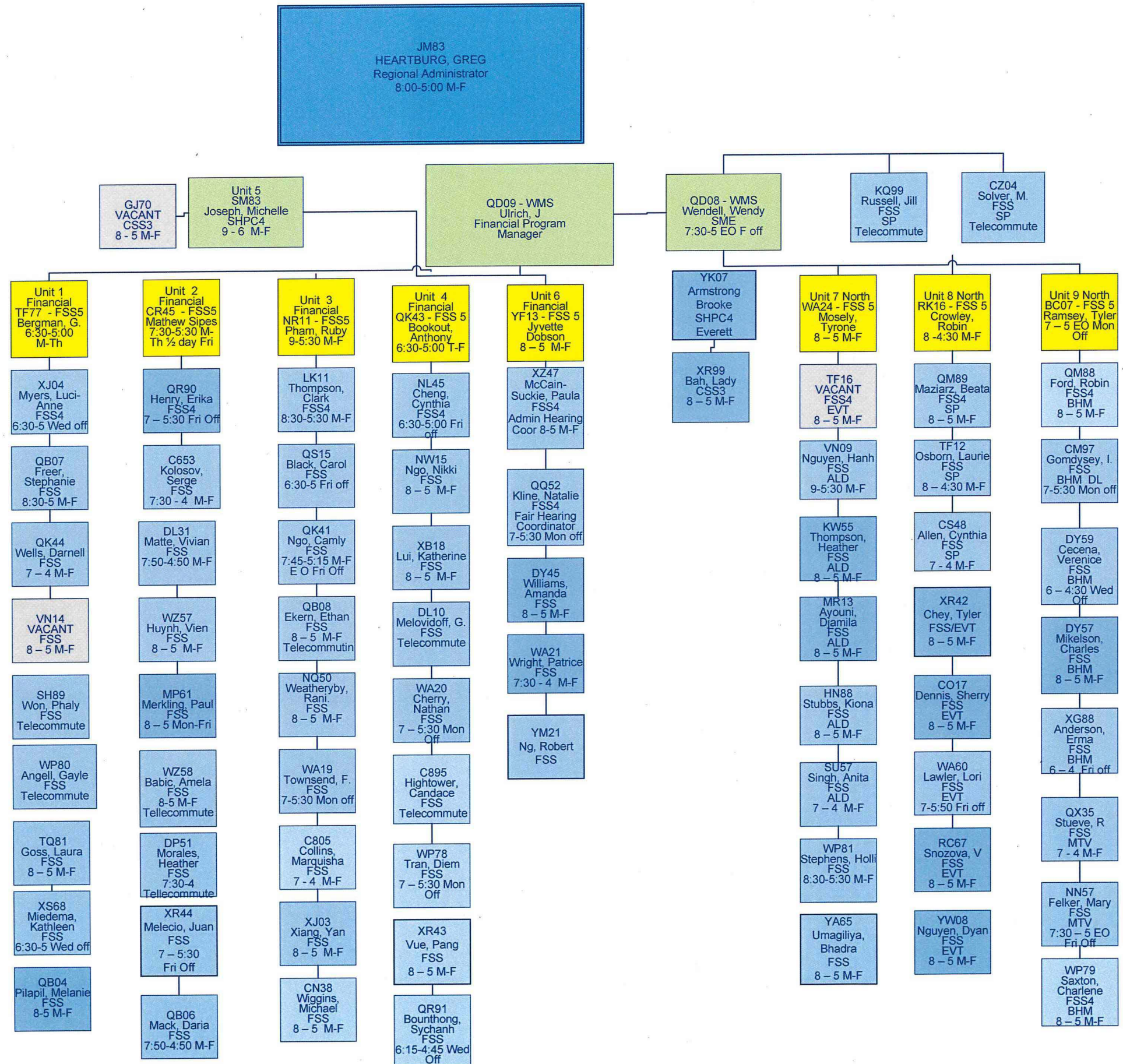
REGION 2 HOME AND COMMUNITY SERVICES



REGION 2 HOME AND COMMUNITY SERVICES



REGION 2 HOME AND COMMUNITY SERVICES



REGION 2 HOME AND COMMUNITY SERVICES

