



Washington State
Department of Social
& Health Services

AL TSA Aging and Long-Term
Support Administration

Enhanced Services Facility

Stakeholder Webinar
September 2013

Enhanced Services Facilities Workgroup, AL TSA



One

Department
Vision
Mission
Core Set of Values

Webinar Housekeeping

Audience participation:

- If registered, we have your e-mail and you are on our list serv
- If not registered, type your name into the question box at the end of this Webinar

We will let you know when we get to the places to accept questions:

- Raise your 'hand' so we can unmute you ***or***
- Type your question in the question box



One

Department
Vision
Mission
Core Set of Values

Purpose of Webinar

- Your feedback and expertise are essential
- Share with others who may have interest
- We welcome discussions with providers who may be interested
- Feel free to contact us by phone or email

<http://www.altsa.dshs.wa.gov/professional/esf.htm>



One

Department
Vision
Mission
Core Set of Values

Enhanced Services Facility Webinar Agenda

- Overview of Enhanced Services Facility work
- Outline of Draft Licensing WACs by Residential Care Services
- Overview of Draft Contract by Home and Community Services



One

Department
Vision
Mission
Core Set of Values

Enhanced Services Facility (ESF) Overview

- Purpose of ESFs
- Authority through RCW 70.97
- Funded for 2013-15
- Development of License
- Development of Contract
- Funding for 42 individuals



One

Department
Vision
Mission
Core Set of Values

ESF Overview (continued)

- Two aspects funded this biennium are distinct
 - License
 - Develops facility structure
 - Provides authority for RCS to regulate
 - Contract
 - Allows HCS to develop special terms and conditions of contract and procure providers
 - Home and Community Based Service



One

Department
Vision
Mission
Core Set of Values

ESF Overview (continued)

What's different about an ESF?

- High staffing ratios
- Enhanced Training Requirements
- Personal Care and Mental Health/Behavioral Health Support



One

Department

Vision

Mission

Core Set of Values

ESF Overview (continued)

Those served by ESF Contract are people moving from state hospitals who:

- Are eligible for ALTSA services
- Have no alternate placement
- Need high staffing levels
- Have complex personal and behavioral care needs that exceed capacity of current array of providers/supports



One

Department

Vision

Mission

Core Set of Values

ESF Overview (continued)

Timeline

July 2013-June 2014

- PHASE 1: Creating Infrastructure
- PHASE 2: Procurement of Providers
 - Request for Proposal (RFP) process will begin no later than January 2014 and will be completed within the fiscal year.

July 2014-June 2015

- PHASE 3: Utilization
 - The first ESF bed will open in July 2014
 - 42 beds filled by June 2015



One

Department
Vision
Mission
Core Set of Values

ESF Stakeholder Opportunities

- Early October: DRAFT Licensing WACs will be posted to website for review and feedback
- RCS: Public Hearing
 - notification will be sent to stakeholder with dates and details
- HCS:
 - Working to identify potential providers
 - Accepting feedback on DRAFT contract

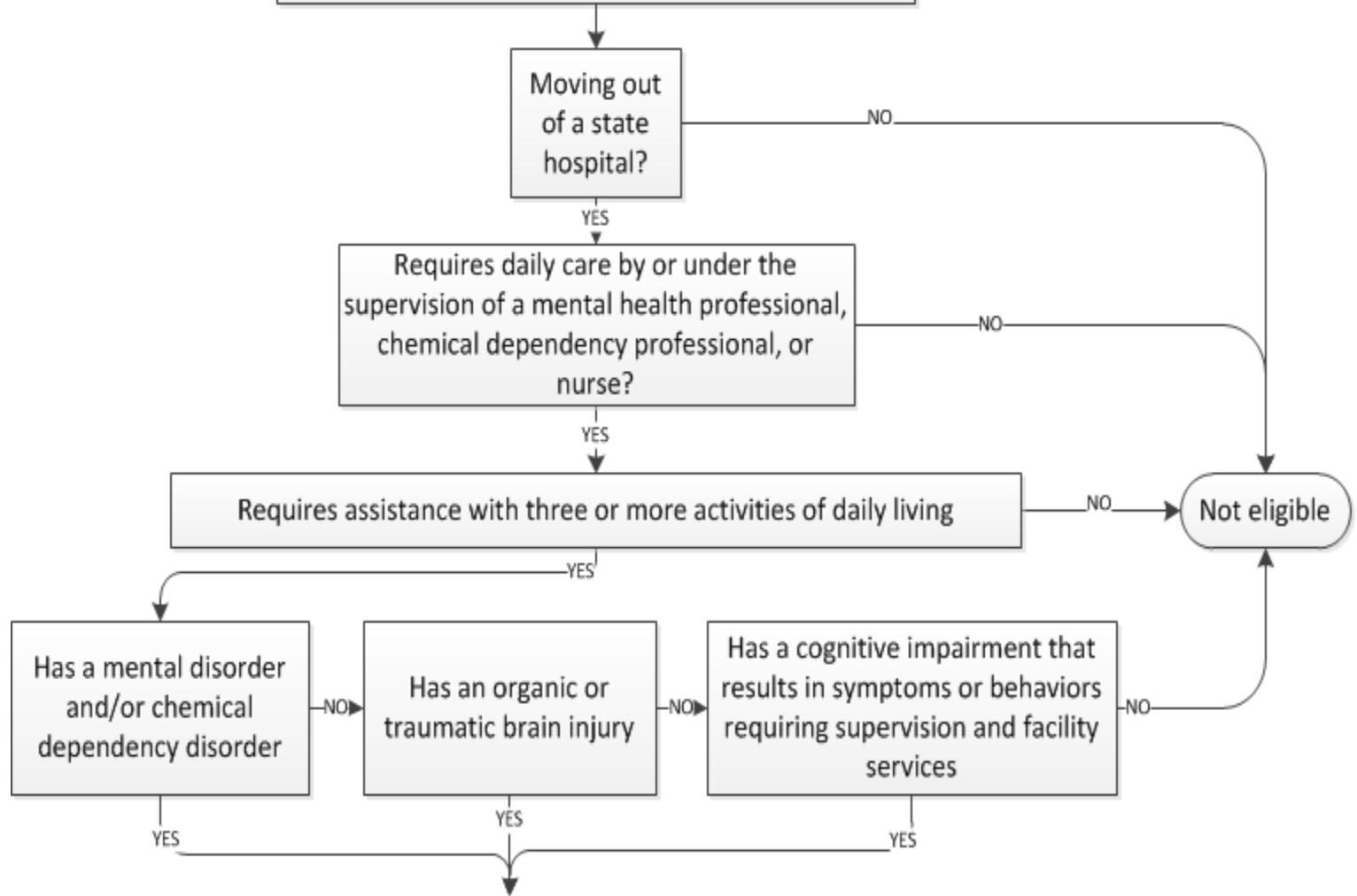


One

Department
Vision
Mission
Core Set of Values

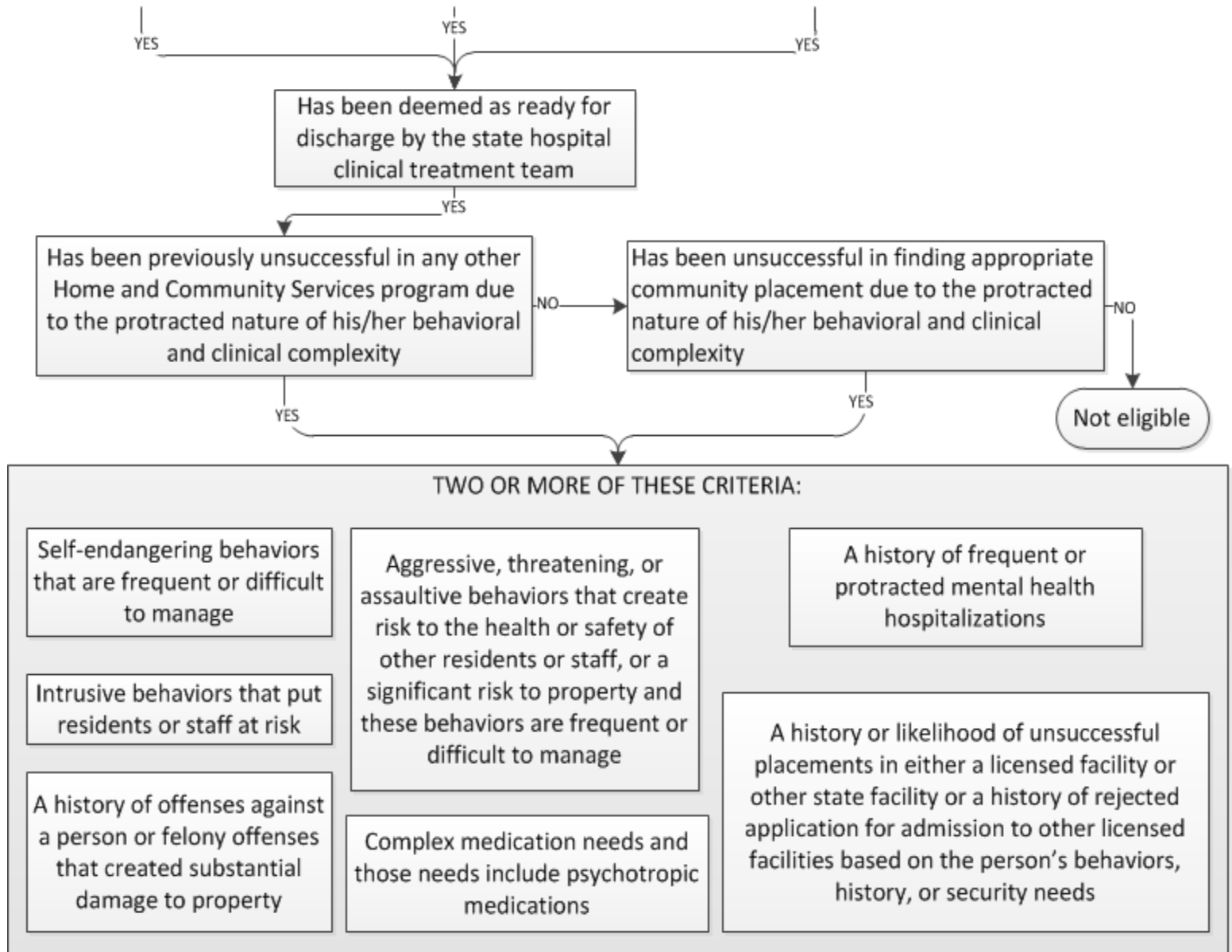
Enhanced Services Facility Eligibility Flow Chart

18 Years or older and meet these criteria



One

Department
Vision
Mission
Core Set of Values



One

Department
Vision
Mission
Core Set of Values

QUESTIONS

Webinar is open for questions about what was just shared.



One

Department

Vision

Mission

Core Set of Values

ESF Stakeholder Review

RCS Overview of Licensing Process

- Development of WACs
- Examples of WAC section titles and general proposed concepts under each title

Can be found at:

<http://www.altsa.dshs.wa.gov/professional/esf.htm>



One

Department
Vision
Mission
Core Set of Values

ESF WAC Concepts

- Informational concepts not draft language
- Physical plant requirements: construction review
- Resident safety, clean, homelike, free of hazards
- Security: policy and procedure compliance with resident rights; may include delayed egress



One

Department
Vision
Mission
Core Set of Values

ESF WAC Concepts

- Maximum of 16 residents
- Qualified administrator and sufficient staffing levels
- Formal discharge planning system



One

Department
Vision
Mission
Core Set of Values

ESF WAC Concepts

- Resident rights
- Seclusion and restraint
- Assessment and individual treatment plan
- Services provided



One

Department
Vision
Mission
Core Set of Values

ESF WAC Concepts

- Establish policies and procedures
- Reporting abuse and neglect
- Infection control
- Resident Protection Program



One

Department
Vision
Mission
Core Set of Values

QUESTIONS

Webinar is open for questions
about Licensing Process and
DRAFT Licensing WACs.



One

Department
Vision
Mission
Core Set of Values

ESF Stakeholder Review

HCS Overview of Contract Process

- Develop Funding Mechanism with CMS
- Aspects of the DRAFT Contract



One

Department
Vision
Mission
Core Set of Values

Contractor Responsibilities & Program Elements

- Homelike, promotes choice and stability
- Policies for security, safety, transitioning, crisis prevention & discharge planning
- Daily individual and group activities
- Behavior support and treatment
- Quality Improvement measures



One

Department
Vision
Mission
Core Set of Values

ESF Team and Roles

Required team members:

- The Resident & their supports
- Nursing Assistant Certified or Home Care Aide Certified
- Mental Health Professional
- Activities or Recreational Staff
- Nursing Staff



One

Department
Vision
Mission
Core Set of Values

Staffing Levels

Staffing Ratio:

- One (1) staff to three (3) residents; higher if residents' needs require

Positions counted in the staffing ratios:

- RN or LPN on site day and evenings
- Nursing Assistant Certified NAC or Home Care Aide Certified
- Mental Health Professional eight hrs./day



One

Department
Vision
Mission
Core Set of Values

Staffing

- During the day: At least two (2), regardless of minimum residents
- One awake staff for four residents at night
- For medically fragile residents – RN on site 7 am – 11 pm/on call 11 pm – 7 am



One

Department

Vision

Mission

Core Set of Values

Training

- ALTSA approved plan
- Mental health & dementia specialty training for all and developmental disability specialty training as needed
- 10 of 12 CEs for Home-care Aid Certified and in-service for NACs must be relevant to population
- 3 additional hours of training quarterly relevant to population
- Trainer meets training requirements/qualifications



One

Department
Vision
Mission
Core Set of Values

Comprehensive Assessments & Individual Treatment Plan (ITP)

- Complete a Comprehensive Assessment
- Develop one ITP for each ESF resident
- Review & update monthly
- Must include:
 - ✓ An activity section specific to behavioral challenges
 - ✓ Behavior supports designed to prevent crises and maintain placement



One

Department
Vision
Mission
Core Set of Values

QUESTIONS

Webinar is open for questions
about DRAFT Contract.



One

Department

Vision

Mission

Core Set of Values

Contact information

Traci Adair

E-mail: adairt@dshs.wa.gov

Phone: 360-725-2455 or
206-341-7653

<http://www.altsa.dshs.wa.gov/professional/esf.htm>



One

Department
Vision
Mission
Core Set of Values