

CDE February Public Webinar

February 19, 2019

What is the CDE?

The Consumer Directed Employer (CDE) project will transfer the administrative functions and responsibilities of Individual Provider (IP) management from DSHS and AAA case management staff to the Consumer Directed Employer.

Vision

More Time and Efficiency

- Case management staff will have more time to work with participants to support activities that maintain their health and well-being
- Participants will receive more focus from case managers
- IPs will work with a single entity for payroll, tax reporting, credentialing and other concerns

CDE Project Update

Recent Accomplishments

- Finished identifying test scenarios
- Completed administrative review of bidder responses
- Completed final preparations for Request for Proposal (RFP) evaluations
- Began bidder response evaluations
- Posted Talking Points #6 (Work Process Changes) & #7 (Character, Competence and Suitability Determination)
- Updated, reformatted, and posted Frequently Asked Questions (FAQs)

www.dshs.wa.gov/altsa/cde

Upcoming Tasks

- Continue bidder response evaluations
- Continue developing transition plans
- On-going communication and outreach activities
- Onboard new staff members
- Finalize the client and IP readiness strategy

Procurement Review – Key Dates

Issue RFP	10/1/18
Pre-Response Conference ✓	10/10/18 10:30AM PDT
Bidder Letter of Intent Due ✓	10/12/18 3:00 PM PDT
Publish Final Q & A ✓	11/9/18 5:00 PM PST
Bidder Responses Due ✓	2/4/19 3:00 PM PST
Written Response Evaluation Period	2/5/19 – 3/23/19
Conduct Bidder Oral Presentations/Demonstrations	3/26/19 – 3/28/19
Announce Apparent Successful Bidder	4/8/19
Contract Negotiations	4/19/19 – 6/2/19
Contract Executed	6/14/19

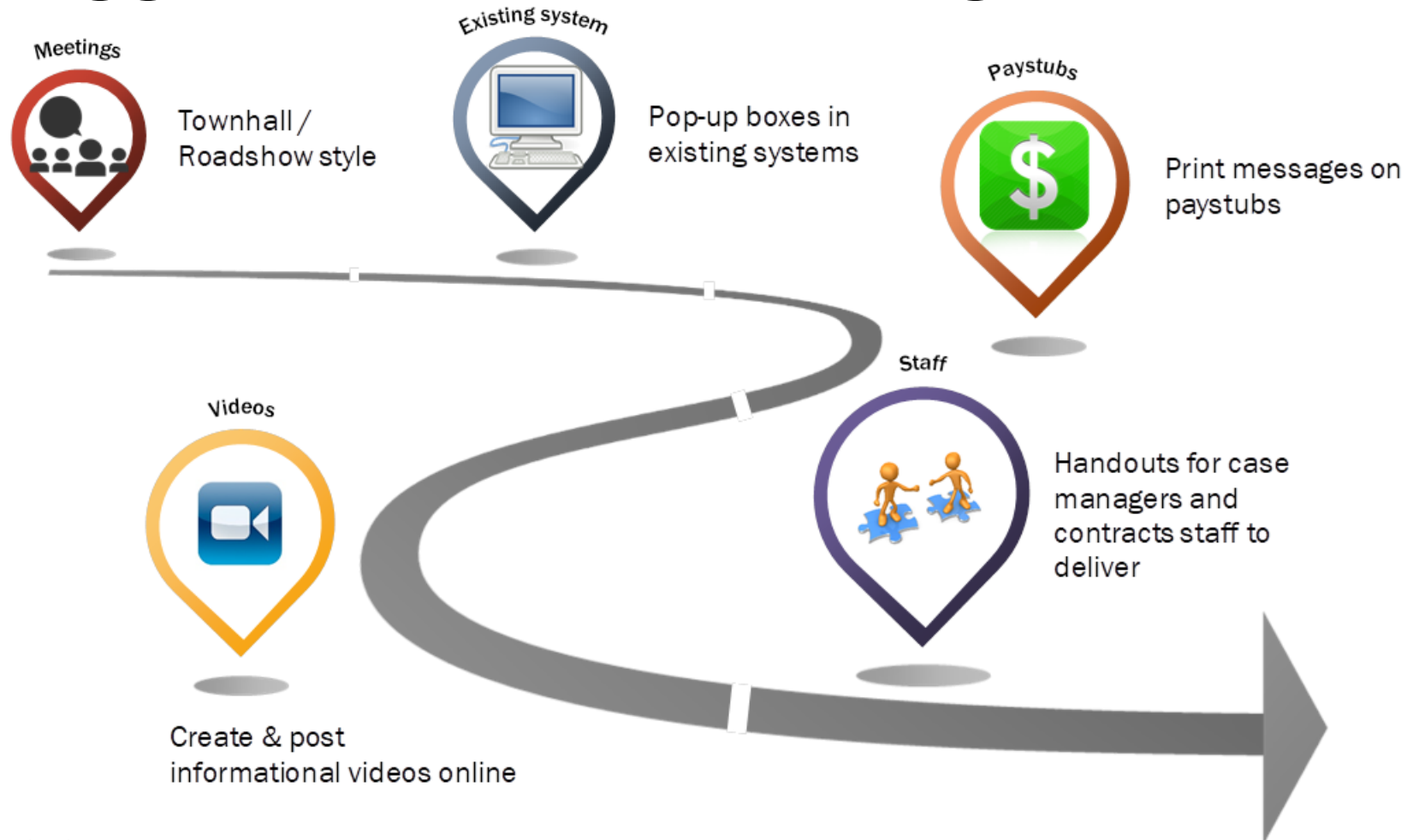
Results: Baseline Readiness Assessment

Readiness Assessment

Best way to inform Providers & Clients:

1. Written materials / letters
2. In-person outreach / training
3. Email
4. Case manager
5. Phone
6. Webinars / videos
7. IP orientation / Continuing education

Suggestions on Informing



Next webinars:

3/19/19 @ 10:00am

4/23/19 @ 10:00am

5/21/19 @ 10:00am

Please send any suggestions you have to improve the Webinars to:

CDE@dshs.wa.gov

Stay Connected

Sign up for GovDelivery:

Select *Consumer Directed Employer* under “News and Resources”

AL TSA -

<https://public.govdelivery.com/accounts/WADSHSALTSA/subscriber/new>

DDA –

<https://public.govdelivery.com/accounts/WADSHSDDA/subscribers/new>

Visit the CDE Website: <https://www.dshs.wa.gov/altsa/cde>

Email the Project: CDE@dshs.wa.gov

Marilee Fosbre
CDE Project Director
Marilee.Fosbre@dshs.wa.gov

Dennis Elonka
CDE Project Manager
Dennis.Elonka@dshs.wa.gov

Kindra Benavidez
Organizational Change Manager
Kindra.Benavidez@dshs.wa.gov