



# Governor's Opportunity for Supportive Housing (GOSH)

The Governor's Opportunity for Supportive Housing (GOSH) is a Long-Term Care service to help individuals transition from state hospitals to independent living by offering housing search assistance and ongoing tenancy support. [Learn more here.](#)

## What is Supportive Housing?



- **Immediate access** to a housing rental subsidy, support services, and home visits.
- **Person-centered** approach for individualized stability.
- **Evidence-based practice** that utilizes **Harm Reduction** and **Proactive Engagement**.

## GOSH Services

- Personalized housing supports
- Individual crisis plans and goal-setting
- Housing based on preference & need
- Advocacy with landlords & neighbors
- Transition assistance
- Care team coordination

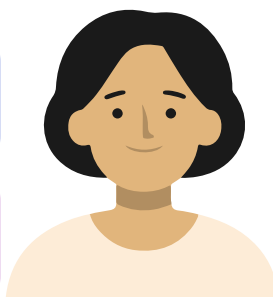
## GOSH Rental Subsidy

- Client pays 30% household income; subsidy covers the rest
- Guaranteed, timely rent assistance
- Can be used anywhere in the state
- Helps transition to a permanent voucher
- Not time-limited

## Who is Eligible for GOSH? *An individual must:*

Want to live **independently**

Qualify **financially** and **functionally** for ALTSA services



Be willing to work with a **Supportive Housing Provider**

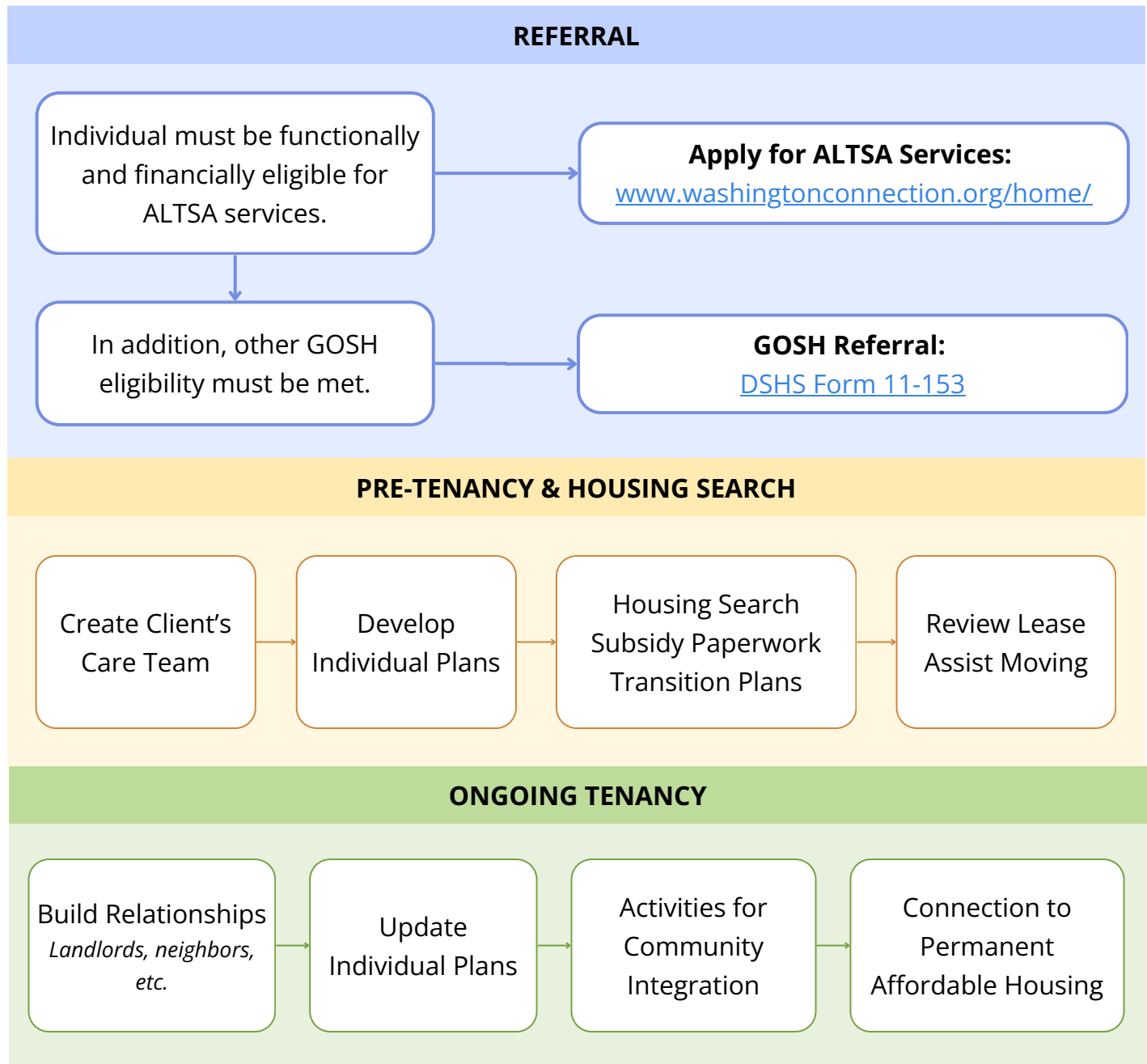
Be **discharging** or **\*diverting** from Eastern/Western State Hospitals

**\*Diversion:** Involuntary Treatment Act Holds: 120-hour | 14-day | 90-day | 180-day

**Expanded Eligibility:** Includes ALTSA clients currently in HCS-funded residential settings who transitioned or were diverted from E/WSH within the past 18 months.

## GOSH Process: What to Expect

We contract with a Supportive Housing Provider to partner alongside the client during pre-tenancy and housing search. Once housing is secured, they provide ongoing tenancy support.



### More Resources

**ALTSA Services:** [www.dshs.wa.gov/altsa/long-term-care-services-information](http://www.dshs.wa.gov/altsa/long-term-care-services-information)

**ALTSA Supportive Housing:** [www.dshs.wa.gov/altsa/supportive-housing-services](http://www.dshs.wa.gov/altsa/supportive-housing-services)

**Regional Housing Program Managers:** [Contact Us](#)

**GOSH Client Story:** [Anna's Journey Home](#)