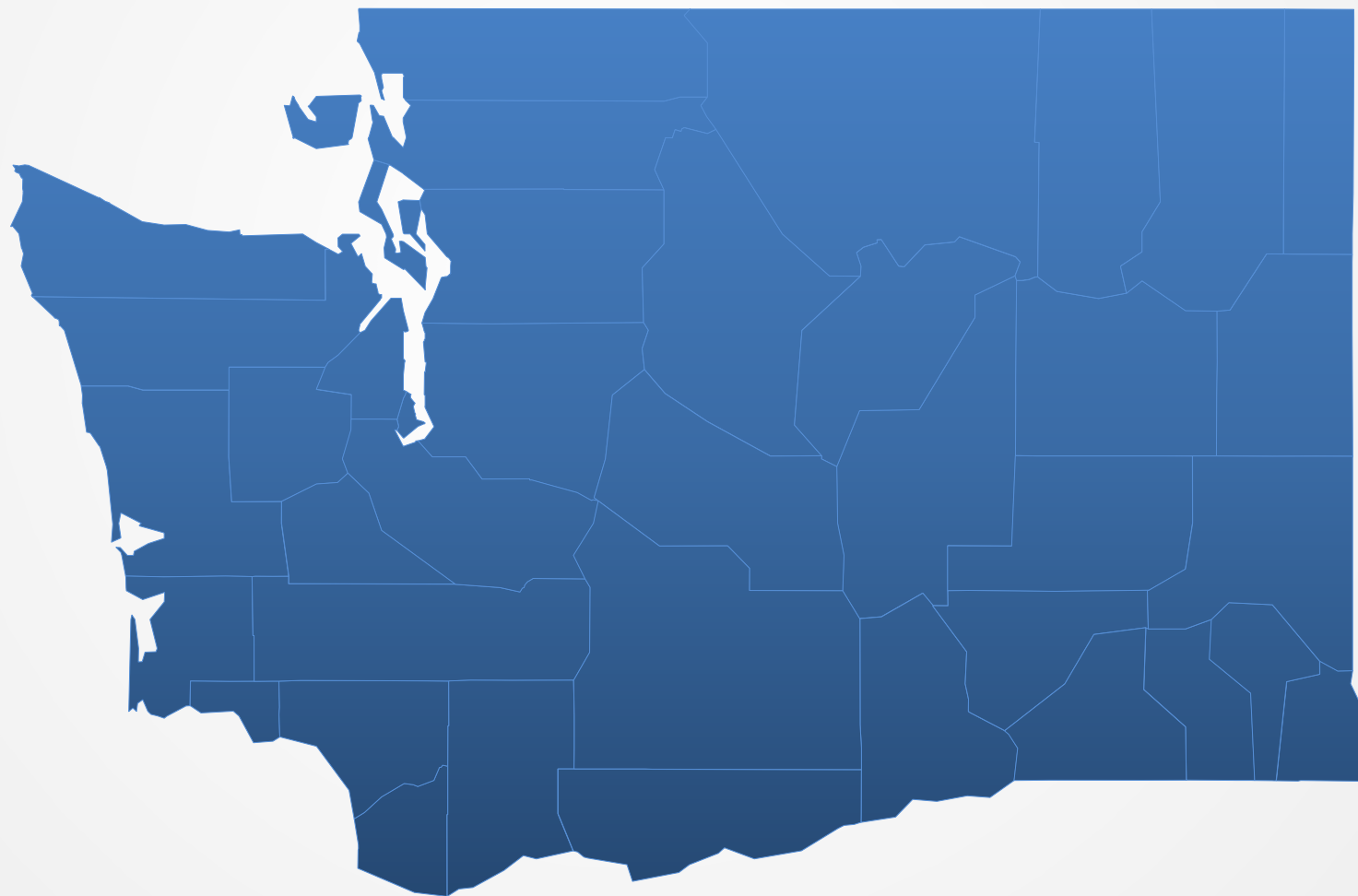


Traumatic Brain Injury Strategic Partnership Advisory Council

TRAUMATIC BRAIN INJURY

Strategic Partnership Advisory Council
of Washington State





Traumatic Brain Injury Strategic Partnership Advisory Council

Mission Statement (Art. II Bylaws)

The mission of the **TBI Council of Washington** is to advise and work in collaboration with the **Department of Social and Health Services (DSHS)** and other stakeholders to advise the **Governor**, the **Legislature** and the **Secretary of the Department of Social and Health Services** on the best ways to create and provide an array of coordinated, accessible services and supports which promote optimal quality of life for all individuals that have been impacted by a traumatic brain injury, including their families.



Traumatic Brain Injury Strategic Partnership Advisory Council

TBI Council Meeting Norms

- Respectfully engage and listen to discussions by allowing one member to speak at a time
- Address differences in opinion in a thoughtful and respectful manner
- Disclose any potential conflicts of interest that pertain to decisions made by the Council
- Adhere to meeting agenda timeframes and refrain from disrupting Council meetings
- Any accommodations for clarity or support among Council Members will be acknowledged and addressed
- Provide your Name, each time you are speaking
- Quorum - Over 50% of those assigned present



Traumatic Brain Injury Strategic Partnership Advisory Council

Approval of Meeting Minutes



Traumatic Brain Injury Strategic Partnership Advisory Council

Council Report

Traumatic Brain Injury Strategic Partnership Advisory Council

CORNERSTONE FRAMEWORK

BUILD COMMITMENT and RESPONSIVENESS WITHIN GOVERNANCE INSTITUTIONS and LEADERSHIP

● INSTITUTIONAL AWARENESS and CAPACITY

● STRATEGIC PARTNERSHIP and ADVISEMENT

ENGAGE IN PARTNERSHIPS and LEARNING TO PROMOTE EQUITY, BELONGING, and POSITIVE COMMUNITY NORMS FOR INJURY and VIOLENCE PREVENTION

● PROFESSIONAL DEVELOPMENT and WORKFORCE TRANSFORMATION

● COMMUNITY-BASED SUPPORT and RESILIENCE

EXPAND LEARNING OPPORTUNITIES FOR STUDENTS, WORKFORCES, CAREGIVERS, and COMMUNITIES

EQUITY and BELONGING

INCREASE AWARENESS, PREVENTION, RECOVERY, and RESILIENCE AROUND TBI, INJURY and VIOLENCE, and ACCESS TO RESOURCES



Traumatic Brain Injury Strategic Partnership Advisory Council

Cornerstones of Comprehensive Plan

Institutional Awareness and Capacity

Build commitment and responsiveness within governance institutions and leadership

Strategic Partnerships and Advisement

Engage in partnerships and learning to promote equity, belonging, and positive community norms for injury and violence prevention

Professional Development and Workforce Transformation

Expand learning opportunities for students, workforces, caregivers, and communities

Community-Based Support and Resilience

Increase awareness, prevention, recovery, and resilience around TBI, injury and violence, and access to resources

Traumatic Brain Injury Strategic Partnership Advisory Council

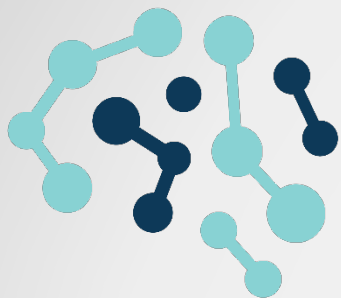


The Palouse



Traumatic Brain Injury Strategic Partnership Advisory Council

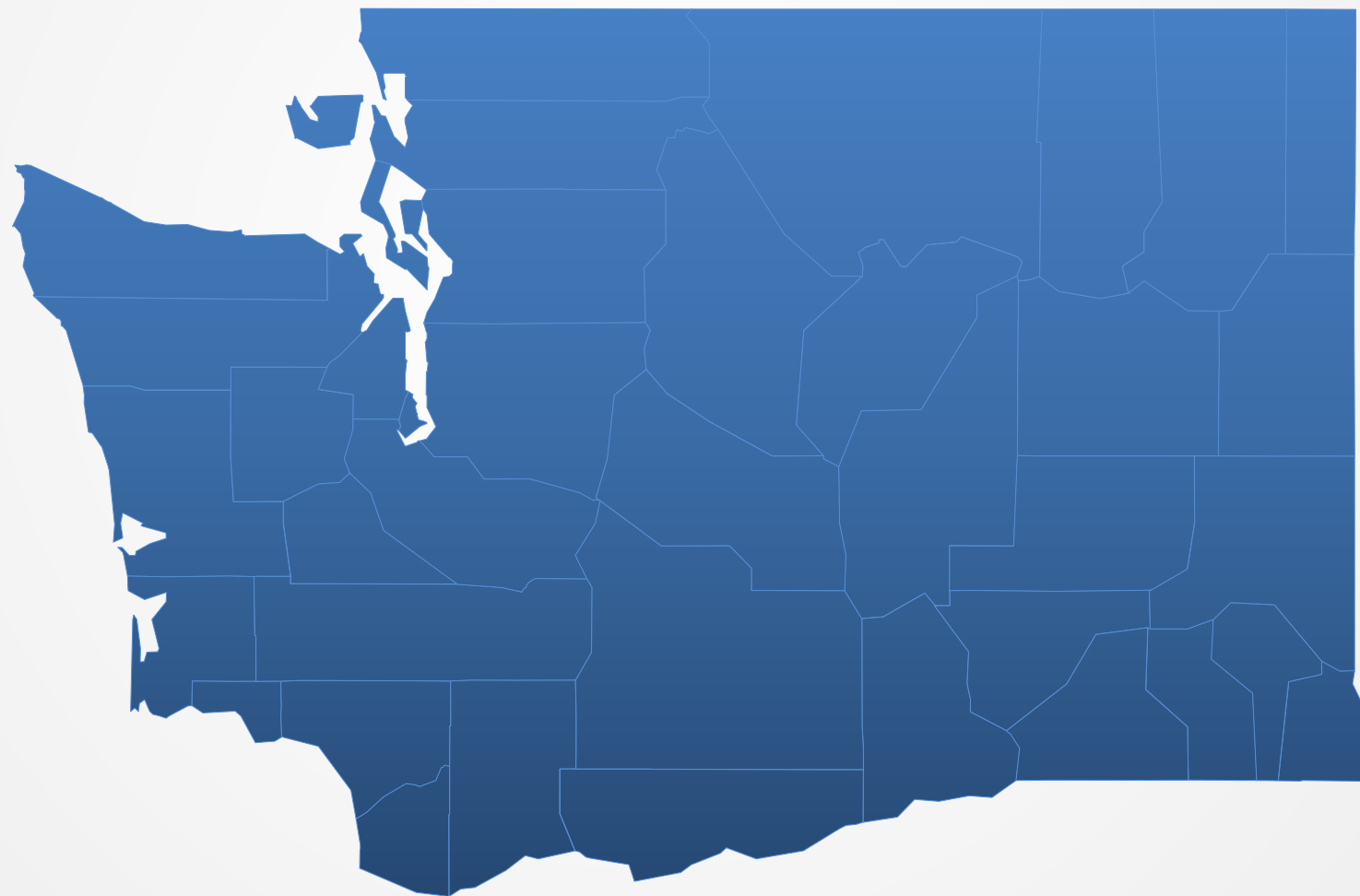
TBI Pilot-to-Program Department of



Traumatic Brain Injury Strategic Partnership Advisory Council

TRAUMATIC BRAIN INJURY

Strategic Partnership Advisory Council
of Washington State





Traumatic Brain Injury Strategic Partnership Advisory Council

Department of Corrections (DOC)
TBI Pilot-to-Program

Amber Medina

MA, LMHC

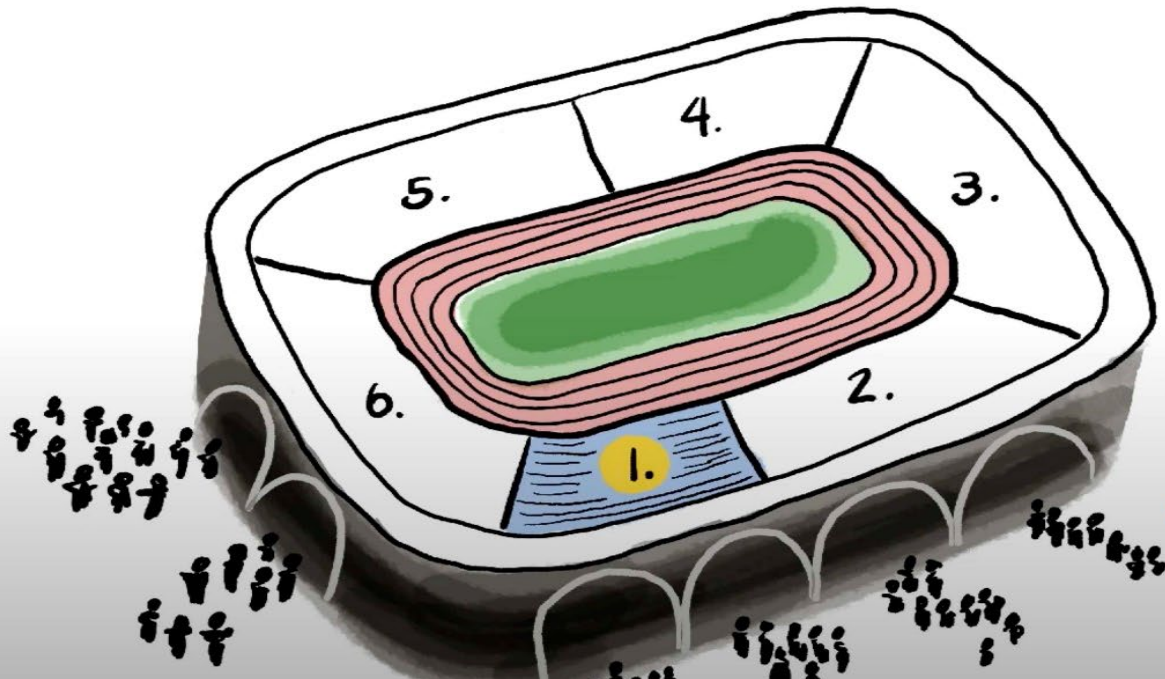
TBI Pilot-to-Program Background

- Council Recommendation since 2013
- UW and DOC Grant Projects (2017 – 2021)
- Independent Living Pathway (Aug – Dec 2020)
- Developed a Pilot to Program
- FYI – Prison vs Jail – 366 Days is the cut-off
- “TBI Inside Corrections Video” - [TBI Inside Corrections \(youtube.com\)](#)

Screening

TBI Inside Corrections

1 SCREENING

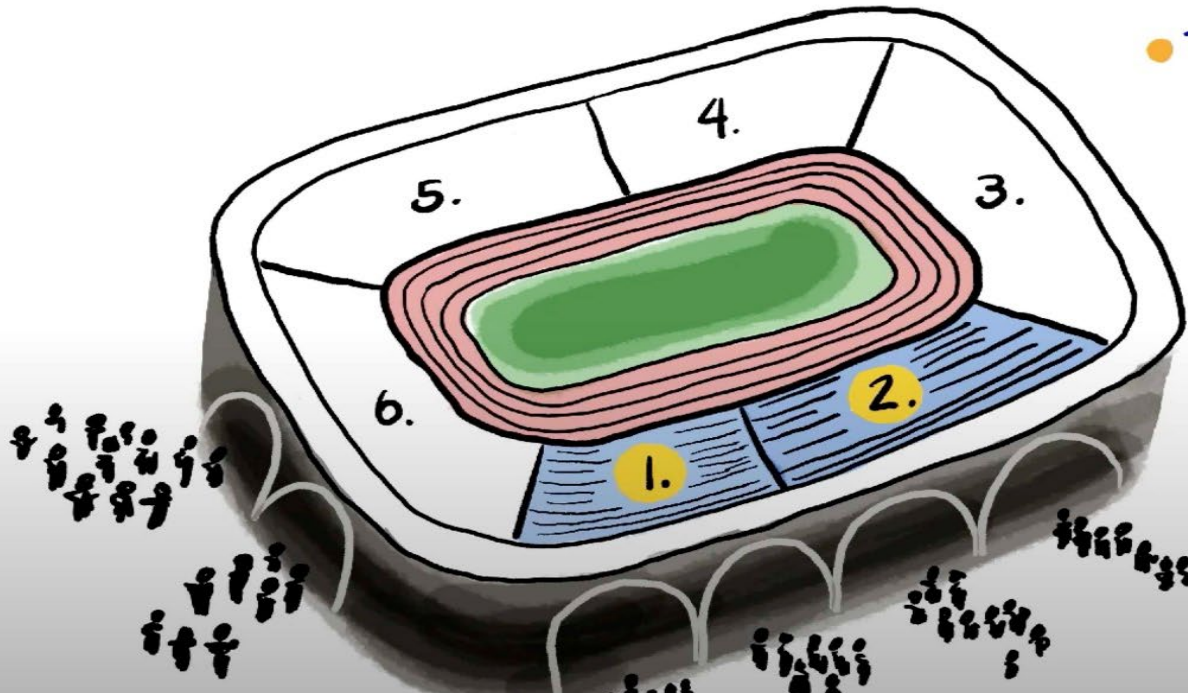


- IDENTIFY NEEDS
- POTENTIAL SUPPORTIVE OPPORTUNITIES
- FOLLOWUP ON NEW INJURIES
- TIMELY TREATMENTS

Resources

TBI Inside Corrections

2. INCARCERATED INDIVIDUAL PROGRAMMING AND SUPPORTS

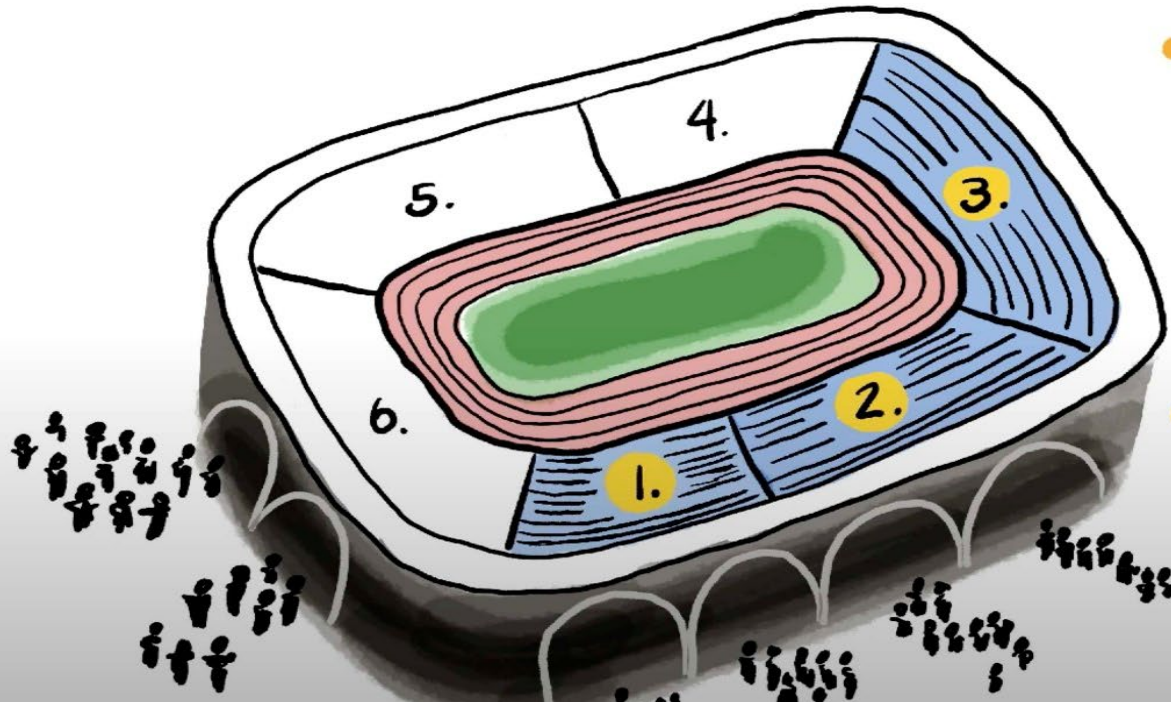


- TRAINING COURSE
- RESOURCE LIBRARY
- PRE-RELEASE ASSISTANCE PROGRAM (PAP)
- FAMILY MATERIALS

Virtual Support Groups

TBI Inside Corrections

3 VIRTUAL SUPPORT GROUPS AND PEER MENTORING

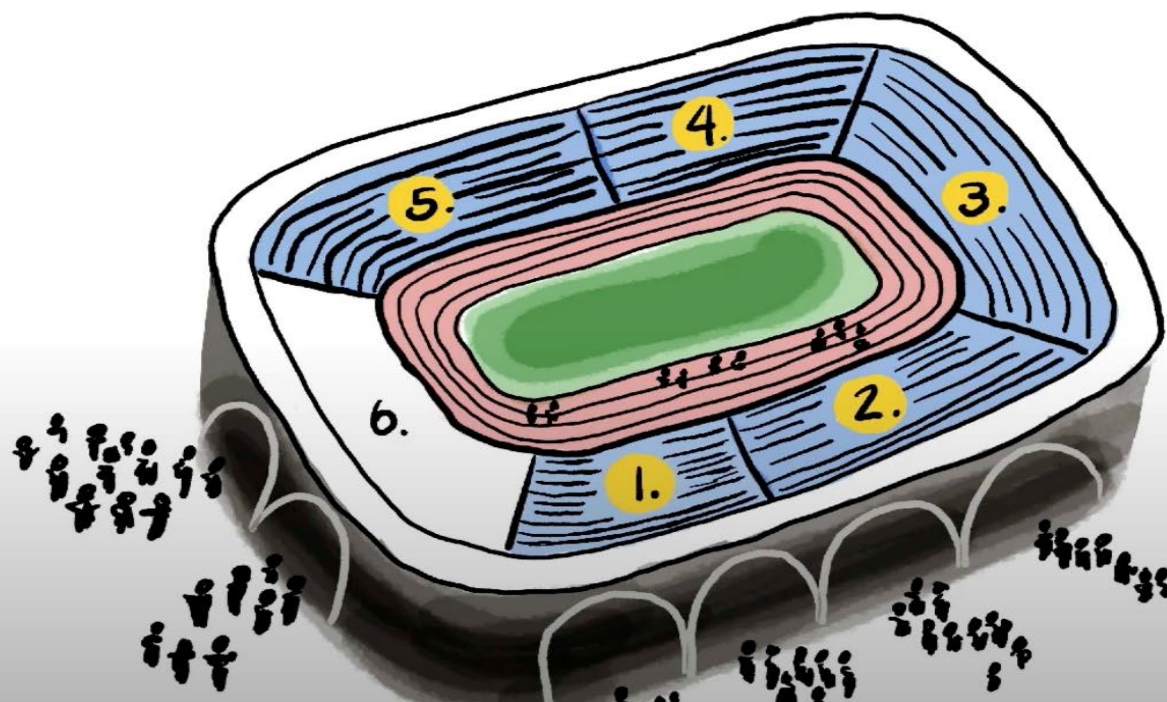


- CONNECT
- COMMUNITY AND PROFESSIONAL CONNECTIONS
- PEER MENTORING

Training and Skill Building

TBI Inside Corrections

5. TRAINING AND SKILL-BUILDING

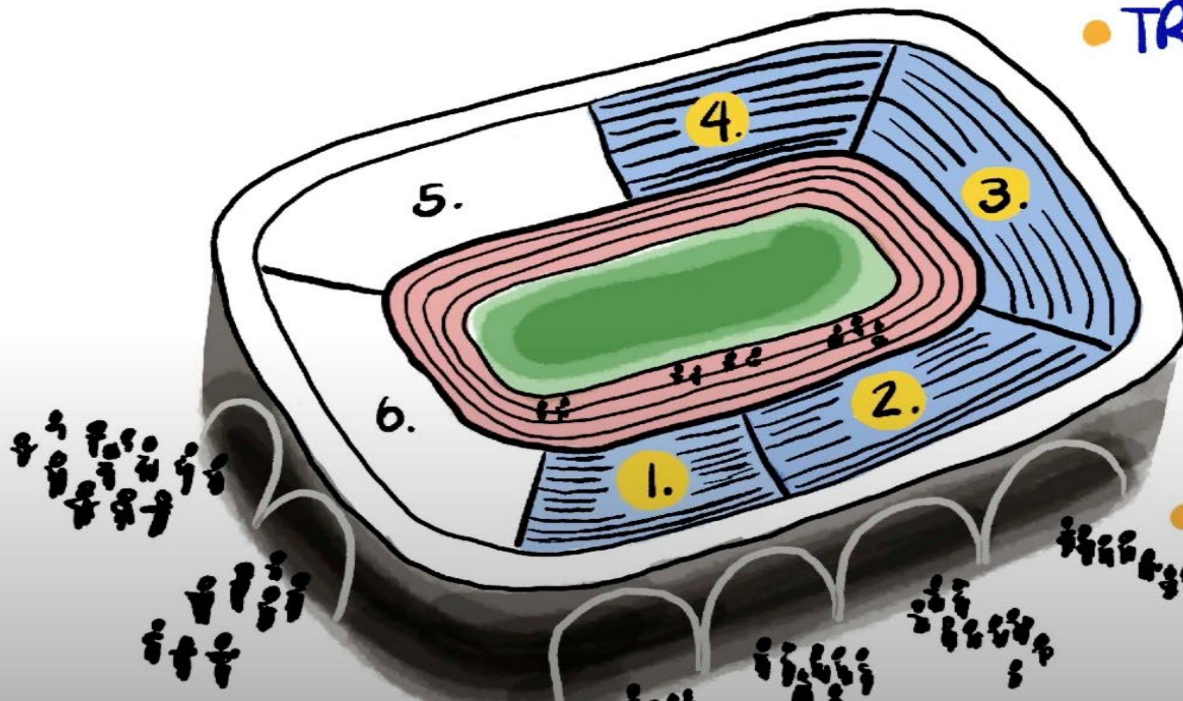


- COMMUNITY CORRECTIONS OFFICERS
- CONTINUITY OF CARE AFTER RELEASE

DOC Workforce Training

TBI Inside Corrections

4. DOC STAFF



- TRAINING COURSES

- RESOURCE LIBRARY

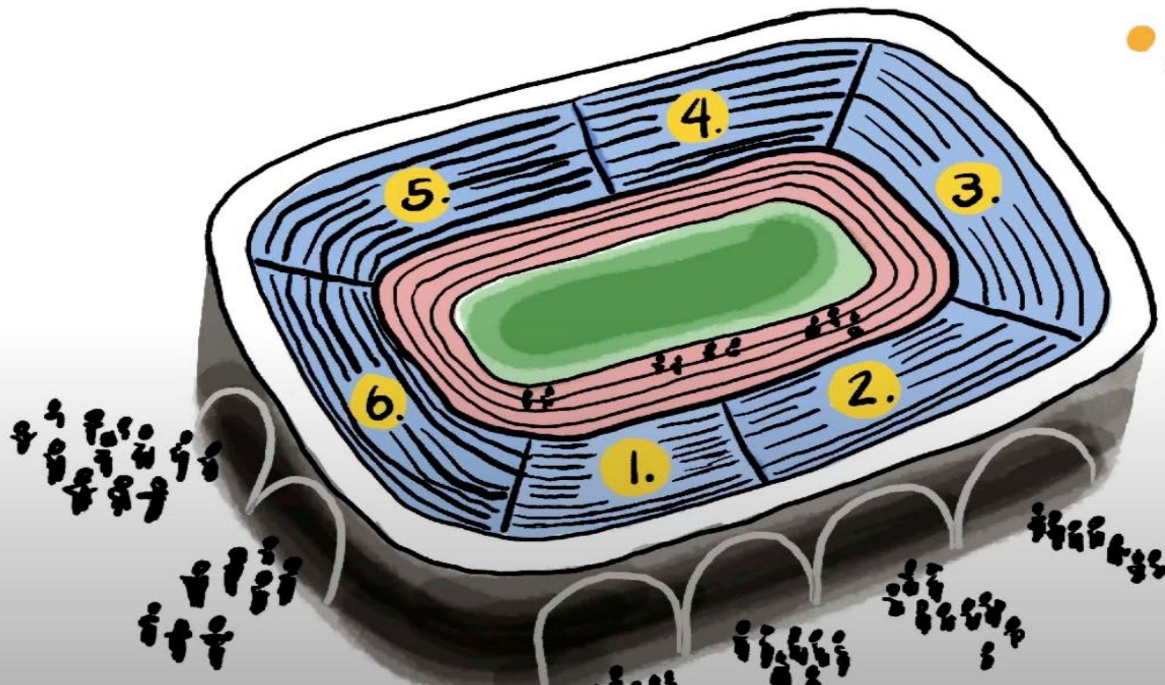
- RESOURCE MATERIALS

- IMPROVE COMMUNICATION

Resource Development

TBI Inside Corrections

6. RESOURCE DEVELOPMENT



- ASSETS AND SCREENING FOR PRE-RELEASE PLANNING
- PUBLIC VIRTUAL SUPPORT GROUPS
- STATEWIDE TBI RESOURCE MANAGERS WITH SPECIALIZED TRAINING

TBI Pilot-to-Program

- Overview of Elements:
 - Procedures
 - Screening
 - Resources
 - Virtual Support Groups
 - Training and Skill Building
 - DOC Workforce Training
 - Resource Development
 - Lessons Learned

TBI Pilot-to-Program

- Project Completion: Jun 2024
- Project Evaluation and Outcomes
- DOC Ownership of Program Implementation
- Information here: [Corrections System | DSHS \(wa.gov\)](#)