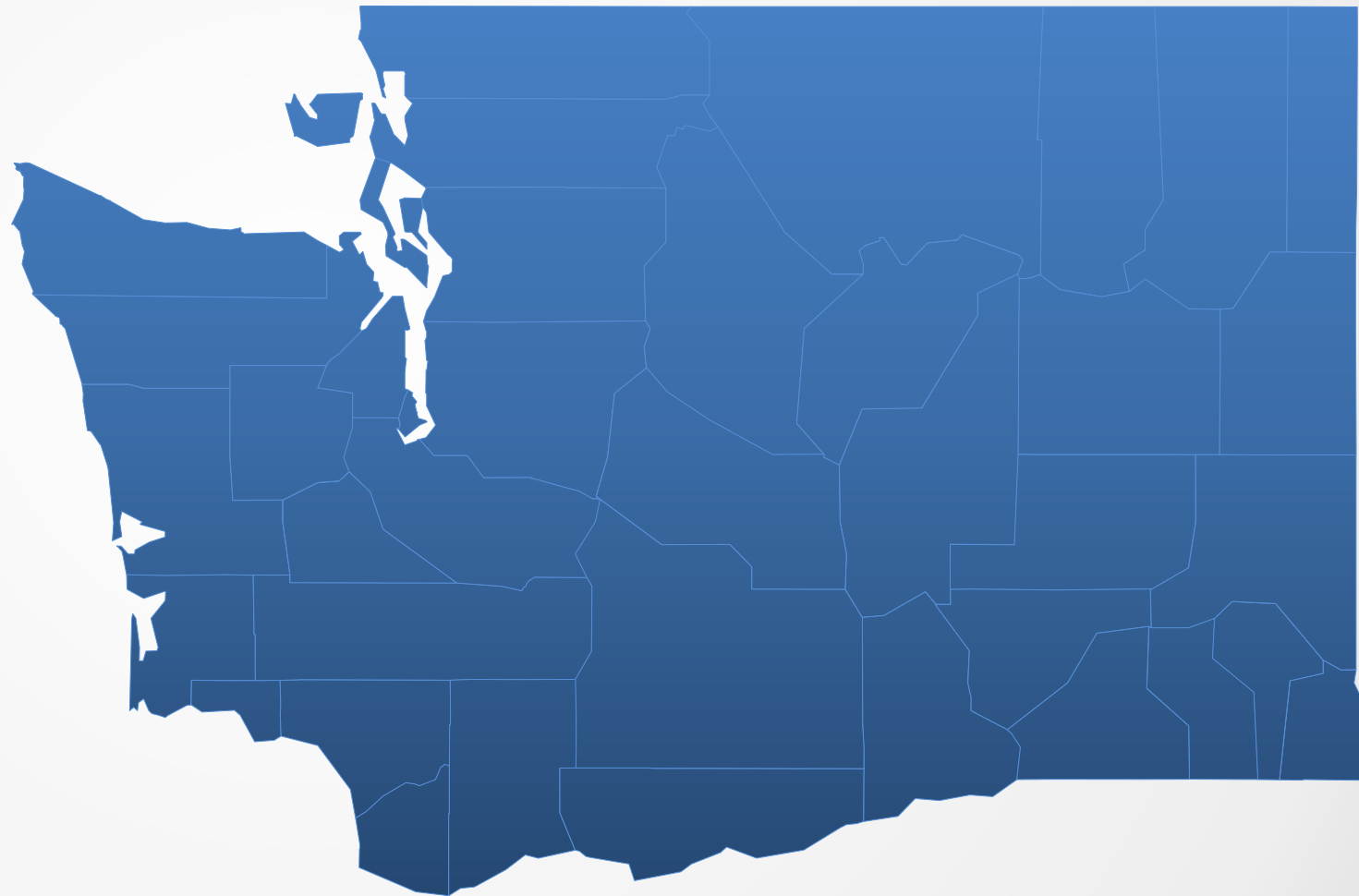
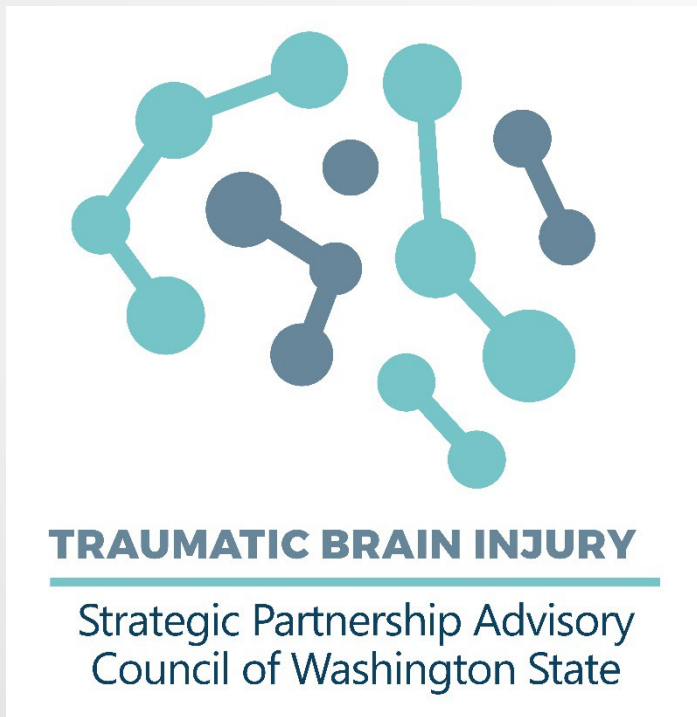




Traumatic Brain Injury Strategic Partnership Advisory Council





Traumatic Brain Injury Strategic Partnership Advisory Council

Mission Statement (Art. II Bylaws)

The mission of the **TBI Council of Washington** is to advise and work in collaboration with the **Department of Social and Health Services (DSHS)** and other stakeholders to advise the **Governor**, the **Legislature** and the **Secretary of the Department of Social and Health Services** on the best ways to create and provide an array of coordinated, accessible services and supports which promote optimal quality of life for all individuals that have been impacted by a traumatic brain injury, including their families.



Traumatic Brain Injury Strategic Partnership Advisory Council

TBI Council Meeting Norms

- Respectfully engage and listen to discussions by allowing one member to speak at a time
- Address differences in opinion in a thoughtful and respectful manner
- Disclose any potential conflicts of interest that pertain to decisions made by the Council
- Adhere to meeting agenda timeframes and refrain from disrupting Council meetings
- Any accommodations for clarity or support among Council Members will be acknowledged and addressed
- Provide your Name, each time you are speaking



Traumatic Brain Injury Strategic Partnership Advisory Council

Approval of Meeting Minutes



Traumatic Brain Injury Strategic Partnership Advisory Council

Council Report



Traumatic Brain Injury Strategic Partnership Advisory Council

Washington Information Network 211 WA211





Traumatic Brain Injury Strategic Partnership Advisory Council

Palouse Falls State Park Washtucna, WA





Traumatic Brain Injury Strategic Partnership Advisory Council

**TBI Research Survey Study
UO CBIRT**

**Center for Brain Injury
Research and Training**



Traumatic Brain Injury Strategic Partnership Advisory Council



The survey will help to inform future statewide partnership development, awareness, and local resources to better assist Washington residents who are experiencing TBI.

Survey for Persons with TBI

Survey for Caregivers

Survey for Providers

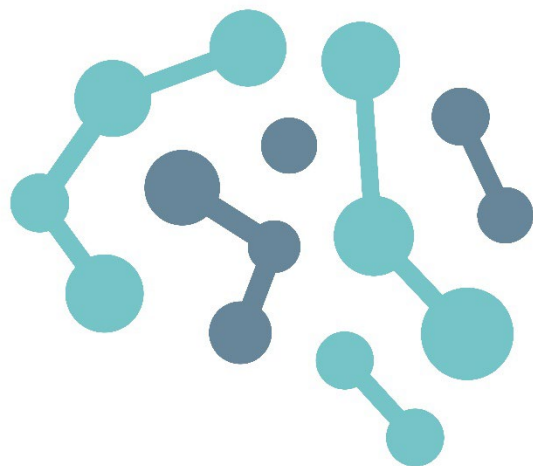


Traumatic Brain Injury Strategic Partnership Advisory Council

Pathway Brief / Discussion



Traumatic Brain Injury Strategic Partnership Advisory Council



TRAUMATIC BRAIN INJURY

Strategic Partnership Advisory
Council of Washington State

