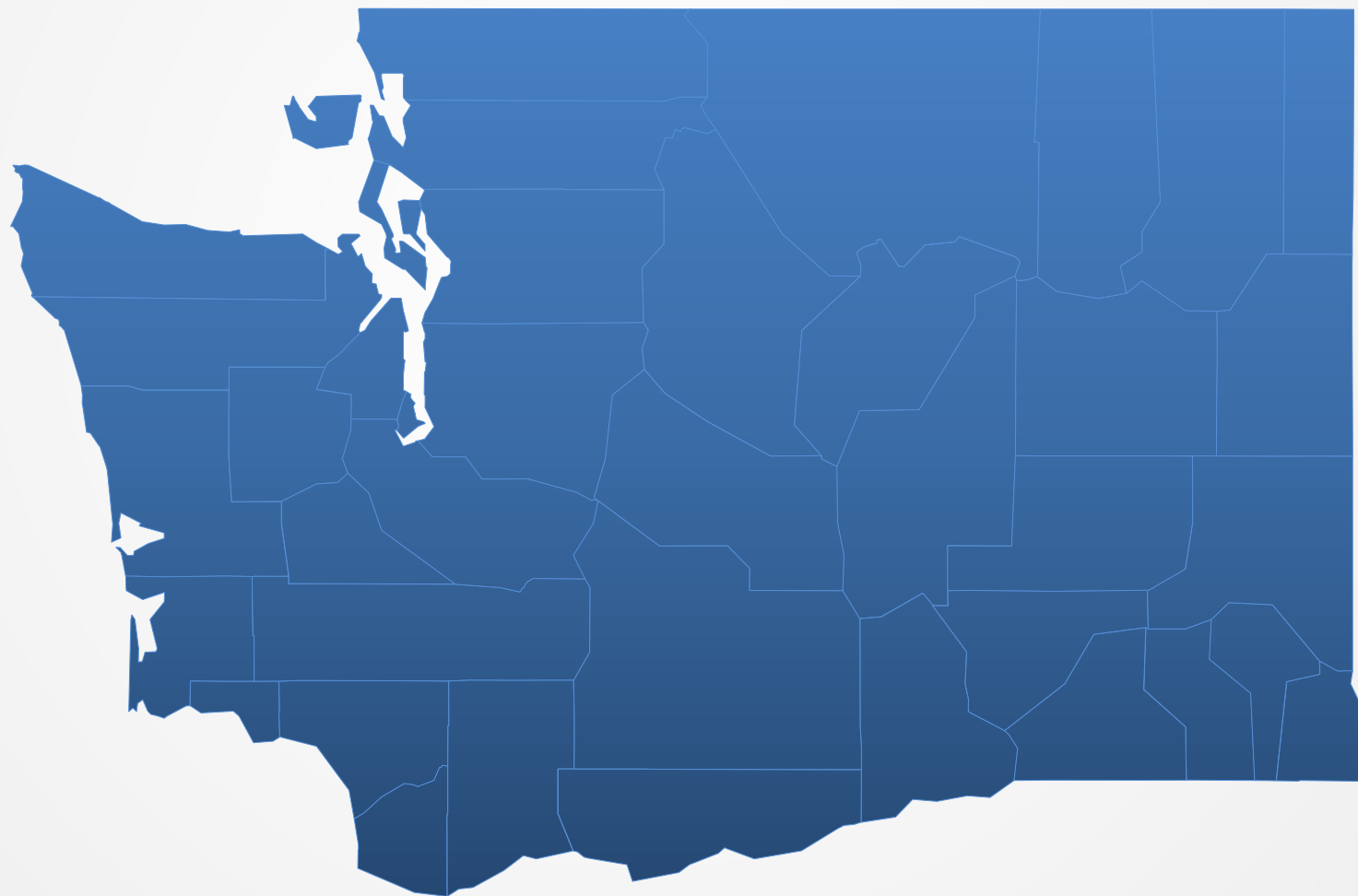


# Traumatic Brain Injury Strategic Partnership Advisory Council

## **TRAUMATIC BRAIN INJURY**

Strategic Partnership Advisory Council  
of Washington State





# Traumatic Brain Injury Strategic Partnership Advisory Council

## Mission Statement (Art. II Bylaws)

The mission of the **TBI Council of Washington** is to advise and work in collaboration with the **Department of Social and Health Services (DSHS)** and other stakeholders to advise the **Governor**, the **Legislature** and the **Secretary of the Department of Social and Health Services** on the best ways to create and provide an array of coordinated, accessible services and supports which promote optimal quality of life for all individuals that have been impacted by a traumatic brain injury, including their families.

# Traumatic Brain Injury Strategic Partnership Advisory Council

## TBI Council Meeting Norms

- Respectfully engage and listen to discussions by allowing one member to speak at a time
- Address differences in opinion in a thoughtful and respectful manner
- Disclose any potential conflicts of interest that pertain to decisions made by the Council
- Adhere to meeting agenda timeframes and refrain from disrupting Council meetings
- Any accommodations for clarity or support among Council Members will be acknowledged and addressed
- Provide your Name, each time you are speaking
- Quorum - Over 50% of those assigned present



# Traumatic Brain Injury Strategic Partnership Advisory Council

## **Approval of Meeting Minutes**



# Traumatic Brain Injury Strategic Partnership Advisory Council

## Council Report

# Traumatic Brain Injury Strategic Partnership Advisory Council

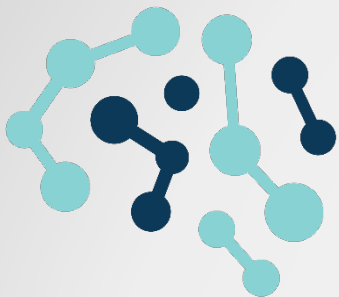


The Palouse



# Traumatic Brain Injury Strategic Partnership Advisory Council

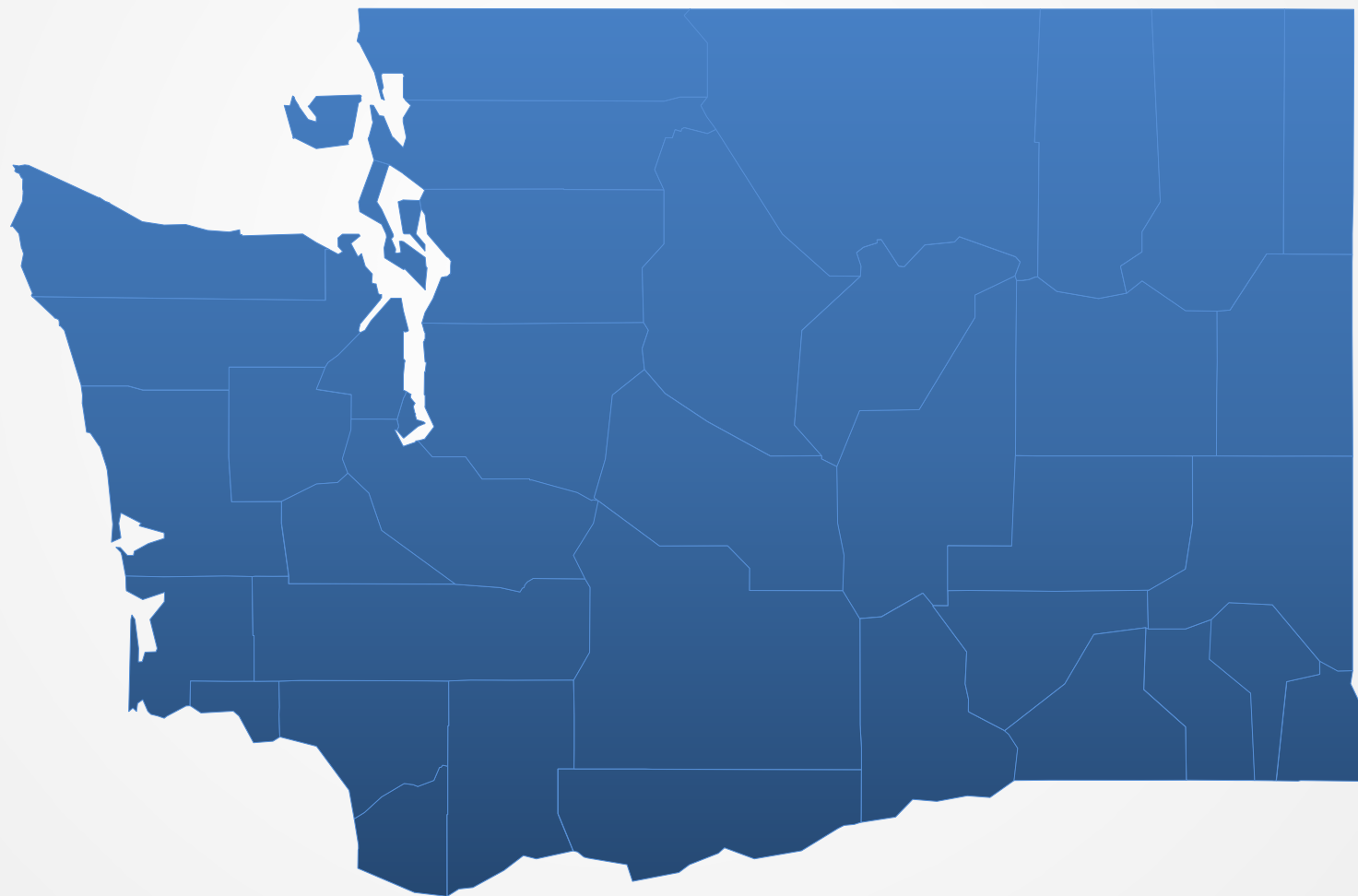
## **Equity and Belonging Review and Usage**



# Traumatic Brain Injury Strategic Partnership Advisory Council

## **TRAUMATIC BRAIN INJURY**

Strategic Partnership Advisory Council  
of Washington State





# Traumatic Brain Injury Strategic Partnership Advisory Council

## **Council Report 5 October 2023**



# Traumatic Brain Injury Strategic Partnership Advisory Council

## Revenue Collection / Expenditures SFY 2024

### **Collection:**

\$299,780 – Total Collected

### **Expenditure:**

\$1,723,259 – Budgeted

\$52,000 est. – Total Paid SFY 2024

### **Reserve Balance:**

\$600K Minimum Balance  
(Subject to Change)



# Traumatic Brain Injury Strategic Partnership Advisory Council

## TRAUMATIC BRAIN INJURY (TBI) FUND - SFY 2024 (July 1, 2023 - June 30, 2024)

Activity	Budgeted	Expenditures SFY24 YTD	Budget Balance
<b>DSHS / TBI Council</b>	<b>\$365,000</b>		<b>\$365,000</b>
DSHS Staffing / Indirect	\$340,000		\$340,000
Travel - Staff - Council - DSHS / Materials	\$25,000		\$25,000
<b>TBI Support</b>	<b>\$544,959</b>		<b>\$544,959</b>
TBI I&R Services - WA 211 - 2213-45112-01	\$ 169,874.00		\$169,874
TBI Pilot Navigation and Support - WA211 - 2213-45108-01	\$ 92,829.00		\$92,829
TBI VSG Infrastructure - Support Groups Central 2131-24358	\$ 9,456.00		\$9,456
TBI VSG Facilitation - McHaney Enterprises 2231-42860	\$ 36,800.00		\$36,800
Service Alternatives (CDR) - 2334 - 50166	\$ 161,000.00		\$161,000
Department of Corrections - 2061-97892-1	\$ 75,000.00		\$75,000
<b>Public Awareness / Training / Events / Projects / Other</b>	<b>\$ 813,300.00</b>		<b>\$813,300</b>
Public Awareness / Education / DES / Printing / NWD	\$ 150,000.00		\$150,000
DOH - Safe Kids and Traffic Safety Gardens - 2361-47354	\$ 150,000.00		\$150,000
UO - Workshop and Education Programs - 2265-42070-1	\$ 192,500.00		\$192,500
UO - Research Survey Study - 2165-31707-1	\$ 151,800.00		\$151,800
City of Tacoma - Safe Routes - 2264-43623	\$ 42,500.00		\$42,500
UW - TBI BH Echo Training - 2265-43608	\$ 126,500.00		\$126,500
<b>Grand total</b>	<b>\$ 1,723,259.00</b>	<b>\$0</b>	<b>\$1,723,259</b>



# Traumatic Brain Injury Strategic Partnership Advisory Council

## **I&R (Information and Referral) Data - SFY 2024**

**Inquirers – 6,223**

**TBI Screened – 3,303**

**Enhanced I&R – 2,920**

**Referrals and Agencies – 25,775 / 2,600**

**Pilot Navigation Support – Current / Total – 2 / 6**

**Most Requested Assistance –  
Housing / Government Assistance / Food / Utilities / Healthcare**

# Traumatic Brain Injury Strategic Partnership Advisory Council

## CORNERSTONE FRAMEWORK

BUILD COMMITMENT and  
RESPONSIVENESS WITHIN  
GOVERNANCE INSTITUTIONS  
and LEADERSHIP

● INSTITUTIONAL  
AWARENESS  
and CAPACITY

● STRATEGIC  
PARTNERSHIP  
and ADVISEMENT

ENGAGE IN PARTNERSHIPS and  
LEARNING TO PROMOTE EQUITY,  
BELONGING, and POSITIVE COMMUNITY  
NORMS FOR INJURY and VIOLENCE  
PREVENTION

● PROFESSIONAL  
DEVELOPMENT and  
WORKFORCE TRANSFORMATION

● COMMUNITY-BASED  
SUPPORT and RESILIENCE

EXPAND LEARNING OPPORTUNITIES  
FOR STUDENTS, WORKFORCES,  
CAREGIVERS, and COMMUNITIES

EQUITY and BELONGING

INCREASE AWARENESS,  
PREVENTION, RECOVERY, and  
RESILIENCE AROUND TBI, INJURY  
and VIOLENCE, and ACCESS TO  
RESOURCES



# Traumatic Brain Injury Strategic Partnership Advisory Council

## **Cornerstones of Comprehensive Plan**

### **Institutional Awareness and Capacity**

Build commitment and responsiveness within governance institutions and leadership

### **Strategic Partnerships and Advisement**

Engage in partnerships and learning to promote equity, belonging, and positive community norms for injury and violence prevention

### **Professional Development and Workforce Transformation**

Expand learning opportunities for students, workforces, caregivers, and communities

### **Community-Based Support and Resilience**

Increase awareness, prevention, recovery, and resilience around TBI, injury and violence, and access to resources



Traumatic Brain Injury Strategic Partnership Advisory Council

# **Harassment Policy Review**

**DSHS Administrative No 18.66 (Updated 2/2023)**

**Includes Employees and Council Members**

**Safe / Free / Protected**

**Reporting**

**TBI Team or Exec Committee**



# Traumatic Brain Injury Strategic Partnership Advisory Council

## Questions

# TBI EQUITY & BELONGING

Created for/by

Traumatic Brain Injury Strategic Partnership Advisory Council of Washington State

The very nature of having experienced a Traumatic Brain Injury (TBI) can put an individual or support system in a position of exclusion and inequity.

## The TBI Advisory Council is committed to:

- Outreach and awareness strategies for all abilities
- Build and strengthen support systems
- Connect people to the services they need
- Advocate for systemic improvements



### **TRAUMATIC BRAIN INJURY**

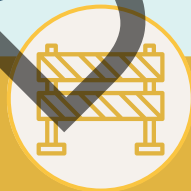
Strategic Partnership Advisory Council  
of Washington State

# TBI EQUITY



## INCLUSION

Who has been historically marginalized or excluded?



## BARRIERS

How will you lower and/or remove barriers to access?



## NEEDS/GAPS

What are the needs and gaps in services?



## PARTNERS

Which relational partners provide opportunities for systemic change?

Use this framework to consider how partnerships foster equity and belonging for those experiencing TBI.

# EQUITY & BELONGING CONSIDERATIONS

Examples of equity and belonging to consider for those experiencing TBI.



## INCLUSION

- ☐ Make a list of all historically marginalized groups who've been excluded?
- ☐ In what ways are you being inclusive and accessible to all?



## BARRIERS

- ☐ Identify barriers that prevent or limit access to TBI resources, services, programming - language, geography, financial, etc.
- ☐ What strategies can you use to lower or remove barriers?



## NEEDS/GAPS

- ☐ Identify unmet service needs (both current and future) for those experiencing a TBI.
- ☐ What service and/or system gaps exist and what strategies can you use to close or minimize those gaps?



## PARTNERS

- ☐ Make a list of who will you relationally partner with for community outreach and engagement?
- ☐ In what ways can partnerships facilitate systemic improvements and create meaningful change?



## EVALUATE

- How will you measure and quantify improvement or progress?

## TBI & EQUITY RESOURCES

Use existing equity tools and resources at federal and state levels to aid in applying a TBI-specific lens.

- [Washington State Office of Equity](#)
- [Washington Pro-Equity Anti-Racism \(PEAR\) Plan & Playbook](#)
- [Health Disparities in TBI & Concussion \(CDC\)](#)
- [Race Equity and Brain Injury \(NCAPPS\)](#)
- [WA211](#)

## Making Data-Driven Decisions

Use data to make informed decisions and improve equity and accessibility.

- [TBI Comprehensive Statewide Plan](#)
- [WA211 Counts Community Data](#)
- [CDC Health Equity Data](#)

