

Supporting Sustainable Recovery, Independence, and Wellness: 2017 Behavioral Health Administration Data Fact Sheet

Department of Social Health Services (DSHS) and Behavioral Health Administration (BHA) funds and oversees quality behavioral health services in support of DSHS' mission to [transform lives](#). BHA employs 3,465 teammates to provide patients with the care they need in the most appropriate setting. This fact sheet reports data covering the breadth of services BHA provided to clients in **State Fiscal Year (SFY) 2017** across the continuum of care from community locations to state hospitals.

Expenditures¹

Total BHA expenditures in SFY 2017: approximately **\$1.510** billion distributed as follows:

- Community Mental Health (MH): **\$848.07** million.
- Community Substance Use Disorder (SUD) treatment: **\$313.69** million.
- State Psychiatric Hospitals: **\$348.97** million.

Clients Served²

More than **225,000** clients received BHA mental health (MH) and substance use disorder (SUD) treatment services. Approximately:

- **179,500** received MH services.
- **47,000** received SUD treatment services.
- **2,800** received treatment services in WA's three state psychiatric hospitals.
- **144,000 adults** and **49,000 children** were Medicaid eligible.³
- **27,000 adults** and **3,500 children** were non-Medicaid eligible.³

Community-based Services^{2,4}

<i>Mental Health</i>	<i>Crisis</i>	<i>Outpatient</i>	<i>Inpatient</i>	<i>Detox</i>
Adult	29,300	116,600	9,800	N/A
Youth	7,000	46,700	1,350	N/A
<i>SUD</i>	<i>Outpatient</i>	<i>Residential</i>	<i>Opiate Substitution Treatment</i>	<i>Detox</i>
Adult	33,300	7,350	9,310	4880
Youth	2,690	450	N/A	30

SUD Prevention²

BHA's total expenditures for SFY 2017 include **\$10.796** million for Community SUD Prevention & MH Promotion/Suicide Prevention services. Through this programming:

- More than **16,137** Washingtonians received SUD prevention services.
- Of this, **77** percent participated in Evidence Based Programs (EBPs).

Page 1 Notes:

¹Does not include administrative expenditures.

²Figures rounded for ease of presentation.

³This reflects "ever received services while Medicaid eligible during the FY". Because Medicaid eligibility may change from month to month, clients may also be counted as "non-Medicaid eligible" during the FY.

⁴Community based residential services include those in Community Hospital and E&T. Assessment services are not included in mental health or SUD in AI/AN.

*Data suppressed as client count is less than 10.

Recovery, Engagement, and Outreach Services

More than **16,000** clients received DBHR’s Recovery Support, Engagement, and Outreach Services. Of these clients, approximately:

- **850** received Housing and Recovery through Peer Services (HARPS).
- **180** clients received Supported Employment services at three grant-funded sites.
- **1,100** clients received SUD Access to Recovery services.
- **350 peers** and **150 parents** and **youth** received Certified Peer Counseling (CPC) training through the Peer Support Program.
- Over **4,000 homeless individuals** received outreach services through the Projects for Assistance in Transition from Homelessness¹ (PATH) in conjunction with BRIDGES.

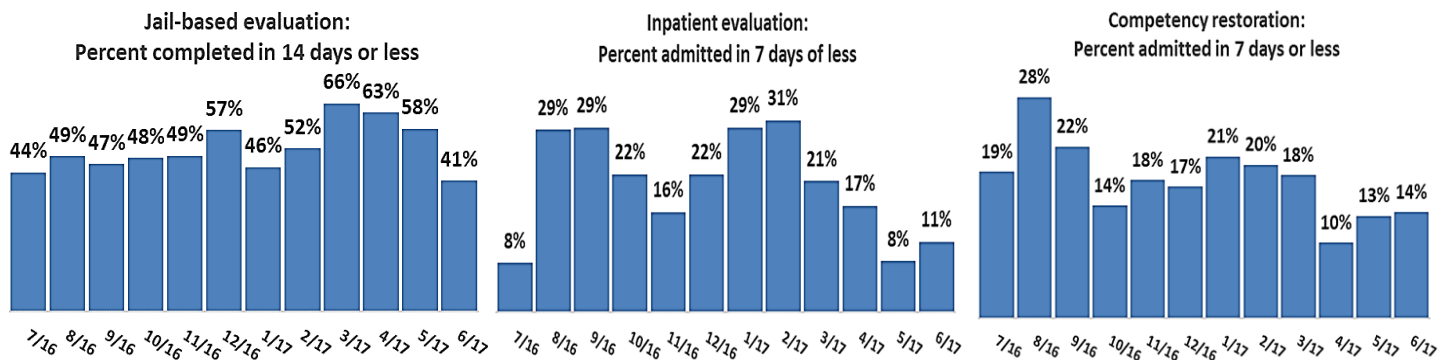
Client Satisfaction²

- Behavioral health services received a positive general satisfaction rating from **83 percent of adult** substance use disorder (SUD) treatment clients and **89 percent of the combined youth and family** SUD treatment clients.
- In 2017, Behavioral health services received a positive general satisfaction rating from **82 percent of adult** mental health (MH) consumers, **84 percent of youth** MH, and **86 percent of family** MH consumers.

Clients Served by State Hospital Facilities

Facility	Number of Patients ³		Annual (SFY) Average Daily Census ³		Annual (SFY) Average Length of Stay (days) ⁴		SFY Funded Capacity (beds)		Annual (SFY) Average Occupancy Rate ⁵	Discharged to Outpatient Services ⁶
	Civil	Forensic	Civil	Forensic	Civil	Forensic	Civil	Forensic	Hospital-wide	Civil only
Eastern State Hospital	510	394	173	110	138	236	192	125	89percent	70.9percent
Western State Hospital	999	960	547	275	575	174	557	285	96percent	52.4percent
Child Study & Treatment Center	89	N/A	42	N/A	357	N/A	47	N/A	95percent	46.8percent

Forensic Evaluation and Competency Services⁷



Page 2 Notes:

¹Data for PATH covers the Federal Fiscal Year from October 1, 2016—September 30, 2017.

²Data are based on the recently concluded 2017 Behavioral Health Enrollee Survey, a collaboration between the Division of Behavioral Health and Recovery (DBHR) and the Social and Economic Sciences Research Center (SESRC) at the Washington State University. Reports are currently being prepared.

³Data on services provided at the three state hospitals cover SFY 2017. Civil/Forensic in this table refers to patient’s legal status at admission. Legal status may change during a patient’s stay. Civil / Forensic status for clients served and average daily census is based on daily forensic status during the FY. Because clients may change Civil/Forensic status during the FY, the Civil/Forensic counts will not sum to the Total count of clients served during the FY.

⁴Average Length of Stay is calculated as the sum of IR/IT days between admission and discharge among clients discharged in the FY.

⁵Occupancy rate is calculated by dividing the number of patient/days used by the number of bed/days available (the Funded Capacity multiplied by 365) on the last day of the fiscal year.

⁶Discharged to Outpatient Services refers to patients admitted to non-crisis “routine” outpatient service within 7 days of discharge from the state hospital. As discharges is a count of all discharges, a client may be counted multiple times. Services include day support, family treatment, freestanding E&T, group treatment services, high intensity treatment, individual treatment, intake evaluation, jail services/community transition, medication management, medication monitoring, MH clubhouse, MH Residential setting, peer support, rehabilitation case management, stabilization services, supported employment, and therapeutic psychoeducation.

⁷Completions are calculated by the percentage of clients evaluated within 14 days of a court order signature for Jail-based evaluations, or admitted for Inpatient evaluation or Competency Restoration within 7 days of court order signature. Beginning in SFY 2017, the standard for Jail-based evaluation changed to 14 days or less from court order signature.