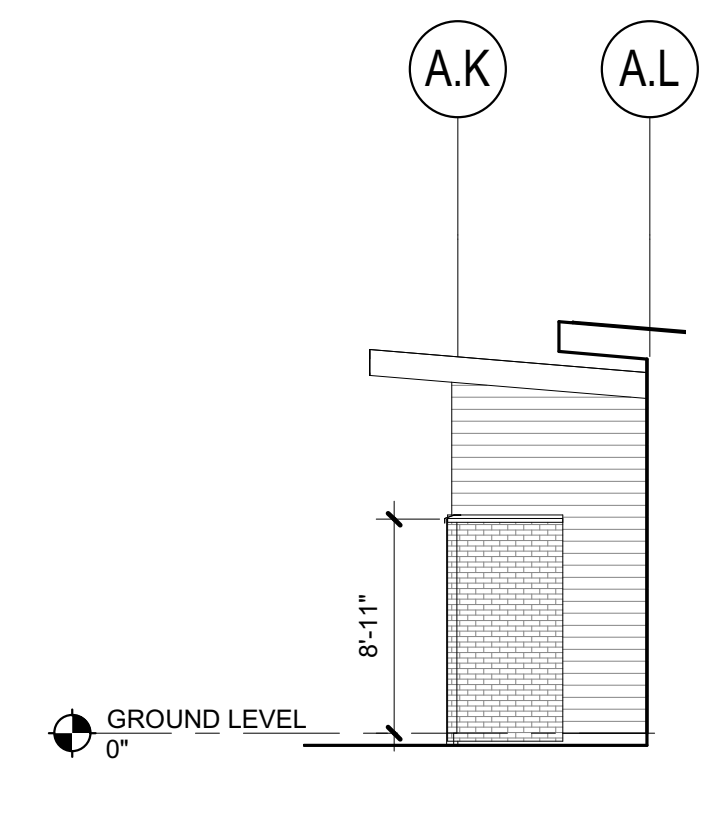
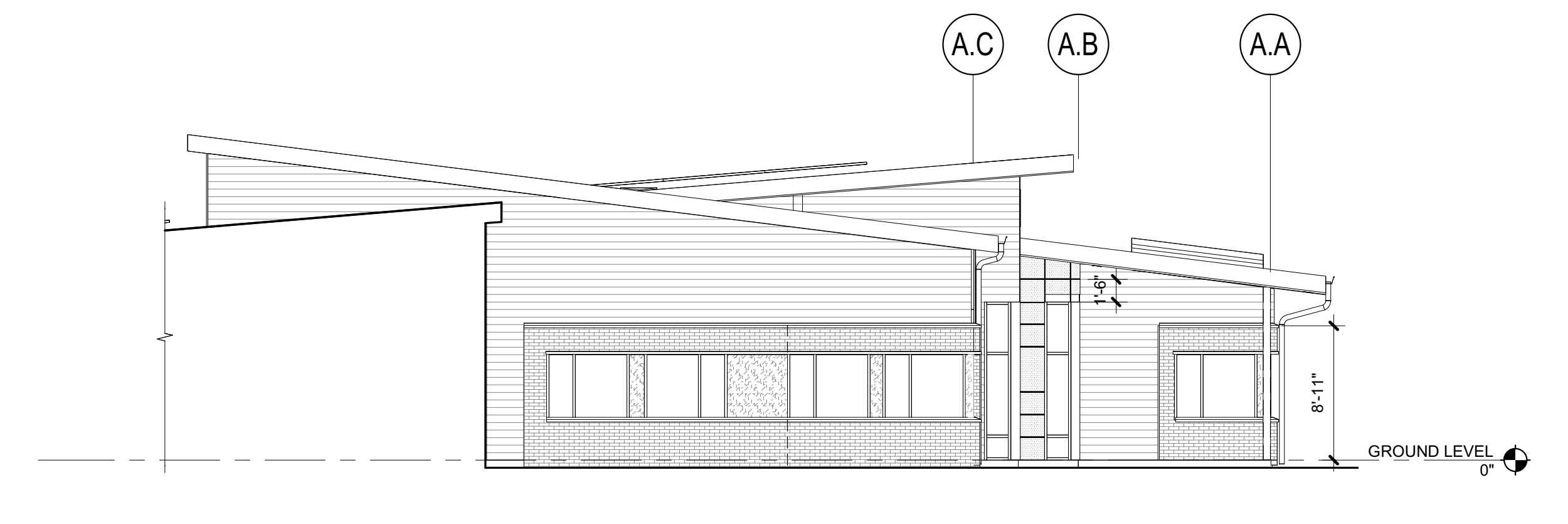


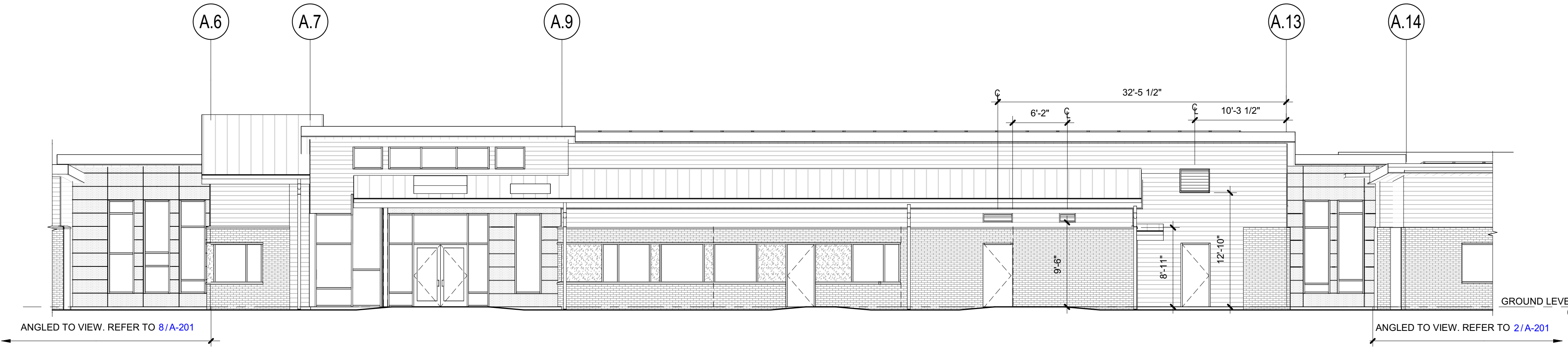
8 BUILDING ELEVATION - SOUTHWEST
 1/8" = 1'-0"



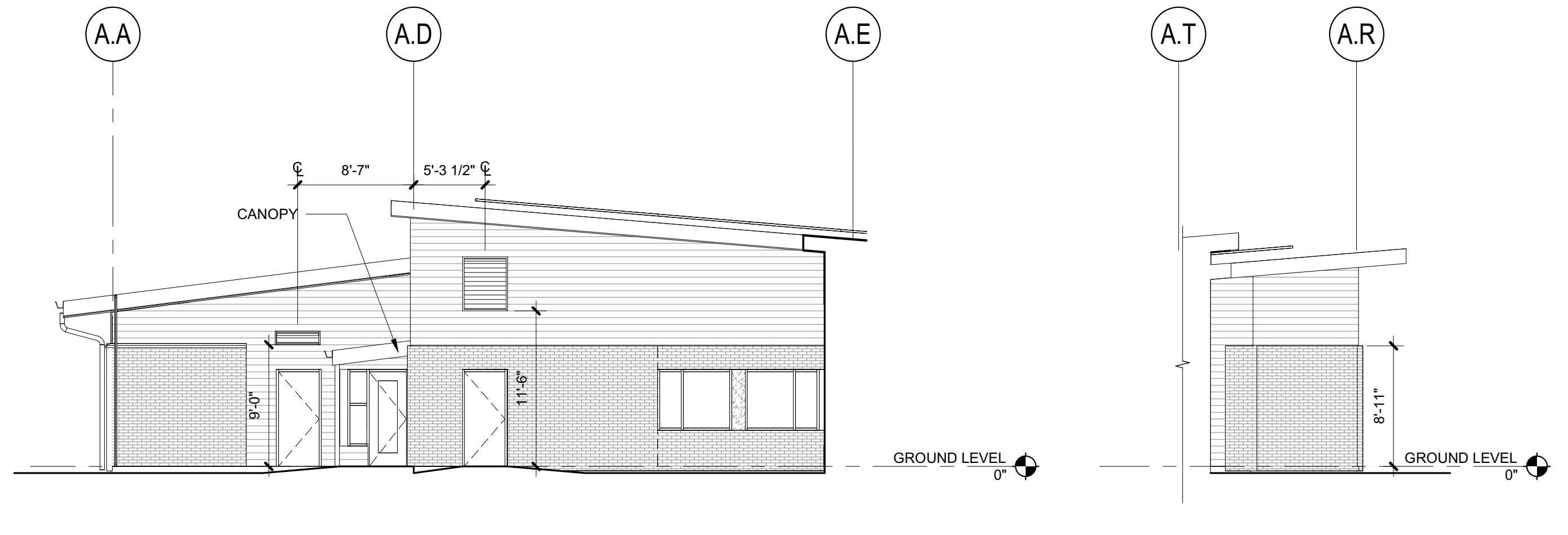
7 BUILDING ELEVATION - SOUTHEAST
 1/8" = 1'-0"



6 BUILDING ELEVATION - WEST
 1/8" = 1'-0"

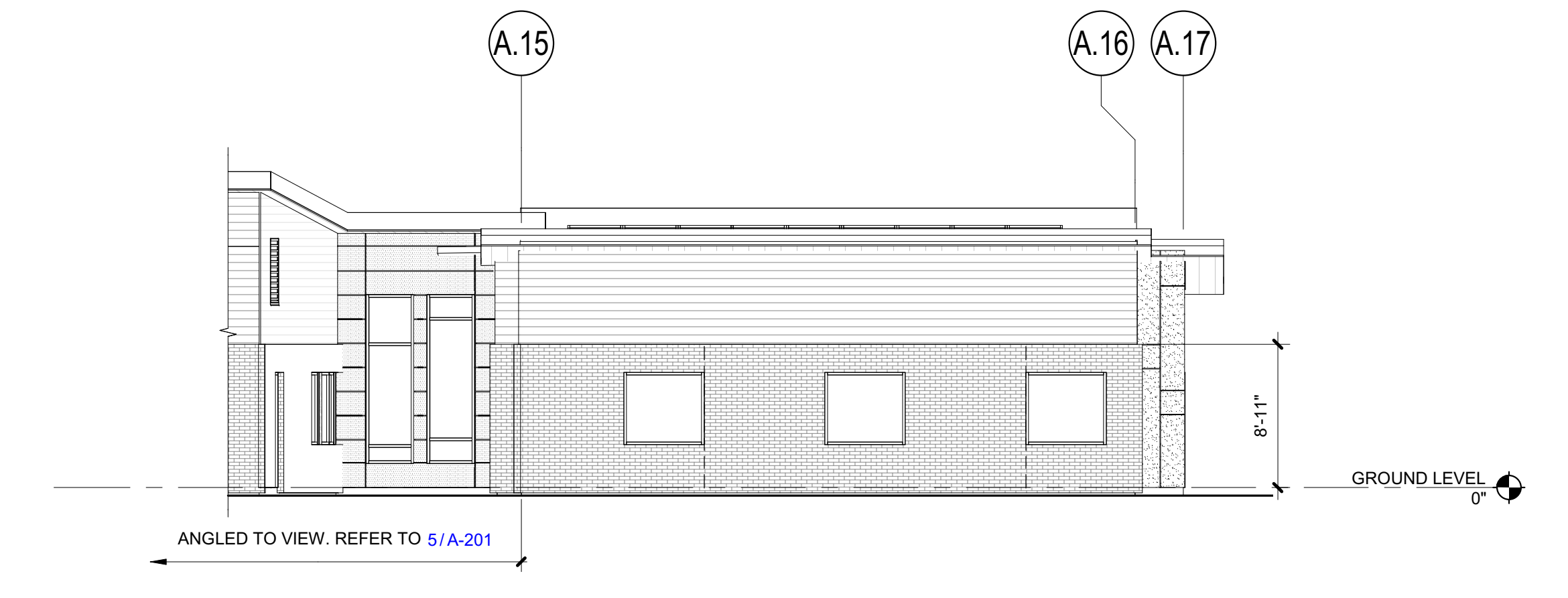


5 BUILDING ELEVATION - SOUTH
 1/8" = 1'-0"

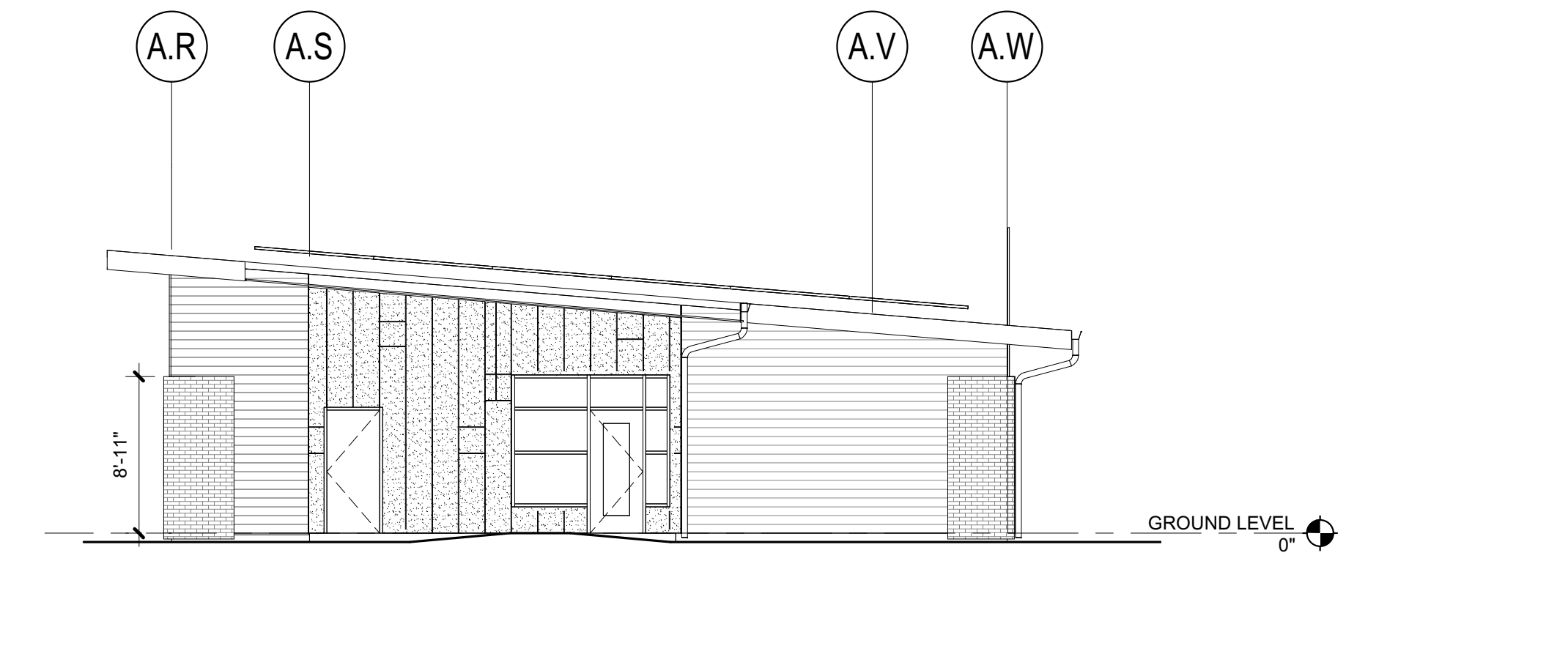


4 BUILDING ELEVATION - EAST
 1/8" = 1'-0"

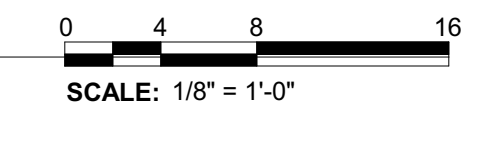
3 BUILDING ELEVATION - SOUTHWEST
 1/8" = 1'-0"



2 BUILDING ELEVATION - SOUTHEAST
 1/8" = 1'-0"



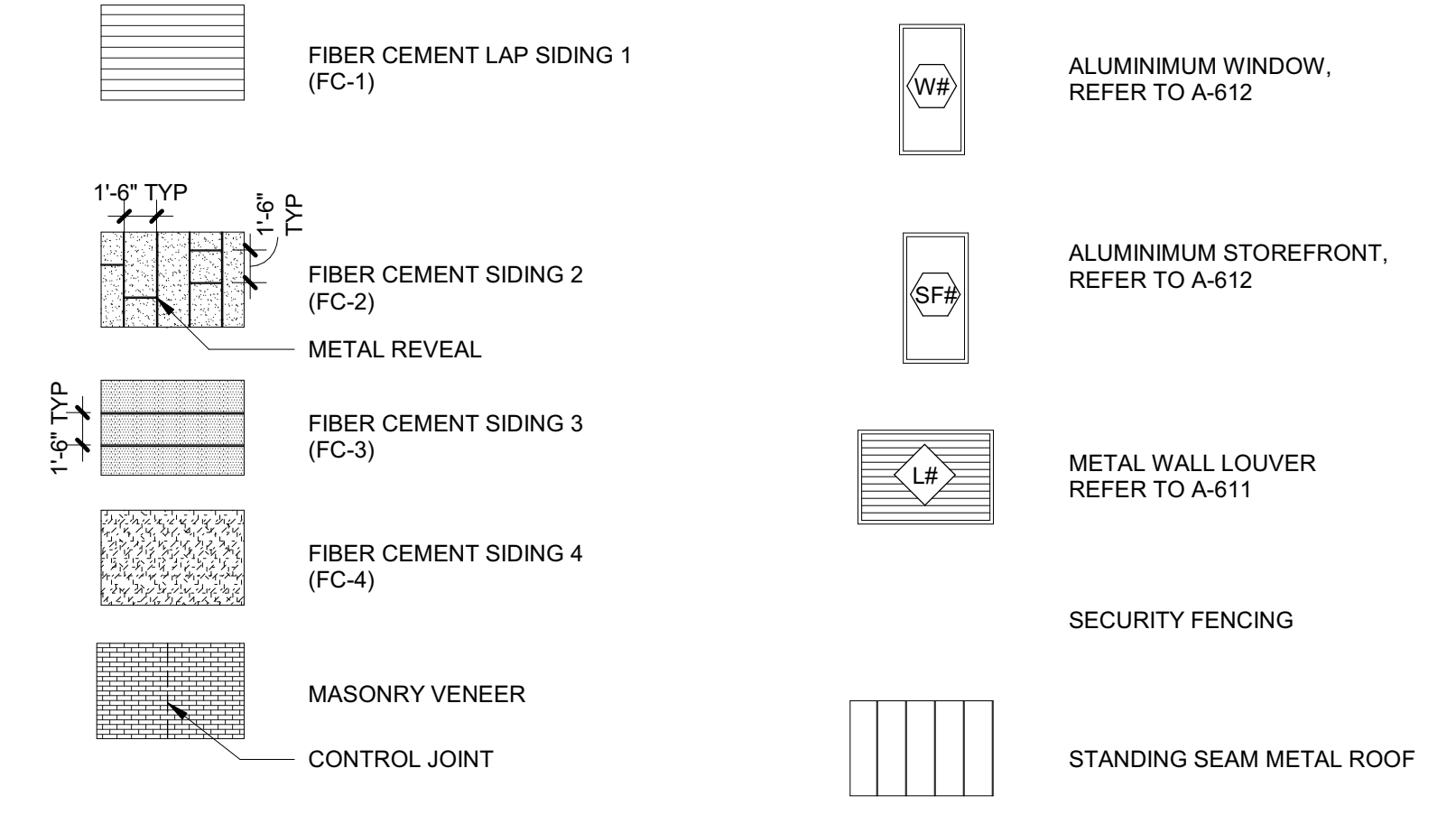
1 BUILDING ELEVATION - NORTHEAST
 1/8" = 1'-0"



EXTERIOR ELEVATION GENERAL NOTES

- REFER TO A-591 FOR TYPICAL SIDING AND TRANSITION DETAILS.
- REFER TO A-121 FOR STANDARD SHADING CONDITIONS.

EXTERIOR ELEVATION LEGEND

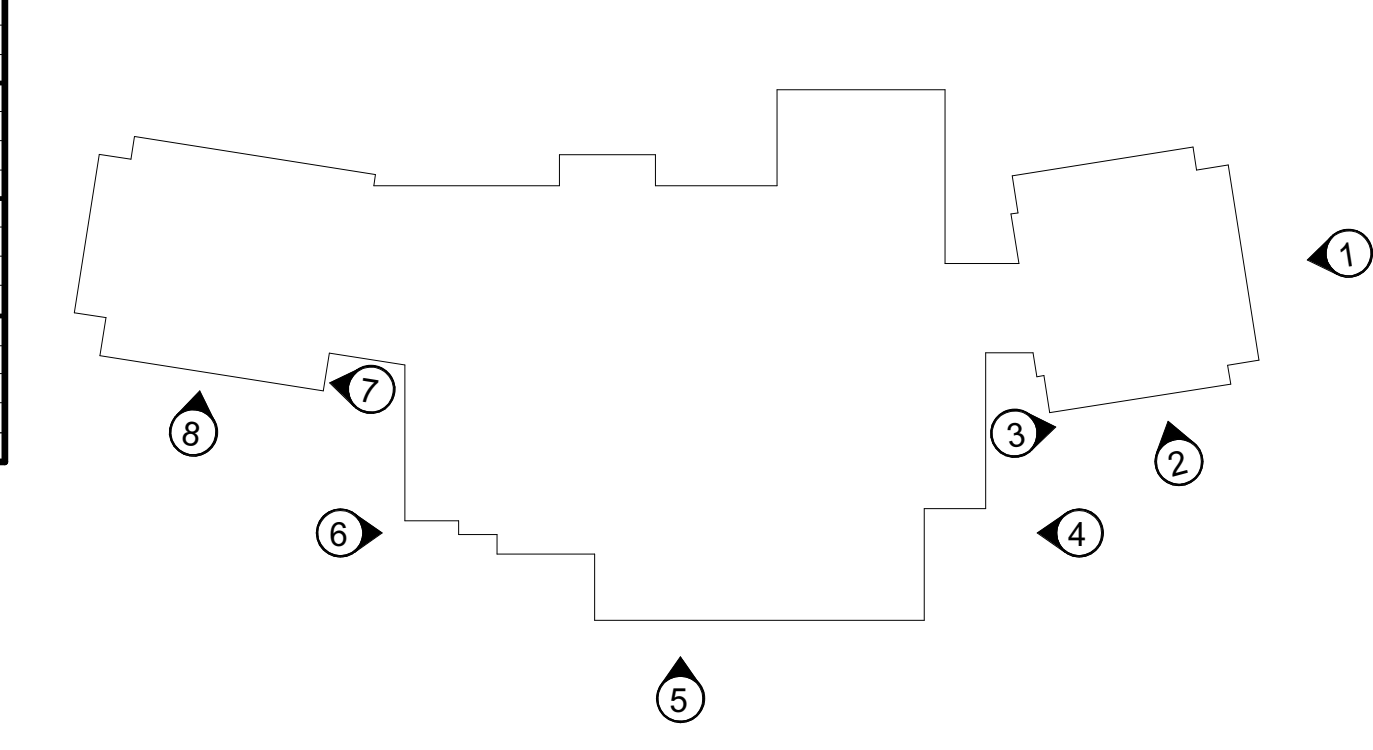


NOTE: REFER TO A-591 FOR DETAILS OF JOINTS WITHIN AND TRANSITIONS BETWEEN MATERIALS

EXTERIOR FINISH SCHEDULE

ITEM	MATERIAL	FINISH	REMARKS / COLOR
BRICK VENEER	CLAY BRICK	CLEAR SEALER	MUTUAL MATERIALS "FOREST BLEND"
CANOPY AT COVERED OUTDOOR - DOWNSPOUT	SHEET METAL	FACTORY FINISH	AEP "COOL MATTE BLACK"
CANOPY AT COVERED OUTDOOR - FLASHING	SHEET METAL	FACTORY FINISH	AEP "COOL MATTE BLACK"
CANOPY AT COVERED OUTDOOR - FRAMING	T&G WOOD	SEMI-TRANSPARENT STAIN	CLAR
CANOPY AT ENTRY - DOWNSPOUT	SHEET METAL	FACTORY FINISH	AEP "COOL MATTE BLACK"
CANOPY AT ENTRY - FLASHING	SHEET METAL	FACTORY FINISH	AEP "COOL MATTE BLACK"
CANOPY AT ENTRY - SOFFIT	T&G WOOD	CLEAR SEALANT	CLEAR
CANOPY AT ENTRY - STEEL COLUMN	STEEL	FIELD PAINT	SW 6528 "TRICORN BLACK"
CEMENTITIOUS SIDING 1 (FC-1)	FIBER CEMENT - LAP, 6" EXPOSURE	FACTORY FINISH	WOOD GRAIN, "CARIBOU TRAILS"
CEMENTITIOUS SIDING 2 (FC-2)	FIBER CEMENT PANEL	FACTORY FINISH	CERACLAD SMOOTH PANEL, "SAFFRON"
CEMENTITIOUS SIDING 3 (FC-3)	FIBER CEMENT PANEL	FACTORY FINISH	CERACLAD SMOOTH PANEL, "SAFFRON"
CEMENTITIOUS SIDING 4 (FC-4)	FIBER CEMENT PANEL	FIELD PAINT	HARDI SMOOTH PANEL PAINT TO MATCH "SAFFRON"
DOWNSPOUT	SHEET METAL	FACTORY FINISH	AEP "COOL MATTE BLACK"
ENCLOSURE SECURITY FENCING PANEL	STEEL	FACTORY FINISH	BLACK
FASCIA	SHEET METAL	FACTORY FINISH	AEP "COOL MATTE BLACK"
GUTTERS	SHEET METAL	FACTORY FINISH	AEP "COOL MATTE BLACK"
HOLLOW METAL - DOOR	HOLLOW METAL - PRIMED HOLLOW METAL	FIELD PAINT	SW 6528 "TRICORN BLACK"
HOLLOW METAL - FRAME	FACTORY PRIMED HOLLOW METAL	FIELD PAINT	SW 6528 "TRICORN BLACK"
HOLLOW METAL - ADJACENT FLASHING	SHEET METAL	FACTORY FINISH	AEP "COOL MATTE BLACK"
LIGHT FIXTURE	VARIABLES	FACTORY FINISH	REFER TO ELECTRICAL
LOUVER	ALUMINUM	FACTORY FINISH	MATCH ADJACENT WALL COLOR
LOUVER - ADJACENT FLASHING	SHEET METAL	FACTORY FINISH	MATCH ADJACENT WALL COLOR
SKYLIGHT FRAME	ALUMINUM	FACTORY FINISH	TBD
SOFFIT	PERFORATED METAL	FACTORY FINISH	AEP "COOL REGAL WHITE"
STOREFRONT WINDOW - ADJACENT FLASHING	SHEET METAL	FACTORY FINISH	MATCH STOREFRONT COLOR
STOREFRONT WINDOW - ADJACENT BRAKE SHAPE	ALUMINUM	FACTORY FINISH	MATCH STOREFRONT COLOR
STOREFRONT WINDOW - FRAME	ALUMINUM	FACTORY FINISH	BLACK ANODIZED
STANDING SEAM METAL ROOFING	SHEET METAL	FACTORY FINISH	AEP "COOL OLD TOWN GRAY"
STANDING SEAM ROOF - ADJACENT FLASHING	SHEET METAL	FACTORY FINISH	AEP "COOL OLD TOWN GRAY"

KEY PLAN



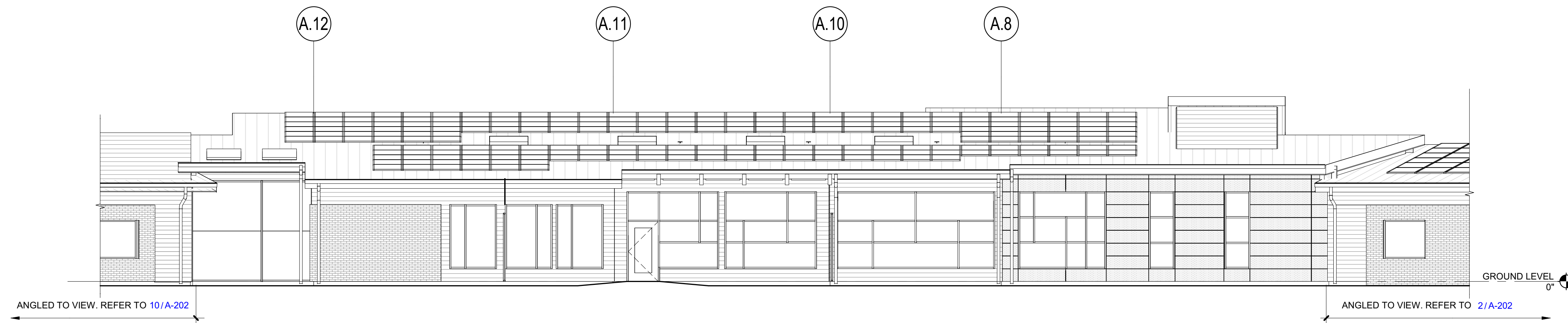
REVISIONS

NO.	DATE	DESCRIPTION

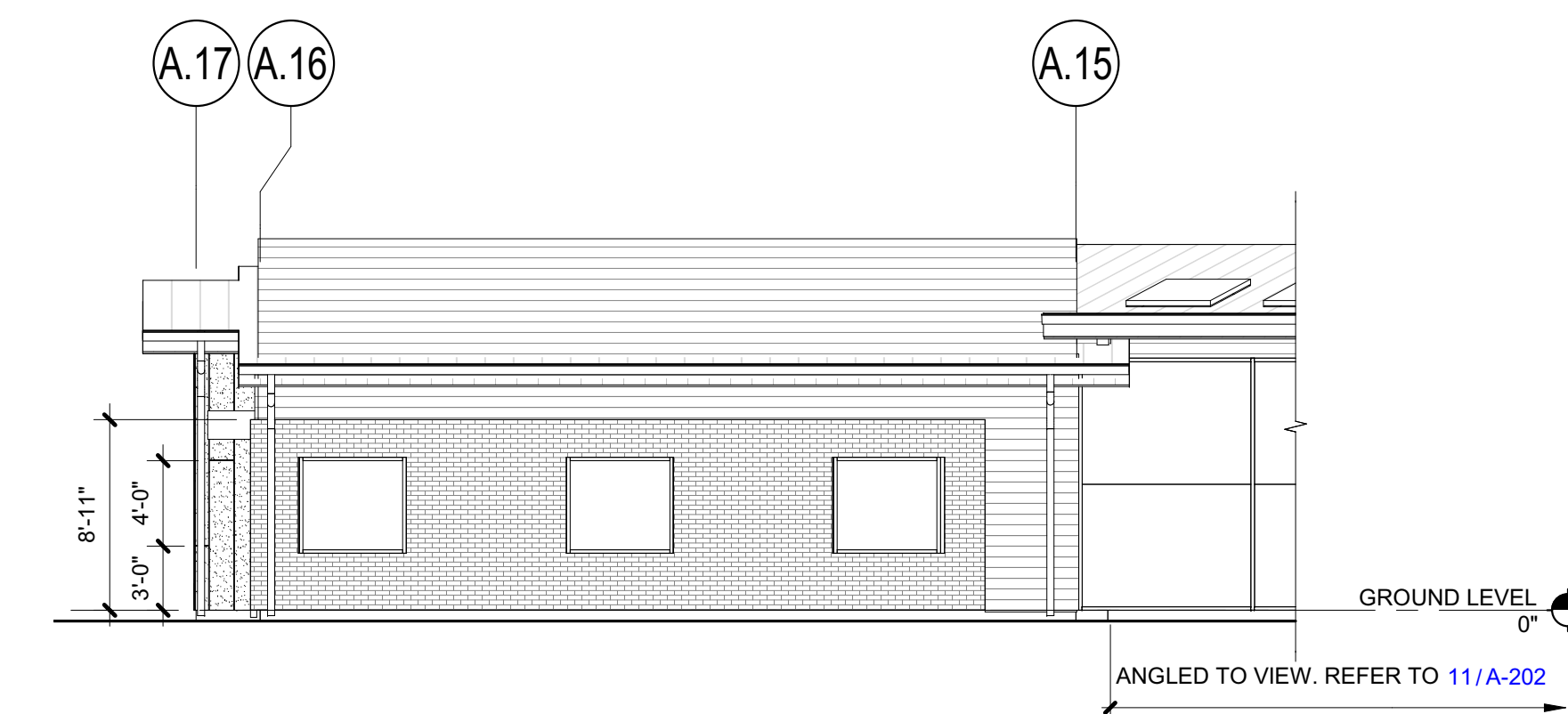
DATE: 6.18.2021
 BSN: 19093
 DRAWN BY: EG, MHR, WJ
 CHECKED BY: WJ

EXTERIOR ELEVATIONS

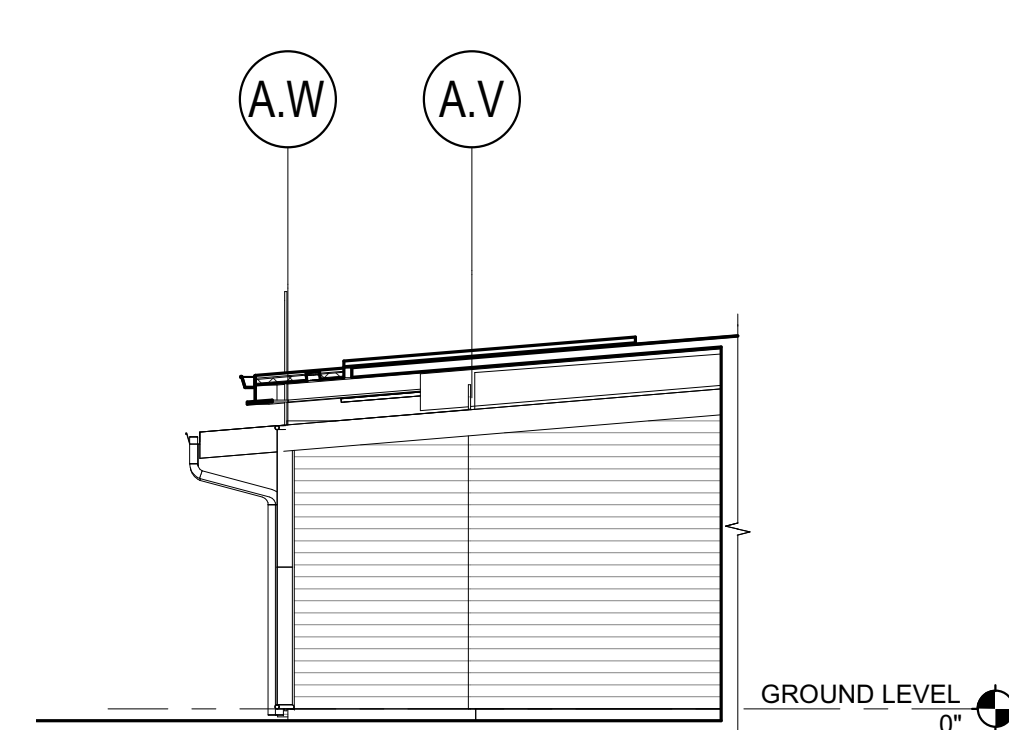
IF SHEET MEASURES LESS THAN 30"X42", IT IS A REDUCED PRINT. REDUCE SCALE ACCORDINGLY



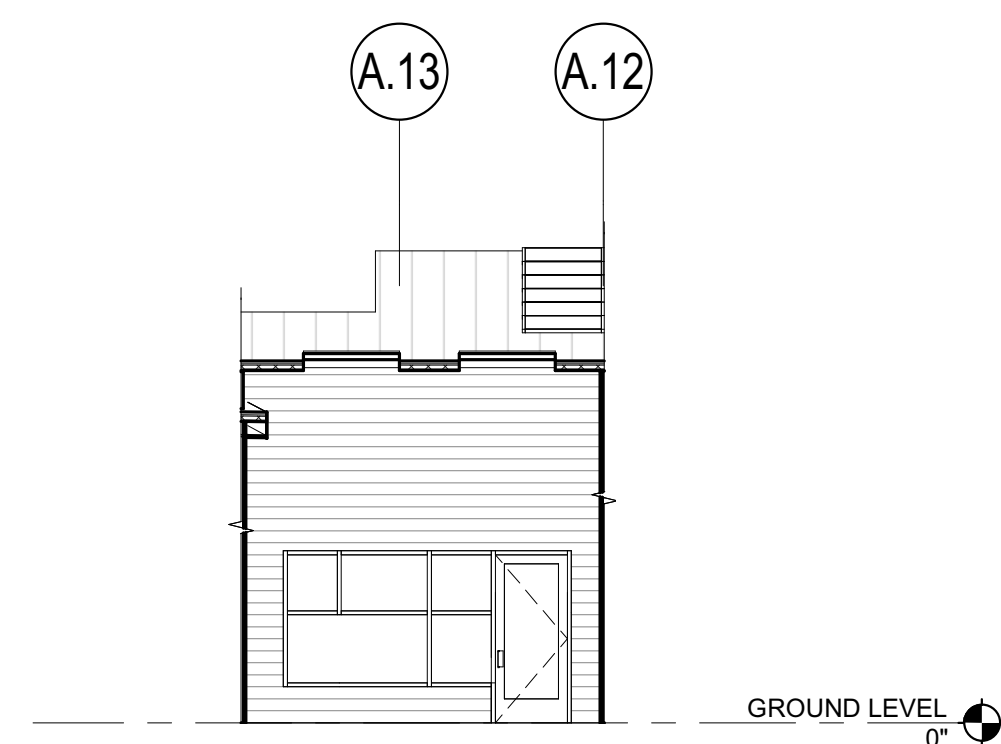
11 BUILDING ELEVATION - NORTH
1/8" = 1'-0"



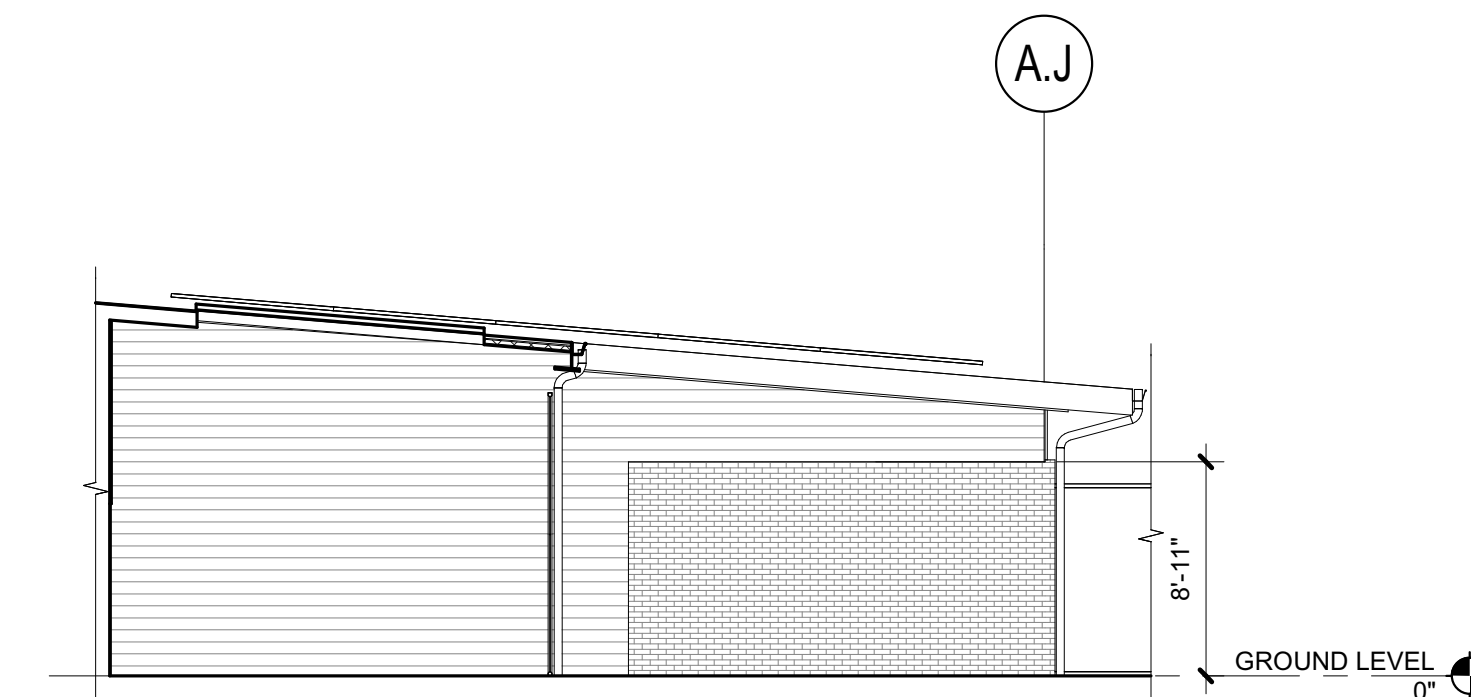
10 BUILDING ELEVATION - NORTHWEST
1/8" = 1'-0"



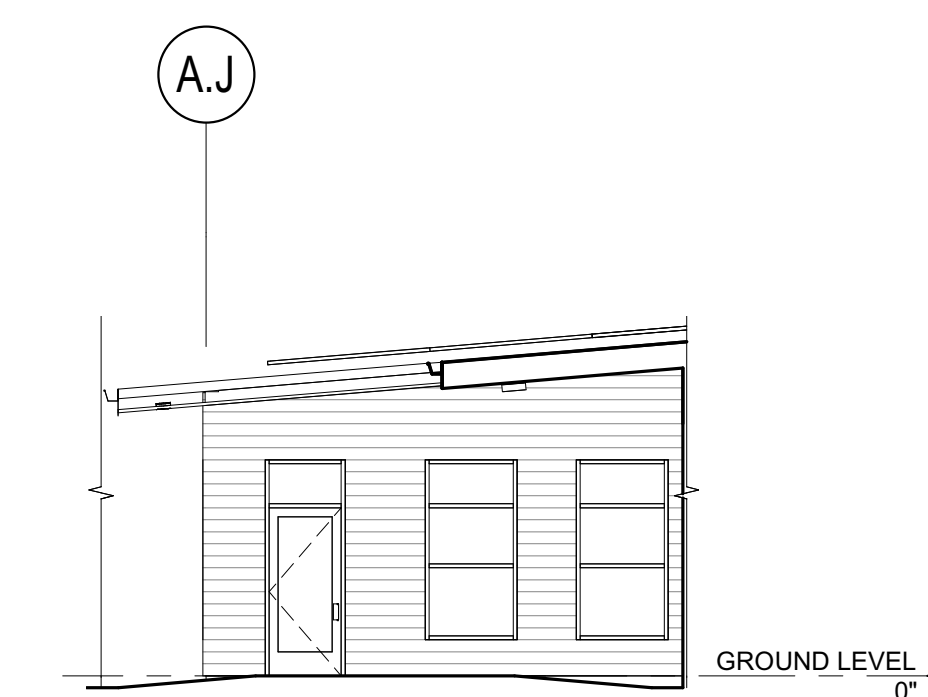
9 BUILDING ELEVATION - SOUTHWEST
1/8" = 1'-0"



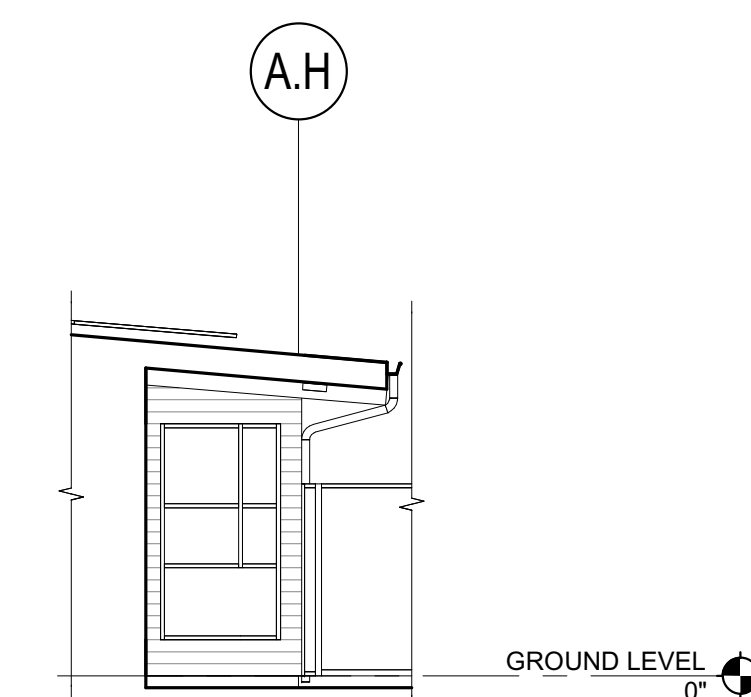
8 BUILDING ELEVATION - SOUTH
1/8" = 1'-0"



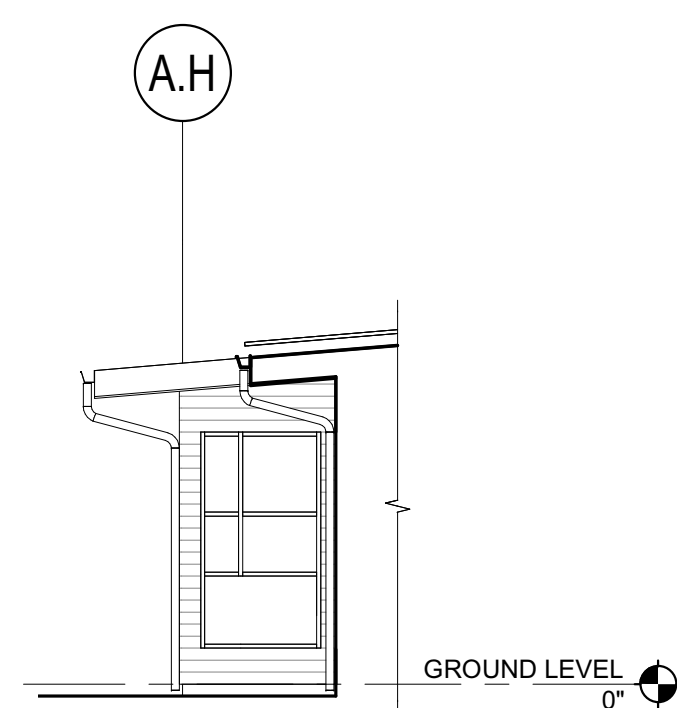
7 BUILDING ELEVATION - EAST
1/8" = 1'-0"



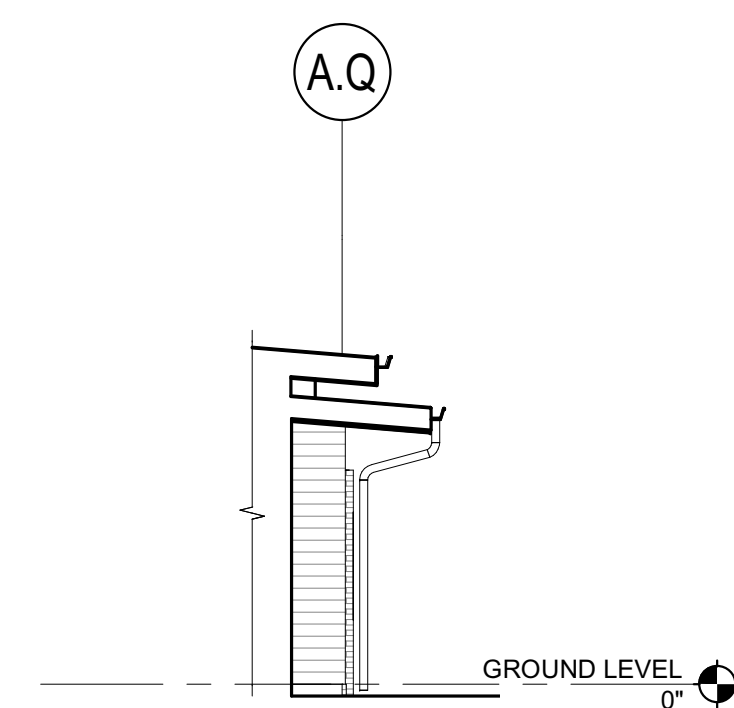
6 BUILDING ELEVATION - WEST
1/8" = 1'-0"



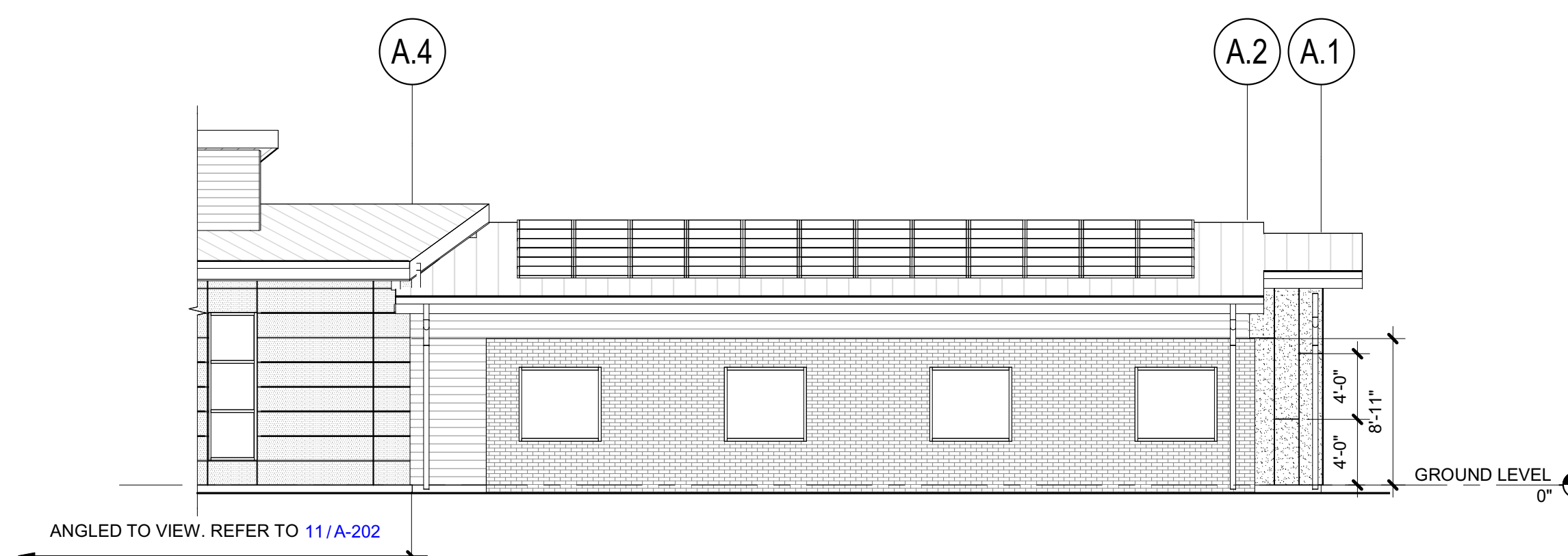
5 BUILDING ELEVATION - EAST
1/8" = 1'-0"



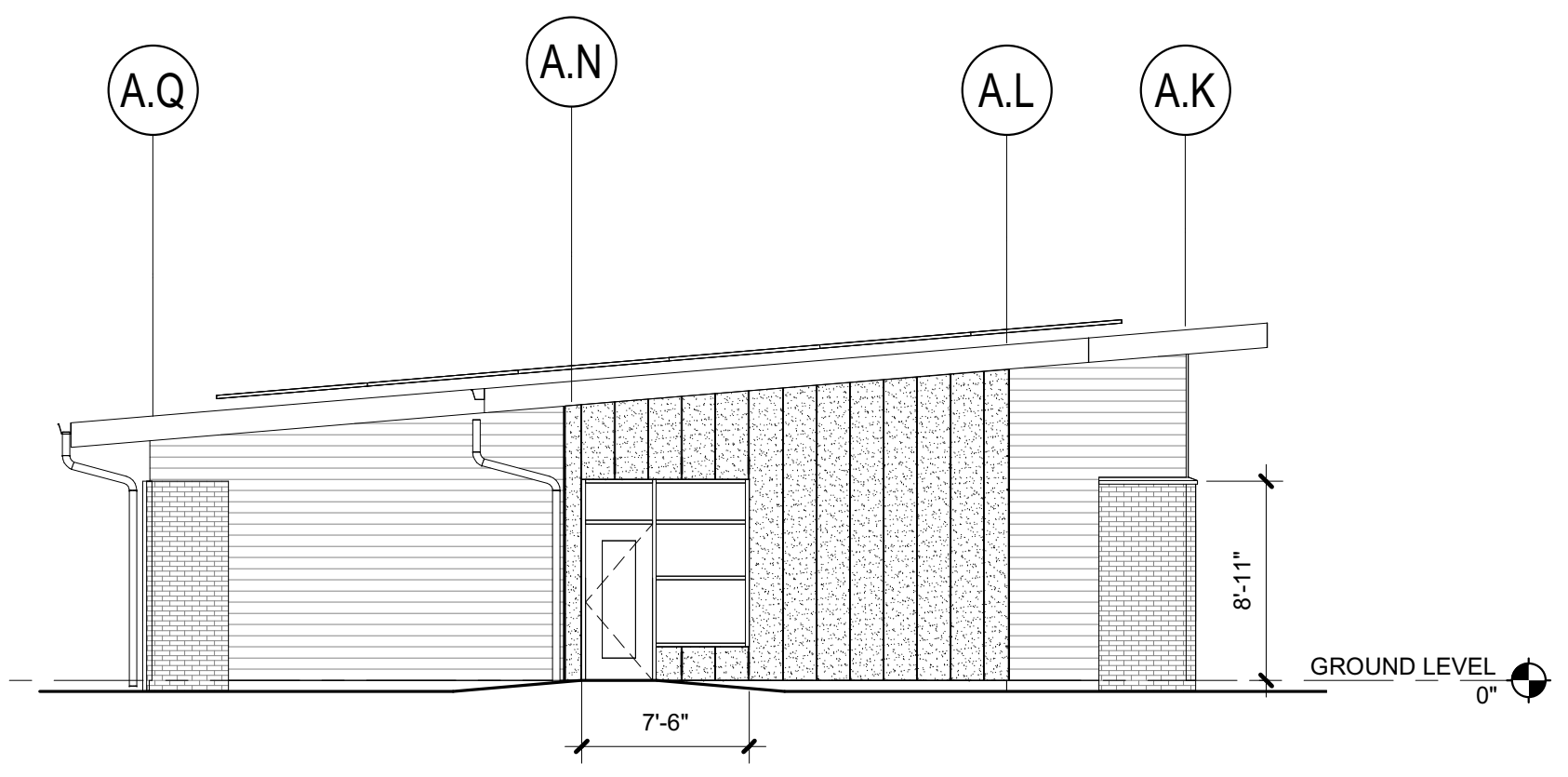
4 BUILDING ELEVATION - WEST
1/8" = 1'-0"



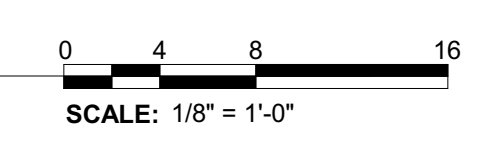
3 BUILDING ELEVATION - SOUTHEAST
1/8" = 1'-0"



2 BUILDING ELEVATION - NORTHEAST
1/8" = 1'-0"



1 BUILDING ELEVATION - NORTHWEST
1/8" = 1'-0"



EXTERIOR ELEVATION GENERAL NOTES

- REFER TO A-591 FOR TYPICAL SIDING AND TRANSITION DETAILS.
- REFER TO A-121 FOR STANDARD SHADING CONDITIONS.

EXTERIOR ELEVATION LEGEND

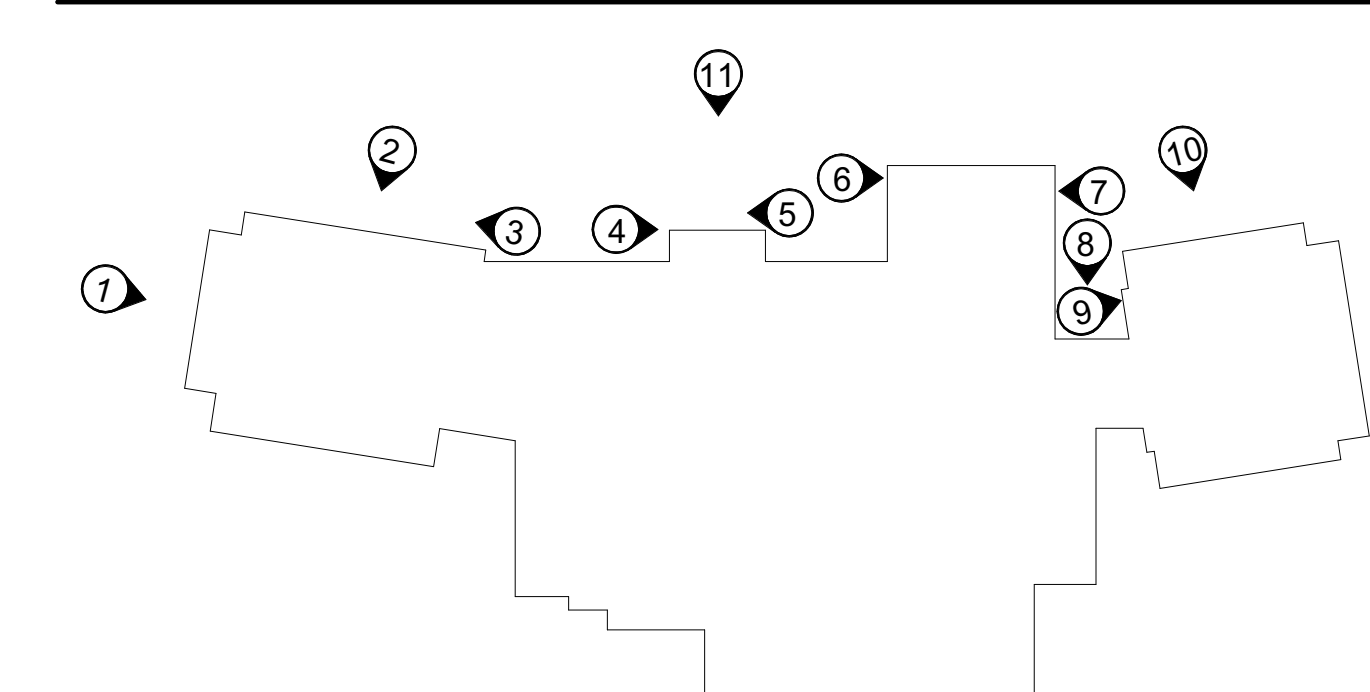
	FIBER CEMENT LAP SIDING 1 (FC-1)		ALUMINUM WINDOW, REFER TO A-612
	FIBER CEMENT SIDING 2 (FC-2)		ALUMINUM STOREFRONT, REFER TO A-612
	METAL REVEAL		METAL WALL LOUVER, REFER TO A-611
	FIBER CEMENT SIDING 3 (FC-3)		SECURITY FENCING
	FIBER CEMENT SIDING 4 (FC-4)		STANDING SEAM METAL ROOF
	MASONRY VENEER		
	CONTROL JOINT		

NOTE: REFER TO A-591 FOR DETAILS OF JOINTS WITHIN AND TRANSITIONS BETWEEN MATERIALS

EXTERIOR FINISH SCHEDULE

ITEM	MATERIAL	FINISH	REMARKS / COLOR
BRICK VENEER	CLAY BRICK	CLEAR SEALER	MUTUAL MATERIALS "FOREST BLEND"
CANOPY AT COVERED OUTDOOR- DOWNSPOUT	SHEET METAL	FACTORY FINISH	AEP 'COOL MATTE BLACK'
CANOPY AT COVERED OUTDOOR- FLASHING	SHEET METAL	FACTORY FINISH	AEP 'COOL MATTE BLACK'
CANOPY AT COVERED OUTDOOR- FRAMING	T&G WOOD	SEMI-TRANSPARENT STAIN	CLEAR
CANOPY AT ENTRY - DOWNSPOUT	SHEET METAL	FACTORY FINISH	AEP 'COOL MATTE BLACK'
CANOPY AT ENTRY - FLASHING	SHEET METAL	FACTORY FINISH	AEP 'COOL MATTE BLACK'
CANOPY AT ENTRY - SOFFIT	T&G WOOD	CLEAR SEALANT	CLEAR
CANOPY AT ENTRY - STEEL COLUMN	STEEL	FIELD PAINT	SW 6528 TRICORN BLACK
CEMENTITIOUS SIDING 1 (FC-1)	FIBER CEMENT - LAP, 6" EXPOSURE	FACTORY FINISH	WOOD GRAIN, "CARIBOU TRAILS"
CEMENTITIOUS SIDING 2 (FC-2)	FIBER CEMENT PANEL	FACTORY FINISH	CERACLAD SMOOTH PANEL, "SAFFRON"
CEMENTITIOUS SIDING 3 (FC-3)	FIBER CEMENT PANEL	FACTORY FINISH	CERACLAD SMOOTH PANEL, "SAFFRON"
CEMENTITIOUS SIDING 4 (FC-4)	FIBER CEMENT PANEL	FIELD PAINT	HABRI SMOOTH PANEL - PAINT TO MATCH "SAFFRON"
DOWNSPOUT	SHEET METAL	FACTORY FINISH	AEP 'COOL MATTE BLACK'
ENCLOSURE SECURITY FENCING PANEL	STEEL	FACTORY FINISH	BLACK
FASCIA	SHEET METAL	FACTORY FINISH	AEP 'COOL MATTE BLACK'
GUTTERS	SHEET METAL	FACTORY FINISH	AEP 'COOL MATTE BLACK'
HOLLOW METAL - DOOR	FACTORY PRIMED HOLLOW METAL	FIELD PAINT	SW 6528 TRICORN BLACK
HOLLOW METAL - FRAME	FACTORY PRIMED HOLLOW METAL	FIELD PAINT	SW 6528 TRICORN BLACK
HOLLOW METAL - ADJACENT FLASHING	SHEET METAL	FACTORY FINISH	AEP 'COOL MATTE BLACK'
LIGHT FIXTURE	VARIABLES	FACTORY FINISH	REFER TO ELECTRICAL
LOUVER	ALUMINUM	FACTORY FINISH	MATCH ADJACENT WALL COLOR
LOUVER - ADJACENT FLASHING	SHEET METAL	FACTORY FINISH	MATCH ADJACENT WALL COLOR
SKYLIGHT FRAME	ALUMINUM	FACTORY FINISH	TBD
SOFFIT	PERFORATED METAL	FACTORY FINISH	AEP 'COOL REGAL WHITE'
STOREFRONT WINDOW - ADJACENT FLASHING	SHEET METAL	FACTORY FINISH	MATCH STOREFRONT COLOR
STOREFRONT WINDOW - ADJACENT BRAKE SHAPE	ALUMINUM	FACTORY FINISH	MATCH STOREFRONT COLOR
STOREFRONT WINDOW - FRAME	ALUMINUM	FACTORY FINISH	BLACK ANODIZED
STANDING SEAM METAL ROOFING	SHEET METAL	FACTORY FINISH	AEP 'COOL OLD TOWN GRAY'
STANDING SEAM ROOF- ADJACENT FLASHING	SHEET METAL	FACTORY FINISH	AEP 'COOL OLD TOWN GRAY'

KEY PLAN



REVISION	DATE	BY	DESCRIPTION

DATE: 6.18.2021
BSN: 19093
DRAWN BY: EG, MHR, WJ
CHECKED BY: WJ

EXTERIOR ELEVATIONS

IF SHEET MEASURES LESS THAN 30"x42", IT IS A REDUCED PRINT. REDUCE SCALE ACCORDINGLY