



Wise

Wraparound with Intensive Services Program Model Components



ACCESS

- For individuals, up to 21 years of age, with complex behavioral health needs, that could benefit from a higher level of care or is at risk of out of home placement
- Individual is Medicaid Eligible
- ANYONE can make a referral to WISE

Screening Requirements:

- Medicaid Eligibility
- Completion of a CANS Screen (*Child and Adolescent Needs and Strengths*)
- Meet the CANS Screening Algorithm
- Meet the qualifying criteria for WISE level of care (*as established under the Managed Care Entity's contracted standards*)

STAFFING

Wise Practitioners

A term used to describe the collection of WISE-trained staff roles, required for each team. These roles include:

- 1 Care Coordinator
- 2 Family Partner and/or Youth Partner
- 3 Mental Health Clinician

Unique Qualities

Strength-based Approach

Home and Community Settings

Youth and Family Driven

Program Oversight through Governance

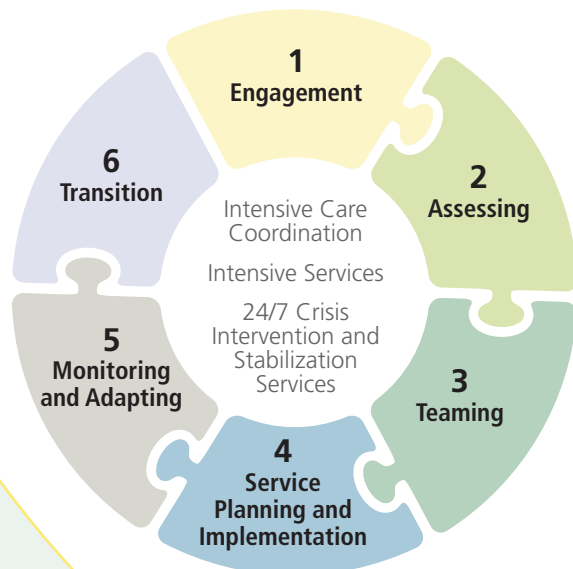
Cross-system Collaboration

Voluntary Program Model

6-month Transition Period

Outcome-based Process

PRACTICE MODEL & SERVICE ARRAY



DOCUMENTATION

Additional Documentation Requirements for WISE:

- 1 Child and Adolescent Needs and Strengths (CANS)
 - i CANS Screen
 - ii CANS full within 30 days of WISE Screen
 - iii Updated CANS every 90 days
 - iv Entry of CANS into BHAS (*Behavioral Health Assessment System*)
- 2 Tiered Crisis/Safety Plan
- 3 Cross System Care Plan (CSCP)
- 4 Child and Family Team (CFT) Meeting Notes
- 5 Releases of Information for CFT Members

For information go to: www.dshs.wa.gov/dbhr/cbh-wise.shtml



Transforming lives

DSHS 24-512 (4/16)