

General Assistance (GA-U and GA-X) Programs

<u>Exhibits</u>	Page
1. Selected GA-U ad GA-X Program Characteristics SFY 1999 and SFY 2000	106
2. GA-U and GA-X Program Cases (Chart) SFY 1999 to SFY 2000	107
3. GA-U and GA-X Program Cases (Table) SFY 1999 to SFY 2000	107
4. GA-U and GA-X Program New Applications (Chart) SFY 1998 to SFY 2000	108
5. GA-U and GA-X Program New Applications (Table) SFY 1998 to SFY 2000	108
6. Percent of GA-U Clients Exiting to GA-X (Chart) SFY 2000	109
7. Percent of GA-U Clients Exiting to GA-X (Table) SFY 2000	109
8. GA-U and GA-X Persons by Consecutive Months on Assistance (Chart) September 2000	110
9. GA-U and GA-X Persons by Consecutive Months on Assistance (Table) September 2000	110
10a. General Assistance (GA-U) Client Demographics, June 2000.....	111
10b. General Assistance (GA-U) Client Demographics, June 2000.....	112
11a. General Assistance (GA-X) Client Demographics, June 2000.....	113
11b. General Assistance (GA-X) Client Demographics, June 2000.....	114

General Assistance (GA-U and GA-X) Program

General Assistance (GA-U and GA-X) Programs

This section describes two General Assistance programs:

1. **General Assistance-Unemployable (GA-U).** GA-U includes General Assistance for: Unemployable (GA-U), Aged (GA-A), Blind (GA-B), Disabled (GA-P), Institution for the Mentally Diseased (GI), and Legal Guardians (GH).
2. **General Assistance-Expedited Medical Disability (GA-X).** The GA-X program is designed for cases pending SSI, the federal Supplemental Security Income.

Highlights:

- ✍ **The average monthly GA-U and GA-X caseload decreased in SFY 2000** (16,399 cases), from SFY 1999 (16,908 cases).
- ✍ **The average payment per case in SFY 2000 was \$304.61.**
- ✍ **The number of new applicants per month increased in SFY 2000**, from 3,637 in July 1999 to 4,272 in June 2000.
- ✍ **In SFY 2000, about 6% of the caseload moved from GA-U to GA-X each month.** GA-U clients are often moved into the GA-X program as a first step in securing federal SSI benefits for the client.
- ✍ **Most (54%) of General Assistance recipients are male, and over 70% are white.** Most are divorced (28%) or never married (40%).
- ✍ **The median age for GA-U clients is 43.2 years and 44.2 years for GA-X clients.**

General Assistance (GA-U and GA-X) Program

Exhibit 1

Selected GA-U and GA-X Program Characteristics SFY 1999 and SFY 2000

	SFY99 (July 98 - June 99)	SFY00 (July 99 - June 00)
Average Number of <u>Cases</u> Per Month (Range) ¹	16,908 (16,360 – 17,631)	16,399 (15,982 – 16,964)
Average Number of <u>Persons</u> Per Month (Range) ¹	17,046 (16,489 – 17,776)	16,514 (16,107 – 17,080)
Average Number of <u>Adults</u> Per Month (Range) ¹	17,045 (16,488 – 17,776)	16,513 (16,106 – 17,078)
Recipients as a Percent of State's Total Population	0.3%	0.3%
Total Population ²	5,757,400	5,803,400
Average Persons Per Case	1.0	1.0
Average Monthly Payment Per <u>Case</u> (Range) ^{1 3}	\$307.69 (\$305.86 - \$309.91)	\$304.61 (\$302.82 - \$305.68)

Note: The GA-U cases for May 1999 and later have been adjusted to exclude cases formerly in the General Assistance for Pregnant Women Program (GA-S). These cases have been paid TANF funds since May 1999. GA-U and GA-X includes General Assistance for: Unemployable (GA-U), Aged (GA-A), Blind (GA-B), Disabled (GA-P), Expedited Medical (GA-X), Institution for the Mentally Diseased (GI) and Legal Guardians (GH).

¹ Source: CARD Clients, Persons, and Expenditures Report.

² Source: OFM 2000 Population Trends.

³ Payments are not adjusted for refunds.

General Assistance (GA-U and GA-X) Program

Exhibit 2
GA-U and GA-X Program Cases
SFY 1999 to SFY 2000

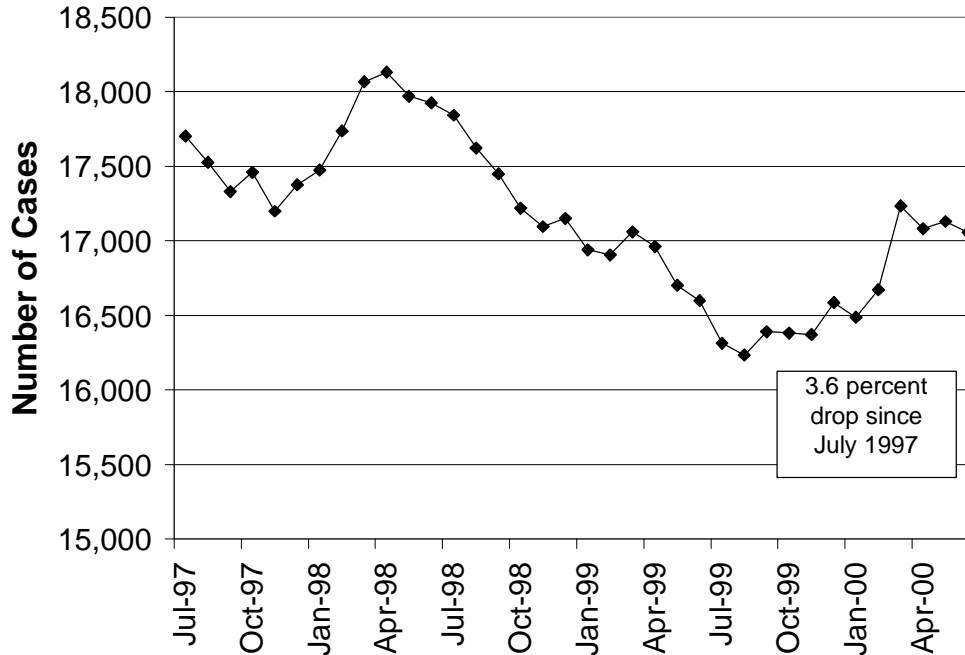


Exhibit 3
GA-U and GA-X Program Cases
SFY 1998 to SFY 2000

	SFY98	SFY99	SFY00
July	17,701	17,842	16,314
August	17,526	17,622	16,234
September	17,331	17,449	16,390
October	17,458	17,218	16,381
November	17,198	17,095	16,370
December	17,375	17,150	16,586
January	17,473	16,939	16,487
February	17,736	16,906	16,672
March	18,066	17,060	17,234
April	18,130	16,961	17,081
May	17,970	16,702	17,129
June	17,924	16,599	17,056

Source: CARD Cases Persons and Expenditures Report.

Note: The GA-U cases for May 1999 and later have been adjusted to exclude cases formerly in the General Assistance for Pregnant Women Program (GA-S). These cases have been paid TANF funds since May 1999. GA-U and GA-X includes General Assistance for: Unemployable (GA-U), Aged (GA-A), Blind (GA-B), Disabled (GA-P), Expedited Medical (GA-X), Institution for the Mentally Diseased (GI) and Legal Guardians (GH).

General Assistance (GA-U and GA-X) Program

Exhibit 4
GA-U and GA-X Program New Applications
SFY 1998 to SFY 2000

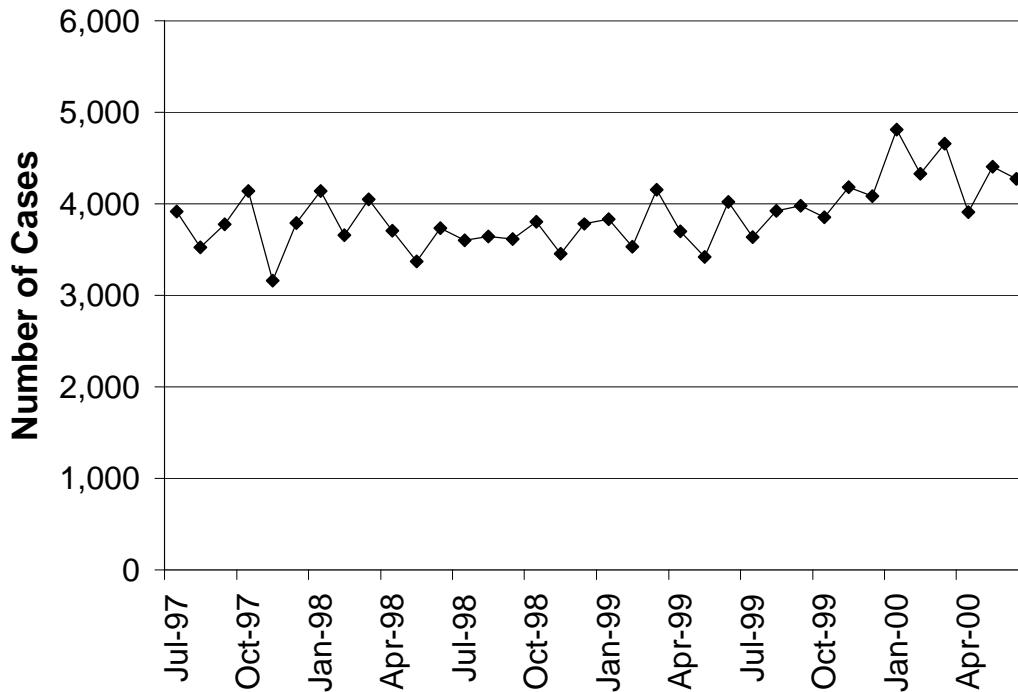


Exhibit 5
GA-U and GA-X Program New Applications
SFY 1998 to SFY 2000

	SFY98	SFY99	SFY00
July	3,915	3,597	3,637
August	3,522	3,645	3,922
September	3,774	3,614	3,982
October	4,141	3,803	3,855
November	3,158	3,455	4,184
December	3,789	3,780	4,082
January	4,141	3,832	4,809
February	3,658	3,532	4,328
March	4,049	4,151	4,654
April	3,704	3,699	3,909
May	3,368	3,422	4,403
June	3,733	4,019	4,272

Source: MRDA caseload tracking using the CARD database.

Note: Applications were identified using application dates in the ACES system. All applications entered into ACES are counted, including new cases, closed cases reapplying for benefits and clients added to open cases. The GA-U cases for May 1999 and later have been adjusted to exclude cases formerly in the General Assistance for Pregnant Women Program (GA-S). These cases have been paid TANF funds since May 1999. GA-U and GA-X includes General Assistance for: Unemployable (GA-U), Aged (GA-A), Blind (GA-B), Disabled (GA-P), Expedited Medical (GA-X), Institution for the Mentally Diseased (GI) and Legal Guardians (GH).

General Assistance (GA-U and GA-X) Program

Exhibit 6
Percent of GA-U Clients Exiting to GA-X
SFY 2000

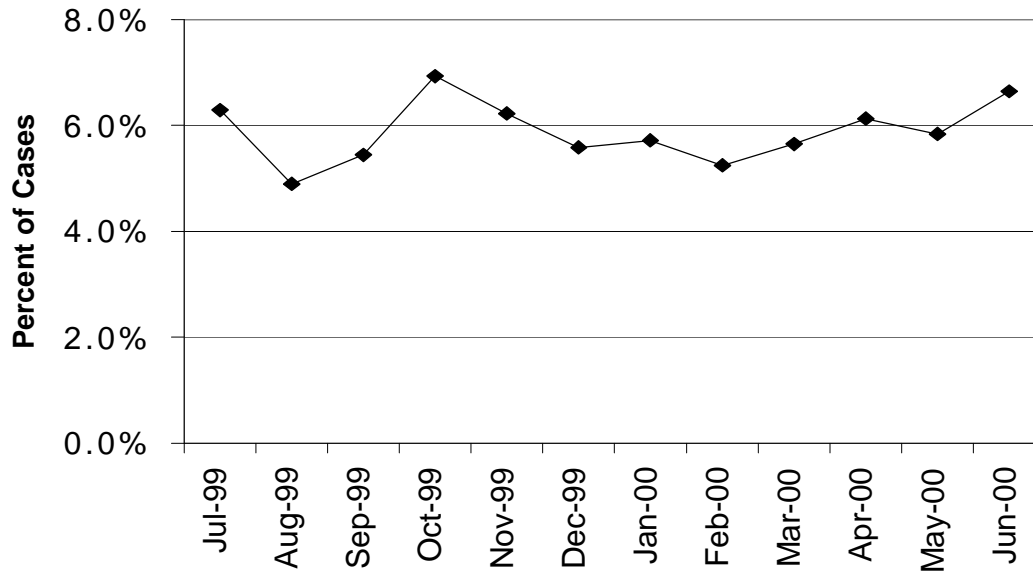


Exhibit 7
GA-U Clients Exiting to GA-X
SFY 2000

	Total GA-U	GA-U to GA-X	Percent
Jul-99	9,445	594	6.3%
Aug-99	9,330	457	4.9%
Sep-99	9,419	513	5.4%
Oct-99	9,281	643	6.9%
Nov-99	9,219	574	6.2%
Dec-99	9,365	523	5.6%
Jan-00	9,337	534	5.7%
Feb-00	9,487	498	5.2%
Mar-00	9,870	558	5.7%
Apr-00	9,773	599	6.1%
May-00	9,797	572	5.8%
Jun-00	9,618	639	6.6%

Source: MRDA caseload tracking using the CARD database.

Note: GA-U to GA-X counts the number of clients receiving GA-X in their first month, following the month they received GA-U. GA-U is General Assistance for Unemployable only. GA-X is expedited medical only.

General Assistance (GA-U and GA-X) Program

Exhibit 8
GA-U and GA-X Persons
by Consecutive Months on Assistance
September 2000

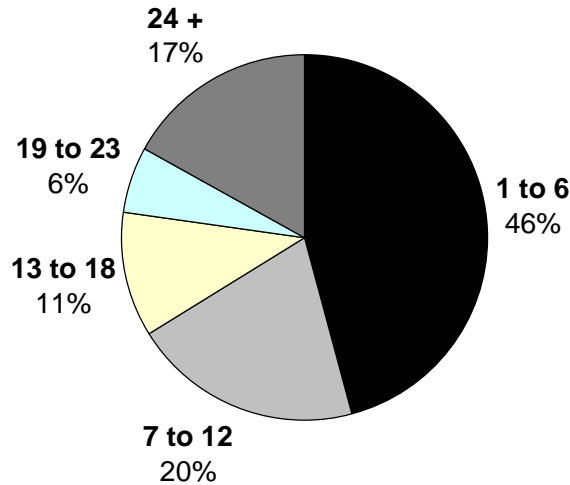


Exhibit 9
GA-U and GA-X Persons
by Consecutive Months on Assistance
September 2000

Months	Persons	Percent	Months	Persons	Percent
1	1,575	9.2%	13	421	2.5%
2	1,629	9.5%	14	336	2.0%
3	1,357	7.9%	15	347	2.0%
4	1,442	8.4%	16	334	1.9%
5	1,005	5.9%	17	235	14.0%
6	884	5.1%	18	216	1.3%
7	797	4.6%	19	251	1.5%
8	675	3.9%	20	206	1.2%
9	604	3.5%	21	163	0.9%
10	525	3.1%	22	211	1.2%
11	444	2.6%	23	188	11.0%
12	424	2.5%	24+	2,898	16.9%

Source: MRDA caseload tracking using the CARD database.

Note: GA-U and GA-X includes General Assistance for: Unemployable (GA-U), Aged (GA-A), Blind (GA-B), Disabled (GA-P), Expedited Medical (GA-X), Institution for the Mentally Diseased (GI) and Legal Guardians (GH).

General Assistance (GA-U and GA-X) Program

Exhibit 10a

General Assistance (GA-U) Client Demographics, June 2000

Characteristic	All GA-U Clients (N=10,755)	Percent
Gender		
Female	4,867	45.3%
Male	5,885	54.7%
Unknown	3	0.0%
Race		
White	7,624	70.9%
Hispanic	537	5.0%
Black	958	8.9%
Asian/Pacific Islander	670	6.2%
Native American	463	4.3%
Unknown	503	4.7%
Marital Status		
Separated	1,504	14.0%
Married	1,066	9.9%
Never Married	4,325	40.2%
Divorced	2,981	27.7%
Widow	562	5.2%
Unknown	317	2.9%
Citizenship		
U.S. Citizen	9,437	87.7%
Resident Alien	1,302	12.1%
U.S. National	13	0.1%
Unknown	3	0.0%
Age		
< 17 Years Old	303	2.8%
17 - 18 Years Old	98	0.9%
19 - 20 Years Old	324	3.0%
21 – 30 Years Old	1,473	13.7%
31 – 40 Years Old	2,438	22.6%
41 – 50 Years Old	3,379	31.4%
51 – 55 Years Old	1,073	10.0%
56 + Years Old	1,667	15.5%
Unknown	0	0.0%
Mean	42.8 Years Old	
Median	43.2 Years Old	

Source: MRDA caseload tracking the CARD database.

Note: GA-U includes General Assistance for: Unemployable (GA-U), Aged (GA-A), Blind (GA-B), Disabled (GA-P), Institution for the Mentally Diseased (GI) and Legal Guardians (GH). This excludes Expedited Medical (GA-X).

General Assistance (GA-U and GA-X) Program

Exhibit 10b

General Assistance (GA-U) Client Demographics, June 2000

Characteristic	All GA-U Clients (N=10,755)	Percent
Client Type		
Adult	10,429	97.0%
Child ¹	325	3.0%
Limited in Life Activity ²	6,966	64.8%
Limited in Work ²	6,575	61.1%
Limited in English ³	1,041	9.7%
DSHS Region		
Region 1	2,041	19.0%
Region 2	729	6.8%
Region 3	1,641	15.3%
Region 4	3,077	28.6%
Region 5	1,363	12.7%
Region 6	1,721	16.0%
Other	183	1.7%
CSO Type		
Urban	7,930	73.7%
Rural	2,825	26.3%

Source: MRDA caseload tracking the CARD database.

Note: GA-U + GA-X includes General Assistance for: Unemployable (GA-U), Aged (GA-A), Blind (GA-B), Disabled (GA-P), Institution for the Mentally Diseased (GI) and Legal Guardians (GH). This excludes Expedited Medical (GA-X).

¹ Child cases include GA-H, children living with the legal guardian.

² Caseworkers ask whether a client is limited in a life activity (e.g., dressing or bathing) or limited in their ability to work. The questions are used to identify disabled clients.

³ A client is included in Limited English if the Head of Household for the Assistance Unit has indicated he/she wants to receive materials in a language other than English.

General Assistance (GA-U and GA-X) Program

Exhibit 11a

General Assistance (GA-X) Client Demographics, June 2000

Characteristic	All GA-X Clients (N=6,311)	
	(N=6,311)	Percent
Gender		
Female	2,899	45.9%
Male	3,411	54.0%
Unknown	1	0.0%
Race		
White	4,933	78.2%
Hispanic	233	3.7%
Black	573	9.1%
Asian/Pacific Islander	163	2.6%
Native American	203	3.2%
Unknown	206	3.3%
Marital Status		
Separated	908	14.4%
Married	296	4.7%
Never Married	2,665	42.2%
Divorced	2,034	32.2%
Widow	170	2.7%
Unknown	238	3.8%
Citizenship		
U.S. Citizen	6,029	95.5%
Resident Alien	276	4.4%
U.S. National	6	0.1%
U.S. Born Child of Refugee	0	0.0%
Undocumented Alien	0	0.0%
Unknown	0	0.0%
Age		
< 17 Years Old	0	0.0%
17 - 18 Years Old	18	0.3%
19 - 20 Years Old	137	2.2%
21 – 30 Years Old	855	13.6%
31 – 40 Years Old	1,397	22.2%
41 – 50 Years Old	2,544	40.4%
51 – 55 Years Old	830	13.2%
56 + Years Old	530	8.4%
Unknown	0	0.0%
Mean	42.8 Years Old	
Median	44.1 Years Old	

Source: MRDA caseload tracking the CARD database.

Note: GA-X includes Expedited Medical ONLY.

General Assistance (GA-U and GA-X) Program

Exhibit 11b

General Assistance (GA-X) Client Demographics, June 2000

Characteristic	All GA-X Clients	
	(N=6,311)	Percent
Limited in Life Activity ¹	5,185	82.2%
Limited in Work ¹	5,100	80.8%
Limited in English ²	236	3.7%
DSHS Region		
Region 1	999	15.8%
Region 2	400	6.3%
Region 3	939	14.9%
Region 4	1,567	24.8%
Region 5	1,152	18.3%
Region 6	1,042	16.5%
Other	212	3.4%
CSO Type		
Urban	4,679	74.1%
Rural	1,632	25.9%

Source: MRDA caseload tracking the CARD database.

Note: GA-X includes Expedited Medical ONLY.

¹ Caseworkers ask whether a client is limited in a life activity (e.g., dressing or bathing) or limited in their ability to work. The questions are used to identify disabled clients.

² A client is included in Limited English if the Head of Household for the Assistance Unit has indicated he/she wants to receive materials in a language other than English.