

Child Support

Child Support

This section describes the child support caseload. Three types of cases make up the Title IV-D child support cases:

- ~~///~~ **Current Assistance** (individuals receiving TANF or Title IV-E Foster Care)
- ~~///~~ **Former Assistance** (individuals who have ever received TANF/AFDC or Title IV-E Foster Care) and
- ~~///~~ **Never Assistance** (individuals who have never received TANF/AFDC or Title IV-E Foster Care. Medicaid, child care only and State Only Foster Care are Never Assistance cases.)

The Child Support Performance and Incentive Act of 1998 awards incentives to states' child support programs based on their performance on five measures.

1. Paternity establishment
2. Order establishment
3. Current support collected
4. Cases paying toward arrears
5. Cost effectiveness.

The Child Support Incentive Scorecard shows DCS outcomes on the five measures over the past two federal fiscal years. Information is presented in federal fiscal years because that is the time frame used for awarding incentives earned by the state's child support program. For example, in FFY 1999, Washington's Division of Child Support earned \$14.2 million in incentives.

Highlights:

- ~~///~~ **The overall performance on the Incentive Scorecard increased to 87% in FFY 2000**, compared to 84% in FFY 1999.
- ~~///~~ **Child support collections increased to \$605.2 million in SFY 2001**, compared to \$586.5 in SFY 2000.
- ~~///~~ **Child support served an average of 427,581 children per month in SFY 2001.**
- ~~///~~ **The average monthly Child Support IV-D caseload decreased slightly in SFY 2001 (322,168 cases)**, compared to SFY 2000 (322,988 cases). The drop in current assistance cases is responsible for this decline.
- ~~///~~ **Current Assistance cases numbered 52,756 in SFY 2001**, compared to 58,100 in SFY 2000, a 9.2 percent decrease.
- ~~///~~ **The majority (87%) of non-custodial parents is male and 24-39 years old (55%).**

Child Support

Child Support Incentive Scorecard FFY 1999 and FFY 2000¹

Source: Division of Child Support

MEASURE	GOAL NEEDED TO OBTAIN 100% FUNDING	ACTUAL PERFORMANCE FFY		PERCENTAGE OF MAXIMUM INCENTIVE REACHED	
		1999	2000	1999	2000
Paternity Establishment Percentage	80%	110%	94%	100%	100%
Order Establishment	80%	88%	89%	100%	100%
Current Support	80%	58%	61%	68%	71%
Arrears Cases Paying	80%	63%	64%	73%	74%
Cost Effectiveness	\$5.00	\$4.37	\$4.53	80%	90%
OVERALL SCORE				84%	87%

¹ FFY 1999 (Federal Fiscal Year) began October 1, 1998 and ended September 30, 1999. FFY 2000 began October 1, 1999 and ended September 30, 2000.

Child Support

Child Support Caseload and Collections July 1999 to June 2001

Source: Division of Child Support

	CHILD SUPPORT CASELOAD				CHILD SUPPORT COLLECTIONS		COLLECTIONS BY CASE TYPE		
	TANF/ FOSTER CARE ¹	FORMER ASST ²	NEVER ASST ³	TOTAL IV-D CASELOAD	ACTUAL	PROJECTED	TANF/ FOSTER CARE ¹	FORMER ASST ²	NEVER ASST ³
JUL 99	62,332	175,978	84,273	322,583	\$57,176,480	\$47,103,198	\$5,306,918	\$28,387,091	\$23,482,472
AUG	61,157	177,032	84,444	322,633	\$45,248,352	\$44,996,671	\$3,910,287	\$20,579,749	\$20,758,316
SEPT	60,050	177,732	84,634	322,416	\$44,028,917	\$44,084,704	\$3,623,320	\$19,538,952	\$20,866,645
OCT	59,778	178,121	84,934	322,833	\$45,616,586	\$46,136,073	\$3,816,097	\$20,579,805	\$21,220,684
NOV	58,230	178,937	85,154	322,321	\$44,807,529	\$43,000,404	\$3,663,714	\$20,133,619	\$21,010,197
DEC	56,576	180,327	85,257	322,160	\$47,551,697	\$47,582,635	\$3,816,485	\$21,208,076	\$22,527,135
JAN 00	59,648	177,449	85,861	322,958	\$43,867,138	\$45,657,960	\$3,413,117	\$19,560,277	\$20,893,744
FEB	58,214	179,092	86,101	323,407	\$44,560,229	\$44,025,669	\$3,545,094	\$19,779,336	\$21,235,799
MAR	57,324	179,764	86,583	323,671	\$53,618,219	\$50,654,798	\$4,764,845	\$24,757,118	\$24,096,257
APR	56,575	180,279	87,062	323,916	\$50,027,106	\$50,466,921	\$4,293,066	\$23,599,544	\$22,134,495
MAY	54,297	181,885	87,254	323,436	\$53,710,135	\$51,678,612	\$4,409,168	\$25,428,583	\$23,842,384
JUNE	53,024	182,798	87,694	323,516	\$56,381,945	\$54,331,903	\$4,460,628	\$27,154,345	\$24,766,971
SFY 00	58,100	179,116	85,771	322,988	\$586,594,334	\$569,719,548	\$49,022,739	\$270,706,497	\$266,865,099
JUL 00	54,709	181,168	87,866	323,743	\$48,865,565	\$48,864,942	\$3,800,039	\$23,060,369	\$22,005,158
AUG	52,237	183,419	87,736	323,392	\$50,762,126	\$50,760,541	\$3,811,583	\$23,232,189	\$23,718,354
SEPT	54,125	181,193	87,863	323,181	\$46,136,815	\$48,876,511	\$3,444,456	\$20,918,102	\$21,774,258
OCT	53,338	182,634	88,196	324,168	\$49,186,433	\$51,748,160	\$3,600,325	\$22,522,652	\$23,063,456
NOV	52,427	184,033	88,452	324,912	\$47,831,034	\$47,177,736	\$3,499,555	\$21,598,541	\$22,732,939
DEC	53,189	183,512	88,877	325,578	\$46,463,255	\$52,538,585	\$3,289,714	\$20,763,183	\$22,410,359
JAN 01	53,540	183,727	89,227	326,494	\$49,233,100	\$50,109,118	\$3,527,907	\$22,208,011	\$23,497,181
FEB	52,311	184,693	89,390	326,394	\$43,299,528	\$48,288,196	\$2,971,341	\$19,219,438	\$21,108,749
MAR	53,554	179,416	89,270	322,240	\$57,973,307	\$57,317,823	\$4,536,523	\$27,475,563	\$25,961,221
APR	53,357	177,675	89,523	320,555	\$53,179,919	\$57,732,514	\$4,056,056	\$25,031,156	\$24,092,706
MAY	50,921	174,441	89,043	314,405	\$55,414,647	\$58,506,724	\$4,168,991	\$26,260,469	\$24,985,187
JUNE	49,363	172,712	88,873	310,948	\$56,869,744	\$61,474,248	\$4,445,089	\$27,033,786	\$25,390,869
SFY 01	52,756	180,719	88,693	322,168	\$605,215,474	\$633,395,098	\$45,151,579	\$279,323,458	\$280,740,437

Note: Case counts are unduplicated

¹ TANF/Foster Care or Current Assistance (TANF or Title IV-E Foster Care)

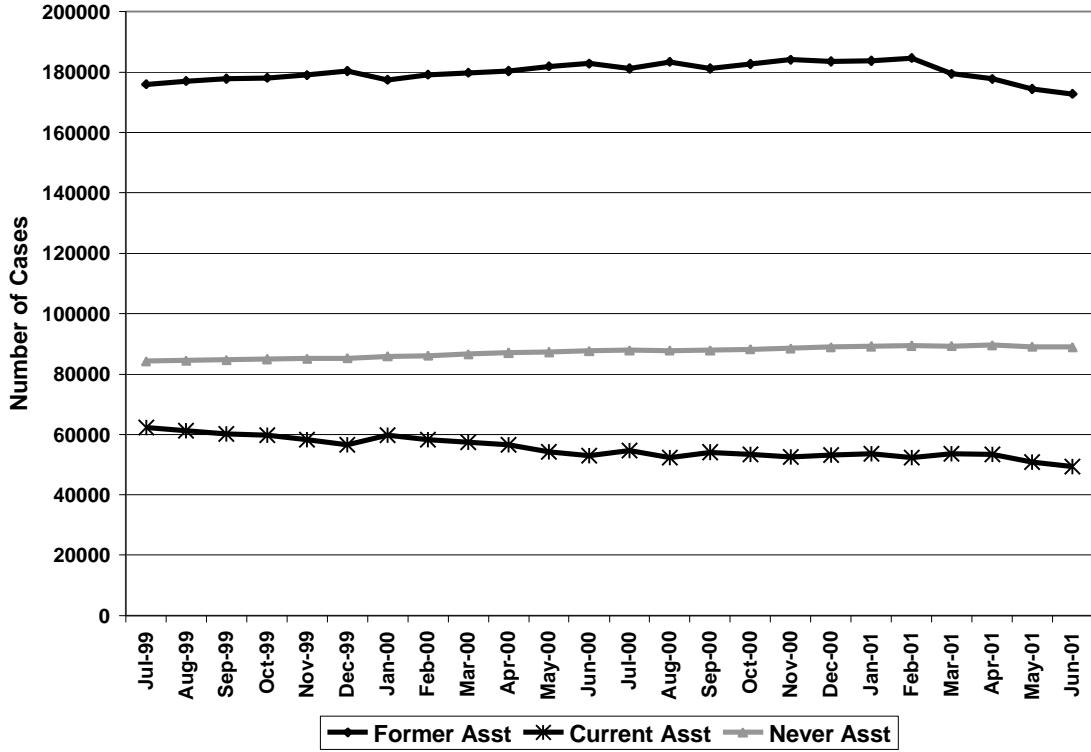
² Former Assistance (individuals who have ever received TANF/AFDC or Title IV-E Foster Care); and

³ Never Assistance (individuals who have never received TANF/AFDC or Title IV-E. Medicaid only, child care only and State Only Foster Care are considered Never Assistance). Payment Service Only and medical and subrogated debt cases are excluded from Title IV-D cases.

Child Support

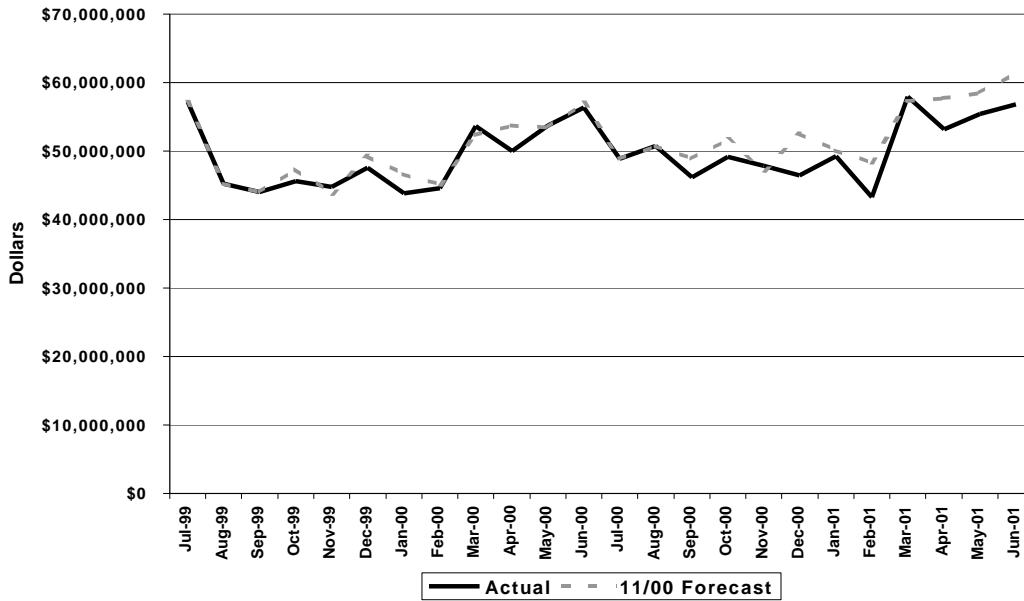
Child Support Caseload by Type July 1999 to June 2001

Source: Division of Child Support

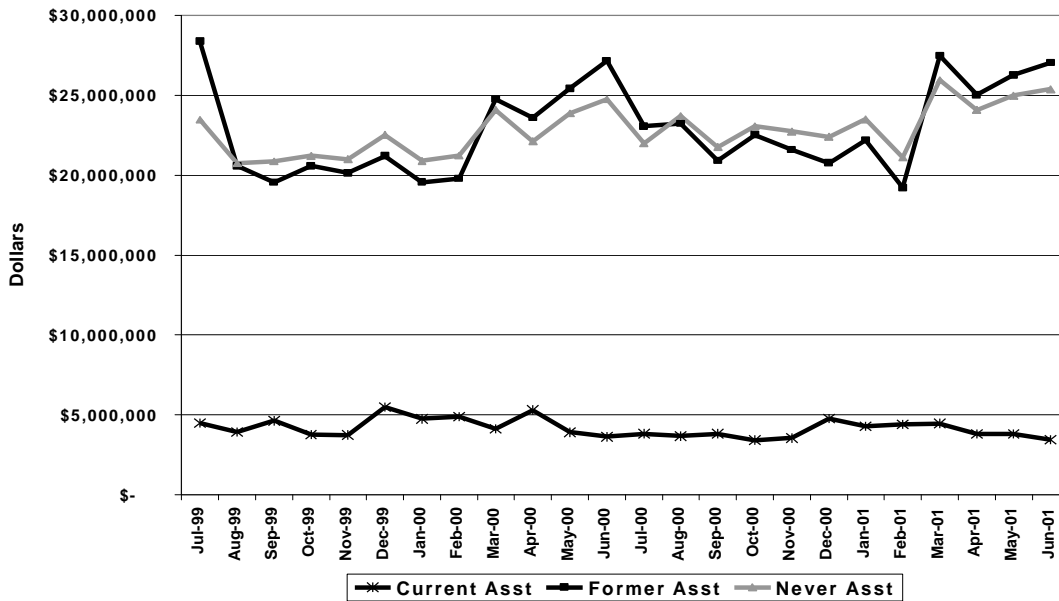


Child Support

**Child Support Collections
Actual and Projected – SFY 2000 to SFY 2001**
Source: Division of Child Support



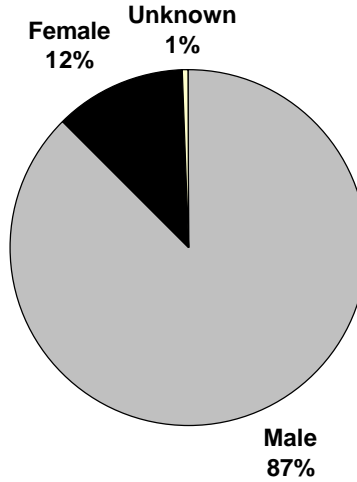
**Child Support Collections by Case Type
March 1998 to June 2000**
Source: Division of Child Support



Child Support

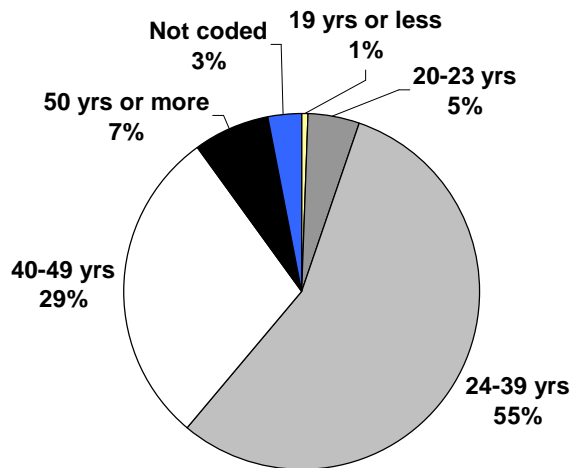
Non-Custodial Parents by Gender, August 2000 (N=311,596)

Source: Division of Child Support



Non-Custodial Parents by Age, August 2000 (N=311,596)

Source: Division of Child Support



Note: The non-custodial parent is the parent (mother, father, or reputed father) who is now or eventually may be obligated under the law for the support of a child or children receiving services under the Title IV-D child support program.