

## General Assistance (GA-U and GA-X) Program

### General Assistance (GA-U and GA-X) Programs

This section describes two General Assistance programs:

1. **General Assistance-Unemployable (GA-U).** GA-U includes General Assistance for: Unemployable (GA-U), Aged (GA-A), Blind (GA-B), Disabled (GA-P), and Institution for the Mentally Diseased (GI).
2. **General Assistance-Expedited Medical Disability (GA-X).** The GA-X program supports clients pending applications for SSI, the federal Supplemental Security Income.

#### Highlights:

- The average monthly GA-U and GA-X caseload increased in SFY 2001** (17,850 cases), from SFY 2000 (16,663 cases).
- The average payment per case in SFY 2001 was \$304.99.**
- In SFY 2001, about 5% of the caseload moved from GA-U to GA-X each month.** GA-U clients are moved into the GA-X program when certified as likely to qualify for federal SSI benefits.
- Most (56%) of General Assistance recipients are male, and 70% are white.** Most are divorced (31%) or never married (41%).
- The median age for GA-U clients is 43.5 years and 42.9 years for GA-X clients.**

## General Assistance (GA-U and GA-X) Program

### Selected GA-U and GA-X Program Characteristics SFY 2000 and SFY 2001

Source: Cases, Persons, and Expenditures Report (October 2001 Load)

	SFY00 (July 99 – June 00)	SFY01 (July 00 – June 01)
<b>Average Number of Cases Per Month (Range)</b>	16,663 (16,235 – 17,236)	17,850 (16,654 – 19,271)
<b>Average Number of Persons Per Month (Range)</b>	16,845 (16,424 – 17,411)	17,979 (16,779 – 19,435)
<b>Average Number of Adults Per Month (Range)</b>	16,533 (16,123 – 17,100)	17,978 (16,779 – 19,434)
<b>Recipients as a Percent of State's Total Population</b>	0.3%	0.3%
<b>State Population<sup>1</sup></b>	5,894,121	5,974,900
<b>Average Persons Per Case</b>	1.0	1.0
<b>Average Monthly Payment Per Case (Range)<sup>2</sup></b>	\$305.19 (\$303.37 - \$306.52)	\$304.99 (\$302.46 – \$306.58)

<sup>1</sup> OFM, 2001 Population Trends for Washington State

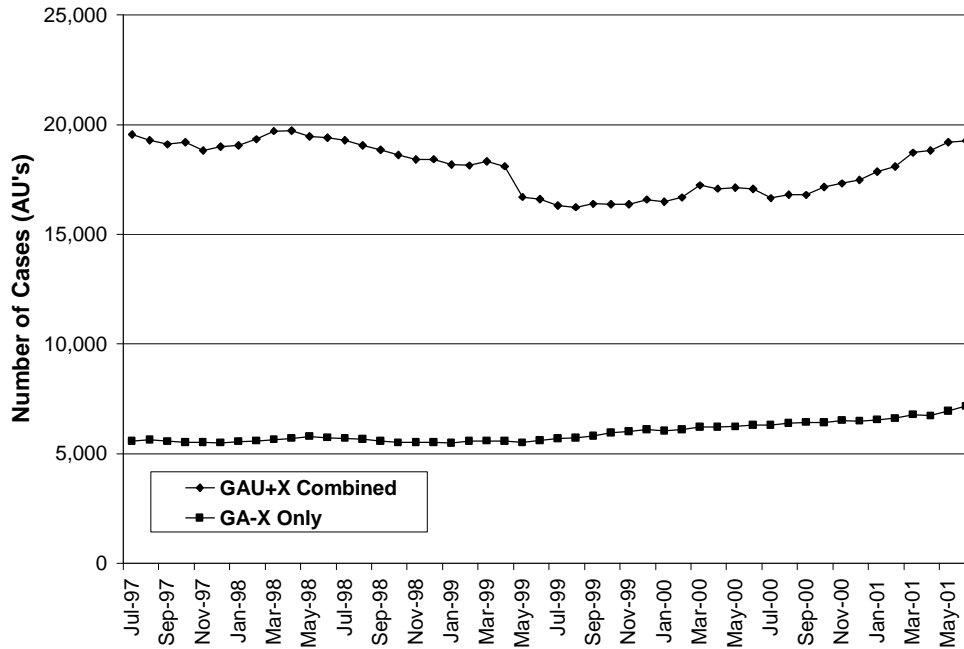
<sup>2</sup> Payments are not adjusted for refunds

**Note:** The Combined GA-U+X caseload for May 1999 and later have been adjusted to exclude cases formerly in the General Assistance For Pregnant Women Program (GS). These cases have been paid TANF funds since May 1999. The Combined GA-U+X caseload for July 2000 and later have been adjusted to exclude cases formerly in the General Assistance For Legal Guardian Program (GH). These cases have been paid TANF funds since July 2000. Since July 2000, the GA-U and GA-X caseload includes general assistance for Unemployable (GA-U), Aged (GA-A), Blind (GA-B), Disabled (GA-P), Expedited Medical (GA-X), and Institution for the Mentally Diseased (GI).

## General Assistance (GA-U and GA-X) Program

### GA-U and GA-X Combined Caseload, SFY 2001

Source: Cases, Persons, and Expenditures Report (October 2001 Load)



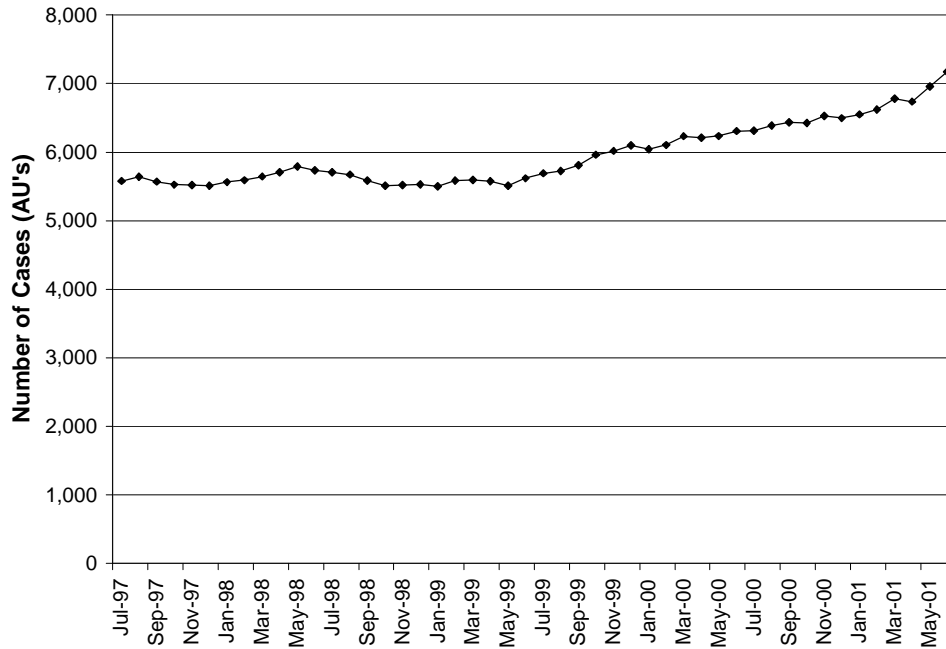
	Cases	Persons	Gross Expenditures	Recoveries	Payment Per Case
<b>July</b>	17,063	16,779	\$5,078,662.56	\$1,263,484.98	\$304.95
<b>August</b>	16,654	16,921	\$5,116,290.31	\$1,603,992.70	\$304.45
<b>September</b>	16,805	16,919	\$5,096,893.52	\$1,431,711.34	\$303.44
<b>October</b>	16,797	17,287	\$5,209,385.39	\$1,350,349.99	\$303.54
<b>November</b>	17,162	17,434	\$5,286,054.71	\$1,208,060.95	\$305.23
<b>December</b>	17,318	17,598	\$5,346,184.31	\$1,909,919.13	\$305.76
<b>January</b>	17,485	17,971	\$5,401,977.57	\$1,479,179.19	\$302.46
<b>February</b>	17,860	18,208	\$5,543,486.37	\$1,631,048.85	\$306.51
<b>March</b>	18,086	18,854	\$5,700,660.24	\$2,003,253.52	\$304.47
<b>April</b>	18,723	18,974	\$5,769,452.09	\$1,463,748.74	\$306.36
<b>May</b>	18,832	19,370	\$5,889,489.93	\$1,990,369.82	\$306.58
<b>June</b>	19,210	19,435	\$5,890,526.31	\$1,621,755.34	\$305.67

**Note:** The Combined GA-U+X caseload for May 1999 and later have been adjusted to exclude cases formerly in the General Assistance For Pregnant Women Program (GS). These cases have been paid TANF funds since May 1999. The Combined GA-U+X caseload for July 2000 and later have been adjusted to exclude cases formerly in the General Assistance For Legal Guardian Program (GH). These cases have been paid TANF funds since July 2000. Subsequent to July 2000, the GA-U and GA-X caseload includes general assistance for Unemployable (GA-U), Aged (GA-A), Blind (GA-B), Disabled (GA-P), Expedited Medical (GA-X), and Institution for the Mentally Diseased (GI).

## General Assistance (GA-U and GA-X) Program

### GA-X Only Caseload, SFY 2001

Source: Cases, Persons, and Expenditures Report (October 2001 Load)



	<b>Cases</b>	<b>Persons</b>	<b>Gross Expenditures</b>	<b>Recoveries</b>	<b>Payment Per Case</b>
<b>July</b>	6,312	6,320	\$2,009,509.03	\$1,250,832.91	\$318.36
<b>August</b>	6,386	6,392	\$2,033,490.44	\$1,584,024.27	\$318.43
<b>September</b>	6,435	6,440	\$2,052,185.79	\$1,413,940.67	\$318.91
<b>October</b>	6,421	6,429	\$2,045,969.43	\$1,337,218.94	\$318.64
<b>November</b>	6,529	6,536	\$2,083,405.15	\$1,188,195.99	\$319.10
<b>December</b>	6,495	6,503	\$2,075,444.92	\$1,891,210.71	\$319.55
<b>January</b>	6,549	6,556	\$2,085,951.16	\$1,465,049.32	\$318.51
<b>February</b>	6,617	6,625	\$2,118,665.90	\$1,605,085.58	\$320.19
<b>March</b>	6,780	6,788	\$2,169,198.41	\$1,987,403.10	\$319.94
<b>April</b>	6,737	6,744	\$2,159,624.23	\$1,450,255.47	\$320.56
<b>May</b>	6,955	6,964	\$2,233,105.57	\$1,969,408.47	\$321.08
<b>June</b>	7,173	7,182	\$2,302,612.32	\$1,610,400.14	\$321.01

**Note:** GA-X is restricted to general assistance for Expedited Medical Only (GA-X)

## General Assistance (GA-U and GA-X) Program

### GA-U Adults Exiting to GA-X or Some Other Program, SFY 2001

Source: MRDA Tracking Using the CARD Database (October 2001 Load)

	Total GA-U Adults	During Subsequent Month Being Reported					
		Adults Remaining On GA-U	Percent of Adults Remaining On GA-U	Adults Moving From GA-U to GA-X	Percent of Adults Moving From GA-U to GA-X	Adults Moving From GA-U to Other Programs or Exiting	Percent of Adults Moving From GA-U to Other Programs
July	10,457	8,916	85.3%	533	5.1%	1,008	9.6%
August	10,531	8,875	84.3%	625	5.9%	1,031	9.8%
September	10,479	9,089	86.7%	469	4.5%	921	8.8%
October	10,861	9,301	85.6%	592	5.5%	968	8.9%
November	10,899	9,476	86.9%	490	4.5%	933	8.6%
December	11,091	9,577	86.3%	524	4.7%	990	8.9%
January	11,413	9,911	86.8%	556	4.9%	946	8.3%
February	11,574	10,134	87.6%	573	5.0%	867	7.5%
March	12,068	10,444	86.5%	598	5.0%	1,026	8.5%
April	12,230	10,581	86.5%	642	5.2%	1,007	8.2%
May	12,405	10,447	84.2%	860	6.9%	1,098	8.9%
June	12,248	10,453	85.3%	682	5.6%	1,113	9.1%

**Note:** Clients received GA-U during the month being reported. Anything to the right of the vertical line, the client received during the subsequent month.

### GA-U and GA-X Clients on Assistance 12 or More Consecutive Months SFY 2001

Source: MRDA Tracking Using the CARD Database (October 2001 Load)

	All Clients on 12 or More Consecutive Months	GA-U Clients on 12 or More Consecutive Months	Percent of GA-U Clients on 12 or More Consecutive Months	GA-X Clients on 12 or More Consecutive Months	Percent of GA-X Clients on 12 or More Consecutive Months
July	3,544	1,736	49.0%	1,808	51.0%
August	3,553	1,721	48.4%	1,832	51.6%
September	3,562	1,695	47.6%	1,867	52.4%
October	3,602	1,701	47.2%	1,901	52.8%
November	3,612	1,673	46.3%	1,939	53.7%
December	3,618	1,662	45.9%	1,956	54.1%
January	3,658	1,708	46.7%	1,950	53.3%
February	3,748	1,751	46.7%	1,997	53.3%
March	3,868	1,800	46.5%	2,068	53.5%
April	3,907	1,824	46.7%	2,083	53.3%
May	3,997	1,825	45.7%	2,172	54.3%
June	3,993	1,810	45.3%	2,183	54.7%

## General Assistance (GA-U and GA-X) Program

### GAU+X Caseload By DSHS Region and CSO, June 2001

Source: MRDA Tracking Using the CARD Database (October 2001 Load)

	Number of Cases	Percent of Cases
<b>Region 1</b>		
Clarkston	75	0.4%
Colfax	65	0.3%
Colville HCS	13	0.1%
Davenport	31	0.2%
Moses Lake	259	1.3%
Moses Lake HCS	7	0.0%
Newport	78	0.4%
Okanogan	285	1.5%
Okanogan HCS	3	0.0%
Othello	15	0.1%
Pomeroy	2	0.0%
Republic	58	0.3%
Spokane Central	195	1.0%
Spokane HCS	27	0.1%
Spokane North	497	2.6%
Spokane Southwest	674	3.5%
Spokane Valley	494	2.6%
Tri County - Colville	212	1.1%
Wenatchee - Chelan	331	1.7%
Wenatchee - Douglas	62	0.3%
Wenatchee HCS	7	0.0%
<b>Region 1 Total</b>	<b>3,390</b>	<b>17.6%</b>
<b>Region 2</b>		
Clarkston HCS	1	0.0%
Ellensburg	48	0.2%
Grandview	29	0.2%
Kennewick	310	1.6%
Pasco	164	0.9%
Pasco HCS	9	0.0%
Sunnyside	44	0.2%
Sunnyside HCS	9	0.0%
Toppenish	62	0.3%
Walla Walla	99	0.5%
Walla Walla HCS	5	0.0%
Walla Walla - Columbia	2	0.0%
Wapato	50	0.3%
Yakima	210	1.1%
Yakima-Ellensburg HCS	12	0.1%
Yakima – Kittitas	166	0.9%
<b>Region 2 Total</b>	<b>1,220</b>	<b>6.3%</b>

## General Assistance (GA-U and GA-X) Program

### GAU+X Caseload By DSHS Region and CSO, June 2001

Source: MRDA Tracking Using the CARD Database (October 2001 Load)

	Number of Cases	Percent of Cases
<b>Region 3</b>		
Alderwood	433	2.2%
Alderwood HCS	11	0.1%
Bellingham	661	3.4%
Bellingham HCS	6	0.0%
Everett	765	4.0%
Everett HCS	12	0.1%
Friday Harbor	19	0.1%
Mt. Vernon	323	1.7%
Mt. Vernon HCS	5	0.0%
Oak Harbor	124	0.6%
Skykomish HCS	2	0.0%
Skykomish Valley	250	1.3%
Smokey Point	398	2.1%
Smokey Point HCS	11	0.1%
<b>Region 3 Total</b>	<b>3,020</b>	<b>15.7%</b>
<b>Region 4</b>		
Auburn	3	0.0%
Belltown	1,034	5.4%
Burien	449	2.3%
Capitol Hill	558	2.9%
Federal Way	313	1.6%
Holgate	138	0.7%
King Eastside	439	2.3%
King North/Ballard	585	3.0%
King South	612	3.2%
Lake City	319	1.7%
Rainier	510	2.6%
Renton	356	1.8%
West Seattle	231	1.2%
<b>Region 4 Total</b>	<b>5,547</b>	<b>28.8%</b>
<b>Region 5</b>		
Bremerton	697	3.6%
Bremerton HCS	12	0.1%
Pierce North	587	3.0%
Pierce South	542	2.8%
Pierce West	651	3.4%
Puyallup HCS	21	0.1%
Puyallup	411	2.1%
Tacoma HCS	42	0.2%
<b>Region 5 Total</b>	<b>2,963</b>	<b>15.4%</b>

## General Assistance (GA-U and GA-X) Program

### GAU+X Caseload By DSHS Region and CSO, June 2001

Source: MRDA Tracking Using the CARD Database (October 2001 Load)

	Number of Cases	Percent of Cases
<b>Region 6</b>		
Aberdeen	214	1.1%
Aberdeen HCS	6	0.0%
Chehalis	252	1.3%
Chehalis HCS	8	0.0%
Forks	93	0.5%
Goldendale	50	0.3%
Home and Community Service	1	0.0%
Kelso	510	2.6%
Kelso – Long Beach HCS	4	0.0%
Long Beach	69	0.4%
Olympia	490	2.5%
Orchards	295	1.5%
Port Angeles	332	1.7%
Port Townsend	100	0.5%
Shelton	188	1.0%
South Bend	39	0.2%
Stevenson	38	0.2%
Tumwater HCS	12	0.1%
Vancouver	382	2.0%
Vancouver HCS	8	0.0%
White Salmon	23	0.1%
<b>Region 6 Total</b>	<b>3,114</b>	<b>16.2%</b>
<b>State Total</b>	<b>19,254</b>	<b>100.0%</b>



## General Assistance (GA-U and GA-X) Program

### GAU+X Caseload By County, June 2001

Source: MRDA tracking System using the CARD database (October 2001 Load)

	Number of Cases	Percent of Cases
Adams	15	0%
Asotin	76	0%
Benton	310	2%
Chelan	338	2%
Clallam	426	2%
Clark	685	4%
Columbia	2	0%
Cowlitz	514	3%
Douglas	62	0%
Ferry	58	0%
Franklin	173	1%
Garfield	2	0%
Grant	266	1%
Grays Harbor	220	1%
Island	124	1%
Jefferson	100	1%
King	5,547	29%
Kitsap	709	4%
Kittitas	48	0%
Klickitat	73	0%
Lewis	260	1%
Lincoln	31	0%
Mason	188	1%
Okanogan	288	1%
Pacific	108	1%
Pend Oreille	78	0%
Pierce	2,254	12%
San Juan	19	0%
Skagit	328	2%
Skamania	38	0%
Snohomish	1,882	10%
Spokane	1,887	10%
Stevens	225	1%
Thurston	502	3%
Wahkiakum	0	0%
Walla Walla	104	1%
Whatcom	667	3%
Whitman	65	0%
Yakima	582	3%
<b>State Total</b>	<b>19,254</b>	<b>100%</b>

**Note:** Cases are assigned to counties based on the location of the Community Service Office (CSO) where they are served. Some service areas overlap county boundaries, so counts here may not reflect counts based on county of residence.

## General Assistance (GA-U and GA-X) Program

### Demographics: All GA-U and GA-X Clients, June 2001

Source: MRDA Tracking Using the CARD Database (October 2001 Load)

Characteristic	All GA-U Clients (N= 12,250)		All GA-X Clients (N= 7,181)	
		Percent		Percent
<b>Gender</b>				
Female	5,393	44.0%	3,271	45.6%
Male	6,856	56.0%	3,909	54.4%
Unknown	1	0.0%	1	0.0%
<b>Race</b>				
White	8,579	70.0%	5,557	77.4%
Hispanic	675	5.5%	296	4.1%
Black	1,151	9.4%	655	9.1%
Asian/Pacific Islander	755	6.2%	176	2.5%
Native American	470	3.8%	235	3.3%
Unknown	620	5.1%	262	3.6%
<b>Marital Status</b>				
Separated	1,486	12.1%	851	11.9%
Married	1,042	8.5%	312	4.3%
Never Married	5,037	41.1%	3,117	43.4%
Divorced	3,761	30.7%	2,503	34.9%
Widow	660	5.4%	236	3.3%
Unknown	264	2.2%	162	2.3%
<b>Citizenship</b>				
U.S. Citizen	10,735	87.6%	6,885	95.9%
Resident Alien	1,496	12.2%	283	3.9%
U.S. National	17	0.1%	11	0.2%
Undocumented Alien	2	0.0%	2	0.0%
Unknown	0	0.0%	0	0.0%
<b>Age</b>				
< 17 Years Old	0	0.0%	0	0.0%
17 – 18 Years Old	65	0.5%	16	0.2%
19 – 20 Years Old	379	3.1%	152	2.1%
21 – 30 Years Old	1,842	15.0%	989	13.8%
31 – 40 Years Old	2,919	23.8%	1,565	21.8%
41 – 50 Years Old	2,043	16.7%	1,327	18.5%
51 – 55 Years Old	1,219	10.0%	1,062	14.8%
56 + Years Old	1,874	15.3%	647	9.0%
Unknown	1,909	15.6%	1,423	19.8%
Mean Age of Clients	43.5 Years Old		42.9 Years Old	
Median Age of Clients	43.5 Years Old		42.9 Years Old	

## General Assistance (GA-U and GA-X) Program

### Demographics: All GA-U and GA-X Clients, June 2001

Source: MRDA Tracking Using the CARD Database (October 2001 Load)

Characteristic	GA-U Clients		GA-X Clients	
	(N= 12,250)	Percent	(N= 7,181)	Percent
<b>Client Type</b>				
Adult	12,248	100.0%	7,181	100.0%
Child	0	0.0%	0	0.0%
SSI Child	2	0.0%	0	0.0%
<b>Limited in Life Activity<sup>1</sup></b>	8,361	68.3%	5,906	82.2%
<b>Limited in Work<sup>1</sup></b>	7,902	64.5%	5,810	80.9%
<b>Limited in English<sup>2</sup></b>	1,178	9.6%	254	3.5%
<b>DSHS Region</b>				
Region 1	2,207	18.0%	1,143	15.9%
Region 2	749	6.1%	452	6.3%
Region 3	1,870	15.3%	1,128	15.7%
Region 4	3,612	29.5%	1,870	26.0%
Region 5	1,693	13.8%	1,213	16.9%
Region 6	1,932	15.8%	1,158	16.1%
Other	187	1.5%	217	3.0%
<b>CSO Type</b>				
Urban	9,044	26.2%	5,320	74.1%
Rural	3,206	73.8%	1,861	25.9%

<sup>1</sup> Caseworkers ask whether a client is limited in a life activity (e.g., dressing or bathing) or limited in their ability to work. The questions are used to identify disabled adults.

<sup>2</sup> Limited in English is defined as a client whose primary language is not either English, Sign Language, Braille, or Large Print.