

# TANF and WorkFirst

The exhibits in this section summarize the TANF and WorkFirst caseload trends for SFY 2001.

In the following exhibits, we include both federally-funded TANF and state-funded SFA cases, unless otherwise noted.

### Highlights:

- ~~SES~~ **Washington's TANF/WorkFirst average monthly caseload declined to 54,753 in SFY 2001**, from a monthly average of 58,797 in SFY 2000. In June 2001, the caseload was lower still, at 54,608 cases.
- ~~SES~~ **The average payment per case in SFY 2001 was \$441.41.**
- ~~SES~~ **Child-only cases increased to 31.5% of the total TANF caseload in June 2001**, compared to 19.4% in July 1997.
- ~~SES~~ **Single-parent cases declined to 56.9% in June 2001**, compared to 68.5% of the total TANF caseload in July 1997.
- ~~SES~~ **Two-parent cases stayed about the same, at 11.6% of the TANF caseload in June 2001**, and 12.1% in July 1997.
- ~~SES~~ **In June 2001, 7% of TANF cases with adults were in sanction status.**
- ~~SES~~ **In June 2001, 92.8% of WorkFirst Adults participated in the WorkFirst Program.**
- ~~SES~~ **In April 2001, 19.9% of TANF Adults returned six months after an exit**, compared to 21.8% in July 1997. The percentage has ranged from a high of 22.1% to a low of 19.4% in SFY 2001.
- ~~SES~~ **In June 2001, the majority of TANF adult clients was female (79.7%), white (64.7%), and never married (44.2%). The median age for an adult was 30.1 years.**

## TANF/WorkFirst Program

### Selected TANF Program Characteristics SFY 2000 and SFY 2001

Source: Cases, Persons, and Expenditures Report (November 2001 Load)

|   | SFY00<br>(July 99 – June00)       | SFY01<br>(July 00 – June 01)    |
|---|-----------------------------------|---------------------------------|
| <b>Average Number of Cases Per Month (Range)</b>            | 58,797<br>(55,382 – 60,296)       | 54,753<br>(53,631 – 55,510)     |
| <b>Average Number of Persons Per Month (Range)</b>          | 158,416<br>(147,665 – 163,531)    | 143,773<br>(141,191 – 145,830)  |
| <b>Average Number of Adults Per Month (Range)</b>           | 50,257<br>(46,211 – 52,340)       | 44,632<br>(43,669 – 45,534)     |
| <b>Average Number of Children Per Month (Range)</b>         | 108,159<br>(101,454 – 111,191)    | 99,141<br>(97,522 – 100,296)    |
| <b>Recipients as a Percent of State's Total Population</b>  | 2.7%                              | 2.4%                            |
| <b>State Population<sup>1</sup></b>                         | 5,894,121                         | 5,974,900                       |
| <b>Children as a Percent of Recipients</b>                  | 68.3%                             | 68.9%                           |
| <b>Average Persons Per Case</b>                             | 2.7                               | 2.6                             |
| <b>Average Children Per Case</b>                            | 1.8                               | 1.8                             |
| <b>Average Children Per Adult</b>                           | 2.2                               | 2.2                             |
| <b>Average Monthly Payment Per Case (Range)<sup>2</sup></b> | \$441.42<br>(\$429.44 - \$446.25) | \$441.41<br>(\$437.27 – 445.37) |

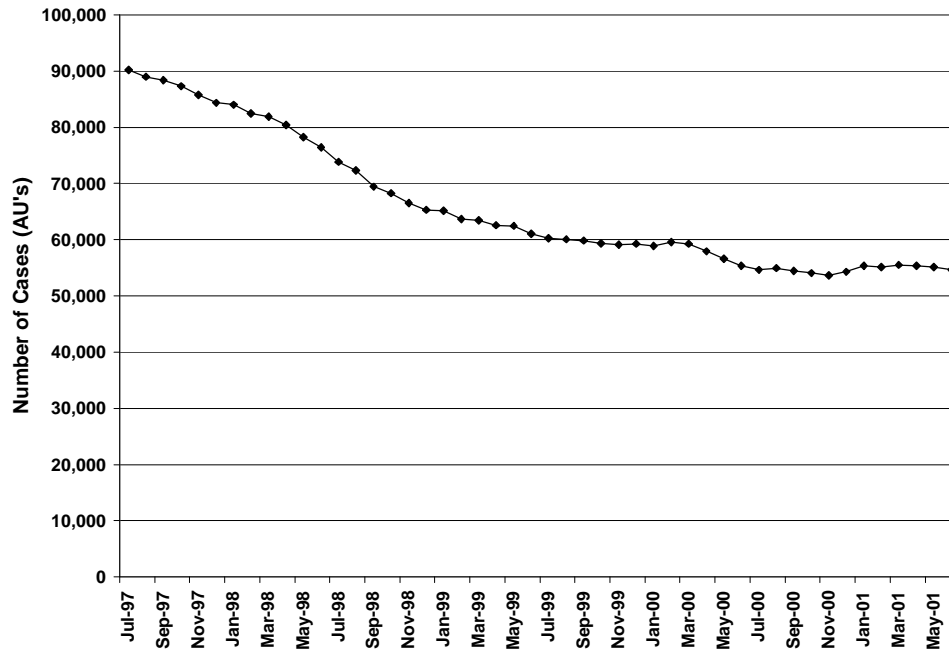
<sup>1</sup> OFM 2001 Population Trends for Washington State

<sup>2</sup> Payments are not adjusted for refunds.

## TANF/WorkFirst Program

### TANF Caseload, SFY 2001

Source: Cases, Persons, and Expenditures Report (November 2001 Load)



|                  | Cases  | Persons | Gross Expenditures | Recoveries   | Payment Per Case |
|------------------|--------|---------|--------------------|--------------|------------------|
| <b>Jul-97</b>    | 90,205 | 235,965 | \$43,056,002.33    | \$0.00       | \$477.31         |
| <b>July</b>      | 54,612 | 145,176 | \$24,322,352.11    | \$225,799.79 | \$445.37         |
| <b>August</b>    | 54,950 | 145,830 | \$24,318,251.90    | \$266,994.38 | \$442.55         |
| <b>September</b> | 54,436 | 143,942 | \$24,035,423.21    | \$252,825.28 | \$441.54         |
| <b>October</b>   | 54,045 | 142,754 | \$23,936,893.66    | \$245,194.04 | \$442.91         |
| <b>November</b>  | 53,631 | 141,191 | \$23,699,038.68    | \$252,170.87 | \$441.89         |
| <b>December</b>  | 54,274 | 142,717 | \$24,026,824.89    | \$217,167.29 | \$442.69         |
| <b>January</b>   | 55,335 | 145,189 | \$24,196,516.79    | \$232,941.17 | \$437.27         |
| <b>February</b>  | 55,122 | 144,096 | \$24,389,544.40    | \$265,498.05 | \$442.46         |
| <b>March</b>     | 55,510 | 144,827 | \$24,420,977.45    | \$309,696.54 | \$439.94         |
| <b>April</b>     | 55,367 | 144,228 | \$24,370,969.79    | \$226,966.64 | \$440.17         |
| <b>May</b>       | 55,150 | 143,478 | \$24,357,020.00    | \$249,593.91 | \$441.65         |
| <b>June</b>      | 54,608 | 141,842 | \$23,949,727.22    | \$247,303.00 | \$438.58         |

## TANF/WorkFirst Program

### TANF Caseload By Region and CSO, June 2001

Source: MRDA Tracking Using the CARD Database (October 2001 Load)

|                        | Number of<br>Cases | Percent of<br>Cases |
|------------------------|--------------------|---------------------|
| <b>Region 1</b>        |                    |                     |
| Clarkston              | 252                | 0.5%                |
| Colfax                 | 183                | 0.3%                |
| Davenport              | 74                 | 0.1%                |
| Moses Lake             | 1,001              | 1.8%                |
| Newport                | 214                | 0.4%                |
| Okanogan               | 677                | 1.2%                |
| Othello                | 269                | 0.5%                |
| Pomeroy                | 7                  | 0.0%                |
| Republic               | 163                | 0.3%                |
| Spokane Central        | 2                  | 0.0%                |
| Spokane North          | 2,275              | 4.2%                |
| Spokane Southwest      | 1,013              | 1.9%                |
| Spokane Valley         | 1,631              | 3.0%                |
| Tri County - Colville  | 542                | 1.0%                |
| Wenatchee - Chelan     | 684                | 1.3%                |
| Wenatchee - Douglas    | 204                | 0.4%                |
| <b>Region 1 Total</b>  | <b>9,191</b>       | <b>16.9%</b>        |
| <b>Region 2</b>        |                    |                     |
| Ellensburg             | 191                | 0.4%                |
| Grandview              | 283                | 0.5%                |
| Kennewick              | 1,395              | 2.6%                |
| Pasco                  | 849                | 1.6%                |
| Sunnyside              | 624                | 1.1%                |
| Toppenish              | 624                | 1.1%                |
| Walla Walla            | 525                | 1.0%                |
| Walla Walla - Columbia | 6                  | 0.0%                |
| Wapato                 | 436                | 0.8%                |
| Yakima                 | 1,416              | 2.6%                |
| Yakima – Kittitas      | 941                | 1.7%                |
| <b>Region 2 Total</b>  | <b>7,290</b>       | <b>13.4%</b>        |
| <b>Region 3</b>        |                    |                     |
| Alderwood              | 714                | 1.3%                |
| Bellingham             | 1,208              | 2.2%                |
| Everett                | 1,563              | 2.9%                |
| Friday Harbor          | 25                 | 0.0%                |
| Mt. Vernon             | 962                | 1.8%                |
| Oak Harbor             | 227                | 0.4%                |
| Skykomish Valley       | 348                | 0.6%                |
| Smokey Point           | 779                | 1.4%                |
| <b>Region 3 Total</b>  | <b>5,826</b>       | <b>10.7%</b>        |

## TANF/WorkFirst Program

### TANF Caseload By Region and CSO, June 2001

Source: MRDA Tracking Using the CARD Database (October 2001 Load)

|                       | Number of<br>Cases | Percent of<br>Cases |
|-----------------------|--------------------|---------------------|
| <b>Region 4</b>       |                    |                     |
| Auburn                | 938                | 1.7%                |
| Belltown              | 206                | 0.4%                |
| Burien                | 1,861              | 3.4%                |
| Capitol Hill          | 521                | 1.0%                |
| Federal Way           | 1,078              | 2.0%                |
| King Eastside         | 769                | 1.4%                |
| King North/Ballard    | 545                | 1.0%                |
| King South            | 1,485              | 2.7%                |
| Lake City             | 417                | 0.8%                |
| Rainier               | 1,574              | 2.9%                |
| Renton                | 1,133              | 2.1%                |
| West Seattle          | 937                | 1.7%                |
| <b>Region 4 Total</b> | <b>11,464</b>      | <b>21.0%</b>        |
| <b>Region 5</b>       |                    |                     |
| Bremerton             | 1,579              | 2.9%                |
| Pierce North          | 1,643              | 3.0%                |
| Pierce South          | 2,677              | 4.9%                |
| Pierce West           | 2,173              | 4.0%                |
| Puyallup              | 1,422              | 2.6%                |
| <b>Region 5 Total</b> | <b>9,494</b>       | <b>17.4%</b>        |
| <b>Region 6</b>       |                    |                     |
| Aberdeen              | 1,077              | 2.0%                |
| Chehalis              | 1,003              | 1.8%                |
| Forks                 | 280                | 0.5%                |
| Goldendale            | 169                | 0.3%                |
| Kelso                 | 1,623              | 3.0%                |
| Long Beach            | 123                | 0.2%                |
| Olympia               | 1,749              | 3.2%                |
| Orchards              | 1,697              | 3.1%                |
| Port Angeles          | 436                | 0.8%                |
| Port Townsend         | 172                | 0.3%                |
| Shelton               | 700                | 1.3%                |
| South Bend            | 115                | 0.2%                |
| Stevenson             | 107                | 0.2%                |
| Vancouver             | 1,920              | 3.5%                |
| White Salmon          | 92                 | 0.2%                |
| <b>Region 6 Total</b> | <b>11,265</b>      | <b>20.7%</b>        |
| <b>State Total</b>    | <b>54,530</b>      | <b>100.0%</b>       |

## TANF/WorkFirst Program

### TANF Caseload By County, June 2001

Source: MRDA tracking System using the CARD database (October 2001 Load)

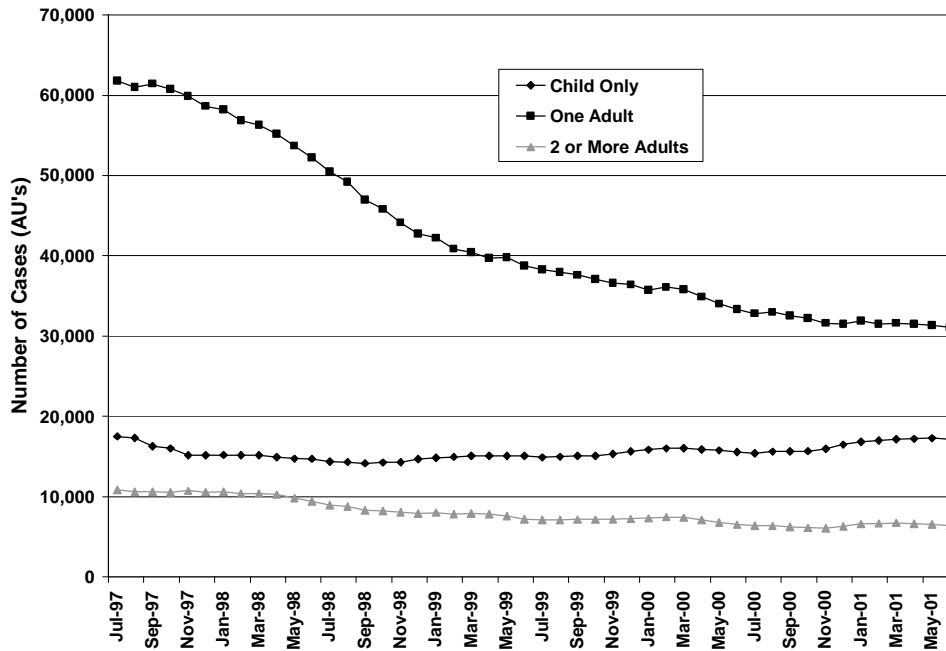
|                    | <b>Number of<br/>Cases</b> | <b>Percent of<br/>Cases</b> |
|--------------------|----------------------------|-----------------------------|
| Adams              | 269                        | 0.5%                        |
| Asotin             | 252                        | 0.5%                        |
| Benton             | 1,395                      | 2.6%                        |
| Chelan             | 684                        | 1.3%                        |
| Clallam            | 716                        | 1.3%                        |
| Clark              | 3,617                      | 6.6%                        |
| Columbia           | 6                          | 0.0%                        |
| Cowlitz            | 1,623                      | 3.0%                        |
| Douglas            | 204                        | 0.4%                        |
| Ferry              | 163                        | 0.3%                        |
| Franklin           | 849                        | 1.6%                        |
| Garfield           | 7                          | 0.0%                        |
| Grant              | 1,001                      | 1.8%                        |
| Grays Harbor       | 1,077                      | 2.0%                        |
| Island             | 227                        | 0.4%                        |
| Jefferson          | 172                        | 0.3%                        |
| King               | 11,464                     | 21.0%                       |
| Kitsap             | 1,579                      | 2.9%                        |
| Kittitas           | 191                        | 0.4%                        |
| Klickitat          | 261                        | 0.5%                        |
| Lewis              | 1,003                      | 1.8%                        |
| Lincoln            | 74                         | 0.1%                        |
| Mason              | 700                        | 1.3%                        |
| Okanogan           | 677                        | 1.2%                        |
| Pacific            | 238                        | 0.4%                        |
| Pend Oreille       | 214                        | 0.4%                        |
| Pierce             | 7,915                      | 14.5%                       |
| San Juan           | 25                         | 0.0%                        |
| Skagit             | 962                        | 1.8%                        |
| Skamania           | 107                        | 0.2%                        |
| Snohomish          | 3,404                      | 6.2%                        |
| Spokane            | 4,921                      | 9.0%                        |
| Stevens            | 542                        | 1.0%                        |
| Thurston           | 1,749                      | 3.2%                        |
| Wahkiakum          | 1                          | 0.0%                        |
| Walla Walla        | 525                        | 1.0%                        |
| Whatcom            | 1,208                      | 2.2%                        |
| Whitman            | 183                        | 0.3%                        |
| Yakima             | 4,324                      | 7.9%                        |
| <b>State Total</b> | <b>54,530</b>              | <b>100.0%</b>               |

**Note:** Cases are assigned to counties based on the location of the Community Service Office (CSO) where they are served. Some service areas overlap county boundaries, so counts here may not reflect counts based on county of residence.

## TANF/WorkFirst Program

### TANF Caseload By Number of Adults, SFY 2001

Source: MRDA Tracking Using the CARD Database (November 2001 Load)



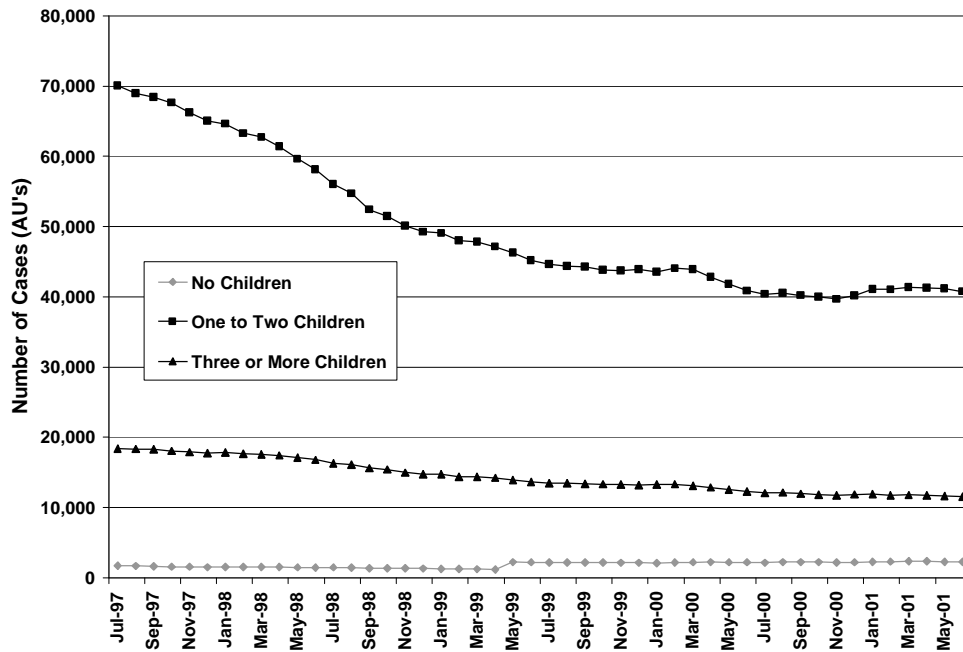
|               | Caseload | Child-Only |         | 1 Adult |         | 2 or More Adults |         |
|---------------|----------|------------|---------|---------|---------|------------------|---------|
|               |          | Number     | Percent | Number  | Percent | Number           | Percent |
| <b>Jul-97</b> | 90,205   | 17,511     | 19.4%   | 61,813  | 68.5%   | 10,881           | 12.1%   |
| <b>Jul-00</b> | 54,609   | 15,412     | 28.2%   | 32,819  | 60.1%   | 6,378            | 11.7%   |
| <b>Aug-00</b> | 54,949   | 15,615     | 28.4%   | 32,979  | 60.0%   | 6,355            | 11.6%   |
| <b>Sep-00</b> | 54,435   | 15,654     | 28.8%   | 32,544  | 59.8%   | 6,237            | 11.5%   |
| <b>Oct-00</b> | 54,042   | 15,684     | 29.0%   | 32,230  | 59.6%   | 6,128            | 11.3%   |
| <b>Nov-00</b> | 53,629   | 15,945     | 29.7%   | 31,613  | 58.9%   | 6,071            | 11.3%   |
| <b>Dec-00</b> | 54,273   | 16,482     | 30.4%   | 31,499  | 58.0%   | 6,292            | 11.6%   |
| <b>Jan-01</b> | 55,334   | 16,835     | 30.4%   | 31,885  | 57.6%   | 6,614            | 12.0%   |
| <b>Feb-01</b> | 55,122   | 16,976     | 30.8%   | 31,481  | 57.1%   | 6,665            | 12.1%   |
| <b>Mar-01</b> | 55,510   | 17,150     | 30.9%   | 31,619  | 57.0%   | 6,741            | 12.1%   |
| <b>Apr-01</b> | 55,367   | 17,197     | 31.1%   | 31,511  | 56.9%   | 6,659            | 12.0%   |
| <b>May-01</b> | 55,150   | 17,276     | 31.3%   | 31,339  | 56.8%   | 6,535            | 11.8%   |
| <b>Jun-01</b> | 54,608   | 17,178     | 31.5%   | 31,076  | 56.9%   | 6,354            | 11.6%   |

**Note:** Adults include teen parents.

## TANF/WorkFirst Program

### TANF Caseload By Number of Children, SFY 2001

Source: MRDA Tracking Using the CARD Database (November 2001 Load)



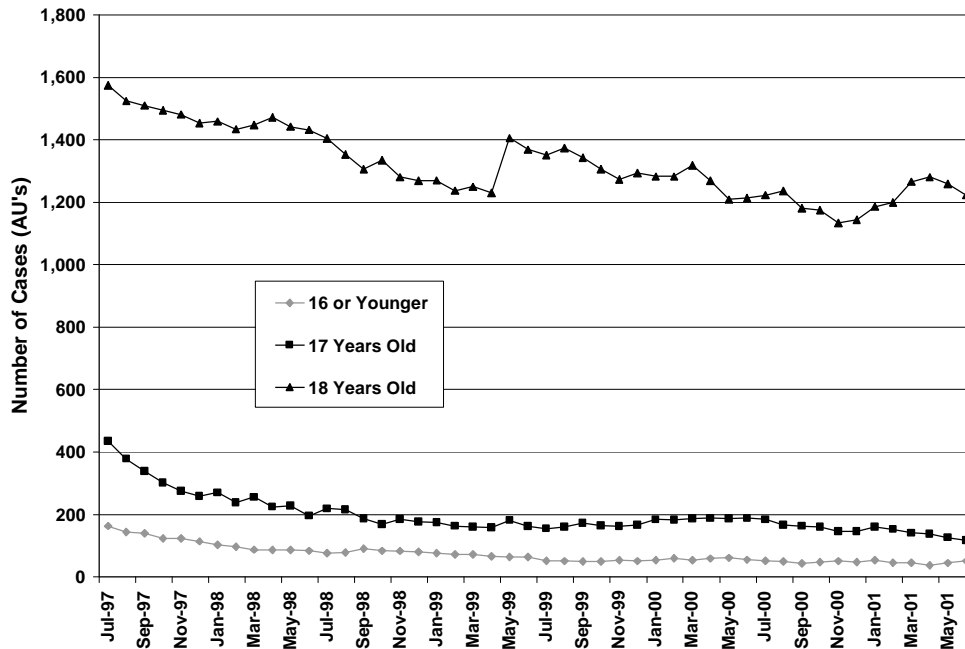
|               | Caseload | No Children <sup>1</sup> |         | 1 to 2 Children |         | 3 or More Children |         |
|---------------|----------|--------------------------|---------|-----------------|---------|--------------------|---------|
|               |          | Number                   | Percent | Number          | Percent | Number             | Percent |
| <b>Jul-97</b> | 90,205   | 1,738                    | 1.9%    | 70,051          | 77.7%   | 18,416             | 20.4%   |
| <b>Jul-00</b> | 54,609   | 2,137                    | 3.9%    | 40,401          | 74.0%   | 12,071             | 22.1%   |
| <b>Aug-00</b> | 54,949   | 2,235                    | 4.1%    | 40,570          | 73.8%   | 12,144             | 22.1%   |
| <b>Sep-00</b> | 54,435   | 2,237                    | 4.1%    | 40,219          | 73.9%   | 11,979             | 22.0%   |
| <b>Oct-00</b> | 54,042   | 2,231                    | 4.1%    | 39,981          | 74.0%   | 11,830             | 21.9%   |
| <b>Nov-00</b> | 53,629   | 2,199                    | 4.1%    | 39,684          | 74.0%   | 11,746             | 21.9%   |
| <b>Dec-00</b> | 54,273   | 2,205                    | 4.1%    | 40,178          | 74.0%   | 11,890             | 21.9%   |
| <b>Jan-01</b> | 55,334   | 2,285                    | 4.1%    | 41,094          | 74.3%   | 11,955             | 21.6%   |
| <b>Feb-01</b> | 55,122   | 2,326                    | 4.2%    | 41,033          | 74.4%   | 11,763             | 21.3%   |
| <b>Mar-01</b> | 55,510   | 2,354                    | 4.2%    | 41,353          | 74.5%   | 11,803             | 21.3%   |
| <b>Apr-01</b> | 55,367   | 2,337                    | 4.2%    | 41,286          | 74.6%   | 11,744             | 21.2%   |
| <b>May-01</b> | 55,150   | 2,300                    | 4.2%    | 41,165          | 74.6%   | 11,685             | 21.2%   |
| <b>Jun-01</b> | 54,608   | 2,276                    | 4.2%    | 40,776          | 74.7%   | 11,556             | 21.2%   |

On cases where the only children eligible for TANF already receive SSI, the child does not receive a TANF payment but the parent does receive a TANF payment. Also, a pregnant woman with no child is eligible for TANF.



## TANF/WorkFirst Program

**TANF Caseload With Teen Head of Household, SFY 2001**  
 Source: MRDA Tracking Using the CARD Database (November 2001 Load)



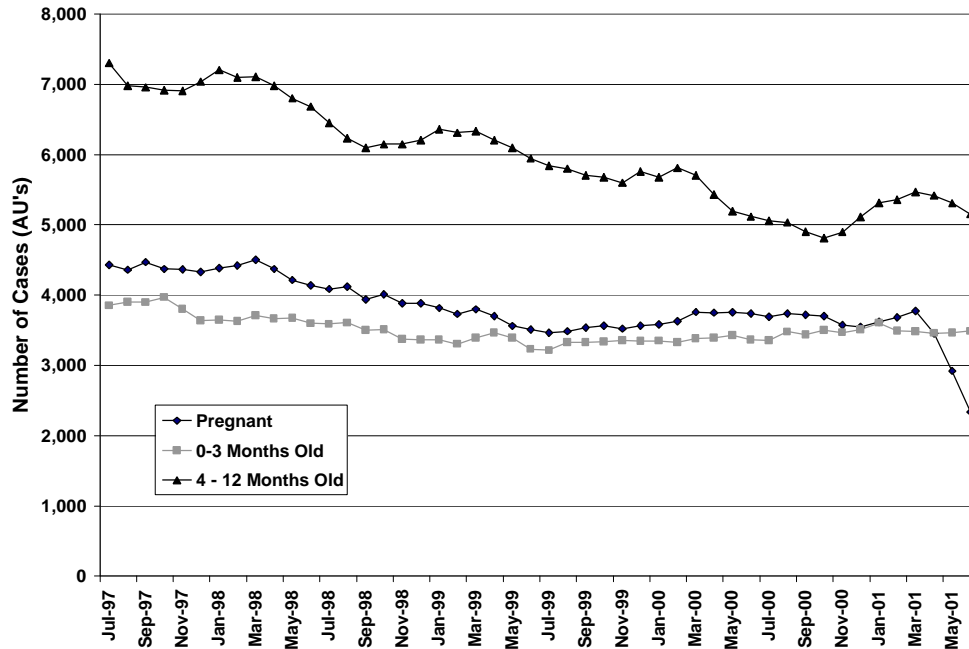
|               | Adult Caseload | Head of Household is 16 Years Old or Less |         | Head of Household is 17 Years Old |         | Head of Household is 18 Years Old |         |
|---------------|----------------|---|---------|-----------------------------------|---------|-----------------------------------|---------|
|               |                | Number                                    | Percent | Number                            | Percent | Number                            | Percent |
| <b>Jul-97</b> | 72,694         | 163                                       | 0.2%    | 435                               | 0.6%    | 1,575                             | 2.2%    |
| <b>Jul-00</b> | 39,197         | 52  | 0.1%    | 184                               | 0.5%    | 1,223                             | 3.1%    |
| <b>Aug-00</b> | 39,334         | 49  | 0.1%    | 167                               | 0.4%    | 1,236                             | 3.1%    |
| <b>Sep-00</b> | 38,781         | 43  | 0.1%    | 163                               | 0.4%    | 1,181                             | 3.0%    |
| <b>Oct-00</b> | 38,358         | 47  | 0.1%    | 160                               | 0.4%    | 1,175                             | 3.1%    |
| <b>Nov-00</b> | 37,684         | 51  | 0.1%    | 146                               | 0.4%    | 1,134                             | 3.0%    |
| <b>Dec-00</b> | 37,791         | 47  | 0.1%    | 146                               | 0.4%    | 1,144                             | 3.0%    |
| <b>Jan-01</b> | 38,499         | 53  | 0.1%    | 160                               | 0.4%    | 1,186                             | 3.1%    |
| <b>Feb-01</b> | 38,146         | 46  | 0.1%    | 153                               | 0.4%    | 1,200                             | 3.1%    |
| <b>Mar-01</b> | 38,360         | 46  | 0.1%    | 141                               | 0.4%    | 1,266                             | 3.3%    |
| <b>Apr-01</b> | 38,170         | 37  | 0.1%    | 138                               | 0.4%    | 1,281                             | 3.4%    |
| <b>May-01</b> | 37,874         | 45  | 0.1%    | 126                               | 0.3%    | 1,259                             | 3.3%    |
| <b>Jun-01</b> | 37,430         | 51  | 0.1%    | 118                               | 0.3%    | 1,223                             | 3.3%    |

**Note:** Adults include teen parents.

## TANF/WorkFirst Program

### TANF Caseload With Pregnant Women and Children 12 Months or Younger SFY 2001

Source: MRDA Tracking Using the CARD Database (November 2001 Load)



| Adult Caseload | Pregnant <sup>1</sup> |         | 0 – 3 Month Old Child |         | 4 – 12 Month Old Child |         |
|----------------|-----------------------|---------|-----------------------|---------|------------------------|---------|
|                | Number                | Percent | Number                | Percent | Number                 | Percent |
| <b>Jul-97</b>  | 72,694                | 6.1%    | 3,852                 | 5.3%    | 7,303                  | 10.0%   |
| <b>Jul-00</b>  | 39,197                | 9.4%    | 3,356                 | 8.6%    | 5,055                  | 12.9%   |
| <b>Aug-00</b>  | 39,334                | 9.5%    | 3,477                 | 8.8%    | 5,036                  | 12.8%   |
| <b>Sep-00</b>  | 38,781                | 9.6%    | 3,435                 | 8.9%    | 4,902                  | 12.6%   |
| <b>Oct-00</b>  | 38,358                | 9.7%    | 3,502                 | 9.1%    | 4,815                  | 12.6%   |
| <b>Nov-00</b>  | 37,684                | 9.5%    | 3,467                 | 9.2%    | 4,897                  | 13.0%   |
| <b>Dec-00</b>  | 37,791                | 9.4%    | 3,509                 | 9.3%    | 5,110                  | 13.5%   |
| <b>Jan-01</b>  | 38,499                | 9.4%    | 3,603                 | 9.4%    | 5,315                  | 13.8%   |
| <b>Feb-01</b>  | 38,146                | 9.6%    | 3,493                 | 9.2%    | 5,361                  | 14.1%   |
| <b>Mar-01</b>  | 38,360                | 9.8%    | 3,480                 | 9.1%    | 5,469                  | 14.3%   |
| <b>Apr-01</b>  | 38,170                | 9.0%    | 3,457                 | 9.1%    | 5,419                  | 14.2%   |
| <b>May-01</b>  | 37,874                | 7.7%    | 3,463                 | 9.1%    | 5,311                  | 14.0%   |
| <b>Jun-01</b>  | 37,430                | 6.2%    | 3,487                 | 9.3%    | 5,155                  | 13.8%   |

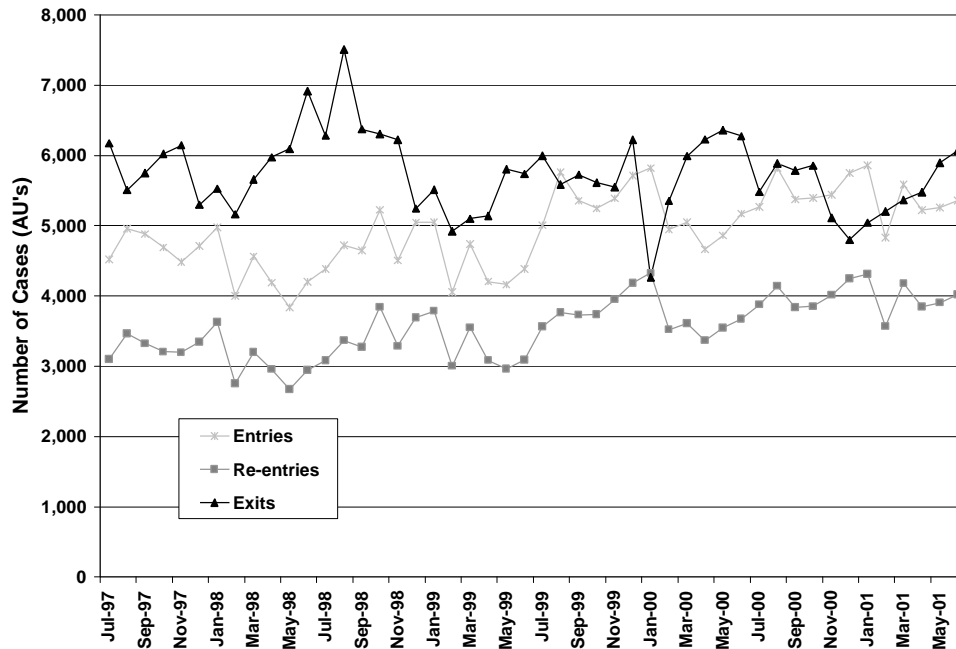
**Note:** Cases are unduplicated across groups. If a case has multiple young children or a pregnant recipient and a young child, the case category reflects the youngest child. Adults include teen parents.

<sup>1</sup> Pregnant women were identified using pregnancy status data entered in ACES.

## TANF/WorkFirst Program

### TANF Cases Entering, Re-Entering, and Exiting, SFY 2001

Source: MRDA Tracking Using the CARD Database (November 2001 Load)



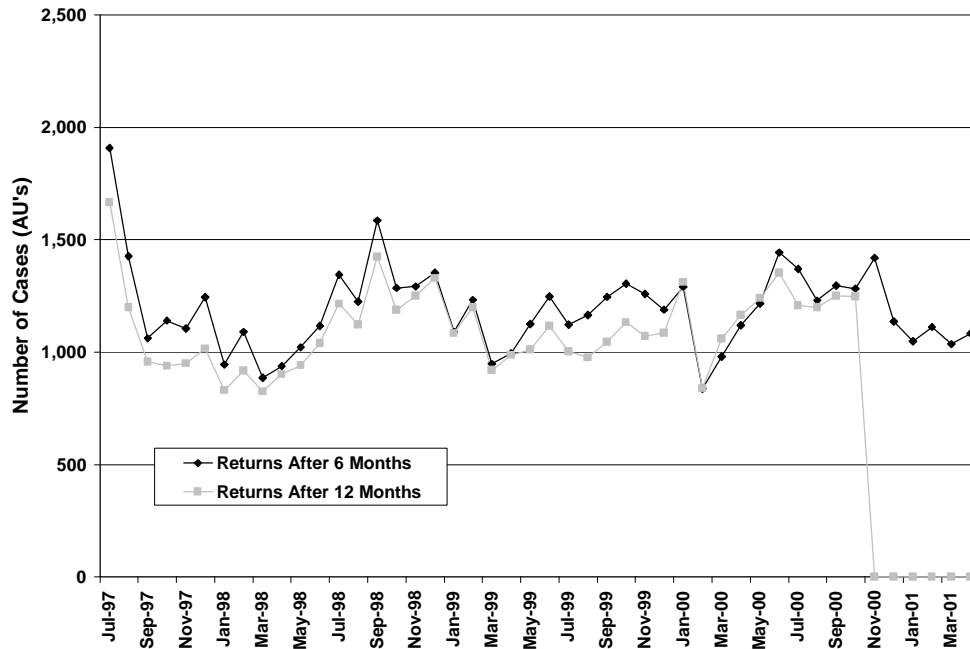
|               | Caseload | Entries |         | Re-Entries |         | Exits  |         |
|---------------|----------|---------|---------|------------|---------|--------|---------|
|               |          | Number  | Percent | Number     | Percent | Number | Percent |
| <b>Jul-97</b> | 90,205   | 4,519   | 5.0%    | 3,100      | 3.4%    | 6,176  | 6.8%    |
| <b>Jul-00</b> | 54,609   | 5,267   | 9.6%    | 3,878      | 7.1%    | 5,484  | 10.0%   |
| <b>Aug-00</b> | 54,949   | 5,822   | 10.6%   | 4,143      | 7.5%    | 5,889  | 10.7%   |
| <b>Sep-00</b> | 54,435   | 5,373   | 9.9%    | 3,840      | 7.1%    | 5,787  | 10.6%   |
| <b>Oct-00</b> | 54,042   | 5,394   | 10.0%   | 3,854      | 7.1%    | 5,855  | 10.8%   |
| <b>Nov-00</b> | 53,629   | 5,441   | 10.1%   | 4,013      | 7.5%    | 5,110  | 9.5%    |
| <b>Dec-00</b> | 54,273   | 5,753   | 10.6%   | 4,248      | 7.8%    | 4,800  | 8.8%    |
| <b>Jan-01</b> | 55,334   | 5,861   | 10.6%   | 4,313      | 7.8%    | 5,042  | 9.1%    |
| <b>Feb-01</b> | 55,122   | 4,829   | 8.8%    | 3,568      | 6.5%    | 5,202  | 9.4%    |
| <b>Mar-01</b> | 55,510   | 5,590   | 10.1%   | 4,179      | 7.5%    | 5,368  | 9.7%    |
| <b>Apr-01</b> | 55,367   | 5,225   | 9.4%    | 3,844      | 6.9%    | 5,477  | 9.9%    |
| <b>May-01</b> | 55,150   | 5,260   | 9.5%    | 3,905      | 7.1%    | 5,899  | 10.7%   |
| <b>Jun-01</b> | 54,608   | 5,357   | 9.8%    | 4,021      | 7.4%    | 6,070  | 11.1%   |

**Note:** Entries are defined as cases that were not on TANF the month prior to what is reported. Exits are defined as cases that received a benefit in the month reported, but not in the subsequent month. Re-entries are defined as cases that have been off TANF at least one month before re-entering TANF.

## TANF/WorkFirst Program

### Adults Returning to TANF Within Six Months and 12 Months After Exit, SFY 2001

Source: OFM Caseload Tracking Using the CARD Database and Eligibility File as of October 31, 2001.



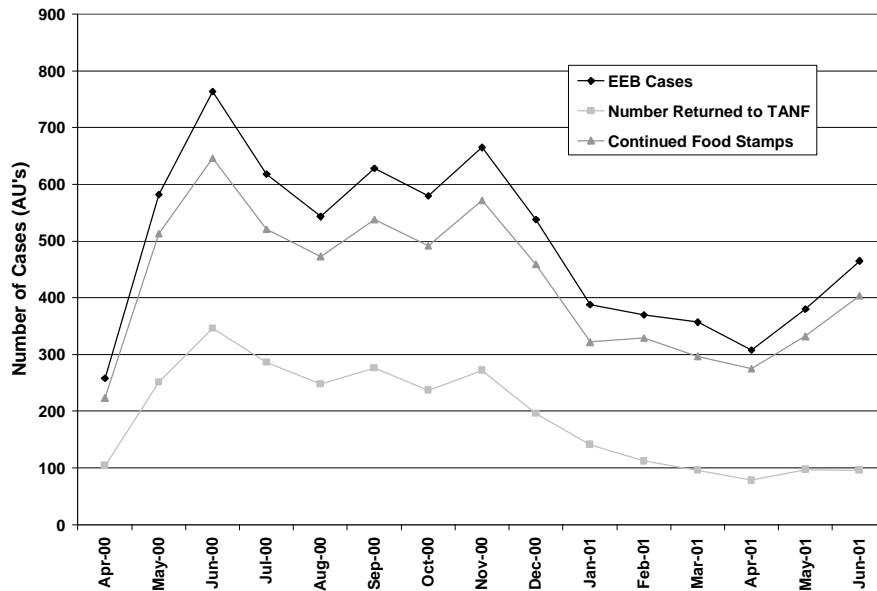
| Caseload | Return After 6 Months |         | Return After 12 Months |         |
|----------|-----------------------|---------|------------------------|---------|
|          | Number                | Percent | Number                 | Percent |
| Jul-97   | 1,907                 | 21.8    | 1,666                  | 19.0    |
| Jul-00   | 1,370                 | 22.0    | 1,207                  | 19.3    |
| Aug-00   | 1,229                 | 21.5    | 1,198                  | 21.0    |
| Sep-00   | 1,295                 | 20.7    | 1,249                  | 20.0    |
| Oct-00   | 1,282                 | 21.3    | 1,247                  | 20.7    |
| Nov-00   | 1,419                 | 22.1    | 0                      | 0.0     |
| Dec-00   | 1,136                 | 21.9    | 0                      | 0.0     |
| Jan-01   | 1,048                 | 21.1    | 0                      | 0.0     |
| Feb-01   | 1,112                 | 20.5    | 0                      | 0.0     |
| Mar-01   | 1,035                 | 19.4    | 0                      | 0.0     |
| Apr-01   | 1,083                 | 19.9    | 0                      | 0.0     |
| May-01   | 0                     | 0.0     | 0                      | 0.0     |
| Jun-01   | 0                     | 0.0     | 0                      | 0.0     |

**Note:** Table shows the number cases that have returned within six months or 12 months after exiting. For example, of all the cases exiting in April 2001, 1,083 or 19.9 percent of them returned after six months, in this case receiving TANF in October 2001. Adults include teen parents.

## TANF/WorkFirst Program

### TANF Persons Receiving the Early Exit Bonus April 2000 to June 2001

Source: MRDA Tracking Using the CARD Database (November 2001 Load)



|               | EEB Count | Returned To TANF <sup>1</sup> |         |                    | Continued Food Stamps <sup>2</sup> |         |
|---------------|-----------|-------------------------------|---------|--------------------|------------------------------------|---------|
|               |           | Number                        | Percent | Average Months Off | Number                             | Percent |
| <b>Apr-00</b> | 258       | 104                           | 40.3%   | 6                  | 224                                | 86.8%   |
| <b>May-00</b> | 582       | 251                           | 43.1%   | 7                  | 513                                | 88.1%   |
| <b>Jun-00</b> | 764       | 346                           | 45.3%   | 6                  | 646                                | 84.6%   |
| <b>Jul-00</b> | 618       | 286                           | 46.3%   | 5                  | 521                                | 84.3%   |
| <b>Aug-00</b> | 543       | 248                           | 45.7%   | 5                  | 473                                | 87.1%   |
| <b>Sep-00</b> | 628       | 276                           | 43.9%   | 5                  | 538                                | 85.7%   |
| <b>Oct-00</b> | 580       | 237                           | 40.9%   | 4                  | 492                                | 84.8%   |
| <b>Nov-00</b> | 665       | 272                           | 40.9%   | 4                  | 572                                | 86.0%   |
| <b>Dec-00</b> | 538       | 196                           | 36.4%   | 4                  | 459                                | 85.3%   |
| <b>Jan-01</b> | 388       | 141                           | 36.3%   | 4                  | 322                                | 83.0%   |
| <b>Feb-01</b> | 370       | 112                           | 30.3%   | 3                  | 329                                | 88.9%   |
| <b>Mar-01</b> | 357       | 96                            | 26.9%   | 3                  | 297                                | 83.2%   |
| <b>Apr-01</b> | 308       | 78                            | 25.3%   | 3                  | 275                                | 89.3%   |
| <b>May-01</b> | 380       | 97                            | 25.5%   | 2                  | 332                                | 87.4%   |
| <b>Jun-01</b> | 465       | 96                            | 20.6%   | 2                  | 404                                | 86.9%   |

**Note:** The Early Exit Bonus (EEB) began in April 2000 and is a once in a lifetime \$1,000 payment to participants who receive \$100 or less in TANF/SFA due to earnings and voluntarily terminates from assistance. It provides boost to meet work and work-related expenses while transitioning from TANF to employment.

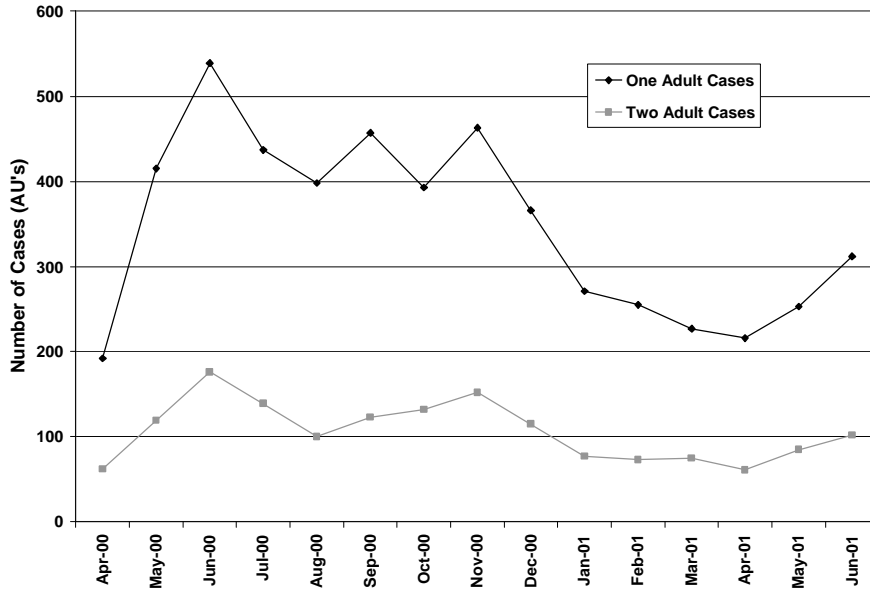
<sup>1</sup> Returned to TANF includes clients who received TANF in any month after receiving the E EB.

<sup>2</sup> Continued Food Stamps includes clients who received Food Stamps in the same month as the Early Exit Bonus regardless of whether they received Food Stamps in subsequent months.

## TANF/WorkFirst Program

### Clients Receiving the Early Exit Bonus, By Case Type April 2000 Through June 2001

Source: MRDA Tracking Using the CARD Database (November 2001 Load)



|               | Clients on Cases With One Adult |         | Clients on Cases With Two or More Adults |         |
|---------------|---------------------------------|---------|--|---------|
|               | Number                          | Percent | Number                                   | Percent |
| <b>Apr-00</b> | 192                             | 74.4%   | 62                                       | 24.0%   |
| <b>May-00</b> | 415                             | 71.3%   | 119                                      | 20.4%   |
| <b>Jun-00</b> | 539                             | 70.5%   | 176                                      | 23.0%   |
| <b>Jul-00</b> | 437                             | 70.7%   | 139                                      | 22.5%   |
| <b>Aug-00</b> | 398                             | 73.3%   | 100                                      | 18.4%   |
| <b>Sep-00</b> | 457                             | 72.8%   | 123                                      | 19.6%   |
| <b>Oct-00</b> | 393                             | 67.8%   | 132                                      | 22.8%   |
| <b>Nov-00</b> | 463                             | 69.6%   | 152                                      | 22.9%   |
| <b>Dec-00</b> | 366                             | 68.0%   | 115                                      | 21.4%   |
| <b>Jan-01</b> | 271                             | 69.8%   | 77                                       | 19.8%   |
| <b>Feb-01</b> | 255                             | 68.9%   | 73                                       | 19.7%   |
| <b>Mar-01</b> | 227                             | 63.6%   | 75                                       | 21.0%   |
| <b>Apr-01</b> | 216                             | 70.1%   | 61                                       | 19.8%   |
| <b>May-01</b> | 253                             | 66.6%   | 85                                       | 22.4%   |
| <b>Jun-01</b> | 312                             | 67.1%   | 102                                      | 21.9%   |

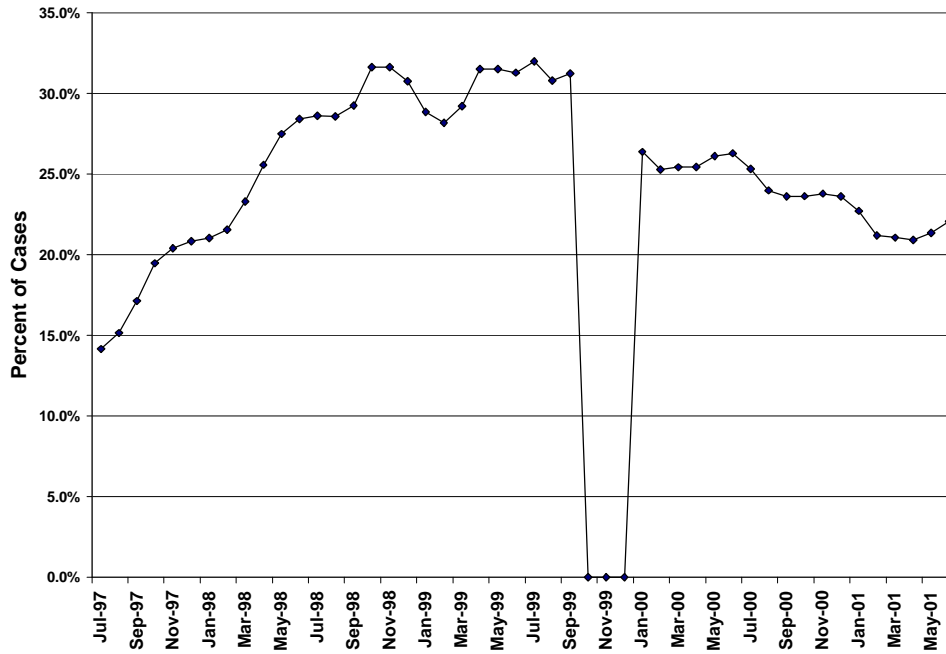
**Note:** The Early Exit Bonus (EEB) began in April 2000 and is a once in a lifetime \$1,000 payment to participants who receive \$100 or less in TANF/SFA due to earnings and voluntarily terminates from assistance. It provides boost to meet work and work-related expenses while transitioning from TANF to employment.

<sup>1</sup> The case type is the number of adult recipients (including teen parents) on the case.

## TANF/WorkFirst Program

### Employed TANF Adults, SFY 2001

Source: MRDA Tracking Using the CARD Database (November 2001 Load)



|               | TANF Adults | Employed Number | Employed Percent | Avg. Hours Worked | Avg. Hourly Earnings |
|---------------|-------------|-----------------|------------------|-------------------|----------------------|
| <b>Jul-97</b> | 83,551      | 11,835          | 14.2%            | 81                | \$6.56               |
| <b>Jul-00</b> | 45,568      | 11,537          | 25.3%            | 78                | \$8.12               |
| <b>Aug-00</b> | 45,674      | 10,959          | 24.0%            | 78                | \$8.03               |
| <b>Sep-00</b> | 45,015      | 10,631          | 23.6%            | 78                | \$8.15               |
| <b>Oct-00</b> | 44,474      | 10,511          | 23.6%            | 77                | \$8.27               |
| <b>Nov-00</b> | 43,748      | 10,411          | 23.8%            | 76                | \$8.35               |
| <b>Dec-00</b> | 44,076      | 10,412          | 23.6%            | 74                | \$8.43               |
| <b>Jan-01</b> | 45,110      | 10,249          | 22.7%            | 73                | \$8.41               |
| <b>Feb-01</b> | 44,810      | 9,501           | 21.2%            | 73                | \$8.59               |
| <b>Mar-01</b> | 45,093      | 9,499           | 21.1%            | 72                | \$8.66               |
| <b>Apr-01</b> | 44,820      | 9,372           | 20.9%            | 72                | \$8.53               |
| <b>May-01</b> | 44,398      | 9,484           | 21.4%            | 71                | \$8.67               |
| <b>Jun-01</b> | 43,781      | 9,667           | 22.1%            | 71                | \$8.65               |

**Note:** Employment is identified using data in the ACES system. Adults include teen parents. Also note that in January 2000, ESA switched from retrospective budgeting to prospective budgeting. Because of that change, October 1999 – December 1999 income was not used to budget benefit amounts. Therefore, employment data for those months is considered unreliable.

## TANF/WorkFirst Program

### TANF Cases With Adults in WorkFirst Sanction Status, SFY 2001

Source: MRDA Tracking Using the CARD Database (November 2001 Load)

|               | TANF<br>Cases<br>With<br>Adults | Cases<br>Sanctioned | Percent of<br>Cases<br>Sanctioned |
|---------------|---------------------------------|---------------------|-----------------------------------|
| <b>Jul-00</b> | 39,197                          | 1,991               | 5.1%                              |
| <b>Aug-00</b> | 39,334                          | 2,081               | 5.3%                              |
| <b>Sep-00</b> | 38,781                          | 2,208               | 5.7%                              |
| <b>Oct-00</b> | 38,358                          | 2,076               | 5.4%                              |
| <b>Nov-00</b> | 37,684                          | 2,235               | 5.9%                              |
| <b>Dec-00</b> | 37,791                          | 2,274               | 6.0%                              |
| <b>Jan-01</b> | 38,499                          | 2,299               | 6.0%                              |
| <b>Feb-01</b> | 38,146                          | 2,397               | 6.3%                              |
| <b>Mar-01</b> | 38,360                          | 2,499               | 6.5%                              |
| <b>Apr-01</b> | 38,170                          | 2,549               | 6.7%                              |
| <b>May-01</b> | 37,874                          | 2,617               | 6.9%                              |
| <b>Jun-01</b> | 37,430                          | 2,638               | 7.0%                              |

Note: Adults include teen parents.

### TANF Cases With Adults in WorkFirst Sanction Status By Consecutive Months in Sanctioned Status, SFY 2001

Source: MRDA Tracking Using the CARD Database (November 2001 Load)

|               | Cases<br>Sanctioned | First Month |         | Second Month |         | Third Month or Later |         |
|---------------|---------------------|-------------|---------|--------------|---------|----------------------|---------|
|               |                     | Number      | Percent | Number       | Percent | Number               | Percent |
| <b>Jul-00</b> | 1,991               | 720         | 36.2%   | 672          | 33.8%   | 599                  | 30.1%   |
| <b>Aug-00</b> | 2,081               | 773         | 37.1%   | 712          | 34.2%   | 596                  | 28.6%   |
| <b>Sep-00</b> | 2,208               | 869         | 39.4%   | 750          | 34.0%   | 589                  | 26.7%   |
| <b>Oct-00</b> | 2,076               | 660         | 31.8%   | 808          | 38.9%   | 608                  | 29.3%   |
| <b>Nov-00</b> | 2,235               | 937         | 41.9%   | 700          | 31.3%   | 598                  | 26.8%   |
| <b>Dec-00</b> | 2,274               | 854         | 37.6%   | 799          | 35.1%   | 621                  | 27.3%   |
| <b>Jan-01</b> | 2,299               | 817         | 35.5%   | 861          | 37.5%   | 621                  | 27.0%   |
| <b>Feb-01</b> | 2,397               | 903         | 37.7%   | 828          | 34.5%   | 666                  | 27.8%   |
| <b>Mar-01</b> | 2,499               | 940         | 37.6%   | 852          | 34.1%   | 707                  | 28.3%   |
| <b>Apr-01</b> | 2,549               | 939         | 36.8%   | 895          | 35.1%   | 715                  | 28.1%   |
| <b>May-01</b> | 2,617               | 979         | 37.4%   | 905          | 34.6%   | 733                  | 28.0%   |
| <b>Jun-01</b> | 2,638               | 967         | 36.7%   | 934          | 35.4%   | 737                  | 27.9%   |

Note: Adults include teen parents.



## TANF/WorkFirst Program

### TANF Adults and Their WorkFirst Participation Status in June 2001

Source: JAS/JFS Report JASB09P2-2

|   | Number | Percent |
|---|--------|---------|
| <b>Total Number of WorkFirst Adults</b>                               | 35,093 | 100%    |
| <b>Adults <u>Not Ready</u> to Participate in WorkFirst Activities</b> | 7,567  | 21.6%   |
| <b>Adults <u>Ready</u> to Participate in WorkFirst Activities</b>     | 27,526 | 78.4%   |

**Note:** Adult counts differ from other tables because JASB09P2-2 excludes adults that are receiving their last month of benefits. Participation is state, not federal definition. Adults include teen parents.

### TANF Adults Ready to Participate in WorkFirst Activities in June 2001

Source: JAS/JFS Report JASB09P2-2

|  | Number        | Percent of<br>Those<br>Ready To<br>Participate |
|--|---------------|--|
| <b>Total Number of WorkFirst Adults Ready to Participate</b> | 27,526        | 100.0%   |
| <b><i>Ready - Participating</i></b>                          | <b>25,545</b> | <b>92.8%</b>                                   |
| Working  | 9,249         | 33.6%  |
| Preparing For Work   | 7,933         | 28.8%  |
| Looking For Work   | 5,308         | 19.3%  |
| Short Term Sanction (Under 3 Months)                         | 3,055         | 11.1%  |
| <b><i>Ready – Not Participating</i></b>                      | <b>1,981</b>  | <b>7.2%</b>                                    |
| No Countable Activity  | 878           | 3.2%   |
| Referral Only  | 704           | 2.6%   |
| Long Term Sanction (Over 3 Months)                           | 399           | 1.4%   |

**Note:** Participation is state, not federal definition.

## TANF/WorkFirst Program

### WorkFirst Participation Rates and Targets of Those Adults Ready to Participate SFY 2001

Source: JAS/JFS Report JASB09P2-2

|               | WF Adults<br>Ready to<br>Participate | Participating<br>Adults | Participation<br>Rate | Target <sup>1</sup> |
|---------------|--------------------------------------|-------------------------|-----------------------|---------------------|
| <b>Jul-00</b> | 27,294                               | 25,306                  | 92.7%                 | 87.5%               |
| <b>Aug-00</b> | 26,373                               | 24,451                  | 92.7%                 | 87.5%               |
| <b>Sep-00</b> | 26,425                               | 24,147                  | 91.4%                 | 87.5%               |
| <b>Oct-00</b> | 26,976                               | 24,924                  | 92.4%                 | 87.5%               |
| <b>Nov-00</b> | 26,712                               | 24,280                  | 90.9%                 | 87.5%               |
| <b>Dec-00</b> | 27,212                               | 24,684                  | 90.7%                 | 87.5%               |
| <b>Jan-01</b> | 29,585                               | 26,959                  | 91.1%                 | 87.5%               |
| <b>Feb-01</b> | 28,570                               | 26,372                  | 92.3%                 | 87.5%               |
| <b>Mar-01</b> | 28,569                               | 26,552                  | 92.9%                 | 87.5%               |
| <b>Apr-01</b> | 29,119                               | 26,934                  | 92.5%                 | 87.5%               |
| <b>May-01</b> | 27,995                               | 26,078                  | 93.2%                 | 87.5%               |
| <b>Jun-01</b> | 27,526                               | 25,545                  | 92.8%                 | 87.5%               |

<sup>1</sup> Source: ESA Performance Measure.

### TANF Adults NOT Ready to Participate in WorkFirst Activities in June 2001

Source: JAS/JFS Report JASB09P2-2

|  | Number | Percent<br>of Total<br>WF<br>Adults |
|--|--------|-------------------------------------|
| <b>Total Number of WorkFirst Adults NOT Ready to Participate</b> | 7,567  | 21.6%                               |
| <b>Caring for a Child Under 3 Months of Age</b>                  | 195    | 0.6%                                |
| <b>Pursuing Other Benefits (XB)</b>                              | 1,783  | 5.1%                                |
| <b>No Care Available / Child or Incapacitated Adult (XC)</b>     | 758    | 2.2%                                |
| <b>Treatment / Temporary Incapacity (XM)</b>                     | 2,702  | 7.7%                                |
| <b>Family Violence Intervention (XF)</b>                         | 148    | 0.4%                                |
| <b>DVR/DDD Plan (XD)</b>   | 30     | 0.1%                                |
| <b>Homelessness Resolution (XH)</b>                              | 237    | 0.7%                                |
| <b>Caring For a Child/Special Needs (XN)</b>                     | 177    | 0.5%                                |
| <b>Parenting Skills &amp; Family Planning (XP)</b>               | 1,489  | 4.2%                                |
| <b>Age 55 &amp; Over Relative Caretaker (XR)</b>                 | 48     | 0.1%                                |

## TANF/WorkFirst Program

### TANF Client Demographics, June 2001

Source: MRDA Tracking Using the CARD Database

| Characteristic                      | All TANF Clients<br>(N=144,045) |         | All TANF Adults<br>(N=43,795) |         |
|-------------------------------------|---------------------------------|---------|-------------------------------|---------|
|                                     |                                 | Percent |                               | Percent |
| <b>Gender</b>                       |                                 |         |                               |         |
| Female                              | 84,757                          | 58.8%   | 34,924                        | 79.7%   |
| Male                                | 59,288                          | 41.2%   | 8,871                         | 20.3%   |
| Unknown                             | 0                               | 0.0%    | 0                             | 0.0%    |
| <b>Race</b>                         |                                 |         |                               |         |
| White                               | 83,336                          | 57.9%   | 28,355                        | 64.7%   |
| Hispanic                            | 20,080                          | 13.9%   | 4,025                         | 9.2%    |
| Black                               | 19,012                          | 13.2%   | 5,355                         | 12.2%   |
| Asian/Pacific Islander              | 5,862                           | 4.1%    | 1,698                         | 3.9%    |
| Native American                     | 7,087                           | 4.9%    | 2,247                         | 5.1%    |
| Unknown                             | 8,668                           | 6.0%    | 2,115                         | 4.8%    |
| <b>Marital Status (Adults Only)</b> |                                 |         |                               |         |
| Separated                           | 6,328                           | 14.4%   | 6,328                         | 14.4%   |
| Married                             | 11,180                          | 25.5%   | 11,180                        | 25.5%   |
| Never Married                       | 19,365                          | 44.2%   | 19,365                        | 44.2%   |
| Divorced                            | 6,316                           | 14.4%   | 6,316                         | 14.4%   |
| Widow                               | 323                             | 0.7%    | 323                           | 0.7%    |
| Unknown                             | 283                             | 0.6%    | 283                           | 0.6%    |
| <b>Citizenship</b>                  |                                 |         |                               |         |
| U.S. Citizen                        | 130,369                         | 90.5%   | 38,087                        | 87.0%   |
| Resident Alien                      | 13,129                          | 9.1%    | 5,614                         | 12.8%   |
| U.S. National                       | 182                             | 0.1%    | 70                            | 0.2%    |
| U.S. Born Child of Refugee          | 346                             | 0.2%    | 10                            | 0.0%    |
| Undocumented Alien                  | 19                              | 0.0%    | 14                            | 0.0%    |
| Unknown                             | 0                               | 0.0%    | 0                             | 0.0%    |
| <b>Age</b>                          |                                 |         |                               |         |
| < 17 Years Old                      | 95,855                          | 66.5%   | 70                            | 0.2%    |
| 17 – 18 Years Old                   | 5,744                           | 4.0%    | 1,459                         | 3.3%    |
| 19 – 20 Years Old                   | 4,040                           | 2.8%    | 3,863                         | 8.8%    |
| 21 – 30 Years Old                   | 18,002                          | 12.5%   | 18,000                        | 41.1%   |
| 31 – 40 Years Old                   | 13,441                          | 9.3%    | 13,440                        | 30.7%   |
| 41 – 50 Years Old                   | 3,933                           | 2.7%    | 3,933                         | 9.0%    |
| 51 – 55 Years Old                   | 720                             | 0.5%    | 720                           | 1.6%    |
| 56 + Years Old                      | 399                             | 0.3%    | 399                           | 0.9%    |
| Unknown                             | 1,911                           | 1.3%    | 1,911                         | 4.4%    |
| Mean Age of Children                | 7.9 Years Old                   |         | N/A                           |         |
| Median Age of Children              | 7.6 Years Old                   |         | N/A                           |         |
| Mean Age of Adults                  | 31.3 Years Old                  |         | 31.3 Years Old                |         |
| Median Age of Adults                | 30.1 Years Old                  |         | 30.1 Years Old                |         |

## TANF/WorkFirst Program

### TANF Client Demographics, June 2001

Source: MRDA Tracking Using the CARD Database

| Characteristic                                 | All TANF Clients<br>(N=144,045) |         | All TANF Adults<br>(N=43,795) |         |
|--|---------------------------------|---------|-------------------------------|---------|
|  |                                 | Percent |                               | Percent |
| <b>Client Type</b>                             |                                 |         |                               |         |
| Adult  | 43,795                          | 30.4%   | 43,795                        | 100.0%  |
| Child  | 98,117                          | 68.1%   | 0                             | 0.0%    |
| SSI Child                                      | 2,133                           | 1.5%    | 0                             | 0.0%    |
| <b>Limited in Life Activity<sup>1</sup></b>    |                                 |         |                               |         |
|  | 5,643                           | 3.9%    | 3,289                         | 7.5%    |
| <b>Limited in Work<sup>1</sup></b>             |                                 |         |                               |         |
|  | 5,482                           | 3.8%    | 3,204                         | 7.3%    |
| <b>Limited in English<sup>2</sup></b>          |                                 |         |                               |         |
|  | 22,272                          | 15.5%   | 4,923                         | 11.2%   |
| <b>DSHS Region</b>                             |                                 |         |                               |         |
| Region 1                                       | 24,517                          | 17.0%   | 7,890                         | 18.0%   |
| Region 2                                       | 19,621                          | 13.6%   | 5,109                         | 11.7%   |
| Region 3                                       | 14,907                          | 10.3%   | 4,646                         | 10.6%   |
| Region 4                                       | 31,159                          | 21.6%   | 9,380                         | 21.4%   |
| Region 5                                       | 24,472                          | 17.0%   | 7,606                         | 17.4%   |
| Region 6                                       | 29,192                          | 20.3%   | 9,141                         | 20.9%   |
| Other  | 177                             | 0.1%    | 23                            | 0.1%    |
| <b>CSO Type</b>                                |                                 |         |                               |         |
| Urban  | 103,119                         | 28.4%   | 12,205                        | 27.9%   |
| Rural  | 40,926                          | 71.6%   | 31,590                        | 72.1%   |
| <b>Avg. Months on Assistance<sup>3</sup></b>   |                                 |         |                               |         |
|  |                                 | N/A     | 20 Months                     |         |
| <b>Median Months on Assistance<sup>3</sup></b> |                                 |         |                               |         |
|  |                                 | N/A     | 16 Months                     |         |

<sup>1</sup> Caseworkers ask whether a client is limited in a life activity (e.g., dressing or bathing) or limited in their ability to work. The questions are used to identify disabled clients.

<sup>2</sup> A client is included in Limited English if the Head of Household for the Assistance Unit has indicated he/she wants to receive materials in a language other than English.

<sup>3</sup> Months on Assistance is defined as the number of months an adult has been on assistance since August 1997.