

### TANF and WorkFirst

The exhibits in this section summarize the TANF and WorkFirst caseload trends for SFY 2002.

In the following exhibits, we include both federally-funded TANF and state-funded SFA cases, unless otherwise noted.

#### Highlights:

- **Washington's TANF/WorkFirst average monthly caseload increased to 55,068 in SFY 2002**, from a monthly average of 54,753 in SFY 2001. In June 2002, the caseload was lower, at 53,121 cases.
- **The average payment per case in SFY 2002 was \$438.84.**
- **Child-only cases increased to 34.8% of the total TANF caseload** in June 2002, compared to 31.5% in June 2001.
- **Single-parent cases declined to 54.4% in June 2002**, compared to 56.9% of the total TANF caseload in June 2001.
- **Two-parent cases declined to 10.8% of the TANF caseload in June 2002**, compared to 11.6% in June 2001.
- **In June 2002, 11.9% of TANF cases with adults were in sanction status.**
- **In June 2002, 92.3% of WorkFirst adults ready to participate in WorkFirst, participated in the WorkFirst Program.**
- **In April 2002, 17.9% of TANF Adults returned six months after an exit**, compared to 19.9% in July 1997. The percentage has ranged from a high of 22.4% to a low of 17.1% in SFY 2002.
- **In June 2002, the majority of TANF adult clients were female (80.0%), white (63.7%), and not married (75.5%). The median age for an adult was 29.7 years.**

## TANF/WorkFirst Program

### Selected TANF Program Characteristics SFY 2001 and SFY 2002

Source: Cases, Persons, and Expenditures Report From the ACES Data Warehouse

	SFY01 (July 00 – June 01)	SFY02 (July 01 – June 02)
<b>Average Number of Cases Per Month (Range)</b>	54,753 (53,631 – 55,510)	55,068 (53,121 – 57,428)
<b>Average Number of Persons Per Month (Range)</b>	143,773 (141,191 – 145,830)	141,114 (133,864 – 147,486)
<b>Average Number of Adults Per Month (Range)</b>	44,632 (43,669 – 45,534)	43,415 (40,388 – 45,662)
<b>Average Number of Children Per Month (Range)</b>	99,141 (97,522 – 100,296)	97,699 (93,476 – 101,824)
<b>Recipients as a Percent of State's Total Population</b>	2.4%	2.3%
<b>State Population<sup>1</sup></b>	5,974,900	6,041,700
<b>Children as a Percent of Recipients</b>	68.9%	69.2%
<b>Average Persons Per Case</b>	2.6	2.6
<b>Average Children Per Case</b>	1.8	1.8
<b>Average Children Per Adult</b>	2.2	2.3
<b>Average Monthly Payment Per Case (Range)<sup>2</sup></b>	\$441.41 (\$437.27 – 445.37)	\$438.84 (\$435.36 - \$441.70)

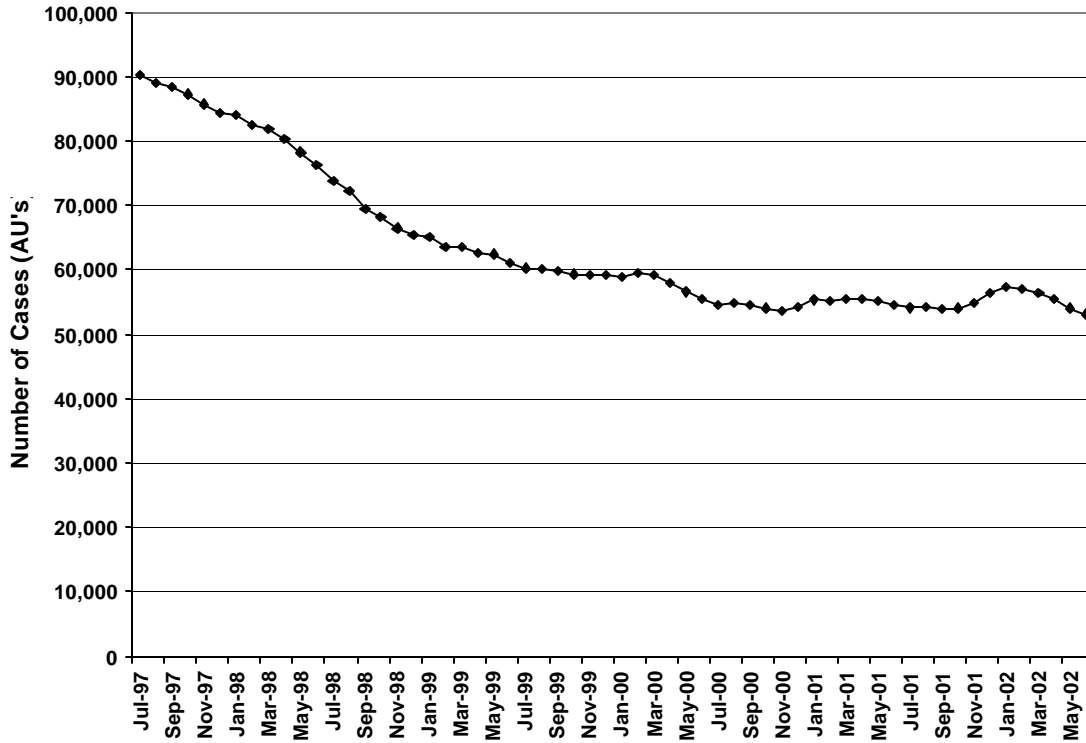
<sup>1</sup> OFM 2002 Population Trends for Washington State

<sup>2</sup> Payments are not adjusted for refunds.

## TANF/WorkFirst Program

### TANF Caseload, SFY 2002

Source: Cases, Persons, and Expenditures Report From the ACES Data Warehouse



	Cases	Persons	Grant Expenditures	Recoveries	Payment Per Case
<b>July</b>	54,095	140,241	\$23,633,628.59	\$190,279.85	\$436.89
<b>August</b>	54,261	140,204	\$23,937,255.24	\$226,508.71	\$441.15
<b>September</b>	53,813	139,061	\$23,530,708.59	\$194,993.13	\$437.27
<b>October</b>	54,050	139,560	\$23,821,518.43	\$225,064.47	\$440.73
<b>November</b>	54,763	140,773	\$23,941,864.49	\$182,251.43	\$437.19
<b>December</b>	56,301	144,735	\$24,681,480.59	\$166,627.29	\$438.38
<b>January</b>	57,428	147,486	\$25,117,841.98	\$202,690.53	\$437.38
<b>February</b>	56,981	145,741	\$25,168,408.18	\$159,576.15	\$441.70
<b>March</b>	56,495	144,120	\$24,881,361.27	\$191,136.80	\$440.42
<b>April</b>	55,440	140,908	\$24,381,061.10	\$160,881.19	\$439.77
<b>May</b>	54,072	136,680	\$23,772,896.31	\$143,340.26	\$439.65
<b>June</b>	53,121	133,864	\$23,126,648.57	\$143,258.30	\$435.36
<b>Mo. Avg.</b>	55,068	141,114	\$24,166,222.78	\$182,217.34	\$438.84

## TANF/WorkFirst Program

### TANF Caseload By Region and CSO, June 2002

Source: ESA-MRDA

	Number of Cases	Percent of Cases
<b>Region 1</b>		
Clarkston	232	0.4%
Colfax	161	0.3%
Davenport	77	0.1%
Mattawa	54	0.1%
Moses Lake	955	1.8%
Newport	198	0.4%
Okanogan	455	0.9%
Othello	304	0.6%
Pomeroy	5	0.0%
Republic	84	0.2%
Spokane Central	0	0.0%
Spokane North	2,019	3.8%
Spokane Southwest	790	1.5%
Spokane Valley	1,589	3.0%
Tri County - Colville	514	1.0%
Wenatchee - Chelan	685	1.3%
Wenatchee - Douglas	179	0.3%
<b>Region 1 Total</b>	<b>8,301</b>	<b>15.6%</b>
<b>Region 2</b>		
Ellensburg	191	0.4%
Grandview	136	0.3%
Kennewick	1,227	2.3%
Pasco	864	1.6%
Region 2 Call Center	15	0.0%
Sunnyside	786	1.5%
Toppenish-Wapato	1,039	2.0%
Walla Walla	513	1.0%
Walla Walla - Columbia	3	0.0%
Yakima	1,841	3.5%
Yakima – Kittitas	292	0.5%
<b>Region 2 Total</b>	<b>6,907</b>	<b>13.0%</b>
<b>Region 3</b>		
Alderwood	620	1.2%
Bellingham	1,203	2.3%
Everett	1,582	3.0%
Friday Harbor	25	0.0%
Mt. Vernon	1,048	2.0%
Oak Harbor	220	0.4%
Skykomish Valley	373	0.7%
Smokey Point	845	1.6%
<b>Region 3 Total</b>	<b>5,916</b>	<b>11.1%</b>

## TANF/WorkFirst Program

### TANF Caseload By Region and CSO, June 2002

Source: ESA-MRDA

	Number of Cases	Percent of Cases
<b>Region 4</b>		
Auburn	1,018	1.9%
Belltown	298	0.6%
Burien	2,150	4.0%
Capitol Hill	763	1.4%
Federal Way	1,115	2.1%
King Eastside	800	1.5%
King North/Ballard	911	1.7%
King South	1,555	2.9%
Rainier	1,161	2.2%
Renton	1,300	2.4%
West Seattle	928	1.7%
<b>Region 4 Total</b>	<b>11,999</b>	<b>22.6%</b>
<b>Region 5</b>		
Bremerton	1,459	2.7%
NW Special Services	4	0.0%
NW WorkFirst	3,828	7.2%
Pierce South	2,642	5.0%
Puyallup	1,484	2.8%
<b>Region 5 Total</b>	<b>9,417</b>	<b>17.7%</b>
<b>Region 6</b>		
Aberdeen	1,025	1.9%
Chehalis	1,046	2.0%
Columbia River	3,457	6.5%
Customer Service Center	3	0.0%
Forks	205	0.4%
Goldendale	148	0.3%
Kelso	1,354	2.5%
Long Beach	112	0.2%
Medical Eligibility Services	6	0.0%
Olympia	1,688	3.2%
Port Angeles	434	0.8%
Port Townsend	162	0.3%
Shelton	610	1.1%
South Bend	113	0.2%
Stevenson	101	0.2%
Vancouver	18	0.0%
Washcap	3	0.0%
White Salmon	96	0.2%
<b>Region 6 Total</b>	<b>10,581</b>	<b>19.9%</b>
<b>State Total</b>	<b>53,121</b>	<b>100.0%</b>

## TANF/WorkFirst Program

### TANF Caseload By County, June 2002

Source: ESA-MRDA

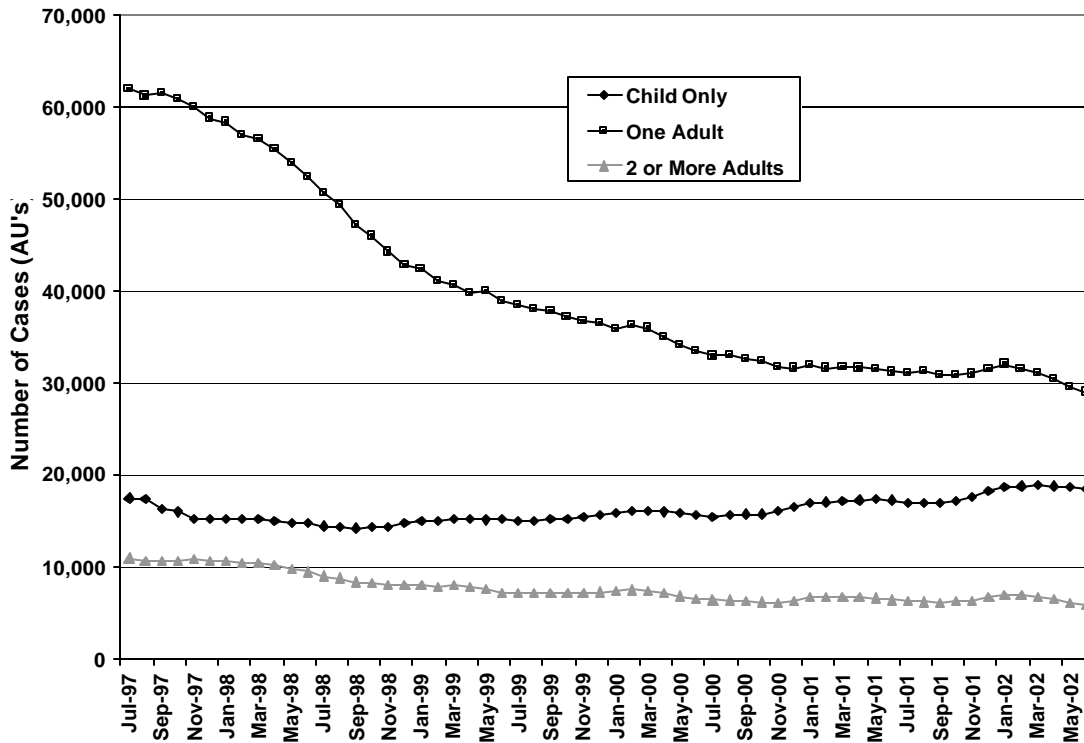
	Number of Cases	Percent of Cases
Adams	304	0.6%
Asotin	232	0.4%
Benton	1,227	2.3%
Chelan	685	1.3%
Clallam	639	1.2%
Clark	3,477	6.5%
Columbia	3	0.0%
Cowlitz	1,354	2.5%
Douglas	179	0.3%
Ferry	84	0.2%
Franklin	864	1.6%
Garfield	5	0.0%
Grant	1,009	1.9%
Grays Harbor	1,025	1.9%
Island	220	0.4%
Jefferson	162	0.3%
King	11,999	22.6%
Kitsap	1,459	2.7%
Kittitas	191	0.4%
Klickitat	244	0.5%
Lewis	1,046	2.0%
Lincoln	77	0.1%
Mason	610	1.1%
Okanogan	455	0.9%
Pacific	225	0.4%
Pend Oreille	198	0.4%
Pierce	7,958	15.0%
San Juan	25	0.0%
Skagit	1,048	2.0%
Skamania	101	0.2%
Snohomish	3,420	6.4%
Spokane	4,398	8.3%
Stevens	514	1.0%
Thurston	1,698	3.2%
Wahkiakum	0	0.0%
Walla Walla	513	1.0%
Whatcom	1,203	2.3%
Whitman	161	0.3%
Yakima	4,109	7.7%
<b>State Total</b>	<b>53,121</b>	<b>100.0%</b>

**Note:** Cases are assigned to counties based on the location of the Community Service Office (CSO) where they are served. Some service areas overlap county boundaries, so counts here may not reflect counts based on county of residence.

## TANF/WorkFirst Program

### TANF Caseload By Number of Adults, SFY 2002

Source: ESA-MRDA



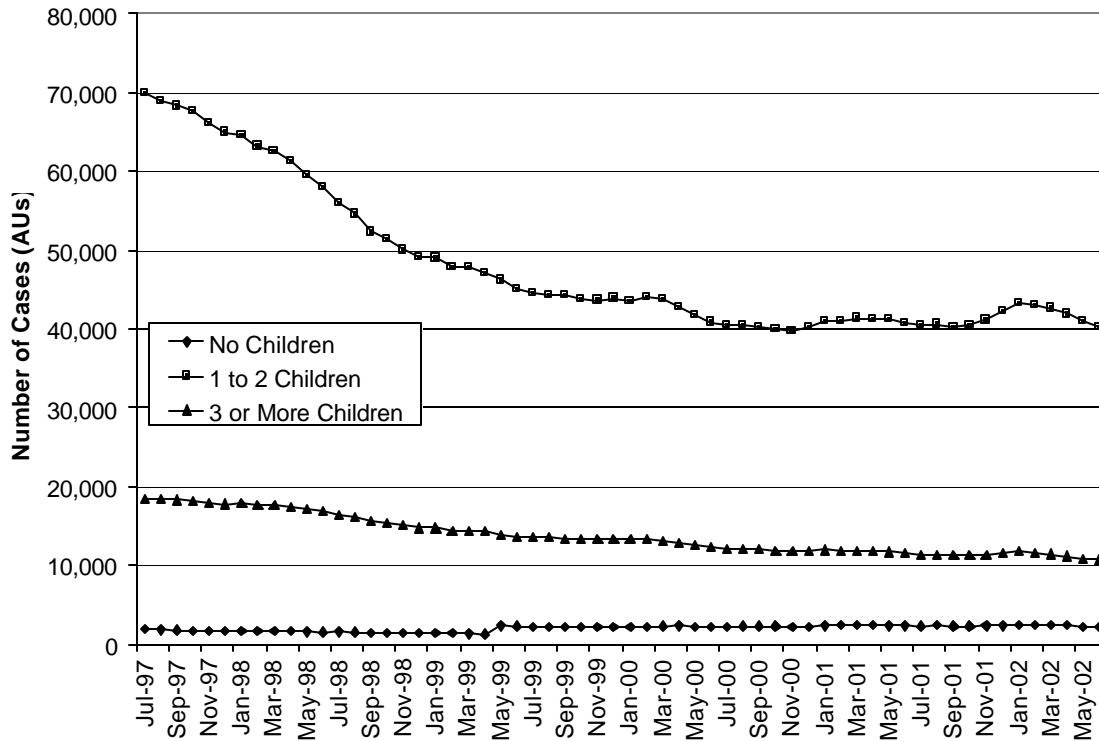
Caseload	Child-Only		1 Adult		2 or More Adults	
	Number	Percent	Number	Percent	Number	Percent
Jul-01	54,095	31.1%	31,023	57.3%	6,222	11.5%
Aug-01	54,261	31.2%	31,189	57.5%	6,121	11.3%
Sep-01	53,813	31.5%	30,829	57.3%	6,044	11.2%
Oct-01	54,050	31.5%	30,870	57.1%	6,131	11.3%
Nov-01	54,763	32.1%	30,915	56.5%	6,265	11.4%
Dec-01	56,301	32.4%	31,417	55.8%	6,638	11.8%
Jan-02	57,428	32.4%	31,962	55.7%	6,846	11.9%
Feb-02	56,981	32.8%	31,473	55.2%	6,806	11.9%
Mar-02	56,495	33.3%	31,003	54.9%	6,706	11.9%
Apr-02	55,440	33.8%	30,321	54.7%	6,403	11.5%
May-02	54,072	34.4%	29,489	54.5%	5,962	11.0%
Jun-02	53,121	34.8%	28,914	54.4%	5,738	10.8%
<b>Mo. Avg.</b>	<b>55,068</b>	<b>32.6%</b>	<b>30,784</b>	<b>55.9%</b>	<b>6,324</b>	<b>11.5%</b>

**Note:** Adults include teen parents.

## TANF/WorkFirst Program

### TANF Caseload By Number of Children, SFY 2002

Source: ESA-MRDA



	Caseload	No Children <sup>1</sup>		1 to 2 Children		3 or More Children	
		Number	Percent	Number	Percent	Number	Percent
<b>Jul-01</b>	54,095	2,269	4.2%	40,456	74.8%	11,347	21.0%
<b>Aug-01</b>	54,261	2,341	4.3%	40,595	74.8%	11,302	20.8%
<b>Sep-01</b>	53,813	2,250	4.2%	40,323	74.9%	11,209	20.8%
<b>Oct-01</b>	54,050	2,256	4.2%	40,564	75.0%	11,206	20.7%
<b>Nov-01</b>	54,763	2,296	4.2%	41,153	75.1%	11,286	20.6%
<b>Dec-01</b>	56,301	2,324	4.1%	42,356	75.2%	11,588	20.6%
<b>Jan-02</b>	57,428	2,410	4.2%	43,254	75.3%	11,727	20.4%
<b>Feb-02</b>	56,981	2,404	4.2%	43,008	75.5%	11,538	20.2%
<b>Mar-02</b>	56,495	2,402	4.3%	42,646	75.5%	11,415	20.2%
<b>Apr-02</b>	55,440	2,351	4.2%	41,877	75.5%	11,161	20.1%
<b>May-02</b>	54,072	2,227	4.1%	40,944	75.7%	10,857	20.1%
<b>Jun-02</b>	53,121	2,200	4.1%	40,218	75.7%	10,667	20.1%
<b>Mo.</b>							
<b>Avg.</b>	55,068	2,311	4.2%	41,450	75.3%	11,275	20.5%

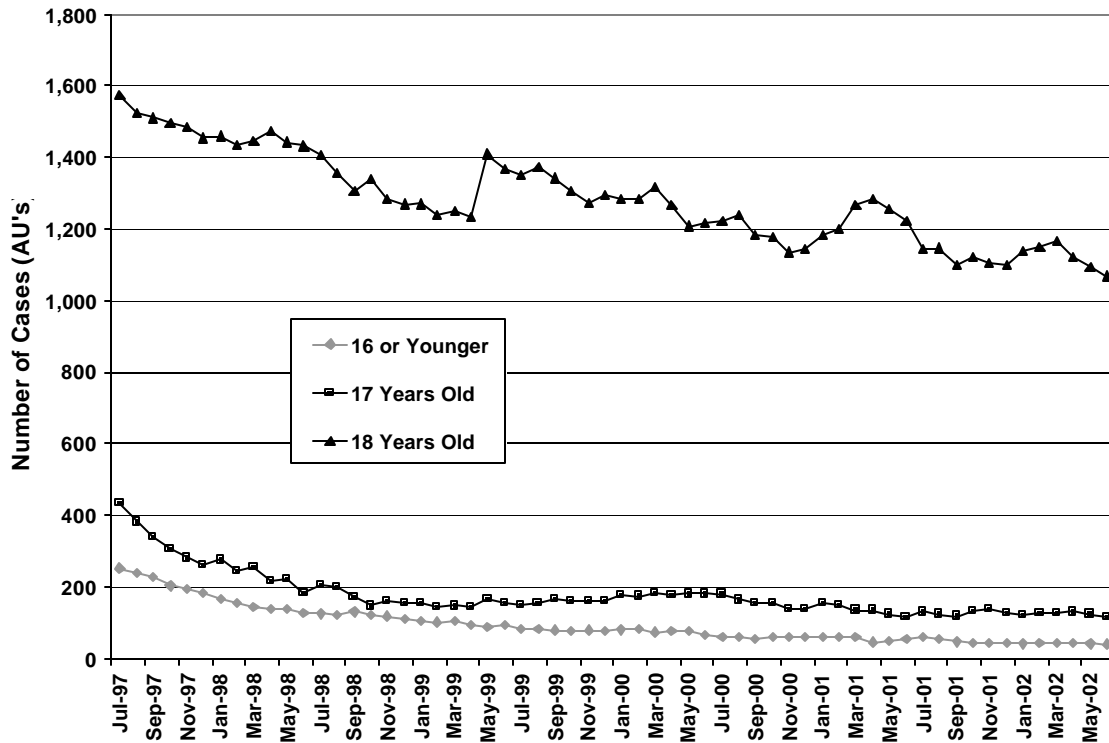
In cases where only children eligible for TANF already receive SSI, the child will not receive a TANF payment but the parent does receive a TANF payment. Also, a pregnant woman with no child is eligible for TANF.



## TANF/WorkFirst Program

### TANF Caseload With Teen Head of Household, SFY 2002

Source: ESA-MRDA



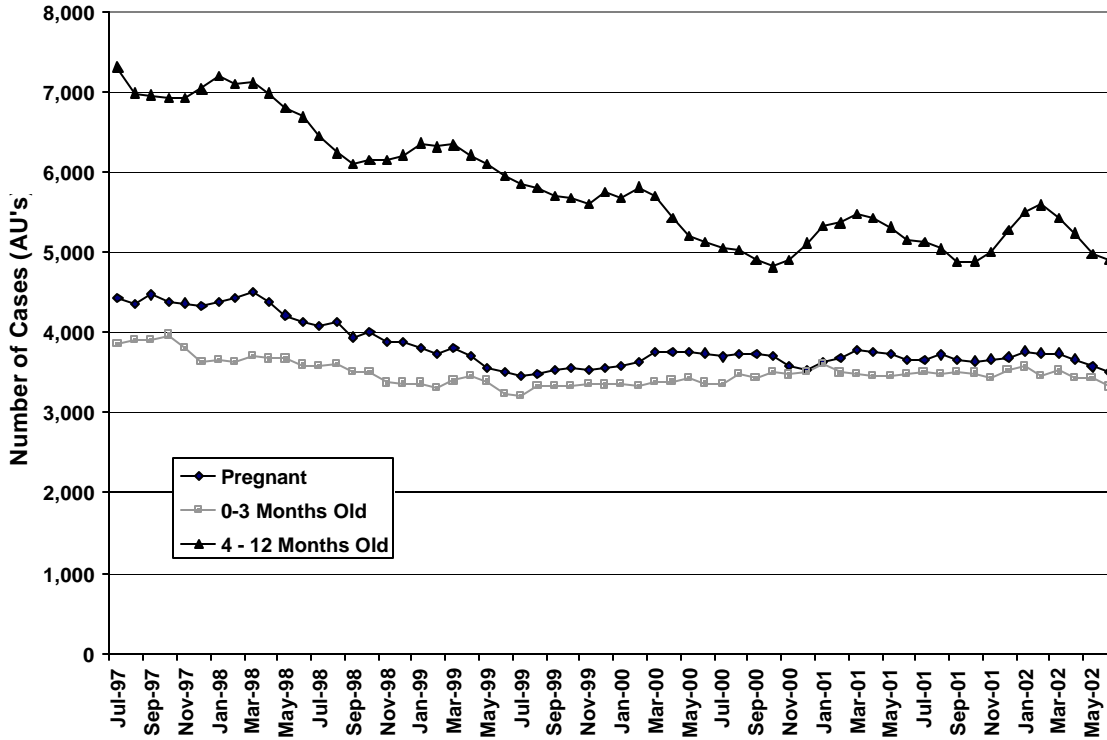
	Adult Caseload	Head of Household is 16 Years Old or Less		Head of Household is 17 Years Old		Head of Household is 18 Years Old	
		Number	Percent	Number	Percent	Number	Percent
<b>Jul-01</b>	37,222	61	0.2%	129	0.3%	1,223	3.3%
<b>Aug-01</b>	37,287	54	0.1%	123	0.3%	1,142	3.1%
<b>Sep-01</b>	36,843	46	0.1%	117	0.3%	1,146	3.1%
<b>Oct-01</b>	36,979	42	0.1%	131	0.4%	1,100	3.0%
<b>Nov-01</b>	37,152	43	0.1%	137	0.4%	1,121	3.0%
<b>Dec-01</b>	38,022	42	0.1%	127	0.3%	1,103	3.0%
<b>Jan-02</b>	38,772	40	0.1%	120	0.3%	1,101	2.9%
<b>Feb-02</b>	38,249	42	0.1%	128	0.3%	1,139	2.9%
<b>Mar-02</b>	37,679	43	0.1%	125	0.3%	1,151	3.0%
<b>Apr-02</b>	36,677	42	0.1%	129	0.4%	1,168	3.1%
<b>May-02</b>	35,409	40	0.1%	123	0.3%	1,120	3.1%
<b>Jun-02</b>	34,616	39	0.1%	115	0.3%	1,092	3.1%

Note: Adults include teen parents.

## TANF/WorkFirst Program

### TANF Caseload With Pregnant Women and Children 12 Months or Younger SFY 2002

Source: ESA-MRDA



	Adult Caseload	Pregnant <sup>1</sup>		0 – 3 Month Old Child		4 – 12 Month Old Child	
		Number	Percent	Number	Percent	Number	Percent
Jul-01	37,222	3,664	9.8%	3,502	9.4%	5,126	13.8%
Aug-01	37,287	3,719	10.0%	3,484	9.3%	5,038	13.5%
Sep-01	36,843	3,655	9.9%	3,498	9.5%	4,867	13.2%
Oct-01	36,979	3,644	9.9%	3,491	9.4%	4,886	13.2%
Nov-01	37,152	3,666	9.9%	3,437	9.3%	5,007	13.5%
Dec-01	38,022	3,691	9.7%	3,527	9.3%	5,270	13.9%
Jan-02	38,772	3,765	9.7%	3,571	9.2%	5,491	14.2%
Feb-02	38,249	3,740	9.8%	3,446	9.0%	5,588	14.6%
Mar-02	37,679	3,741	9.9%	3,520	9.3%	5,428	14.4%
Apr-02	36,677	3,666	10.0%	3,430	9.4%	5,234	14.3%
May-02	35,409	3,571	10.1%	3,433	9.7%	4,974	14.0%
Jun-02	34,616	3,500	10.1%	3,321	9.6%	4,895	14.1%

**Mo.**

**Avg.** 37,076      3,669      9.9%      3,472      9.4%      5,150      13.9%

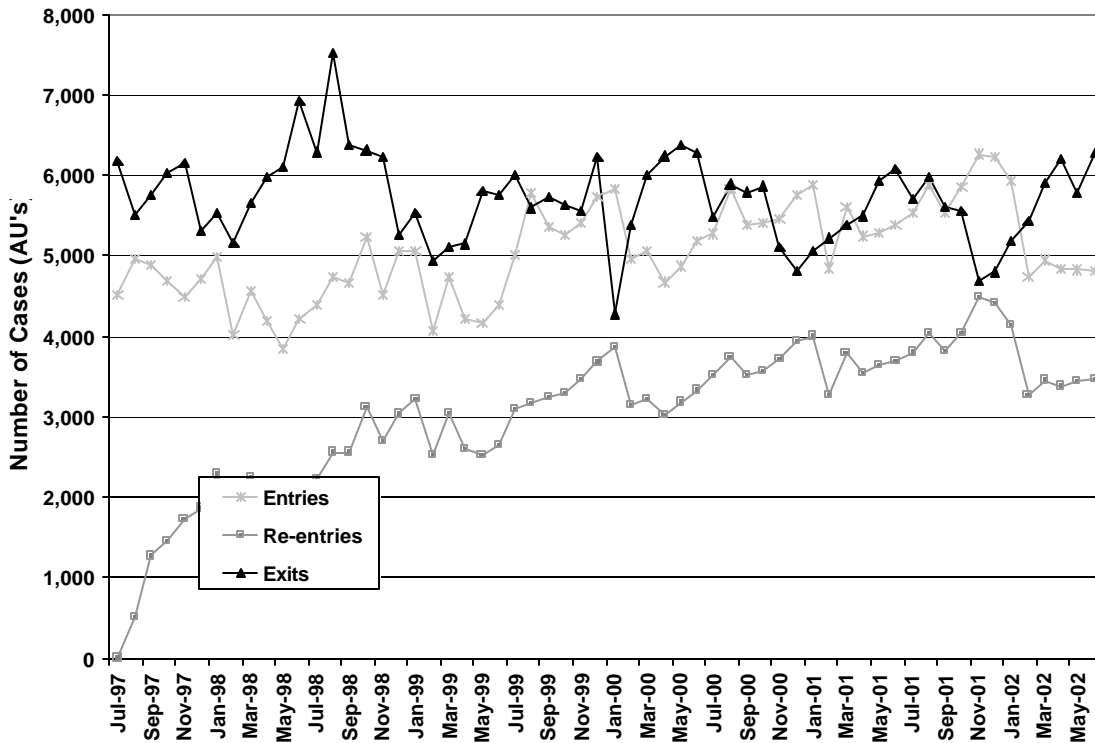
**Note:** Cases are unduplicated across groups. If a case has multiple young children or a pregnant recipient and a young child, the case category reflects the youngest child. Adults include teen parents.

<sup>1</sup> Pregnant women were identified using pregnancy status data entered in ACES.

## TANF/WorkFirst Program

### TANF Cases Entering, Re-Entering, and Exiting, SFY 2002

Source: ESA-MRDA



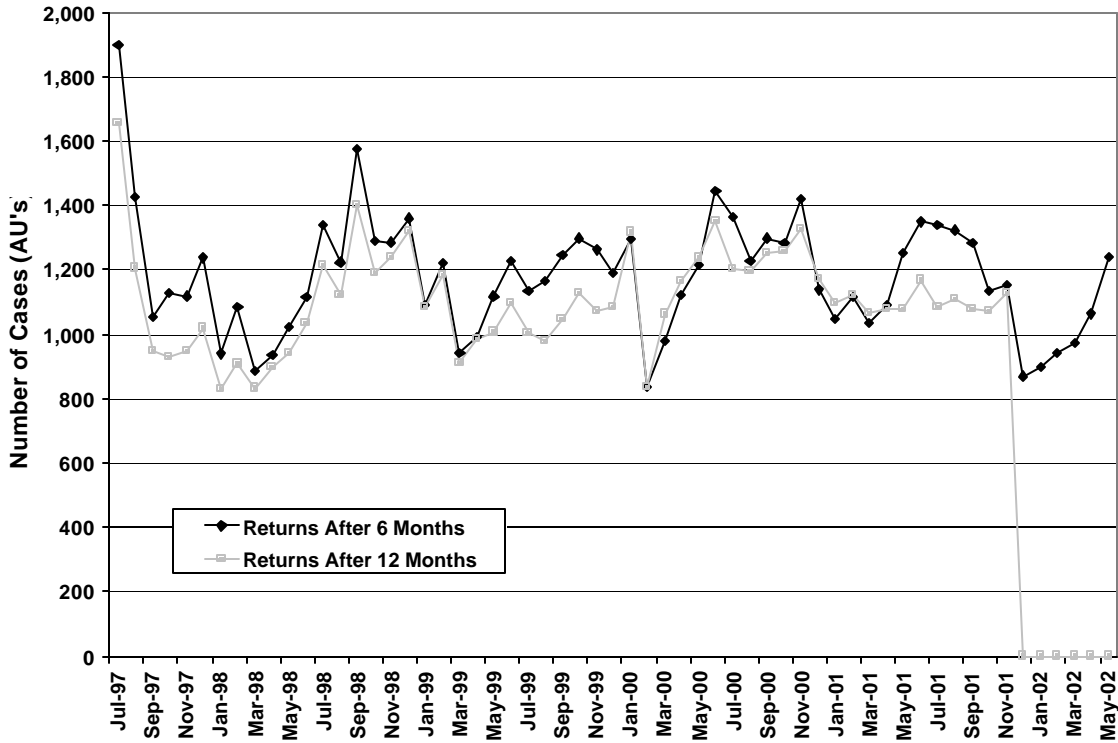
	Caseload	Entries		Re-Entries		Exits	
		Number	Percent	Number	Percent	Number	Percent
<b>Jul-01</b>	54,095	5,540	10.2%	3,802	7.0%	5,714	10.6%
<b>Aug-01</b>	54,261	5,877	10.8%	4,045	7.5%	5,972	11.0%
<b>Sep-01</b>	53,813	5,524	10.3%	3,809	7.1%	5,613	10.4%
<b>Oct-01</b>	54,050	5,850	10.8%	4,047	7.5%	5,556	10.3%
<b>Nov-01</b>	54,763	6,264	11.4%	4,481	8.2%	4,691	8.6%
<b>Dec-01</b>	56,301	6,230	11.1%	4,418	7.8%	4,799	8.5%
<b>Jan-02</b>	57,428	5,922	10.3%	4,135	7.2%	5,183	9.0%
<b>Feb-02</b>	56,981	4,734	8.3%	3,278	5.8%	5,435	9.5%
<b>Mar-02</b>	56,495	4,945	8.8%	3,455	6.1%	5,899	10.4%
<b>Apr-02</b>	55,440	4,840	8.7%	3,378	6.1%	6,195	11.2%
<b>May-02</b>	54,072	4,826	8.9%	3,442	6.4%	5,770	10.7%
<b>Jun-02</b>	53,121	4,817	9.1%	3,465	6.5%	6,270	11.8%

**Note:** Entries are defined as cases that were not on TANF the month prior to what is reported. Exits are defined as cases that received a benefit in the month reported, but not in the subsequent month. Re-entries are defined as cases that have been off TANF at least one month before re-entering TANF.

## TANF/WorkFirst Program

### Adults Returning to TANF Within Six Months and 12 Months After Exit, SFY 2002

Source: OFM



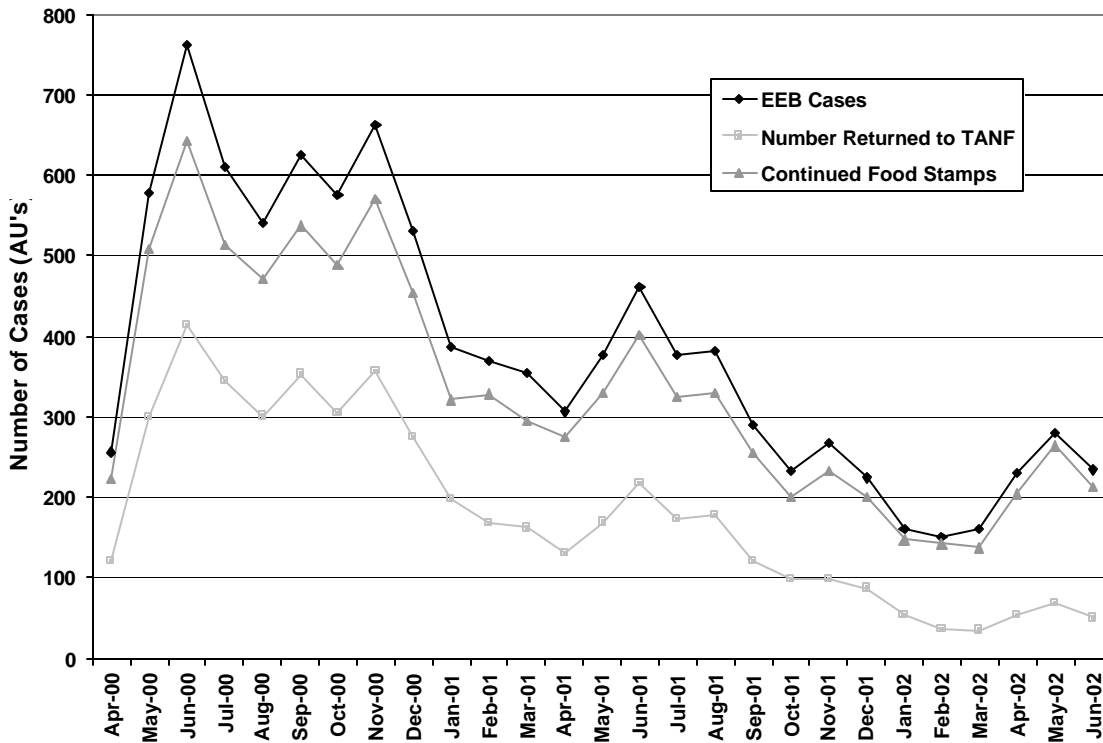
	Adults Exiting	Return After 6 Months		Return After 12 Months	
		Number	Percent	Number	Percent
Jul-01	5,978	1,338	22.4	1,083	18.1
Aug-01	6,163	1,323	21.5	1,110	18.0
Sep-01	5,966	1,282	21.5	1,080	18.1
Oct-01	5,609	1,135	20.2	1,071	19.1
Nov-01	5,952	1,155	19.4	1,126	18.9
Dec-01	4,630	870	18.8	0	0.0
Jan-02	5,006	899	18.0	0	0.0
Feb-02	5,488	940	17.1	0	0.0
Mar-02	5,646	971	17.2	0	0.0
Apr-02	5,955	1,063	17.9	0	0.0
May-02	6,752	1,242	18.4	0	0.0
Jun-02	5,644	0	0.0	0	0.0

**Note:** Table shows the number of adults who have returned within six months or 12 months after exiting. For example, of all the adults in May 2002 (6,752), 1,242 or 18.4 percent of them returned after six months, in this case receiving TANF in November 2002. Likewise, of the 5,952 adults in November 2001, 1,126 of them or 18.9 percent returned after 12 months. The latest month available for those returning within 12 months is November 2001 (returning on or before November 2002). The latest available data for those returning after 6 months is May 2002 (returning on or before November 2002). Adults include teen parents.

## TANF/WorkFirst Program

### TANF Persons Receiving the Early Exit Bonus SFY 2002

Source: ESA-MRDA



	EEB Count	Returned To TANF <sup>1</sup>			Continued Food Stamps <sup>2</sup>	
		Number	Percent	Average Months Off	Number	Percent
Jul-01	377	173	45.9%	5	324	85.9%
Aug-01	382	178	46.6%	5	329	86.1%
Sep-01	289	121	41.9%	5	254	87.9%
Oct-01	232	98	42.2%	5	201	86.6%
Nov-01	268	99	36.9%	5	232	86.6%
Dec-01	224	87	38.8%	5	201	89.7%
Jan-02	160	54	33.8%	4	147	91.9%
Feb-02	151	37	24.5%	4	142	94.0%
Mar-02	160	35	21.9%	4	137	85.6%
Apr-02	230	54	23.5%	3	204	88.7%
May-02	279	69	24.7%	2	264	94.6%
Jun-02	234	50	21.4%	2	212	90.6%

**Note:** The Early Exit Bonus (EEB) began in April 2000 and is a once in a lifetime \$1,000 payment to participants who receive \$100 or less in TANF/SFA due to earnings and voluntarily terminates from assistance. It provides a boost to meet work and work-related expenses while transitioning from TANF to employment.

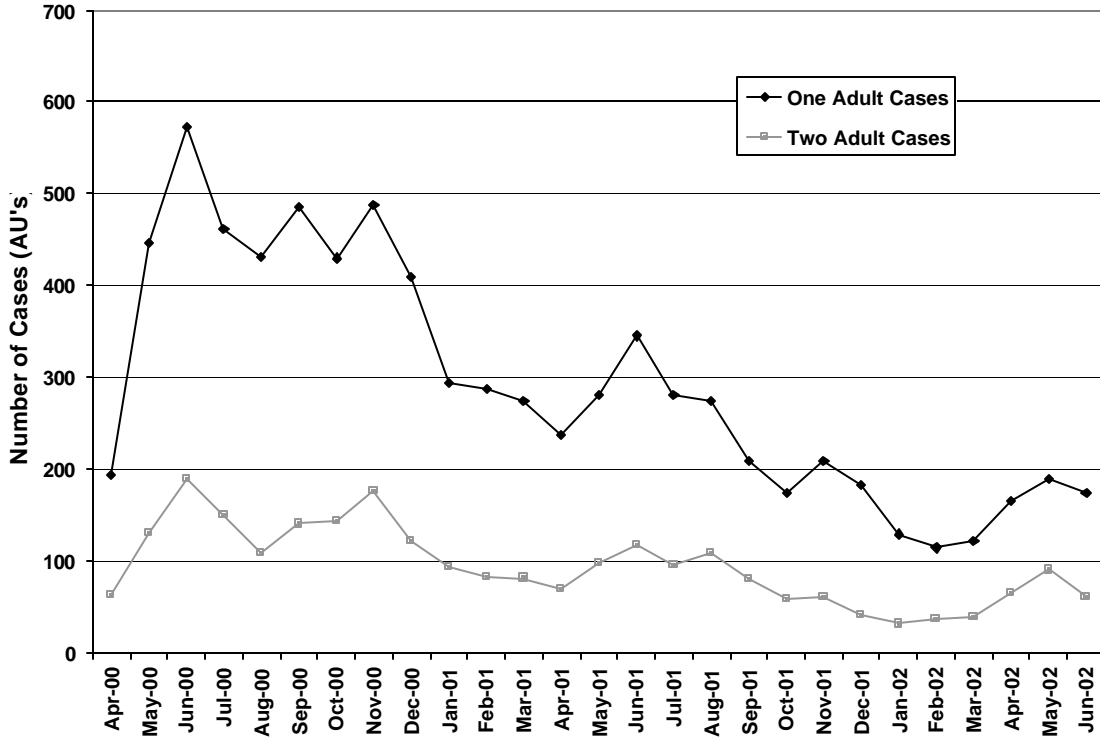
<sup>1</sup> Returned to TANF includes clients who received TANF in any month after receiving the EEB.

<sup>2</sup> Continued Food Stamps includes clients who received Food Stamps in the same month as the Early Exit Bonus regardless of whether they received Food Stamps in subsequent months.

## TANF/WorkFirst Program

### Clients Receiving the Early Exit Bonus, By Case Type SFY 2002

Source: ESA-MRDA



	Clients on Cases With One Adult		Clients on Cases With Two or More Adults	
	Number	Percent	Number	Percent
Jul-01	281	74.5%	96	25.5%
Aug-01	274	71.7%	108	28.3%
Sep-01	209	72.3%	80	27.7%
Oct-01	174	75.0%	58	25.0%
Nov-01	208	77.6%	60	22.4%
Dec-01	183	81.7%	41	18.3%
Jan-02	129	80.6%	31	19.4%
Feb-02	114	75.5%	37	24.5%
Mar-02	121	75.6%	39	24.4%
Apr-02	165	71.7%	65	28.3%
May-02	189	67.7%	90	32.3%
Jun-02	174	74.4%	60	25.6%

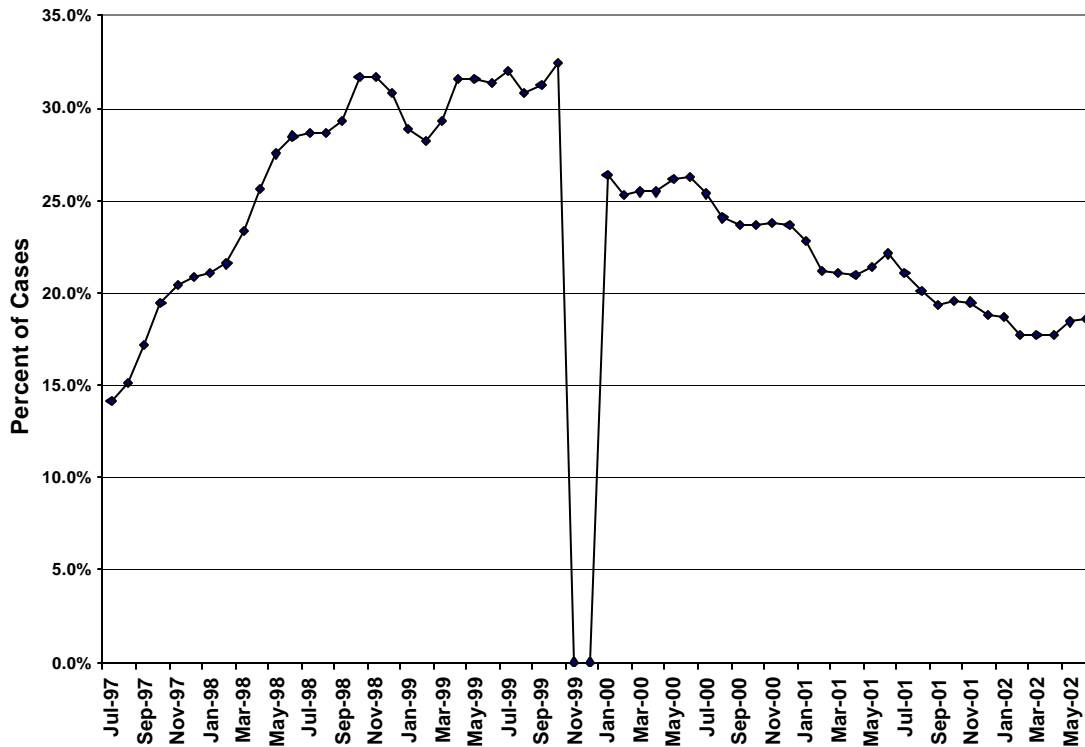
**Note:** The Early Exit Bonus (EEB) began in April 2000 and is a once in a lifetime \$1,000 payment to participants who receive \$100 or less in TANF/SFA due to earnings and voluntarily terminates from assistance. It provides a boost to meet work and work-related expenses while transitioning from TANF to employment.

<sup>1</sup> The case type is the number of adult recipients (including teen parents) on the case.

## TANF/WorkFirst Program

### Employed TANF Adults, SFY 2002

Source: ESA-MRDA



	TANF Adults	Employed Number	Employed Percent	Avg. Hours Worked	Avg. Hourly Earnings
<b>Jul-01</b>	43,421	9,162	21.1%	71	\$8.68
<b>Aug-01</b>	43,382	8,702	20.1%	71	\$8.80
<b>Sep-01</b>	42,868	8,287	19.3%	71	\$8.83
<b>Oct-01</b>	43,099	8,431	19.6%	70	\$8.86
<b>Nov-01</b>	43,397	8,458	19.5%	70	\$8.83
<b>Dec-01</b>	44,630	8,379	18.8%	70	\$8.79
<b>Jan-02</b>	45,592	8,523	18.7%	68	\$8.95
<b>Feb-02</b>	45,034	7,968	17.7%	68	\$9.08
<b>Mar-02</b>	44,375	7,867	17.7%	69	\$8.94
<b>Apr-02</b>	43,057	7,627	17.7%	67	\$9.03
<b>May-02</b>	41,341	7,619	18.4%	67	\$9.08
<b>Jun-02</b>	40,331	7,498	18.6%	66	\$9.27

**Note:** Employment is identified using data in the ACES system. Adults include teen parents. Also note that in January 2000, ESA switched from retrospective budgeting to prospective budgeting. Because of that change, October 1999 – December 1999 income was not used to budget benefit amounts. Therefore, employment data for those months is considered unreliable.

## TANF/WorkFirst Program

### TANF Cases With Adults in WorkFirst Sanction Status, SFY 2002

Source: ESA-MRDA

	TANF Cases With Adults	Cases Sanctioned	Percent of Cases Sanctioned
<b>Jul-01</b>	37,222	2,573	6.9%
<b>Aug-01</b>	37,287	2,513	6.7%
<b>Sep-01</b>	36,843	2,558	6.9%
<b>Oct-01</b>	36,979	2,596	7.0%
<b>Nov-01</b>	37,152	2,707	7.3%
<b>Dec-01</b>	38,022	2,891	7.6%
<b>Jan-02</b>	38,772	3,155	8.1%
<b>Feb-02</b>	38,249	3,220	8.4%
<b>Mar-02</b>	37,679	3,262	8.7%
<b>Apr-02</b>	36,677	3,561	9.7%
<b>May-02</b>	35,409	3,968	11.2%
<b>Jun-02</b>	34,616	4,128	11.9%

Note: Adults include teen parents.

### TANF Cases With Adults in WorkFirst Sanction Status By Consecutive Months in Sanctioned Status, SFY 2002

Source: ESA-MRDA

	Cases Sanctioned	First Month		Second Month		Third Month or Later	
		Number	Percent	Number	Percent	Number	Percent
<b>Jul-01</b>	2,573	911	35.4%	926	36.0%	736	28.6%
<b>Aug-01</b>	2,513	898	35.7%	891	35.5%	724	28.8%
<b>Sep-01</b>	2,558	947	37.0%	885	34.6%	726	28.4%
<b>Oct-01</b>	2,596	927	35.7%	903	34.8%	766	29.5%
<b>Nov-01</b>	2,707	1,078	39.8%	887	32.8%	742	27.4%
<b>Dec-01</b>	2,891	1,042	36.0%	1,048	36.3%	801	27.7%
<b>Jan-02</b>	3,155	1,203	38.1%	1,107	35.1%	845	26.8%
<b>Feb-02</b>	3,220	1,138	35.3%	1,184	36.8%	898	27.9%
<b>Mar-02</b>	3,262	1,161	35.6%	1,172	35.9%	929	28.5%
<b>Apr-02</b>	3,561	1,446	40.6%	1,158	32.5%	957	26.9%
<b>May-02</b>	3,968	1,694	42.7%	1,296	32.7%	978	24.6%
<b>Jun-02</b>	4,128	1,577	38.2%	1,540	37.3%	1,011	24.5%

Note: Adults include teen parents.



**TANF Adults and Their WorkFirst Participation Status in June 2002**

Source: JAS/JFS Report JASB08P2-2

	Number	Percent
<b>Total Number of WorkFirst Adults</b>	31,815	100.0%
<b>Adults <u>Not Ready</u> to Participate in WorkFirst Activities</b>	<u>8,133</u>	<u>25.6%</u>
Caring for a Child Under 3 Months of Age	177	0.6%
Pursuing Other Benefits (XB)	1,909	6.0%
No Care Available / Child or Incapacitated Adult (XC)	728	2.3%
Treatment / Temporary Incapacity (XM)	2,238	7.0%
Family Violence Intervention (XF)	264	0.8%
DVR/DDD Plan (XD)	63	0.2%
Homelessness Resolution (XH)	259	0.8%
Caring For a Child/Special Needs (XN)	175	0.6%
Parenting Skills & Family Planning (XP)	1,847	5.8%
Age 55 & Over Relative Caretaker (XR)	44	0.1%
Alcohol/Substance Abuse Treatment (XE)	282	0.9%
Mental Health Services (XG)	145	0.5%
Learning Disability Services (XJ)	2	0.0%
<b>Adults <u>Ready</u> to Participate in WorkFirst Activities</b>	<u>23,682</u>	<u>74.4%</u>
<b><i>Ready – Not Participating</i></b>	<b><i>1,824</i></b>	<b><i>7.7%</i></b>
No Countable Activity	776	3.3%
Referral Only	557	2.4%
Long Term Sanction (Over 3 Months)	491	2.1%
<b><i>Ready - Participating</i></b>	<b><i>21,858</i></b>	<b><i>92.3%</i></b>
Working	6,717	28.4%
Preparing For Work	3,362	14.2%
Looking For Work	6,926	29.2%
Short Term Sanction (Under 3 Months)	4,853	20.5%

**Note:** Adult counts differ from other tables because JASB08P2-2 excludes adults that are receiving their last month of benefits. Participation is the state, not a federal definition. Adults include teen parents. Adults are unduplicated by category based on a hierarchy in the order the category is shown. The hierarchy and definition for each category is as shown below:

- Not Ready, Exempt, or Unable to Participate: (XB, XC, XM, XF, XD, XH, XN, XP, XR, XE, XG, XJ, CA)
- No Countable Activity (FT, PT, SF, SP, WP, LE, PS, SD, SE, ST)
- Referral only: (ER, LP, PR, RA, RB, RC, RE, RI, RL, RN, RO, RP RT, RX, SR)
- Long-term Sanction (3 months and over SA)
- Working (16 or more hours per week of scheduled employment or minimum of 16 work in work study)
- Looking for Work (JI, JS, JW)
- Preparing for Work (WE, OT, XS, AA, BA, BE, ET, GE, HS, JT, VE, PE)
- Short-term Sanction (under 3 months SA)

## TANF/WorkFirst Program

### TANF Client Demographics, June 2002

Source: ESA-MRDA

Characteristic	All TANF Clients (N=135,889)	Percent	All TANF Adults (N=40,335)	Percent
<b>Gender</b>				
Female	79,709	58.7%	32,258	80.0%
Male	56,180	41.3%	8,087	20.0%
<b>Race</b>				
White	76,388	56.2%	25,702	63.7%
Hispanic	20,293	14.9%	3,852	9.5%
Black	18,337	13.5%	5,211	12.9%
Asian/Pacific Islander	5,465	4.0%	1,589	3.9%
Native American	6,075	4.5%	1,868	4.6%
Unknown	9,331	6.9%	2,123	5.3%
<b>Marital Status (Adults Only)</b>				
Separated	5,809	14.4%	5,809	14.4%
Married	9,886	24.5%	9,886	24.5%
Never Married	18,588	46.1%	18,588	46.1%
Divorced	5,563	13.8%	5,563	13.8%
Widow	279	0.7%	279	0.7%
Unknown	220	0.5%	220	0.5%
<b>Citizenship</b>				
U.S. Citizen	123,856	91.1%	35,122	87.1%
Resident Alien	11,514	8.5%	5,110	12.7%
U.S. National	219	0.2%	80	0.2%
U.S. Born Child of Refugee	272	0.2%	11	0.0%
Undocumented Alien	28	0.0%	22	0.1%
<b>Age</b>				
< 17 Years Old	91,134	67.1%	51	0.1%
17 – 18 Years Old	5,536	4.1%	1,270	3.1%
19 – 20 Years Old	3,787	2.8%	3,594	8.9%
21 – 30 Years Old	17,033	12.5%	17,032	42.2%
31 – 40 Years Old	12,045	8.9%	12,045	29.9%
41 – 50 Years Old	3,678	2.7%	3,678	9.1%
51 – 55 Years Old	660	0.5%	659	1.6%
56 + Years Old	320	0.2%	320	0.8%
Unknown	1,696	1.2%	1,696	4.2%
Mean Age of Children	8.0 Years Old		N/A	
Median Age of Children	7.5 Years Old		N/A	
Mean Age of Adults	31.1 Years Old		31.1 Years Old	
Median Age of Adults	29.7 Years Old		29.7 Years Old	

## TANF/WorkFirst Program

### TANF Client Demographics, June 2002

Source: ESA-MRDA

Characteristic	All TANF Clients (N=135,889)		All TANF Adults (N=40,335)	
		Percent		Percent
<b>Client Type</b>				
Adult	40,345	29.7%	40,345	100.0%
Child	93,425	68.8%	0	0.0%
SSI Child	2,119	1.6%	0	0.0%
<b>Limited in English<sup>1</sup></b>	21,072	15.5%	4,366	10.8%
<b>DSHS Region</b>				
Region 1	21,353	15.7%	6,554	16.2%
Region 2	17,953	13.2%	4,498	11.1%
Region 3	14,795	10.9%	4,529	11.2%
Region 4	31,840	23.4%	9,573	23.7%
Region 5	23,765	17.5%	7,339	18.2%
Region 6	26,183	19.3%	7,852	19.5%
<b>CSO Type</b>				
Urban	100,634	74.1%	30,437	75.4%
Rural	35,255	25.9%	9,908	24.6%
<b>Avg. Months on Assistance<sup>2</sup></b>		N/A	22 Months	
<b>Median Months on Assistance<sup>2</sup></b>		N/A	18 Months	

<sup>1</sup> A client is included in Limited English if the Head of Household for the Assistance Unit has indicated he/she wants to receive materials in a language other than English or is in need of an interpreter or is considered a refugee.

<sup>2</sup> Months on Assistance is defined as the number of total months an adult has been on assistance since August 1997.

## TANF/WorkFirst Program