

General Assistance Program

	PAGE
General Assistance Program Highlights.....	1
Selected Combined General Assistance Program Characteristics SFY 2005 and SFY 2006	2
Combined General Assistance Caseload SFY 2006	3
Selected General Assistance – Unemployable Program Characteristics SFY 2005 and SFY 2006	4
GA-Unemployable Caseload SFY 2006	5
Selected General Assistance – X Only Program Characteristics SFY 2005 and SFY 2006	6
GA-X Only Caseload SFY 2006	7
Selected General Assistance – Other Program Characteristics SFY 2005 and SFY 2006	8
GA-Other Caseload SFY 2006	9
Combined General Assistance Caseload by Program Type SFY 2006	10
Combined GA Caseload Exiting to SSI or Some Other Program SFY 2006	11
Combined GA Caseload by DSHS Region and CSO June 2006	12
Combined GA Caseload by County of Residence June 2006	15
General Assistance Program Client Demographics June 2006	16

General Assistance Program

General Assistance Program

General Assistance provides cash assistance to adults who cannot work and do not have dependent children. This section describes the General Assistance program separated into three main categories:

1. **General Assistance-Unemployable (GA-U).** The GA-U program is designed for those who are not employable.
2. **General Assistance-Expedited Medicaid (GA-X).** The GA-X program supports clients with pending applications for SSI, the federal Supplemental Security Income.
3. **General Assistance-Other.** Other General Assistance programs include Aged (GA-A), Blind (GA-B), Disabled (GA-D), Institutionalized (GA-I), and Regular (GA-R).

Highlights:

- The average monthly Combined General Assistance caseload increased 8.2% in SFY 2006 (27,664 cases) from SFY 2005 (25,566 cases).
- The average payment per case in SFY 2006 was \$308.38, compared to \$308.35 in SFY 2005.
- The average monthly GA-U Only caseload increased 11.2% in SFY 2006 (13,995 cases), from SFY 2005 (12,587 cases).
- The average monthly GA-X Only caseload increased 3% in SFY 2006 (11,286 cases), from SFY 2005 (10,958 cases).
- Most GA-U only recipients are male (59.1%), and white (67.7%). The median age for GA-U only recipients is 44 years.
- Most GA-X only recipients are male (55.3%), and white (73.4%). The median age for GA-X only recipients is 44 years.
- Most GA-Aged, Blind, Disabled recipients are female (61.6%) and over 65 years old (80.5%). The median age for GA-Aged, Blind, and Disabled recipients is 70 years old.

General Assistance Program

Selected Combined General Assistance Program Characteristics SFY 2005 and SFY 2006

Source: ESA-ACES Data

	SFY 2005 (July 2004 – June 2005)	SFY 2006 (July 2005 – June 2006)
Average Number of Cases Per Month (Range)	25,566 (24,014 – 26,960)	27,664 (26,852 – 28,645)
Average Number of Persons Per Month (Range)	25,919 (24,334 – 27,332)	28,044 (27,216 – 29,033)
Recipients as a Percent of State's Population Age 18 and Over	0.5%	0.5%
State Population Age 18 and Over¹	4,725,461	4,826,555
Average Persons Per Case	1.0	1.0
Average Monthly Payment Per Case (Range)²	\$308.35 (\$306.79 - \$309.98)	\$308.38 (\$306.60 - \$309.78)

¹ OFM, 2006 Population Trends for Washington State

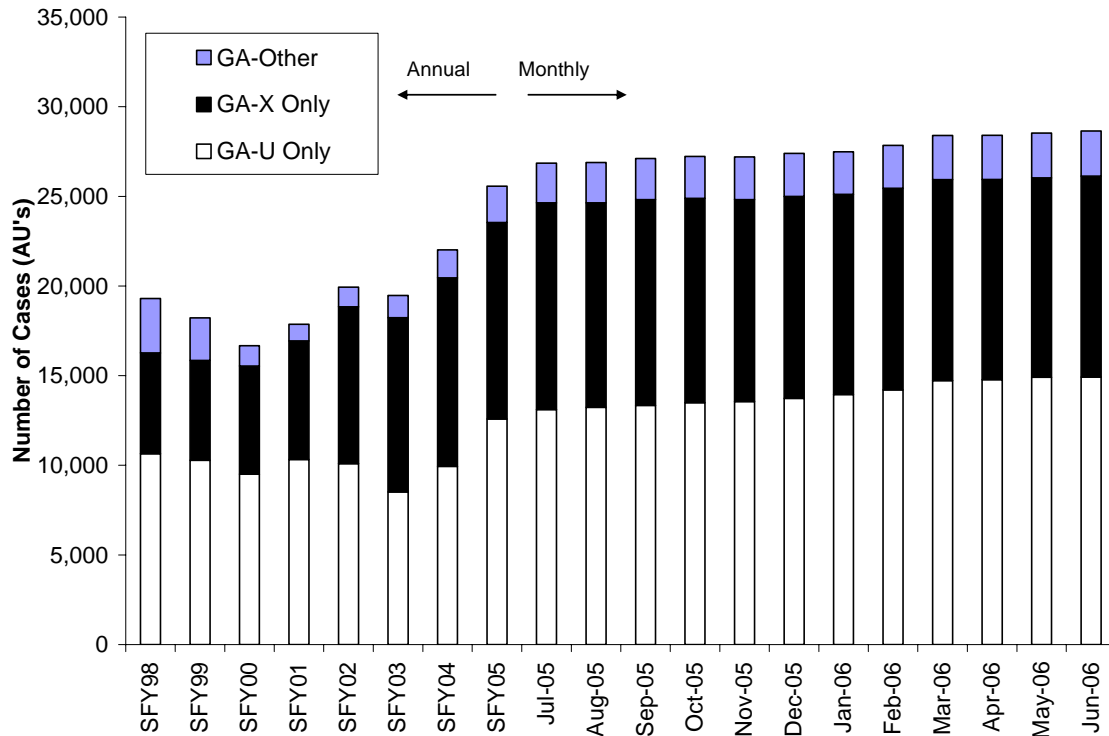
² Payments are not adjusted for refunds

Note: The combined GA caseload includes general assistance for Unemployable (GA-U), Aged (GA-A), Blind (GA-B), Disabled (GA-D), Expedited Medicaid (GA-X), Regular (GA-R) and Residing in an Institution for the Mentally Diseased (GA-I and GA-K).

General Assistance Program

Combined General Assistance Caseload SFY 1998 – SFY 2006

Source: ESA-ACES Data



SFY 2006	Cases	Persons	Gross Expenditures	Recoveries	Payment Per Case
July	26,852	27,216	\$8,305,198.93	\$2,395,801.15	\$309.30
August	26,884	27,250	\$8,290,154.45	\$2,829,171.48	\$308.37
September	27,114	27,497	\$8,335,611.78	\$2,566,501.28	\$307.43
October	27,220	27,623	\$8,398,817.26	\$1,914,571.69	\$308.55
November	27,206	27,587	\$8,421,252.45	\$1,908,265.16	\$309.54
December	27,397	27,782	\$8,445,494.79	\$3,193,758.91	\$308.26
January	27,487	27,850	\$8,427,400.50	\$2,185,765.64	\$306.60
February	27,839	28,221	\$8,624,064.80	\$2,575,937.42	\$309.78
March	28,391	28,772	\$8,712,178.10	\$2,602,285.72	\$306.86
April	28,404	28,792	\$8,772,134.67	\$2,386,741.02	\$308.83
May	28,527	28,908	\$8,829,816.76	\$2,824,990.69	\$309.52
June	28,645	29,033	\$8,809,992.42	\$14,453.39	\$307.56
Mo. Avg	27,664	28,044	\$8,531,009.74	\$2,283,186.96	\$308.38

Note: The combined GA caseload includes general assistance for Unemployable (GA-U), Aged (GA-A), Blind (GA-B), Disabled (GA-D), Expedited Medicaid (GA-X), Regular (GA-R) and Residing in an Institution for the Mentally Diseased (GA-I and GA-K).

General Assistance Program

Selected General Assistance –Unemployable (GA-U) Program Characteristics SFY 2005 and SFY 2006

Source: ESA-ACES Data

	SFY 2005 (July 2004 – June 2005)	SFY 2006 (July 2005 – June 2006)
Average Number of Cases Per Month (Range)	12,587 (11,472 – 13,427)	13,995 (13,107 – 14,918)
Average Number of Persons Per Month (Range)	12,633 (11,523 – 13,474)	14,033 (13,137 – 14,961)
Recipients as a Percent of State's Population Age 18 and Over	0.3%	0.3%
State Population Age 18 and Over¹	4,725,461	4,826,555
Average Persons Per Case	1.0	1.0
Average Monthly Payment Per Case (Range)²	\$297.56 (\$294.73 - \$300.37)	\$299.11 (\$296.38 - \$301.97)

¹ OFM, 2006 Population Trends for Washington State

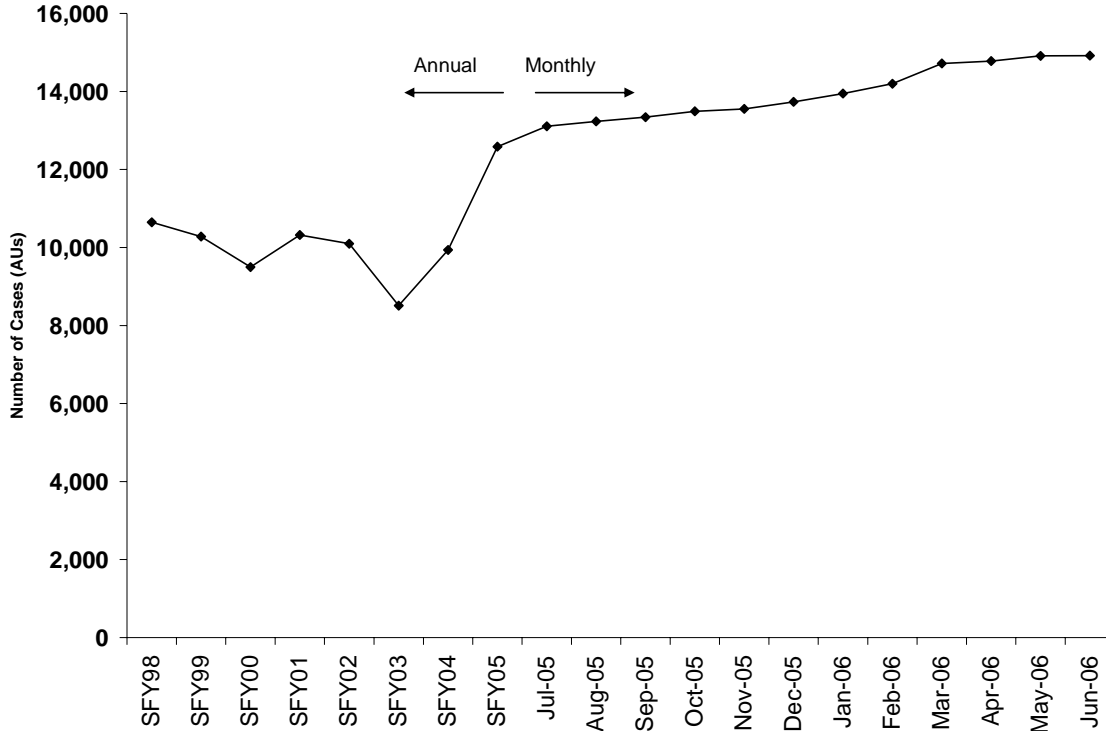
² Payments are not adjusted for refunds

Note: The GA-Unemployable (GA-U) caseload includes General Assistance for Unemployable (GA-U) only. It does NOT include Aged (GA-A), Blind (GA-B), Disabled (GA-D), Regular (GA-R), Expedited Medicaid (GA-X), and Residing in an Institution for the Mentally Diseased (GA-I and GA-K).

General Assistance Program

GA-Unemployable (GA-U) Caseload SFY 1998 - SFY 2006

Source: ESA-ACES Data



SFY 2006	Cases	Persons	Gross Expenditures	Recoveries	Payment Per Case
July	13,107	13,137	\$3,920,469.07	\$6,371.98	\$299.11
August	13,234	13,266	\$3,944,637.86	\$8,413.39	\$298.07
September	13,341	13,387	\$3,961,471.11	\$9,960.54	\$296.94
October	13,493	13,540	\$4,035,606.41	\$7,528.17	\$299.09
November	13,554	13,592	\$4,078,481.21	\$12,099.27	\$300.91
December	13,732	13,766	\$4,101,581.51	\$11,678.83	\$298.69
January	13,947	13,981	\$4,133,622.13	\$12,591.60	\$296.38
February	14,199	14,236	\$4,284,468.50	\$4,604.32	\$301.74
March	14,717	14,755	\$4,373,833.04	\$14,982.39	\$297.20
April	14,779	14,819	\$4,441,722.39	\$13,009.99	\$300.54
May	14,913	14,954	\$4,503,238.88	\$10,165.38	\$301.97
June	14,918	14,961	\$4,451,041.53	\$8,819.20	\$298.37
Mo. Avg.	13,995	14,033	\$4,185,847.80	\$10,018.76	\$299.11

Note: The GA-Unemployable (GA-U) caseload includes general assistance for Unemployable (GA-U) only. It does NOT include Aged (GA-A), Blind (GA-B), Disabled (GA-D), Regular (GA-R), Expedited Medicaid (GA-X), and Residing in an Institution for the Mentally Diseased (GA-I and GA-K).

General Assistance Program

Selected General Assistance – X Only Program Characteristics SFY 2005 and SFY 2006

Source: ESA-ACES Data

	SFY 2005 (July 2004 – June 2005)	SFY 2006 (July 2005 – June 2006)
Average Number of Cases Per Month (Range)	10,958 (10,612 – 11,433)	11,286 (11,118 – 11,531)
Average Number of Persons Per Month (Range)	10,974 (10,622 – 11,455)	11,305 (11,134 – 11,553)
Recipients as a Percent of State's Population Age 18 and Over	0.2%	0.2%
State Population Age 18 and Over¹	4,725,461	4,826,555
Average Persons Per Case	1.0	1.0
Average Monthly Payment Per Case (Range)²	\$320.99 (\$320.10 - \$321.67)	\$320.47 (\$319.61 - \$321.18)

¹ OFM, 2006 Population Trends for Washington State

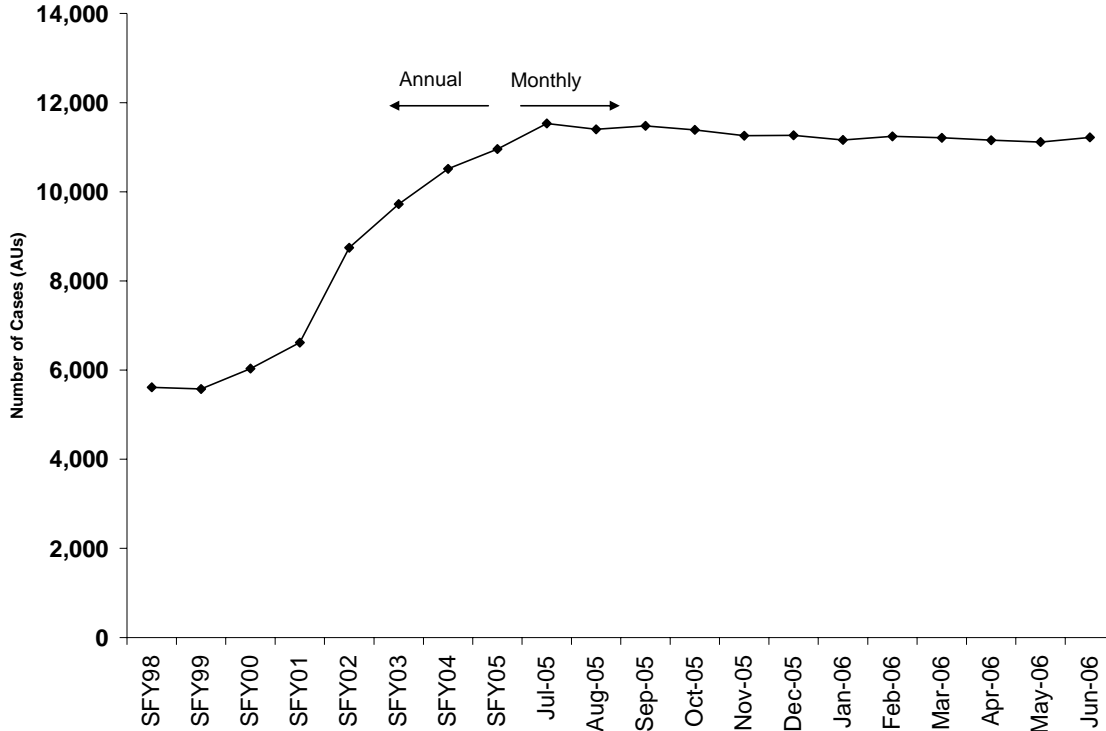
² Payments are not adjusted for refunds

Note: GA-X is restricted to General Assistance for Expedited Medicaid Only (GA-X). It does not include general assistance for Unemployable (GA-U), Aged (GA-A), Blind (GA-B), Disabled (GA-D), Regular (GA-R), and Residing in an Institution for the Mentally Diseased (GA-I and GA-K).

General Assistance Program

GA-X Only Caseload SFY 1998 - SFY 2006

Source: ESA-ACES Data



SFY 2006	Cases	Persons	Gross Expenditures	Recoveries	Payment Per Case
July	11,531	11,553	\$3,703,505.78	\$2,389,429.17	\$321.18
August	11,403	11,427	\$3,655,713.91	\$2,820,758.09	\$320.59
September	11,477	11,496	\$3,673,104.82	\$2,556,540.74	\$320.04
October	11,390	11,409	\$3,643,206.89	\$1,907,043.52	\$319.86
November	11,256	11,277	\$3,608,157.09	\$1,896,165.89	\$320.55
December	11,268	11,289	\$3,608,892.85	\$3,182,080.08	\$320.28
January	11,164	11,181	\$3,568,176.15	\$2,173,174.04	\$319.61
February	11,244	11,262	\$3,604,123.76	\$2,571,333.10	\$320.54
March	11,210	11,226	\$3,592,566.39	\$2,587,303.33	\$320.48
April	11,156	11,171	\$3,579,030.62	\$2,373,731.03	\$320.82
May	11,118	11,134	\$3,568,336.87	\$2,814,825.31	\$320.95
June	11,219	11,235	\$3,598,289.43	\$5,634.19	\$320.73
Mo. Avg.	11,286	11,305	\$3,616,925.38	\$2,273,168.21	\$320.47

Note: GA-X is restricted to General Assistance for Expedited Medicaid Only (GA-X). It does NOT include general assistance for Unemployable (GA-U), Aged (GA-A), Blind (GA-B), Disabled (GA-D), Regular (GA-R), and Residing in an Institution for the Mentally Diseased (GA-I and GA-K).

General Assistance Program

Selected General Assistance – Other Program Characteristics SFY 2005 and SFY 2006

Source: ESA-ACES Data

	SFY 2005 (July 2004 – June 2005)	SFY 2006 (July 2005 – June 2006)
Average Number of Cases Per Month (Range)	2,021 (1,831 – 2,178)	2,383 (2,214 – 2,508)
Average Number of Persons Per Month (Range)	2,316 (2,092 – 2,498)	2,712 (2,531 – 2,842)
Recipients as a Percent of State's Population Age 18 and Over	Trace	Trace
State Population Age 18 and Over¹	4,725,461	4,826,555
Average Persons Per Case	1.1	1.2
Average Monthly Payment Per Case (Range)²	\$307.01 (\$304.21 - \$310.49)	\$305.60 (\$302.67 - \$308.09)

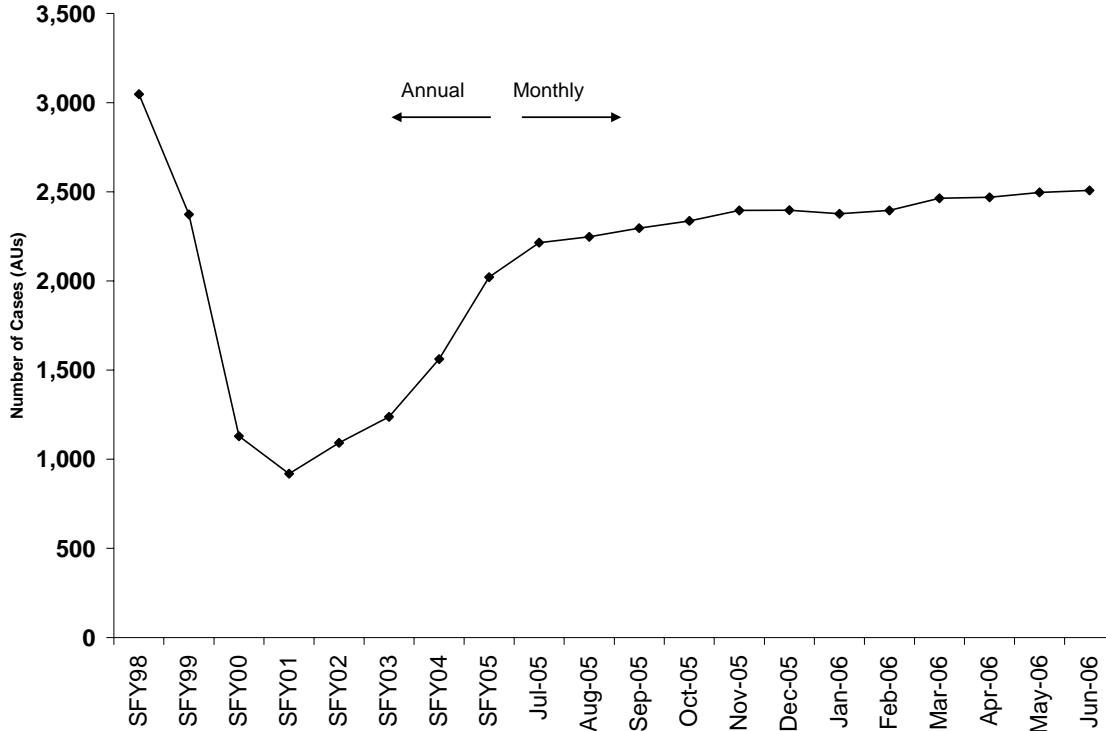
¹ OFM, 2006 Population Trends for Washington State

² Payments are not adjusted for refunds

Note: GA-Other includes Aged (GA-A), Blind (GA-B), Disabled (GA-D), Regular (GA-R), and Residing in an Institution for the Mentally Diseased (GA-I and GA-K). It does not include General Assistance for Unemployable (GA-U) or Expedited Medical (GA-X).

General Assistance Program

GA-Other Caseload SFY 1998 - SFY 2006 Source: ESA-ACES Data



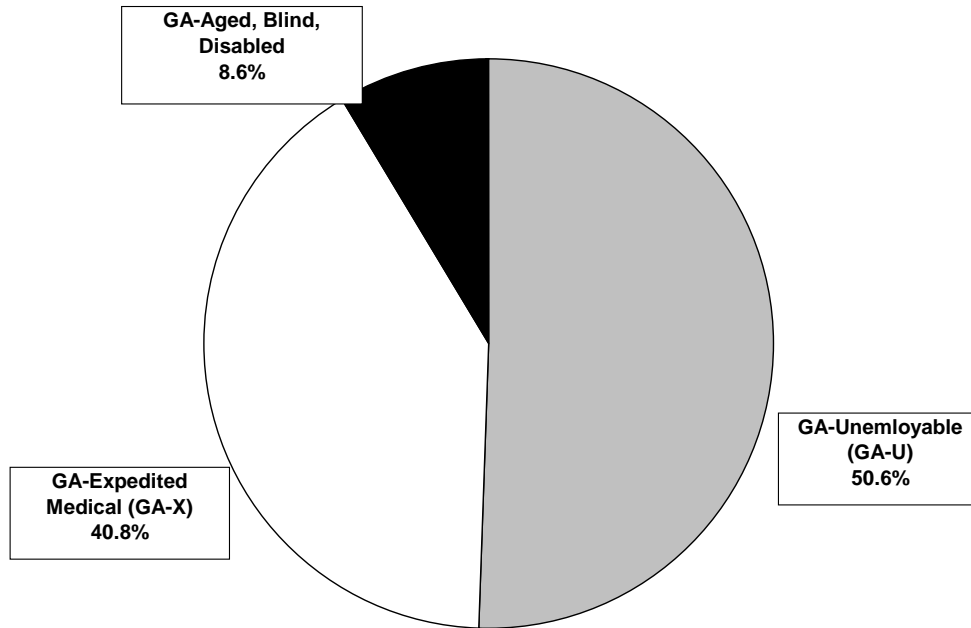
SFY 2006	Cases	Persons	Gross Expenditures	Recoveries	Payment Per Case
July	2,214	2,531	\$681,224.08	\$0.00	\$307.69
August	2,247	2,564	\$689,802.68	\$0.00	\$306.99
September	2,296	2,624	\$701,035.85	\$0.00	\$305.33
October	2,337	2,680	\$720,003.96	\$0.00	\$308.09
November	2,396	2,725	\$734,614.15	\$0.00	\$306.60
December	2,397	2,729	\$735,020.43	\$0.00	\$306.64
January	2,376	2,697	\$725,602.22	\$0.00	\$305.39
February	2,396	2,727	\$735,472.54	\$0.00	\$306.96
March	2,464	2,799	\$745,778.67	\$0.00	\$302.67
April	2,469	2,807	\$751,381.66	\$0.00	\$304.33
May	2,496	2,824	\$758,241.01	\$0.00	\$303.78
June	2,508	2,842	\$760,661.46	\$0.00	\$303.29
Mo. Avg.	2,383	2,712	\$728,236.56	\$0.00	\$305.60

Note: GA-Other includes Aged (GA-A), Blind (GA-B), Disabled (GA-D), Regular (GA-R), and Residing in an Institution for the Mentally Disabled (GA-I and GA-K). It does not include General Assistance for Unemployable (GA-U) or Expedited Medicaid (GA-X).

General Assistance Program

Combined General Assistance Caseload by Program Type SFY 1998 - SFY 2006

Source: ESA-ACES Data



SFY 2006	Combined GA Caseload	GA-U Only		GA-X Only		Other	
		Number	Percent	Number	Percent	Number	Percent
July	26,852	13,107	48.8%	11,531	42.9%	2,214	8.2%
August	26,884	13,234	49.2%	11,403	42.4%	2,247	8.4%
September	27,114	13,341	49.2%	11,477	42.3%	2,296	8.5%
October	27,220	13,493	49.6%	11,390	41.8%	2,337	8.6%
November	27,206	13,554	49.8%	11,256	41.4%	2,396	8.8%
December	27,397	13,732	50.1%	11,268	41.1%	2,397	8.7%
January	27,487	13,947	50.7%	11,164	40.6%	2,376	8.6%
February	27,839	14,199	51.0%	11,244	40.4%	2,396	8.6%
March	28,391	14,717	51.8%	11,210	39.5%	2,464	8.7%
April	28,404	14,779	52.0%	11,156	39.3%	2,469	8.7%
May	28,527	14,913	52.3%	11,118	39.0%	2,496	8.7%
June	28,645	14,918	52.1%	11,219	39.2%	2,508	8.8%
Mo. Avg.	27,664	13,995	50.6%	11,286	40.8%	2,383	8.6%

Note: U Only includes General Assistance for Unemployable (GA-U); X only includes general assistance for Expedited Medicaid (GA-X); Other includes general assistance for Aged (GA-A), Blind (GA-B), Disabled (GA-D), Regular (GA-R), and Residing in an Institution for the Mentally Diseased (GA-I and GA-K).

General Assistance Program

Combined GA Caseload Exiting to SSI or Some Other Program SFY 2006

Source: ESA-ACES Data

SFY 2006	Total Combined GA Adults	During Subsequent Month Being Reported					
		Adults Remaining On GA		Adults Moving From GA to SSI		Adults Moving From GA to Other Programs ¹ or Exiting	
		Number	Percent	Number	Percent	Number	Percent
July	27,216	25,070	92.1%	656	2.4%	1,490	5.5%
August	27,250	25,180	92.4%	604	2.2%	1,466	5.4%
September	27,497	25,422	92.5%	562	2.0%	1,513	5.5%
October	27,623	25,480	92.2%	604	2.2%	1,539	5.6%
November	27,587	25,601	92.8%	544	2.0%	1,442	5.2%
December	27,782	25,631	92.3%	567	2.0%	1,584	5.7%
January	27,850	26,021	93.4%	490	1.8%	1,339	4.8%
February	28,221	26,249	93.0%	619	2.2%	1,353	4.8%
March	28,772	26,618	92.5%	604	2.1%	1,550	5.4%
April	28,792	26,684	92.7%	612	2.1%	1,496	5.2%
May	28,908	26,712	92.4%	653	2.3%	1,543	5.3%
June	29,033	26,804	92.3%	582	2.0%	1,647	5.7%
Mo. Avg.	28,044	25,956	92.6%	591	2.1%	1,497	5.3%

Note: Left of the vertical line are clients who received GA during the month being reported. Anything to the right of the vertical line, the client received during the subsequent month.

¹ Other programs include TANF, Diversion Cash Assistance, Refugee Cash Assistance, and Alcohol/Drug Treatment.

GA-U, GA-X, and GA-Other Clients on Assistance 12 or More Consecutive Months SFY 2006

Source: ESA-ACES Data

	% of GA-U Clients on 12 or More Consecutive Months	% of GA-X Clients on 12 or More Consecutive Months	% of GA- Other Clients on 12 or More Consecutive Months
July	14.8%	36.0%	55.1%
August	15.0%	36.0%	55.6%
September	15.4%	36.1%	55.7%
October	15.8%	36.2%	56.4%
November	16.2%	36.5%	55.6%
December	16.4%	36.8%	55.2%
January	16.4%	37.3%	55.6%
February	16.4%	37.7%	55.6%
March	16.6%	37.8%	54.7%
April	16.7%	39.0%	54.2%
May	16.8%	39.4%	53.8%
June	16.9%	39.1%	54.2%

General Assistance Program

Combined GA Caseload by DSHS Region and CSO June 2006

Source: ESA-ACES Data

	Cases		Clients	
	Number	Percent	Number	Percent
Region 1				
Clarkston	96	0.3%	96	0.3%
Colfax Branch Office	50	0.2%	50	0.2%
Mattawa	10	0.0%	11	0.0%
Moses Lake	384	1.3%	389	1.3%
Newport	126	0.4%	126	0.4%
Okanogan	329	1.1%	330	1.1%
Othello	32	0.1%	33	0.1%
Republic	70	0.2%	72	0.2%
Spokane North	700	2.4%	702	2.4%
Spokane Southwest	824	2.9%	829	2.9%
Spokane Valley	678	2.4%	685	2.4%
Tri County – Colville	244	0.9%	244	0.8%
Wenatchee	570	2.0%	576	2.0%
Region 1 Call Center	72	0.3%	71	0.2%
Region 1 Total	4,185	14.6%	4,214	14.5%
Region 2				
Ellensburg	85	0.3%	85	0.3%
Kennewick	647	2.3%	658	2.3%
Pasco	382	1.3%	392	1.4%
Sunnyside	163	0.6%	167	0.6%
Walla Walla	197	0.7%	200	0.7%
Wapato	250	0.9%	254	0.9%
Yakima	840	2.9%	850	2.9%
Region 2 Call Center	0	0.0%	0	0.0%
Region 2 Total	2,564	9.0%	2,606	9.0%
Region 3				
Alderwood	893	3.1%	908	3.1%
Bellingham	814	2.8%	820	2.8%
Everett	1,018	3.6%	1,029	3.5%
Friday Harbor	13	0.0%	13	0.0%
Mt. Vernon	451	1.6%	458	1.6%
Oak Harbor	121	0.4%	123	0.4%
Skykomish Valley	439	1.5%	445	1.5%
Smokey Point	669	2.3%	678	2.3%
Region 3 Total	4,418	15.4%	4,474	15.4%

General Assistance Program

Combined GA Caseload by DSHS Region and CSO (continued)

June 2006

Source: ESA-ACES Data

	Cases		Clients	
	Number	Percent	Number	Percent
Region 4				
Auburn	5	0.0%	5	0.0%
Belltown	1,938	6.8%	1,947	6.7%
Capitol Hill	816	2.8%	827	2.8%
Federal Way	1,011	3.5%	1,031	3.6%
King Eastside	708	2.5%	750	2.6%
King North	1,267	4.4%	1,282	4.4%
King South	734	2.6%	749	2.6%
Rainier	483	1.7%	493	1.7%
Renton	723	2.5%	741	2.6%
White Center	1,142	4.0%	1,156	4.0%
Region 4 Call Center	0	0.0%	0	0.0%
Region 4 Total	8,827	30.8%	8,981	30.9%
Region 5				
Bremerton	1,053	3.7%	1,056	3.6%
Lakewood	687	2.4%	694	2.4%
Northwest WorkFirst	919	3.2%	927	3.2%
Pierce South	606	2.1%	611	2.1%
Puyallup	629	2.2%	636	2.2%
Region 5 Total	3,894	13.6%	3,924	13.5%
Region 6				
Aberdeen	370	1.3%	370	1.3%
Chehalis	443	1.5%	445	1.5%
Columbia River	827	2.9%	847	2.9%
Forks	63	0.2%	63	0.2%
Goldendale	104	0.4%	104	0.4%
Kelso	344	1.2%	344	1.2%
Long Beach	67	0.2%	67	0.2%
Neah Bay	0	0.0%	0	0.0%
Olympia	808	2.8%	812	2.8%
Port Angeles	319	1.1%	319	1.1%
Port Townsend	111	0.4%	112	0.4%
Shelton	407	1.4%	408	1.4%
South Bend	43	0.2%	43	0.1%
Stevenson	42	0.1%	42	0.1%
White Salmon	75	0.3%	76	0.3%
Region 6 Call Center	0	0.0%	0	0.0%
Region 6 Total	4,023	14.0%	4,052	14.0%

General Assistance Program

Combined GA Caseload by Home & Community Services (HCS) Offices June 2006

Source: ESA-ACES Data

	Cases		Clients	
	Number	Percent	Number	Percent
HCS Offices				
Aberdeen	9	0.0%	9	0.0%
Alderwood	33	0.1%	35	0.1%
Bellingham	21	0.1%	21	0.1%
Bremerton	20	0.1%	22	0.1%
Chehalis	5	0.0%	5	0.0%
Clarkston	0	0.0%	0	0.0%
Colville	7	0.0%	7	0.0%
Ellensburg	2	0.0%	2	0.0%
Everett	48	0.2%	49	0.2%
Holgate	241	0.8%	254	0.9%
Kelso	11	0.0%	11	0.0%
Moses Lake	13	0.0%	14	0.0%
Mt. Vernon	11	0.0%	12	0.0%
Oak Harbor	7	0.0%	7	0.0%
Okanogan	5	0.0%	5	0.0%
Pacific	2	0.0%	2	0.0%
Pasco	35	0.1%	45	0.2%
Port Angeles	4	0.0%	4	0.0%
Skykomish	8	0.0%	8	0.0%
Smokey Point	11	0.0%	11	0.0%
Spokane	60	0.2%	71	0.2%
Sunnyside	5	0.0%	6	0.0%
Tacoma	71	0.2%	73	0.3%
Toppenish-Wapato	8	0.0%	8	0.0%
Tumwater	24	0.1%	24	0.1%
Vancouver	42	0.1%	45	0.2%
Walla Walla	8	0.0%	9	0.0%
Wenatchee	7	0.0%	7	0.0%
Yakima-Ellensburg	16	0.1%	16	0.1%
HCS Office Total	734	2.6%	783	2.7%
State Total	28,645	100.0%	29,033	100.0%

Note: A number of Basic Food Program cases received services through a Home Community Service Center (HCS) administered through the Aging and Adult Services Administration. These cases are listed separately since they are not part of an Economic Services Administration Community Services Division (CSD) Community Service Office (CSO).

General Assistance Program

Combined GA Caseload by County of Residence

June 2006

Source: ESA-ACES Data

	Cases		Clients	
	Number	Percent	Number	Percent
Adams	32	0.1%	33	0.1%
Asotin	92	0.3%	92	0.3%
Benton	692	2.3%	709	2.3%
Chelan	442	1.6%	446	1.6%
Clallam	386	1.5%	386	1.5%
Clark	868	3.3%	891	3.3%
Columbia	14	0.0%	14	0.0%
Cowlitz	346	1.4%	346	1.4%
Douglas	139	0.4%	141	0.4%
Ferry	69	0.2%	71	0.2%
Franklin	375	1.3%	387	1.3%
Garfield	5	0.0%	5	0.0%
Grant	415	1.3%	422	1.3%
Grays Harbor	387	1.1%	387	1.1%
Island	154	0.5%	156	0.5%
Jefferson	115	0.4%	116	0.4%
King	9,086	33.3%	9,256	33.4%
Kitsap	1,072	3.5%	1,077	3.5%
Kittitas	90	0.3%	89	0.3%
Klickitat	179	0.5%	180	0.5%
Lewis	443	1.5%	445	1.5%
Lincoln	31	0.1%	31	0.1%
Mason	406	1.3%	407	1.3%
Okanogan	322	1.1%	323	1.1%
Pacific	111	0.4%	111	0.4%
Pend Oreille	128	0.5%	128	0.5%
Pierce	2,892	9.7%	2,919	9.7%
San Juan	23	0.1%	23	0.1%
Skagit	426	1.4%	434	1.4%
Skamania	39	0.1%	39	0.1%
Snohomish	3,110	11.2%	3,153	11.2%
Spokane	2,304	7.4%	2,329	7.4%
Stevens	249	0.9%	249	0.9%
Thurston	829	2.7%	833	2.7%
Wahkiakum	13	0.0%	13	0.0%
Walla Walla	206	0.6%	210	0.6%
Whatcom	835	2.7%	841	2.7%
Whitman	51	0.2%	51	0.2%
Yakima	1,269	4.4%	1,290	4.4%
State Total	28,645	100.0%	29,033	100.0%

General Assistance Program

General Assistance Program Client Demographics June 2006

Source: ESA-ACES Data

Characteristic	GA-U Only ²		GA-X Only ²		Other ²	
	Number	Percent	Number	Percent	Number	Percent
TOTAL	14,961	100%	11,235	100%	2,842	100%
Gender						
Female	6,112	40.9%	5,025	44.7%	1,752	61.6%
Male	8,849	59.1%	6,210	55.3%	1,090	38.4%
Race						
White	10,125	67.7%	8,244	73.4%	849	29.9%
Hispanic	956	6.4%	661	5.9%	434	15.3%
Black	1,659	11.1%	1,057	9.4%	105	3.7%
Asian/Pacific Islander	446	3.0%	192	1.7%	1,022	36.0%
Native American	606	4.1%	394	3.5%	38	1.3%
Unknown	1,169	7.8%	687	6.1%	394	13.9%
Marital Status (Adults Only)						
Separated	1,785	11.9%	1,308	11.6%	190	6.7%
Married	859	5.7%	457	4.1%	1,019	35.9%
Never Married	7,180	48.0%	5,504	49.0%	477	16.8%
Divorced	4,614	30.8%	3,636	32.4%	229	8.1%
Widowed	415	2.8%	272	2.4%	869	30.6%
Unknown	108	0.7%	58	0.5%	58	2.0%
Citizenship						
U.S. Citizen	14,023	93.7%	10,916	97.2%	617	21.7%
Resident Alien	919	6.1%	309	2.8%	2,219	78.1%
U.S. National	19	0.1%	10	0.1%	6	0.2%
INS Entry Status						
Born in U.S.	14,022	93.7%	10,918	97.2%	596	21.0%
Amerasian	9	0.1%	0	0.0%	4	0.1%
Asylee	19	0.1%	10	0.1%	13	0.5%
Cuban/Haitian Entrant	9	0.1%	4	0.0%	3	0.1%
Deportation Withheld	3	0.0%	0	0.0%	1	0.0%
Non-Refugee	651	4.4%	201	1.8%	1,991	70.1%
Refugee	248	1.7%	102	0.9%	234	8.2%
Age						
< 17 Years Old	0	0.0%	0	0.0%	0	0.0%
17 Years Old	0	0.0%	0	0.0%	0	0.0%
18 Years Old	0	0.0%	30	0.3%	68	2.4%
19 – 20 Years Old	422	2.8%	286	2.5%	29	1.0%
21 – 29 Years Old	2,177	14.6%	1,626	14.5%	59	2.1%
30 – 39 Years Old	2,772	18.5%	2,025	18.0%	58	2.0%
40 – 49 Years Old	5,252	35.1%	4,091	36.4%	124	4.4%
50 – 55 Years Old	2,832	18.9%	2,154	19.2%	100	3.5%
56 – 59 Years Old	989	6.6%	689	6.1%	60	2.1%
60 – 64 Years Old	516	3.4%	334	3.0%	57	2.0%
65+ Years Old	1	0.0%	0	0.0%	2,287	80.5%
Mean Age of Adults	42.7 Years Old		42.7 Years Old		67.6 Years Old	
Median Age of Adults	44.0 Years Old		44.0 Years Old		70.0 Years Old	

General Assistance Program

General Assistance Program Client Demographics (continued)

June 2006

Source: ESA-ACES Data

Characteristic	GA-U Only ²		GA-X Only ²		Other ²	
	Number	Percent	Number	Percent	Number	Percent
TOTAL	14,961	100%	11,235	100%	2,842	100%
Incapacity						
Emotional	6,009	40.2%	7,534	67.1%	156	5.5%
Mental	49	0.3%	89	0.8%	4	0.1%
Physical	8,398	56.1%	3,482	31.0%	391	13.8%
Other¹	505	3.4%	130	1.2%	1,554	54.7%
Unknown	0	0.0%	0	0.0%	737	25.9%
Avg. Months on Assistance Since July 1997	13.9 Months		25.9 Months		25.4 Months	

¹ Approved based on age or disability reasons

² The general assistance caseload is broken into three categories:

1. U Only includes General Assistance for Unemployable only (GA-U)
2. X Only includes General Assistance for Expedited Medicaid only (GA-X)
3. Other includes General Assistance for Aged (GA-A), Blind (GA-B), Disabled (GA-D), Regular (GA-R), and Residing in an Institution for the Mentally Diseased (GA-I and GA-K)

Length of stay reflects total cumulative months receiving General Assistance as a program, including all types of GA assistance. They need not be consecutive.