

Other Programs

PAGE

Other Programs - Highlights	1
Selected Additional Requirements-Emergent Needs (AREN) Program Characteristics, SFY 2011 and SFY 2012.....	2
AREN Caseload, SFY 2003 through SFY 2012.....	3
AREN Caseload as Percent of the TANF Caseload SFY 2003 through SFY 2012.....	4
Average Monthly AREN Caseload by Service Type, SFY 2012	5
AREN Caseload by DSHS Region and CSO, June 2012	6
AREN Caseload by County of Residence, June 2012.....	8
AREN Client Demographics, June 2012.....	9
Selected Consolidated Emergency Assistance (CEAP) Program Characteristics, SFY 2011 and SFY 2012.....	10
CEAP Caseload, SFY 2003 through SFY 2012.....	11
CEAP Caseload by DSHS Region and CSO, SFY 2012	12
CEAP Caseload by County of Residence, SFY 2012.....	14
CEAP Client Demographics, SFY 2012.....	15
Selected Diversion Cash Assistance (DCA) Program Characteristics SFY 2011 and SFY 2012.....	16
DCA Caseload, SFY 2003 through SFY 2012.....	17
DCA Caseload by DSHS Region and CSO, June 2012.....	18
DCA Caseload by County of Residence, June 2012	20
DCA Client Demographics, June 2012	21
Selected Ongoing Additional Requirements (OAR) Program Characteristics SFY 2011 and SFY 2012.....	22

Other Programs

OAR Caseload, SFY 2003 through SFY 2012	23
OAR Caseload by Service Type, SFY 2012	24
OAR Caseload by DSHS Region, CSO, and HCS Office, June 2012.....	25
OAR Caseload by County of Residence, June 2012	28
OAR Client Demographics, June 2012.....	29
OFR Total Collections, SFY2003 through SFY2012.....	30
OFR Total Collections by Category, SFY2012	31
Selected Refugee Cash Assistance (RCA) Program Characteristics SFY 2011 and SFY 2012.....	32
RCA Caseload, SFY 2003 through SFY 2012.....	33
RCA Caseload by Country of Origin, June 2012	34
RCA Caseload by DSHS Region and CSO, June 2012.....	35
RCA Caseload by County of Residence, June 2012	37
RCA Client Demographics, June 2012	38
Selected State Supplemental Payment (SSP) Program Characteristics SFY 2011 and SFY 2012.....	39
SSP Caseload, SFY 2003 through SFY 2012	40
SSP Caseload by DSHS Region, CSO, and HCS Office, June 2012.....	41
SSP Caseload by County of Residence, June 2012.....	44
SSP Client Demographics, June 2012.....	45
Washington Telephone Assistance Program (WTAP) Caseload SFY 1992 to SFY 2012.....	46
WTAP Caseload by County of Residence, SFY 2012	47

Other Programs

AREN

CEAP

DCA

OAR

OFR

RCA

SSP

WTAP

This section describes programs and services not addressed in other sections of the Briefing Book. These include: Additional Requirements – Emergent Needs (AREN); Consolidated Emergency Assistance Program¹ (CEAP); Diversion Cash Assistance (DCA); Ongoing Additional Requirements (OAR); agency billing and collection services provided by the Office of Financial Recovery (OFR); Refugee Cash Assistance (RCA); State Supplemental Payment (SSP); and Washington Telephone Assistance Program (WTAP).

Highlights:

- The average monthly AREN caseload was 396 cases in SFY 2012, compared to 707 cases in SFY 2011.
- The average monthly CEAP caseload was 76 cases in SFY 2012, compared to 27 cases in SFY 2011. A total of 453 cases received CEAP in SFY 2012.
- The average monthly DCA caseload was 365 cases in SFY 2012, compared to 560 cases in SFY 2011.
- The average monthly OAR caseload was 296 cases in SFY 2012, compared to 319 cases in SFY 2011.
- Total OFR collections declined from \$523.0 million in SFY2011 to \$429.6 million in SFY2012.
- In SFY 2012, nearly 90% of OFR collections came from these four program areas: Medicaid drug rebate (41.5%), developmental disabilities (23.1%), venter overpayments (13.3%), and mental health (10.2%).
- The average monthly RCA caseload was 348 cases in SFY 2012, compared to 464 cases in SFY 2011.
- The average monthly SSP caseload was 34,075 cases in SFY 2012, compared to 33,237 cases in SFY 2011.
- The annual total of WTAP cases was 107,455 cases in SFY 2012 from a total of 121,295 cases in SFY 2011.

¹ CEAP ran out of funds as of January 2012. A new WAC change allows the department to suspend the program when funds are exhausted. The suspension was lifted on July 1, 2012 for the start of the new fiscal year.

Other Programs

Selected AREN Program Characteristics SFY 2011 and SFY 2012

Source: ESA-ACES Data

	SFY2011 (July 2010 – June 2011)	SFY 2012 (July 2011 – June 2012)
Average Number of Cases Per Month (Range)	707 (427 – 1,156)	396 (211 – 546)
Average Number of Persons Per Month (Range)	2,044 (1,200 – 3,327)	1,116 (554 – 1,632)
Average Number of Adults Per Month (Range)	755 (446 – 1,250)	414 (208 – 602)
Average Number of Children Per Month (Range)	1,289 (754 – 2,077)	703 (346 – 1,030)
Recipients as a Percent of State's Total Population	Trace	Trace
Total Statewide Population ¹	6,767,900	6,817,770
Children as a Percent of All Recipients	63.1%	63.0%
Average Persons Per Case	2.9	2.8
Average Children Per Case	1.8	1.8
Average Children Per Adult	1.7	1.7
Average Monthly Payment Per Case (Range) ²	\$503.05 (\$451.30 – \$ 555.53)	\$476.22 (\$458.96 – \$ 491.00)

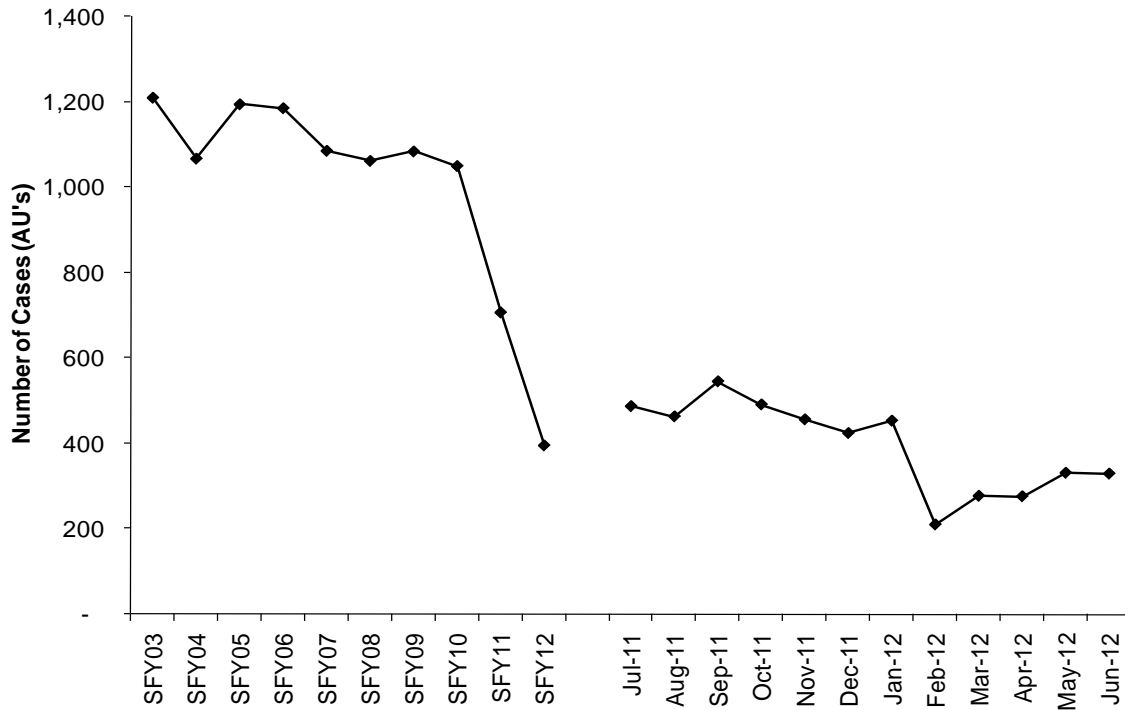
¹ OFM, 2012 Population Trends for Washington State

² Payments not adjusted for refunds.

Other Programs

AREN Caseload SFY 2003 - SFY 2012

Source: ESA-ACES Data



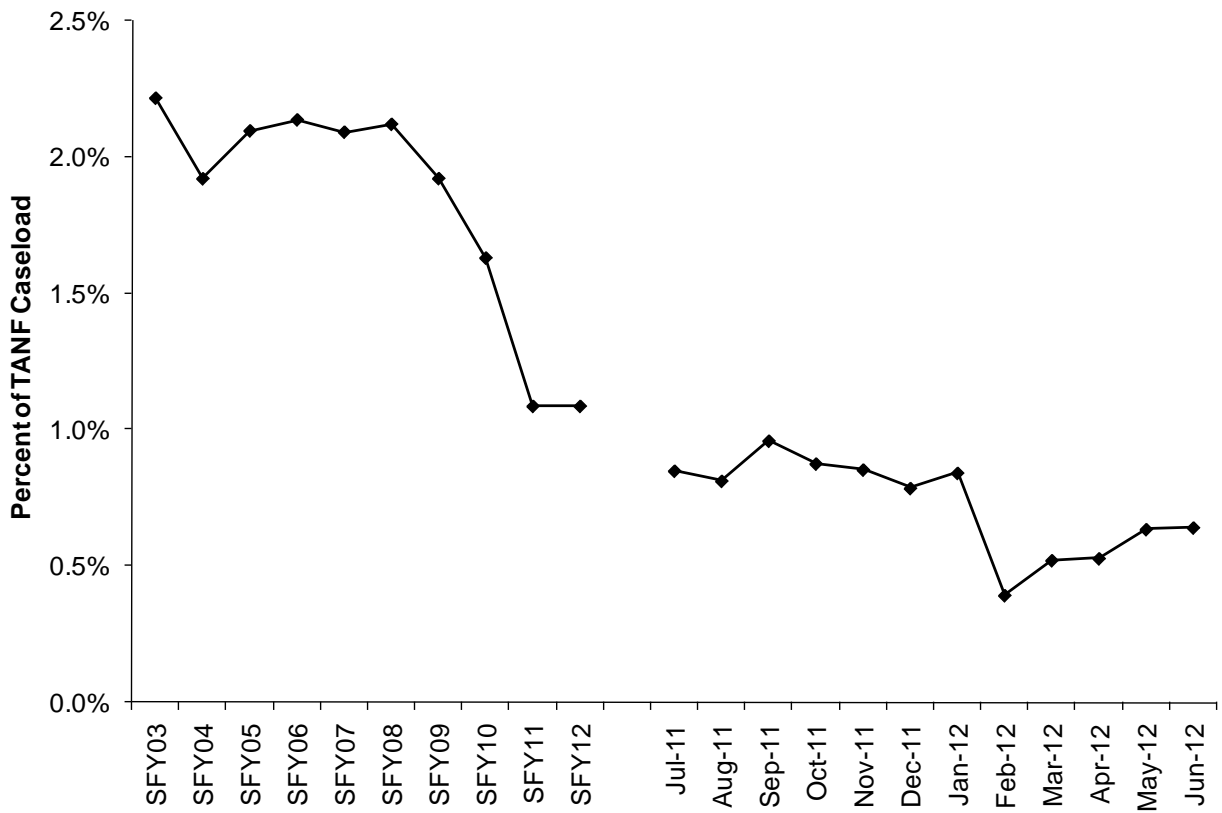
Year	Mo. Avg. Cases	Year	Mo. Avg. Cases
SFY03	1,210	SFY08	1,062
SFY04	1,067	SFY09	1,084
SFY05	1,194	SFY10	1,050
SFY06	1,185	SFY11	707
SFY07	1,086	SFY12	396

SFY 2012	Cases	Persons	Grant Expenditures	Average Payment Per Case
July	488	1,382	\$229	\$471.13
August	464	1,338	\$220	\$476.01
September	546	1,632	\$255	\$467.29
October	492	1,379	\$235	\$479.47
November	457	1,297	\$219	\$479.64
December	425	1,196	\$205	\$483.84
January	454	1,267	\$222	\$491.00
February	211	554	\$100	\$474.14
March	278	775	\$134	\$484.23
April	277	734	\$132	\$476.62
May	332	947	\$156	\$472.25
June	330	891	\$151	\$458.96
Mo. Avg.	396	1,632	188,707.42	\$476.22

Other Programs

AREN Caseload as a Percent of the TANF Caseload SFY 2003 - SFY 2012

Source: ESA-ACES Data

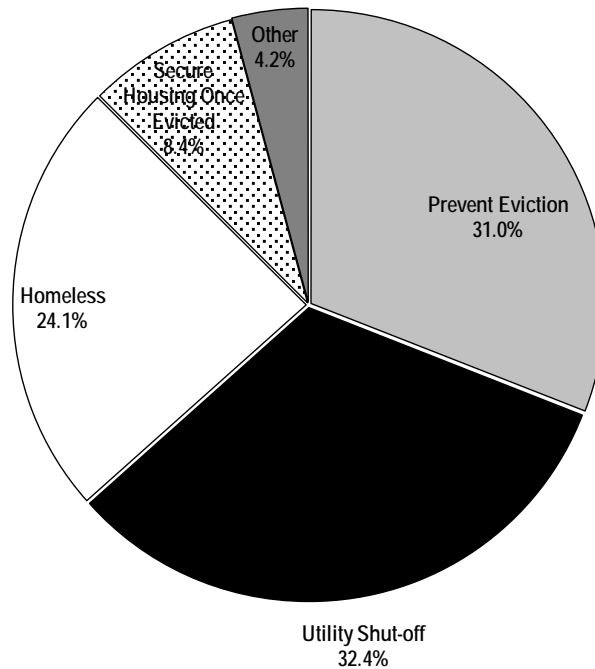


SFY 2012	TANF Caseload	AREN Caseload		AREN Total Expenditures
SFY 2012		Number	Percent	
July	57,510	488	0.8%	57,510
August	57,175	464	0.8%	57,175
September	56,963	546	1.0%	56,963
October	56,242	492	0.9%	56,242
November	53,589	457	0.9%	53,589
December	54,144	425	0.8%	54,144
January	54,010	454	0.8%	54,010
February	53,737	211	0.4%	53,737
March	53,382	278	0.5%	53,382
April	52,491	277	0.5%	52,491
May	52,326	332	0.6%	52,326
June	51,525	330	0.6%	51,525
Mo. Avg.	54,425	396	1.1%	\$188,707.42

Other Programs

Average Monthly AREN Caseload by Service Type¹ SFY 2012

Source: ESA-ACES Data



AREN Case Type	AREN Cases	
	Number	Percent
Prevent Eviction	126	31.0%
Utility Shut-off	132	32.4%
Homeless	98	24.1%
Secure Housing Once Evicted	34	8.4%
No Fuel For Heating or Cooking	8	2.0%
Obtain New Housing – Domestic Violence	4	1.0%
Obtain New Housing - Verifiable Defect	3	0.7%
Exception to Rule ²	2	0.5%
Housing Due to Natural Disaster	0	0.0%
Clothing Due to Natural Disaster	0	0.0%
No Food	0	0.0%
Utility Repair	0	0.0%
Total Cases	407	100.0%

¹ Numbers are based on the average monthly caseload by type. A number of cases received more than one type of AREN. Therefore, the sum of AREN cases by type was greater than the monthly average of unduplicated cases that received AREN.

² ETR (Exception to Rule), formerly ETP (Exception to Policy), is detailed in WAC 388-440-0001.

Other Programs

AREN Caseload by DSHS Region and CSO

June 2012

Source: ESA-ACES Data

	Cases		Clients	
	Number	Percent	Number	Percent
Region 1				
Access Spokane 032	39	11.8%	105	11.8%
Clarkston CSO	1	0.3%	4	0.4%
Colfax CSO	0	0.0%	0	0.0%
Colville CSO	0	0.0%	0	0.0%
Ellensburg CSO	3	0.9%	11	1.2%
Goldendale CSO	1	0.3%	3	0.3%
Kennewick CSO	4	1.2%	9	1.0%
Mattawa CSO	0	0.0%	0	0.0%
Moses Lake CSO	8	2.4%	20	2.2%
Newport CSO	0	0.0%	0	0.0%
Okanogan CSO	0	0.0%	0	0.0%
Othello CSO	1	0.3%	5	0.6%
R2 Processing Center	0	0.0%	0	0.0%
Republic CSO	0	0.0%	0	0.0%
Sunnyside CSO	1	0.3%	3	0.3%
Walla Walla CSO	0	0.0%	0	0.0%
Wapato CSO	2	0.6%	6	0.7%
Wenatchee CSO	2	0.6%	6	0.7%
White Salmon CSO	0	0.0%	0	0.0%
Yakima CSO	9	2.7%	20	2.2%
Region Total	71	21.5%	192	21.5%
Region 2				
Alderwood CSO	7	2.1%	18	2.0%
Auburn CSO	5	1.5%	19	2.1%
Bellingham CSO	8	2.4%	18	2.0%
Belltown CSO	3	0.9%	7	0.8%
Capitol Hill CSO	3	0.9%	8	0.9%
Everett CSO	18	5.5%	49	5.5%
Federal Way CSO	11	3.3%	37	4.2%
King Eastside CSO	4	1.2%	13	1.5%
King North CSO	8	2.4%	23	2.6%
King South CSO	0	0.0%	0	0.0%
Mt Vernon CSO	3	0.9%	9	1.0%
Oak Harbor CSO	1	0.3%	3	0.3%
Rainier CSO	5	1.5%	11	1.2%
Renton CSO	2	0.6%	5	0.6%
Sky Valley CSO	3	0.9%	7	0.8%
Smokey Point CSO	5	1.5%	13	1.5%
White Center CSO	15	4.5%	33	3.7%
Region Total	101	30.6%	273	30.6%

Other Programs

AREN Caseload by DSHS Region and CSO (continued)

June 2012

Source: ESA-ACES Data

	Cases		Clients	
	Number	Percent	Number	Percent
Region 3				
Aberdeen CSO	2	0.6%	6	0.7%
Bremerton CSO	3	0.9%	9	1.0%
Chehalis CSO	1	0.3%	2	0.2%
Columbia River CSO	38	11.5%	94	10.5%
Forks CSO	1	0.3%	3	0.3%
Friday Harbor Outstn	0	0.0%	0	0.0%
Kelso CSO	19	5.8%	53	5.9%
Lakewood CSO	26	7.9%	73	8.2%
Long Beach CSO	0	0.0%	0	0.0%
Olympia CSO	11	3.3%	24	2.7%
Pierce North CSO	18	5.5%	47	5.3%
Pierce South CSO	19	5.8%	57	6.4%
Port Angeles CSO	0	0.0%	0	0.0%
Port Townsend CSO	1	0.3%	3	0.3%
Puyallup Valley CSO	11	3.3%	31	3.5%
Shelton CSO	5	1.5%	13	1.5%
South Bend CSO	1	0.3%	5	0.6%
Stevenson CSO	2	0.6%	6	0.7%
Region Total	158	47.9%	426	47.8%
State Total	330	100.0%	891	100.0%

Other Programs

AREN Caseload by County of Residence June 2012

Source: ESA-ACES Data

County	Cases		Clients	
	Number	Percent	Number	Percent
Adams	0	0.0%	0	0.0%
Asotin	1	0.3%	4	0.4%
Benton	3	0.9%	7	0.8%
Chelan	1	0.3%	3	0.3%
Clallam	1	0.3%	3	0.3%
Clark	38	11.5%	94	10.5%
Columbia	0	0.0%	0	0.0%
Cowlitz	19	5.8%	53	5.9%
Douglas	1	0.3%	3	0.3%
Ferry	0	0.0%	0	0.0%
Franklin	1	0.3%	2	0.2%
Garfield	0	0.0%	0	0.0%
Grant	8	2.4%	20	2.2%
Grays Harbor	2	0.6%	6	0.7%
Island	1	0.3%	3	0.3%
Jefferson	1	0.3%	3	0.3%
King	56	17.0%	155	17.4%
Kitsap	3	0.9%	9	1.0%
Kittitas	3	0.9%	11	1.2%
Klickitat	1	0.3%	3	0.3%
Lewis	2	0.6%	4	0.4%
Lincoln	0	0.0%	0	0.0%
Mason	5	1.5%	13	1.5%
Okanogan	1	0.3%	5	0.6%
Pacific	1	0.3%	5	0.6%
Pend Oreille	0	0.0%	0	0.0%
Pierce	74	22.4%	208	23.3%
San Juan	0	0.0%	0	0.0%
Skagit	3	0.9%	9	1.0%
Skamania	2	0.6%	6	0.7%
Snohomish	33	10.0%	88	9.9%
Spokane	38	11.5%	102	11.4%
Stevens	1	0.3%	3	0.3%
Thurston	10	3.0%	22	2.5%
Wahkiakum	0	0.0%	0	0.0%
Walla Walla	0	0.0%	0	0.0%
Whatcom	8	2.4%	18	2.0%
Whitman	0	0.0%	0	0.0%
Yakima	12	3.6%	29	3.3%
State Total	330	100.0%	891	100.0%

Other Programs

AREN Client Demographics

June 2012

Source: ESA-ACES Data

Characteristic	All Clients		Adults Only	
	Number	Percent	Number	Percent
TOTAL	891	100.0%	349	100.0%
Gender				
Female	531	59.6%	78.8%	531
Male	360	40.4%	21.2%	360
Race				
White	438	49.2%	202	57.9%
Hispanic	79	8.9%	27	7.7%
Black	122	13.7%	50	14.3%
Asian/Pacific Islander	35	3.9%	16	4.6%
Native American	27	3.0%	13	3.7%
Unknown	190	21.3%	41	11.7%
Marital Status (Adults Only)				
Separated	42	4.7%	41	11.7%
Married	65	7.3%	64	18.3%
Never Married	747	83.8%	208	59.6%
Divorced	30	3.4%	29	8.3%
Widow	2	0.2%	2	0.6%
Unknown	5	0.6%	5	1.4%
Citizenship¹				
U.S. Citizen	854	95.8%	325	93.1%
Resident Alien	37	4.2%	24	6.9%
U.S. National	0	0.0%	0	0.0%
Age				
< 1 Year Old	64	7.2%	0	0.0%
1-5 Years Old	238	26.7%	0	0.0%
6-10 Years Old	127	14.3%	0	0.0%
11-15 Years Old	74	8.3%	0	0.0%
16-17 Years Old	32	3.6%	0	0.0%
18-20 Years Old	33	3.7%	26	7.4%
21-29 Years Old	169	19.0%	169	48.4%
30-39 Years Old	104	11.7%	104	29.8%
40-49 Years Old	35	3.9%	35	10.0%
50-55 Years Old	13	1.5%	13	3.7%
56-59 Years Old	2	0.2%	2	0.6%
Avg. Age of Children	6.0 Years Old			
Avg. Age of Adults	30.1 Years Old			

¹ See Refugee/Immigrant section, page 28-29 for glossary of Citizenship terms.

Other Programs

Selected CEAP¹ Program Characteristics SFY 2011 and SFY 2012

Source: ESA-ACES Data

	SFY 2011 (July 2010 – June 2011)	SFY 2012 (July 2011 – June 2012)
Average Number of Cases Per Month (Range)	27 (0 - 82)	76 (0 - 163)
Average Number of Persons Per Month (Range)	86 (0 – 260)	264 (0 – 644)
Average Number of Adults Per Month (Range)	34 (0 – 106)	93 (0 – 210)
Average Number of Children Per Month (Range)	52 (0 – 160)	170 (0 – 434)
Recipients as a Percent of State’s Total Population	Trace	Trace
Total Statewide Population²	6,767,900	6,817,770
Children as a Percent of All Recipients	61%	65.4%
Average Persons Per Case	3.2	3.5
Average Children Per Case	1.9	2.2
Average Children Per Adult	1.5	1.8
Average Monthly Payment Per Case (Range)³	\$ 468.04 (\$0 - \$497.89)	\$ 427.91 (\$0 - \$471.63)

¹ CEAP ran out of funds as of January 1, 2012. A new WAC change allows the department to suspend the program when funds are exhausted. The suspension was lifted on July 1, 2012 for the start of the new fiscal year.

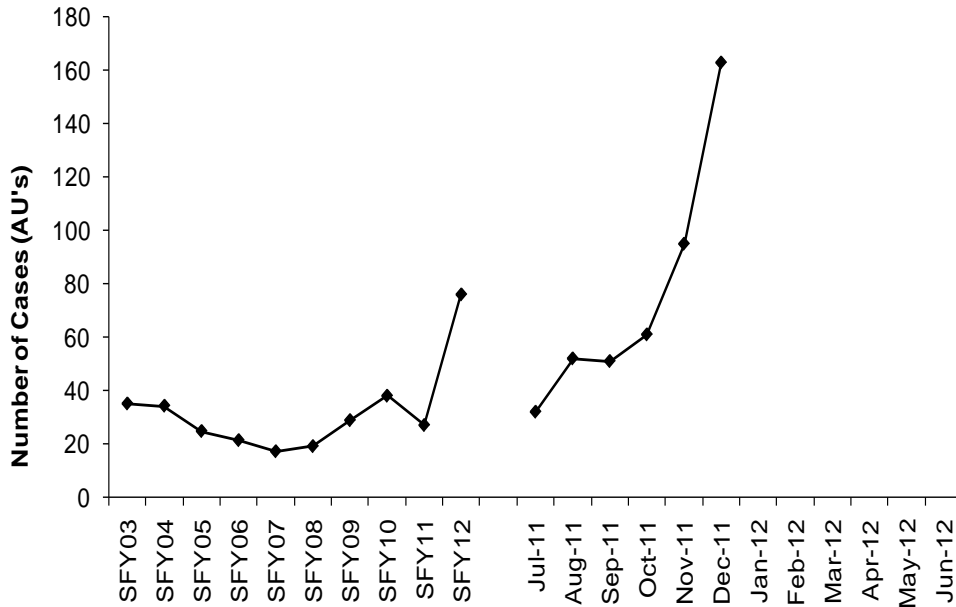
² OFM, 2012 Population Trends for Washington State

³ Payments are not adjusted for refunds.

Other Programs

CEAP Caseload SFY 2003 - SFY 2012

Source: ESA-ACES Data



Year	Mo. Avg. Cases	Year	Mo. Avg. Cases
SFY03	35	SFY08	19
SFY04	34	SFY09	29
SFY05	25	SFY10	38
SFY06	21	SFY11	27
SFY07	17	SFY12	76

SFY 2012 ¹	Cases	Persons	Grant Expenditures	Average Payment Per Case
July	32	98	\$ 13,194.60	\$ 412.33
August	52	159	\$ 19,523.18	\$ 375.45
September	51	188	\$ 21,209.00	\$ 415.86
October	61	171	\$ 23,791.31	\$ 390.02
November	95	321	\$ 40,533.57	\$ 426.67
December	163	644	\$ 76,875.06	\$ 471.63
January	0	0	--	--
February	0	0	--	--
March	0	0	--	--
April	0	0	--	--
May	0	0	--	--
June	0	0	--	--
Avg. Mo.	76	264	\$ 32,521.12	\$ 427.91
Annual Unduplicated	453	1,578	\$ 195,126.72	\$ 430.74

¹ CEAP ran out of funds as of January 1, 2012. A new WAC change allows the department to suspend the program when funds are exhausted. The suspension was lifted on July 1, 2012 for the start of the new fiscal year.

Other Programs

CEAP Annual Caseload by DSHS Region and CSO SFY 2012

Source: ESA-ACES Data

	Cases		Clients	
	Number	Percent	Number	Percent
Region 1				
Access Spokane 032	80	17.66	246	80
Clarkston CSO	1	0.22	5	1
Colfax CSO	0	0	0	0
Colville CSO	0	0	0	0
Ellensburg CSO	0	0	0	0
Goldendale CSO	6	1.32	23	6
Kennewick CSO	36	7.95	151	36
Mattawa CSO	0	0	0	0
Moses Lake CSO	6	1.32	19	6
Newport CSO	1	0.22	5	1
Okanogan CSO	0	0	0	0
Othello CSO	0	0	0	0
R2 Processing Center	0	0	0	0
Republic CSO	0	0	0	0
Sunnyside CSO	50	11.04	234	50
Walla Walla CSO	0	0	0	0
Wapato CSO	4	0.88	22	4
Wenatchee CSO	4	0.88	13	4
White Salmon CSO	1	0.22	10	1
Yakima CSO	4	0.88	17	4
Region Total	193	42.6	745	193
Region 2				
Alderwood CSO	0	0	0	0
Auburn CSO	1	0.22	2	0.13
Bellingham CSO	9	1.99	28	1.77
Belltown CSO	0	0	0	0
Capitol Hill CSO	0	0	0	0
Everett CSO	5	1.1	21	1.33
Federal Way CSO	1	0.22	2	0.13
King Eastside CSO	1	0.22	4	0.25
King North CSO	34	7.51	94	5.96
King South CSO	0	0	0	0
Mt Vernon CSO	33	7.28	154	9.76
Oak Harbor CSO	0	0	0	0
Rainier CSO	1	0.22	4	0.25
Renton CSO	0	0	0	0
Sky Valley CSO	0	0	0	0
Smokey Point CSO	11	2.43	35	2.22
White Center CSO	0	0	0	0
Region Total	96	21.19	344	21.8

Other Programs

CEAP Annual Caseload by DSHS Region and CSO (continued) SFY 2012

Source: ESA-ACES Data

	Cases		Clients	
	Number	Percent	Number	Percent
Region 3				
Aberdeen CSO	2	0.44	4	0.25
Bremerton CSO	26	5.74	66	4.18
Chehalis CSO	1	0.22	2	0.13
Columbia River CSO	94	20.75	292	18.5
Forks CSO	0	0	0	0
Friday Harbor Outstn	0	0	0	0
Kelso CSO	3	0.66	8	0.51
Lakewood CSO	5	1.1	14	0.89
Long Beach CSO	0	0	0	0
Olympia CSO	11	2.43	35	2.22
Pierce North CSO	5	1.1	12	0.76
Pierce South CSO	3	0.66	7	0.44
Port Angeles CSO	2	0.44	6	0.38
Port Townsend CSO	0	0	0	0
Puyallup Valley CSO	9	1.99	30	1.9
Shelton CSO	3	0.66	13	0.82
South Bend CSO	0	0	0	0
Stevenson CSO	0	0	0	0
Region Total	164	36.2	489	30.99
State Total	453	100	1578	100

Other Programs

CEAP Annual Caseload by County of Residence SFY 2012

Source: ESA-ACES Data

County	Cases		Clients	
	Number	Percent	Number	Percent
Adams	1	0.2%	5	0.3%
Asotin	0	0.0%	0	0.0%
Benton	19	4.2%	83	5.3%
Chelan	4	0.9%	13	0.8%
Clallam	2	0.4%	6	0.4%
Clark	92	20.3%	283	17.9%
Columbia	0	0.0%	0	0.0%
Cowlitz	2	0.4%	5	0.3%
Douglas	0	0.0%	0	0.0%
Ferry	0	0.0%	0	0.0%
Franklin	25	5.5%	107	6.8%
Grant	6	1.3%	19	1.2%
Grays Harbor	2	0.4%	4	0.3%
Island	0	0.0%	0	0.0%
Jefferson	0	0.0%	0	0.0%
King	38	8.4%	106	6.7%
Kitsap	26	5.7%	66	4.2%
Kittitas	0	0.0%	0	0.0%
Klickitat	7	1.5%	33	2.1%
Lewis	1	0.2%	2	0.1%
Lincoln	0	0.0%	0	0.0%
Mason	3	0.7%	13	0.8%
Okanogan	0	0.0%	0	0.0%
Pacific	0	0.0%	0	0.0%
Pend Oreille	0	0.0%	0	0.0%
Pierce	22	4.9%	63	4.0%
San Juan	0	0.0%	0	0.0%
Skagit	33	7.3%	154	9.8%
Skamania	0	0.0%	0	0.0%
Snohomish	16	3.5%	56	3.5%
Spokane	79	17.4%	246	15.6%
Stevens	2	0.4%	5	0.3%
Thurston	12	2.6%	39	2.5%
Wahkiakum	1	0.2%	3	0.2%
Walla Walla	0	0.0%	0	0.0%
Whatcom	9	2.0%	28	1.8%
Whitman	1	0.2%	5	0.3%
Yakima	50	11.0%	234	14.8%
State Total	453	100.0%	1,578	100.0%

Other Programs

CEAP Client Demographics SFY 2012

Source: ESA-ACES Data

Characteristic	All Clients		Adults Only	
	Number	Percent	Number	Percent
TOTAL	1,578	100.0%	559	100.0%
Gender				
Female	902	57.2%	422	75.5%
Male	676	42.8%	137	24.5%
Race				
White	604	38.3%	269	48.1%
Hispanic	571	36.2%	176	31.5%
Black	129	8.2%	44	7.9%
Asian/Pacific Islander	37	2.3%	18	3.2%
Native American	26	1.6%	10	1.8%
Unknown	211	13.4%	42	7.5%
Marital Status (Adults Only)				
Separated	75	4.8%	74	13.2%
Married	142	9.0%	142	25.4%
Never Married	1293	81.9%	278	49.7%
Divorced	57	3.6%	57	10.2%
Widow	4	0.3%	4	0.7%
Unknown	7	0.4%	4	0.7%
Citizenship¹				
U.S. Citizen	1257	79.7%	368	65.8%
Resident Alien	40	2.5%	26	4.7%
U.S. National	1	0.1%	0	0.0%
Undocumented Alien	251	15.9%	155	27.7%
Unknown	29	1.8%	10	1.8%
Age				
< 1 Year Old	30	1.9%	0	0.0%
1-5 Years Old	281	17.8%	0	0.0%
6-10 Years Old	293	18.6%	0	0.0%
11-15 Years Old	300	19.0%	0	0.0%
16-17 Years Old	94	6.0%	1	0.2%
18-20 Years Old	33	2.1%	12	2.1%
21-29 Years Old	162	10.3%	161	28.8%
30-39 Years Old	252	16.0%	252	45.1%
40-49 Years Old	120	7.6%	120	21.5%
50-55 Years Old	12	0.8%	12	2.1%
56-59 Years Old	1	0.1%	1	0.2%
60-64 Years Old	0	0.1%	0	0.0%
Avg. Age of Children	8.9 Years Old			
Avg. Age of Adults	33.9 Years Old			

¹ See Refugee/Immigrant section, page 28-29 for glossary of Citizenship terms.

Other Programs

Selected DCA Program Characteristics SFY 2011 and SFY 2012

Source: ESA-ACES Data

	SFY 2011 (July 2010 – June 2011)	SFY 2012 (July 2011 – June 2012)
Average Number of Cases Per Month (Range)	560 (290 - 933)	365 (199 - 548)
Average Number of Persons Per Month (Range)	1,782 (909 – 2,977)	1,163 (625 – 1,783)
Average Number of Adults Per Month (Range)	752 (401 – 1,243)	488 (267 – 744)
Average Number of Children Per Month (Range)	1,029 (508 – 1,743)	674 (358– 1,039)
Recipients as a Percent of State’s Total Population	Trace	Trace
Total Population¹	6,767,900	6,817,770
Children as a Percent of All Recipients	57.7%	58%
Average Persons Per Case	3.2	3.2
Average Children Per Case	1.8	1.8
Average Children Per Adult	1.4	1.4
Average Monthly Payment Per Case (Range)²	\$1,201.55 (\$961.80 – \$1,440.70)	\$1,188.79 (\$1,144.81 – \$1,199.69)

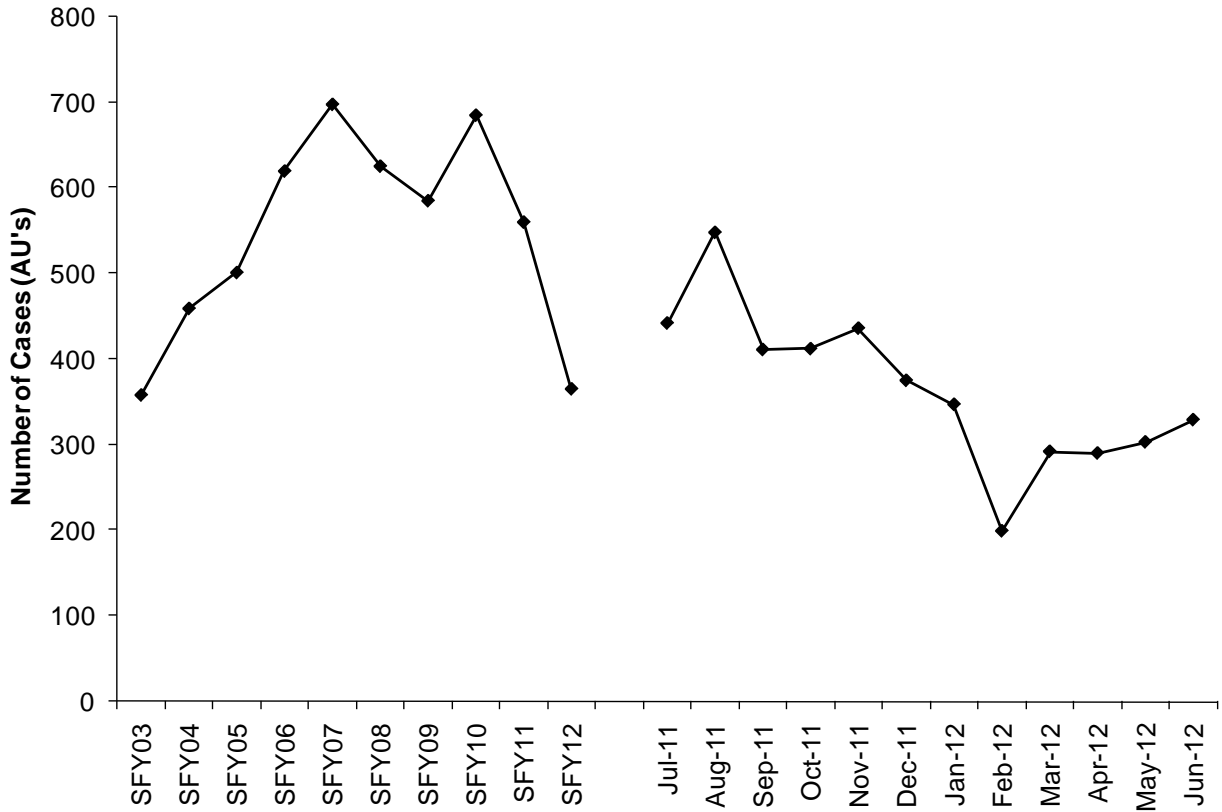
¹ OFM, 2012 Population Trends for Washington State

² Payments are not adjusted for refunds.

Other Programs

DCA Caseload SFY 2003 – SFY 2012

Source: ESA-ACES Data



SFY 2012	Cases	Persons	Grant Expenditures	Average Payment Per Case
July	442	1,433	\$506,007.42	\$1,144.81
August	548	1,783	\$651,256.83	\$1,188.42
September	411	1,294	\$488,940.19	\$1,189.64
October	412	1,310	\$493,903.96	\$1,198.80
November	436	1,324	\$523,063.95	\$1,199.69
December	375	1,234	\$443,517.36	\$1,182.71
January	347	1,152	\$412,802.05	\$1,189.63
February	199	625	\$237,522.91	\$1,193.58
March	292	877	\$347,263.06	\$1,189.26
April	290	925	\$346,081.08	\$1,193.38
May	303	969	\$362,598.80	\$1,196.70
June	329	1,027	\$393,954.15	\$1,197.43
Mo. Avg.	365	1,163	\$433,909.31	\$1,188.79

Other Programs

DCA Caseload by DSHS Region and CSO June 2012

Source: ESA-ACES Data

	Cases		Clients	
	Number	Percent	Number	Percent
Region 1				
Access Spokane 032	47	14.3%	144	14.0%
Clarkston CSO	0	0.0%	0	0.0%
Colfax CSO	0	0.0%	0	0.0%
Colville CSO	0	0.0%	0	0.0%
Ellensburg CSO	2	0.6%	11	1.1%
Goldendale CSO	1	0.3%	5	0.5%
Kennewick CSO	8	2.4%	34	3.3%
Mattawa CSO	0	0.0%	0	0.0%
Moses Lake CSO	4	1.2%	12	1.2%
Newport CSO	0	0.0%	0	0.0%
Okanogan CSO	0	0.0%	0	0.0%
Othello CSO	0	0.0%	0	0.0%
Pomeroy Outstation	0	0.0%	0	0.0%
R2 Processing Center	0	0.0%	0	0.0%
Republic CSO	0	0.0%	0	0.0%
Sunnyside CSO	2	0.6%	7	0.7%
Walla Walla CSO	3	0.9%	7	0.7%
Wapato CSO	2	0.6%	7	0.7%
Wenatchee CSO	7	2.1%	19	1.9%
White Salmon CSO	5	1.5%	13	1.3%
Yakima CSO	0	0.0%	0	0.0%
Region Total	81	24.6%	259	25.2%
Region 2				
Alderwood CSO	9	2.7%	25	2.4%
Auburn CSO	9	2.7%	28	2.7%
Bellingham CSO	12	3.6%	36	3.5%
Belltown CSO	5	1.5%	13	1.3%
Capitol Hill CSO	1	0.3%	4	0.4%
Everett CSO	10	3.0%	31	3.0%
Federal Way CSO	7	2.1%	20	1.9%
King Eastside CSO	2	0.6%	5	0.5%
King North CSO	8	2.4%	27	2.6%
King South CSO	3	0.9%	13	1.3%
Mt Vernon CSO	3	0.9%	12	1.2%
Oak Harbor CSO	0	0.0%	0	0.0%
Rainier CSO	5	1.5%	11	1.1%
Renton CSO	2	0.6%	6	0.6%
Sky Valley CSO	3	0.9%	12	1.2%
Smokey Point CSO	6	1.8%	22	2.1%
White Center CSO	7	2.1%	26	2.5%
Region Total	92	28.0%	291	28.3%

Other Programs

DCA Caseload by DSHS Region and CSO (continued)

June 2012

Source: ESA-ACES Data

	Cases		Clients	
	Number	Percent	Number	Percent
Region 3				
Aberdeen CSO	4	1.2%	11	1.1%
Bremerton CSO	4	1.2%	8	0.8%
Chehalis CSO	7	2.1%	31	3.0%
Columbia River CSO	62	18.8%	181	17.6%
Forks CSO	0	0.0%	0	0.0%
Friday Harbor Outstn	0	0.0%	0	0.0%
Kelso CSO	14	4.3%	46	4.5%
Lakewood CSO	8	2.4%	25	2.4%
Long Beach CSO	1	0.3%	2	0.2%
Olympia CSO	9	2.7%	31	3.0%
Pierce North CSO	12	3.6%	33	3.2%
Pierce South CSO	6	1.8%	19	1.9%
Port Angeles CSO	1	0.3%	1	0.1%
Port Townsend CSO	0	0.0%	0	0.0%
Puyallup Valley CSO	18	5.5%	56	5.5%
Shelton CSO	5	1.5%	18	1.8%
South Bend CSO	0	0.0%	0	0.0%
Stevenson CSO	5	1.5%	15	1.5%
Region Total	156	47.4%	477	46.4%
State Total	329	100.0%	1,027	100.0%

Other Programs

DCA Caseload by County of Residence June 2012

Source: ESA-ACES Data

County	Cases		Clients	
	Number	Percent	Number	Percent
Adams	0	0.0%	0	0.0%
Asotin	0	0.0%	0	0.0%
Benton	6	1.8%	25	2.4%
Chelan	7	2.1%	19	1.9%
Clallam	1	0.3%	1	0.1%
Clark	63	19.1%	184	17.9%
Columbia	0	0.0%	0	0.0%
Cowlitz	14	4.3%	46	4.5%
Douglas	0	0.0%	0	0.0%
Ferry	0	0.0%	0	0.0%
Franklin	2	0.6%	8	0.8%
Garfield	0	0.0%	0	0.0%
Grant	4	1.2%	12	1.2%
Grays Harbor	4	1.2%	11	1.1%
Island	0	0.0%	0	0.0%
Jefferson	0	0.0%	0	0.0%
King	51	15.5%	162	15.8%
Kitsap	4	1.2%	8	0.8%
Kittitas	2	0.6%	11	1.1%
Klickitat	6	1.8%	18	1.8%
Lewis	7	2.1%	31	3.0%
Lincoln	0	0.0%	0	0.0%
Mason	5	1.5%	18	1.8%
Okanogan	0	0.0%	0	0.0%
Pacific	1	0.3%	2	0.2%
Pend Oreille	0	0.0%	0	0.0%
Pierce	43	13.1%	129	12.6%
San Juan	0	0.0%	0	0.0%
Skagit	3	0.9%	12	1.2%
Skamania	5	1.5%	15	1.5%
Snohomish	27	8.2%	85	8.3%
Spokane	48	14.6%	147	14.3%
Stevens	0	0.0%	0	0.0%
Thurston	8	2.4%	28	2.7%
Wahkiakum	0	0.0%	0	0.0%
Walla Walla	3	0.9%	7	0.7%
Whatcom	12	3.6%	36	3.5%
Whitman	0	0.0%	0	0.0%
Yakima	3	0.9%	12	1.2%
State Total	329	100.0%	1,027	100.0%

Other Programs

DCA Client Demographics

June 2012

Source: ESA-ACES Data

Characteristic	All Clients		All Adults	
	Number	Percent	Number	Percent
TOTAL	1,027	100.0%	429	100.0%
Gender				
Female	604	58.8%	305	71.1%
Male	423	41.2%	124	28.9%
Race				
White	569	55.4%	276	64.3%
Hispanic	121	11.8%	48	11.2%
Black	81	7.9%	36	8.4%
Asian/Pacific Islander	50	4.9%	20	4.7%
Native American	8	0.8%	2	0.5%
Unknown	198	19.3%	47	11.0%
Marital Status (Adults Only)				
Separated	39	3.8%	38	8.9%
Married	142	13.8%	140	32.6%
Never Married	792	77.1%	197	45.9%
Divorced	50	4.9%	50	11.7%
Widowed	0	0.0%	0	0.0%
Unknown	4	0.4%	4	0.9%
Citizenship¹				
U.S. Citizen	987	96.1%	399	93.0%
Resident Alien	39	3.8%	30	7.0%
U.S. National	1	0.1%	-	0.0%
Age				
< 1 Year Old	61	5.9%	-	0.0%
1-5 Years Old	223	21.7%	-	0.0%
6-10 Years Old	171	16.7%	-	0.0%
11-15 Years Old	105	10.2%	-	0.0%
16-17 Years Old	34	3.3%	-	0.0%
18-20 Years Old	22	2.1%	18	4.2%
21-29 Years Old	169	16.5%	169	39.4%
30-39 Years Old	169	16.5%	169	39.4%
40-49 Years Old	63	6.1%	63	14.7%
50-55 Years Old	9	0.9%	9	2.1%
56-59 Years Old	1	0.1%	1	0.2%
60-64 Years Old	0	0.0%	0	0.0%
Avg. Age of Children	6.7 Years Old			
Avg. Age of Adults	31.7 Years Old			

¹ See Refugee/Immigrant section, page 28-29 for glossary of Citizenship terms.

Other Programs

Selected OAR Program Characteristics SFY 2011 and SFY 2012

Source: ESA-ACES Data

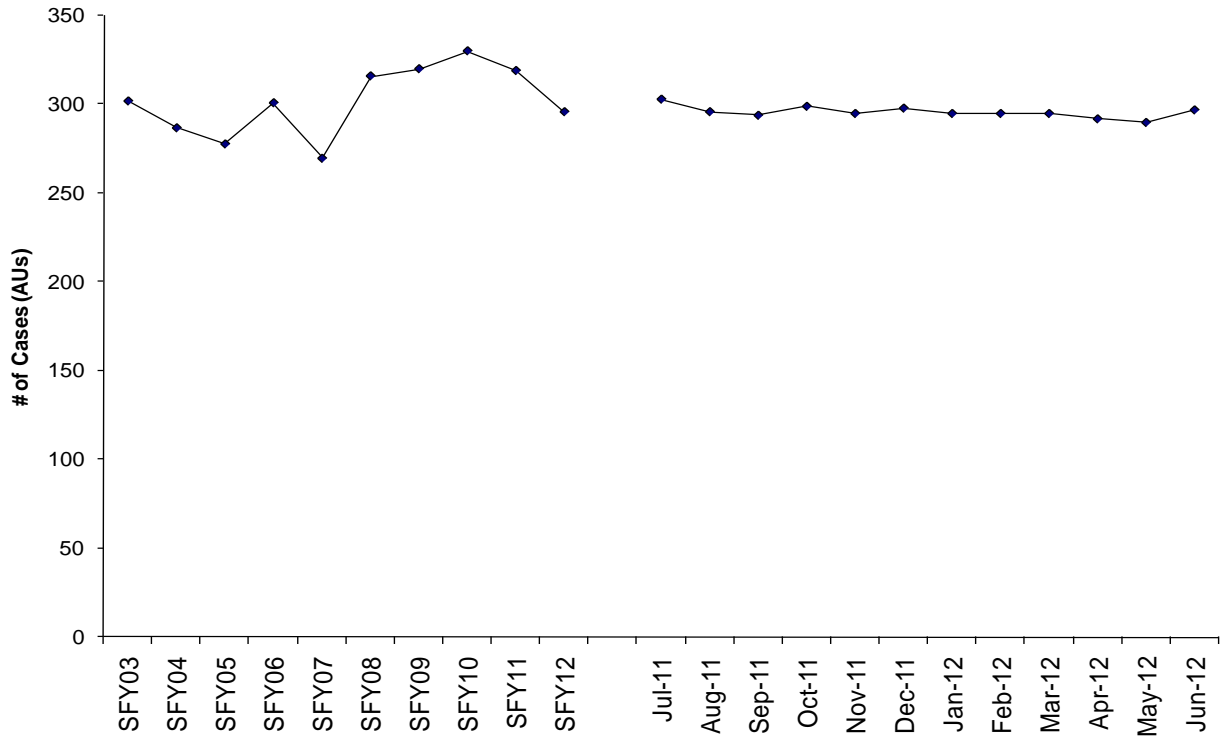
	SFY 2011 (July 2010 – June 2011)	SFY 2012 (July 2011 – June 2012)
Average Number of Cases Per Month (Range)	319 (302 - 330)	296 (290 - 303)
Average Number of Persons Per Month (Range)	326 (308 - 338)	303 (293 - 312)
Average Number of Adults Per Month (Range)	316 (298 - 327)	294 (287 - 302)
Average Number of Children Per Month (Range)	11 (6-14)	10 (6-13)
Recipients as a Percent of State's Total Population	Trace	Trace
Total Statewide Population¹	6,767,900	6,817,770
Children as a Percent of All Recipients	3.4%	3.3%
Average Persons Per Case	1	1
Average Children Per Case	0	0
Average Children Per Adult	0	0
Average Monthly Payment Per Case (Range)²	\$46.68 (\$45.24 – \$48.16)	\$44.04 (\$42.50 – \$45.18)

¹ OFM, 2012 Population Trends for Washington State

² Payments are not adjusted for refunds.

Other Programs

OAR Caseload SFY 2003 - SFY 2012 Source: ESA-ACES Data



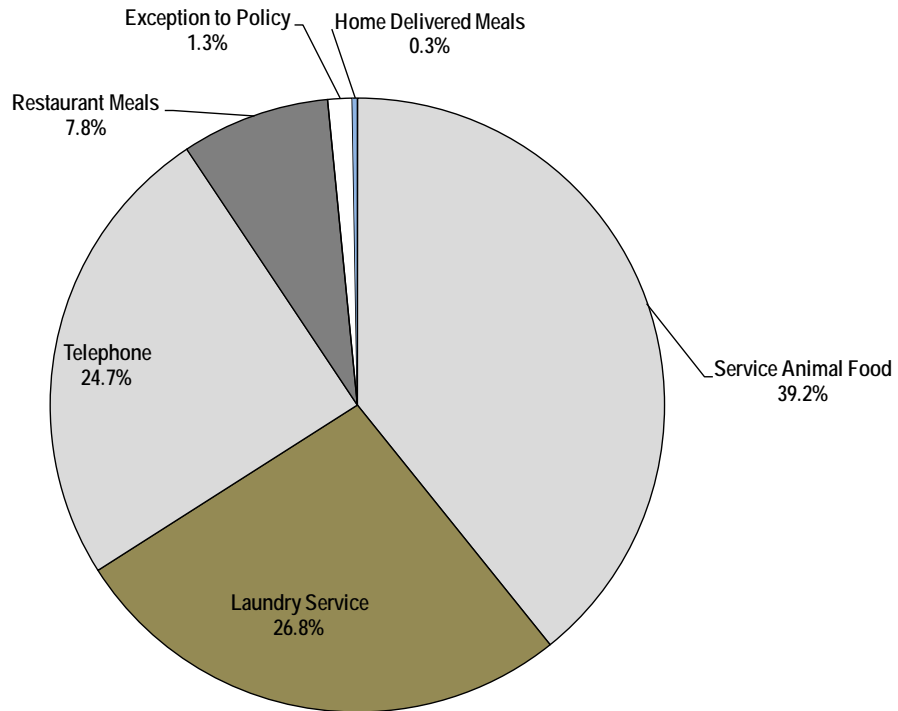
Year	Mo. Avg. Cases	Year	Mo. Avg. Cases
SFY03	302	SFY08	316
SFY04	287	SFY09	320
SFY05	278	SFY10	330
SFY06	301	SFY11	319
SFY07	270	SFY12	296

SFY 2012	Cases	Persons	Total Expenditures	Average Payment Per Case
July	303	312	\$13,382.58	\$44.17
August	296	304	\$13,075.38	\$44.17
September	294	303	\$12,991.55	\$44.19
October	299	308	\$13,413.53	\$44.86
November	295	304	\$13,327.35	\$45.18
December	298	301	\$13,252.37	\$44.47
January	295	306	\$12,833.67	\$43.50
February	295	305	\$12,841.07	\$43.53
March	295	305	\$13,146.47	\$44.56
April	292	300	\$12,964.32	\$44.40
May	290	293	\$12,584.23	\$43.39
June	297	300	\$12,623.27	\$42.50
Mo. Avg.	296	303	\$13,036.32	\$44.04

Other Programs

Average Monthly OAR Caseload by Service Type¹ SFY 2012

Source: ESA-ACES Data



OAR Case Type	OAR Cases	
	Number	Percent
Service Animal Food	151	39.2%
Laundry Service	103	26.8%
Telephone	95	24.7%
Restaurant Meals	30	7.8%
Exception to Policy ²	5	1.3%
Home Delivered Meals	1	0.3%
Total Cases	385	100%

¹ Numbers are based on the average monthly caseload by type. Several cases received more than one type of OAR. Therefore, the sum of OAR cases by type may sum to more than the monthly average of unduplicated cases that received OAR.

² ETR (Exception to Rule), formerly ETP (Exception to Policy), is detailed in WAC 388-440-0001.

Other Programs

OAR Caseload by DSHS Region, CSO, and HCS Office June 2012

Source: ESA-ACES Data

	Cases		Clients	
	Number	Percent	Number	Percent
Region 1				
Access Spokane 032	8	2.7%	8	2.7%
Clarkston CSO	0	0.0%	0	0.0%
Colfax CSO	0	0.0%	0	0.0%
Colville CSO	0	0.0%	0	0.0%
Ellensburg CSO	0	0.0%	0	0.0%
Goldendale CSO	0	0.0%	0	0.0%
Kennewick CSO	0	0.0%	0	0.0%
Mattawa CSO	0	0.0%	0	0.0%
Moses Lake CSO	0	0.0%	0	0.0%
Newport CSO	0	0.0%	0	0.0%
Okanogan CSO	0	0.0%	0	0.0%
Othello CSO	0	0.0%	0	0.0%
R2 Processing Center	0	0.0%	0	0.0%
Republic CSO	0	0.0%	0	0.0%
Sunnyside CSO	0	0.0%	0	0.0%
Walla Walla CSO	0	0.0%	0	0.0%
Wapato CSO	0	0.0%	0	0.0%
Wenatchee CSO	1	0.3%	1	0.3%
White Salmon CSO	0	0.0%	0	0.0%
Yakima CSO	0	0.0%	0	0.0%
Region Total	9	3.0%	9	3.0%
Region 2				
Alderwood CSO	1	0.3%	4	1.3%
Auburn CSO	0	0.0%	0	0.0%
Bellingham CSO	2	0.7%	2	0.7%
Belltown CSO	1	0.3%	1	0.3%
Capitol Hill CSO	0	0.0%	0	0.0%
Everett CSO	3	1.0%	3	1.0%
Federal Way CSO	0	0.0%	0	0.0%
King Eastside CSO	0	0.0%	0	0.0%
King North CSO	0	0.0%	0	0.0%
King South CSO	0	0.0%	0	0.0%
Mt Vernon CSO	2	0.7%	2	0.7%
Oak Harbor CSO	1	0.3%	1	0.3%
Rainier CSO	0	0.0%	0	0.0%
Renton CSO	0	0.0%	0	0.0%
Sky Valley CSO	0	0.0%	0	0.0%
Smokey Point CSO	0	0.0%	0	0.0%
White Center CSO	4	1.3%	4	1.3%
Region Total	14	4.7%	17	5.7%

Other Programs

OAR Caseload by DSHS Region, CSO, and HCS Office¹ (continued) June 2012

Source: ESA-ACES Data

	Cases		Clients	
	Number	Percent	Number	Percent
Region 3				
Aberdeen CSO	3	1.0%	3	1.0%
Bremerton CSO	1	0.3%	1	0.3%
Chehalis CSO	1	0.3%	1	0.3%
Columbia River CSO	0	0.0%	0	0.0%
Forks CSO	0	0.0%	0	0.0%
Friday Harbor Outstn	0	0.0%	0	0.0%
Kelso CSO	1	0.3%	1	0.3%
Lakewood CSO	2	0.7%	2	0.7%
Long Beach CSO	0	0.0%	0	0.0%
Olympia CSO	2	0.7%	2	0.7%
Pierce North CSO	1	0.3%	1	0.3%
Pierce South CSO	0	0.0%	0	0.0%
Port Angeles CSO	7	2.4%	7	2.3%
Port Townsend CSO	0	0.0%	0	0.0%
Puyallup Valley CSO	0	0.0%	0	0.0%
Shelton CSO	0	0.0%	0	0.0%
South Bend CSO	0	0.0%	0	0.0%
Stevenson CSO	0	0.0%	0	0.0%
Region Total	18	6.1%	18	6.0%
HCS Region 1				
Clarkston Hcs Office	1	0.3%	1	0.3%
Colville Hcs Office	0	0.0%	0	0.0%
Ellensburg Hcs	0	0.0%	0	0.0%
Moses Lk Hcs Office	0	0.0%	0	0.0%
Okanogan Hcs Office	0	0.0%	0	0.0%
Spokane Hcs Office	11	3.7%	11	3.7%
Sunnyside Hcs Office	0	0.0%	0	0.0%
Tri-Cities Hcs Ofc	0	0.0%	0	0.0%
Walla Walla Hcs Ofc	1	0.3%	1	0.3%
Wapato HCS	0	0.0%	0	0.0%
Wenatchee HCS Office	0	0.0%	0	0.0%
Yakima HCS Office	2	0.7%	2	0.7%
Region Total	15	5.1%	15	5.0%

¹ A number of OAR cases received services through a Home Community Service Center (HCS) administered through the Aging and Adult Services Administration. These cases are listed separately since they are not part of a Community Services Division (CSD) Community Service Office.

Other Programs

OAR Caseload by DSHS Region, CSO, and HCS Office (continued) June 2012

Source: ESA-ACES Data

	Cases		Clients	
	Number	Percent	Number	Percent
HCS Region 2				
Alderwood HCS Office	18	6.1%	18	6.0%
Bellingham HCS Ofc	1	0.3%	1	0.3%
Everett HCS Office	74	24.9%	74	24.7%
Holgate HCS Office	3	1.0%	3	1.0%
Mt Vernon HCS Office	1	0.3%	1	0.3%
Oak Harbor HCS	0	0.0%	0	0.0%
Skykomish HCS Office	2	0.7%	2	0.7%
Smokey Point HCS	3	1.0%	3	1.0%
Region Total	102	34.3%	102	34.0%
HCS Region 3				
Aberdeen HCS Office	0	0.0%	0	0.0%
Bremerton HCS Office	1	0.3%	1	0.3%
Chehalis HCS Office	0	0.0%	0	0.0%
Kelso HCS	1	0.3%	1	0.3%
Lacey HCS Office	0	0.0%	0	0.0%
Olympia HCS Office	1	0.3%	1	0.3%
Pacific County HCS	1	0.3%	1	0.3%
Port Angeles HCS	1	0.3%	1	0.3%
Puyallup HCS Office	0	0.0%	0	0.0%
Tacoma HCS Office	0	0.0%	0	0.0%
Vancouver HCS	0	0.0%	0	0.0%
Region Total	5	1.7%	5	1.7%
WASHCAP¹	129	43.4%	129	43.0%
State Total	297	100.0%	300	100.0%

¹ The WASHCAP office is part of the Statewide Customer Service Call Center (CSC).

Other Programs

OAR Caseload by County of Residence June 2012

Source: ESA-ACES Data

County	Cases		Clients	
	Number	Percent	Number	Percent
Adams	0	0.0%	0	0.0%
Asotin	1	0.3%	1	0.3%
Benton	3	1.0%	3	1.0%
Chelan	1	0.3%	1	0.3%
Clallam	11	3.7%	11	3.7%
Clark	7	2.4%	7	2.3%
Columbia	0	0.0%	0	0.0%
Cowlitz	5	1.7%	5	1.7%
Douglas	0	0.0%	0	0.0%
Ferry	0	0.0%	0	0.0%
Franklin	0	0.0%	0	0.0%
Garfield	0	0.0%	0	0.0%
Grant	1	0.3%	1	0.3%
Grays Harbor	14	4.7%	14	4.7%
Island	4	1.3%	4	1.3%
Jefferson	2	0.7%	2	0.7%
King	25	8.4%	25	8.3%
Kitsap	9	3.0%	9	3.0%
Kittitas	0	0.0%	0	0.0%
Klickitat	0	0.0%	0	0.0%
Lewis	1	0.3%	1	0.3%
Lincoln	0	0.0%	0	0.0%
Mason	5	1.7%	5	1.7%
Okanogan	1	0.3%	1	0.3%
Pacific	1	0.3%	1	0.3%
Pend Oreille	1	0.3%	1	0.3%
Pierce	19	6.4%	19	6.3%
San Juan	0	0.0%	0	0.0%
Skagit	7	2.4%	7	2.3%
Skamania	0	0.0%	0	0.0%
Snohomish	116	39.1%	119	39.7%
Spokane	33	11.1%	33	11.0%
Stevens	0	0.0%	0	0.0%
Thurston	9	3.0%	9	3.0%
Wahkiakum	0	0.0%	0	0.0%
Walla Walla	2	0.7%	2	0.7%
Whatcom	14	4.7%	14	4.7%
Whitman	0	0.0%	0	0.0%
Yakima	5	1.7%	5	1.7%
State Total	297	100.0%	300	100.0%

Other Programs

OAR Client Demographics

June 2012

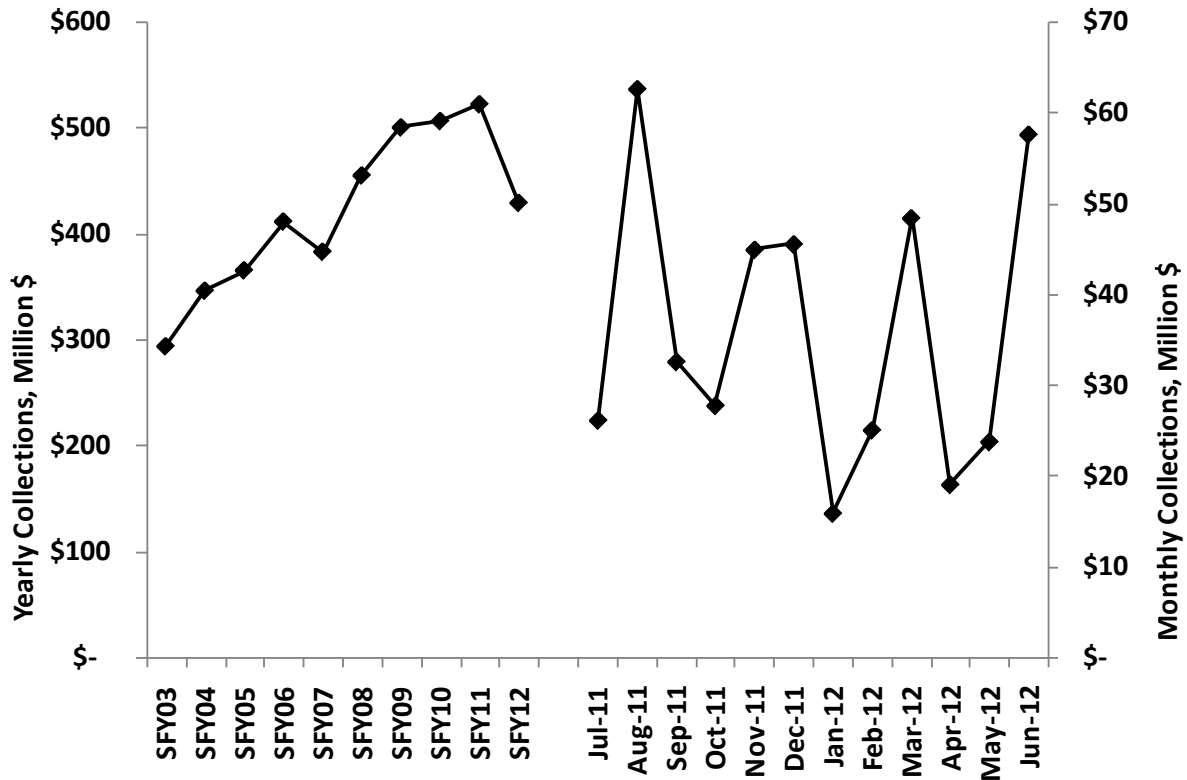
Source: ESA-ACES Data

Characteristic	Number	Percent
TOTAL	300	100%
Gender		
Female	217	72.3%
Male	83	27.7%
Race		
White	234	78.0%
Hispanic	9	3.0%
Black	5	1.7%
Asian/Pacific Islander	18	6.0%
Native American	7	2.3%
Unknown	27	9.0%
Marital Status (Adults Only)		
Separated	24	8.0%
Married	43	14.3%
Never Married	108	36.0%
Divorced	87	29.0%
Widowed	34	11.3%
Unknown	4	1.3%
Citizenship		
U.S. Citizen	265	88.3%
Resident Alien	34	11.3%
U.S. National	1	0.3%
Age		
< 1 Year Old	1	0.3%
1-5 Years Old	4	1.3%
6-10 Years Old	2	0.7%
11-15 Years Old	1	0.3%
16-17 Years Old	10	3.3%
18-20 Years Old	25	8.3%
21-29 Years Old	45	15.0%
30-39 Years Old	39	13.0%
40-49 Years Old	31	10.3%
50-55 Years Old	40	13.3%
56-59 Years Old	102	34.0%
60-64 Years Old	1	0.3%
65+ Years Old	4	1.3%
Avg. Age of Adults	58.8	

Other Programs

OFR Total Collections SFY2003 – SFY2012

Source: Office of Financial Recovery

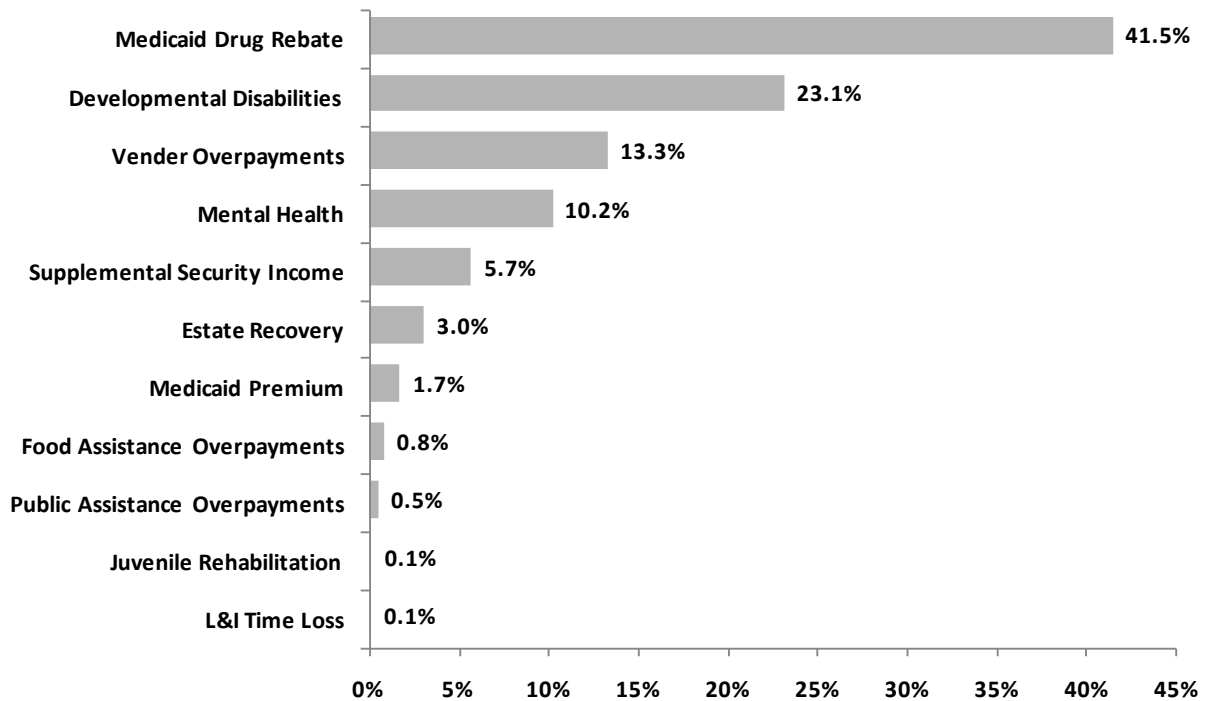


Year	Total Collections	Year	Total Collections
SFY03	\$293,790,698	SFY08	\$455,621,170
SFY04	\$346,440,101	SFY09	\$501,094,673
SFY05	\$365,748,404	SFY10	\$507,122,495
SFY06	\$411,945,972	SFY11	\$523,043,246
SFY07	\$383,371,727	SFY12	\$429,598,175

Other Programs

OFR Total Collections by Program SFY2012

Source: Office of Financial Recovery



Program	SFY2011	SFY2012
Public Assistance Overpayments	\$2,629,816	\$2,024,251
L&I Time Loss	\$493,995	\$323,701
Vender Overpayments	\$90,372,789	\$57,207,442
Estate Recovery	\$11,912,764	\$12,981,496
Food Assistance Overpayments	\$3,238,113	\$3,417,961
Medicaid Premium	\$7,227,135	\$7,317,927
Medicaid Drug Rebate	\$191,362,695	\$178,156,780
Supplemental Security Income	\$38,975,330	\$24,358,656
Juvenile Rehabilitation	\$647,580	\$505,187
Developmental Disabilities	\$127,215,422	\$99,449,969
Mental Health	\$48,967,607	\$43,854,805
Total	\$523,043,246	\$429,598,175

Other Programs

Selected RCA Program Characteristics SFY 2011 and SFY 2012

Source: ESA-ACES Data

	SFY11 (July 2010 – June 2011)	SFY12 (July 2011– June 2012)
Average Number of Cases Per Month (Range)	464 (304 - 551)	348 (291 - 405)
Average Number of Persons Per Month (Range)	515 (333 - 612)	377 (315 - 440)
Recipients as a Percent of State's Total Population	Trace	Trace
State Total Population ¹	6,767,900	6,817,770
Recipients as a Percent of State's Population Age 18 and Over	Trace	Trace
State Population Age 18 and Over ¹	5,19,318	5,244,275
Average Persons Per Case	1.1	1.1
Average Monthly Payment Per Case (Range) ²	\$322.12 (\$276.88 - \$345.32)	\$278.64 (\$263.71 - \$288.59)

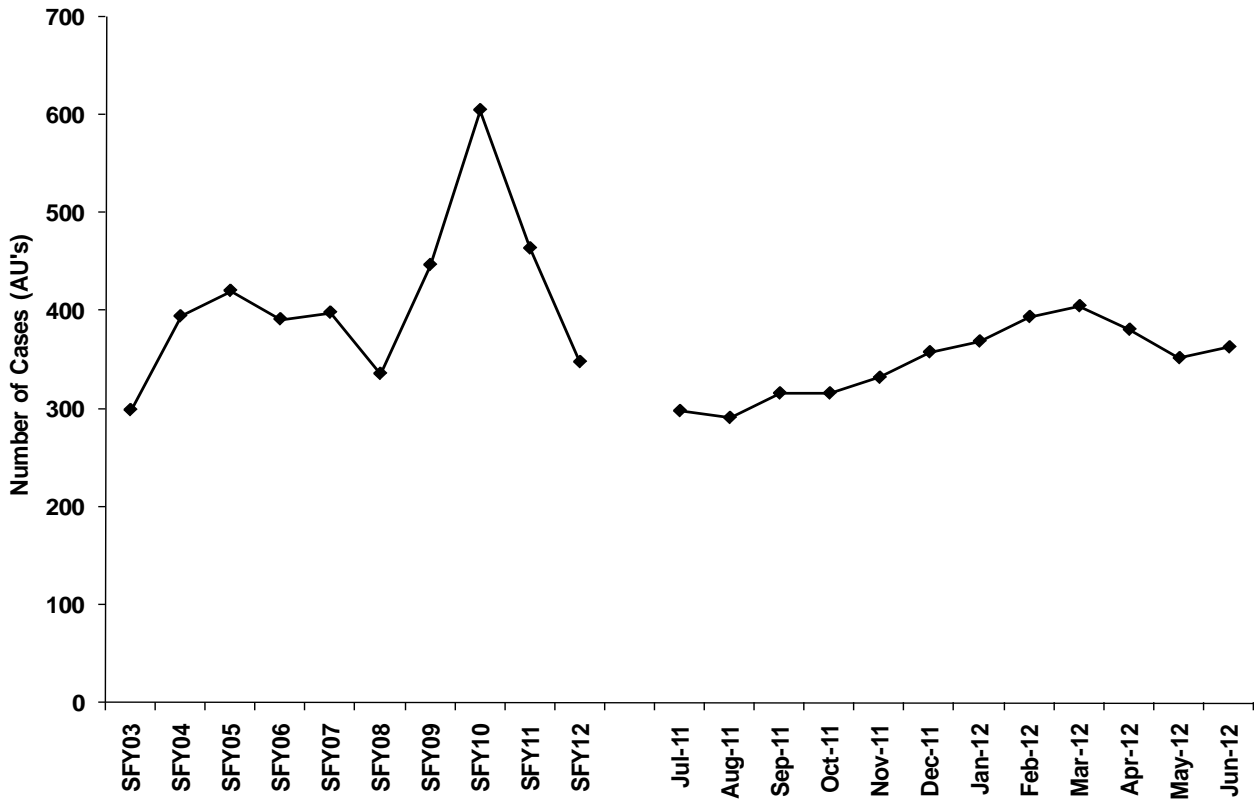
¹ OFM, 2012 Population Trends for Washington State.

² Payments are not adjusted for refunds.

Other Programs

RCA Caseload SFY 2003 - SFY 2012

Source: ESA-ACES Data



Year	Mo. Avg. Cases	Year	Mo. Avg. Cases
SFY03	299	SFY08	336
SFY04	395	SFY09	447
SFY05	421	SFY10	605
SFY06	392	SFY11	464
SFY07	398	SFY12	348

SFY2012	Cases	Persons	Grant Expenditures	Avg. Payment Per Case
July	298	324	\$ 79,646.00	\$ 267.27
August	291	315	\$ 79,747.50	\$ 274.05
September	316	339	\$ 83,331.50	\$ 263.71
October	316	341	\$ 87,590.50	\$ 277.19
November	332	359	\$ 94,360.41	\$ 284.22
December	358	385	\$ 100,858.28	\$ 281.73
January	369	398	\$ 103,370.28	\$ 280.14
February	394	425	\$ 110,141.56	\$ 279.55
March	405	440	\$ 113,065.28	\$ 279.17
April	381	416	\$ 109,952.28	\$ 288.59
May	352	383	\$ 99,399.28	\$ 282.38
June	363	398	\$ 102,119.28	\$ 281.32
Mo. Avg.	348	377	\$ 96,965.18	\$ 278.64

Other Programs

RCA Caseload by Country of Origin

June 2012

Source: ESA-ACES Data

Country	Number of Persons	Percent of Statewide Cases
AFGHANISTAN	4	1.0%
ARGENTINA	1	0.3%
BANGLADESH	1	0.3%
BHUTAN	45	11.3%
BULGARIA	3	0.8%
BURMA	35	8.8%
CHINA	2	0.5%
COLUMBIA	2	0.5%
CONGO	5	1.3%
CUBA	5	1.3%
ECUADOR	1	0.3%
EGYPT	1	0.3%
ETHIOPIA	24	6.0%
ERITREA	24	6.0%
GAMBIA, THE	5	1.3%
IRAN	23	5.8%
IRAQ	33	8.3%
KENYA	6	1.5%
KOREA (NORTH)	1	0.3%
MALAWI	1	0.3%
MALAYSIA	1	0.3%
MEXICO	3	0.8%
MOLDOVA	15	3.8%
MONGOLIA	2	0.5%
MOROCCO	1	0.3%
NEPAL	7	1.8%
NIGERIA	1	0.3%
PAKISTAN	1	0.3%
ROMANIA	4	1.0%
RUSSIA	16	4.0%
SAINT MARTIN	7	1.8%
SOMALIA	49	12.3%
SUDAN	6	1.5%
SYRIA	2	0.5%
TAJIKISTAN	1	0.3%
TOGO	2	0.5%
UGANDA	1	0.3%
UKRAINE	18	4.5%
OTHER COUNTRIES	39	9.8%
Total	398	100%

Other Programs

RCA Caseload by DSHS Region and CSO June 2012

Source: ESA-ACES Data

	Cases		Clients	
	Number	Percent	Number	Percent
Region 1				
Access Spokane 032	38	10.5%	46	11.6%
Clarkston CSO	0	0.0%	0	0.0%
Colfax CSO	1	0.3%	1	0.3%
Colville CSO	0	0.0%	0	0.0%
Ellensburg CSO	0	0.0%	0	0.0%
Goldendale CSO	0	0.0%	0	0.0%
Kennewick CSO	28	7.7%	28	7.0%
Mattawa CSO	0	0.0%	0	0.0%
Moses Lake CSO	0	0.0%	0	0.0%
Newport CSO	0	0.0%	0	0.0%
Okanogan CSO	0	0.0%	0	0.0%
Othello CSO	0	0.0%	0	0.0%
Pomeroy Outstation	0	0.0%	0	0.0%
R2 Processing Center	0	0.0%	0	0.0%
Republic CSO	0	0.0%	0	0.0%
Sunnyside CSO	0	0.0%	0	0.0%
Walla Walla CSO	0	0.0%	0	0.0%
Wapato CSO	0	0.0%	0	0.0%
Wenatchee CSO	0	0.0%	0	0.0%
White Salmon CSO	0	0.0%	0	0.0%
Yakima CSO	0	0.0%	0	0.0%
Region Total	67	18.5%	75	18.8%
Region 2				
Alderwood CSO	11	3.0%	11	2.8%
Auburn CSO	1	0.3%	2	0.5%
Bellingham CSO	0	0.0%	0	0.0%
Belltown CSO	7	1.9%	8	2.0%
Capitol Hill CSO	4	1.1%	4	1.0%
Everett CSO	18	5.0%	19	4.8%
Federal Way CSO	9	2.5%	12	3.0%
King Eastside CSO	18	5.0%	19	4.8%
King North CSO	19	5.2%	20	5.0%
King South CSO	44	12.1%	46	11.6%
Mt Vernon CSO	3	0.8%	6	1.5%
Oak Harbor CSO	0	0.0%	0	0.0%
Rainier CSO	17	4.7%	17	4.3%
Renton CSO	26	7.2%	27	6.8%
Sky Valley CSO	0	0.0%	0	0.0%
Smokey Point CSO	0	0.0%	0	0.0%
Walla Walla-Columbia	0	0.0%	0	0.0%
White Center CSO	92	25.3%	100	25.1%
Region Total	269	74.1%	291	73.1%

Other Programs

RCA Caseload by DSHS Region and CSO (continued)

June 2012

Source: ESA-ACES Data

	Cases		Clients	
	Number	Percent	Number	Percent
Region 3				
Aberdeen CSO	0	0.0%	0	0.0%
Bremerton CSO	0	0.0%	0	0.0%
Chehalis CSO	0	0.0%	0	0.0%
Columbia River CSO	11	3.0%	12	3.0%
Forks CSO	0	0.0%	0	0.0%
Friday Harbor Outstn	0	0.0%	0	0.0%
Kelso CSO	0	0.0%	0	0.0%
Lakewood CSO	5	1.4%	7	1.8%
Long Beach CSO	0	0.0%	0	0.0%
Olympia CSO	0	0.0%	0	0.0%
Pierce North CSO	2	0.6%	3	0.8%
Pierce South CSO	6	1.7%	7	1.8%
Port Angeles CSO	0	0.0%	0	0.0%
Port Townsend CSO	0	0.0%	0	0.0%
Puyallup Valley CSO	1	0.3%	1	0.3%
Shelton CSO	0	0.0%	0	0.0%
South Bend CSO	0	0.0%	0	0.0%
Stevenson CSO	0	0.0%	0	0.0%
Region Total	25	6.9%	30	7.5%
Statewide Customer Serv. Call Cntr				
Customer Svc Cntr	1	0.3%	1	0.3
Hq Cust Serv Center	0	0.0%	0	0.0%
Mobile Cso East	0	0.0%	0	0.0%
Mobile Cso West	0	0.0%	0	0.0%
Region Total	1	0.3%	1	0.3
State Total	363	100.0%	398	100.0%

Other Programs

RCA Caseload by County of Residence June 2012

Source: ESA-ACES Data

County	Cases		Clients	
	Number	Percent	Number	Percent
Adams	0	0.0%	0	0.0%
Asotin	0	0.0%	0	0.0%
Benton	24	6.6%	24	6.0%
Chelan	0	0.0%	0	0.0%
Clallam	0	0.0%	0	0.0%
Clark	11	3.0%	12	3.0%
Columbia	0	0.0%	0	0.0%
Cowlitz	0	0.0%	0	0.0%
Douglas	0	0.0%	0	0.0%
Ferry	0	0.0%	0	0.0%
Franklin	4	1.1%	4	1.0%
Garfield	0	0.0%	0	0.0%
Grant	0	0.0%	0	0.0%
Grays Harbor	0	0.0%	0	0.0%
Island	0	0.0%	0	0.0%
Jefferson	0	0.0%	0	0.0%
King	236	65.0%	254	63.8%
Kitsap	0	0.0%	0	0.0%
Kittitas	0	0.0%	0	0.0%
Klickitat	0	0.0%	0	0.0%
Lewis	0	0.0%	0	0.0%
Lincoln	0	0.0%	0	0.0%
Mason	0	0.0%	0	0.0%
Okanogan	0	0.0%	0	0.0%
Pacific	1	0.3%	1	0.3%
Pend Oreille	0	0.0%	0	0.0%
Pierce	15	4.1%	19	4.8%
San Juan	0	0.0%	0	0.0%
Skagit	3	0.8%	6	1.5%
Skamania	0	0.0%	0	0.0%
Snohomish	30	8.3%	31	7.8%
Spokane	38	10.5%	46	11.6%
Stevens	0	0.0%	0	0.0%
Thurston	1	0.3%	1	0.3%
Wahkiakum	0	0.0%	0	0.0%
Walla Walla	0	0.0%	0	0.0%
Whatcom	0	0.0%	0	0.0%
Whitman	0	0.0%	0	0.0%
Yakima	0	0.0%	0	0.0%
State Total	363	100.0%	398	100.0%

Other Programs

RCA Client Demographics June 2012

Source: ESA-ACES Data

Characteristic	All Clients/Adults	
	Number	Percent
TOTAL	398	100%
Gender		
Female	167	42.0%
Male	231	58.0%
Race		
White	46	11.6%
Hispanic	32	8.0%
Black	74	18.6%
Asian/Pacific Islander	44	11.1%
Unknown	202	50.8%
Marital Status (Adults Only)		
Separated	23	5.8%
Married	82	20.6%
Never Married	267	67.1%
Divorced	8	2.0%
Widowed	13	3.3%
Unknown	5	1.3%
Citizenship¹		
Resident Alien	398	100.0%
Age		
18 Years Old	12	3.0%
19 – 20 Years Old	49	12.3%
21 – 29 Years Old	157	39.4%
30 – 39 Years Old	75	18.8%
40 – 49 Years Old	23	5.8%
50 – 55 Years Old	23	5.8%
56 – 59 Years Old	17	4.3%
60 – 64 Years Old	18	4.5%
65 + Years Old	24	6.0%

Avg. Age of Clients/Adults 34.2 Years Old

¹ See Refugee/Immigrant section, page 28-29 for glossary of Citizenship terms.

Other Programs

Selected SSP Program Characteristics¹ SFY 2011 and SFY 2012

Source: ESA-ACES Data

	SFY 2011 (July 2010 – June 2011)	SFY 2012 (July 2011 – June 2012)
Average Number of Cases Per Month (Range)	33,237 (32,926 – 33,523)	34,075 (33,629 – 34,608)
Average Number of Persons Per Month (Range)	33,237 (32,926 – 33,523)	34,075 (33,629 – 34,608)
Recipients as a Percent of State's Total Population	Trace	0.5%
State Total Population²	6,767,900	6,817,770
Recipients as a Percent of State's Population Age 18 and Over	Trace	0.6%
State Population Age 18 and Over³	5,193,198	5,244,275
Average Persons Per Case	1	1
Average Monthly Payment Per Case (Range)⁴	\$47.23 (\$46 – 60.63)	\$46.01 (\$46 – 60.62)

¹ The Social Security Act requires the state of Washington to maintain a State Supplemental Program (SSP) because Washington operated a state-funded assistance program prior to the implementation of the federal Supplemental Security Income (SSI) program in 1974. Washington State is also required to tell the Social Security Administration (SSA) each year how the program will be managed through an annual State Plan agreement. Since the inception of SSP, Washington State has paid SSA to administer the program.

The 2002 Washington State Legislature redirected the funding for SSP effective July 1, 2002. Funding for SSP was divided between the Division of Developmental Disabilities (DDD) and the Economic Services Administration (ESA). ESA was given \$4.8 million of the \$28.9 million maintenance of effort (MOE) money to spend on SSI recipients who have an SSI ineligible spouse and grandfathered in SSI recipients, also called MIL clients.

SSA managed the reduced program July 1, 2002 through September 30, 2002. State administration of SSP began in October 2002.

Numbers reported here represent the number of cases managed by ESA. As of January 2004, ESA added approximately 25,000 aged and blind individuals to the SSP caseload, as part of the 2004 State Plan agreement with SSA.

² OFM, 2012 Population Trends for Washington State.

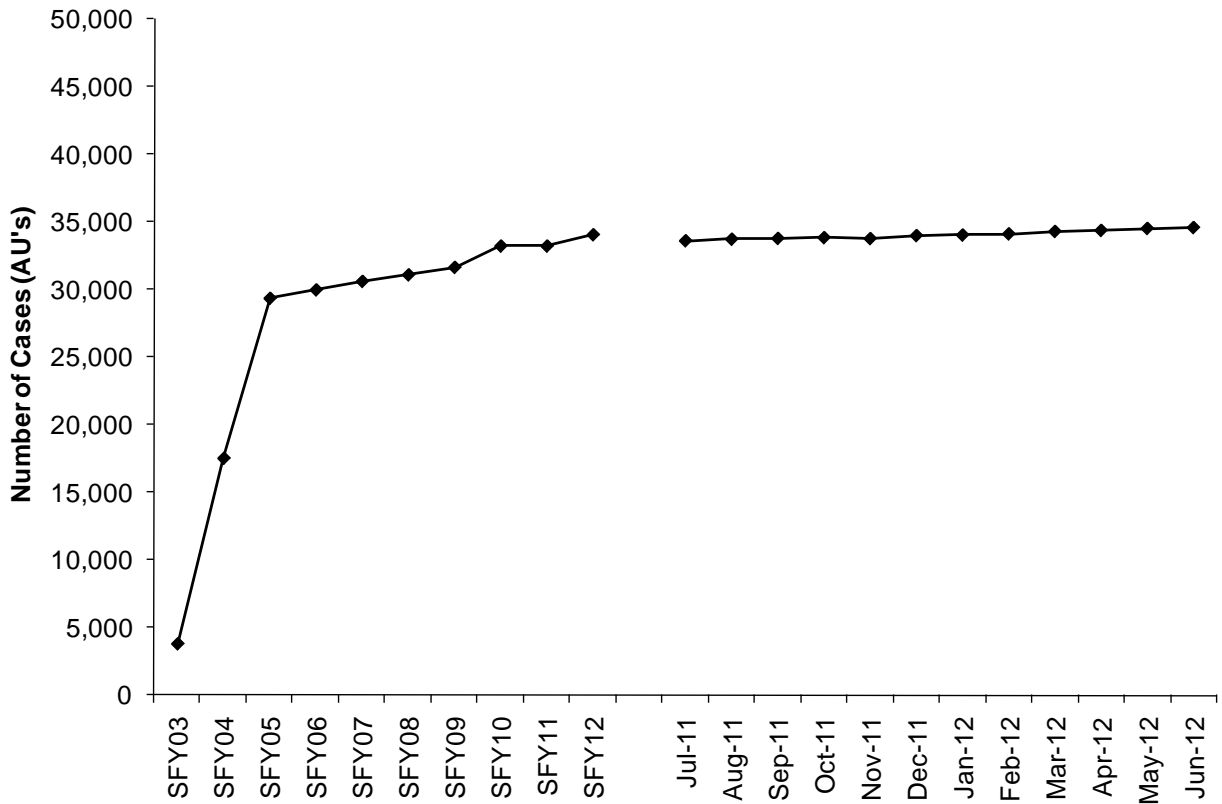
³ Ibid.

⁴ Payments are not adjusted for refunds.

Other Programs

SSP Caseload¹ SFY 2003 - SFY 2012

Source: ESA-ACES Data



SFY2012	Cases	Persons	Grant Expenditures	Avg. Payment Per Case
July	33,629	33,629	\$ 1,547,658.39	\$ 46.02
August	33,745	33,745	\$ 1,552,672.39	\$ 46.01
September	33,804	33,804	\$ 1,555,478.39	\$ 46.01
October	33,861	33,861	\$ 1,557,732.39	\$ 46.00
November	33,789	33,789	\$ 1,554,604.39	\$ 46.01
December	34,012	34,012	\$ 1,564,540.39	\$ 46.00
January	34,053	34,053	\$ 1,566,702.39	\$ 46.01
February	34,140	34,140	\$ 1,570,382.39	\$ 46.00
March	34,319	34,319	\$ 1,578,800.39	\$ 46.00
April	34,397	34,397	\$ 1,582,848.39	\$ 46.02
May	34,543	34,543	\$ 1,589,242.39	\$ 46.01
June	34,608	34,608	\$ 1,592,554.39	\$ 46.02
Mo. Avg.	34,075	34,075	\$ 1,567,768.06	\$ 46.01

¹ Please refer to note on page 39 for changes made to the SSP program. Washington State is required to expend the same amount of state supplemental monies each year. Adjustments to the SSP payment amount are made as needed to balance the SSP budget.

Other Programs

SSP Caseload by DSHS Region, CSO, and HCS Office June 2012

Source: ESA-ACES Data

	Cases		Clients	
	Number	Percent	Number	Percent
Region 1				
Access Spokane 032	784	2.3%	784	2.3%
Clarkston CSO	42	0.1%	42	0.1%
Colfax CSO	23	0.1%	23	0.1%
Colville CSO	85	0.2%	85	0.2%
Ellensburg CSO	31	0.1%	31	0.1%
Goldendale CSO	29	0.1%	29	0.1%
Kennewick CSO	357	1.0%	357	1.0%
Mattawa CSO	-	0.0%	-	0.0%
Moses Lake CSO	140	0.4%	140	0.4%
Newport CSO	25	0.1%	25	0.1%
Okanogan CSO	41	0.1%	41	0.1%
Othello CSO	115	0.3%	115	0.3%
Pomeroy Outstation	-	0.0%	-	0.0%
R2 Processing Center	-	0.0%	-	0.0%
Republic CSO	36	0.1%	36	0.1%
Sunnyside CSO	170	0.5%	170	0.5%
Walla Walla CSO	110	0.3%	110	0.3%
Wapato CSO	157	0.5%	157	0.5%
Wenatchee CSO	171	0.5%	171	0.5%
White Salmon CSO	14	0.0%	14	0.0%
Yakima CSO	314	0.9%	314	0.9%
Region Total	2,644	7.6%	2,644	7.6%
Region 2				
Alderwood CSO	469	1.4%	469	1.4%
Auburn CSO	47	0.1%	47	0.1%
Bellingham CSO	341	1.0%	341	1.0%
Belltown CSO	300	0.9%	300	0.9%
Capitol Hill CSO	340	1.0%	340	1.0%
Everett CSO	315	0.9%	315	0.9%
Federal Way CSO	390	1.1%	390	1.1%
King Eastside CSO	761	2.2%	761	2.2%
King North CSO	491	1.4%	491	1.4%
King South CSO	363	1.0%	363	1.0%
Mt Vernon CSO	190	0.5%	190	0.5%
Oak Harbor CSO	66	0.2%	66	0.2%
Rainier CSO	597	1.7%	597	1.7%
Renton CSO	381	1.1%	381	1.1%
Sky Valley CSO	89	0.3%	89	0.3%
Smokey Point CSO	173	0.5%	173	0.5%
White Center CSO	564	1.6%	564	1.6%
Region Total	5,877	17.0%	5,877	17.0%

Other Programs

SSP Caseload by DSHS Region, CSO, and HCS Office (continued) June 2012

Source: ESA-ACES Data

	Number	Cases Percent	Number	Clients Percent
Region 3				
Aberdeen CSO	145	0.4%	145	0.4%
Bremerton CSO	299	0.9%	299	0.9%
Chehalis CSO	139	0.4%	139	0.4%
Columbia River CSO	643	1.9%	643	1.9%
Forks CSO	23	0.1%	23	0.1%
Friday Harbor Outstn	-	0.0%	-	0.0%
Kelso CSO	182	0.5%	182	0.5%
Lakewood CSO	291	0.8%	291	0.8%
Long Beach CSO	33	0.1%	33	0.1%
Olympia CSO	321	0.9%	321	0.9%
Pierce North CSO	340	1.0%	340	1.0%
Pierce South CSO	415	1.2%	415	1.2%
Port Angeles CSO	77	0.2%	77	0.2%
Port Townsend CSO	25	0.1%	25	0.1%
Puyallup Valley CSO	262	0.8%	262	0.8%
Shelton CSO	81	0.2%	81	0.2%
South Bend CSO	19	0.1%	19	0.1%
Stevenson CSO	13	0.0%	13	0.0%
Region Total	3,308	9.6%	3,308	9.6%
Customer Svc Cntr	57	0.2%	57	0.2%
WASHCAP ¹	9,854	28.5%	9,854	28.5%
Medical Elig Det Svc	8	0.0%	8	0.0%

¹ The WASHCAP office is part of the Statewide Customer Service Call Center (CSC).

Other Programs

SSP Caseload by DSHS Region, CSO, and HCS Office¹ (continued)

June 2012

Source: ESA-ACES Data

	Cases		Clients	
	Number	Percent	Number	Percent
HCS Region 1				
Clarkston Hcs Office	41	0.1%	41	0.1%
Colville Hcs Office	86	0.2%	86	0.2%
Ellensburg Hcs	43	0.1%	43	0.1%
Moses Lk Hcs Office	147	0.4%	147	0.4%
Okanogan Hcs Office	55	0.2%	55	0.2%
Spokane Hcs Office	979	2.8%	979	2.8%
Sunnyside Hcs Office	58	0.2%	58	0.2%
Tri-Cities Hcs Ofc	344	1.0%	344	1.0%
Walla Walla Hcs Ofc	96	0.3%	96	0.3%
Wapato HCS	46	0.1%	46	0.1%
Wenatchee HCS Office	78	0.2%	78	0.2%
Yakima HCS Office	165	0.5%	165	0.5%
Region Total	2,138	6.2%	2,138	6.2%
HCS Region 2				
Alderwood HCS Office	380	1.1%	380	1.1%
Bellingham HCS Ofc	241	0.7%	241	0.7%
Everett HCS Office	604	1.7%	604	1.7%
Holgate HCS Office	5,633	16.3%	5,633	16.3%
Mt Vernon HCS Office	104	0.3%	104	0.3%
Oak Harbor HCS	33	0.1%	33	0.1%
Skykomish HCS Office	161	0.5%	161	0.5%
Smokey Point HCS	95	0.3%	95	0.3%
Region Total	7,251	21.0%	7,251	21.0%
HCS Region 3				
Aberdeen HCS Office	66	0.2%	66	0.2%
Bremerton HCS Office	192	0.6%	192	0.6%
Chehalis HCS Office	62	0.2%	62	0.2%
Kelso HCS Office	81	0.2%	81	0.2%
Olympia HCS Office	287	0.8%	287	0.8%
Pacific County HCS	59	0.2%	59	0.2%
Port Angeles HCS	93	0.3%	93	0.3%
Tacoma HCS Office	1,488	4.3%	1,488	4.3%
Vancouver HCS	1,143	3.3%	1,143	3.3%
Region Total	3,471	10.0%	3,471	10.0%
State Total	34,608	100.0%	34,608	100.0%

¹ A number of SSP cases received services through a Home Community Service Center (HCS) administered through the Aging and Adult Services Administration. These cases are listed separately since they are not part of a Community Services Division (CSD) Community Service Office (CSO).

Other Programs

SSP Caseload by County of Residence June 2012

Source: ESA-ACES Data

County	Cases		Clients	
	Number	Percent	Number	Percent
Adams	74	0.2%	74	0.2%
Asotin	110	0.3%	110	0.3%
Benton	589	1.7%	589	1.7%
Chelan	317	0.9%	317	0.9%
Clallam	282	0.8%	282	0.8%
Clark	2,190	6.3%	2,190	6.3%
Columbia	20	0.1%	20	0.1%
Cowlitz	444	1.3%	444	1.3%
Douglas	107	0.3%	107	0.3%
Ferry	44	0.1%	44	0.1%
Franklin	334	1.0%	334	1.0%
Garfield	5	0.0%	5	0.0%
Grant	373	1.1%	373	1.1%
Grays Harbor	390	1.1%	390	1.1%
Island	158	0.5%	158	0.5%
Jefferson	103	0.3%	103	0.3%
King	13,461	38.9%	13,461	38.9%
Kitsap	739	2.1%	739	2.1%
Kittitas	74	0.2%	74	0.2%
Klickitat	102	0.3%	102	0.3%
Lewis	315	0.9%	315	0.9%
Lincoln	31	0.1%	31	0.1%
Mason	213	0.6%	213	0.6%
Okanogan	242	0.7%	242	0.7%
Pacific	131	0.4%	131	0.4%
Pend Oreille	92	0.3%	92	0.3%
Pierce	3,898	11.3%	3,898	11.3%
San Juan	24	0.1%	24	0.1%
Skagit	446	1.3%	446	1.3%
Skamania	36	0.1%	36	0.1%
Snohomish	3,164	9.1%	3,164	9.1%
Spokane	2,299	6.6%	2,299	6.6%
Stevens	235	0.7%	235	0.7%
Thurston	878	2.5%	878	2.5%
Wahkiakum	9	0.0%	9	0.0%
Walla Walla	277	0.8%	277	0.8%
Whatcom	873	2.5%	873	2.5%
Whitman	73	0.2%	73	0.2%
Yakima	1,456	4.2%	1,456	4.2%
State Total	34,608	100.0%	34,608	100.0%

Other Programs

SSP Client Demographics

June 2012

Source: ESA-ACES Data

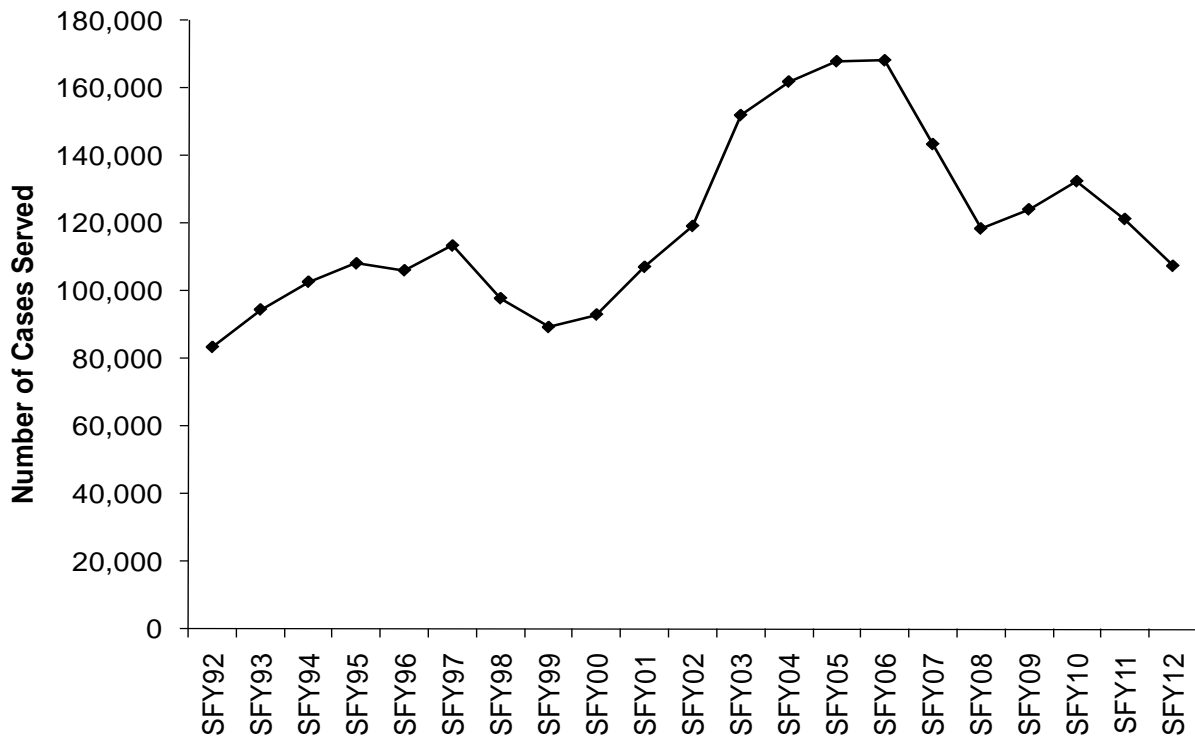
Characteristic	All Clients	
	Number	Percent
TOTAL	34,608	100.0%
Gender		
Female	22,380	64.7%
Male	12,228	35.3%
Race		
White	15,955	46.1%
Hispanic	2,755	8.0%
Black	1,550	4.5%
Asian/Pacific Islander	8,511	24.6%
Native American	638	1.8%
Unknown	5,199	15.0%
Marital Status (Adults Only)		
Separated	2,684	7.8%
Married	11,698	33.8%
Never Married	6,454	18.6%
Divorced	5,528	16.0%
Widow	7,112	20.6%
Unknown	1,132	3.3%
Citizenship¹		
U.S. Citizen	26,803	77.4%
Resident Alien	7,696	22.2%
U.S. National	109	0.3%
Age		
<1 Year Old	1	0.0%
1 – 5 Years Old	16	0.0%
6 – 10 Years Old	12	0.0%
11 – 15 Years Old	24	0.1%
16 – 17 Years Old	10	0.0%
18 – 20 Years Old	55	0.2%
21 – 29 Years Old	328	0.9%
30 – 39 Years Old	587	1.7%
40 – 49 Years Old	707	2.0%
50 – 55 Years Old	691	2.0%
56 – 59 Years Old	521	1.5%
60 – 64 Years Old	648	1.9%
65+ Years Old	31,008	89.6%
Avg. Age of Adults	72.2 Year of Age	
Avg. Age of Children	10.1 Year of Age	

¹ See Refugee/Immigrant section, page 28-29 for glossary of Citizenship terms.

Other Programs

WTAP Caseload SFY 1992 to SFY 2012¹

Source: Information System Services Division (ISSD)



SFY	Cases Served
1992	83,509
1993	94,577
1994	102,765
1995	108,193
1996	106,145
1997	113,450
1998	97,888
1999	89,384
2000	93,078
2001	107,159
2002	119,238
2003	151,972
2004	161,884
2005	167,884
2006	168,164
2007	143,419
2008	118,486
2009	124,146
2010	132,450
2011	121,295
2012	107,455

¹ Due to an increasing number of individuals turning to cell phones for primary services, the number of cases participating in WTAP declined in SFY 2012.

Other Programs

WTAP Caseload By County of Residence¹ SFY 2012

Source: Information System Services Division (ISSD)

County	Number of Cases Participating	Number of Cases Eligible	Percent ² Participating
Adams	331	1,790	21.90%
Asotin	477	3,908	16.00%
Benton	2,256	24,853	12.35%
Chelan	1,330	12,166	12.49%
Clallam	1,254	8,792	17.39%
Clark	5,741	53,394	12.62%
Columbia	0	2	0.00%
Cowlitz	2,190	17,390	15.10%
Ferry	277	1,684	23.15%
Franklin	456	1,735	0.00%
Garfield	3	16	0.00%
Grant	1,561	12,431	15.78%
Grays Harbor	1,264	11,684	13.99%
Island	397	4,963	9.03%
Jefferson	452	3,560	19.29%
King	23,474	200,627	14.45%
Kitsap	2,561	24,750	13.11%
Kittitas	215	4,651	4.90%
Klickitat	97	2,668	10.65%
Lewis	1,896	12,593	17.34%
Mason	879	7,712	16.20%
Okanogan	1,163	6,749	19.42%
Pacific	419	3,575	14.06%
Pend Oreille	256	1,611	21.05%
Pierce	10,099	110,296	11.81%
Skagit	1,649	17,085	11.57%
Skamania	23	1,080	2.29%
Snohomish	6,502	79,579	10.20%
Spokane	10,063	78,515	15.66%
Stevens	1,560	6,112	27.38%
Thurston	19,433	97,259	12.77%
Walla Walla	926	7,411	15.46%
Whatcom	2,538	24,097	13.40%
Whitman	202	2,601	10.74%
Yakima	4,592	49,821	12.74%
Unknown	919	36,629	2.51%
State Total	107,455	933,789	11.51%

¹ Data is not available for Douglas, Lincoln, San Juan and Wahkiakum counties because the CSOs in those counties were closed.

² Percent is calculated as the number participating divided by the number eligible within each county.