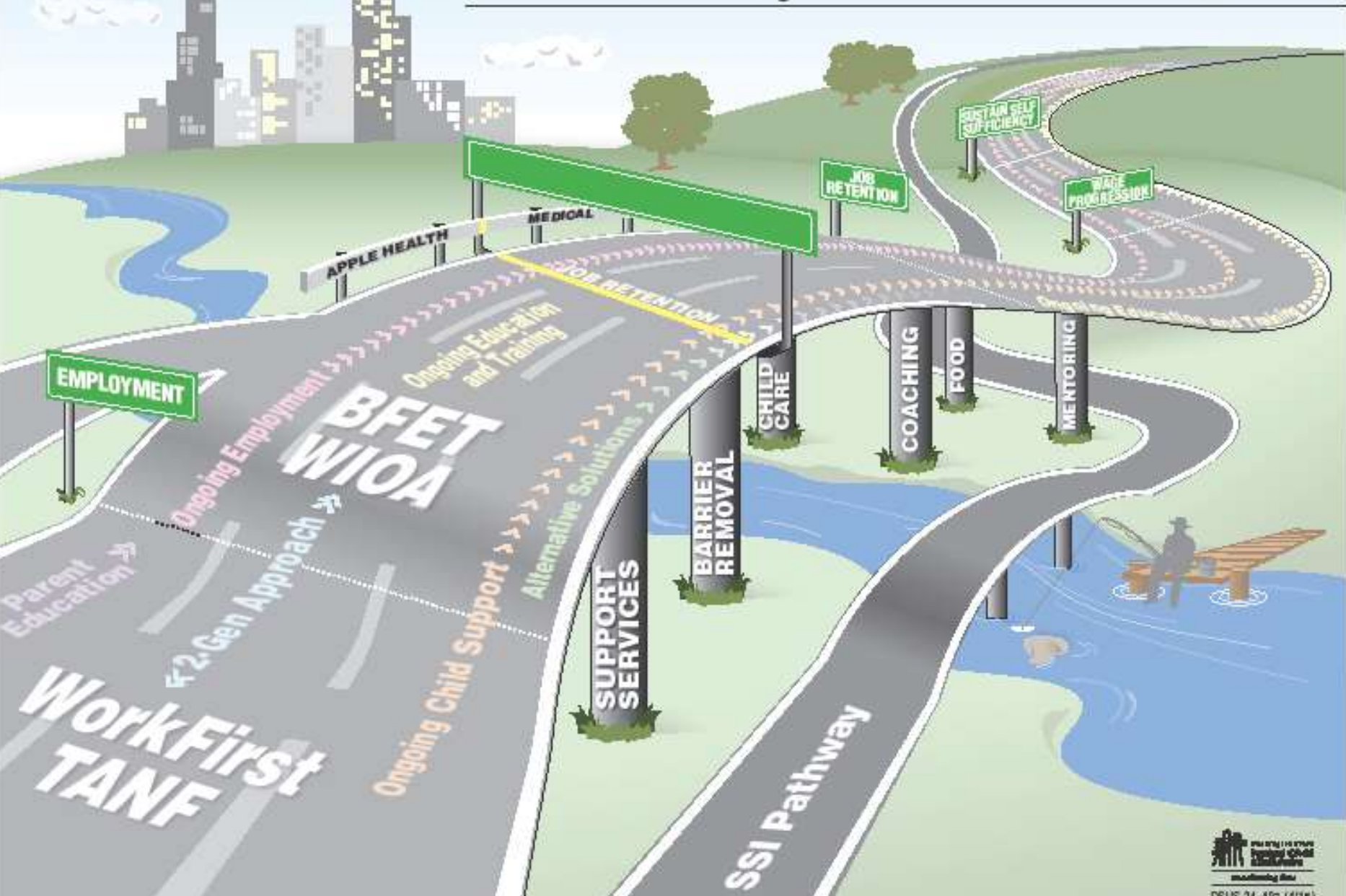


BFET AND TANF WORKING TOGETHER



Self-Sufficiency Model



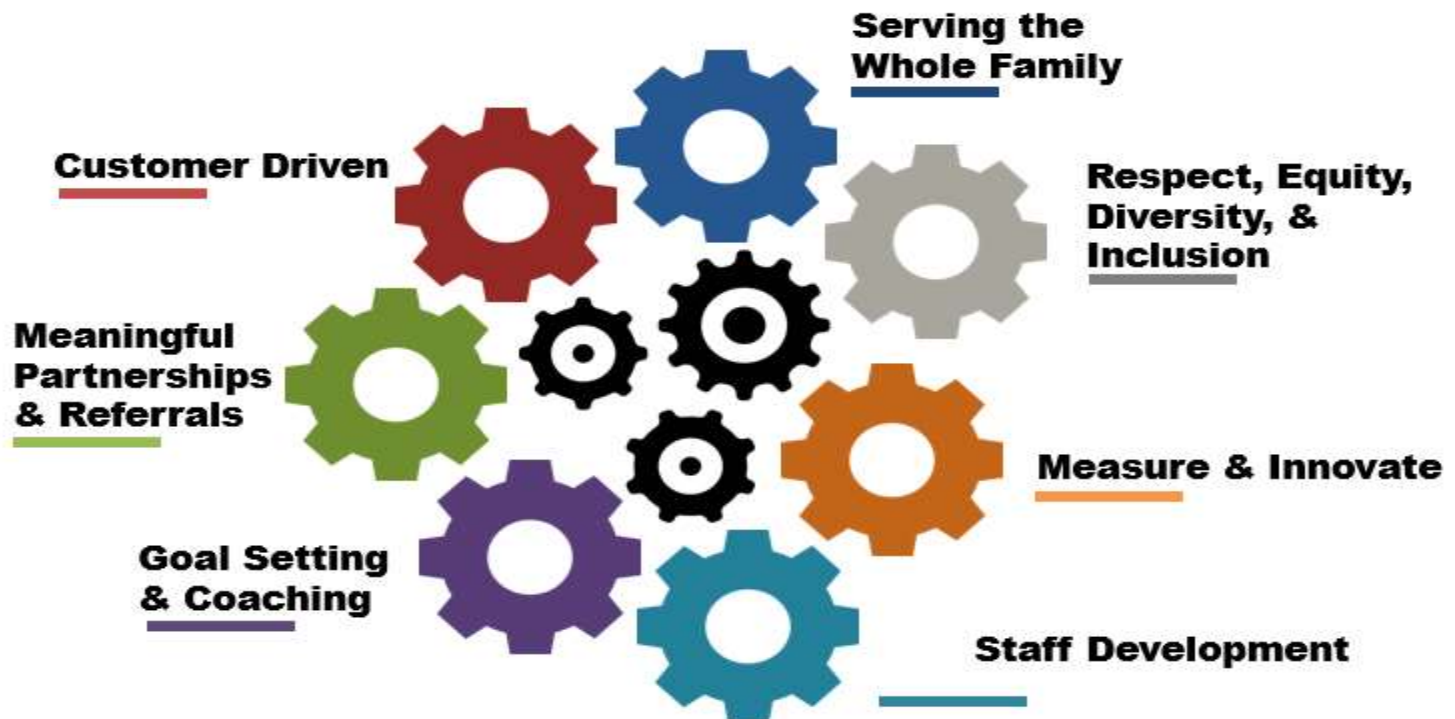
What is Transforming Case management?

- Multi-year, cross-functional project.
- Goal is to build effective, standardized case management practices
- Implement the “Super Highway to Self-Sufficiency
- Evaluate learnings from:
 - Systems to Family Stability Policy Academy pilots
 - Other initiatives and research related to poverty and mitigation strategies and brain sciences
 - Road shows
 - Focus Groups
- Workgroups
- Recommendations



What is Transforming Case management?

Values of Transforming Case Management



What is TANF?

- *Temporary* Assistance for Needy Families (60 month time limit)
- Monthly grant assistance to families or caregivers with children
- Requires engagement in WorkFirst activities - goal of economic independence
- Support services
- Individualized Responsibility Plans-IRP
- Childcare assistance
- Case management - Barrier removal/resolution
- Uses eJAS
- Up front assessment (Comprehensive Evaluation)
- Up front orientation



What is new with TANF?

- The 12 month vocational training maximum for TANF was increased to 24 months.
- The TANF grant is increasing by 9.3% on 7/1/2018
- The cash resource limits are increasing to 6,000.00 on 2/1/2019
- Means testing for child-only TANF cases was been repealed as of 7/1/2018.



TANF and BFET similarities

- Assist recipients in obtaining a living wage leading towards self sufficiency
- Managed by DSHS
- Strong partnerships with colleges and community based organizations
- Provide education and job search options
- Support services
- Individualized activity plans-IRP, IEP
- Activities that may qualify for childcare assistance
- Both programs meet the work requirements for students
- Use the eJas system
- Case managed
- Up front assessment



TANF and BFET differences



TANF	BFET
Mandatory work readiness activities	Voluntary work readiness activities
Time limited Vocational Education (24 months) and overall TANF time limit (60 months)	No time limits
Child support goes to the state	Child support goes to the client
Funded by Health and Human Services	Funded by Food and Nutrition Services
Offers a monthly grant to cover basic needs	No monthly assistance grant
Must be pregnant or minor dependent child	Must be over 16 years old
No retention services	Retention services
Able to work is not an eligibility requirement	Must be able to work 20+ hours per week
Required to collect actual hours or participation	Collected but not recorded in "actual hours field." Participation is tracked through eJAS client notes.
Earned income limit family of 3: \$1,042	Earned income limit for family of 3: \$3,403

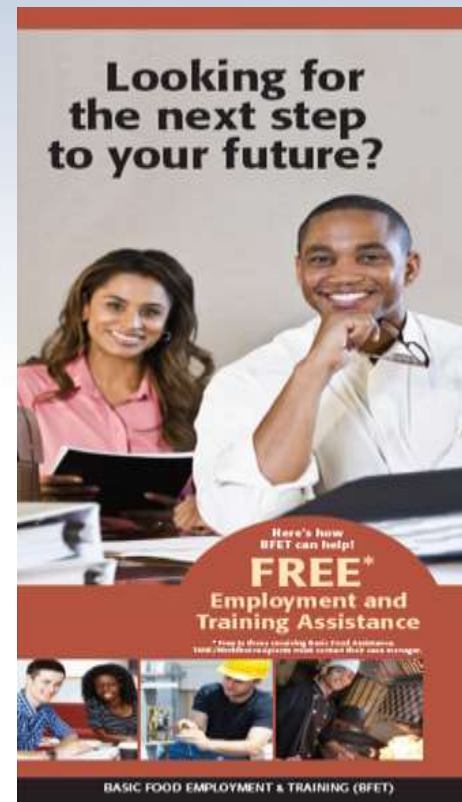
Why might families transition off TANF who are not yet self sufficient?

- Entry level employment- part time employment
- Sanction
- 60 month time limit
- Child Support



BFET can be a better option than TANF for some families

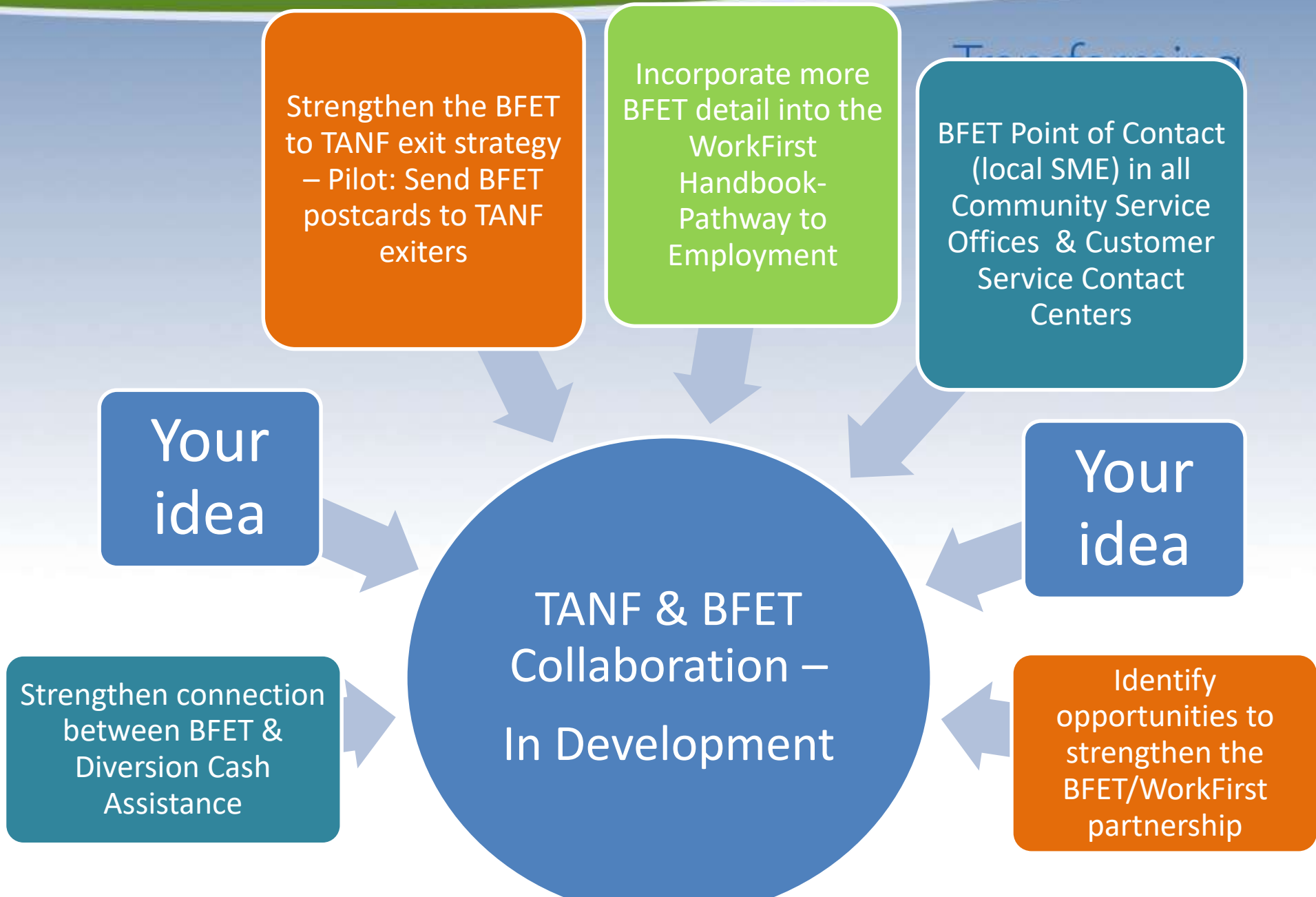
- Positive prevention
- Transitioning off TANF
- Career pathway
- Updated Workfirst orientation and manual
- Reverse referrals
- Diversion



What is Diversion Cash Assistance (DCA)

A cash assistance program that BFET participants may be eligible for!!

- Up to \$1,250 annually to help families access emergency assistance for housing, utilities, transportation, and employment related costs
- Must meet TANF eligibility, but not be on TANF





Sarah Garcia
TANF/WorkFirst Program Manager
360-725-4949 or 360-522-2214
Roddisl@dshs.wa.gov