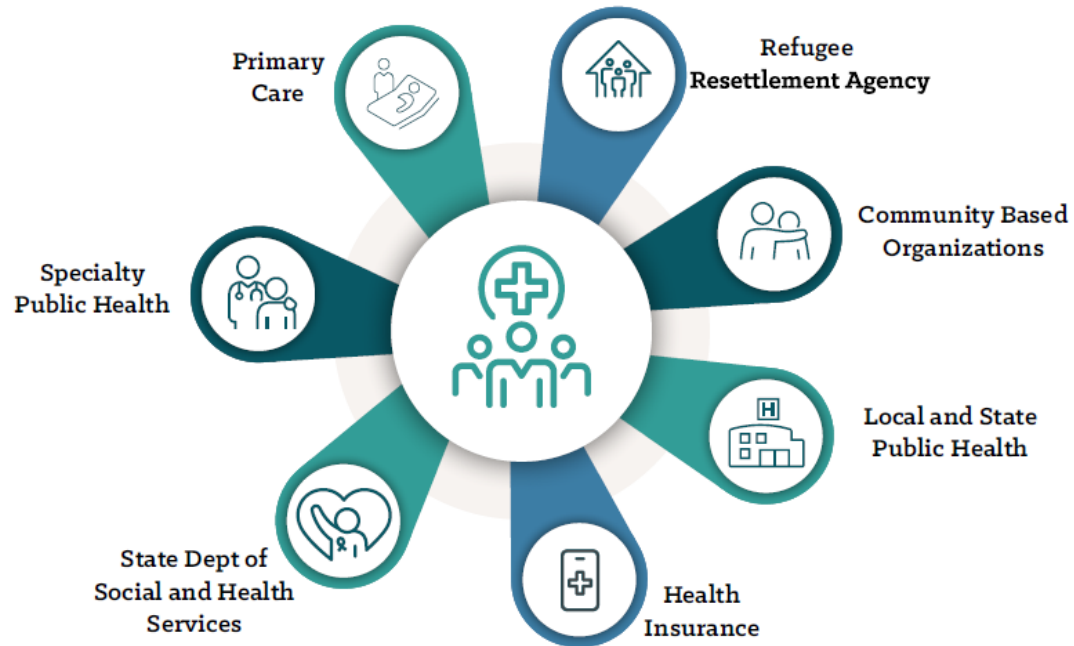




REFUGEE AND IMMIGRANT HEALTH PROGRAM  
Washington State Department of Health

# Refugee and Immigrant Health Program

---



# Operation Allies Welcome – COVID-19 Testing

---

- All new arrivals into U.S. airports receive COVID-19 testing
- At U.S. bases - serial COVID-19 testing performed, consistent with CDC recommendations
- Any person who tests positive will be isolated, and contacts will be quarantined per CDC guidelines.

# Operation Allies Welcome – Medical Examinations and Vaccinations

---

- Special Immigrant Visa and SI/SQ:
  - Immigration medical examination per CDC Technical Instructions for Civil Surgeons
- Humanitarian parolee:
  - Vaccinations per CDC Vaccination Technical Instructions for Civil Surgeons
    - Measles, mumps and rubella (MMR)
    - Inactivated polio virus vaccine (IPV)
  - COVID-19 vaccination
  - Tuberculosis screening per Technical Instructions for Civil Surgeons

# Health Milestones – Washington State

Special  
Immigrant  
Visa (SIV)



Resettlement

Health  
Insurance

Refugee Health  
Screening

Primary Care

Special  
Immigrant  
Parolee  
(SI/SQ)

Humanitarian  
Parolee



Resettlement

Health  
Insurance, if  
eligible

Primary Care

# Resources for more information

---

- Operation Allies Refuge, including information on COVID-19 testing, vaccinations and other medical services  
[https://www.dhs.gov/sites/default/files/publications/21\\_0903\\_oaw-fact-sheet\\_508.pdf](https://www.dhs.gov/sites/default/files/publications/21_0903_oaw-fact-sheet_508.pdf)
- CDC Welcome Booklet – Information about COVID-19  
[https://www.cdc.gov/coronavirus/2019-ncov/downloads/Welcome-booklet-for-refugees\\_english-p.pdf](https://www.cdc.gov/coronavirus/2019-ncov/downloads/Welcome-booklet-for-refugees_english-p.pdf)
- CDC Vaccination Technical Instructions for Civil Surgeons  
<https://www.cdc.gov/immigrantrefugeehealth/pdf/Vaccine-TI-Civil-Surgeons-H.pdf>
- Washington State Department of Health  
<http://www.doh.wa.gov/>



Jasmine Matheson, MPH  
Refugee Health Program  
Washington State Department of Health  
206-418-5500  
[jasmine.matheson@doh.wa.gov](mailto:jasmine.matheson@doh.wa.gov)

[www.doh.wa.gov/RefugeeHealth](http://www.doh.wa.gov/RefugeeHealth)



handle: WADeptHealth

