

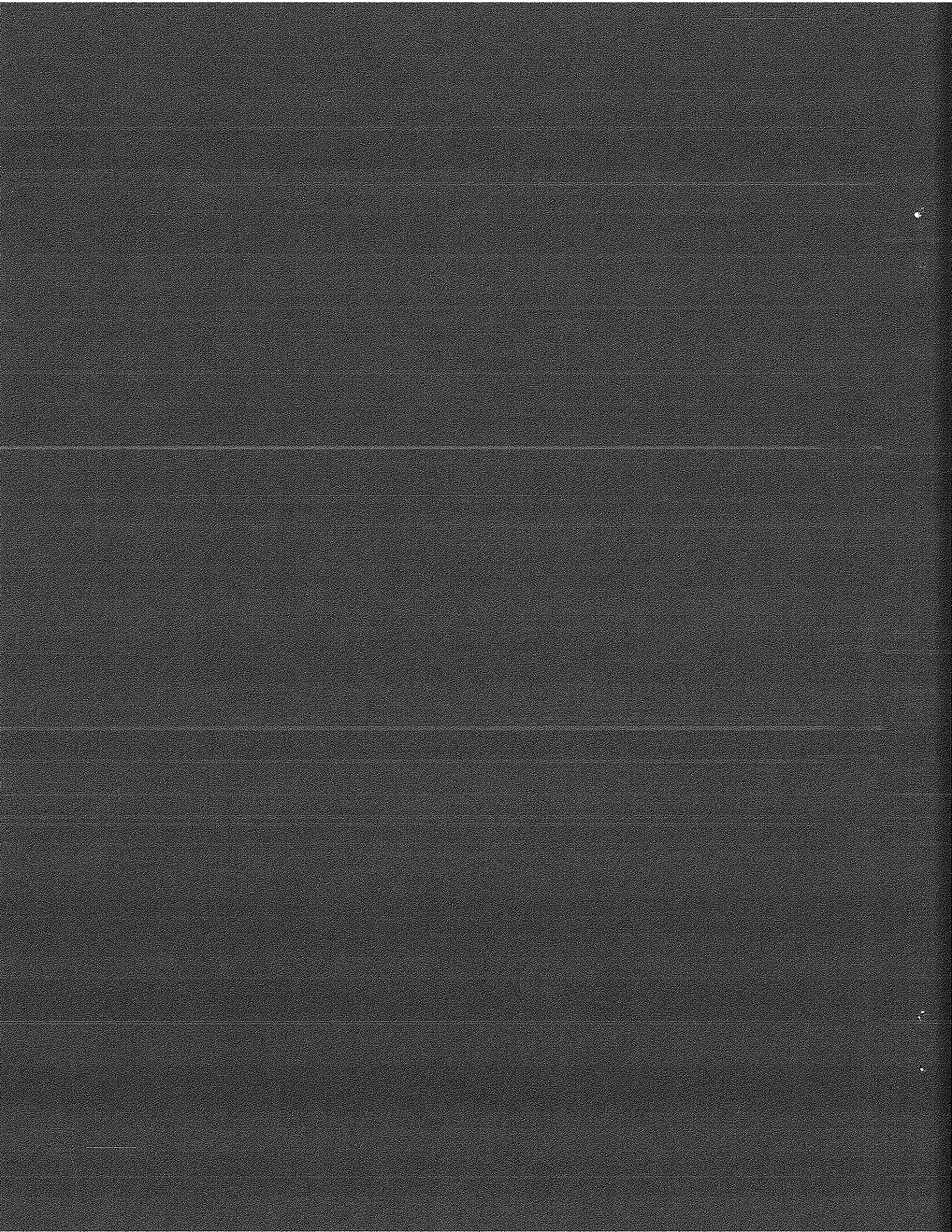
Study Guide for

# Screening Languages Medical Interpreters

By  
Washington State Department of Social and Health Services (DSHS)  
Language Testing and Certification (LTC)



Copyright © 2003 by Washington State DSHS Language Testing and Certification. All rights reserved.  
No reproduction of these materials, in any manner whatsoever, may be allowed without written permission.



## **Table of Contents**

### **Written Test Answer Sheet**

<b>Sample Written Questions .....</b>	<b>1</b>
<b>Keys to Sample Written Questions .....</b>	<b>6</b>
<b>Sample Oral Exercises .....</b>	<b>7</b>
<b>Medical Terminologies .....</b>	<b>10</b>
<b>Code of Professional Conduct .....</b>	<b>20</b>



FEED THIS DIRECTION

NAME: Last, First		Social Security Number	
Test Name and Booklet Number		Date	Test Site

SCANTRON FORM NO. 25909-DSHS

©SCANTRON CORPORATION 1990  
ALL RIGHTS RESERVED. (U.S. PAT. NOS. 3,800,439 & 3,900,961)

P3 1801 222-54321 To Reorder 1-800-722-6876


SER. NUM	SCORE					SER. NUM	SCORE					SER. NUM	SCORE				
	1	2	3	4	5		1	2	3	4	5		1	2	3	4	5
1	A	B	C	D	E	51	A	B	C	D	E	101	A	B	C	D	E
2	A	B	C	D	E	52	A	B	C	D	E	102	A	B	C	D	E
3	A	B	C	D	E	53	A	B	C	D	E	103	A	B	C	D	E
4	A	B	C	D	E	54	A	B	C	D	E	104	A	B	C	D	E
5	A	B	C	D	E	55	A	B	C	D	E	105	A	B	C	D	E
6	A	B	C	D	E	56	A	B	C	D	E	106	A	B	C	D	E
7	A	B	C	D	E	57	A	B	C	D	E	107	A	B	C	D	E
8	A	B	C	D	E	58	A	B	C	D	E	108	A	B	C	D	E
9	A	B	C	D	E	59	A	B	C	D	E	109	A	B	C	D	E
10	A	B	C	D	E	60	A	B	C	D	E	110	A	B	C	D	E
11	A	B	C	D	E	61	A	B	C	D	E	111	A	B	C	D	E
12	A	B	C	D	E	62	A	B	C	D	E	112	A	B	C	D	E
13	A	B	C	D	E	63	A	B	C	D	E	113	A	B	C	D	E
14	A	B	C	D	E	64	A	B	C	D	E	114	A	B	C	D	E
15	A	B	C	D	E	65	A	B	C	D	E	115	A	B	C	D	E
16	A	B	C	D	E	66	A	B	C	D	E	116	A	B	C	D	E
17	A	B	C	D	E	67	A	B	C	D	E	117	A	B	C	D	E
18	A	B	C	D	E	68	A	B	C	D	E	118	A	B	C	D	E
19	A	B	C	D	E	69	A	B	C	D	E	119	A	B	C	D	E
20	A	B	C	D	E	70	A	B	C	D	E	120	A	B	C	D	E
21	A	B	C	D	E	71	A	B	C	D	E	121	A	B	C	D	E
22	A	B	C	D	E	72	A	B	C	D	E	122	A	B	C	D	E
23	A	B	C	D	E	73	A	B	C	D	E	123	A	B	C	D	E
24	A	B	C	D	E	74	A	B	C	D	E	124	A	B	C	D	E
25	A	B	C	D	E	75	A	B	C	D	E	125	A	B	C	D	E
26	A	B	C	D	E	76	A	B	C	D	E	126	A	B	C	D	E
27	A	B	C	D	E	77	A	B	C	D	E	127	A	B	C	D	E
28	A	B	C	D	E	78	A	B	C	D	E	128	A	B	C	D	E
29	A	B	C	D	E	79	A	B	C	D	E	129	A	B	C	D	E
30	A	B	C	D	E	80	A	B	C	D	E	130	A	B	C	D	E
31	A	B	C	D	E	81	A	B	C	D	E	131	A	B	C	D	E
32	A	B	C	D	E	82	A	B	C	D	E	132	A	B	C	D	E
33	A	B	C	D	E	83	A	B	C	D	E	133	A	B	C	D	E
34	A	B	C	D	E	84	A	B	C	D	E	134	A	B	C	D	E
35	A	B	C	D	E	85	A	B	C	D	E	135	A	B	C	D	E
36	A	B	C	D	E	86	A	B	C	D	E	136	A	B	C	D	E
37	A	B	C	D	E	87	A	B	C	D	E	137	A	B	C	D	E
38	A	B	C	D	E	88	A	B	C	D	E	138	A	B	C	D	E
39	A	B	C	D	E	89	A	B	C	D	E	139	A	B	C	D	E
40	A	B	C	D	E	90	A	B	C	D	E	140	A	B	C	D	E
41	A	B	C	D	E	91	A	B	C	D	E	141	A	B	C	D	E
42	A	B	C	D	E	92	A	B	C	D	E	142	A	B	C	D	E
43	A	B	C	D	E	93	A	B	C	D	E	143	A	B	C	D	E
44	A	B	C	D	E	94	A	B	C	D	E	144	A	B	C	D	E
45	A	B	C	D	E	95	A	B	C	D	E	145	A	B	C	D	E
46	A	B	C	D	E	96	A	B	C	D	E	146	A	B	C	D	E
47	A	B	C	D	E	97	A	B	C	D	E	147	A	B	C	D	E
48	A	B	C	D	E	98	A	B	C	D	E	148	A	B	C	D	E
49	A	B	C	D	E	99	A	B	C	D	E	149	A	B	C	D	E
50	A	B	C	D	E	100	A	B	C	D	E	150	A	B	C	D	E

**State of Washington**  
**Department of Social and Health Services**  
**Language Interpreter Services and Translations (LIST)**

**INSTRUCTIONS:**

It is essential that you follow the instructions below to ensure proper scoring. You may not get credit for your correct answer if you fail to follow these instructions.

Be sure that the answer you mark on your answer sheet corresponds with the number of the test question in the test booklet. Fill in all the space between the lines using a #2 pencil. Your answer marks should look like this:

      ◻B◻      ◻C◻      ◻D◻      ◻E◻

**MAKE DARK, CLEAR MARKS !**

Mark only one answer for each question. If you change an answer, erase the old answer completely. If you don't erase completely, the computer might read both of the answers you marked. When two answers for one question are marked, the answer will be scored as incorrect.



## Test of Medical Terminologies

### **Directions:**

*For each item in this section, select one option from among the 4 choices (A, B, C, and D) that is the best match with the description in that item. Then, on your answer sheet, find the number of that item and completely blacken the box with the letter corresponding to your choice.*

4. A cavity within a bone, in particular one of the mucous membrane-lined, air-filled spaces in the bones surrounding the nose
- |                |             |
|----------------|-------------|
| A. Bone marrow | C. Nostrils |
| B. Crack       | D. Sinus    |
5. The portion of the trunk between the ribs and the pelvis of a human body
- |             |          |
|-------------|----------|
| A. Genitals | C. Spine |
| B. Neck     | D. Waist |
6. A discolored area under the skin, caused by leakage of blood after an injury
- |             |         |
|-------------|---------|
| A. Bleeding | C. Cut  |
| B. Bruise   | D. Pain |
7. A life-threatening condition in which overexposure to extreme heat and a consequent breakdown of the body's heat-regulating mechanisms cause the body to become overheated to a dangerous degree
- |                |                     |
|----------------|---------------------|
| A. Heat pump   | C. High fever       |
| B. Heat stroke | D. High temperature |
8. Painful spasm in a muscle caused by excessive and prolonged contraction of the muscle fibers
- |          |          |
|----------|----------|
| A. Cramp | C. Pull  |
| B. Poke  | D. Twist |



9. A metabolic disorder that causes attacks of arthritis, usually in a single joint
- |           |           |
|-----------|-----------|
| A. Goiter | C. Mumps  |
| B. Gout   | D. Myopia |
10. Burn with hot liquid or steam
- |            |          |
|------------|----------|
| A. Scab    | C. Scald |
| B. Scabies | D. Scalp |
11. Rubbing and kneading areas of the body, usually using the hands
- |                |            |
|----------------|------------|
| A. Acupressure | C. Massage |
| B. Embrace     | D. Strike  |
12. Various parts of different plants used to treat symptoms and promote health
- |            |               |
|------------|---------------|
| A. Herbage | C. Vegetables |
| B. Herbs   | D. Vegetation |
13. A physician who treats disease, injury, and deformity by operation or manipulation
- |                 |            |
|-----------------|------------|
| A. Chiropractor | C. Midwife |
| B. Internist    | D. Surgeon |
14. The science and study of the foodstuffs people eat and drink and the ways they are digested and assimilated.
- |              |            |
|--------------|------------|
| A. Cheese    | C. Protein |
| B. Nutrition | D. Vitamin |

## **Test of Clinical/Medical Procedures**

### **Directions:**

***In this section, choose one option from among the choices (A, B, C, D) that best describes the clinical/medical term that is called for in that item. Then, on your answer sheet, find the number of the item and completely blacken the box with the letter corresponding to your choice.***

15. Surgery
- A. The practice of cutting open a human body for the purpose of finding out the cause of death
  - B. The practice of treating diseases, injuries, or deformities by manual operation or instrumental appliances
  - C. The practice of treating diseases, injuries, or deformities by prescribing the appropriate medicine
  - D. The practice of using manual operation or instrumental appliances by people with diseases, injuries, or deformities
16. Abortion
- A. The expulsion of a human fetus, usually within 12 weeks of pregnancy, before it is viable
  - B. The inception of a human being, usually within 12 weeks of pregnancy, when it is viable
  - C. The operation performed on a woman, usually upon her request, to prevent unwanted pregnancy
  - D. The operation to deliver a baby, usually within a certain number of hours, when the mother has difficulty during labor
17. Local anesthetization
- A. Analysis of health care organizations operating in the neighborhood
  - C. Application of a drug or agent by a doctor from the local community
  - C. Elimination of pain by applying a drug or agent in the local hospital
  - D. Elimination of pain from part of the body by applying a drug or agent

**Test (indirect) of Writing Skills in the English Language**

**Directions:**

***For each of the questions in this section, choose one option from A, B, C, and D to best complete each sentence. Then, on your answer sheet, find the number of the question and completely blacken the box with the letter corresponding to your choice.***

18. Although this is a fatal disease, ... .
- A. chance of survival can be easily detected as early as possible
  - B. early detection can greatly increase the chance of survival
  - C. early detection of chance of survival
  - D. greatly increase the chance of detection
19. ..., you should call your doctor right away.
- A. As long as you are feeling that a sensation is aching your chest
  - B. By the time your sensation is feeling aching in the chest
  - C. Whenever you feel that you have an aching sensation in your chest
  - D. When you were feeling an aching sensation in your chest
20. Exercise should be undertaken ... to allow the body to prepare for the next level of activity.
- A. freely
  - B. gradually
  - C. healthy
  - D. lengthy

**Keys to Sample Questions**

***(Do not consult these keys until you have finished answering all the questions in the previous pages)***

1. B
2. A
3. A
4. D
5. D
6. B
7. B
8. A
9. B
10. C
11. C
12. B
13. D
14. B
15. B
16. A
17. D
18. B
19. C
20. B

## **Oral Test for Screening Languages Interpreters: Sample Exercises (Medical Interpreters)**

***To practise on the following materials, you will need a cassette recorder and a blank tape to record and play back your own voice. Please follow the directions for each portion of the sample exercises and use your recorder and blank tape as directed.***

### **Sight Translation Exercise**

#### **Directions:**

*Please orally translate the following sentences into your target language. You may look over each sentence silently before you begin translating. Make sure you read the number of each sentence in English before you translate it into your target language. When you are ready to proceed, insert your blank tape into your recorder, and simultaneously press both the "play" and "record" buttons on your recorder to record your own voice as you orally translate each sentence into your target language.*

1. The flu is a disease with potentially severe consequences.
2. Your blood test results should be available by next Monday.
3. Each time you take an antibiotic, you kill bacteria in your blood.
4. If you are not sure about whether you have any heart disease risk factors, talk to your physician.
5. For nausea and vomiting caused by cancer chemotherapy, hypnosis is often very helpful.
6. Most chronic headaches are the result of muscular tension. You may feel the pain in the front of your head, but it is really coming from tight muscles in your neck and shoulders.

*Turn off your recorder when you finish translating the last sentence. Eject the tape, set it aside, and go on to the next page for memory retention exercise.*

## **Memory Retention Exercise**

### **Directions:**

*You are going to listen to six pre-recorded sample English sentences for this exercise. You need to listen to each sentence and **repeat it in English**. The recording has built-in pauses between the sentences. The pause after each sentence is your time to repeat that sentence. There is a “beep” after each sentence. Once you hear the “beep”, you may start repeating that sentence. Since this is a memory retention test, **do not** take notes. Instead, listen carefully to each sentence, try to memorize it, and repeat it as it is (in English) in the recording.*

*When you are ready for this exercise, click on the link of Audio Practice Sample under Medical Pre-test Study Package for Screened Languages on the LTC homepage to listen to and repeat each sentence.*

***(Do not go on to back interpretation exercise until you finish the memory retention exercise.)***

*When you have finished repeating the last sentence, stop the player, and continue on to back interpretation exercise.*

## **Back Interpretation Exercise**

### **Directions:**

*This part is a back interpretation exercise. Please insert the tape with the sentences you orally translated from English into your target language into the recorder. You are to listen to each sentence and orally translate it back into English. Pause your recorder at the end of each sentence to give you time for interpreting.*

*You may take notes to help you recall what is being said. If you need to, you may replay each sentence once. After you finish interpreting a sentence, move on to the next sentence.*

*Please do not look at the sight translation page while doing this exercise. To check on how you are doing with this exercise, it is recommended that you use a second recorder with another blank tape to record your back interpretation. After you finish back interpret the last sentence, you may play back your back interpretation sentences and check them against the original English sentences on the sight translation page.*

--- End of Oral Exercises ---





## LIST OF MEDICAL TERMINOLOGIES

*Prepared by  
Washington State Department of Social and Health Services  
Language Testing and Certification (LTC)*

### The Human Body

Abdomen	Fallopian tube
Ankle	Fat
Appendix	Filling (tooth)
Arm	Finger
Artery	Finger nails
Artery wall	Foot
Back	Forehead
Bladder	Gallbladder
Blood vessels	Gene
Bone	Genitalia
Bone marrow	Gland
Bone socket	Gums
Bowel	Hand
Brain	Hair
Breast	Head
Bronchus	Heart
Calf	Heel
Cartilage	Hip
Cecum	Intestine
Cell	Joint
Cerebral cortex	Kidney
Chest	Knee
Chromosome	Larynx
Colon	Leg
Denture	Spleen
Duodenum	Ligament
Ear	Limb
Elbow	Lip
Extremity (Extremities)	Liver
Eye	Lung
Eyeball	Membrane
Face	Mouth
	Muscle
	Nasal polyp

Neck  
Nerve  
Nose  
Nostrils  
Organ  
Ovary  
Palm  
Pelvis  
Platelets  
Pulse  
Rectum  
Rib  
Root-canal  
Shoulder  
Sinus  
Skin  
Sole  
Spinal cord  
Spine  
Stomach  
Tendon  
Thigh  
Throat  
Thumb  
Thyroid gland  
Tissue  
Toe  
Tongue  
Tonsils  
Tooth  
Tooth socket  
Trachea  
Trigeminal nerve  
Umbilical cord  
Uterus (Womb)  
Vein  
Vocal cord  
Waist  
Wrist

### Systems of the Human Body

Cardiovascular system

Circulatory system  
Digestive system  
Endocrine system  
Hemopoietic system  
Immune system  
Muscular system  
Nervous system  
Reproductive system  
Respiratory system  
Skeletal system  
Urinary system

### Bodily Fluids, etc.

Specimen of ...

Acid  
Bile  
Blood  
Feces  
Gas  
Menses  
Period  
Perspiration  
Pus  
Saliva  
Semen  
Sputum  
Sweat  
Tears  
Urine  
Vomit

### Symptoms, etc.

Abscess  
Acute  
Allergic  
Angina pectoris  
Asthma  
Anxious  
Arrhythmia  
Backache

Balance/Equilibrium  
Bleeding nose  
Blister  
Blood pressure (high/low)  
Blurred vision  
Boil  
Breathing difficulty  
Broken  
Bruise  
Burn  
Chest pain  
Chill  
Cold  
Cold sweat  
Collapse  
Constipated  
Contagious  
Contraction  
Cough  
Cramps  
Cut  
Cyanosis  
Decay  
Dehydration  
Depressed  
Diabetic  
Diarrhea  
Disturbance  
Dizzy  
Drowsy  
Drug overdose  
Earache  
Edema (Dropsy)  
Excretion  
Faint  
Fatigue/Tired  
Fever  
Gunshot wound  
Hangover  
Hay fever  
Headache  
Hear  
Heart attack  
Hurts

Impaired (Impairment)  
Indigestion  
Infection  
Inflamed (Inflammation)  
Injured (Injury)  
Insect bite  
Itch  
Labor  
Lump  
Migraine  
Nausea  
Nauseous  
Nervous  
Nosebleed  
Numb (Numbness)  
Pain--  
    burning  
    constant  
    dull  
    on and off  
    sharp  
    throbbing  
Pallor  
Palpitations  
Paralysed  
Phlegm  
Pleural rub  
Pregnant  
Premature (baby)  
Rales (Crackles)  
Rash  
Rheumatism  
Rhonchi (Wheezes)  
Salivation  
Sensation  
Shiver  
Shortness of breath  
Sight  
Sign  
Smell  
Sore  
Sore throat  
Spasm  
Spell

Sputum  
Stabbed  
Stiff (joint, neck etc.)  
Sting  
Stomach ache  
Stridor  
Suffocation  
Sunstroke  
Swelling  
Swollen  
Symptom  
Temperature  
Tense  
Tooth ache  
Tranquilize  
Tremor (body)  
Unconscious  
Upset stomach  
Vomiting  
Weak Spot  
Weakness  
Wound

**Clinical/Medical Procedures, etc.**

Abortion (Induced abortion)  
Amniocentesis  
Anesthetize  
Angiography  
Appendectomy  
Auscultation  
Autopsy  
Biopsy  
Birth control  
Blood test  
Blow  
Bronchoscopy  
Caesarean section abortion  
Cardiography  
Cardiopulmonary resuscitation (CPR)  
Castration  
Checkup  
Chest X-ray

Circumcision  
Cosmetic surgery  
CT scan of the chest  
Diagnose (Diagnosis)  
Dialysis  
Dilation and curettage (D & C)  
Duodenectomy  
Ectopic pregnancy (Tubular pregnancy)  
Electrocardiogram (ECG, EKG)  
Emergency  
Emergency room  
Endotracheal intubation  
Exhale  
Face-lift operation  
Gastrectomy  
General anesthetization  
Hold (your) breath  
Hypnosis  
Hypnotize  
Hysterectomy  
Immunization  
Incision  
Incubator  
Inhale  
Injection  
Intensive care  
I.V. (Intravenously)  
I.V.T. (Intravenous transfusion)  
Laparoscopy  
Laryngoscopy  
Local anesthetization  
Lumbar puncture (Spinal tap)  
Lung scan  
Mammography  
Mastectomy  
MRI scan of the chest  
Needle  
Neurological examination  
    Mental status and speech  
    Cranial nerves  
    The motor system  
    The sensory system  
    Reflexes  
Neurosurgery

Optometry  
Oxygen  
Percussion  
Plastic surgery  
Prognosis  
Pulmonary angiography  
Pulmonary function tests  
Recovery room  
Saline abortion  
Skeletal traction  
Skin test  
Sterilization  
Syringe  
Take a deep breath  
Test tube  
Thoracentesis  
Tonsillectomy  
Tracheostomy  
Traction  
Transplantation  
Tubal ligation  
Tube  
Tuberculin tests  
Tympanoplasty  
Ultrasound (Ultrasonography)  
Vaccinate  
Vasectomy

Diseases/Illnesses/Injuries/  
Physical Disorders, etc.

Abrasion  
Acute (disease)  
Addiction  
Advanced stage  
AIDS  
Ailment  
Allergy  
Alzheimer's disease  
Amnesia  
Anaemia  
Anaphylaxis  
Aneurysm

Anthraxosis  
Appendicitis  
Arthritis  
Arthropathy  
Asthma  
Astigmatism  
Atelectasis  
Athlete's foot (Tinea pedis)  
Atherosclerosis  
Atrophy  
Bacilli (singular: bacillus)  
Bacterial infection  
Bite (dog, snake, insect etc.)  
Bleed  
Blister  
Bone fracture  
Broke (break)  
Bronchogenic carcinoma  
Bruise  
Burn  
Calcium deficiency  
Cancer  
Cardiac edema  
Cataract  
Cecitis  
Cerebral concussion  
Cerebral hemorrhage  
Cerebral palsy  
Chicken pox  
Cholesterol  
Choke  
Chronic bronchitis  
Chronic obstructive pulmonary disease  
(COPD)  
Cirrhosis  
Clot/Clotting  
Colitis  
Color blindness  
Coma  
Communicable disease  
Congenital heart disease  
Congestion  
Conjunctivitis (Pink eye)  
Conscious

Contagious  
Convulsions  
Coronary artery disease  
Croup  
Cyst  
Cystic fibrosis  
Cystitis  
Deaf  
Deformity  
Dehydration  
Delirium  
Dementia  
Diabetes  
Diarrhea  
Die (dead, death)  
Diphtheria  
Dislocated (Dislocation)  
Down's syndrome  
Duodenal ulcer  
Dyslalia  
Dyslexia  
Dysphasia  
Dysphemia  
Ear infection  
Emphysema  
Epidemic  
Epistaxis  
Farsightedness/Hypermetropia  
Food poisoning  
Frostbite  
Gallstone  
Gastric bleeding  
Gastric ulcer  
Gastritis  
Goiter  
Gonorrhea  
Gout  
Gynopathy  
Handicapped  
Heart attack  
Heart burn  
Heart murmur  
Heat exhaustion  
Heat stroke

Hemorrhoid  
Hepatitis  
Herpes  
Hurt  
Hydrothorax  
Hyperactivity  
Hyperglycemia  
Hypertension  
Infected (Infection)  
Infertility  
Inflammation of ...  
Influenza (Flu)  
Internal bleeding  
Ischemia  
Jaundice  
Laryngitis  
Lead poisoning  
Leukemia  
Malnutrition  
Measles  
Melanoma  
Menopause  
Mental retardation  
Metastasize (tumor, cancer)  
Metastatic (tumor, cancer)  
Multiple sclerosis (MS)  
Mumps  
Mute  
Myocardial infarction  
Nearsightedness/Myopia  
Nephritis  
Night blindness/Nyctalopia  
Obesity  
Obstruction  
Occupation disease  
Otitis (externa, interna, media)  
Parasite  
Parkinson  
Paroxysmal  
Periodontal disease  
Pertussis  
Pigment/Pigmentation (blood, bile, etc.)  
Pleural effusion  
Pleurisy (Pleuritis)

Pneumonia  
Pneumoconiosis  
Pneumothorax  
Poison  
Polyuria  
Presbyopia  
Pulmonary abscess  
Pulmonary edema  
Pulmonary embolism  
Pulmonary infarction  
Purulent  
Rabies  
Rheumatic heart disease  
Rhinitis  
Rupture (of follicle, spleen etc.)  
Scab  
Scabies  
Scald  
Scar  
Schizophrenia  
Scleroderma  
Scoliosis  
Seizure  
Shock  
Sickle-cell anemia  
Silicosis  
Sprained  
Strep throat  
Stress  
Stroke  
Sty  
Syphilis  
Systole/Diastole (atrial, ventricular)  
Terminally (ill)  
Tetanus (Lockjaw)  
Thrombosis (blood clot)  
Tonsillitis  
Torn  
Trauma  
Traumatic brain injury  
Tuberculosis (TB)  
Tumor  
Urethritis  
Vaginitis

Venereal disease  
Vertigo  
Virus  
Whooping cough  
Withdrawal

Treatment, etc.

Acupuncture  
Airway  
Antihormonal therapy  
Blood transfusion  
Bandage/dressing  
Bone marrow transplant  
Brace  
Bypass  
Cast/Plaster  
Chemotherapy  
Chiropractic  
Coin rubbing  
Cure  
Exercise  
Exploratory surgery  
First aid  
Hearing aid  
Implant  
Injection  
In-patient  
Life support  
Lumpectomy  
Massage  
Mastectomy  
Medication  
Meditation  
Mouthwash  
Naturopathy  
Observation  
Operation  
Organ donor  
Out-patient  
Pacemaker (cardiac etc.)  
Physical therapy  
Prevent

Radiation  
Reconstructive surgery  
Rehabilitation  
Rehydration  
Restrains  
Side effect  
Splinting  
Sterilize  
Stitches  
Surgery  
Therapy  
Tourniquet

Prescription, etc.

Adverse effects  
Allopurinol  
Analgesic  
Anesthetic  
Antibiotics  
Anticoagulant  
Antidepressant  
Antihistamine  
Antipruritic  
Antiseptic  
Aspirin  
Bonine  
Cardiant  
Cardiazol  
Cardiotonic  
Chemicals  
Contraceptives  
Controlled drugs  
Cough drops  
Coumarin  
Cyclizine  
Dextrose/Glucose  
Digestant  
Diuretics  
Dosage  
Dose  
Dramamine  
Drug

Ear drops  
Eye drops  
Expectorant  
External use (medicine)  
Glyburide  
Herbs  
Hormone  
Ibuprofen  
Interactions (of drugs)  
Iodine  
Iron supplements  
Laxative  
Meclizine  
Medicine  
Mineral supplements  
Nicotine patch  
Nitroglycerin (Nitro)  
Nose drops  
Nose spray  
Ointment  
Over the counter (drugs)  
Oxytocin  
Pain killer  
Penicillin  
Phenformin  
Prescription  
Preventative  
Side effects  
Sleeping pills  
Special effect  
Specific  
Suppositories  
Tablets  
Tea spoon  
Throat drops  
Throat lozenges  
Tranquillizer  
Tylenol  
Vaccine  
Vitamin supplements  
Vitamins  
Warfarin/Coumadin



**Medical Professionals and  
Health Related Personnel**

Advanced Registered Nurse Practitioner  
(ARNP)

Anesthesiologist  
Anesthetist  
Cardiologist  
Certified Nurse Anesthetist  
Certified Nurse Midwife  
Chiropractor  
Counselor  
Dentist  
Doctor  
Endocrinologist  
Family Doctor  
Family Nurse Practitioner  
Gastroenterologist  
General Practitioner  
Gynecologist  
Internist  
Licensed Practical Nurse  
Mental Health Professional  
Neurologist  
Nurse  
Obstetric Nurse  
Obstetrician  
Ophthalmologist  
Optometrist  
Orthopedist  
Otorhinolaryngologist  
Paramedic  
Pediatrician  
Pediatric Nurse Practitioner  
Physician's Assistant  
Podiatrist  
Primary Care Provider  
Primary Physician  
Psychiatrist  
Psychologist  
Pulmonologist  
Radiologist  
Resident  
Rheumatologist

RN (Registered Nurse)  
Social Worker  
Surgeon

**Miscellaneous --- Medical and  
Health Related Expressions, etc.**

Accident  
Air lift  
Alcohol  
Ambulance  
Appetite  
Articulation  
Bacteria  
Benign  
Biologic(al) clock  
Blood type  
Cardiology  
Catheter  
Cholesterol  
Chromosome  
Circulation (blood)  
Clinic  
Contaminated  
Contraceptive  
Contract (a disease)  
Coronary care unit  
Cotton  
Coverage (insurance)  
Critical condition  
Crutch(es)  
Delivery room  
Diet  
Disinfectant  
Embryo  
Emergency room  
Environment  
Fast  
Fetal  
Fetus  
Gauze  
Genetic  
Germ

Gynecology  
Heal (Healing)  
Hormone  
Hospital  
Hygiene  
Immune  
Insurance  
Lab (Laboratory)  
Lethal (injection etc.)  
Liquids  
Malignant  
Malnutrition  
Malpractice  
Medical history  
Menopause  
Menstruation  
Metabolism  
Miscarriage  
Mortuary  
Negative (test result)  
Neurology  
NPO-nothing by mouth  
Nutrition  
Observation  
Obstetrics  
Operating room  
Orthopedics  
Otorhinolaryngology (ENT)  
Pathology  
Patient  
Pediatrics  
Pharmacy  
Pollutant  
Pollution  
Positive (test result)  
Postpartum  
Posture  
Prenatal  
Protein  
Puberty  
Quarantine  
Radiology  
Reactive  
Registration

Respiration  
Recovery room  
Sanitary napkins  
Satisfactory condition  
Scar  
Sensitive  
Serious condition  
Sexually transmitted disease (STD)  
Solid food  
Spread (cancer)  
Stable condition  
Stethoscope  
Stretcher  
Substance abuse  
Swallow  
Tampons  
Temperature  
Teratogen  
Thermometer  
Thrombocyte  
Topical  
Toxic/Toxicity  
Urination  
Vaccinated/Vaccination  
Vaccine  
Virus  
Waiting room  
Wart  
Weight (over, under, gain, lose)  
Wheelchair

**Language Interpreter and Translator  
Code of Professional Conduct**

**1. Accuracy**

Interpreters/translators shall always thoroughly and faithfully render the source language message, omitting or adding nothing, giving consideration to linguistic variations in both source and target languages, conserving the tone and spirit of the source language message.

**2. Cultural Sensitivity – Courtesy**

Interpreters/translators shall be culturally competent, sensitive, and respectful of the individual(s) they serve.

**3. Confidentiality**

Interpreters/translators shall not divulge any information obtained through their assignments, including but not limited to information gained through access to documents or other written material.

**4. Disclosure**

Interpreters/translators shall not publicly discuss, report, or offer an opinion concerning matters in which they are or have been engaged, even when that information is not privileged by law to be confidential.

**5. Proficiency**

Interpreters/translators shall meet the minimum proficiency standard set by DSHS by passing the required certification examination or screening evaluation.

**6. Compensation**

The fee schedule agreed to between the contracted language service providers and the department shall be the maximum compensation accepted. Interpreters/translators shall not accept additional money, compensation, or favor for services reimbursed by the department. Interpreters/translators shall not use for private or other's gain or advantage, the department's time, facilities, equipment, or supplies, nor shall they use or attempt to use their position to secure privileges or exemptions.

**7. Nondiscrimination**

Interpreters/translators shall always be neutral, impartial, and unbiased. Interpreters/translators shall not discriminate on the basis of gender, disability, race, color, national origin, age, socioeconomic or educational status, or religious or political beliefs.

**8. Self-evaluation**

Interpreters/translators shall accurately and completely represent their certifications, training, and experience.

**9. Impartiality - Conflict of Interest**

Interpreters/translators shall disclose any real or perceived conflict of interest which would affect their objectivity in the delivery of service. Providing interpreting or translation services for family members or friends may violate the individual's right to confidentiality, or constitute a conflict of interest.

**10. Professional Demeanor**

Interpreters/translators shall be punctual, prepared, and dressed in a manner appropriate and not distracting for the situation.

**11. Scope of Practice**

Interpreters/translators shall not counsel, refer, give advice, or express personal opinions, to individual for whom they are interpreting/translating, or engage in any other activities which may be construed to constitute a service other than interpreting/translating. Interpreters/translators are prohibited to have unsupervised access to clients, including but not limited to phoning clients directly.

**12. Reporting Obstacles to Practice**

Interpreters/translators shall assess at all times their ability to interpret/translate. Should interpreters/translators have any reservations about their competency, they must immediately notify the parties and offer to withdraw without threat of retaliation. Interpreter/translator may remain until more appropriate interpreters/translators can be secured.

**13. Ethical Violations**

Interpreters/translators shall immediately withdraw from encounters they perceive as violations of this Code. Any violation of the Code of Professional Conduct may cause termination of the contract.

**14. Professional Development**

Interpreters/translators shall develop their skills and knowledge through professional training, continuing education, and interaction with colleagues and specialists in related fields.

**THIS CODE APPLIES TO ALL PERSONS PROVIDING LANGUAGE INTERPRETING OR TRANSLATION SERVICES AND MUST BE COMPLIED WITH AT ALL TIMES.**