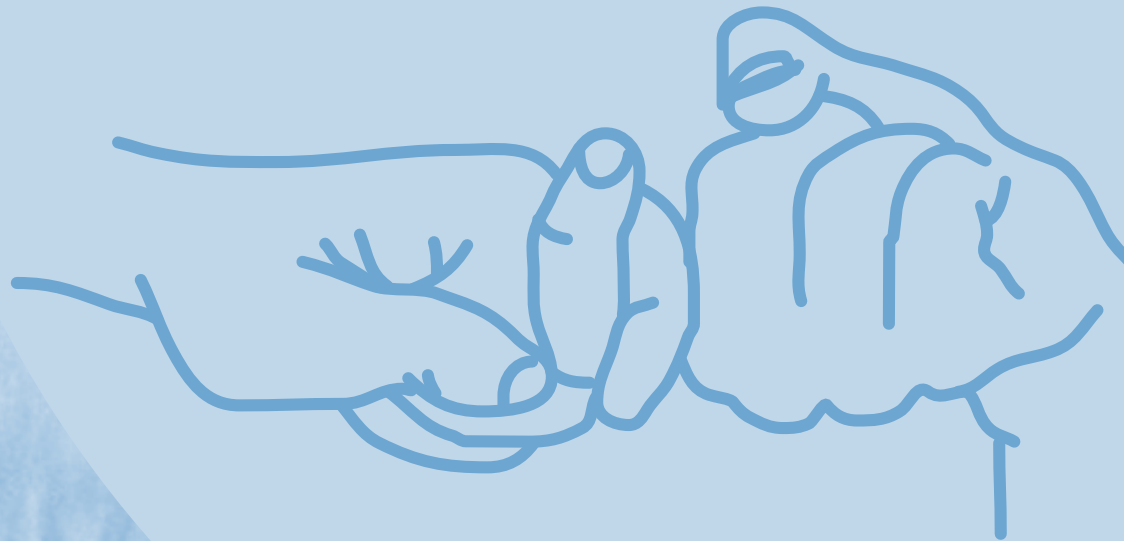


WASHINGTON STATE 2015 - 2017

Directory of Services

for People Who are
Deaf, Hard of Hearing and Deaf-Blind



Washington State
Department of Social
& Health Services

Transforming lives

**Office of the Deaf and Hard of Hearing
"Washington State Directory of Services for
People Who Are Deaf, Hard of Hearing and Deaf-
Blind"**

Jay Inslee

Office of the Governor
State of Washington

Kevin W. Quigley

Secretary
Department of Social and Health Services

Bill Moss

Assistant Secretary
Aging and Long-Term Support Administration

William Crites

Interim Director
Office of the Deaf and Hard of Hearing

Copyright Permissions and Terms of Use

Please feel free to copy this Directory of Services without permission for non-profit, educational purposes only. Use of or reference to this Directory should credit the Office of the Deaf and Hard of Hearing.

Disclaimer

The information contained in the Directory is for general information purposes only. The information is provided by the Office of the Deaf and Hard of Hearing (ODHH) and while the ODHH endeavors to keep the information up-to-date and correct, the ODHH makes no representations or warranties of any kind, express, or implied, about the completeness, accuracy, reliability, suitability or availability with respect to the information, products, services, or related graphics contained in the Directory for any purposes. Any reliance you place on such information is therefore strictly at your own risk.

In compiling this directory, ODHH has attempted to include as many relevant resources as it could. The inclusion or exclusion of a resource does not indicate or imply an endorsement or criticism by ODHH or DSHS. Likewise, any reference or link to a commercial product, process, service, or company does not indicate an endorsement of that product, process, service or company by ODHH or DSHS, and the omission of any such reference or link does not indicate disapproval by ODHH or DSHS.

This directory is intended to be a helpful starting point for persons seeking services, but further assessment of any resource is the responsibility of those persons.

Alternative Formats

Upon request, this document is available in alternative formats for persons with disabilities.

Table of Contents

Introduction	1
Office of the Deaf and Hard of Hearing.....	3
Telecommunication Relay Service	5
Regional Service Centers of the Deaf and Hard of Hearing	7
Department of Social and Health Services	9
State Government Agencies.....	13

Topics:

Assistive Technology.....	17
Captions.....	18
Community Organizations	18
Crisis Intervention	20
Deaf-Blind.....	21
Disabilities.....	23
Diversity	24
Education	26
Emergency Management	38
Employment	38
Families and Children.....	40
Hearing Aids - Financial Assistance.....	42
Hearing Loss	43
Housing	43
Human and Social Services.....	45
Interpreting.....	46
Interpreter Training Programs	50
Legal.....	50
Mental Health.....	54
Other - Businesses.....	57

Recreation	58
Senior Citizens / Aging.....	59
Service Animals.....	60
Sign Language	61
Telecommunications.....	62
Transportation	62

Dear Stakeholders,

The Office of the Deaf and Hard of Hearing provides information & referral to the general public. This is the third edition of the “Washington State Directory of Services for People who are Deaf, Hard of Hearing and Deaf-Blind” publication. This Directory is intended to be used as a guide.

Deaf, Hard of Hearing, Deaf-Blind individuals, their families, professionals, advocates, employees and other stakeholders can benefit from using the directory to obtain information about programs and services that provides equal access to effective communication in Washington State.

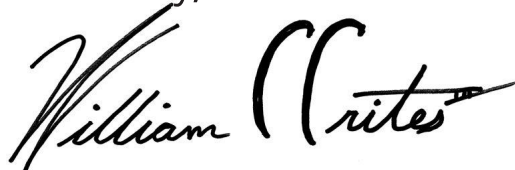
ODHH hopes that you will find the “Washington State Directory of Services for People who are Deaf, Hard of Hearing and Deaf-Blind” to be helpful and useful. It is important that you contact the agency or organization to learn more about their programs, services and activities and to determine if any resource will meet your specific needs. ODHH hopes that you will benefit and find our new online Directory of Services at <https://fortress.wa.gov/dshs/odhhapps/directory/resource.aspx> to be more accessible and convenient. The online version will contain national organizations. If you cannot find what you are looking for, please contact ODHH and we will be happy to assist you in finding appropriate resources that will meet your needs.

It is important that consumers have the opportunity to contact your organizations to learn more about the programs and services available and to help them determine if available resources will meet their specific needs. To update your information or have any comments, additions, omissions, changes, please submit the DSHS Form 10-443 "Organizations: Subscription and Directory Form" posted on the website. The Directory will be updated periodically online and republished every two years.

Thank you for helping us to connect the community needs and available services together. You may contact us as follows:

Office of the Deaf and Hard of Hearing
P.O. Box 45301
Olympia, WA 98504-5301
800-422-7930 Voice/TTY
360-902-8000 Voice/TTY
360-339-7382 VP
360-902-0855 Fax
E-mail: odhh@dshs.wa.gov
Website: <http://odhh.dshs.wa.gov>

Sincerely,

A handwritten signature in black ink that reads "William Crites". The signature is written in a cursive style with a long horizontal stroke at the end.

William Crites, Interim Director

Who do we serve?

Approximately 254,619 deaf and hard of hearing individuals live in the state of Washington. Four out of every 100 residents are deaf or hard of hearing. Washington State has one of the nation's largest deaf-blind population.

What do we offer?

Telecommunication Relay Service (TRS)

Relay operator services allows people with hearing loss to communicate effectively with others who do not have specialized telephone equipment, in a way similar to what a person with normal hearing and clear speech communicates with the telephone.

Telecommunication Equipment Distribution (TED)

Specialized telephone equipment is available to eligible clients. Trainers provide client training on how to use the equipment.

Deaf Blind Services (DBS)

Support Service Provider provides visual and environmental information. Communication Facilitator provides visual information access through close vision or tactile sign language during Video Relay Service and/or face to face calls via videophones and video relay services.

Sign Language Interpreter Management (SLIM)

A statewide contract for interpreter services is available so that individuals using sign language can communicate with government employees.

Assistive Communication Technology (ACT)

A loan & referral service provides assistive listening systems, real-time captioning and resources to other assistive technology.

Information & Referral (IR)

Respond to requests for information and referral about available resources.

Outreach & Training (OT)

Outreach activities increase awareness about diversity and culture. Training activities provide knowledge and skills to effectively serve people with hearing loss through the provision of reasonable accommodations.

Social & Human Services (SHS)

Non-profit Regional Service Centers of the Deaf and Hard of Hearing provides case management services and a variety of social and human services throughout Washington.

To request more information or obtain publications about the Office of the Deaf and Hard of Hearing and/or these programs & services, please contact ODHH at 360-902-8000 VITTY, 360-339-7382 VP or email at odhh@dshs.wa.gov

Telecommunication Relay Service (TRS)

Telecommunication Relay Service, better known as Washington Relay, is a free service that provides full telephone accessibility to people who are deaf, hard-of-hearing, deaf-blind, or have a speech disability.

- Washington Relay allows text-telephone (TTY) users to communicate with standard telephone users through specially trained Relay Operators (ROs).
- Washington Relay provides Captioned Telephone Service (CTS).
- Users can make calls to anywhere in the world, 24 hours a day, 365 days a year with no restrictions on the number, length, or type of calls.
- All calls are strictly confidential and no records of any conversations are maintained.
- Administered by the Washington State Office of the Deaf and Hard of Hearing and provided.

Services are being offered through Washington Relay:

- Directory Assistance
- TTY public payphones
- Billing preferences
- Customer Database Profile
- Internet Relay
- Voice Carry-Over
- Captioned Telephone Service
- Speech to Speech
- Hearing Carry-Over
- Telebraille
- Spanish Relay
- Outreach
- And much more

Washington Relay Customer Service

To contact Washington Relay Customer Service, please call (800) 676-3777 TTY/Voice/ASCII or Espanola (800) 676-4290 TTY/Voz/ASCII

- Receive assistance with a Relay call
- Make a complaint, suggestion, or comment
- Request brochures, outreach materials, or presentations

Email: askwashingtonrelay@dshs.wa.gov



Regional Service Centers

The Office of the Deaf and Hard of Hearing (ODHH) partners with non-profit organizations to provide client services at Regional Service Centers (RSC) throughout the State of Washington. RSC's provide case management services to individuals who are deaf, hard of hearing and deaf-blind. These centers also respond to requests for information and referral on programs, services and resources serving on benefitting individuals who are deaf, hard of hearing and deaf-blind. Each RSC has an Assistive Listening System (ALS) for small groups, organizations, businesses and government agencies to borrow for use in improving amplification during meetings. RSC's have qualified staff available to provide education, training and consultation on making public facilities, services and programs accessible under the Americans with Disabilities Act (ADA) and other related laws to people who are deaf, hard of hearing, late deafened and deaf-blind.

Deaf-Blind Service Center (DBSC)

1620 18th Ave., Suite 200
Seattle, WA 98122
Serving Statewide
(206) 455-7932 VP
(206) 323-9178 Voice
(206) 323-3644 TTY
(206) 328-8497 Fax
E-mail: info@seattledbsc.org
Website: www.seattledbsc.org

Nexus – Spokane

1206 N. Howard Street
Spokane, WA 99201
Serving Chelan, Douglas, Ferry, Grant, Lincoln, Okanogan, Pend Oreille, Spokane, Stevens and Whitman counties
(509) 315-2288 Voice/VP
(509) 328-9220 Voice/TTY
(509) 327-4622 Front Office Fax
E-mail: info@nexusinw.com
Website: www.nexusinw.com

Regional Service Centers

Hearing, Speech & Deafness Center (HSDC) - Bellingham

114 West Magnolia Street Suite 106

Bellingham, WA 98225

Serving Island, San Juan, Skagit and Whatcom

(866) 647-0910 Toll-free Voice

(877) 647-8508 Toll-free TTY

(360) 255-7167 Voice/VP

(360) 647-0910 Voice

(360) 647-8508 TTY

(360) 647-0923 FAX

E-mail: bellingham@hsvc.org

Website: www.hsvc.org

Hearing, Speech & Deafness Center (HSDC) - Seattle

1625 19th Avenue

Seattle, WA 98122

Serving Clallam, Jefferson, King, Kitsap and Snohomish counties

(888) 222-5036 Toll-free Voice

(800) 761-2821 Toll-free TTY

(206) 452-7953 Voice/VP

(206) 323-5770 Voice

(206) 388-1275 TTY

(206) 328-6871 Fax

E-mail: seattle@hsvc.org

Website: www.hsvc.org

Hearing, Speech & Deafness Center (HSDC) - Tacoma

3516 S. 47th Street Suite 200

Tacoma, WA 98409

Serving Grays Harbor, Mason, Peirce and Thurston counties

(866) 421-5560 Toll-free Voice

(866) 698-1748 Toll-free TTY

(253) 292-2209 Voice/VP

(253) 475-0782 Voice

(253) 474-1748 TTY

(253) 475-1188 Fax

E-mail: tacoma@hsvc.org

Website: www.hsvc.org

Southwest Washington Center of the Deaf and Hard of Hearing (SWCDHH) – Vancouver

301 SE. Hearthwood Blvd.

Vancouver, WA 98684

Serving Clark, Cowlitz, Lewis, Pacific, Skamania and Wahkiakum

(360) 334-5740 Voice/VP

(360) 695-3364 Voice

(360) 695-9720 TTY

(360) 695-2706 FAX

E-mail: frontdesk@swcdhh.org

Website: www.swcdhh.org

Department of Social and Health Services (DSHS)

The mission of DSHS is to transform lives.

If you have questions about the various services provided by DSHS Administrations, please contact the following address or the main phone numbers and they will transfer your call. Contact information is also provided on throughout the DSHS website: <https://www.dshs.wa.gov/>

EndHarm Report Child/Adult Abuse

Phone: Central Intake 1(800) 624-6186

Phone: (800) 688-1213

Phone: (866) 363-4276 Voice/TTY

Website: www.dshs.wa.gov/report-abuse-and-neglect

Aging and Long-Term Support Administration (AL TSA)

Blake Office Park West 4450 - 10th Ave. SE

Lacey, WA 98503

Phone: (800) 422-3263 Voice

Phone: (800) 422-7930 TTY

Phone: (360) 493-2637 TTY -

Regional Office

Website: www.dshs.wa.gov/altsa

- Long-Term Care Services & Information
- Long-Term Care Professionals & Providers
- Office of the Deaf and Hard of Hearing
- ProviderOne

Complaint Resolution for Residential Care Services - Adult Protective Services

Phone: (800) 562-6078 Voice

Phone: (800) 737-7931 TTY

Website: www.dshs.wa.gov/altsa/home-and-community-services/reporting-abuse

Behavioral Health and Service Integration Administration (BHSIA)

Washington Recovery Help Line: 1-866-789-1511

Phone: (206) 461-3219 TTY

Website: www.dshs.wa.gov/bhsia

- Division of Behavioral Health and Recovery
- Medicare/Medicaid Integration Project
 - Mental Health Treatment
 - Problem Gambling Prevention & Treatment

Department of Social and Health Services (DSHS)

- Recovery Support
- Substance Abuse Prevention and Mental Health Promotion
- Substance Use Treatment

State Hospitals

Child Study and Treatment Center

8805 Steilacoom Blvd SW
Lakewood, WA 98498

Phone: (253)756-2322 Voice

Phone: (800) 283-8639 Voice

Phone: (253)756-3985 FAX

Website: www.dshs.wa.gov/bhsia/division-state-hospitals/child-study-and-treatment-center

Eastern State Hospital

PO Box 800

Maple Street

Medical Lake, WA 99022-0800

Phone: (509) 565-4352 Voice

Phone: (509) 565-4705 FAX

Website: www.dshs.wa.gov/bhsia/division-state-hospitals/eastern-state-hospital-overview

Western State Hospital

9601 Steilacoom Blvd SW

Lakewood, Washington 98498-7213

Phone: (253) 582-8900 Voice

Phone: (253) 756-2879 FAX

Website: www.dshs.wa.gov/bhsia/division-state-hospitals/western-state-hospital-general-information

Department of Social and Health Services (DSHS)

Children's Administration (CA)

P.O. Box 45715

Olympia, WA 98504

Phone: (360) 725-6701 Voice

Phone: (888) 822-3541 Voice

E-mail: constrelations@dshs.wa.gov

Website: www.dshs.wa.gov/CA

- Advancing Child Welfare
- Adolescents
- Adoption
- Child Safety and Protection
- Contracted Providers
- Domestic Violence
- Foster Parenting
- Indian Child Welfare
- Parent Resources

Developmental Disabilities Administration (DDA)

P.O. Box 45310

Blake Office Park West

4450 – 10th Ave., SE

Olympia WA 98504-5310

Phone: (360) 725-3413 Voice

Phone: (360) 407-0955 Fax

E-mail: dddcoreception@dshs.wa.gov

Website: www.dshs.wa.gov/dda

- American Indians & Alaska Natives
- Autism Awareness
- Community Inclusion Newsletters
- DDA Assessment

- Early Support for Infants & Toddlers
- Eligibility
- Emergency Preparedness
- Events and Training
- Home Care Referral Agency
- Roads to Community Living
- Residential Provider Resources
- Residential Services
- Services and Programs (non-residential)
- Waiver Program
- County Best Practices
- Residential Provider Resources
- Personal Care Limitation Extension Process

Economic Services Administration (ESA)

724 Quince St. SE

Olympia, WA 98504

Phone: (360) 725-4350 Voice

Phone: (800) 833-6388 TTY

Website: www.dshs.wa.gov/esa/

- Community Partnership Program
- Community Services Office
- Office of Financial Recovery
- Disability Determination Services
- Division of Child Support
- Office of Refugee and Immigrant Assistance

Financial Services Administration (FSA)

P.O. Box 45045

Olympia, WA 98504

Phone: (360) 902-7805 Voice

Phone: (360) 902-7848 FAX

Website: www.dshs.wa.gov/fsa

- Background Checks
- Capital Programs
- Department Budget
- Electronic Forms
- Finance Services
- Language Testing & Certification
- Leased Facilities
- Ordering Forms
- Procurements & Contracting
- Record Schedules
- Tort Claims

Rehabilitation Administration (RA)

P.O. Box 45045

Olympia, WA 98504

Phone: (360) 902-7805 Voice

Phone: (360) 902-7848 FAX

Website: www.dshs.wa.gov/ra

- Division of Vocational Rehabilitation
- Juvenile Rehabilitation
- Office of Juvenile Justice
- Special Commitment Center

Services and Enterprise Support Administration (SESA)

14th & Jefferson

Olympia, WA 98504-5130

Phone: (800) 737-0617 Voice

E-mail: AskDSHS@dshs.wa.gov

Website: www.dshs.wa.gov/SESA

- Human Resources Division
- Information Systems Services Division
- Office of Communications
- Office of Continuous Improvement
- Office of Diversity and Inclusion
- Office of Fraud and Accountability
- Office of Indian Policy
- Office of Policy and External Relations
- Research and Data Analysis

State Government Agencies

Access Washington

Website: www.access.wa.gov

Washington Connection - Your Link to Services

Website: www.washingtonconnection.org/home/

Executive Branch

Office of the Governor (GOV)

PO Box 40002

Olympia, WA 98504-0002

Phone: (360) 902-4111 Voice

Phone: (360) 753-4110 FAX

Website: www.governor.wa.gov

Office of the Attorney General (AG)

PO Box 40100

Olympia, WA 98504-0100

Phone: (360) 753-6200 Voice

Phone: (800) 833-6384

Website: <http://www.atg.wa.gov/>

Office of Education Ombudsman (OEO)

Northgate Executive Center 1,
Bldg. B

155 NE 100th Street, Suite 210

Seattle, WA 98125-8012

Phone: (866) 297-2597 Voice

E-mail: OEOinfo@gov.wa.gov

Website: www.governor.wa.gov/oeo/

Office of the Secretary of State (SOS)

PO Box 40220

Olympia, WA 98504-0220

Phone: (360) 902-4151 Voice

Phone: (800) 422-8683 TTY

Phone: (360) 586-5629 FAX

E-mail: mail@secstate.wa.gov

Website: www.secstate.wa.gov

Office of Superintendent of Public Instruction (OSPI)

PO Box 47200

Olympia, WA 98504-7200

Phone: (360) 725-6000 Voice

Phone: (360) 664-3631 TTY

Phone: (360) 725-6075 Voice

Phone: (360) 586-0126 TTY

Website: www.k12.wa.us

State Government Agencies

Office of the Insurance Commissioner (OIC)

P.O. Box 40256
Olympia, WA 98504-0256
Phone: (800) 562-6900 Voice
Phone: (360) 752-7080 Voice
Phone: (360) 586-0241 TTY
Phone: (360) 586-2018 FAX
E-mail: CAP@oic.wa.gov
Website: www.insurance.wa.gov

General Government

Department of Enterprise Services (DES)

1500 Jefferson Street SE
Olympia, WA 98501
Phone: (360) 407-9200 Voice
E-mail: customermanagement@des.wa.gov
Website: http://des.wa.gov/

Office of Administrative Hearings (OAH)

2420 Bristol Court SW
PO Box 42488
Olympia, WA 98504-2488
Phone: (360) 407-2700 Voice
Phone: (360) 664-8721 FAX
Website: www.oah.wa.gov

Office of Financial Management (OFM)

PO Box 43113
Olympia, WA 98504-3113
Phone: (360) 902-0555 Voice
E-mail: ofm.administration@ofm.wa.gov
Website: www.ofm.wa.gov/

Public Disclosure Commission (PDC)

711 Capitol Way #206
Olympia, WA 98504-0908
Phone: (877) 601-2828 Voice
Phone: (360) 753-1111 Voice
Phone: (360) 753-1112 FAX
E-mail: pdc@pdc.wa.gov
Website: www.pdc.wa.gov/

State Government Agencies

Judiciary Branch

Administrative Office of the Courts (AOC)

1206 Quince Street SE
PO Box 41170
Olympia, WA 98504
Phone: (360) 705-5302 Voice
Phone: (360) 956-5700 FAX
E-mail: shirley.bondon@courts.
wa.gov
Website: www.courts.wa.gov

Office of Civil Legal Aid (OCLA)

1112 Quince Street SE
Olympia, WA 98504
Phone: (360) 704-4135 Voice
Phone: (360) 704-4003 FAX
Website: www.ocla.wa.gov
Office of Public Defense (OPD)

Evergreen Plaza Building

711 Capitol Way South, Suite 106
PO Box 40957
Olympia, WA 98504-0957
Phone: (360) 586-3164
Phone: (360) 586-8165 FAX
E-mail: opd@opd.wa.gov
Website: www.opd.wa.gov/

Washington State Law Library (WSLL)

Temple of Justice
415 - 12th Ave. SW
Olympia, WA 98501
Phone: (360) 357-2136 Voice
Phone: (360) 357-2153 FAX
E-mail: library.requests@courts.
wa.gov
Website: www.courts.wa.gov/li-
brary/

State Government Agencies

Legislative Branch

Washington State Legislature

Legislative Information Center

106 Legislative Building

Olympia, WA 98504

Phone: (360) 786-7573 Voice

Phone: (800) 635-9993 TTY

E-mail: support@leg.wa.gov

Website: www.leg.wa.gov

To request reasonable accommodations (interpreters, real-time captioning, assistive listening systems, publications in alternative format, etc.) the contact is as follows:

For the Senate:

Lucretia Turner

Senate Sergeant-at-Arms Office

P. O. Box 40482

Olympia, WA 98504-0482

Phone: (360) 786-7189 Voice

For the House:

Ken Conte

House Office of Program Research

P. O. Box 40600

Olympia, WA 98504-0600

Phone: (360) 786-7101 Voice

Phone: (800) 635-3933 TTY

Topics

Assistive Technology

Enhanced Vision, Vision Matters, LLC

13510 NE 188th Place
Woodinville, WA 98072
Phone: (888) 281-1492 Voice
Phone: (425) 892-0602 FAX
E-mail: dennis@visionmatters.net
Website: www.visionmatters.net

Hearing, Speech & Deafness Center Store (HSDC) Seattle Location

1625 - 19th Avenue
Seattle, WA 98122

Bellingham Location

114 West Magnolia Street, Suite 105
Bellingham WA 98225
Phone: (206) 323-5770 Voice/TTY
Phone: (888) 328-2974 Voice/TTY
Phone: (206) 328-6871 FAX
E-mail: store@hsvc.org
Website: www.hsvcstore.com

Washington Access Fund (WAF)

100 South King Street, Suite 280
Seattle, WA 98104
Phone: (206) 328-5116 Voice
Phone: (877) 428-5116 Voice
Phone: (888) 494-4775 TTY
Phone: (206) 328-5126 FAX
E-mail: info@washingtonaccessfund.org
washingtonaccessfund.org
E-mail: Leann@washingtonaccessfund.org
washingtonaccessfund.org
Website: www.washingtonaccessfund.org

Washington Assistive Technology Act Program (WATAP)

University of Washington
P.O. Box 357920
Seattle, WA 98195
Phone: (800) 214-8731 Voice
Phone: (866) 866-0162 TTY
Phone: (206) 543-4779 FAX
E-mail: watap@uw.edu
Website: www.watap.org

Captions

Washington Court Reporters Association (WCRA)

Website: www.washingtoncourtreporters.org

Department of Enterprise Services (DES)

1500 Jefferson Street SE
Olympia, WA 98501
Phone: (360) 664-6211 TTY
Phone: (360) 664-1960 Voice
Phone: (877) 664-1960 Voice
E-mail: information@dop.wa.gov
Website: <http://des.wa.gov/>

Communication Access Real Time Translation (CART):

<https://fortress.wa.gov/ga/apps/ContractSearch/ContractSummary.aspx?c=07010>

Stanton Captioning and Reporting On-Site and Remote CART/Captioning Services

Vanessa Stanton
Vancouver, WA
Phone: (360) 606-4228
E-mail: vcstanton29@clear.net

Community Organizations

Association of Late Deafened Adult (ALDA) - Puget Sound Chapter

Virginia Mason Medical Center
35501 - 1st Way South
Federal Way, WA 98003
Phone: (206) 767-3214 Voice
E-mail: paulat@centurylink.net
E-mail: info@alda.org
Website: <http://www.alda-pugetsound.com/>

Cochlear Implant Support Group - South Sound

Phone: (253) 256-3938 VP
Phone: (253) 256-4690 Voice
E-mail: Christine@CS-DHRS.com
Website: www.CS-DHRS.com

Hearing Loss Association of Washington (HLA-WA)

4820 – 156th Place SW
Edmonds, WA 98026-4846
Phone: (425) 742-3228 Voice/TTY/
FAX
E-Mail: info@hearingloss-wa.org
E-mail: chapters@hearingloss-wa.org
Website: <http://www.hearingloss-wa.org/>
Website: <http://www.loopseattle.org>

HLA-WA Chapter Listings –

Please check website for updates on chapters at <http://hearingloss-wa.org/chapters/>

Let's Loop Seattle

11810 - 209th Ave. NE
Redmond, WA 98053
Phone: (425) 785-4904 Voice
E-mail: loopseattle@gmail.com
E-mail: cheripz@gmail.com
Website: www.loopseattle.org

Puget Sound Association of the Deaf

2407 1/2 NW 60th Street
Seattle, WA 98107
Phone: (206) 452-0824 VP
E-mail: president@psadeaf.org
E-mail: secretary@psadeaf.org
Website: www.psadeaf.org

Seattle Public Library Deaf Services

Library Equal Access Program (LEAP)
1000 - 4th Ave
Seattle, WA 98104
Phone: (206) 615-1380 Voice
E-mail: leap@spl.org
E-mail: cleo.brooks@spl.org
Phone: (206) 386-4690 Voice/TTY
Website: www.spl.org

Sertoma

P.O. Box 1003
Tacoma, WA 98401
E-mail: lldobner@msn.com
Website: www.sertoma.org

Washington State Association of the Deaf (WSAD)

P.O. Box 15890
Seattle, WA 98115
E-mail: info@wsad.org
E-mail: president@wsad.org
Website: www.wsad.org

Washington Gallaudet University Alumni Association (WAGUAA)

PO Box 3512
Lynnwood, WA 98043
E-mail: waguaasecy@gmail.com
Website: www.waguaa.org

Washington State Deaf Senior Citizens (WSDSC)

PO Box 145
Lynden, WA 98264
Phone: (360) 707-7597 VP
E-mail: ellenscheppach@yahoo.com
E-Mail: vanscheppach@yahoo.com

Crisis Intervention

Abused Deaf Women's Advocacy Services (ADWAS)

8623 Roosevelt Way NE
Seattle, WA 98115
Phone: (206) 922-7088 VP
Phone: (206) 726-0017 FAX
E-mail: adwas@adwas.org
Website: www.adwas.org

National Domestic Violence Hotline through ADWAS

Phone: 1-855-812-1001 VP
Phone: ADWAS Main Office (206) 922-7088 VP
Phone: 1- 800-787-3224 TTY
Phone: 1-800-799-7233 Voice
AIM: DeafHotline
E-mail: Deafhelp@thehotline.org
Website: www.adwas.org/hotline/national/

Victim Support Services

P.O. Box 1949

Everett, WA 98206

Phone: (425) 259-0784 TTY

Phone: (425) 252-6081 Voice

Phone: (800) 346-7555 Voice

Phone: (425) 259-1730 FAX

E-mail: [contactus@](mailto:contactus@victimsupportservices.org)

victimsupportservices.org

Website: [www.](http://www.victimsupportservices.org)

victimsupportservices.org

Deaf-Blind

Deaf-Blind Service Center (DBSC)

1620 18th Ave., Suite 200

Seattle, WA 98122

Phone: (206) 455-7932 Voice/VP

Phone: (206) 323-9178 TTY

Phone: (206) 328-8497 FAX

E-mail: info@seattledbsc.org

Website: www.seattledbsc.org

Angela Theriault

Position: Executive Director

E-mail: atheriault@seattledbsc.org

Department of Services for the Blind (DSB)

4565 7th Avenue SE

Lacey, WA 98503

Phone: (800) 552-7103 Voice

Phone: (206) 721-4056 TTY

Phone: (360) 407-0679 FAX

E-mail: info@dsb.wa.gov

Website: www.dsb.wa.gov

Helen Keller National Center-Northwestern Region (HKNC)

1620 18th Avenue, Suite 201

Seattle, WA 98122

Phone: (206) 324-1133

CaptionCall

Phone: (206) 452-0049 VP

Phone: (206) 324-1920 Voice/TTY

Phone: (206) 324-9159 FAX

E-mail: dorothy.walt@hknc.org

Website: www.hknc.org/

Inland Northwest Lighthouse (INL)

6405 N. Addison Street

Spokane, WA 99208

Phone: (509) 487-0405 Voice

Phone: (206) 452-5715 VP

Phone: (206) 436-2234 FAX

Website: <http://seattlelighthouse.org/inl/>

Lighthouse for the Blind, Inc. (LH)

2501 South Plum Street
Seattle, WA 98144
PO Box 14959
Seattle, WA 98114
Phone: (206) 322-4200 Voice/TTY
Phone: (206) 452-5715 VP
Phone: (206) 436-2234 FAX
E-mail: Akoehl@SeattleLH.org
Website: <http://seattlelighthouse.org/>

Washington Sensory Disabilities Services (WSDS) Washington State Services for Children with Deaf-Blindness

800 Oakesdale Avenue SW
Renton, WA 98057
Phone: (800) 572-7000 Voice
Phone: (425) 917-7827 Voice
Phone: (425) 917-7838 Fax
E-mail: wds@psed.org
Website: www.wdsdsonline.org

Washington State Deaf-Blind Citizens (WSDBC)

P.O Box 2322
Seattle, WA 98111
E-mail: wdsdbcprez@gmail.com
Website: www.wdsdbc.org

Washington State School for the Blind (WSB)

2214 E. 13th Street
Vancouver, WA 98661
Phone: (360) 696-6321 Voice
Phone: (360) 737-2120 FAX
Website: www.wssb.wa.gov

Washington Talking Book and Braille Library (WTBBL)

2021 - 9th Ave.
Seattle, WA 98121-2783
Phone: (206) 615-0400 Voice
Phone: (800) 542-0866 Voice
Phone: (206) 615-0437 FAX
E-mail: wtbbl@sos.wa.gov
Website: www.wtbbl.org

Disabilities

Alliance of People with disAbilities

1120 E. Terrace Ste. 100
Seattle, WA 98122
Phone: (206) 545-7055 Voice
Phone: (800) 545-7055 Voice
Phone: (206) 545-7059 FAX
E-mail: info@disablitypride.org
Website: www.disabilitypride.org

Center for Independence

7801 Bridgeport Way W. Ste. #200
Lakewood, WA 98499
Phone: (253) 582-1253 Voice
Phone: (800) 724-8172 Voice
Phone: (253) 584-4374 FAX
E-mail: connect@centerforindependence.org
Website: www.centerforindependence.org

Center for Independence North Sound

114 W. Magnolia Ste. #104
Bellingham, WA 98225
Phone: (360) 393-3890 Voice
Phone: (888) 482-4839 Voice
Phone: (360) 778-1743 FAX
E-mail: info@cfinorth.org
Website: www.cfinorth.org

Coalition of Responsible Disabled (CORD)

612 North Maple St
Spokane, WA 99201
Phone: (509) 326-6355 Voice/TTY
Phone: (877) 606-2680 Voice
Phone: (509) 327-2420 FAX
E-mail: info@scilwa.org
Website: <http://www.wasilc.org/about/ACIL.html>

Easter Seals Washington

200 W. Mercer Street, Suite E -120
Seattle, WA 98119 - 4347
Phone: (206) 281-5700 Voice
Phone: (206) 284-0938 FAX
E-mail: info@wa.easterseals.com
Website: www.wa.easterseals.com

Puget Sound Regional Services (Supported Living Program)

149 Park Avenue North, Suite "A"
Renton, WA 98057
PO Box 2577
Renton, WA 98056
Phone: (206) 772-5700 Voice
Phone: (206) 267-0024 TTY
Phone: (206) 772-4937 FAX
E-mail: chigman@gopsrs.org
E-mail: pganliker@gopsrs.org
Website: <http://www.gopsrs.org>

State Independent Living Council (SILC)

4565 7Th Avenue SE
Lacey, WA 98503
Phone: (360) 725-3692 Voice
Phone: (800) 624-4105 Voice
Phone: (360) 407-3899 FAX
E-mail: velaem@dshs.wa.gov
Website: <http://www.wasilc.org>

Washington State Developmental Disabilities Council (WSDDC)

2600 Martin Way E. Ste. F
Olympia, WA 98504
PO Box 48314
Olympia, WA 98504
Phone: (360) 586-3560 Voice
Phone: (800) 634-4473 Voice
E-mail: linda.west@ddc.wa.gov
Website: www.ddc.wa.gov

Diversity

Commission on African American Affairs (CAAA)

General Administration Building
210-11th Avenue SW, Suite 301A
Olympia, WA 98504
Phone: (360) 725-5664 Voice
E-mail: ed.prince@caa.wa.gov
Website: [http://www.caa.wa.gov/
contact/StaffContactInfo.shtml](http://www.caa.wa.gov/contact/StaffContactInfo.shtml)

Commission on Asian Pacific American Affairs (CAPAA)

General Administration Building
210-11th Avenue SW, Suite 301
Olympia, WA 98504
Phone: (360) 725-5667 Voice
Phone: (360) 360-586-9501
E-mail: capaa@capaa.wa.gov
Website: <http://www.capaa.wa.gov/contact/index.shtml>

Commission on Hispanic Affairs (CHA)

P.O. Box 40924
Olympia, WA 98504
Phone: (800) 443-0294 Voice
Phone: (360) 725-5661 Voice
Phone: (360) 586-9501
E-mail: hispanic@cha.wa.gov
Website: <http://www.cha.wa.gov/>

Governor's Office of Indian Affairs (GOIA)

General Administration Building
210-11th Avenue SW, Suite 415
Olympia, WA 98504
Phone: (360) 902-8825 Voice
Phone: (360) 902-8829 FAX
E-mail: mystique.hurtado@goia.wa.gov
Website: www.goia.wa.gov

Office of Diversity and Inclusion (ODI)

1115 Washington St. SE
Olympia, WA 98504
Phone: (360) 902-7999
E-mail: crosses2@dshs.wa.gov
Website: <http://www.dshs.wa.gov/sesa/office-diversity-and-inclusion>

Office of Indian Policy (OIP)

PO Box 45105
Olympia, Washington 98504-5105
Phone: (360) 902-7706 Voice
Website: <http://www.dshs.wa.gov/sesa/office-indian-policy>

Office of Minority and Women's Business Enterprise (MWBE)

General Administration Building
210-11th Avenue SW, Suite 401
Olympia, WA 98501
Phone: (866) 208-1064 Voice
Phone: (360) 586-7079 FAX
E-mail: receptionist@omwbe.wa.gov
Website: <http://omwbe.wa.gov/>

Education

Office of Education Ombudsman (OEO)

Northgate Executive Center 1,
Bldg. B
155 NE 100th Street, Suite 210
Seattle, WA 98125-8012
Phone: (866) 297-2597 Voice
E-mail: OEOinfo@gov.wa.gov
Website: <http://www.governor.wa.gov/oeo/>

Office of Superintendent of Public Instruction (OSPI)

PO Box 47200
Olympia, WA 98504-7200
Phone: (360) 725-6000 Voice
Phone: (360) 664-3631 TTY
Phone: (360) 725-6075 Voice
Phone: (360) 586-0126 TTY
Website: www.k12.wa.us

K-12 Programs – STATEWIDE

Center for Childhood Deafness and Hearing Loss (CDHL)

Outreach Team

611 Grand Boulevard
Vancouver WA 98661-4918
Phone: (855) 342-1670 Voice
E-mail: outreachteam@cdhl.wa.gov
Website: www.cdhl.wa.gov

Washington School for the Deaf (WSD)

611 Grand Boulevard
Vancouver, WA 98661
Phone: (800) 613-4228 Voice/TTY
Phone: (360) 696-6525 Voice/TTY
Phone: (360) 696-6291 Fax
Website: www.wsd.wa.gov

Washington Sensory Disabilities Services (WSDS)

800 Oakesdale Avenue SW
Renton, WA 98057
Phone: (800) 572-7000 Voice/TTY
Phone: (425) 917-7827 Voice/TTY
E-Mail: wdsd@psed.org
Website: www.wsdsonline.org

Washington Sensory Disabilities Services (WSDS)

Deaf and Hard of Hearing Students Educational Services

WSDS/CWU - 7409

400 E. University Way

Ellensburg, WA 98926

Phone: (509) 359-8035 VP

Phone: (509) 963-1131 Voice

Website: www.wsdsonline.org

Carol Carrothers

Position: Coordinator of Deaf/Hard of Hearing Services

E-mail: carolc@cwu.edu

Washington State School for the Blind (WSSB)

2214 E. 13th Street

Vancouver, WA 98661

Phone: (360) 696-6321 Voice

Phone: (360) 737-2120 FAX

Website: <http://www.wssb.wa.gov/>

Private Schools

Listen and Talk - Education for Children with Hearing Loss

8610 8th Ave NE

Seattle, WA 98115

Phone: (206) 985-6646 Voice

Phone: (206) 985-6687 FAX

E-mail: suzanneq@listentalk.org

Website: www.listentalk.org

Northwest School for Deaf and Hard of Hearing Children

15303 Westminster Way North

Shoreline WA 98133

Phone: (206) 364-4605 Voice/TTY

Phone: (206) 367-3014 FAX

E-mail: n.miller@northwestschool.com

Website: www.northwestschool.com

School Districts

To find out if your school district has an oral, residential, mainstreamed or deaf and hard of hearing program, there is a directory that includes the following school personnel: administrators, audiologists, teachers of the Deaf, educational interpreters and sign language programs available at <http://www.wsdsonline.org/deafhh/directory.html>

Edmonds School District

9300 - 236th St. SW
Edmonds, WA 98020
Phone: (206) 556-7695 VP
Phone: (425) 431-7213 Voice
Phone: (425) 431-7985 FAX
Website: www.edmonds.wednet.edu

Alicia Carter

Position: Program Director
E-mail: cartera@edmonds.wednet.edu

Evergreen School District

Special Education Department
14619-B NE 49th Street
Vancouver, WA 98668
Phone: (360) 604-6700 Voice
Phone: (360) 604-6702 FAX
E-Mail: Cynthia.Christensen@EvergreenPS.org
Website: <http://www.evergreenps.org/Pages/default.aspx>

Federal Way Public Schools

33330 8th Avenue S.
Federal Way, WA 98003
Phone: (253) 945-2000 Voice
Phone: (253) 945-4582 FAX
E-mail: comments@fwps.org
E-mail: librown@fwps.org
Website: <http://www.fwps.org/dept/sped/hearing/>

Highline Public Schools

Special Services
15675 Ambaum Blvd. SW
Burien, WA 98146
Phone: (206) 631-3231 Voice
E-mail: Deborah.Holcomb@highlineschools.org
Website: <http://www.highlineschools.org/site/Default.aspx?PageID=209>

North Thurston Public Schools

305 College Street NE
Lacey, WA 98516
Phone: (360) 412-4482 Voice
Phone: (360) 412-4557 FAX
Maddy deGive, Director of Special
Education
(360) 412-4466 Voice
E-mail: mdegive@nthurston.k12.wa.us
Website: www.nthurston.k12.wa.us

Orting High School

320 Washington Ave. North
Orting, WA 98360
Phone: (360) 893-2246 Voice
E-mail: hirschkornm@orting.wednet.edu
Website: www.orting.wednet.edu

Puyallup School District

Puyallup Special Services
214 West Main
Puyallup, WA 98371
(253) 841-8700 Voice
(253) 841-8655 Fax
Karen Mool, Assistant Director of
Special Services
Email: moolkm@puyallup.k12.wa.us
Email: spec-servs@puyallup.K12.wa.us
Website: www.puyallup.k12.wa.us

Seattle Public Schools

2445 - 3rd Ave. South
Seattle, WA 98134
Phone: (206) 252-0058 Voice
Phone: (206) 252-0053 FAX
E-mail: specialed@seattleschools.org
Website: www.seattleschools.org

Tacoma School District #10

P.O. Box 1357

Tacoma, WA 98401

Phone: (253) 571-1000 Voice

E-mail: csantor@tacoma.k12.wa.us

Website: <http://www.tacoma.k12.wa.us/information/departments/student-services/Pages/DeafAndHardOfHearing.aspx>

Disability Support Services at Community & Technical Colleges

Bates Technical College

Downtown Campus, Room M212

1101 South Yakima Avenue

Tacoma, WA 98405

Phone: (253) 680-7000 Voice

Phone: (253) 680-7013 Voice

Phone: (253) 680-7010 Voice

E-mail: dss@bates.ctc.edu

Website: www.bates.ctc.edu

Big Bend Community College

Disability Support Services, Office 1481

7662 Chanute Street N.E.

Moses Lake, WA 98837

Phone: (509) 762-2222 Voice

Phone: (509) 793-2027 Voice

Phone: (509) 762-6335 TTY

E-mail: loraa@bigbend.edu

Website: www.bigbend.edu

Cascadia Community College

Disability Support Services

Kodiak Corner/Student Services Center

18345 Campus Way NE

Bothell, WA 98011

Phone: (425) 352-8128 Voice

Phone: (425) 352-8000 Voice

Phone: (425) 352-8137 Fax

E-mail: disabilities@cascadia.edu

Website: <http://www.cascadia.edu/>

Centralia Community College

Center for Disability Services
Student Center Building, Counseling Center

600 Centralia College Blvd.

Centralia, WA 98531

Phone: (360) 736-9391 ext. 320

Voice

Phone: (360) 753-3433 ext. 320

Voice

Phone: (360) 807-6227 TTY

E-mail: mhoel@centralia.edu

Website: www.centralia.edu/students/disabilities/

Clover Park Technical College

4500 Steilacoom Blvd

Lakewood, WA 98499

Phone: (253) 589-5800 Voice

Website: <http://www.cptc.edu/disabilities>

Edmonds Community College

Services for Students with Disabilities

Mountlake Terrace Hall 159

20000 – 68th Ave. W.

Lynnwood, WA 98036

Phone: (425) 640-1320 Voice

Phone: (425) 774-8669 TTY

E-mail: ssdmail@edcc.edu

Website: www.edcc.edu/ssd

Everett Community College

Center for Disabilities Services

2000 Tower Street

Everett, WA 98201

Phone: (425) 388-9272 Voice

Phone: (425) 388-9100 Voice

Phone: (425) 388-9438 TTY

Phone: (425) 388-9109 TTY

E-mail: cds@everettcc.edu

Website: www.everettcc.edu/resources/cds/

Green River Community College

Disability Support Services

Lindbloom Student Center, 2nd

Floor, Room 271A

12401 SE 320th Street

Auburn, WA 98092

Phone: (253) 833-9111 Ext. 2631

Voice

Phone: (253) 288-3359 TTY

Phone: (253) 288-3471 FAX

E-mail: DSS@greenriver.edu

Website: www.greenriver.edu/DSS

Highline Community College

Deaf and Hard of Hearing Services
Building 99, Room 150-185
2400 South 240th Street
Des Moines, WA 98198
Phone: (253) 237-1106 VP
Phone: (206) 870-4853 TTY
Phone: (206) 878-3710 ext. 3857
Voice
E-mail: nallen@highline.edu
Website: <http://access.highline.edu/dhhservices.php>

North Seattle Community College

Disability Support Services
9600 College Way North
Seattle, WA 98103
Phone: (206) 934-3697 Voice
Phone: (206) 934-0079 TTY
E-mail: ds@sccd.ctc.edu
Website: <https://northseattle.edu/disability-services>

Renton Technical College

Special Needs Office
3000 NE 4th Street
Renton, WA 98056
Phone: (425) 235-2352 Voice
Phone: (425) 235-5811 TTY
E-mail: kforbes@RTC.edu
Website: <http://www.rtc.edu/page/learning-resource-career-center-0>

Seattle Central Community College

Disabilities Support Services
DSS Office, BE1112 (Broadway
Edison Building)
1701 Broadway
Seattle, WA 98122
Phone: (206) 934-4185 Voice
Phone: (206) 934-4183 Voice
Phone: (206) 934-3236 Fax
E-mail: cebrina.chavez@seattlecolleges.edu
Website: <http://seattlecentral.edu/disability-support/index.php>

Shoreline Community College

Office of Special Services
16101 Greenwood Ave. North
Foss Bldg., Rm 5229
Seattle, WA 98133
Phone: (206) 546-4545 Voice
Phone: (206) 546-4520 TTY
Phone: (206) 533-5109 FAX
E-mail: ssd@shoreline.edu
Website: <http://www.shoreline.edu/oss/students-with-disabilities/default.aspx>

South Puget Sound Community College

Disability Support Services
Student Life: Building 27, Second
Floor
2011 Mottman Rd SW
Olympia, WA 98512
Phone: (360) 596-5306 Voice
Phone: (360) 596-5394 Voice
Phone: (360) 569-5439 TTY
Phone: (360) 586-4884 TTY
Phone: (360) 754-7711 Voice
E-mail: dss@spscc.edu
Website: <http://www.spscc.ctc.edu/current-students/services/dss>

South Seattle Community College

6000 - 16th Avenue SW
Seattle, WA 98106
Phone: (800) 833-6388 TTY
Phone: (206) 934-5137 Voice
Phone: (206) 934-6649 FAX
E-mail: Rose.Kolovrat@seattlecolleges.edu
Website: <http://www.southseattle.edu/disability-support/>

Spokane Community College Deaf and Hard of Hearing Services

1810 North Greene Street, MS
2151
Spokane, WA 99217
Phone: (509) 533-8881 Voice
Phone: (509) 533-8610 TTY
Phone: (509) 315-2269 VP by appointment
Phone: (509) 533-8877 FAX
E-mail: shillebrandt@scc.spokane.edu
Website: www.scc.spokane.edu/

Spokane Falls Community College

3410 W. Fort George Wright Dr. -
MS 3011

Spokane, WA 99224-5288

Phone: (888) 327-6914 VP

Phone: (509) 533-4166 Voice

Phone: (509) 533-3838 TTY

Phone: (509) 533-3547 Fax

E-mail: benw@spokanefalls.edu

Website: www.spokanefalls.edu

Tacoma Community College

6501 S. 19th Street

Tacoma, WA 98466

Phone: (253) 566-5328 Voice

Phone: (253) 566-5000 Voice

Phone: (253) 566-5319 TTY

E-mail: kheld@tacomacc.edu

Website: <http://www.tacomacc.edu/resourcesandservices/accessservices/>

Walla Walla Community College

Disability Support Services

500 Tausick Way

Walla Walla, WA 99362

Phone: (509) 527-4543 Voice Wal-
la Walla

Phone: (509) 527-4412 TTY Wal-
la Walla

Phone: (509) 758-1718 Voice
Clarkston

E-mail: claudia.angus@wwcc.edu

E-mail: carol.bennett@wwcc.edu

Website: [http://www.wwcc.edu/
CMS/index.php?id=993](http://www.wwcc.edu/CMS/index.php?id=993)

Wenatchee Valley Community College

Disability Support Services

Wenatchi Hall, Room 2133

1300 Fifth Street

Wenatchee, WA 98801

Phone: (509) 682-6854 Voice

Phone: (509) 682-6853 TTY

Phone: (509) 682-6837 TTY

E-mail: cboyd@wvc.edu

Website: [http://www.wvc.edu/di-
rectory/departments/disability/](http://www.wvc.edu/directory/departments/disability/)

Yakima Valley Community College

Disability Support Services
South 16th Ave. & Nob Hill Blvd.
Yakima, WA 98902
Phone: (509) 574-4960 Voice
Phone: (509) 574-4677 TTY
E-mail: mcoomer@yvcc.edu
Website: <http://www.yvcc.edu/resources/dss/Pages/default.aspx>

Disability Support Services at Colleges & Universities

Bellevue College

Disability Resource Center
3000 Landerholm Circle SE
Bellevue, WA 98007
Phone: (425) 564-2498 Voice
Phone: (425) 564-4110 TTY
E-mail: drc@bellevuecollege.edu
Website: www.bellevuecollege.edu/dss.asp

Evergreen State College

Access Services for Students with Disabilities, LIB 2153
2700 Evergreen Parkway NW
Olympia, WA 98505
Phone: (360) 867-6348 Voice
Phone: (360) 867-6834 TTY
Phone: (360) 867-6360 FAX
E-mail: inocenc@evergreen.edu
Website: www.evergreen.edu/access/

Pierce College

Access & Disability Services
1601 39th Avenue S.E.
Puyallup, WA 98374
Phone: (253) 840-8335 Voice
Phone: (253) 840-8474 TTY
E-mail: dssaccess@pierce.ctc.edu
E-mail: PuyDSSAccess@pierce.ctc.edu
Website: www.pierce.ctc.edu/dist/supportservices/ads/

Pierce College Fort Steilacoom

Access & Disability Services - Welcome Center

9401 Farwest Drive SW

Lakewood, WA 98498-1999

Phone: (253) 964-6468 Voice

Phone: (253) 964-6228 TTY

Phone: (253) 964-6449 FAX

E-mail: dssaccess@pierce.ctc.edu

Website: www.pierce.ctc.edu/access/contact.php

Central Washington University

LI Building, 400 E. University Way
Ellensburg, WA 98926

Phone: (509) 963-2171 Voice

Phone: (509) 963-1218 Voice

Phone: (509) 963-2143 TTY

Phone: (509) 963-3235 FAX

E-mail: dssrecept@cwu.edu

Website: www.cwu.edu/~dss/

Disability Support Services

E-mail: dahlberc@cwu.edu

Website: <http://www.cwu.edu/disability-support/>

Eastern Washington University

Disability Support Services

124 Tawanka Hall

Cheney, WA 99004

Phone: (509) 359-6871 Voice

Fax: (509) 359-7458

E-mail: DSS@ewu.edu

Website: [http://access.ewu.edu/](http://access.ewu.edu/Disability-Support-Services.xml)

[Disability-Support-Services.xml](http://access.ewu.edu/Disability-Support-Services.xml)

Pacific Lutheran University

Disability Support Services

University Center 300

12180 Park Avenue South

106 Ramstad Hall

Tacoma, WA 98447

Phone: (253) 535-7206 Voice

Phone: (253) 531-6900 Voice

E-mail: tweeteri@plu.edu

E-mail: dss@plu.edu

Website: www.plu.edu/dss/home.php

Seattle Pacific University

Disability Support Services The
Center for Learning
Lower Moyer Hall
3307 3rd Ave. W., Suite 214
Seattle, WA 98119
Phone: (206) 281-2272 Voice
Phone: (206) 281-2224 TTY
Phone: (206) 286-7348 FAX
E-mail: dss@spu.edu
Website: www.spu.edu/depts/cfl/dss/index.asp

Seattle University

Disabilities Services
901 - 12th Avenue
Seattle, WA 98122
Phone: (206) 296-5740 Voice
E-mail: bohonikc@seattleu.edu
Website: <http://www.seattleu.edu/disabilities-services/>

University of Washington

UW Disability Services Office
Suite 836, Condon Hall
1100 NE Campus Parkway
Seattle, WA 98195
Phone: (206) 543-9450 Voice
Phone: (206) 543-6452 TTY
Phone: (206) 685-7264 FAX
E-mail: dso@u.washington.edu
Website: <http://www.washington.edu/admin/dso/>

University of Washington -

Bothell Disability Office
Student Success Center, UW – 1,
Room 170
18115 Campus Way NE
Bothell, WA 98011-8246
Rosa Lundborg, M.Ed.
Phone: (425) 352-5307
Phone: (425) 352-5303 TTY
Email: rlundborg@uwb.edu
Website: <http://www.uwb.edu/studentaffairs/drs>

University of Washington - Tacoma

Division of Student Affairs
1900 Commerce Street
Tacoma, WA 98402-3100
Phone: (253) 692-4522
Email: dssuwt@uw.edu
Website: <http://directory.tacoma.uw.edu/department/disability-support-services>

Washington State University – Pullman Access Center

217 Washington Building
Pullman, WA 99164
Phone: (509) 335-3417 Voice/TTY
Phone: (509) 335-1566 Voice
Phone: (509) 335-8511 FAX
E-mail: Access.Center@wsu.edu
Website: <http://accesscenter.wsu.edu/accommodations/>

Washington State University - Spokane Campus

600 N. Riverpoint Blvd.
P.O. Box 1495
Spokane, WA 99212
Phone: (509) 358-7534 Voice
Phone: (509) 358-7983 FAX
E-mail: liz.west@wsu.edu
Website: <http://spokane.wsu.edu/students2/student-affairs/disability-resourcess.html>

Washington State University - Tri-Cities Campus

West Building, Room 269
2710 University Drive
Richland, WA 99354
Phone: (509) 372-7352 Voice
E-mail: ctijerina@tricity.wsu.edu
Website: <http://www.tricity.wsu.edu/disability/>

Washington State University - Vancouver Campus

Student Services Center
14204 NE Salmon Creek Avenue
Vancouver, WA 98686
Phone: (360) 546-9155 Voice
Phone: (360) 546-9138 Voice
Phone: (360) 546-9031 TTY
E-mail: disability@vancouver.wsu.edu
Website: <http://studentaffairs.vancouver.wsu.edu/access-center>

Western Oregon University

Regional Resource Center on Deafness
345 North Monmouth Ave.
Monmouth, OR 97361
Phone: (503) 838-8444 Voice
E-mail: rrcd@wou.edu
Website: <http://www.wou.edu/education/sped/rrcd.php>

Western Washington University

DisAbility Resources for Students
516 High Street, Old Main 120
Bellingham, WA 98225-9019
Phone: (360) 255-7175 VP
Phone: (360) 650-3083 Voice
Phone: (360) 650-3715 TTY
E-mail: drs@wwu.edu
Website: www.wwu.edu/drs/
Kim Thiessen
Title: Deaf Services Coordinator and Accommodation Counselor
E-mail: kim.thiessen@wwu.edu

Other Educational Programs

PEPNet - Postsecondary Education Program Network

345 N. Monmouth Ave.
Monmouth, OR 97361
Phone: (971) 239-0405 VP
Phone: (503) 838-8642 Voice
E-mail: heather.holmes@pepnet.org
Website: www.pepnet.org

The Moose Project

4001 N. Cook
Spokane, WA 99207
Phone: (509) 443-5905
E-mail: mooseproject@comcast.net
Website: www.mooseproject.net

Emergency Management

American Red Cross Chapters of Washington State

Website: <http://www.redcross.org/find-your-local-chapter>

CS Deaf and Hard of Hearing Specialist (CS-DHRS)

10611 Canyon Rd E, #214
Puyallup, WA 98373
Phone: (253) 256-3938 VP
Phone: (253) 256-4690 Voice
Website: www.cs-dhhrs.com
Christine Seymour, Emergency Education Program Educator
E-mail: Christine@CS-DHRS.org

Emergency Email Network

Website: www.emergencyemail.org

Washington Military Department (WMD) Emergency Management Division

20 Aviation Drive
Building 20, MS TA-20
Camp Murray, WA 98430-5112
Phone: (800) 562-6108 Voice
Phone: (253) 512-7000 Voice
Phone: (253) 512-7298 TTY
Phone: (800) 688-8955 Voice
Phone: (888) 849-2727 Voice
Website: www.emd.wa.gov/index.shtml

Employment

Able Opportunities, Inc.

36243 Hansville Rd. NE
P.O. Box 468
Hansville, WA 98340
Jennifer White
Phone: (360) 638-0881 Voice/TTY
Phone: (206) 406-9900 Voice
E-mail: jennifer@ableopportunities.com
Website: www.ableopportunities.com

Client Assistant Program (CAP)

2531 Rainer Avenue South
Seattle, WA 98144
Phone: (206) 721-5999 Voice
Phone: (800) 544-2121 Voice
Phone: (206) 721-6072 TTY
Phone: (888) 721-6072 TTY
E-mail: info@washingtoncap.org
Website: www.washingtoncap.org

Division of Vocational Rehabilitation (DVR)

4565 7th Avenue SE
Lacey, WA 98503-1044
Phone: (360) 725-3636 Voice/TTY
Phone: (800) 637-5627 Voice/TTY
List of Counselors: Website:
<https://www.dshs.wa.gov/jjra/division-vocational-rehabilitation/deaf-and-hard-hearing>

Employment Security Department (ESD)

212 Maple Park Ave. SE
Olympia, WA 98504
Phone: (360) 890-3500 Voice
E-mail: Uitelecenters@Esd.wa.gov
Website: <http://www.esd.wa.gov/>

Goodwill - Work Opportunity Center - Longview

1030 15th Avenue, Suite 300
Longview, WA 98632
Phone: (360) 501-8340 Voice/TTY
E-mail: kchilson@tacomagoodwill.org
E-mail: rblasw@tacomagoodwill.org
Website: www.tacomagoodwill.org

Governor's Committee on Disability Issues and Employment (GCDE)

212 Maple Park Ave. SE
Olympia, WA 98504
Phone: 360-890-3500 Voice Email:
gcde@esd.wa.gov Website:
www.esd.wa.gov/newsandinformation/legresources/gcde/

Washington State Rehabilitation Council (SRC)

PO Box 45343
Olympia, WA 98504
Phone: (866) 252-2939 Voice
Phone: (360) 725-3690 Voice
E-mail: brounjm@dshs.wa.gov
Website: <http://www.wastrehab-council.org/>

Washington Vocational Services – Employment Services

22316 – 70th Ave. Suite D
Mountlake Terrace, WA 98043
Phone: (425) 329-3676 VP
Phone: (425) 774-3338 Voice
Phone: (425) 744-1555 FAX
E-mail: pbouwer@wvs.org
E-mail: pfrisk@wvs.org
Website: www.wvs.org

Work Opportunities - Lynnwood

6515 - 202nd St. S.W.
Lynnwood, WA 98036
Phone: (425) 329-8533 VP
Phone: (425) 778-5051 Voice
E-mail: marysd@workopportunities.org
E-mail: jenniferm@workopportunities.org
Website: www.workopportunities.org

Work Opportunities - Mountlake Terrace

22316 70th Ave W.
Mountlake Terrace, WA 98043
Phone: (425) 329-8533 VP
Phone: (425) 778-5051 Voice
E-mail: marysd@workopportunities.org
Website: www.workopportunities.org

Families and Children

Department of Early Learning (DEL) Early Support for Infants and Toddlers (ESIT) State Interagency Coordinating Council for Infants and Toddlers with Disabilities and their Families

1110 Jefferson
P.O. Box 40970
Olympia, WA 98504
Phone: (360) 725-4665 Voice
Phone: (866) 482-4325 Voice
Phone: (360) 725-4925 FAX
Phone: (360) 725-3500 Voice
E-mail: Karen.Walker@del.wa.gov
E-mail: Linda.Jennings@del.wa.gov
Website: www.del.wa.gov/esit
Website: www.del.wa.gov/development/esit/councils.aspx

The Moose Project

4001 N. Cook
Spokane, WA 99207
Phone: (509) 443-5905
E-mail: mooseproject@comcast.net
Website: www.mooseproject.net

PAVE

6316 South 12th Street
Tacoma, WA 98465
Phone: (253) 565-2266 Voice
Phone: (800) 572-7368 Voice
Phone: (253) 566-8052 FAX
E-mail: pave@wapave.org
Website: www.wapave.org

Washington State Department of Health (DOH) Early Hearing Loss Detection, Diagnosis and Intervention Program (EHDDI)

1610 NE 150th Street
Shoreline, WA 98155
Phone: (206) 418-5613 Voice
Phone: (888) 923-4334 Voice
Phone: (206) 418-5415 FAX
E-mail: ehddi2@doh.wa.gov
Website: www.doh.wa.gov/early-
hearingloss

Washington Sensory Disabilities Services (WSDS)

800 Oakesdale Avenue SW
Renton, WA 98057
Phone: (800) 572-7000 Voice
Phone: (425) 917-7827 Voice
Phone: (425) 917-7838 Fax
E-Mail: wsds@psed.org
Website: www.wsdsonline.org

Washington State Hands and Voices (WSHV)

PO Box 4022
Bellevue, WA 98009
Phone: (425) 268-7087 Voice
Phone: (877) 289-2796 FAX
E-mail: info@wahandsandvoices.
org
E-mail: join@wahandsandvoices.
org
Website: www.wahandsandvoic-
es.org

Hearing Aids - Financial Assistance

Division of Vocational Rehabilitation Headquarters

4565 7th Avenue SE
Lacey, WA 98503-1044
Find a DVR Office: <https://www.dshs.wa.gov/jjra/dvr/find-an-office>
Phone: (800) 637-5627 Voice/TTY
Website: www.dshs.wa.gov/jjra/division-vocational-rehabilitation/deaf-and-hard-hearing

Northwest Lions Foundation for Sight and Hearing

1200 6th Ave., Ste 300
Seattle, WA 98101-1128
Phone: (206) 682-8500 Voice
Phone: (800) 847-5786 Voice
Phone: (206) 838-4627 FAX
E-mail: info@nlfoundation.org
Website: www.nlfoundation.org

Washington Access Fund (WAF)

100 South King Street, Suite 280
Seattle, WA 98104
Phone: (206) 328-5116 Voice
Phone: (877) 428-5116 Voice
Phone: (888) 494-4775 TTY
Phone: (206) 328-5126 FAX
E-mail: info@washingtonaccessfund.org
E-mail: Leann@washingtonaccessfund.org
Website: www.washingtonaccessfund.org

Washington Assistive Technology Act Program through Hearing, Speech, and Deafness Center; University of Washington Technology & Disability Studies

1625 – 19th Avenue
Seattle, WA 98122
(888) 222-5036 Toll-free Voice
(800) 761-2821 Toll-free TTY
(206) 452-7953 Voice/VP
(206) 323-5770 Voice
(206) 388-1275 TTY
(206) 328-6871 Fax
E-mail: seattle@hxdc.org
Website: www.hxdc.org

Hearing Loss

Hearing Loss Association of Washington (HLA-WA)

4820 – 156th Place SW

Edmonds, WA 98026-4846

Phone: (425) 742-3228 Voice/TTY/
FAX

E-Mail: info@hearingloss-wa.org

E-mail: chapters@hearingloss-wa.org

Website: <http://www.hearingloss-wa.org/>

Website: <http://www.loopseattle.org>

Washington Speech-Language-Hearing Association (WSLHA)

2150 N. 107th Street, Suite 205
Seattle, WA 98133

Phone: (206) 367-8704 Voice

Phone: (206) 367-8777 FAX

E-mail: office@wslha.org

Website: www.wslha.org

Housing

Association of Washington Housing Authorities c/o Walla Walla Housing Authority

501 Cayuse Street

Walla Walla, WA 99362

Phone: (509) 527-4611 Voice

Website: www.awha.org

Common Ground - Seattle Office

419 Occidental Avenue, Suite 201
Seattle, WA 98104

Phone: (206) 461-3871 FAX

Phone: (206) 461-4500 Voice

E-mail: info@commongroundwa.org

Website: <http://www.common-groundwa.org>

Common Ground - Spokane Office

720 W. Boone, Suite 101

Spokane, WA 99201

Phone: (509) 326-5964 FAX

Phone: (509) 326-3678 Voice

E-mail: info@commongroundwa.org

Website: www.commonground-wa.org

Fair Housing Center of Washington

1517 S. Fawcett, Suite 250,
Tacoma, Washington 98402
Phone: (888) 766-8800 Voice/TTY
Phone: (253) 274-9523 Voice/TTY
Phone: (253) 274-8220 FAX
E-mail: info@fhcwwashington.org
Website: www.fhcwwashington.org

Housing and Urban Development in Washington

Website: www.hud.gov/local/index.cfm?state=wa

Northwest Fair Housing Alliance

35 W. Main, Suite 250
Spokane, WA
Phone: (509) 325-2665 Voice
Phone: (509) 325-2716 FAX
Website: www.nwfairhouse.org

Washington State Community Action Partnerships

Website: www.wapartnership.org/

Washington Community Reinvestment Association

1200 Fifth Avenue, Suite 1406
Seattle, WA 98101
(206) 292-2922 Voice
(800) 788-6508 Voice
(206) 292-0782 Fax
E-mail: info@wcra.net
Website: www.wcra.net/

Washington State Housing Finance Commission

1000 Second Avenue, Suite 2700
Seattle WA 98104
Phone: (206) 464-7139 Voice
Phone: (800) 767-4663 Voice
Phone: (206) 587-5113 FAX
Website: <http://www.wshfc.org/index.htm>

Washington Low Income Housing Alliance

1411 Fourth Ave Ste 850
Seattle WA 98101
Phone: (206) 442-9455 FAX
Phone: (206) 467-4522 Voice
Phone: (206) 623-4669 FAX
Website: www.wliha.org/

Williams Investments (Housing/ Apartments)

1020 W. Casino Road
Everett, WA 98204
Phone: (425) 355-0353
Phone: (425) 876-2623
E-mail: apartments@williamsinvestments.vpweb.com
Website: <http://www.williamsinvest.com/>

Human & Social Services

Department of Corrections (DOC)

7345 Linderson Way SW
Tumwater, WA 98501-6504
P.O. Box 41100
Olympia, WA 98504
Phone: (360) 725-8213 Voice/TTY
Website: www.doc.wa.gov

Employment Security Department (ESD)

212 Maple Park Ave. SE
Olympia, WA 98504
Phone: (360) 890-3500 Voice
Phone: (800) 833-6388 TTY
E-mail: work@esd.wa.gov
Website: <http://www.esd.wa.gov>

Department of Health (DOH)

P.O. Box 47890
Olympia, WA 98504-7890
Phone: (800) 525-0127 Voice
Phone: (360) 360-236-4030
Website: [http://www.doh.wa.gov/
Home.aspx](http://www.doh.wa.gov/Home.aspx)

Health Care Authority (HCA)

P.O. Box 45502
Olympia, WA 98504
Phone: (360) 725-1040 Voice
Phone: (800) 660-9840 Voice
Website: [http://www.hca.wa.gov/
Pages/index.aspx](http://www.hca.wa.gov/Pages/index.aspx)

Department of Labor and Industries (LNI)

7273 Linderson Way SW
Tumwater, WA 98501-5414
P.O. Box 44000
Olympia, WA 98504
Phone: (360) 902-5797 TTY
Phone: (360) 902-5798 FAX
Phone: (800) 547-8367 Voice
Website: www.lni.wa.gov

Department of Veterans Affairs (DVA)

1102 Quince Street SE
PO Box 41150
Olympia, WA 98504
Phone: (360) 725-2199 TTY
Phone: (360) 725-2200 Voice
Phone: (800) 562-0132 Voice
E-mail: heidia@dva.wa.gov
Website: <http://www.dva.wa.gov/>

Interpreting –

Independent Contractors and Interpreting Referral Agencies

For an updated listing, please check the ODHHS website: <http://www.dshs.wa.gov/altsa/odhh/contractor-wa-state>

INDEPENDENT CONTRACTORS

Agy, Roma

Olympia, WA
Phone: (360) 480-6482
E-mail: roma.agny@outlook.com

Andrews, Roxie

University Place, WA
Phone: (253) 861-5251 Voice
E-mail: jandrews16@juno.com

Bazinet, Paula

Kennewick, WA
Phone: (509) 851-8848
E-mail: paulabazinet@gmail.com
E-mail: paulabazinet@yahoo.com

Boivin, Johnne

Tenino, WA
Phone: (360) 704-8140
Phone: (360) 539-8829
E-mail: angelhandsinterpreting@gmail.com

Boote, Alyson

Seattle, WA
Phone: (206) 883-8127
E-mail: alysonboote@gmail.com

Bunze, Katherine

Spokane, WA
Phone: (509) 475-5597
E-mail: katherinebunze@msn.com
E-mail: Kathybunze@gmail.com

Kosanovich, Jane

Olympia, WA
Phone: (253) 759-0696
Phone: (206) 203-4247 FAX
E-mail: janeterps@gmail.com

Kosanovich, Michael

Olympia, WA

Phone: (253) 686-6657 Voice

Phone: (206) 203-4247 FAX

E-mail: aslmichaelterp@net-venture.com

E-mail: mekosanovich@gmail.com

MacLean, Polly

Lakewood, WA

Phone: (253) 381-3547

E-mail: 2pollym@gmail.com

E-mail: polly.mac@comcast.net

Siegel, Verna

ASL Interpreting Services

Centralia, WA

Phone: (360) 280-8112

Phone: (360) 736-6742 FAX

E-mail: verna.siegel@gmail.com

INTERPRETER REFERRAL AGENCIES

All Hands Community Interpreting Services

P.O. Box 458

Orting, WA 98360

Phone: (360) 897-8300

Phone: (888) 704-8309

Phone: (360) 897-8302 FAX

E-mail: allhandscis@centurytel.net

E-mail: rena.allhandscis@centurytel.net

Website: www.allhandscis.com

ASL Interpreter Network

PO Box 17414

Seattle, WA 98909

Phone: (253) 759-7653

Phone: (509) 895-7136 FAX

E-mail: aslprofessionals@comcast.net

ASL Professionals

PO Box 10324

Yakima, WA 98127

Phone: (206) 527-9555

Phone: (206) 527-9557 FAX

E-mail: manager@aslnetwork.com

Website: www.aslnetwork.com

Away with Words Interpreter Services, LLC

PO Box 1074
Chewelah, WA 99109
Phone: (509) 935-6224
E-mail: awaywithwordsasl@gmail.com
Website: www.awaywithwordsasl.com

CODAs Plus

800 NE Tenney Rd, Suite #110,
PMB 433
Vancouver, WA 98685
Phone: (360) 947-5100
E-mail: codasplus@comcast.net
Website: www.codasplus.com

Columbia Language Services

9301 NE Fourth Plain Road
Vancouver, WA 98662
Phone: (360) 896-3881
Phone: (888) 202-3301
E-mail: info@columbia-language.com
Website: <https://columbia-language.com/>

Cross Cultural Communications

PO Box 2166
Sumner, WA 98390
Phone: (253) 447-2000
Phone: (253) 447-2041 FAX
E-mail: michael.jordan@crossculturalcom.us
Website: <http://cccinterpreting.com/>

HandDancer Interpreter Services

5320 Nielsen Ave.
Ferndale, WA 98248
Phone: (360) 383-2293
Phone: (360) 739-3878
Phone: (360) 383-2274 FAX
E-mail: hnddncr@aol.com
Website: <http://handdancerinterpreters.com/>

NEXUS

1206 N. Howard Street
Spokane, WA 99201
Phone: (509) 328-9220
Phone: (509) 327-4622 FAX
E-mail: director@nexus.INW.com
E-mail: info@nexusINW.com
E-mail: IS@nexusINW.com
Website: <http://www.nexusinw.com/>

**SignOn
Hearing, Speech & Deafness
Center (HSDC),**

1625 - 19th Ave.
Seattle, WA 98122
Phone: (206) 632-7100
Phone: (206) 632-0405 FAX
E-mail: signon@hcdc.org
Website: www.signonasl.com
Website: www.hcdc.org

**South Eastern Washington
Service Center of the Deaf and
Hard of Hearing - (SEWSCDHH)
- Pasco**

124 N 5th Ave
Pasco, WA 99301
Phone: (509) 543-9644
Phone: (509) 205-2284
Phone: (509) 416-2221 VP
E-mail: interpretingsewscdhh@safe-mail.net
E-mail: chandler@sewscdhh.org
Website: www.sewscdhh.org

Strada Communication, Inc.

605 Main Street #4727
Vancouver, WA 98660
Phone: (360) 573-5464
E-mail: scheduling@stradagize.com
Website: <http://stradagize.com/>

Universal Language Service, Inc.

P.O. Box 4147
Bellevue, WA 98009
Phone: (425) 454-8074
Phone: (888) 462-0500
Phone: (877) 516-4347 FAX
E-mail: Scheduling@ULSonLine.net
Website: www.ULSonline.net

**Washington State Registry of
Interpreters for the Deaf**

PO Box 20334
Seattle, WA 98102
Phone: (206) 781-2109 Voice
E-mail: wsrid@wsrid.com
Website: www.wsrid.com/

Interpreter Training Programs

Spokane Falls Community College

3410 W. Fort George Wright Dr. -
MS 3190

Spokane, WA 99224-5288

Phone: (509) 533-3730 Voice

Phone: (509) 533-3618 Voice

E-mail: corrine.morrow@spokane-falls.edu

E-mail: marie.rendon@spokane-falls.edu

Website: <http://www.spokane-falls.edu/TechProf/HumanServices/Interpreter.aspx>

Western Oregon University

ASL/English Interpreting Program

Regional Resource Center on Deafness

345 North Monmouth Ave.

Monmouth, OR 97361

Phone: (503) 838-8444 Voice/TTY

Phone: (503) 838-8228 FAX

E-mail: interpretingprogram@wou.edu

Website: <http://www.wou.edu/education/sped/bsbai.php>

Legal

City of Bellingham ADA Coordinator

210 Lottie Street

Bellingham, WA 98225

Phone: (360) 778-8382 TTY

Phone: (360) 778-7901 FAX

Phone: (360) 778-7900 Voice

Email: pw@cob.org

Website: <http://www.cob.org/government/access/ada-accommodations-request.aspx>

Client Assistant Program (CAP)

2531 Rainer Avenue South
Seattle, WA 98144

Phone: (206) 721-5999 Voice

Phone: (800) 544-2121 Voice

Phone: (206) 721-6072 TTY

Phone: (888) 721-6072 TTY

E-mail: info@washingtoncap.org

Website: www.washingtoncap.org

Disability Rights Washington

315 – 5th Avenue South, Suite
850
Seattle, WA 98104
Phone: (206) 324-1521 Voice
Phone: (800) 562-2702 Voice
Phone: (206) 957-0728 TTY
Phone: (800) 905-0209 TTY
Phone: (206) 957-0729 FAX
E-mail: info@dr-wa.org
Website: www.disabilityrightswa.org

King County Bar Association

1200 Fifth Avenue Suite 600
Seattle, WA 98101
Phone: (206) 267-7099 FAX
Phone: (206) 267-7100 Voice
Website: www.kcba.org

King County Office of Civil Rights & Open Government

401 Fifth Ave., Suite 215
Seattle, WA 98104
Phone: (206) 263-2446
E-mail: Civil-Rights.OCR@king-county.gov
Website: www.kingcounty.gov/exec/civilrights.aspx

Law Office of Michael J. Izak, PLLC

P.O. Box 58605
Renton, WA 98058
Phone: (253) 638-1433 TTY
Phone: (253) 234-1577 Voice
Phone: (253) 630-1375 FAX
Michael Izak, Attorney
E-mail: surdus.law@gmail.com

Northwest ADA Center

University of Washington
6912 220th St S.W., Suite 105
Mountlake Terrace, WA 98043
Phone: (800) 949-4232 Voice
Phone: (425) 233-8913 VP
E-mail: nwadactr@uw.edu
Website: www.nwadacenter.org

Northwest Justice Project

401 Second Avenue, Suite 407
Seattle, WA 98118
Phone: (206) 464-1519 Voice/FAX
Phone: (888) 201-1014 Voice
Phone: (888) 201-9736 FAX
Website: <http://nwjustice.org/>

Office of Education Ombudsman (OEO)

Northgate Executive Center 1,
Bldg. B
155 NE 100th Street, Suite 210
Seattle, WA 98125-8012
Phone: (866) 297-2597 Voice
E-mail: OEOinfo@gov.wa.gov
Website: <http://www.governor.wa.gov/oeo/>

Seattle Office for Civil Rights Office for Civil Rights , Central Building

810 3rd Avenue Suite 750
Seattle, WA 98104-1627
Phone: (206) 684-4500 Voice
Phone: (206) 684-4503 TTY
Phone: (206) 684-0332 FAX
Website: www.seattle.gov/civil-rights/

Tacoma Human Rights and Human Services Department

747 Market Street, Room 836
Tacoma, WA 98402
Phone: (253) 591-5151 Voice
Phone: (253) 591-5153 TTY
E-mail: hrhs@cityoftacoma.org
Website: [www.cityoftacoma.org/
Page.aspx?nid=144](http://www.cityoftacoma.org/Page.aspx?nid=144)

U.S. Department of Justice United State Attorney's Office

Western District of Washington Seattle

United State Attorney's Office
700 Steward Street, Suite 5220
Seattle, WA 98101
Phone: (800) 797-6722 Voice
Phone: (206) 553-7970 Voice
Phone: (206) 553-0882 Fax
Website: [http://www.justice.gov/
usao-wdwa/contact-us](http://www.justice.gov/usao-wdwa/contact-us)

Tacoma

United State Attorney's Office
1201 Pacific Avenue, Suite 700
Tacoma, WA 98402
Phone: (253) 428-3800 Voice
Phone: (253) 428-3826 Fax
Website: [http://www.justice.gov/
usao-wdwa/contact-us](http://www.justice.gov/usao-wdwa/contact-us)

Eastern District of Washington Spokane

United State Attorney's Office
PO Box 1494
Spokane, WA 99210-1494
Phone: (509) 353-2767 Voice
Phone: (509) 835-6397 Fax
Website: [http://www.justice.gov/
usao/district/edwa](http://www.justice.gov/usao/district/edwa)

Yakima

United State Attorney's Office
402 E. Yakima Ave., Suite 210
Yakima, WA 98901
Phone: (509) 454-4425 Voice
Phone: (509) 249-3297 Fax
Website: <http://www.justice.gov/usao/district/edwa>

U.S. Equal Employment Opportunity Commission

909 1st Avenue, Suite 400
Seattle, WA 98104
Phone: (206) 220-6882 TTY
Phone: (206) 220-6882 TTY
Phone: (800) 669-4000 Voice
Website: <http://www.eeoc.gov>

Washington Communication Access Project (WASH-CAP)

425 Chuckanut Drive N. #9
Bellington, WA 98229
Phone: (360) 738-3756 Voice
E-mail: charlenemackenzie@com-cast.net or
E-mail: bertleder@msn.com
Website: www.wash-cap.com

Washington State Bar Association

1325 Fourth Ave. Suite 600
Seattle, WA 98101
Phone: (206) 443-9722 Voice
Phone: (800) 945-9722 Voice
Phone: (206) 727-8319 FAX
E-mail: questions@wsba.org
Website: www.wsba.org

Washington State Human Rights Commission - Olympia Office

711 S. Capitol Way, Suite 402
Olympia, WA 98504
Phone: (800) 300-7525 TTY
Phone: (800) 233-3247 Voice
Phone: (360) 586-2282 FAX
<http://www.hum.wa.gov>

Washington State Human Rights Commission - Spokane Office

Great Western Building
W 905 Riverside Avenue, Suite 416
Spokane, WA 99201
Phone: (509) 456-4441 FAX
Phone: (509) 456-4473 Voice
Website: <http://www.hum.wa.gov>

Washington State Human Rights Commission - Yakima Office

32 N. 3Rd, Suite 422
Yakima, WA 98901
Phone: (509) 575-2064 FAX
Phone: (800) 662-2755 Voice
Website: www.hum.wa.gov

Mental Health

Abused Deaf Women's Advocacy Services (ADWAS)

Dov Wills, LMHC, Therapist
8623 Roosevelt Way NE
Seattle, WA 98115
Phone: Direct line: 206-512-8528
VP
Phone: (206) 922-7088
Phone: (206) 726-0017 FAX
Website: www.adwas.org

Anne B Norton, Psy S, LPC LMHCA

Mental Health Counseling and Coaching provided via Computer, Face-to-Face
Phone: (907) 315-3985
E-mail: annebnorton@gmail.com
Website: www.pediatricpsych-alaska.com

Beth Hirnle, NCC, LMHC

Private Practice
10827 NE 68th St. Suite E
Kirkland, WA 98033
Phone: (425) 443-9893 Voice
Phone: (425) 307-6540 FAX
E-mail: BethHirnle@msn.com

Central Washington Comprehensive Mental Health - Yakima County Behavioral Healthcare

402 South Fourth Avenue
Yakima, WA 98902
Phone: (509) 573-3642 Voice
Phone: (888) 828-2962 Voice
Phone: (509) 576-4331 TTY
Website: www.cwcmh.org

Columbia River Mental Health Services – Clark County

6926 NE Fourth Plain Blvd
Vancouver, WA 98661
Phone: (360) 993-3000 Voice
Phone: (360) 993-3001 TTY
Phone: (360) 993-3047 FAX
E-mail: info@crmhs.org
Website: www.crmhs.org

Deaf Access Washington – Yakima County

409 North 57th Avenue
Yakima, WA 98908-2715
P.O. Box 30
Yakima, WA 98907-0030
Phone: (509) 728-9014 VP
Phone: (509) 452-9823 Voice
Phone: (509) 930-2012 Voice
Phone: (509) 966-9799 FAX
E-mail: garym@dawash.org
Website: www.dawash.org

Debbie Lasky-Fink, MA, LMHC, MA

Mental Health Counseling

20056 - 19th Ave. NE, Suite 104A
Shoreline, WA 98155
Phone: (425) 308-3693 Voice
E-mail: laskyfinkd@yahoo.com
Website: <http://debbielasky-fink.com/>

Dov Wills, LMHC

Private Practice: Fridays only
444 NE Ravenna
Seattle, WA
Phone: (206) 459-2879 V/TEXT
Phone: (206) 452-7981 VP
E-mail: dov.wills@gmail.com
Website: <https://therapists.psychologytoday.com/232452>

Jacqui Metzger, LICSW

Private Practice
2271 NE 51st Street
Seattle, WA 98105
Phone: (206) 522-8553 ext 228
Email: jacquimetzger@gmail.com

Melick Psychological Services, Amy Melick, Ph.D.

Private Practice
17220 - 127th Pl. NE, #300
Woodinville, WA 98072
Phone: (425) 985-5236 Voice/TTY
E-mail: drmelick@comcast.net

Melissa Wood Brewster, LICSW

Private Practice
753 N. 35th Street, Suite 102
Seattle, WA 98103
Phone: (206) 409-1266 Voice
E-mail: woodbrewster@gmail.com
Website: www.woodbrewster.com

North Sound Mental Health Administration – Island, San Juan, Skagit, Snohomish & Whatcom Counties

117 North First Street, Suite 8
Mount Vernon, WA 98273
Phone: (360) 416-7013 Voice
Phone: (800) 833-6384 TTY
Phone: (360) 416-7017 FAX
E-mail: margaret-rojes@nsmha.org
Website: www.nsmha.org

Salveo Counseling Center - Megan Erasmus

16150 NE 85th Street, Suite 120
Redmond, WA 98052
Phone: (425) 868-5777 Voice
E-mail: info@salveocounseling.com
Website: www.salveocounseling.com
Website: <http://www.salveocounseling.com/#!/megan-erasmus-therapist-in-redmond-wa/crnz>

Seattle Children’s Hospital – King County Department of Psychiatry, Deaf/Hard of Hearing Services

4800 Sand Point Way NE, W3636
Seattle, WA 98026
PO Box 5371
Seattle, WA 98105
Phone: (206) 987-2164 Voice
Phone: (206) 987-4885 Voice
Phone: (206) 526-2551 TTY
Phone: (206) 987-2246 FAX
E-mail: erika.miller@seattlechildrens.org
E-mail: psychintake@seattlechildrens.org
Website: www.seattlechildrens.org

Seattle Counseling Services

1216 Pine Street, Suite 300
Seattle, WA 98101
Phone: (206) 323-1768 Voice/TTY
Phone: (206) 323-2184 FAX
E-mail: info@seattlecounseling.org
Website: www.seattlecounseling.org

Sheryl E. Kool, MA, LMHC

Private Practice
13019 42nd Ave NE
Seattle, WA 98125
Phone: (206) 595-4017
E-mail: sheryl@thekools.org
Website: www.sherylkool.com

Sound Mental Health

Anne Baldwin, M.A., LMHC,

Deaf Services Program Manager
600 Broadway Suite 170
Seattle, WA 98122
Phone: (206) 455-7929 VP
Phone: (206) 302-2811 Voice
Phone: (206) 302-2600 Voice
Phone: (206) 302-2610 FAX
Email: DeafServices@smh.org
Email: anneb@smh.org
Website: www.smh.org/deaf-services

Wendy B. Marlowe, Ph.D., ABPP, Clinical Neuropsychologist

Private Practice
2150 N. 107th Street, Suite 250
Seattle, WA 98133
Phone: (206) 623-5217 Voice/TTY
Phone: (206) 623-2337 FAX
E-mail: wbmardlowe@comcast.net
Website: www.wendymarlowephd.com

Wilson Clinical Services, PLLC. Dr. Jaime A.B. Wilson, Ph.D.

Private Practice
1117 A Street
Tacoma, WA 98402
E-mail: wilson.clinical@gmail.com
Website: www.wilsonclinical.com

Other - Businesses

deaffriendly.com

Phone: (206) 397-8631 VP
E-mail: info@deaffriendly.com
Website: www.deaffriendly.com

Farmers Insurance Auto, Home and Life Insurance

Bryan Branson, Agent
3021 S. Regal, Suite 102
Spokane, WA 99223
Phone: (509) 315-2284 VP
Phone: (509) 535-4785 FAX
Phone: (509) 232-7367 TTY
E-mail: blbranson1@msn.com

Origami OWI Custom Jewelry

7711 Rainer Drive
Everett, WA 98203
Phone: (425) 442-4876 TEXT
E-mail: angelmobileg1@gmail.com
Website: www.angelcole.origamiowl.com

Turtle Heart Coaching & Retreats

3515 NE 43rd Street
Vancouver, WA 98661
Phone: (510) 344-5571 VP
E-mail: LaRondaZupp@gmail.com
Website: www.turtleheartretreats.com

Yakima Valley Hearing and Speech Center

303 South 12th Avenue
Yakima, WA 98902
Phone: (509) 453-8248
Phone: (509) 248-9012 FAX
E-mail: nancy1@hearingand-speechcenter.com

Windermere Real Estate

3900 E Valley Rd, Suite 200
Renton, WA 98057
Phone: (253) 632-3099
Phone: (425) 277-5900 Voice
E-mail: bethc@windermere.com
Website: <http://bethc.withwre.com/>

Recreation

Deaf Spotlight

PO Box 20191
Seattle, WA 98102
E-mail: deafspotlight@gmail.com
Website: www.deafspotlight.com

Metro Parks Tacoma

3873 S. 66th Street
Tacoma, WA 98409
Phone: (253) 759-9286 TTY
Phone: (253) 404-3951 Voice
E-mail: kdoty@tacomaparks.com
Website: www.metroparkstacoma.org

Seattle Parks and Recreation - Specialized Programs

100 Dexter Avenue North
Seattle, WA 98109
Phone: (206) 684-4950 Voice
Website: www.seattle.gov/parks/SpecialPops/index.htm

Washington State Accessible Outdoor Recreation Guide

1111 Israel Road S.W.
Olympia, WA 98504-2650
Phone: (360) 902-8659 Voice
E-mail: ada@parks.wa.gov
Website: <http://www.parks.wa.gov/ada-rec/>

Washington State Arts Commission (WSAC)

PO Box 42675
Olympia, WA 98504-2675
Phone: (360) 753-3860 Voice
Phone: (360) 586-5351 FAX
E-mail: info@arts.wa.gov
Website: www.arts.wa.gov

Washington State Department of Fish and Wildlife (DFW)

1111 Washington St. SE
Olympia, WA 98501
Phone: (360) 902-2200 Voice
Website: www.wdfw.wa.gov

Washington State Department of Natural Resources (DNR)

1111 Washington Street SE
Olympia, WA 98504-7000
Phone: (360) 902-1000 Voice
Website: www.dnr.wa.gov

Washington State Parks and Recreation Commission

Disability Pass Program
P.O. Box 42650
Olympia, WA 98504
Phone: (360) 664-3133 TTY
Phone: (360) 902-8500 Voice
Phone: (888) 226-7688 Voice
Phone: (360) 902-8844 Voice
Website: www.parks.wa.gov

Senior Citizens / Aging

Aging and Long-Term Support Administration (ALSA)

Blake Office Park West 4450 - 10th Ave. SE
Lacey, WA 98503
Phone: (800) 422-3263 Voice
Phone: (800) 422-7930 TTY
Phone: (360) 493-2637 TTY - Regional Office
Website: www.dshs.wa.gov/altsa

Washington State Deaf Senior Citizens (WSDSC)

PO Box 145
Lynden, WA 98264
Phone: (360) 707-7597 VP
E-mail: ellenscheppach@yahoo.com
E-Mail: vanscheppach@yahoo.com

Service Animals

Department of Corrections Washington Corrections Center for Women

Prison Pet Partnership Program (PPPP)

9601 Bujacich Rd. NW
Gig Harbor, WA 98332
Phone: (253) 858-4240 Voice
Phone: (253) 858-4202 FAX
E-mail: info@prisonpetpartnership.org
Website: www.prisonpetpartnership.org

Dogs for the Deaf, Inc.

10175 Wheeler Road
Central Point, OR 97502
Phone: (541) 826-9220 Voice/TTY
Phone: (541) 826-6696 FAX
E-mail: info@dogsforthedeaf.org
E-mail: Robin@dogsforthedeaf.org
Website: www.dogsforthedeaf.org

International Hearing Dog, Inc.

5901 E. 89th Ave.
Henderson, CO 80640
Phone: (267) 963-7153
E-mail: INFO@hearingdog.org
Website: www.hearingdog.org

Pet Partners (formerly Delta Society National Service Dog Center)

875 - 124th Avenue NE #101
Bellevue, WA 98005
Phone: (425) 679-5500 Voice
E-mail: info@petpartners.org
Website: www.petpartners.org

Summit Assistance Dogs

12549 Christianson Rd.
Anacortes, WA 98221
PO Box 699
Anacortes, WA 98221
Phone: (360) 293-5609 Voice
E-mail: info@summitdogs.org
Website: www.summitdogs.org

Sign Language

Washington American Sign Language Teachers Association (WA-ASLTA)

Website: <http://wa-aslta.org/index.html>

Colleges, universities and private classes listed below may provide sign language classes depending on the number of student enrollments. Please contact school or other classes for further information

Sign Language Classes at Community and Technical Colleges

Cascadia Community College

18345 Campus Way NE
Bothell, WA 98011
Phone: (425) 352-8000 Voice
Website: <http://www.cascadia.edu/Default.aspx>

Edmonds Community College

20000 - 68th Ave. West
Lynwood, WA 98036
Phone: (425) 640-1459 Voice
Website: <http://www.edcc.edu/priorlearning/course-descriptions/asl-course-descriptions.html>

Everett Community College

2000 Tower Street
Everett, WA 98201
Phone: (425) 388-9272 Voice
Phone: (425) 388-9100 Voice
Phone: (425) 388-9438 TTY
Phone: (425) 388-9109 TTY
E-mail: cds@everettcc.edu
Website: www.everettcc.edu/resources/cds/

Green River Community College

12401 SE 320th Street
Auburn, WA 98092
Phone: (253) 833-9111 Voice
Website: www.greenriver.edu

Highline Community College

2400 South 240th Street
Des Moines, WA 98198
Phone: (206) 878-3710 Voice
Website: www.highline.edu

Olympic Community College

1600 Chester Avenue
Bremerton, WA 98337
Phone: (360) 362-7054 VP
Phone: (360) 475-7543 TTY
Phone: (800) 259-6718 Voice
Phone: (360) 475-7540 Voice
Phone: (360) 475-7436 FAX
E-mail: melliott@oc.ctc.edu
Website: www.oc.ctc.edu

Renton Technical College

3000 NE 4th Street
Renton, WA 98056
Phone: (425) 235-2352 Voice
Website: www.rtc.edu

Seattle Central Community College

1701 Broadway
Seattle, WA 98122
Phone: (206) 344-4347 Voice
Phone: (206) 587-6337 FAX
Phone: (206) 587-3800 Voice
Website: www.seattlecentral.edu

Shoreline Community College

16101 Greenwood Ave. North
Seattle, WA 98133
Phone: (206) 546-4101 Voice
Phone: (206) 546-4520 TTY
Business/Intra-Americans Studies
Social/Science
Phone: (206) 546-4540
ASL Program
Phone: (206) 546-4647 TTY
Website: www.shoreline.edu

South Puget Sound Community College

2011 Mottman Rd SW
Olympia, WA 98512
Phone: (360) 339-7375 VP
E-mail: rbateh@spscc.ctc.edu
Website: www.spscc.ctc.edu
South Seattle Community College
6000 - 16th Avenue SW
Seattle, WA 98106
Phone: (800) 833-6388 TTY
Phone: (206) 934-5300 Voice
Website: www.southseattle.edu

Spokane Community College

1810 North Greene Street
Spokane, WA 99217
Phone: (509) 533-7000 Voice
Phone: (509) 533-7482 TTY
Institute for Extended Learning
Phone: (509) 279-6000 Voice
Website: www.scc.spokane.edu/

Spokane Falls Community College

3410 W. Fort George Wright Dr. -
MS 3011
Spokane, WA 99224-5288
Phone: (509) 533-3500 Voice
Phone: (888) 509-7944 Voice
Website: www.spokanefalls.edu

Whatcom Community College

237 West Kellogg Road
Bellingham, WA 98226
Phone: (360) 676-2170 Voice
Phone: (360) 647-3279 TTY
Website: www.whatcomcommunityed.com

Yakima Valley Community College

P.O. Box 22520
Yakima, WA 98907-2520
Phone: (509) 574-4600 Voice
Phone: (509) 574-4600 TTY
Website: www.yvcc.edu

Walla Walla Community College

500 Tausick Way
Walla Walla, WA 99362
Phone: (509) 522-2500 Voice
Website: <http://www.wvcc.edu/>
CMS/

Sign Language Classes at Colleges

Bellevue College

3000 Landerholm Circle SE
Bellevue, WA 98007
Phone: (425) 564-2498 Voice
Phone: (425) 564-4110 TTY
Phone: (425) 564-2289 Voice
Website: <http://bellevuecollege.edu/classes/Search?quarter=Fall2012&searchterm=American+Sign+Language&submit=Search>

Centralia College

600 Centralia College Blvd
Centralia, WA 98531
Phone: (360) 736-9391 Voice
Phone: (360) 753-3433
Phone: (360) 807-6227 TTY
Website: <http://www.centralia.edu/>

Clark College

1933 Fort Vancouver Way
Vancouver, WA 98663
Phone: (360) 699-6398 Voice
Website: www.clark.edu

Grays Harbor College

1620 Edward P. Smith Drive
Aberdeen, WA 98520
Phone: (360) 532-9020 Voice
Phone: (360) 538-4223 TTY
Website: www.ghc.ctc.edu

Pierce College

1601 39th Avenue. S.E.
Puyallup, WA 98374
Phone: (253) 840-8400 Voice
Phone: (253) 840-8321 FAX
E-mail: dssaccess@pierce.ctc.edu
E-mail: jstarr@pierce.ctc.edu
Website: www.pierce.ctc.edu

Skagit Valley College, Mount Vernon Campus

2405 East College Way
Mount Vernon, WA 98273
Phone: (360) 416-7600 Voice
Website: www.skagit.edu

Skagit Valley College - Whidbey Island Campus

1900 SE Pioneer Way
Oak Harbor, WA 98277
Phone: (360) 675-6656 Voice
Website: www.skagit.edu

Wenatchee Valley College

1300 Fifth Street
Wenatchee, WA 98801
Phone: (509) 682-6800 Voice
Phone: (509) 682-6837 TTY
Website: www.wvc.edu

Sign Language Classes at Universities

Central Washington University

LI Building
400 E. University Way
Ellensburg, WA 98926
Phone: (509) 963-1218 Voice
Website: www.cwu.edu

Eastern Washington University

526 5th Street
Cheney, WA 99004
Phone: (509) 359-6200 Voice
Registrar's Office
Phone: (509) 359-2321 Voice
Website: www.ewu.edu

Evergreen State College

2700 Evergreen Parkway NW
Olympia, WA 98505
Phone: (360) 867-6000 Voice
Website: www.evergreen.edu

Heritage University

3240 Fort Road
Toppenish, WA 99004
Phone: (888) 272-6190 Voice
Registrar's Office (509) 865-8509
Email: registrar@heritage.edu
Website: <http://www.heritage.edu/CampusLocations/Toppenish.aspx>

Pacific Lutheran University

12180 Park Avenue South
Tacoma, WA 98447
Phone: (253) 531-6900 Voice
Website: www.plu.edu

University of Washington

ASL Minor Program
Department of Linguistics
PO Box 352425
Seattle, WA 98195-2425
Phone: (206) 452-0085 Voice/VP
Phone: (206) 543-2046 Voice
Phone: (206) 685-7978 FAX
E-mail: lforshay@uw.edu
Website: <https://catalyst.uw.edu/workspace/lforshay/10514/233160>

Washington State University

Office of Admissions
370 Lighty Student Services Bldg.
P.O. Box 641067
Pullman, WA 99164-1067
Phone: (888) 468-6978 Voice
Website: www.wsu.edu

Private Sign Language Classes

Christine Seymour, Deaf and Hard of Hearing Specialist - CS-DHRS

10611 Canyon Rd E, #214
Puyallup, WA 98373
Phone: (253) 256-3938 VP
Phone: (253) 256-4690 Voice
E-mail: Christine@CS-DHRS.org
Website: <http://www.cs-dhhrs.org/index.html>

Hearing, Speech & Deafness Center (HSDC) - Bellingham

114 West Magnolia Street Suite 106

Bellingham, WA 98225

(866) 647-0910 Toll-free Voice

(877) 647-8508 Toll-free TTY

(360) 255-7167 Voice/VP

(360) 647-0910 Voice

(360) 647-8508 TTY

(360) 647-0923 FAX

E-mail: bellingham@hsrc.org

Website: www.hsrc.org

Hearing, Speech & Deafness Center (HSDC) - Seattle

1625 19th Avenue

Seattle, WA 98122

(888) 222-5036 Toll-free Voice

(800) 761-2821 Toll-free TTY

(206) 452-7953 Voice/VP

(206) 323-5770 Voice

(206) 388-1275 TTY

(206) 328-6871 Fax

E-mail: seattle@hsrc.org

Website: www.hsrc.org

Sign2Me Early Learning Resources

12125 Harbour Reach Drive, Suite D

Mukilteo, WA 98275

Phone: (425) 493-1903 Voice

Phone: (425) 493-1904 FAX

E-mail: acrain@sign2me.com

Website: <http://www.sign2me.com>

Southwest Washington Center of the Deaf and Hard of Hearing (SWCDHH) – Vancouver

301 SE. Hearthwood Blvd.

Vancouver, WA 98684

(360) 334-5740 Voice/VP

(360) 695-3364 Voice

(360) 695-9720 TTY

(360) 695-2706 FAX

E-mail: frontdesk@swcdhh.org

Website: www.swcdhh.org

Visually Speaking

320 E. Pine Street #317

Seattle, WA 98122

Phone: (323) 336-9305 Voice

E-mail: info@visuallyspeaking.info

E-mail: kellie@visuallyspeaking.info

Website: www.visuallyspeaking.info

info

Washington School for the Deaf (WSD)

611 Grand Boulevard
Vancouver, WA 98661
Phone: (800) 613-4228 Voice/TTY
Phone: (360) 696-6525 Voice/TTY
Phone: (360) 696-6291 Fax
Website: www.wsd.wa.gov

Telecommunications

Washington Relay Services

PO Box 45301
Olympia, WA 98504-5301
Phone: (360) 339-7382 VP
Phone: (360) 902-8000 Voice/TTY
Phone: (800) 422-7930 Voice/TTY
E-mail: askwashingtonrelay@dshs.wa.gov
Website: <https://www.dshs.wa.gov/altsa/odhh/telecommunication-relay-services>

Washington Utilities and Transportation Commission

1300 S. Evergreen Park Dr. SW
Olympia, WA 98504-7250
Phone: (360) 664-1160 Voice
Phone: (800) 562-6150 Voice
Phone: (800) 416-5289 TTY
E-mail: info@wutc.wa.gov
Website: www.wutc.wa.gov

Transportation

Department of Licensing (DOL)

PO Box 9030
Olympia, WA 98507
Phone: (360) 902-3900 Voice
Phone: (360) 664-0116 TTY
Website: <http://www.dol.wa.gov/>

Department of Transportation (DOT)

310 Maple Park Avenue SE
Olympia, WA 98501
PO Box 47310
Olympia, WA 98504-7310
Phone: (855) 362-4232 Voice
Phone: (360) 705-6849 FAX
E-mail: wsdotada@wsdot.wa.gov
E-mail: shawn.murinko@wsdot.wa.gov
Website: www.wsdot.wa.gov/accessibility

Washington State Patrol (WSP)

General Administration Building
PO Box 42600
Olympia, WA 98504
Phone: (360) 596-4000 Voice
Website: <http://www.wsp.wa.gov/>

Washington State Transportation Commission

PO Box 47308
Olympia, WA 98504
Phone: (360) 705-7070 Voice
Phone: (360) 705-6802 FAX
E-mail: transc@wsdot.wa.gov
Website: <http://www.wstc.wa.gov/>

