

### Telecommunication Relay Service (TRS)

Some specialized telecommunication equipment must be used with Relay. Relay is a free service that connects people who use specialized telephone devices to people who use a standard telephone, and vice versa.

- To use Relay, simply dial 7-1-1
- You will be connected to a Relay Operator (RO)
- The RO will dial the phone number being called and relay the conversation between both people.

### TED Demonstration Sites

We have a limited number of TED demonstration sites where you can test equipment to see what telecommunication equipment best meets your needs. Please check our website for current site locations which are housed at various Regional Service Centers.

The TED Program also provides equipment and services to people who have speech disabilities and limited mobility. Contact ODHH for more information.

### Other ODHH Programs include:

- Communication Access
- Community Technology
- Community Outreach
- Sign Language Interpreting Contracts & Resources
- Trainings and Presentations
- Social and Human Services *with* Regional Service Centers located in:
  - Bellingham
  - Seattle
  - Tacoma
  - Vancouver
  - Spokane
  - Tri-Cities
  - Yakima Valley Region

## Contact us

Department of Social and Health Services  
(DSHS)

Office of the Deaf and Hard of Hearing  
(ODHH)

PO Box 45301  
Olympia, WA 98504-5301

800-422-7930 Voice/TTY

360-725-3450 Voice/TTY

360-725-3455 TTY

360-339-7382 Videophone

360-725-3456 Fax

odhh@dshs.wa.gov Email

#### Website:

[www.dshs.wa.gov/altsa/office-deaf-and-hard-hearing](http://www.dshs.wa.gov/altsa/office-deaf-and-hard-hearing)

#### EndHarm

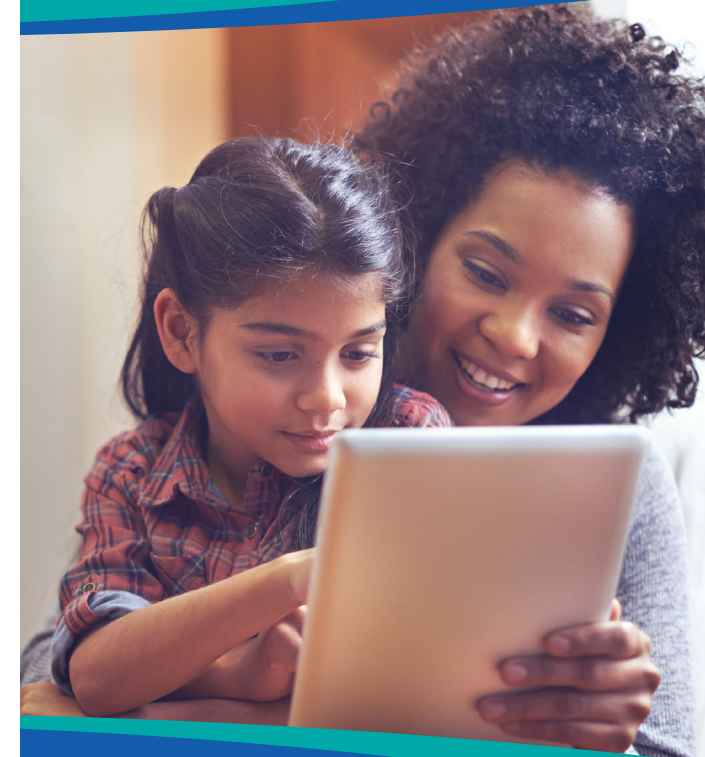
Report Abuse of Children and Vulnerable Adults  
1-866-END-HARM (866-363-4276)



Transforming lives

DSHS 22-051 (Rev. 8/17)

# Telecommunication Equipment Distribution Program



for people who are Deaf,  
DeafBlind, DeafPlus, Hard of  
Hearing, Speech Disabled and  
Late-Deafened

Aging and Long-Term Support Administration  
Office of the Deaf and Hard of Hearing



Transforming lives

**The Telecommunication Equipment Distribution (TED) Program provides telephone equipment to people who are Deaf, DeafBlind, DeafPlus, Hard of Hearing, Speech Disabled, and Late-Deafened so that they may access and use the telephone independently.**

The TED Program distributes many types of equipment, including amplified, braille, text, and captioned telephones. Other devices are available for people with special communication needs.

For DeafBlind individuals requesting DeafBlind Communicator (DBC), please contact ODHH for a copy of DBC application.

**Eligibility**

**You may qualify for TED services if you are:**

- Deaf
- DeafBlind
- DeafPlus
- Hard of Hearing
- Speech Disabled
- Late-Deafened

**You must also be:**

- A Washington State resident; and
- Age four (4) or older



**Application for Telecommunication Equipment**

You must submit a completed DSHS Form 14-264 Application for Telecommunication Equipment to get equipment from the TED Program.

The Application packet has all the information you will need to know about the TED Program and the process to get equipment. It also shows equipment types available.

**Get an Application**

- Contact ODHH and ask us to send you an Application in the mail; or
- Print the Application on our website: <https://www.dshs.wa.gov/altsa/oddh/telecommunications-equipment-distribution>

**To apply for equipment you must:**

- 1. Complete the Application for Telecommunication Equipment**
- 2. Have a professional, such as a doctor, audiologist, or Regional Service Center (RSC) staff sign the application**

For a complete list of certifying professionals, see DSHS Form 14-264 Application for Telecommunication Equipment.

- 3. Mail your completed Application for Telecommunication Equipment to the TED Program**

The TED Program will notify you by mail when your application is accepted.

**Training**

**Training is provided at no cost**

TED trainers will work with you to ensure that you get the best equipment to meet your needs. Trainers will set-up equipment and show you how to use it.

**Equipment Options**



Amplified Telephone



iPads



Text Telephone (TTY)

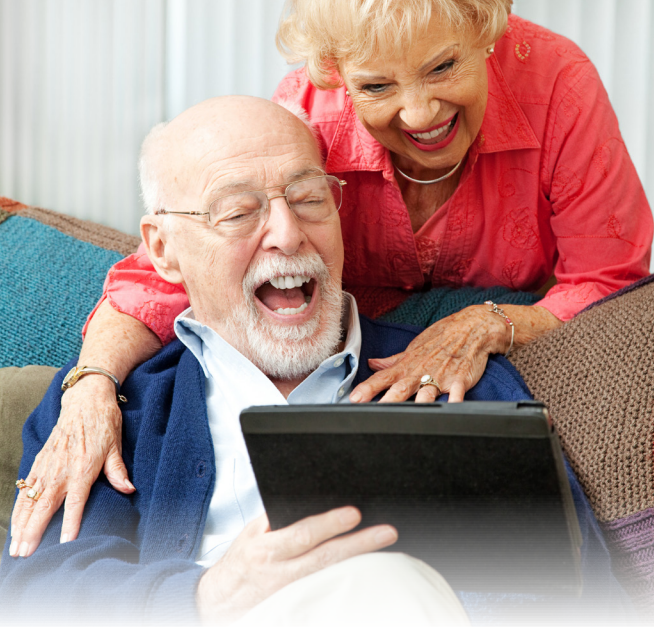


Captioned Telephone (CapTel)



Ring Signalers

*For more equipment options see DSHS Form 14-264 Application for Telecommunication Equipment.*



**About the TED Program Confidentiality**

We value client confidentiality. We follow strict DSHS guidelines to ensure that personal information is protected. All ODHH contractors, including TED Trainers, must also follow these policies.

*Legal Authority: Revised Code of Washington (RCW) 43.20A.720 Washington Administrative Code (WAC) 388-188*

**Funding**

The TED Program is funded through state funds.

**Equipment Cost**

**Clients may or may not have to pay for equipment**

Equipment cost is determined by a sliding scale that uses family size and income to calculate the amount you must pay, if any. The TED Program must receive payment before we can issue equipment. If you are required to pay, but cannot afford the cost, you may request a waiver. Contact the TED Program for more information about the waiver process.