

Charging Data

200 kW battery



Level 1 J1772 @ 1.5 kWh
3.5 miles of range in 60 minutes

Level 2 J1772 @ 7.5 kWh
28 miles of range in 60 minutes



Level 3 CCS1 @ 208 kWh
80% charge in 23 minutes

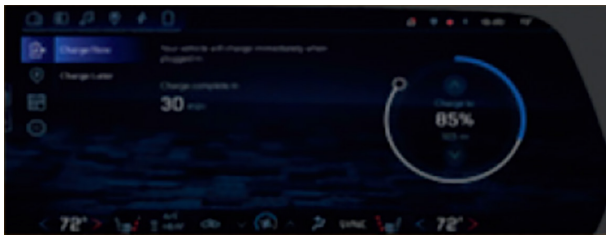
On the road, goal is 80% charge – the last 20% takes 2-3 times longer than the first 80%. Save the 100% for overnight charging.

Charging

When the propulsion battery is low, a charging message may display on the instrument cluster. Charge times will vary based on the battery condition, charge level and outside temperature. It is normal to hear fans, pumps and electrical devices clicking when the vehicle is turned off and charging.

Charging App

Touch the ⚡ Charging icon on the infotainment screen to open the Charging app. Select **NEXT CHARGE**, **CHARGE ASSIST**, **SCHEDULE** or **SETTINGS** tab to display the desired charging information.



NEXT CHARGE – Displays the current range and charging status. There are several programmable charging modes, including charging immediately upon plug-in or charging later based on departure time or target charge level. Cabin preconditioning also can be set to heat or cool the cabin. During an active charging session, the Charging screen continuously displays the vehicle's current charging status.

CHARGE ASSIST – Displays available charging station information, including options for Nearby, Favorites, Routes or Accounts.

SCHEDULE – Provides options for setting a charge level and a schedule for when to charge each day of the week at a Home Charge Location. With a schedule set, charging can occur during off-peak times at a lower cost.

SETTINGS – Enables custom settings for several features, including Home Charge Location; Notifications; Fast Charge Prep (for battery conditioning before using DC Fast Chargers); Preconditioning Temperature (cabin warming or cooling); and Preferred Charge Times.

Recommended Home Charging Station

Level 2 charging equipment with at least a 240-volt/48-amp rating will provide the fastest charging time to recharge the propulsion battery at a home location.

Target Charging Level

The target charge level sets the maximum level the battery will charge to when plugged in. It will be set to 80% when the vehicle is new. It's important to charge your battery to 80% for daily use. This helps promote battery health and optimal regenerative braking performance, which helps increase efficiency. For longer trips, adjust charging above 80% for extended range by sliding the indicator to the desired charge level. Slide the indicator back to 80% when additional charging is no longer needed.

Chevy Silverado



SILVERADO

Emergency Contact Phone Numbers

DES Vendor Maintenance
800-542-6840 / 866-329-3471

DES Fuel/Charge Card Questions
360-664-9215

CEI (Accident) Claims
877-443-5777

Roadside Assistance
800-542-6840

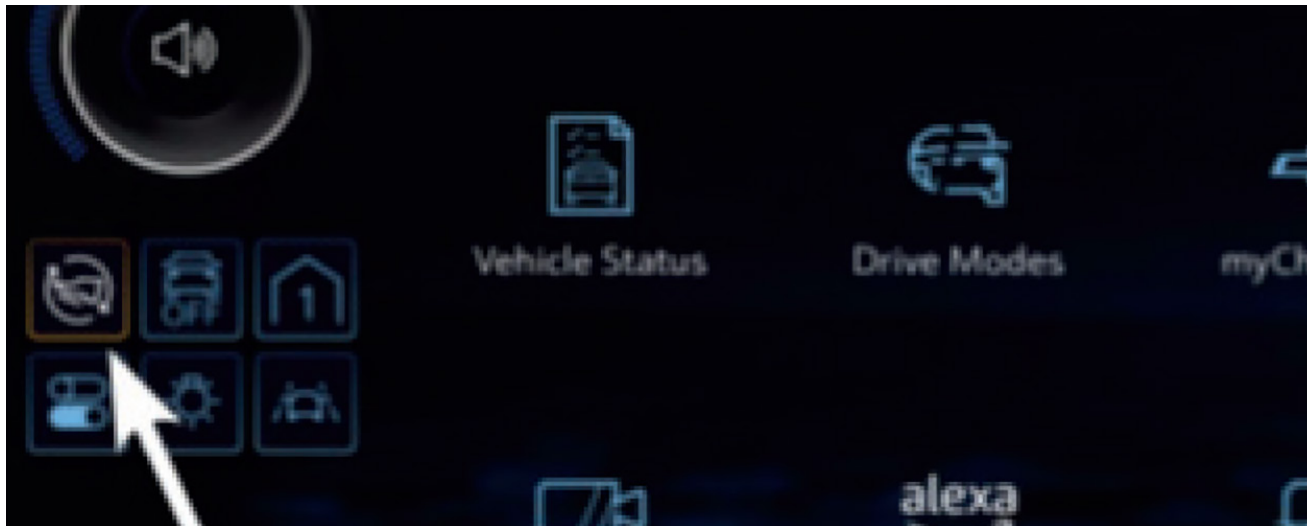


Transforming lives

DSHS 22-2012 (4/24)

One Pedal Driving

With One-Pedal Driving, the vehicle can be slowed or stopped under certain conditions using only the accelerator pedal, which can help maximize driving range while reducing the need to switch between the accelerator and brake pedals in heavy traffic. Compared to a traditional vehicle that begins to coast when not applying the accelerator pedal, One-Pedal Driving offers a higher rate of deceleration. When partially lifting off the accelerator pedal, the vehicle will decelerate. Completely releasing the accelerator pedal will result in aggressive deceleration. One-Pedal Driving does not operate in Reverse. Use the brake pedal for additional braking or emergency braking.



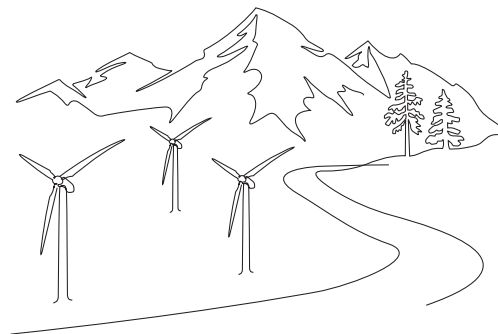
One Pedal Drive Indicators

To change the One-Pedal Driving settings, go to **Controls > Drive & Park > One-Pedal Driving**, or select **Drive Modes** on the infotainment screen.

Turning One Pedal Driving On or Off

To quickly turn One-Pedal Driving on or off, press the quick access button on the infotainment display.

Note: One-Pedal Driving may be limited when the propulsion battery is near full charge or cold.



Scan the QR code for the Chevy Silverado EV owner's manual.

Regenerative Braking

On Demand

Regenerative Braking on Demand (Regen on Demand) regenerates some energy from the vehicle's momentum and stores it in the propulsion battery for later use.

- To activate Regen on Demand, pull and hold the paddle on the back of the left side of the steering wheel. The vehicle will begin to decelerate. The paddle is pressure-sensitive, and the vehicle will continue to slow down the more the paddle is pulled; continue holding the paddle for greater regeneration.

Note: Regenerative braking may be limited when the propulsion battery is near full charge or cold.

Driving Efficiently

Maximizing Range

Here are a few tips on energy use and how to improve driving range:

Driving Technique

- Accelerate smoothly to help increase range. Rapid acceleration can drain battery energy more quickly.
- Use regenerative braking, which can help charge the battery, instead of making rapid stops.
- Drive at posted speed limits. Higher speeds use more energy and significantly reduce range.

Climate Settings

- The energy needed to warm or cool the vehicle's cabin and propulsion battery can cause range to decline. Turning off the Heat and A/C settings will increase efficiency.
- Maximize driving range by using remote start to heat or cool the interior when the vehicle is plugged in before driving.