

Behavioral Health Treatment Needs and Outcomes among Medicaid Enrolled Children in Washington State

Children Ages 0-20 Enrolled in Medicaid, SFY 2014 - SFY 2018

FEBRUARY 2021

This dashboard provides a snapshot of the behavioral health needs, characteristics, and outcomes of children and youth (age 0-20) on Medicaid in Washington State. Differences between behavioral health needs and outcomes of children and youth enrolled in Medicaid and those in foster care are also highlighted. This information can help to identify cross-system opportunities for behavioral health service delivery. Behavioral health (BH) needs include both mental health (MH) and substance use disorder (SUD) treatment (Tx) needs. Children with MH Tx need have at least one MH-related diagnosis, prescription, or treatment recorded in Washington State's Medicaid data system. Children with SUD Tx need have at least one substance use-related diagnosis, procedure, prescription, or treatment recorded in Washington State's Medicaid data system, or a substance use-related arrest recorded in other administrative data.

In Section 1 of this dashboard, rates of BH needs are compared across demographic categories, foster care status, Medicaid coverage type, cross-system involvement, region, and history of abuse and neglect. Consistent with research from other states, findings identify a substantially higher prevalence of behavioral health needs among children in foster care compared to children receiving publicly funded medical coverage more broadly (dosReis et al. 2001; Burns et al. 2004; Leslie et al. 2004; Braciszewski and Stout 2012; Havlicek, Garcia, and Smith 2013). Previous research has identified past exposure to adverse experiences — including factors such as economic deprivation, instability in living situation, family conflict, trauma and abuse — as contributing factors to foster children's greater BH needs, more frequent BH service utilization, and higher BH system costs (Hawkins, Catalano, and Miller 1992; Burns et al. 2004; Braciszewski and Stout 2012; Lucenko et al. 2012; Patton et al. 2018; Patton et al. 2019).

In Section 2 of this report, outcomes including BH Tx penetration and utilization, psychotropic polypharmacy, juvenile justice involvement, emergency department utilization, injury rates, and pregnancy are examined over time and compared between children in the general Washington State Medicaid population and those in foster care. Data are also stratified by specific BH needs and age groups.

The time period covered in this report includes Medicaid expansion (January 2014), a transition in diagnosis coding systems (ICD-9 to ICD-10 in October 2015), and the integration of behavioral and physical health in Medicaid contracting (starting in April 2016, and phased in by region). Trends we observe in this report may result from changes in the size and composition of the Medicaid population, changes in Medicaid contracting and delivery systems, and changes in the associated data systems, in addition to trends not linked to the system changes above.



Behavioral Health Treatment Needs and Outcomes among Medicaid Enrolled Children in Washington State

February 2021

CONTENTS

SECTION 1. Characteristics and Risk Factors

- [A](#) Population Reference Table, SFY 2014-2018
- [B](#) Indications of Mental Health Treatment Need, SFY 2018
- [C](#) Behavioral Health Treatment Needs of Medicaid Enrolled Children, by Gender and Age Group, SFY 2018
- [D](#) Behavioral Health Treatment Needs of Medicaid Enrolled Children, by Race/Ethnicity, SFY 2018
- [E](#) Behavioral Health Treatment Needs of Medicaid Enrolled Children, by Service Delivery System, SFY 2018
- [F](#) Behavioral Health Treatment Needs of Medicaid Enrolled Children, by Region, SFY 2018
- [G](#) Behavioral Health Treatment Needs of Medicaid Enrolled Children, by County, SFY 2018
- [H](#) Behavioral Health Treatment Needs of Medicaid Enrolled Children, by Abuse and Neglect History, SFY 2018

SECTION 2. Outcome Measures

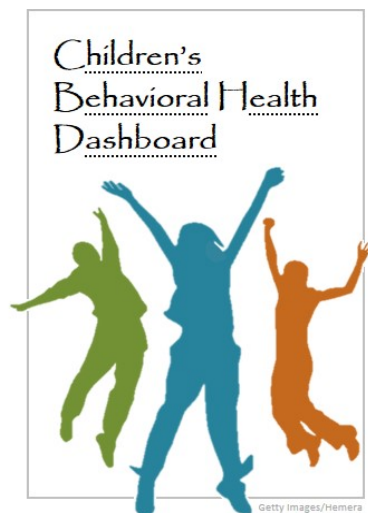
- [MEASURE 1](#) Treatment Penetration for Children with Mental Health Treatment Need
- [MEASURE 2](#) Treatment Penetration for Youth with Substance Use Disorder Treatment Need and Co-Occurring Treatment Need
- [MEASURE 3](#) Mental Health Crisis Services
- [MEASURE 4](#) Mental Health Inpatient Services
- [MEASURE 5](#) Psychotropic Polypharmacy
- [MEASURE 6](#) Involvement in Criminal Justice System
- [MEASURE 7](#) Emergency Department Utilization
- [MEASURE 8](#) Injuries
- [MEASURE 9](#) Teen Pregnancy

Notes and References

- [NOTES](#) Technical Notes
- [REFERENCES](#) References
- [LAST PAGE](#) Contributors and Acknowledgements

ACRONYMS

BH	Behavioral health (mental health and/or substance use)
BHO	Behavioral Health Organization, a managed care entity specific to behavioral health services
CLIP	Children's Long-term Inpatient mental health services
COD	Co-occurring disorder (both mental health and substance use disorder treatment needs)
CSTC	Child Study and Treatment Center, the state-run CLIP facility
DBHR	Division of Behavioral Health and Recovery, Health Care Authority
DCYF	Department of Children, Youth, and Families
DDA	Developmental Disability Administration, Department of Social and Health Services
DSHS	Department of Social and Health Services
ESA	Economic Services Administration, Department of Social and Health Services
HCA	Health Care Authority
ICD	International Classification of Diseases
ICDB	DSHS Integrated Client Databases
IMC	Integrated Managed Care
IP	Inpatient
MH	Mental health
RDA	Research and Data Analysis Division, Department of Social and Health Services
SCHIP	State Children's Health Insurance Program
SFY	State fiscal year (from July 1 of the previous calendar year through June 30 of the stated year)
SUD	Substance use disorder
TX	Treatment



SECTION 1

Characteristics and Risk Factors



Behavioral Health Treatment Needs and Outcomes among Medicaid Enrolled Children in Washington State

[Back to Contents](#)

February 2021

A. Population Reference Table, SFY 2014-2018

SFY 2014 - SFY 2018 • BEHAVIORAL HEALTH TREATMENT NEEDS (MEASURED IN CURRENT AND PREVIOUS SFY)

STATE FISCAL YEAR	ALL MEDICAID										IN FOSTER CARE									
	2014		2015		2016		2017		2018		2014		2015		2016		2017		2018	
	N	%	N	%	N	%	N	%	N	%	N	%	N	%	N	%	N	%	N	%
TOTAL PERSONS AGE 0 – 20	897,554	100%	937,581	100%	977,260	100%	998,091	100%	1,004,478	100%	15,270	100%	15,471	100%	15,568	100%	16,132	100%	16,159	100%
MH Tx need	150,403	17%	165,248	18%	179,923	18%	189,725	19%	201,365	20%	7,738	51%	7,835	51%	7,695	49%	7,906	49%	8,065	50%
SUD Tx need	21,006	2%	23,400	2%	25,020	3%	24,356	2%	22,658	2%	1,007	7%	1,004	6%	981	6%	927	6%	884	5%
Co-occurring Tx need (MH + SUD)	13,204	1%	15,046	2%	16,526	2%	16,397	2%	15,812	2%	912	6%	927	6%	888	6%	841	5%	791	5%
No known BH Tx need	739,349	82%	763,979	81%	788,843	81%	800,407	80%	796,267	79%	7,437	49%	7,559	49%	7,780	50%	8,140	50%	8,001	50%
PERSONS AGE 0 – 4	285,949	100%	287,836	100%	295,725	100%	298,270	100%	296,470	100%	6,846	100%	6,804	100%	6,913	100%	7,214	100%	7,196	100%
MH Tx need	13,103	5%	13,385	5%	13,884	5%	13,859	5%	14,971	5%	1,406	21%	1,362	20%	1,292	19%	1,338	19%	1,439	20%
No known BH Tx need	272,846	95%	274,451	95%	281,841	95%	284,411	95%	281,499	95%	5,440	79%	5,442	80%	5,621	81%	5,876	81%	5,757	80%
PERSONS AGE 5 – 11	316,464	100%	327,045	100%	341,309	100%	350,101	100%	353,638	100%	4,739	100%	4,913	100%	4,936	100%	5,107	100%	5,074	100%
MH Tx need	57,137	18%	60,009	18%	63,910	19%	67,020	19%	70,769	20%	3,338	70%	3,445	70%	3,453	70%	3,560	70%	3,581	71%
No known BH Tx need	259,327	82%	267,036	82%	277,399	81%	283,081	81%	282,869	80%	1,401	30%	1,468	30%	1,483	30%	1,547	30%	1,493	29%
PERSONS AGE 12 – 17	225,409	100%	232,928	100%	242,899	100%	250,576	100%	255,497	100%	3,385	100%	3,346	100%	3,216	100%	3,222	100%	3,258	100%
MH Tx need	61,633	27%	66,718	29%	72,565	30%	76,762	31%	82,037	32%	2,764	82%	2,737	82%	2,596	81%	2,591	80%	2,604	80%
SUD Tx need	13,836	6%	13,820	6%	14,136	6%	13,332	5%	12,486	5%	934	28%	894	27%	863	27%	772	24%	721	22%
Co-occurring Tx need (MH + SUD)	9,017	4%	9,384	4%	9,742	4%	9,304	4%	8,997	4%	850	25%	837	25%	789	25%	709	22%	661	20%
No known BH Tx need	158,957	71%	161,774	69%	165,940	68%	169,786	68%	169,971	67%	537	16%	552	16%	546	17%	568	18%	594	18%
PERSONS AGE 18 – 20	69,732	100%	89,772	100%	97,327	100%	99,144	100%	98,873	100%	300	100%	408	100%	503	100%	589	100%	631	100%
MH Tx need	18,530	27%	25,136	28%	29,564	30%	32,084	32%	33,588	34%	230	77%	291	71%	354	70%	417	71%	441	70%
SUD Tx need	7,170	10%	9,580	11%	10,884	11%	11,024	11%	10,172	10%	73	24%	110	27%	118	23%	155	26%	163	26%
Co-occurring Tx need (MH + SUD)	4,187	6%	5,662	6%	6,784	7%	7,093	7%	6,815	7%	62	21%	90	22%	99	20%	132	22%	130	21%
No known BH Tx need	48,219	69%	60,718	68%	63,663	65%	63,129	64%	61,928	63%	59	20%	97	24%	130	26%	149	25%	157	25%

SOURCE & POPULATION: DSHS Integrated Client Databases. All children and youth with Medicaid coverage (includes SCHIP) in SFY and a subset of children and youth ever in foster care in SFY.

DEFINITIONS: Number and proportion of Medicaid enrolled children who have MH Tx need, SUD Tx need, or COD Tx need (MH + SUD) and no known BH Tx need in the current or previous SFY. Children with MH Tx need have a MH-related diagnosis, procedure, prescription, or treatment in the current or previous SFY. Children with SUD Tx need have at least one substance-related diagnosis, procedure, prescription, treatment, or arrest in the current or previous SFY in state administrative data. Children with COD Tx need have indications of both MH Tx need and SUD Tx need in the same two-year time window, but not necessarily overlapping in the same month or year in state administrative data. As SUD Tx need is rare before adolescence, SUD and COD Tx needs are not measured for children under age 12. Children with no known BH Tx need are children with neither a MH Tx need nor a SUD Tx need present during the 24-month period. See technical notes for additional detail.



Behavioral Health Treatment Needs and Outcomes among Medicaid Enrolled Children in Washington State

[Back to Contents](#)

February 2021

B. Indications of Mental Health Treatment Need, SFY 2018

SFY 2018 • Age 0-20

	ALL MEDICAID AGE 0-20								IN FOSTER CARE AGE 0-20							
	All		MH Tx Need		SUD Tx Need		Co-occurring Tx Need		All		MH Tx Need		SUD Tx Need		Co-occurring Tx Need	
	N	%	N	%	N	%	N	%	N	%	N	%	N	%	N	%
SFY 2018 Total	1,004,478	100%	201,365	100%	22,658	100%	15,812	100%	16,159	100%	8,065	100%	884	100%	791	100%
Included in MH Tx Need Concept																
Mental Health Diagnoses	156,581	16%	156,581	78%	12,818	57%	12,818	81%	7,059	44%	7,059	88%	710	80%	710	90%
Psychotic disorder	3,133	<1%	3,133	2%	1,253	6%	1,253	8%	228	1%	228	3%	88	10%	88	11%
Mania or bipolar disorder	3,597	<1%	3,597	2%	1,208	5%	1,208	8%	169	1%	169	2%	76	9%	76	10%
Depression	47,540	5%	47,540	24%	7,527	33%	7,527	48%	1,704	11%	1,704	21%	446	50%	446	56%
Anxiety	66,277	7%	66,277	33%	7,350	32%	7,350	46%	3,659	23%	3,659	45%	470	53%	470	59%
ADHD	43,694	4%	43,694	22%	2,538	11%	2,538	16%	1,835	11%	1,835	23%	202	23%	202	26%
Disruptive/impulse/conduct disorder	19,423	2%	19,423	10%	1,422	6%	1,422	9%	1,333	8%	1,333	17%	153	17%	153	19%
Adjustment disorder	24,445	2%	24,445	12%	1,330	6%	1,330	8%	2,621	16%	2,621	32%	140	16%	140	18%
Mental Health Prescriptions Filled	75,121	7%	75,121	37%	7,619	34%	7,619	48%	2,497	15%	2,497	31%	434	49%	434	55%
Antipsychotic medications	9,872	1%	9,872	5%	2,177	10%	2,177	14%	573	4%	573	7%	152	17%	152	19%
Antimania medications	714	<1%	714	<1%	226	1%	226	1%	47	<1%	47	<1%	16	2%	16	2%
Antidepressants	34,973	3%	34,973	17%	5,255	23%	5,255	33%	1,225	8%	1,225	15%	318	36%	318	40%
Antianxiety medications	18,742	2%	18,742	9%	3,094	14%	3,094	20%	638	4%	638	8%	185	21%	185	23%
ADHD medications	36,354	4%	36,354	18%	1,778	8%	1,778	11%	1,392	9%	1,392	17%	127	14%	127	16%
Mental Health Services	122,886	12%	122,886	61%	10,287	45%	10,287	65%	6,604	41%	6,604	82%	654	74%	654	83%
MH Outpatient Services	122,654	12%	122,654	61%	10,231	45%	10,231	65%	6,460	40%	6,460	80%	625	71%	625	79%
MH Inpatient Services	2,752	<1%	2,752	1%	1,212	5%	1,212	8%	260	2%	260	3%	104	12%	104	13%
DCYF Behavioral Rehabilitation Services	954	<1%	954	<1%	225	1%	225	1%	911	6%	911	11%	218	25%	218	28%
Not Included in MH Tx Need Concept																
Behavioral Health Diagnoses	114,801	11%	63,280	31%	16,319	72%	12,196	77%	5,929	37%	3,514	44%	725	82%	669	85%
Alcohol Use	5,578	1%	4,122	2%	5,045	22%	3,789	24%	431	3%	351	4%	279	32%	265	34%
Drug Use	14,750	1%	9,641	5%	12,402	55%	9,320	59%	1,388	9%	573	7%	553	63%	511	65%
Nicotine Use	10,986	1%	7,564	4%	5,188	23%	4,216	27%	386	2%	348	4%	263	30%	246	31%
Developmental Disorder	47,798	5%	18,389	9%	494	2%	463	3%	2,718	17%	1,229	15%	44	5%	43	5%
Pervasive Developmental Disorder	18,272	2%	11,497	6%	305	1%	296	2%	504	3%	372	5%	27	3%	27	3%
Autism Spectrum Disorder	13,776	1%	9,950	5%	265	1%	260	2%	403	2%	327	4%	24	3%	24	3%
Sleep Disorder	26,107	3%	16,526	8%	1,938	9%	1,855	12%	1,105	7%	865	11%	138	16%	137	17%
Eating Disorder	2,751	<1%	1,838	1%	234	1%	231	1%	118	1%	87	1%	20	2%	20	3%
Other Mental Health Diagnoses	25,715	3%	22,476	11%	3,793	17%	3,552	22%	1,739	11%	1,636	20%	263	30%	258	33%

SOURCE & POPULATION: DSHS Integrated Client Databases. All children and youth with Medicaid coverage (includes SCHIP) and a subset of children and youth ever in foster care in SFY 2018.

NOTES: Children with MH Tx Need have at least one indication (diagnosis, procedure, prescription, treatment) in a 2-year period (SFY 2017-SFY 2018). Detail is shown only for indications that occur in SFY 2018. Autism spectrum disorder falls within broader category of pervasive Developmental Disorder disorder. Other mental health diagnoses include factitious, dissociative/conversion, personality disorder, gender dysphoria, and miscellaneous diagnoses. *To protect individual privacy, cells in this data product that represent 10 or fewer persons are not displayed. **Some additional cells with n>10 have been suppressed to ensure that cells with small numbers cannot be recalculated.

SFY 2018 PERSONS AGE 0-4, AGE 5-11	ALL MEDICAID AGE 0-4				IN FOSTER CARE AGE 0-4				ALL MEDICAID AGE 5-11				IN FOSTER CARE AGE 5-11			
	All		MH Tx Need		All		MH Tx Need		All		MH Tx Need		All		MH Tx Need	
	N	%	N	%	N	%	N	%	N	%	N	%	N	%	N	%
SFY 2018 Total	296,470	100%	14,971	100%	7,196	100%	1,439	100%	353,638	100%	70,769	100%	5074	100%	3,581	100%
Included in MH Tx Need Concept																
Mental Health Diagnoses	11,129	4%	11,129	74%	1,222	17%	1,222	85%	56,230	16%	56,230	79%	3,200	63%	3,200	89%
Psychotic disorder	33	<1%	33	<1%	*	*	*	*	283	<1%	283	<1%	**	**	**	**
Mania or bipolar disorder	12	<1%	12	<1%	*	*	*	*	251	<1%	251	<1%	**	**	**	**
Depression	246	<1%	246	2%	32	<1%	32	2%	7,869	2%	7,869	11%	385	8%	385	11%
Anxiety	2,884	1%	2,884	19%	416	6%	416	29%	20,004	6%	20,004	28%	1,655	33%	1,655	46%
ADHD	1,520	1%	1,520	10%	121	2%	121	8%	23,344	7%	23,344	33%	1,026	20%	1,026	29%
Disruptive/impulse/conduct disorder	2,897	1%	2,897	19%	253	4%	253	18%	10,443	3%	10,443	15%	642	13%	642	18%
Adjustment disorder	2,205	1%	2,205	15%	520	7%	520	36%	12,082	3%	12,082	17%	1,463	29%	1,463	41%
Mental Health Prescriptions Filled	1,724	1%	1,724	12%	103	1%	103	7%	24,000	7%	24,000	34%	996	20%	996	28%
Antipsychotic medications	93	<1%	93	1%	11	<1%	11	1%	2,228	1%	2,228	3%	169	3%	169	5%
Antimania medications	0	0%	0	0%	0	0%	0	0%	49	<1%	49	<1%	*	*	*	*
Antidepressants	89	<1%	89	1%	*	*	*	*	4,940	1%	4,940	7%	**	**	**	**
Antianxiety medications	1,266	<1%	1,266	8%	63	1%	63	4%	3,207	1%	3,207	5%	132	3%	132	4%
ADHD medications	390	<1%	390	3%	34	0%	34	2%	19,304	5%	19,304	27%	829	16%	829	23%
Mental Health Services	7,526	3%	7,526	50%	1,069	15%	1,069	74%	47,727	13%	47,727	67%	3,093	61%	3,093	86%
MH Outpatient Services	7,504	3%	7,504	50%	1,049	15%	1,049	73%	47,690	13%	47,690	67%	3,072	61%	3,072	86%
MH Inpatient Services	*	*	*	*	*	*	*	*	**	**	**	**	**	**	**	**
DCYF Behavioral Rehabilitation Services	29	<1%	29	<1%	27	<1%	27	2%	328	<1%	328	<1%	308	6%	308	9%
Not Included in MH Tx Need Concept																
Behavioral Health Diagnoses	33,699	11%	6,303	42%	2,891	40%	741	51%	32,113	9%	20,038	28%	1,448	29%	1,289	36%
Alcohol Use	210	<1%	69	0%	104	1.4%	40	3%	323	<1%	264	<1%	48	1%	46	1%
Drug Use	2,076	1%	123	1%	816	11%	48	3%	272	<1%	198	<1%	19	<1%	14	<1%
Nicotine Use	93	<1%	14	<1%	*	*	*	*	97	<1%	50	<1%	*	*	*	*
Developmental Disorder	25,273	9%	4,669	31%	1,924	27%	545	38%	15,157	4%	8,550	12%	548	11%	451	13%
Pervasive Developmental Disorder	3,520	1%	1,579	11%	157	2%	75	5%	7,651	2%	4,828	7%	182	4%	142	4%
Autism Spectrum Disorder	2,458	1%	1,414	9%	103	1%	63	4%	6,168	2%	4,320	6%	156	3%	123	3%
Sleep Disorder	5,703	2%	1,418	9%	362	5%	160	11%	8,693	2%	5,412	8%	325	6%	300	8%
Eating Disorder	801	<1%	186	1%	43	1%	15	1%	569	<1%	402	1%	21	<1%	19	1%
Other Mental Health Diagnoses	2,183	1%	1,110	7%	244	3%	190	13%	8,891	3%	7,631	11%	782	15%	747	21%

SOURCE & POPULATION: DSHS Integrated Client Databases. All children and youth with Medicaid coverage (includes SCHIP) and a subset of children and youth ever in foster care in SFY 2018. NOTES: Children with a MH Tx Need have at least one indication (diagnosis, procedure, prescription, treatment) in a two-year period (SFY 2017-SFY 2018). Detail is shown here only for indications that occur in SFY 2018. Autism spectrum disorder falls within broader category of pervasive Developmental Disorder disorder. Other mental health diagnoses include factitious, dissociative/conversion, personality disorder, gender dysphoria, and miscellaneous diagnoses. *In order to protect the privacy of individuals, cells in this data product that represent 10 or fewer persons are not displayed. **Some additional cells with n>10 have been suppressed to ensure that cells with small numbers cannot be recalculated.

SFY 2018 PERSONS AGE 12-17	ALL MEDICAID AGE 12-17								IN FOSTER CARE AGE 12-17							
	All		MH Tx Need		SUD Tx Need		Co-occurring Tx Need		All		MH Tx Need		SUD Tx Need		Co-occurring Tx Need	
	N	%	N	%	N	%	N	%	N	%	N	%	N	%	N	%
SFY 2018 Total	255,497	100%	82,037	100%	12,486	100%	8,997	100%	3,258	100%	2,604	100%	721	100%	661	100%
Included in MH Tx Need Concept																
Mental Health Diagnoses	64,723	25%	64,723	79%	7,513	60%	7,513	84%	2,312	71%	2,312	89%	609	84%	609	92%
Psychotic disorder	1,316	1%	1,316	2%	509	4%	509	6%	145	4%	145	6%	71	10%	71	11%
Mania or bipolar disorder	1,628	1%	1,628	2%	500	4%	500	6%	111	3%	111	4%	56	8%	56	8%
Depression	27,838	11%	27,838	34%	4,546	36%	4,546	51%	1,111	34%	1,111	43%	384	53%	384	58%
Anxiety	29,951	12%	29,951	37%	4,193	34%	4,193	47%	1,389	43%	1,389	53%	407	56%	407	62%
ADHD	15,685	6%	15,685	19%	1,816	15%	1,816	20%	629	19%	629	24%	183	25%	183	28%
Disruptive/impulse/conduct disorder	5,348	2%	5,348	7%	1,179	9%	1,179	13%	409	13%	409	16%	**	**	**	**
Adjustment disorder	8,523	3%	8,523	10%	971	8%	971	11%	615	19%	615	24%	**	**	**	**
Mental Health Prescriptions Filled	33,798	13%	33,798	41%	4,278	34%	4,278	48%	1,196	37%	1,196	46%	367	51%	367	56%
Antipsychotic medications	4,550	2%	4,550	6%	1,074	9%	1,074	12%	322	10%	322	12%	130	18%	130	20%
Antimania medications	383	<1%	383	<1%	111	1%	111	1%	33	1%	33	1%	**	**	**	**
Antidepressants	19,125	7%	19,125	23%	3,006	24%	3,006	33%	801	25%	801	31%	274	38%	274	41%
Antianxiety medications	8,534	3%	8,534	10%	1,517	12%	1,517	17%	353	11%	353	14%	150	21%	150	23%
ADHD medications	14,152	6%	14,152	17%	1,382	11%	1,382	15%	489	15%	489	19%	**	**	**	**
Mental Health Services	51,459	20%	51,459	63%	6,442	52%	6,442	72%	2,188	67%	2,188	84%	579	80%	579	88%
MH Outpatient Services	51,331	20%	51,331	63%	6,405	51%	6,405	71%	2,091	64%	2,091	80%	550	76%	550	83%
MH Inpatient Services	1,734	1%	1,734	2%	726	6%	726	8%	183	6%	183	7%	93	13%	93	14%
DCYF Behavioral Rehabilitation Services	571	<1%	571	1%	**	**	**	**	550	17%	550	21%	**	**	**	**
Not Included in MH Tx Need Concept																
Behavioral Health Diagnoses	31,165	12%	24,261	30%	9,295	74%	7,037	78%	1,327	41%	1,258	48%	598	83%	559	85%
Alcohol Use	3,010	1%	2,333	3%	3,010	24%	2,333	26%	242	7%	232	9%	242	34%	232	35%
Drug Use	7,321	3%	5,525	7%	7,321	59%	5,525	61%	471	14%	439	17%	471	65%	439	66%
Nicotine Use	3,335	1%	2,572	3%	1,846	15%	1,590	18%	255	8%	242	9%	188	26%	179	27%
Developmental Disorder	5,406	2%	3,847	5%	338	3%	317	4%	195	6%	188	7%	**	**	**	**
Pervasive Developmental Disorder	4,966	2%	3,620	4%	196	2%	192	2%	134	4%	128	5%	**	**	**	**
Autism Spectrum Disorder	3,777	1%	3,093	4%	169	1%	168	2%	120	4%	118	5%	**	**	**	**
Sleep Disorder	8,386	3%	6,840	8%	1,194	10%	1,152	13%	370	11%	359	14%	119	17%	118	18%
Eating Disorder	1,039	<1%	930	1%	156	1%	154	2%	**	**	**	**	**	**	**	**
Other Mental Health Diagnoses	10,376	4%	9,736	12%	2,243	18%	2,088	23%	627	19%	617	24%	223	31%	220	33%

SOURCE & POPULATION: DSHS Integrated Client Databases. All children and youth with Medicaid coverage (includes SCHIP) and a subset of children and youth ever in foster care in SFY 2018. NOTES: Children with a MH Tx Need have at least one indication (diagnosis, procedure, prescription, treatment) in a two-year period (SFY 2017-SFY 2018). Detail is shown here only for indications that occur in SFY 2018. Autism spectrum disorder falls within broader category of pervasive Developmental Disorder disorder. Other mental health diagnoses include factitious, dissociative/conversion, personality disorder, gender dysphoria, and miscellaneous diagnoses. *In order to protect the privacy of individuals, cells in this data product that represent 10 or fewer persons are not displayed. **Some additional cells with n>10 have been suppressed to ensure that cells with small numbers cannot be recalculated.

SFY 2018 PERSONS AGE 18-20	ALL MEDICAID AGE 18-20								IN FOSTER CARE AGE 18-20							
	All		MH Tx Need		SUD Tx Need		Co-occurring Tx Need		All		MH Tx Need		SUD Tx Need		Co-occurring Tx Need	
	N	%	N	%	N	%	N	%	N	%	N	%	N	%	N	%
SFY 2018 Total	98,873	100%	33,588	100%	10,172	100%	6,815	100%	631	100%	441	100%	163	100%	130	100%
Included in MH Tx Need Concept																
Mental Health Diagnoses	24,499	25%	24,499	73%	5,305	52%	5,305	78%	325	52%	325	74%	101	62%	101	78%
Psychotic disorder	1,501	2%	1,501	4%	744	7%	744	11%	33	5%	33	7%	17	10%	17	13%
Mania or bipolar disorder	1,706	2%	1,706	5%	708	7%	708	10%	39	6%	39	9%	20	12%	20	15%
Depression	11,587	12%	11,587	34%	2,981	29%	2,981	44%	176	28%	176	40%	62	38%	62	48%
Anxiety	13,438	14%	13,438	40%	3,157	31%	3,157	46%	199	32%	199	45%	63	39%	63	48%
ADHD	3,145	3%	3,145	9%	722	7%	722	11%	59	9%	59	13%	19	12%	19	15%
Disruptive/impulse/conduct disorder	735	1%	735	2%	243	2%	243	4%	29	5%	29	7%	*	*	*	*
Adjustment disorder	1,635	2%	1,635	5%	359	4%	359	5%	23	4%	23	5%	*	*	*	*
Mental Health Prescriptions Filled	15,599	16%	15,599	46%	3,341	33%	3,341	49%	202	32%	202	46%	67	41%	67	52%
Antipsychotic medications	3,001	3%	3,001	9%	1,103	11%	1,103	16%	71	11%	71	16%	22	13%	22	17%
Antimania medications	282	<1%	282	1%	115	1%	115	2%	*	*	*	*	*	*	*	*
Antidepressants	10,819	11%	10,819	32%	2,249	22%	2,249	33%	138	22%	138	31%	44	27%	44	34%
Antianxiety medications	5,735	6%	5,735	17%	1,577	16%	1,577	23%	90	14%	90	20%	35	21%	35	27%
ADHD medications	2,508	3%	2,508	7%	396	4%	396	6%	40	6%	40	9%	*	*	*	*
Mental Health Services	16,174	16%	16,174	48%	3,845	38%	3,845	56%	254	40%	254	58%	75	46%	75	58%
MH Outpatient Services	16,129	16%	16,129	48%	3,826	38%	3,826	56%	248	39%	248	56%	75	46%	75	58%
MH Inpatient Services	759	1%	759	2%	486	5%	486	7%	22	3%	22	5%	11	7%	11	8%
DCYF Behavioral Rehabilitation Services	26	<1%	26	<1%	*	*	*	*	26	4%	26	6%	*	*	*	*
Not Included in MH Tx Need Concept																
Behavioral Health Diagnoses	17,824	18%	12,678	38%	7,024	69%	5,159	76%	263	42%	226	51%	127	78%	110	85%
Alcohol Use	2,035	2%	1,456	4%	2,035	20%	1,456	21%	37	6%	33	7%	37	23%	33	25%
Drug Use	5,081	5%	3,795	11%	5,081	50%	3,795	56%	82	13%	72	16%	82	50%	72	55%
Nicotine Use	7,461	8%	4,928	15%	3,342	33%	2,626	39%	121	19%	100	23%	75	46%	67	52%
Developmental Disorder	1,962	2%	1,323	4%	156	2%	146	2%	51	8%	45	10%	*	*	*	*
Pervasive Developmental Disorder	2,135	2%	1,470	4%	109	1%	104	2%	31	5%	27	6%	*	*	*	*
Autism Spectrum Disorder	1,373	1%	1,123	3%	96	1%	92	1%	24	4%	23	5%	*	*	*	*
Sleep Disorder	3,325	3%	2,856	9%	744	7%	703	10%	48	8%	46	10%	19	12%	19	15%
Eating Disorder	342	<1%	320	1%	78	1%	77	1%	*	*	*	*	*	*	*	*
Other Mental Health Diagnoses	4,265	4%	3,999	12%	1,550	15%	1,464	21%	86	14%	82	19%	40	25%	38	29%

SOURCE & POPULATION: DSHS Integrated Client Databases. All children and youth with Medicaid coverage (includes SCHIP) and a subset of children and youth ever in foster care in SFY 2018. NOTES: Children with a MH Tx Need have at least one indication (diagnosis, procedure, prescription, treatment) in a two-year period (SFY 2017-SFY 2018). Detail is shown here only for indications that occur in SFY 2018. Autism spectrum disorder falls within broader category of Pervasive Developmental Disorder disorder. Other mental health diagnoses include factitious, dissociative/conversion, personality disorder, gender dysphoria, and miscellaneous diagnoses. *In order to protect the privacy of individuals, cells in this data product that represent 10 or fewer persons are not displayed. **Some additional cells with n>10 have been suppressed to ensure that cells with small numbers cannot be recalculated.



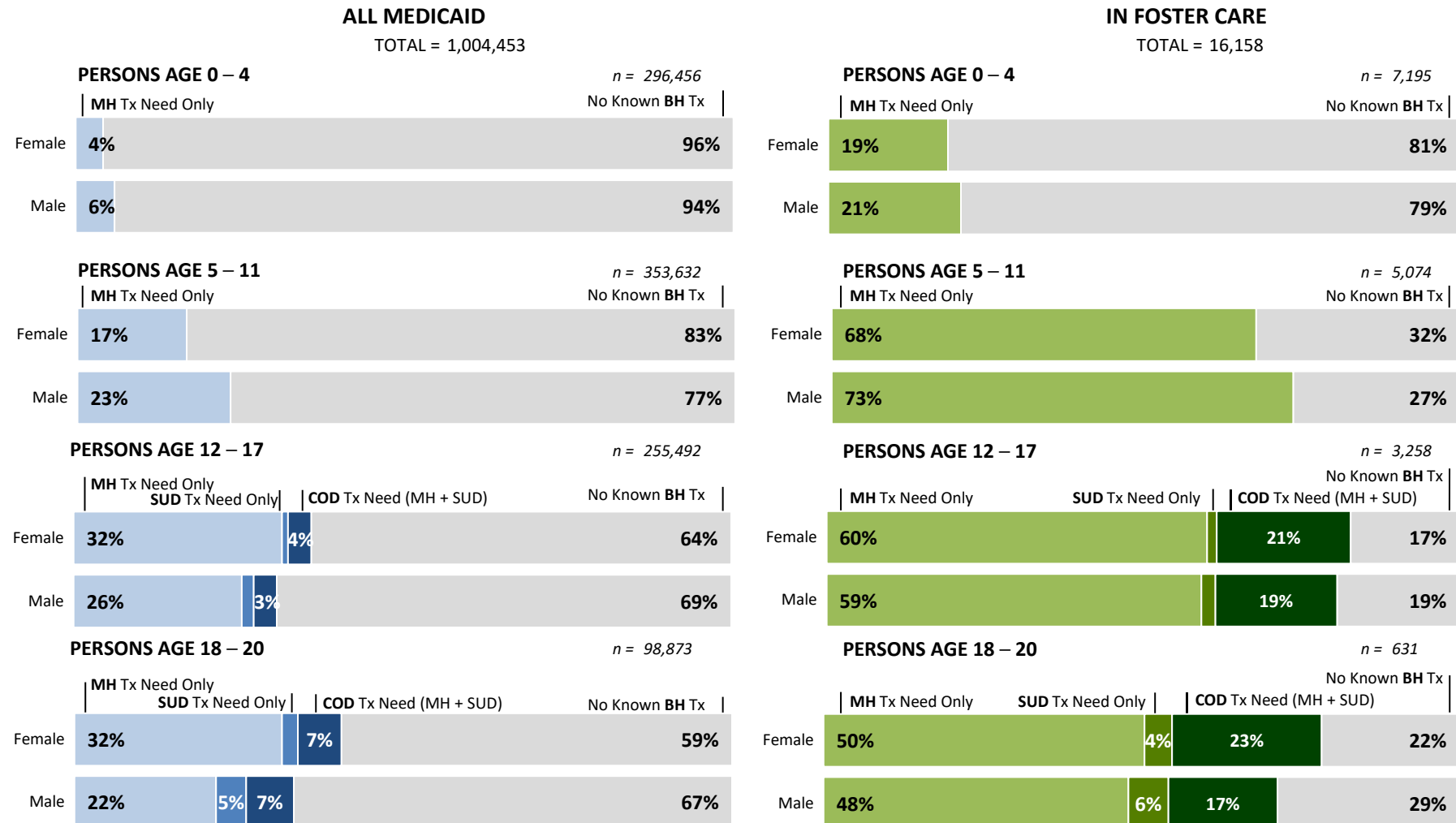
Behavioral Health Treatment Needs and Outcomes among Medicaid Enrolled Children in Washington State

[Back to Contents](#)

February 2021

C. Behavioral Health Treatment Needs of Medicaid Enrolled Children, by Gender and Age Group, SFY 2018

SFY 2018 COHORT • BEHAVIORAL HEALTH TREATMENT NEEDS BY GENDER (MEASURED IN CURRENT AND PREVIOUS SFY)



SOURCE & POPULATION: DSHS Integrated Client Databases. All children and youth with Medicaid coverage (includes SCHIP) and a subset of children and youth ever in foster care in SFY 2018.

NOTES: The analysis excludes 25 children with missing data on gender. MH Tx need only is children with MH Tx need but not with SUD Tx need, and SUD Tx need only is children with SUD Tx need but not with MH Tx need.



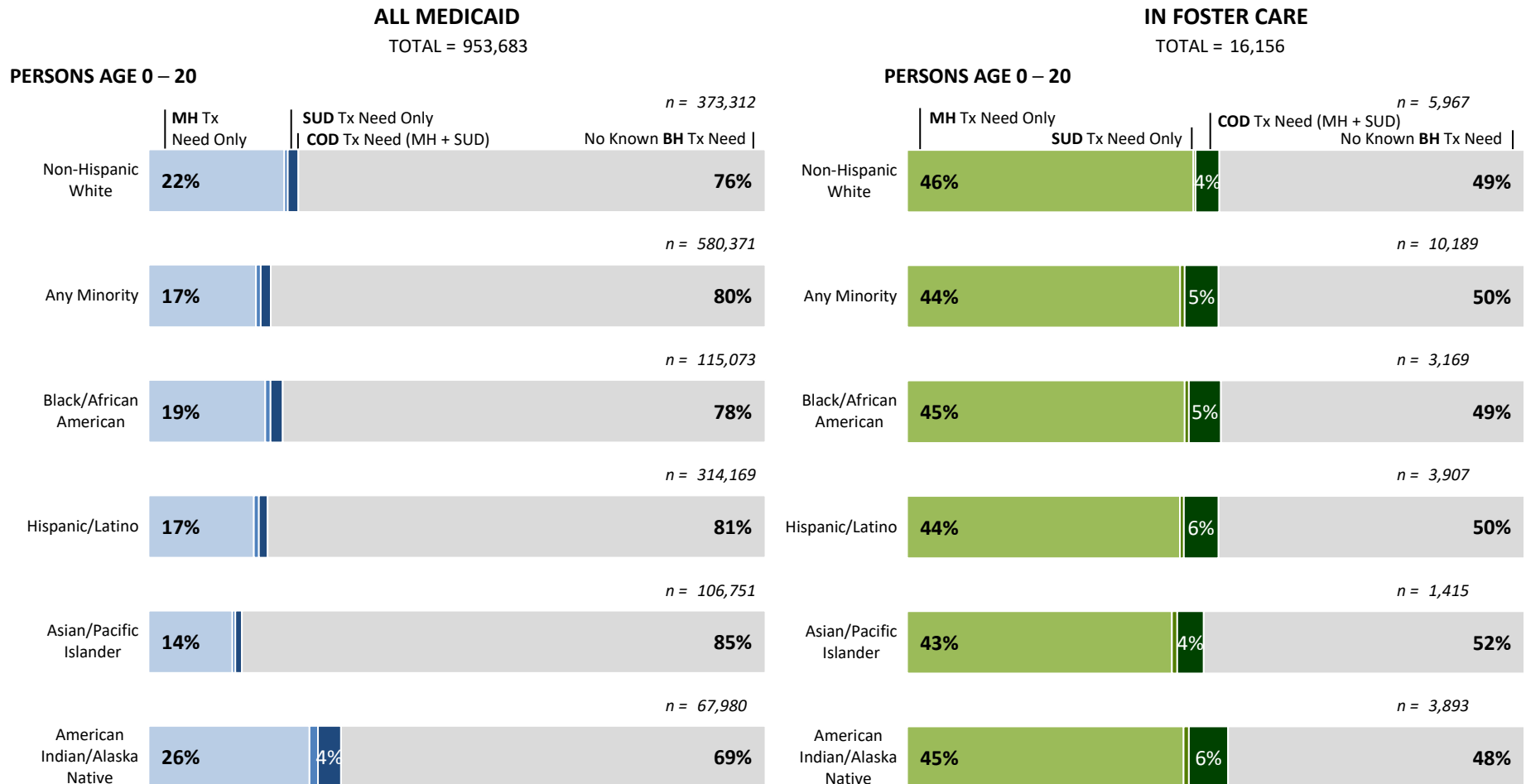
Behavioral Health Treatment Needs and Outcomes among Medicaid Enrolled Children in Washington State

[Back to Contents](#)

February 2021

D. Behavioral Health Treatment Needs of Medicaid Enrolled Children, by Race/Ethnicity, SFY 2018

SFY 2018 COHORT • BEHAVIORAL HEALTH TREATMENT NEEDS BY RACE/ETHNICITY (MEASURED IN CURRENT AND PREVIOUS SFY)



SOURCE & POPULATION: DSHS Integrated Client Databases. All children and youth with Medicaid coverage (includes SCHIP) and children and youth in foster care ever in SFY 2018.

NOTES: Minority categories include Black/African American, Hispanic/Latino, Asian, Native Hawaiian, other Pacific Islander, American Indian or Alaska Native, or other, and they are not mutually exclusive. "Other" group is not shown in the breakdown. The analysis excludes 50,795 children with missing data on race/ethnicity. MH Tx need only is children with MH Tx need but not SUD Tx need, and SUD Tx need only is children with SUD Tx need but not MH Tx need.



Behavioral Health Treatment Needs and Outcomes among Medicaid Enrolled Children in Washington State

[Back to Contents](#)

February 2021

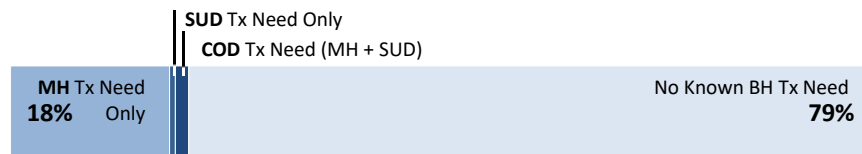
E. Behavioral Health Treatment Needs of Medicaid Enrolled Children, by Service Delivery System, SFY 2018

SFY 2018 COHORT • CHILDREN AGES 0 – 20 ENROLLED IN MEDICAID IN SFY 2018

TOTAL POPULATION WITH MEDICAID COVERAGE

All Age 0-20 on Medicaid (includes SCHIP)

TOTAL = 1,004,478



BY TYPE OF COVERAGE (mutually exclusive)

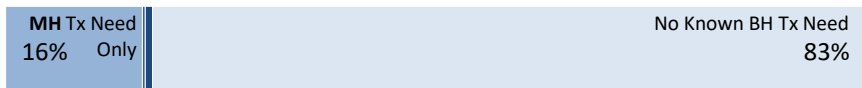
...with Disability-Related Medicaid Coverage

n = 25,701



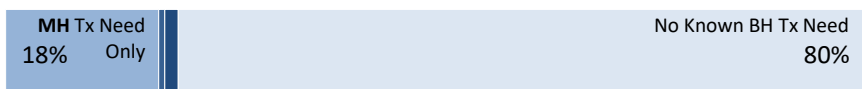
...with SCHIP Coverage

n = 58,079



...with Other Medicaid coverage (not disability or SCHIP)

n = 920,698



BY SERVICE UTILIZATION FOR TOTAL POPULATION WITH MEDICAID

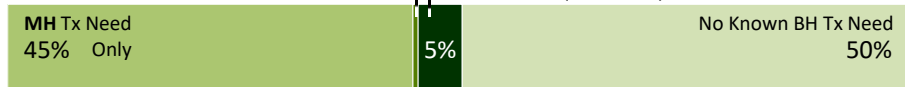
(not mutually exclusive)

...in DCYF Foster Care

SUD Tx Need Only

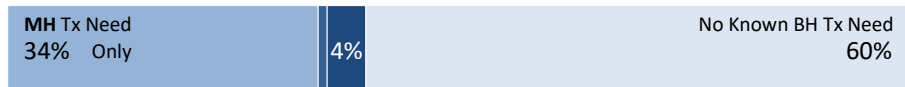
COD Tx Need (MH + SUD)

n = 16,159



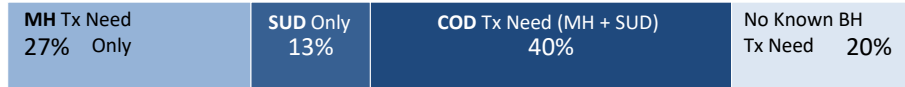
...with any DCYF Child Welfare Service

n = 106,639



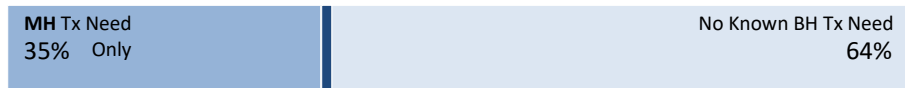
...with DCYF Juvenile Rehabilitation Services

n = 1,618



...with Developmental Disability (DSHS DDA) Services

n = 23,308



...with DSHS ESA Basic Food

n = 449,201



...with DSHS ESA TANF

n = 77,511



SOURCE & POPULATION: DSHS Integrated Client Databases. All children and youth age 0-20 with Medicaid coverage (includes SCHIP) in SFY 2018.

SUPPORTING TABLES | E. Behavioral Health Treatment Needs of Medicaid Enrolled Children, by Service Delivery System, SFY 2018

DELIVERY SYSTEM	ALL MEDICAID SFY 2018																			
	All Children Age 0-20 on Medicaid /SCHIP		With Disability-Related Medicaid Coverage		With SCHIP Coverage		With Other Medicaid Coverage (not disability or SCHIP)		In DCYF Foster Care		With any DCYF Child Welfare Service		With DCYF Juvenile Rehabilitation Services		With DSHS DDA Services		With DSHS ESA Basic Food		With DSHS ESA TANF	
	N	%	N	%	N	%	N	%	N	%	N	%	N	%	N	%	N	%	N	%
TOTAL PERSONS AGE 0 – 20	1,004,478	100%	25,701	100%	58,079	100%	920,698	100%	16,159	100%	106,639	100%	1,618	100%	23,308	100%	449,201	100%	77,511	100%
MH Tx need	201,365	20%	13,278	52%	9,730	17%	178,357	19%	8,065	50%	41,361	39%	1,086	67%	8,371	36%	99,406	22%	19,967	26%
SUD Tx need	22,658	2%	1,014	4%	691	1%	20,953	2%	884	5%	5,637	5%	864	53%	287	1%	12,979	3%	2,226	3%
COD Tx need (MH, SUD)	15,812	2%	889	3%	494	1%	14,429	2%	791	5%	4,571	4%	649	40%	265	1%	9,223	2%	1,685	2%
No BH Tx need (MH, SUD)	796,267	79%	12,298	48%	48,152	83%	735,817	80%	8,001	50%	64,212	60%	317	20%	14,915	64%	346,039	77%	57,003	74%
PERSONS AGE 0 – 4	296,470	100%	2,860	100%	13,936	100%	279,674	100%	7,196	100%	30,336	100%	0	0%	13,122	100%	142,936	100%	30,318	100%
MH Tx need	14,971	5%	689	24%	520	4%	13,762	5%	1,439	20%	3,789	12%	0	0%	2,596	20%	8,657	6%	2,564	8%
No BH Tx need (MH, SUD)	281,499	95%	2,171	76%	13,416	96%	265,912	95%	5,757	80%	26,547	88%	0	0%	10,526	80%	134,279	94%	27,754	92%
PERSONS AGE 5 – 11	353,638	100%	9,236	100%	22,614	100%	321,788	100%	5,074	100%	40,944	100%	*	*	4,185	100%	165,746	100%	27,266	100%
MH Tx need	70,769	20%	4,696	51%	3,336	15%	62,737	19%	3,581	71%	17,253	42%	*	*	2,201	53%	37,714	23%	8,574	31%
No BH Tx need (MH, SUD)	282,869	80%	4,540	49%	19,278	85%	259,051	81%	1,493	29%	23,691	58%	0	0%	1,984	47%	128,032	77%	18,692	69%
PERSONS AGE 12 – 17	255,497	100%	8,339	100%	18,531	100%	228,627	100%	3,258	100%	29,434	100%	1,288	100%	3,453	100%	104,406	100%	16,710	100%
MH Tx need	82,037	32%	5,038	60%	5,052	27%	71,947	31%	2,604	80%	17,153	58%	887	69%	2,096	61%	37,467	36%	7,209	43%
SUD Tx need	12,486	5%	534	6%	532	3%	11,420	5%	721	22%	4,177	14%	695	54%	165	5%	6,778	6%	1,476	9%
COD Tx need (MH, SUD)	8,997	4%	477	6%	386	2%	8,134	4%	661	20%	3,484	12%	526	41%	155	4%	4,851	5%	1,133	7%
No BH Tx need (MH, SUD)	169,971	67%	3,244	39%	13,333	72%	153,394	67%	594	18%	11,588	39%	232	18%	1,347	39%	65,012	62%	9,158	55%
PERSONS AGE 18 – 20	98,873	100%	5,266	100%	2,998	100%	90,609	100%	631	100%	5,925	100%	**	**	2,548	100%	36,113	100%	3,217	100%
MH Tx need	33,588	34%	2,855	54%	822	27%	29,911	33%	441	70%	3,166	53%	**	**	1,478	58%	15,568	43%	1,620	50%
SUD Tx need	10,172	10%	480	9%	159	5%	9,533	11%	163	26%	1,460	25%	169	52%	122	5%	6,201	17%	750	23%
COD Tx need (MH, SUD)	6,815	7%	412	8%	108	4%	6,295	7%	130	21%	1,087	18%	123	38%	110	4%	4,372	12%	552	17%
No BH Tx need (MH, SUD)	61,928	63%	2,343	44%	2,125	71%	57,460	63%	157	25%	2,386	40%	85	26%	1,058	42%	18,716	52%	1,399	43%

SOURCE & POPULATION: DSHS Integrated Client Databases. All children age 0-20 with Medicaid coverage (includes SCHIP) in SFY 2018.

NOTES: The total population of children age 0-20 enrolled in Medicaid/SCHIP in SFY 2018 is broken into three mutually exclusive subgroups, by type of coverage in the first month of coverage in SFY 2018: (a) disability-related coverage; (b) SCHIP; (c) other Medicaid coverage (neither disability-related nor SCHIP). Rates of behavioral health needs are compared across subgroups. Need rates are also examined by non-mutually-exclusive subgroups determined by service utilization in SFY 2018 in four DSHS service types: (d) Juvenile Rehabilitation Services; (e) DDA Services; (f) Basic Food (food assistance through ESA); (g) TANF (Cash assistance through ESA) and two DCYF service types: (h) foster care (DCYF); (i) any child welfare service. *In order to protect the privacy of individuals, cells in this data product that represent 10 or fewer persons are not displayed. **Some additional cells with n>10 have been suppressed to ensure that cells with small numbers cannot be recalculated.



Behavioral Health Treatment Needs and Outcomes among Medicaid Enrolled Children in Washington State

[Back to Contents](#)

February 2021

F. Behavioral Health Treatment Needs of Medicaid Enrolled Children, by Region, SFY 2018

SFY 2018 COHORT • CHILDREN AGES 0 – 20 ENROLLED IN MEDICAID IN SFY 2018



REGION	ALL MEDICAID SFY 2018																			
	Great Rivers		Greater Columbia		King		North Central		North Sound		Pierce		Salish		Southwest		Spokane		Thurston-Mason	
	N	%	N	%	N	%	N	%	N	%	N	%	N	%	N	%	N	%	N	%
TOTAL PERSONS AGE 0 – 20	49,779	100%	155,190	100%	205,339	100%	57,184	100%	149,768	100%	125,814	100%	39,551	100%	76,205	100%	102,171	100%	43,294	100%
MH Tx need	12,725	26%	28,102	18%	35,085	17%	10,459	18%	31,061	21%	25,933	21%	9,446	24%	15,246	20%	23,293	23%	9,993	23%
SUD Tx need	1,352	3%	3,714	2%	3,757	2%	1,344	2%	3,559	2%	2,748	2%	985	2%	1,557	2%	2,499	2%	1,142	3%
Co-occurring Tx need (MH + SUD)	968	2%	2,350	2%	2,620	1%	907	2%	2,464	2%	1,967	2%	713	2%	1,070	1%	1,874	2%	878	2%
No known BH Tx need	36,670	74%	125,724	81%	169,117	82%	46,288	81%	117,612	79%	99,100	79%	29,833	75%	60,472	79%	78,253	77%	33,037	76%
PERSONS AGE 0 – 4	14,455	100%	44,916	100%	61,178	100%	16,170	100%	44,962	100%	38,182	100%	11,646	100%	21,726	100%	30,084	100%	13,083	100%
MH Tx need	888	6%	2,320	5%	2,774	5%	644	4%	2,259	5%	2,233	6%	729	6%	1,101	5%	1,387	5%	633	5%
No known BH Tx need	13,567	94%	42,596	95%	58,404	95%	15,526	96%	42,703	95%	35,949	94%	10,917	94%	20,625	95%	28,697	95%	12,450	95%
PERSONS AGE 5 – 11	17,302	100%	55,218	100%	71,940	100%	20,905	100%	52,497	100%	44,474	100%	13,612	100%	27,063	100%	35,622	100%	14,960	100%
MH Tx need	4,432	26%	9,827	18%	11,894	17%	3,674	18%	10,876	21%	9,125	21%	3,474	26%	5,655	21%	8,348	23%	3,458	23%
No known BH Tx need	12,870	74%	45,391	82%	60,046	83%	17,231	82%	41,621	79%	35,349	79%	10,138	74%	21,408	79%	27,274	77%	11,502	77%
PERSONS AGE 12 – 17	12,840	100%	39,998	100%	52,206	100%	14,682	100%	37,672	100%	31,309	100%	10,156	100%	20,090	100%	25,792	100%	10,728	100%
MH Tx need	5,313	41%	11,238	28%	14,442	28%	4,391	30%	12,601	33%	10,485	33%	3,699	36%	6,140	31%	9,561	37%	4,162	39%
SUD Tx need	737	6%	2,054	5%	2,042	4%	704	5%	1,975	5%	1,515	5%	522	5%	902	4%	1,417	5%	618	6%
Co-occurring Tx need (MH + SUD)	550	4%	1,301	3%	1,484	3%	486	3%	1,416	4%	1,112	4%	396	4%	649	3%	1,105	4%	498	5%
No known BH Tx need	7,340	57%	28,007	70%	37,206	71%	10,073	69%	24,512	65%	20,421	65%	6,331	62%	13,697	68%	15,919	62%	6,446	60%
PERSONS AGE 18 – 20	5,182	100%	15,058	100%	20,015	100%	5,427	100%	14,637	100%	11,849	100%	4,137	100%	7,326	100%	10,673	100%	4,523	100%
MH Tx need	2,092	40%	4,717	31%	5,975	30%	1,750	32%	5,325	36%	4,090	35%	1,544	37%	2,350	32%	3,997	37%	1,740	38%
SUD Tx need	615	12%	1,660	11%	1,715	9%	640	12%	1,584	11%	1,233	10%	463	11%	655	9%	1,082	10%	524	12%
Co-occurring Tx need (MH + SUD)	418	8%	1,049	7%	1,136	6%	421	8%	1,048	7%	855	7%	317	8%	421	6%	769	7%	380	8%
No known BH Tx need	2,893	56%	9,730	65%	13,461	67%	3,458	64%	8,776	60%	7,381	62%	2,447	59%	4,742	65%	6,363	60%	2,639	58%

SOURCE & POPULATION: DSHS Integrated Client Databases. All children and youth age 0-20 with Medicaid coverage (includes SCHIP) in SFY 2018.

NOTES: The total population of children and youth age 0-20 enrolled in Medicaid/SCHIP in SFY 2018 is broken into ten mutually exclusive regions, based on HCA's integrated managed care regions. This analysis excludes 183 children with missing data on county of residence.



Behavioral Health Treatment Needs and Outcomes among Medicaid Enrolled Children in Washington State

[Back to Contents](#)

February 2021

G. Behavioral Health Treatment Needs of Medicaid Enrolled Children, by County, SFY 2018

SFY 2018 COHORT • CHILDREN AGES 0 – 20 ENROLLED IN MEDICAID IN SFY 2018

COUNTY	ALL MEDICAID SFY 2018								
	TOTAL AGE 0-20	MH Tx Need		SUD Tx Need		Co-Occurring Tx Need (MH + SUD)		No Known BH Tx Need	
	N	N	%	N	%	N	%	N	%
STATEWIDE (All Regions)	1,004,295	201,343	20%	22,657	2%	15,811	2%	796,106	79%
Great Rivers	49,779	12,725	26%	1,352	3%	968	2%	36,670	74%
Cowlitz	19,071	5,197	27%	478	3%	346	2%	13,742	72%
Grays Harbor	12,687	2,877	23%	399	3%	273	2%	9,684	76%
Lewis	14,224	3,870	27%	357	3%	272	2%	10,269	72%
Pacific	3,235	630	19%	106	3%	**	**	2,568	79%
Wahkiakum	562	151	27%	12	2%	*	*	407	72%
Greater Columbia	155,190	28,102	18%	3,714	2%	2,350	2%	125,724	81%
Asotin	3,600	994	28%	131	4%	100	3%	2,575	72%
Benton	35,949	6,500	18%	770	2%	532	1%	29,211	81%
Columbia	601	154	26%	**	**	*	*	443	74%
Franklin	25,315	3,585	14%	451	2%	264	1%	21,543	85%
Garfield	346	80	23%	*	*	*	*	264	76%
Kittitas	4,961	1,028	21%	150	3%	103	2%	3,886	78%
Walla Walla	9,581	2,170	23%	274	3%	186	2%	7,323	76%
Whitman	4,041	885	22%	75	2%	52	1%	3,133	78%
Yakima	70,796	12,706	18%	1,846	3%	1,102	2%	57,346	81%
King	205,339	35,085	17%	3,757	2%	2,620	1%	169,117	82%
North Central	57,184	10,459	18%	1,344	2%	907	2%	46,288	81%
Chelan	14,693	2,977	20%	403	3%	277	2%	11,590	79%
Douglas	8,587	1,755	20%	228	3%	155	2%	6,759	79%
Grant	24,871	4,116	17%	498	2%	314	1%	20,571	83%
Okanogan	9,033	1,611	18%	215	2%	161	2%	7,368	82%
North Sound	149,768	31,061	21%	3,559	2%	2,464	2%	117,612	79%
Island	7,734	1,588	21%	162	2%	110	1%	6,094	79%
San Juan	1,623	298	18%	41	3%	27	2%	1,311	81%
Skagit	20,499	4,891	24%	567	3%	373	2%	15,414	75%
Snohomish	91,719	17,857	19%	2,097	2%	1,444	2%	73,209	80%
Whatcom	28,193	6,427	23%	692	2%	510	2%	21,584	77%

Pierce	125,814	25,933	21%	2,748	2%	1,967	2%	99,100	79%
Salish	39,551	9,446	24%	985	2%	713	2%	29,833	75%
Clallam	10,143	2,261	22%	340	3%	233	2%	7,775	77%
Jefferson	3,014	692	23%	81	3%	59	2%	2,300	76%
Kitsap	26,394	6,493	25%	564	2%	421	2%	19,758	75%
Southwest	76,205	15,246	20%	1,557	2%	1,070	1%	60,472	79%
Clark	71,276	14,294	20%	1,424	2%	995	1%	56,553	79%
Klickitat	3,447	612	18%	83	2%	45	1%	2,797	81%
Skamania	1,482	340	23%	50	3%	30	2%	1,122	76%
Spokane	102,171	23,293	23%	2,499	2%	1,874	2%	78,253	77%
Adams	6,623	825	12%	109	2%	51	1%	5,740	87%
Ferry	1,274	260	20%	43	3%	26	2%	997	78%
Lincoln	1,670	308	18%	20	1%	14	1%	1,356	81%
Pend Oreille	2,246	465	21%	51	2%	38	2%	1,768	79%
Spokane	82,363	19,814	24%	2,109	3%	1,626	2%	62,066	75%
Stevens	7,995	1,621	20%	167	2%	119	1%	6,326	79%
Thurston-Mason	43,294	9,993	23%	1,142	3%	878	2%	33,037	76%
Mason	9,891	2,226	23%	284	3%	204	2%	7,585	77%
Thurston	33,403	7,767	23%	858	3%	674	2%	25,452	76%

SOURCE & POPULATION: DSHS Integrated Client Databases. All children and youth age 0-20 with Medicaid coverage (includes SCHIP) in SFY 2018.

NOTES: The total population of children age 0-20 enrolled in Medicaid/SCHIP in SFY 2018 is broken into ten mutually exclusive regions, based on Washington State's IMC regions. The analysis excludes 183 children with missing data on county of residence. *In order to protect the privacy of individuals, cells in this data product that represent 10 or fewer persons are not displayed. **Some additional cells with n>10 have been suppressed to ensure that cells with small numbers cannot be recalculated.



Behavioral Health Treatment Needs and Outcomes among Medicaid Enrolled Children in Washington State

February 2021

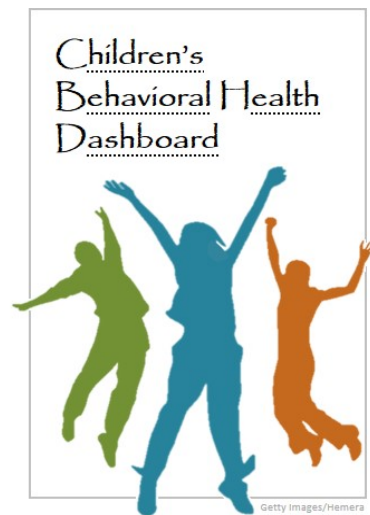
H. Behavioral Health Treatment Needs of Medicaid Enrolled Children, by Abuse and Neglect History, SFY 2018

SFY 2018 COHORT • BEHAVIORAL HEALTH TREATMENT NEEDS (MEASURED IN CURRENT AND PREVIOUS SFY)

ABUSE/NEGLECT HISTORY	ALL MEDICAID				IN FOSTER CARE									
	Ever Abuse/Neglect		No Known Abuse/Neglect		Ever Abuse/Neglect		Ever Neglect		Ever Physical Abuse		Ever Sexual Abuse		Abuse/Neglect History Unknown	
	N	%	N	%	N	%	N	%	N	%	N	%	N	%
POPULATION PROPORTIONS (row %)	221,874	22%	782,604	78%	13,630	84%	12,733	79%	5,981	37%	1,890	12%	2,529	16%
PROPORTIONS WITH BH TX NEEDS (col. %)														
TOTAL PERSONS AGE 0 – 20	221,874	100%	782,604	100%	13,630	100%	12,733	100%	5,981	100%	1,890	100%	2,529	100%
MH Tx need	86,030	39%	115,335	15%	7,731	57%	7,348	58%	4,112	69%	1,440	76%	334	13%
SUD Tx need	12,617	6%	10,041	1%	851	6%	814	6%	575	10%	240	13%	33	1%
Co-occurring Tx need (MH + SUD)	9,479	4%	6,333	1%	764	6%	731	6%	527	9%	218	12%	27	1%
No known BH Tx need	132,706	60%	663,561	85%	5,812	43%	5,302	42%	1,821	30%	428	23%	2,189	87%
PERSONS AGE 0 – 4	31,153	100%	265,317	100%	4,936	100%	4,533	100%	1,493	100%	224	100%	2,260	100%
MH Tx need	4,368	14%	10,603	4%	1,246	25%	1,169	26%	477	32%	94	42%	193	9%
No known BH Tx need	26,785	86%	254,714	96%	3,690	75%	3,364	74%	1,016	68%	130	58%	2,067	91%
PERSONS AGE 5 – 11	84,899	100%	268,739	100%	4,921	100%	4,674	100%	2,249	100%	711	100%	153	100%
MH Tx need	31,002	37%	39,767	15%	3,516	71%	3,377	72%	1,776	79%	552	78%	65	42%
No known BH Tx need	53,897	63%	228,972	85%	1,405	29%	1,297	28%	473	21%	159	22%	88	58%
PERSONS AGE 12 – 17	77,195	100%	178,302	100%	3,159	100%	2,948	100%	1,858	100%	756	100%	99	100%
MH Tx need	37,366	48%	44,671	25%	**	**	2,397	81%	1,571	85%	634	84%	**	**
SUD Tx need	7,507	10%	4,979	3%	**	**	664	23%	474	26%	178	24%	**	**
Co-occurring Tx need (MH + SUD)	5,832	8%	3,165	2%	**	**	610	21%	442	24%	166	22%	**	**
No known BH Tx need	38,154	49%	131,817	74%	**	**	497	17%	255	14%	110	15%	**	**
PERSONS AGE 18 – 20	28,627	100%	70,246	100%	614	100%	578	100%	381	100%	199	100%	17	100%
MH Tx need	13,294	46%	20,294	29%	**	**	405	70%	288	76%	160	80%	*	*
SUD Tx need	5,110	18%	5,062	7%	**	**	150	26%	101	27%	62	31%	*	*
Co-occurring Tx need (MH + SUD)	3,647	13%	3,168	5%	**	**	121	21%	85	22%	52	26%	*	*
No known BH Tx need	13,870	48%	48,058	68%	**	**	144	25%	77	20%	29	15%	*	*

SOURCE & POPULATION: DSHS Integrated Client Databases. All children and youth with Medicaid coverage (includes SCHIP) and a subset of children and youth ever in foster care in SFY 2018. Maltreatment data comes from Child Protective Services (CPS) intake and investigation information stored in DCYF's FamLink data system.

NOTES: Abuse and neglect categories are not mutually exclusive. *In order to protect the privacy of individuals, cells in this data product that represent 10 or fewer persons are not displayed. **Some additional cells with n>10 have been suppressed to ensure that cells with small numbers cannot be recalculated.



SECTION 2

Outcome Measures

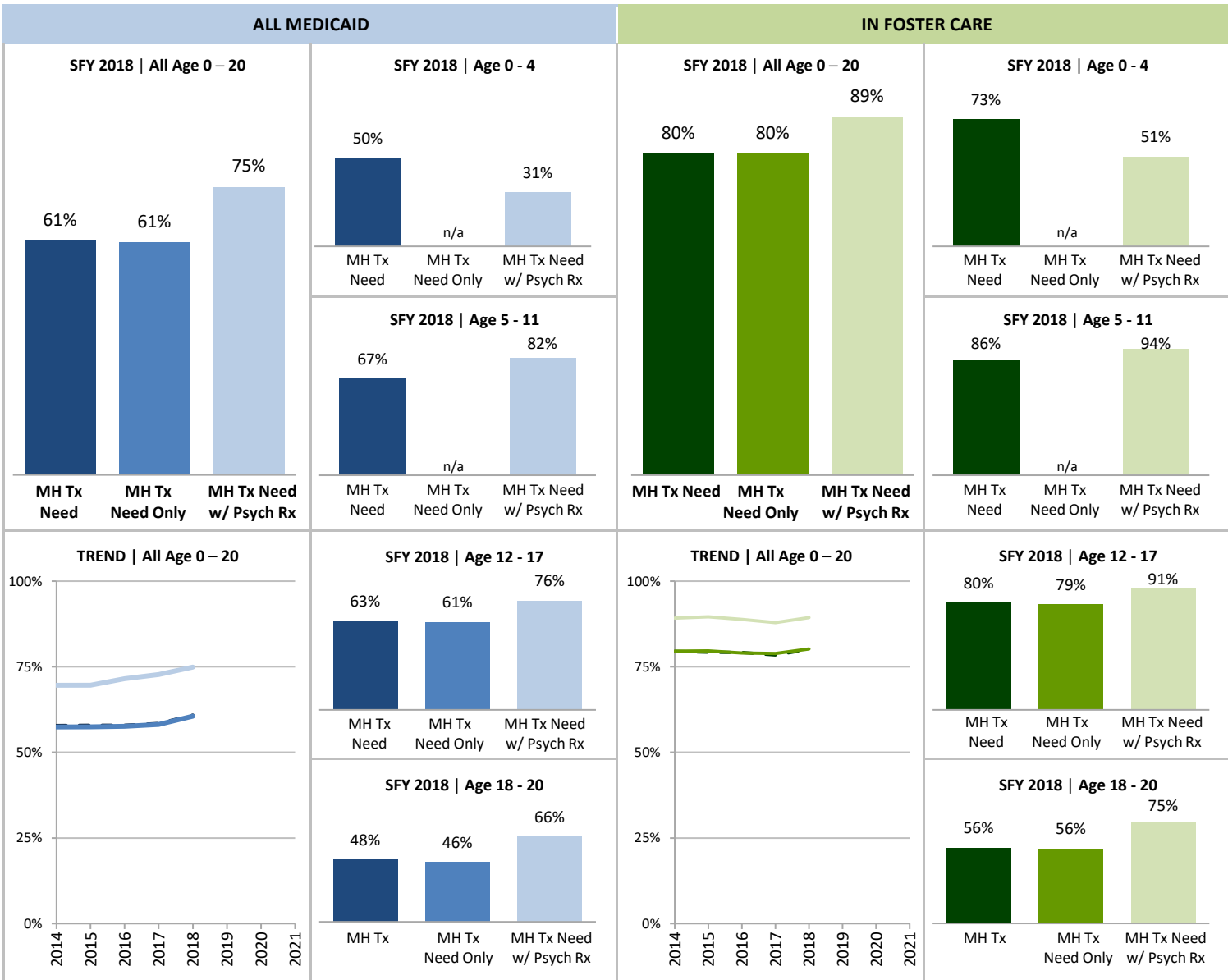
Treatment Penetration for Children with MH Tx Need

Proportion of children with mental health treatment needs who receive mental health treatment services.

- MH Tx Need
- MH Tx Need Only
- MH Tx Need w/ Psych Rx

- MH Tx Need
- MH Tx Need Only
- MH Tx Need w/ Psych Rx

DSHS Integrated Client Databases. All children and youth with Medicaid coverage (includes SCHIP) and a subset of children and youth ever in foster care in SFY.



SUPPORTING TABLES | 1 Treatment Penetration for Children with Mental Health Treatment Need

	ALL MEDICAID								IN FOSTER CARE							
STATE FISCAL YEAR	2014	2015	2016	2017	2018	2019	2020	2021	2014	2015	2016	2017	2018	2019	2020	2021
TOTAL PERSONS AGE 0 – 20																
MH Tx need, percent	58%	58%	58%	58%	61%				80%	79%	79%	78%	80%			
Persons receiving MH Tx	87,005	95,711	104,233	110,902	122,600				6,153	6,211	6,094	6,202	6,459			
Total number of persons	150,403	165,248	179,923	189,725	201,365				7,738	7,835	7,695	7,906	8,065			
MH Tx need only (no COD), percent	57%	57%	58%	58%	61%				80%	80%	79%	79%	80%			
Persons receiving MH Tx	78,788	86,366	94,153	100,835	112,389				5,433	5,501	5,381	5,573	5,834			
Total number of persons	137,199	150,202	163,397	173,328	185,553				6,826	6,908	6,807	7,065	7,274			
MH Tx need with Psych Rx, percent	70%	70%	72%	73%	75%				89%	90%	89%	88%	89%			
Persons receiving MH Tx	42,642	46,933	51,620	53,307	56,263				2,286	2,253	2,186	2,193	2,232			
Total number of persons	61,269	67,419	72,149	73,285	75,121				2,562	2,515	2,461	2,495	2,497			
PERSONS AGE 0 – 4																
MH Tx need, percent	45%	44%	45%	46%	50%				68%	69%	73%	70%	73%			
Persons receiving MH Tx	5,908	5,922	6,228	6,391	7,504				955	937	937	943	1,049			
Total number of persons	13,103	13,385	13,884	13,859	14,971				1,406	1,362	1,292	1,338	1,439			
MH Tx need with Psych Rx, percent	25%	25%	28%	28%	31%				46%	49%	61%	46%	51%			
Persons receiving MH Tx	558	470	530	476	528				61	48	61	41	53			
Total number of persons	2,194	1,915	1,873	1,694	1,724				133	98	100	90	103			
PERSONS AGE 5 – 11																
MH Tx need, percent	65%	65%	65%	66%	67%				86%	85%	84%	85%	86%			
Persons receiving MH Tx	37,120	39,037	41,732	44,134	47,685				2,854	2,933	2,910	3,020	3,071			
Total number of persons	57,137	60,009	63,910	67,020	70,769				3,338	3,445	3,453	3,560	3,581			
MH Tx need with Psych Rx, percent	78%	78%	80%	80%	82%				95%	93%	93%	95%	94%			
Persons receiving MH Tx	17,590	17,949	18,886	19,094	19,667				934	918	910	957	937			
Total number of persons	22,476	23,061	23,707	23,853	24,000				983	984	978	1,010	996			
PERSONS AGE 12 – 17																
MH Tx need, percent	59%	59%	60%	60%	63%				80%	80%	79%	78%	80%			
Persons receiving MH Tx	36,133	39,692	43,221	45,855	51,298				2,207	2,181	2,045	2,011	2,091			
Total number of persons	61,633	66,718	72,565	76,762	82,037				2,764	2,737	2,596	2,591	2,604			
MH Tx need only (no COD), percent	57%	58%	58%	59%	61%				79%	80%	77%	77%	79%			
Persons receiving MH Tx	30,104	33,281	36,673	39,595	44,907				1,521	1,518	1,396	1,453	1,541			
Total number of persons	52,616	57,334	62,823	67,458	73,040				1,914	1,900	1,807	1,882	1,943			
MH Tx need with Psych Rx, percent	70%	71%	73%	74%	76%				90%	91%	90%	89%	91%			
Persons receiving MH Tx	19,690	21,460	23,613	24,419	25,837				1,198	1,172	1,068	1,049	1,090			
Total number of persons	27,996	30,119	32,415	32,889	33,798				1,331	1,284	1,190	1,180	1,196			

PERSONS AGE 18 – 20										
MH Tx need, percent	42%	44%	44%	45%	48%	60%	55%	57%	55%	56%
Persons receiving MH Tx	7,844	11,060	13,052	14,522	16,113	137	160	202	228	248
Total number of persons	18,530	25,136	29,564	32,084	33,588	230	291	354	417	441
MH Tx need only (no COD), percent	39%	42%	42%	43%	46%	61%	56%	54%	55%	56%
Persons receiving MH Tx	5,656	8,126	9,520	10,715	12,293	103	113	138	157	173
Total number of persons	14,343	19,474	22,780	24,991	26,773	168	201	255	285	311
MH Tx need with Psych Rx, percent	56%	57%	61%	63%	66%	81%	77%	76%	68%	75%
Persons receiving MH Tx	4,804	7,054	8,591	9,318	10,231	93	115	147	146	152
Total number of persons	8,603	12,324	14,154	14,849	15,599	115	149	193	215	202

NOTES: Denominator for percentages is number of persons with indications of MH Tx need in the current or past SFY. Numerator is number of persons receiving outpatient mental health services in the current SFY. Outpatient mental health services include most modalities of outpatient mental health services delivered through DBHR (excludes, for example, case management), as well as Behavioral Rehabilitation Services from DCYF and outpatient mental health services delivered through HCA or tribal authorities. Note that tabulation of mental health services received in this measure reflects a one-year window, whereas the mental health services component of indication of MH TX need (see Table B in Section 1) reflects a two-year window. The MH Tx need only (no SUD) group is shown only for age 12-20, the earliest age at which SUD Tx need is measured. See next page for youth 12-20 with SUD and/or COD. MH Tx need with Psych Rx represents children with any MH Tx need (alone or with combination with SUD Tx need) who also filled a psychotropic prescription in the two-year need window.

Behavioral Health Treatment Needs and Outcomes among Medicaid Enrolled Children in Washington State

[Back to Contents](#)

February 2021

MEASURE 2

Treatment Penetration for Youth with SUD and COD Tx Needs

INDICATOR

Proportion of youth age 12-20 with SUD and COD treatment needs who receive appropriate behavioral health treatment services.

ALL MEDICAID:

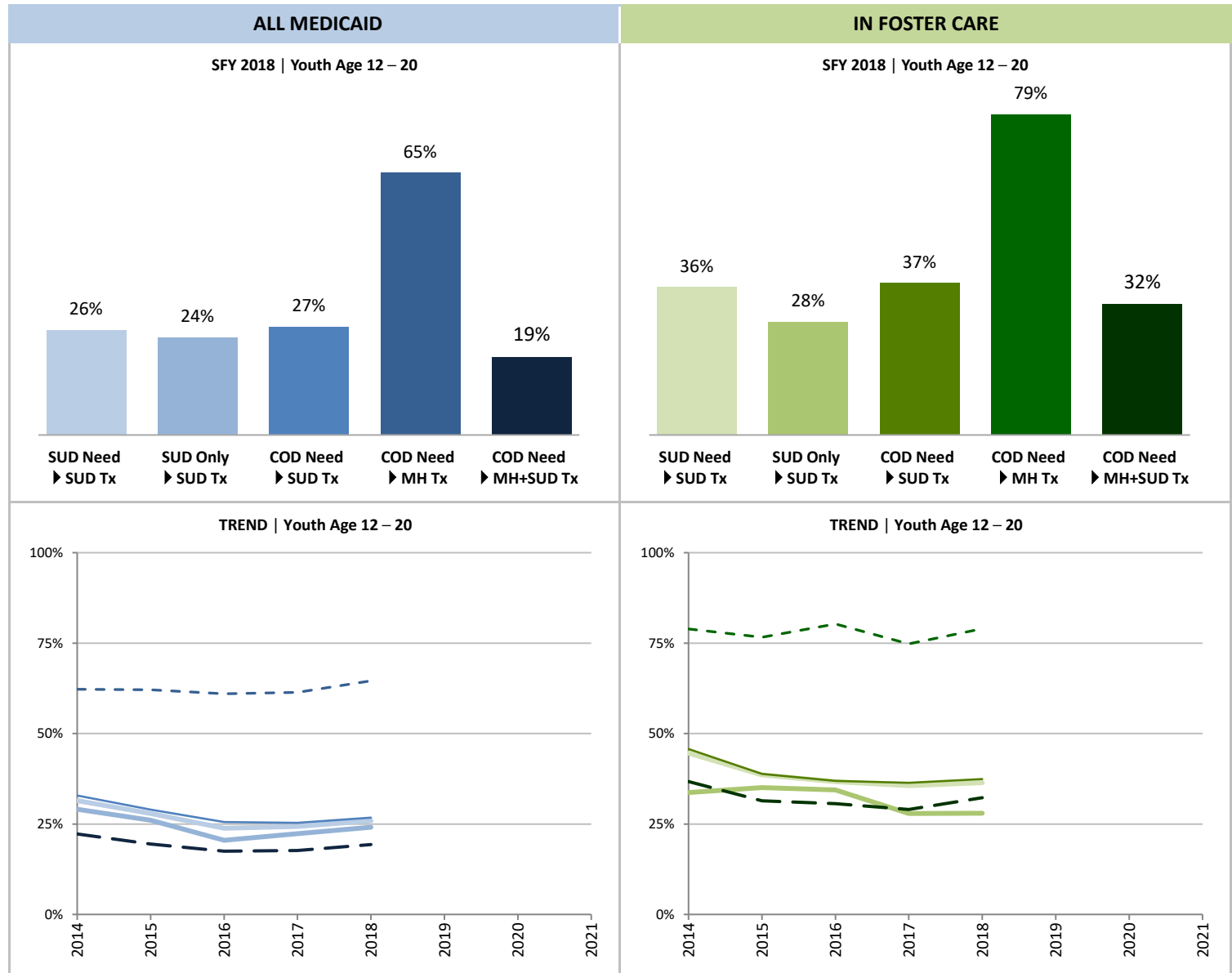
- SUD Need, SUD Tx
- SUD Need Only, SUD Tx
- COD Need, SUD Tx
- - COD Need, MH Tx
- - COD Need, MH+SUD Tx

IN FOSTER CARE:

- SUD Need, SUD Tx
- SUD Need Only, SUD Tx
- COD Need, SUD Tx
- - COD Need, MH Tx
- - COD Need, MH+SUD Tx

SOURCE & POPULATION

DSHS Integrated Client Databases.
Children and youth age 12-20 with Medicaid coverage (includes SCHIP) and a subset of children and youth ever in foster care in SFY.



SUPPORTING TABLES | **2 Treatment Penetration for Youth with SUD and COD Treatment Needs**

STATE FISCAL YEAR	ALL MEDICAID								IN FOSTER CARE							
	2014	2015	2016	2017	2018	2019	2020	2021	2014	2015	2016	2017	2018	2019	2020	2021
PERSONS AGE 12 – 20																
SUD Tx need: SUD Tx percent	31%	28%	24%	24%	26%				45%	39%	37%	36%	36%			
Persons receiving SUD Tx	6,608	6,535	5,960	5,927	5,875				449	387	360	330	322			
Persons with SUD Tx need	21,006	23,400	25,020	24,356	22,658				1,007	1,004	981	927	884			
SUD Tx need only (no COD): SUD Tx	29%	26%	20%	22%	24%				34%	35%	34%	28%	28%			
Persons receiving SUD Tx	2,268	2,175	1,741	1,775	1,649				32	27	32	24	26			
Persons with SUD Tx need only	7,802	8,354	8,494	7,959	6,846				95	77	93	86	93			
COD Tx Need: SUD Tx percent	33%	29%	26%	25%	27%				46%	39%	37%	36%	37%			
Persons receiving SUD Tx	4,340	4,360	4,219	4,152	4,226				417	360	328	306	296			
Persons with COD Tx needs	13,204	15,046	16,526	16,397	15,812				912	927	888	841	791			
COD Tx Need: MH Tx percent	62%	62%	61%	61%	65%				79%	77%	80%	75%	79%			
Persons receiving MH Tx	8,217	9,345	10,080	10,067	10,211				720	710	713	629	625			
Persons with COD Tx needs	13,204	15,046	16,526	16,397	15,812				912	927	888	841	791			
COD Tx Need: MH+SUD Tx percent	22%	19%	17%	18%	19%				37%	31%	31%	29%	32%			
Persons receiving both MH+SUD Tx	2,937	2,933	2,889	2,900	3,052				335	291	272	244	255			
Persons with COD Tx needs	13,204	15,046	16,526	16,397	15,812				912	927	888	841	791			
PERSONS AGE 12 – 17																
SUD Tx need: SUD Tx percent	36%	34%	29%	30%	32%				47%	41%	40%	39%	40%			
Persons receiving SUD Tx	5,044	4,640	4,114	3,983	3,966				435	365	341	303	291			
Persons with SUD Tx need	13,836	13,820	14,136	13,332	12,486				934	894	863	772	721			
SUD Tx need only (no COD): SUD Tx	35%	33%	26%	29%	31%				**	**	**	**	**			
Persons receiving SUD Tx	1,700	1,471	1,148	1,179	1,094				**	**	**	**	**			
Persons with SUD Tx need only	4,819	4,436	4,394	4,028	3,489				84	57	74	63	60			
COD Tx Need: SUD Tx percent	37%	34%	30%	30%	32%				48%	41%	39%	40%	41%			
Persons receiving SUD Tx	3,344	3,169	2,966	2,804	2,872				406	340	311	282	270			
Persons with COD Tx needs	9,017	9,384	9,742	9,304	8,997				850	837	789	709	661			
COD Tx Need: MH Tx percent	67%	68%	67%	67%	71%				81%	79%	82%	79%	83%			
Persons receiving MH Tx	6,029	6,411	6,548	6,260	6,391				686	663	649	558	550			
Persons with COD Tx needs	9,017	9,384	9,742	9,304	8,997				850	837	789	709	661			
COD Tx Need: MH+SUD Tx percent	26%	24%	22%	22%	24%				**	**	**	32%	36%			
Persons receiving both MH+SUD Tx	2,342	2,247	2,186	2,053	2,178				**	**	**	226	238			
Persons with COD Tx needs	9,017	9,384	9,742	9,304	8,997				850	837	789	709	661			

PERSONS AGE 18 – 20										
SUD Tx need: SUD Tx percent	22%	20%	17%	18%	19%	19%	20%	16%	17%	19%
Persons receiving SUD Tx	1,564	1,895	1,846	1,944	1,909	14	22	19	27	31
Persons with SUD Tx need	7,170	9,580	10,884	11,024	10,172	73	110	118	155	163
SUD Tx need only (no COD): SUD Tx	19%	18%	14%	15%	17%	*	*	*	*	*
Persons receiving SUD Tx	568	704	593	596	555	*	*	*	*	*
Persons with SUD Tx need only	2,983	3,918	4,100	3,931	3,357	11	20	19	23	33
COD Tx Need: SUD Tx percent	24%	21%	18%	19%	20%	18%	22%	17%	18%	20%
Persons receiving SUD Tx	996	1,191	1,253	1,348	1,354	11	20	17	24	26
Persons with COD Tx needs	4,187	5,662	6,784	7,093	6,815	62	90	99	132	130
COD Tx Need: MH Tx percent	52%	52%	52%	54%	56%	55%	52%	65%	54%	58%
Persons receiving MH Tx	2,188	2,934	3,532	3,807	3,820	34	47	64	71	75
Persons with COD Tx needs	4,187	5,662	6,784	7,093	6,815	62	90	99	132	130
COD Tx Need: MH+SUD Tx percent	14%	12%	10%	12%	13%	*	*	*	14%	13%
Persons receiving both MH+SUD Tx	595	686	703	847	874	*	*	*	18	17
Persons with COD Tx needs	4,187	5,662	6,784	7,093	6,815	62	90	99	132	130

NOTES: *In order to protect the privacy of individuals, cells in this data product that represent 10 or fewer persons are not displayed. **Some additional cells with n>10 have been suppressed to ensure that cells with small numbers cannot be recalculated.

Behavioral Health Treatment Needs and Outcomes among Medicaid Enrolled Children in Washington State

[Back to Contents](#)

February 2021

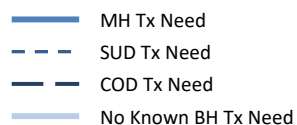
MEASURE 3

Mental Health Crisis Services

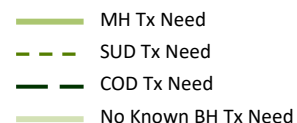
INDICATOR

Proportion of children who have received at least one mental health crisis service in SFY.

ALL MEDICAID:

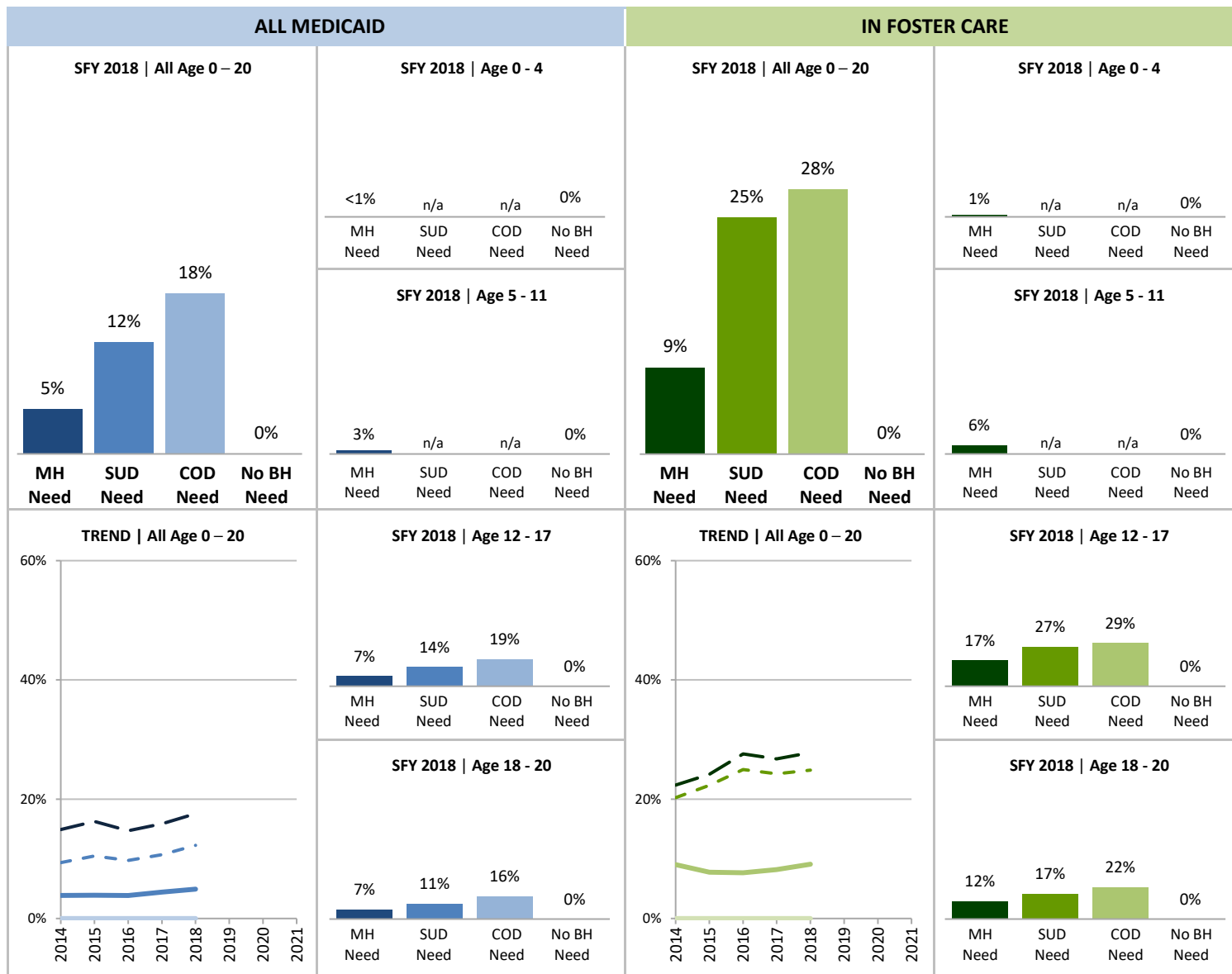


IN FOSTER CARE:



SOURCE & POPULATION

DSHS Integrated Client Databases. All children and youth with Medicaid coverage (includes SCHIP) and a subset of children and youth ever in foster care in SFY.



SUPPORTING TABLES | 3 Mental Health Crisis Services

	ALL MEDICAID								IN FOSTER CARE							
STATE FISCAL YEAR	2014	2015	2016	2017	2018	2019	2020	2021	2014	2015	2016	2017	2018	2019	2020	2021
TOTAL PERSONS AGE 0-20																
Total persons, percent	1%	1%	1%	1%	1%						5%	4%	4%	4%	5%	
Number of persons with MH crisis	5,827	6,450	6,978	8,407	9,918						698	607	590	649	734	
Total number of persons	897,554	937,581	977,260	998,091	1,004,478						15,270	15,471	15,568	16,132	16,159	
MH Tx need, percent	4%	4%	4%	4%	5%						9%	8%	8%	8%	9%	
Number of persons with MH crisis	5,815	6,443	6,970	8,402	9,913						698	607	590	649	734	
Total number of persons	150,403	165,248	179,923	189,725	201,365						7,738	7,835	7,695	7,906	8,065	
SUD Tx need, percent	9%	10%	10%	11%	12%						20%	22%	25%	24%	25%	
Number of persons with MH crisis	1,968	2,450	2,435	2,608	2,780						204	224	245	225	220	
Total number of persons	21,006	23,400	25,020	24,356	22,658						1,007	1,004	981	927	884	
Co-occurring Tx need, percent	15%	16%	15%	16%	18%						22%	24%	28%	27%	28%	
Number of persons with MH crisis	1,968	2,450	2,435	2,608	2,780						204	224	245	225	220	
Total number of persons	13,204	15,046	16,526	16,397	15,812						912	927	888	841	791	
No known BH Tx need, percent	0%	0%	0%	0%	0%						0%	0%	0%	0%	0%	
Number of persons with MH crisis	0	0	0	0	0						0	0	0	0	0	
Total number of persons	739,349	763,979	788,843	800,407	796,267						7,437	7,559	7,780	8,140	8,001	
PERSONS AGE 0 – 4																
MH Tx need, percent	1%	<1%	<1%	<1%	<1%						6%	2%	*	1%	1%	
Number of persons with MH crisis	114	52	24	45	58						82	22	*	12	19	
Total number of persons	13,103	13,385	13,884	13,859	14,971						1,406	1,362	1,292	1,338	1,439	
No known BH Tx need, percent	0%	0%	0%	0%	0%						0%	0%	0%	0%	0%	
Number of persons with MH crisis	0	0	0	0	0						0	0	0	0	0	
Total number of persons	272,846	274,451	281,841	284,411	281,499						5,440	5,442	5,621	5,876	5,757	
PERSONS AGE 5 – 11																
MH Tx need, percent	2%	2%	2%	2%	3%						5%	4%	**	5%	6%	
Number of persons with MH crisis	963	981	1,078	1,382	1,789						174	150	**	169	211	
Total number of persons	57,137	60,009	63,910	67,020	70,769						3,338	3,445	3,453	3,560	3,581	
No known BH Tx need, percent	0%	0%	0%	0%	0%						0%	0%	0%	0%	0%	
Number of persons with MH crisis	0	0	0	0	0						0	0	0	0	0	
Total number of persons	259,327	267,036	277,399	283,081	282,869						1,401	1,468	1,483	1,547	1,493	
PERSONS AGE 12 – 17																
MH Tx need, percent	6%	6%	6%	7%	7%						15%	15%	15%	16%	17%	
Number of persons with MH crisis	3,555	4,006	4,313	5,077	5,835						424	408	400	427	451	
Total number of persons	61,633	66,718	72,565	76,762	82,037						2,764	2,737	2,596	2,591	2,604	
SUD Tx need, percent	10%	12%	11%	12%	14%						**	23%	25%	26%	27%	
Number of persons with MH crisis	1,357	1,630	1,540	1,575	1,696						**	208	217	200	192	
Total number of persons	13,836	13,820	14,136	13,332	12,486						934	894	863	772	721	
Co-occurring Tx need, percent	15%	17%	16%	17%	19%						**	25%	28%	28%	29%	
Number of persons with MH crisis	1,357	1,630	1,540	1,575	1,696						**	208	217	200	192	
Total number of persons	9,017	9,384	9,742	9,304	8,997						850	837	789	709	661	
No known BH Tx need, percent	0%	0%	0%	0%	0%						0%	0%	0%	0%	0%	
Number of persons with MH crisis	0	0	0	0	0						0	0	0	0	0	
Total number of persons	158,957	161,774	165,940	169,786	169,971						537	552	546	568	594	

PERSONS AGE 18 – 20										
MH Tx need, percent	6%	6%	5%	6%	7%	8%	9%	11%	10%	12%
Number of persons with MH crisis	1,183	1,404	1,555	1,898	2,231	18	27	38	41	53
Total number of persons	18,530	25,136	29,564	32,084	33,588	230	291	354	417	441
SUD Tx need, percent	9%	9%	8%	9%	11%	*	15%	24%	16%	17%
Number of persons with MH crisis	611	820	895	1,033	1,084	*	16	28	25	28
Total number of persons	7,170	9,580	10,884	11,024	10,172	73	110	118	155	163
Co-occurring Tx need, percent	15%	14%	13%	15%	16%	*	18%	28%	19%	22%
Number of persons with MH crisis	611	820	895	1,033	1,084	*	16	28	25	28
Total number of persons	4,187	5,662	6,784	7,093	6,815	62	90	99	132	130
No known BH Tx need, percent	0%	0%	0%	0%	0%	0%	0%	0%	0%	0%
Number of persons with MH crisis	0	0	0	0	0	0	0	0	0	0
Total number of persons	48,219	60,718	63,663	63,129	61,928	59	97	130	149	157

NOTES: *In order to protect the privacy of individuals, cells in this data product that represent 10 or fewer persons are not displayed. **Some additional cells with n>10 have been suppressed to ensure that cells with small numbers cannot be recalculated.

Behavioral Health Treatment Needs and Outcomes among Medicaid Enrolled Children in Washington State

[Back to Contents](#)

February 2021

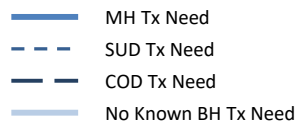
MEASURE 4

Mental Health Inpatient Services

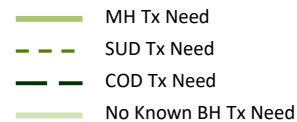
INDICATOR

Proportion of children with any
inpatient mental health services in SFY.

ALL MEDICAID:

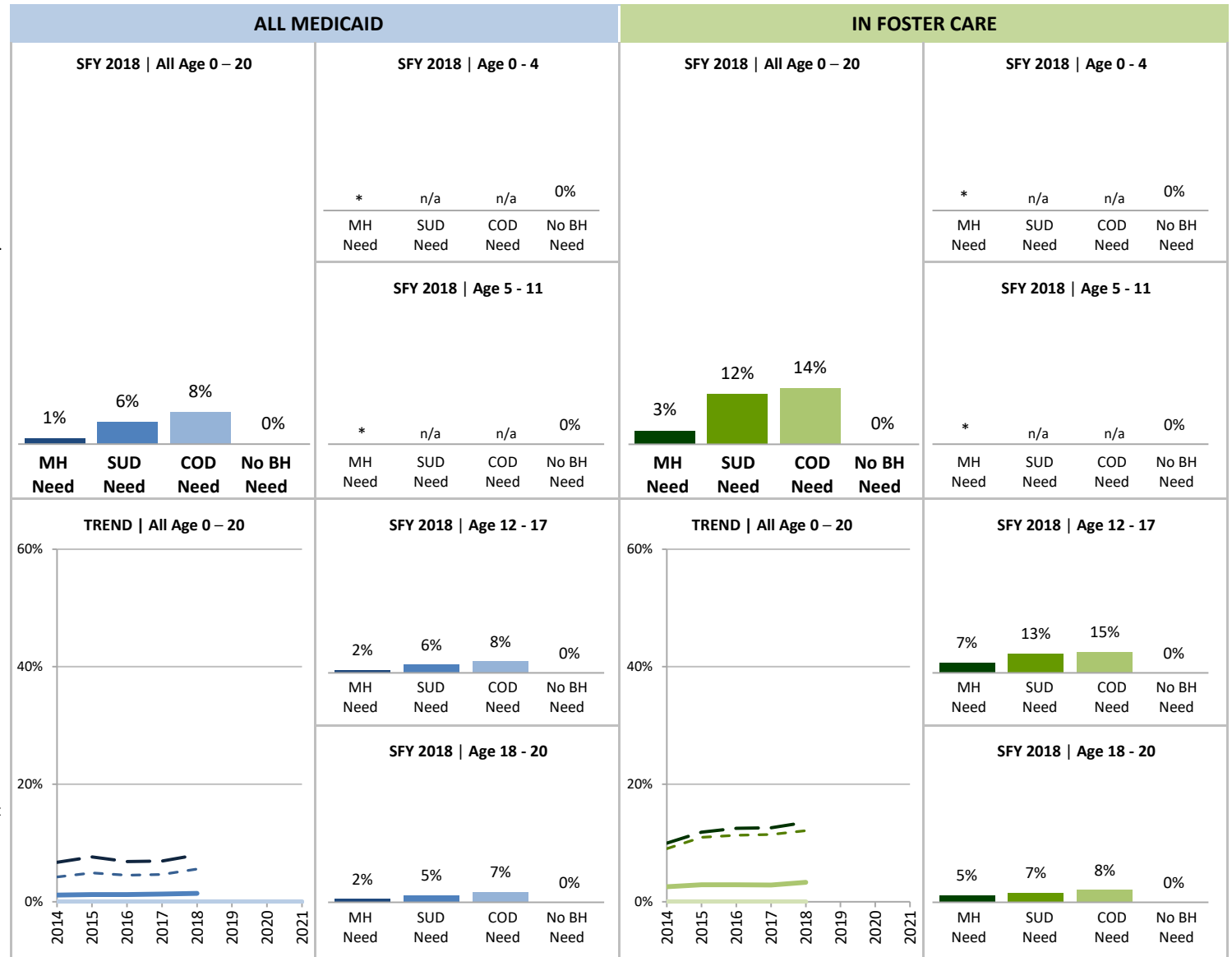


IN FOSTER CARE:



SOURCE & POPULATION

DSHS Integrated Client Databases. All children and youth with Medicaid coverage (includes SCHIP) and a subset of children and youth ever in foster care in SFY. * Data suppressed. See notes below for details.



SUPPORTING TABLES | 4 Mental Health Inpatient Services

STATE FISCAL YEAR	ALL MEDICAID								IN FOSTER CARE							
	2014	2015	2016	2017	2018	2019	2020	2021	2014	2015	2016	2017	2018	2019	2020	2021
TOTAL PERSONS AGE 0-20																
Total persons, percent	0%	0%	0%	0%	0%				1%	1%	1%	1%	2%			
Number of persons with MH IP	1,717	2,033	2,174	2,471	2,877				198	228	224	225	267			
Total number of persons	897,554	937,581	977,260	998,091	1,004,478				15,270	15,471	15,568	16,132	16,159			
MH Tx need, percent	1%	1%	1%	1%	1%				3%	3%	3%	3%	3%			
Number of persons with MH IP	1,717	2,033	2,174	2,471	2,877				198	228	224	225	267			
Total number of persons	150,403	165,248	179,923	189,725	201,365				7,738	7,835	7,695	7,906	8,065			
SUD Tx need, percent	4%	5%	5%	5%	6%				9%	11%	11%	11%	12%			
Number of persons with MH IP	887	1,150	1,128	1,135	1,262				91	110	111	106	107			
Total number of persons	21,006	23,400	25,020	24,356	22,658				1,007	1,004	981	927	884			
Co-occurring Tx need, percent	7%	8%	7%	7%	8%				10%	12%	13%	13%	14%			
Number of persons with MH IP	887	1,150	1,128	1,135	1,262				91	110	111	106	107			
Total number of persons	13,204	15,046	16,526	16,397	15,812				912	927	888	841	791			
No known BH Tx need, percent	0%	0%	0%	0%	0%				0%	0%	0%	0%	0%			
Number of persons with MH IP	0	0	0	0	0				0	0	0	0	0			
Total number of persons	739,349	763,979	788,843	800,407	796,267				7,437	7,559	7,780	8,140	8,001			
PERSONS AGE 0 – 4																
MH Tx need, percent	*	*	*	*	*				0%	*	*	*	*			
Number of persons with MH IP	*	*	*	*	*				0	*	*	*	*			
Total number of persons	13,103	13,385	13,884	13,859	14,971				1,406	1,362	1,292	1,338	1,439			
No known BH Tx need, percent	0%	0%	0%	0%	0%				0%	0%	0%	0%	0%			
Number of persons with MH IP	0	0	0	0	0				0	0	0	0	0			
Total number of persons	272,846	274,451	281,841	284,411	281,499				5,440	5,442	5,621	5,876	5,757			
PERSONS AGE 5 – 11																
MH Tx need, percent	**	**	**	**	**				1%	**	**	**	**			
Number of persons with MH IP	**	**	**	**	**				39	**	**	**	**			
Total number of persons	57,137	60,009	63,910	67,020	70,769				3,338	3,445	3,453	3,560	3,581			
No known BH Tx need, percent	0%	0%	0%	0%	0%				0%	0%	0%	0%	0%			
Number of persons with MH IP	0	0	0	0	0				0	0	0	0	0			
Total number of persons	259,327	267,036	277,399	283,081	282,869				1,401	1,468	1,483	1,547	1,493			
PERSONS AGE 12 – 17																
MH Tx need, percent	2%	2%	2%	2%	2%				**	6%	6%	6%	7%			
Number of persons with MH IP	1,060	1,252	1,357	1,519	1,810				**	167	155	165	187			
Total number of persons	61,633	66,718	72,565	76,762	82,037				2,764	2,737	2,596	2,591	2,604			
SUD Tx need, percent	4%	5%	5%	5%	6%				**	**	12%	12%	13%			
Number of persons with MH IP	575	724	704	684	757				**	**	100	94	96			
Total number of persons	13,836	13,820	14,136	13,332	12,486				934	894	863	772	721			
Co-occurring Tx need, percent	6%	8%	7%	7%	8%				**	**	13%	13%	15%			
Number of persons with MH IP	575	724	704	684	757				**	**	100	94	96			
Total number of persons	9,017	9,384	9,742	9,304	8,997				850	837	789	709	661			
No known BH Tx need, percent	0%	0%	0%	0%	0%				0%	0%	0%	0%	0%			
Number of persons with MH IP	0	0	0	0	0				0	0	0	0	0			
Total number of persons	158,957	161,774	165,940	169,786	169,971				537	552	546	568	594			

PERSONS AGE 18 – 20										
MH Tx need, percent	3%	2%	2%	2%	2%	*	4%	4%	3%	5%
Number of persons with MH IP	465	575	592	725	787	*	12	15	14	22
Total number of persons	18,530	25,136	29,564	32,084	33,588	230	291	354	417	441
SUD Tx need, percent	4%	4%	4%	4%	5%	*	*	9%	8%	7%
Number of persons with MH IP	312	426	424	451	505	*	*	11	12	11
Total number of persons	7,170	9,580	10,884	11,024	10,172	73	110	118	155	163
Co-occurring Tx need, percent	7%	8%	6%	6%	7%	*	*	11%	9%	8%
Number of persons with MH IP	312	426	424	451	505	*	*	11	12	11
Total number of persons	4,187	5,662	6,784	7,093	6,815	62	90	99	132	130
No known BH Tx need, percent	0%	0%	0%	0%	0%	0%	0%	0%	0%	0%
Number of persons with MH IP	0	0	0	0	0	0	0	0	0	0
Total number of persons	48,219	60,718	63,663	63,129	61,928	59	97	130	149	157

NOTES: Mental health inpatient services (MH IP) include community psychiatric, Children's Long-term Inpatient (CLIP), Child Study and Treatment Center (CSTC), and State Hospitals. *In order to protect the privacy of individuals, cells in this data product that represent 10 or fewer persons are not displayed. **Some additional cells with n>10 have been suppressed to ensure that cells with small numbers cannot be recalculated.

Behavioral Health Treatment Needs and Outcomes among Medicaid Enrolled Children in Washington State

[Back to Contents](#)

February 2021

MEASURE 5

Psychotropic Polypharmacy

INDICATOR

Proportion of children who filled four or more prescriptions for psychotropic medications in at least one month of SFY.

ALL MEDICAID:

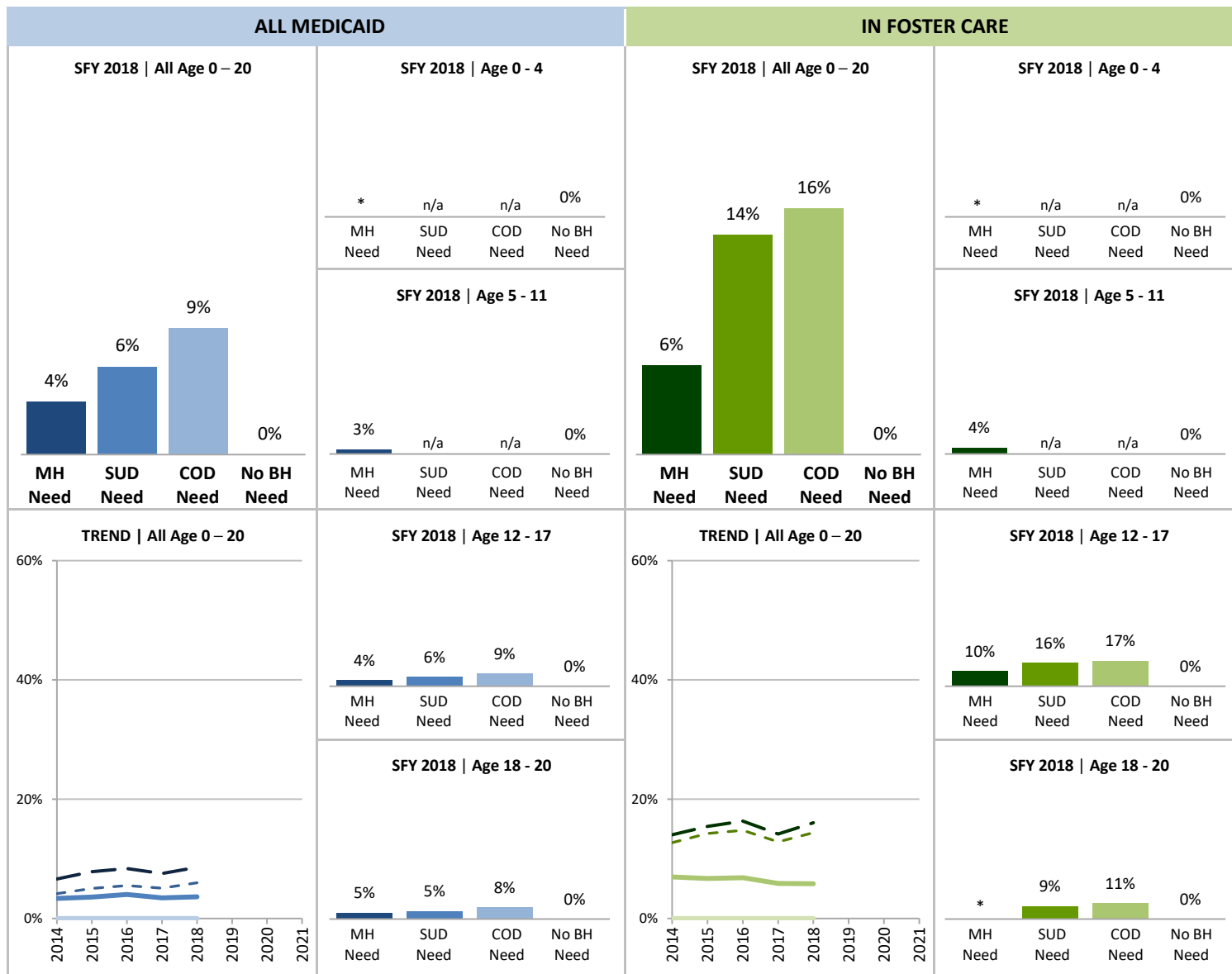
- MH Tx Need
- - - SUD Tx Need
- COD Tx Need
- No Known BH Tx Need

IN FOSTER CARE:

- MH Tx Need
- - - SUD Tx Need
- COD Tx Need
- No Known BH Tx Need

SOURCE & POPULATION

DSHS Integrated Client Databases. All children and youth with Medicaid coverage (includes SCHIP) and a subset of children and youth ever in foster care in SFY.



SUPPORTING TABLES | 5 Psychotropic Polypharmacy

	ALL MEDICAID								IN FOSTER CARE							
STATE FISCAL YEAR	2014	2015	2016	2017	2018	2019	2020	2021	2014	2015	2016	2017	2018	2019	2020	2021
TOTAL PERSONS AGE 0-20																
Total persons, percent	1%	1%	1%	1%	1%				4%	3%	3%	3%	3%			
Number of persons w/psych. poly.	5,065	5,937	7,247	6,569	7,291				539	526	527	466	470			
Total number of persons	897,554	937,581	977,260	998,091	1,004,478				15,270	15,471	15,568	16,132	16,159			
MH Tx need, percent	3%	4%	4%	3%	4%				7%	7%	7%	6%	6%			
Number of persons w/psych. poly.	5,065	5,937	7,247	6,569	7,291				539	526	527	466	470			
Total number of persons	150,403	165,248	179,923	189,725	201,365				7,738	7,835	7,695	7,906	8,065			
SUD Tx need, percent	4%	5%	6%	5%	6%				13%	14%	15%	13%	14%			
Number of persons w/psych. poly.	875	1,183	1,385	1,238	1,357				128	143	145	119	127			
Total number of persons	21,006	23,400	25,020	24,356	22,658				1,007	1,004	981	927	884			
Co-occurring Tx need, percent	7%	8%	8%	8%	9%				14%	15%	16%	14%	16%			
Number of persons w/psych. poly.	875	1,183	1,385	1,238	1,357				128	143	145	119	127			
Total number of persons	13,204	15,046	16,526	16,397	15,812				912	927	888	841	791			
No known BH Tx need, percent	0%	0%	0%	0%	0%				0%	0%	0%	0%	0%			
Number of persons w/psych. poly.	0	0	0	0	0				0	0	0	0	0			
Total number of persons	739,349	763,979	788,843	800,407	796,267				7,437	7,559	7,780	8,140	8,001			
PERSONS AGE 0 – 4																
MH Tx need, percent	<1%	<1%	<1%	<1%	<1%				*	*	*	*	*			
Number of persons w/psych. poly.	22	12	23	18	19				*	*	*	*	*			
Total number of persons	13,103	13,385	13,884	13,859	14,971				1,406	1,362	1,292	1,338	1,439			
No known BH Tx need, percent	0%	0%	0%	0%	0%				0%	0%	0%	0%	0%			
Number of persons w/psych. poly.	0	0	0	0	0				0	0	0	0	0			
Total number of persons	272,846	274,451	281,841	284,411	281,499				5,440	5,442	5,621	5,876	5,757			
PERSONS AGE 5 – 11																
MH Tx need, percent	3%	3%	4%	3%	3%				5%	4%	5%	5%	4%			
Number of persons w/psych. poly.	1,667	1,826	2,302	2,079	2,211				151	151	163	163	154			
Total number of persons	57,137	60,009	63,910	67,020	70,769				3,338	3,445	3,453	3,560	3,581			
No known BH Tx need, percent	0%	0%	0%	0%	0%				0%	0%	0%	0%	0%			
Number of persons w/psych. poly.	0	0	0	0	0				0	0	0	0	0			
Total number of persons	259,327	267,036	277,399	283,081	282,869				1,401	1,468	1,483	1,547	1,493			
PERSONS AGE 12 – 17																
MH Tx need, percent	4%	4%	5%	4%	4%				13%	12%	12%	10%	10%			
Number of persons w/psych. poly.	2,547	2,850	3,470	3,169	3,520				353	339	312	266	267			
Total number of persons	61,633	66,718	72,565	76,762	82,037				2,764	2,737	2,596	2,591	2,604			
SUD Tx need, percent	4%	5%	6%	5%	6%				**	**	15%	14%	16%			
Number of persons w/psych. poly.	552	702	788	731	801				**	**	126	107	113			
Total number of persons	13,836	13,820	14,136	13,332	12,486				934	894	863	772	721			
Co-occurring Tx need, percent	6%	7%	8%	8%	9%				**	**	16%	15%	17%			
Number of persons w/psych. poly.	552	702	788	731	801				**	**	126	107	113			
Total number of persons	9,017	9,384	9,742	9,304	8,997				850	837	789	709	661			
No known BH Tx need, percent	0%	0%	0%	0%	0%				0%	0%	0%	0%	0%			
Number of persons w/psych. poly.	0	0	0	0	0				0	0	0	0	0			
Total number of persons	158,957	161,774	165,940	169,786	169,971				537	552	546	568	594			

PERSONS AGE 18 – 20										
MH Tx need, percent	4%	5%	5%	4%	5%	**	**	**	**	**
Number of persons w/psych. poly.	829	1,249	1,452	1,303	1,541	**	**	**	**	**
Total number of persons	18,530	25,136	29,564	32,084	33,588	230	291	354	417	441
SUD Tx need, percent	5%	5%	5%	5%	5%	*	*	16%	8%	9%
Number of persons w/psych. poly.	323	481	597	507	556	*	*	19	12	14
Total number of persons	7,170	9,580	10,884	11,024	10,172	73	110	118	155	163
Co-occurring Tx need, percent	8%	8%	9%	7%	8%	*	*	19%	9%	11%
Number of persons w/psych. poly.	323	481	597	507	556	*	*	19	12	14
Total number of persons	4,187	5,662	6,784	7,093	6,815	62	90	99	132	130
No known BH Tx need, percent	0%	0%	0%	0%	0%	0%	0%	0%	0%	0%
Number of persons w/psych. poly.	0	0	0	0	0	0	0	0	0	0
Total number of persons	48,219	60,718	63,663	63,129	61,928	59	97	130	149	157

NOTES: *In order to protect the privacy of individuals, cells in this data product that represent 10 or fewer persons are not displayed. **Some additional cells with n>10 have been suppressed to ensure that cells with small numbers cannot be recalculated.

Behavioral Health Treatment Needs and Outcomes among Medicaid Enrolled Children in Washington State

[Back to Contents](#)

February 2021

MEASURE 6 Involvement in Criminal Justice System

INDICATOR

Proportion of youth age 12-20 who have any criminal justice involvement in SFY, including arrests and convictions.

ALL MEDICAID:

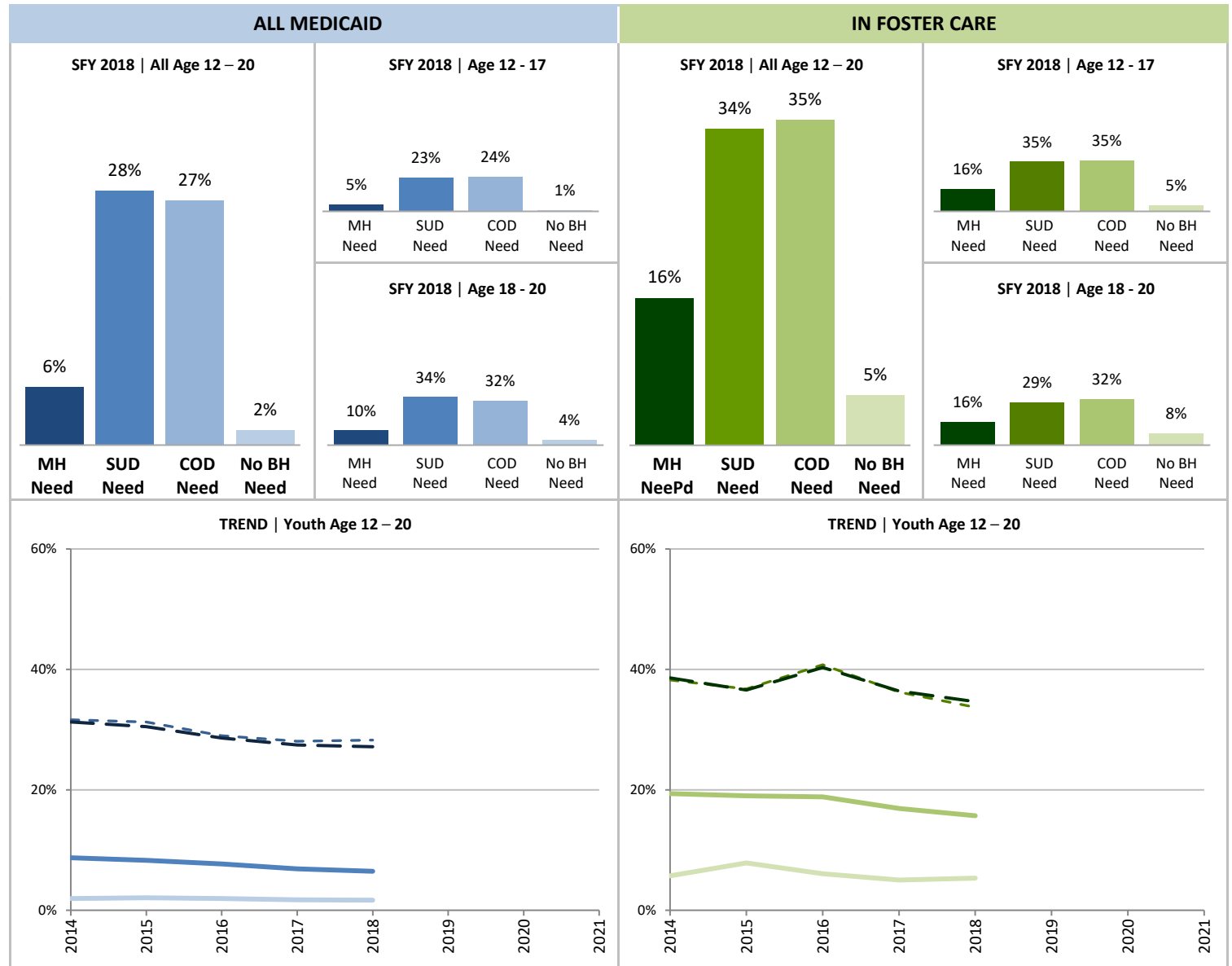
- MH Tx Need
- - SUD Tx Need
- - COD Tx Need
- - No Known BH Tx Need

IN FOSTER CARE:

- MH Tx Need
- - SUD Tx Need
- - COD Tx Need
- - No Known BH Tx Need

SOURCE & POPULATION

DSHS Integrated Client Databases: Children and youth age 12-20 with Medicaid coverage (includes SCHIP) and a subset of children and youth ever in foster care in SFY.



SUPPORTING TABLES | 6 Involvement in Criminal Justice System

	ALL MEDICAID								IN FOSTER CARE							
STATE FISCAL YEAR	2014	2015	2016	2017	2018	2019	2020	2021	2014	2015	2016	2017	2018	2019	2020	2021
PERSONS AGE 12 – 20																
All youth, percent	5%	5%	4%	4%	4%				18%	18%	17%	15%	14%			
Number of persons with CJ	13,514	14,964	14,881	13,863	13,480				647	657	639	575	542			
Total number of persons	295,141	322,700	340,226	349,720	354,370				3,685	3,754	3,719	3,811	3,889			
MH Tx need, percent	9%	8%	8%	7%	6%				19%	19%	19%	17%	16%			
Number of persons with CJ	6,989	7,621	7,876	7,508	7,486				580	576	556	509	478			
Total number of persons	80,163	91,854	102,129	108,846	115,625				2,994	3,028	2,950	3,008	3,045			
SUD Tx need, percent	32%	31%	29%	28%	28%				38%	37%	41%	36%	34%			
Number of persons with CJ	6,646	7,313	7,248	6,836	6,399				385	369	400	336	298			
Total number of persons	21,006	23,400	25,020	24,356	22,658				1,007	1,004	981	927	884			
Co-occurring Tx need, percent	31%	30%	29%	27%	27%				39%	37%	40%	36%	35%			
Number of persons with CJ	4,129	4,585	4,726	4,499	4,294				352	339	358	306	274			
Total number of persons	13,204	15,046	16,526	16,397	15,812				912	927	888	841	791			
No known BH Tx need, percent	2%	2%	2%	2%	2%				6%	8%	6%	5%	5%			
Number of persons with CJ	4,008	4,615	4,483	4,018	3,889				34	51	41	36	40			
Total number of persons	207,176	222,492	229,603	232,915	231,899				596	649	676	717	751			
PERSONS AGE 12 – 17																
All youth, percent	3%	3%	3%	3%	2%				18%	18%	17%	16%	14%			
Number of persons with CJ	7,306	7,190	6,911	6,503	6,269				604	604	561	502	451			
Total number of persons	225,409	232,928	242,899	250,576	255,497				3,385	3,346	3,216	3,222	3,258			
MH Tx need, percent	7%	7%	6%	5%	5%				20%	20%	19%	17%	16%			
Number of persons with CJ	4,426	4,365	4,310	4,091	3,973				547	534	499	453	407			
Total number of persons	61,633	66,718	72,565	76,762	82,037				2,764	2,737	2,596	2,591	2,604			
SUD Tx need, percent	27%	26%	24%	24%	23%				38%	38%	42%	39%	35%			
Number of persons with CJ	3,715	3,588	3,389	3,154	2,910				359	340	359	301	250			
Total number of persons	13,836	13,820	14,136	13,332	12,486				934	894	863	772	721			
Co-occurring Tx need, percent	29%	27%	26%	25%	24%				**	**	41%	**	35%			
Number of persons with CJ	2,586	2,574	2,487	2,321	2,137				**	**	326	**	233			
Total number of persons	9,017	9,384	9,742	9,304	8,997				850	837	789	709	661			
No known BH Tx need, percent	1%	1%	1%	1%	1%				**	**	5%	**	5%			
Number of persons with CJ	1,751	1,811	1,699	1,579	1,523				**	**	29	**	27			
Total number of persons	158,957	161,774	165,940	169,786	169,971				537	552	546	568	594			
PERSONS AGE 18 – 20																
All youth, percent	9%	9%	8%	7%	7%				14%	13%	16%	12%	14%			
Number of persons with CJ	6,208	7,774	7,970	7,360	7,211				43	53	78	73	91			
Total number of persons	69,732	89,772	97,327	99,144	98,873				300	408	503	589	631			
MH Tx need, percent	14%	13%	12%	11%	10%				14%	14%	16%	13%	16%			
Number of persons with CJ	2,563	3,256	3,566	3,417	3,513				33	42	57	56	71			
Total number of persons	18,530	25,136	29,564	32,084	33,588				230	291	354	417	441			
SUD Tx need, percent	41%	39%	35%	33%	34%				36%	26%	35%	23%	29%			
Number of persons with CJ	2,931	3,725	3,859	3,682	3,489				26	29	41	35	48			
Total number of persons	7,170	9,580	10,884	11,024	10,172				73	110	118	155	163			
Co-occurring Tx need, percent	37%	36%	33%	31%	32%				34%	27%	32%	21%	32%			
Number of persons with CJ	1,543	2,011	2,239	2,178	2,157				21	24	32	28	41			
Total number of persons	4,187	5,662	6,784	7,093	6,815				62	90	99	132	130			
No known BH Tx need, percent	5%	5%	4%	4%	4%				*	*	9%	*	8%			
Number of persons with CJ	2,257	2,804	2,784	2,439	2,366				*	*	12	*	13			
Total number of persons	48,219	60,718	63,663	63,129	61,928				59	97	130	149	157			

NOTES: Criminal justice involvement was derived from Washington State Patrol arrest records, and convictions recorded in the Washington State Institute for Public Policy Criminal History Database. *In order to protect the privacy of individuals, cells in this data product that represent 10 or fewer persons are not displayed. **Some additional cells with n>10 have been suppressed to ensure that cells with small numbers cannot be recalculated.

Behavioral Health Treatment Needs and Outcomes among Medicaid Enrolled Children in Washington State

[Back to Contents](#)

February 2021

MEASURE 7

Emergency Department Utilization

INDICATOR

Number of emergency department visits in SFY per 1,000 Medicaid (or SCHIP) member months.

ALL MEDICAID:

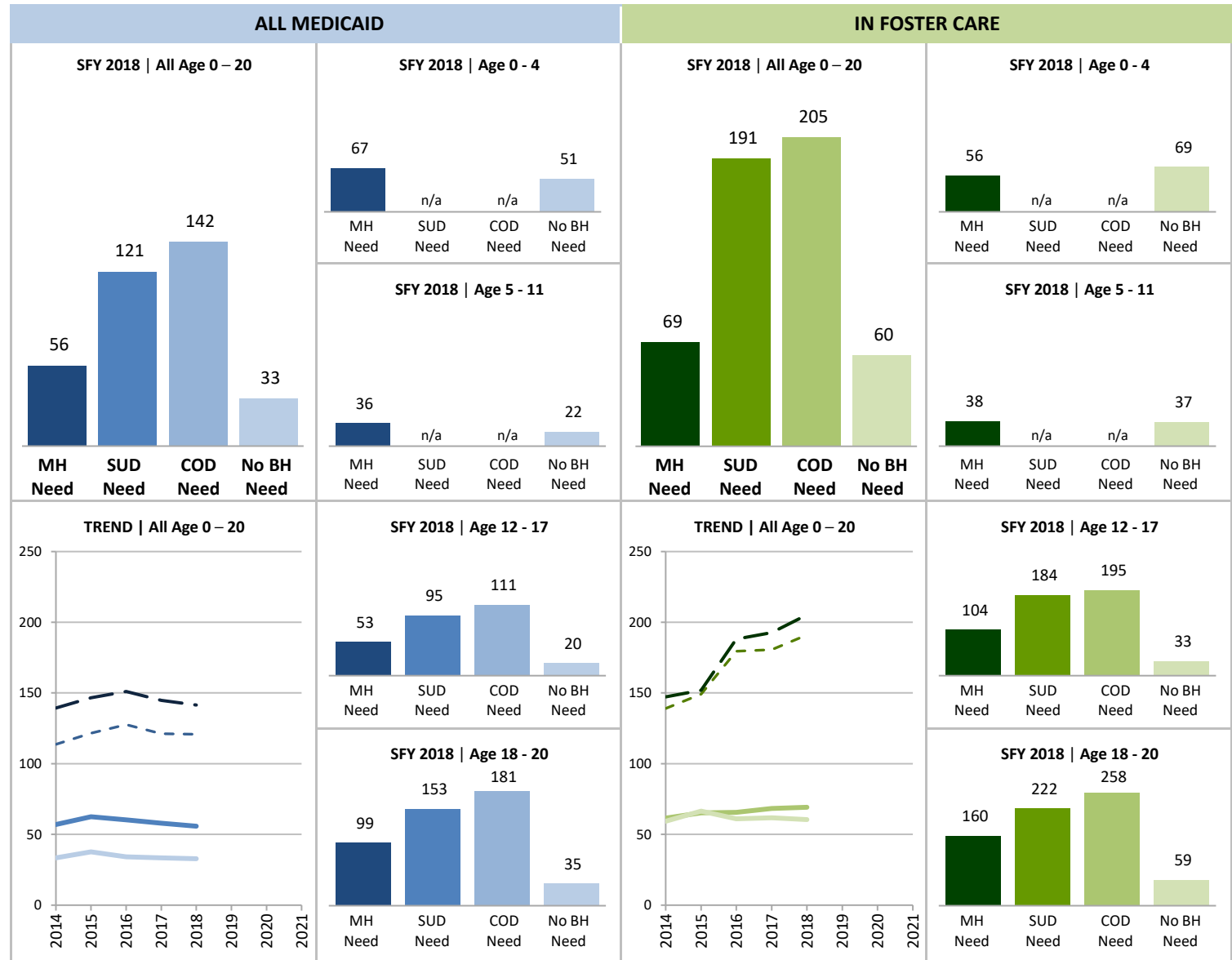
- MH Tx Need
- - SUD Tx Need
- COD Tx Need
- No Known BH Tx Need

IN FOSTER CARE:

- MH Tx Need
- - SUD Tx Need
- COD Tx Need
- No Known BH Tx Need

SOURCE & POPULATION

DSHS Integrated Client Databases. All children with Medicaid coverage (includes SCHIP) and a subset of children and youth ever in foster care in SFY.



SUPPORTING TABLES | 7 Emergency Department Utilization

	ALL MEDICAID								IN FOSTER CARE							
STATE FISCAL YEAR	2014	2015	2016	2017	2018	2019	2020	2021	2014	2015	2016	2017	2018	2019	2020	2021
TOTAL PERSONS AGE 0-20																
Total persons, rate	38	42	39	38	38				60	66	64	65	65			
Number of persons	897,554	937,581	977,260	998,091	1,004,478				15,270	15,471	15,568	16,132	16,159			
MH Tx need, rate	57	63	60	58	56				62	65	66	68	69			
Number of persons	150,403	165,248	179,923	189,725	201,365				7,738	7,835	7,695	7,906	8,065			
SUD Tx need, rate	114	122	128	121	121				139	149	179	181	191			
Number of persons	21,006	23,400	25,020	24,356	22,658				1,007	1,004	981	927	884			
Co-occurring Tx need, rate	139	147	151	145	142				147	152	188	193	205			
Number of persons	13,204	15,046	16,526	16,397	15,812				912	927	888	841	791			
No known BH Tx need, rate	34	38	34	33	33				59	66	61	62	60			
Number of persons	739,349	763,979	788,843	800,407	796,267				7,437	7,559	7,780	8,140	8,001			
PERSONS AGE 0 – 4																
MH Tx need, rate	68	76	70	68	67				61	66	57	59	56			
Number of persons	13,103	13,385	13,884	13,859	14,971				1,406	1,362	1,292	1,338	1,439			
No known BH Tx need, rate	51	58	52	51	51				69	77	70	74	69			
Number of persons	272,846	274,451	281,841	284,411	281,499				5,440	5,442	5,621	5,876	5,757			
PERSONS AGE 5 – 11																
MH Tx need, rate	36	41	38	37	36				38	43	38	39	38			
Number of persons	57,137	60,009	63,910	67,020	70,769				3,338	3,445	3,453	3,560	3,581			
No known BH Tx need, rate	22	26	23	22	22				32	40	39	30	37			
Number of persons	259,327	267,036	277,399	283,081	282,869				1,401	1,468	1,483	1,547	1,493			
PERSONS AGE 12 – 17																
MH Tx need, rate	54	59	58	55	53				88	89	95	101	104			
Number of persons	61,633	66,718	72,565	76,762	82,037				2,764	2,737	2,596	2,591	2,604			
SUD Tx need, rate	87	97	100	95	95				139	147	165	171	184			
Number of persons	13,836	13,820	14,136	13,332	12,486				934	894	863	772	721			
Co-occurring Tx need, rate	106	116	118	114	111				147	149	172	182	195			
Number of persons	9,017	9,384	9,742	9,304	8,997				850	837	789	709	661			
No known BH Tx need, rate	20	22	21	21	20				36	39	37	32	33			
Number of persons	158,957	161,774	165,940	169,786	169,971				537	552	546	568	594			
PERSONS AGE 18 – 20																
MH Tx need, rate	123	115	111	104	99				87	106	152	145	160			
Number of persons	18,530	25,136	29,564	32,084	33,588				230	291	354	417	441			
SUD Tx need, rate	165	158	164	153	153				136	167	288	230	222			
Number of persons	7,170	9,580	10,884	11,024	10,172				73	110	118	155	163			
Co-occurring Tx need, rate	210	198	198	185	181				148	175	317	253	258			
Number of persons	4,187	5,662	6,784	7,093	6,815				62	90	99	132	130			
No known BH Tx need, rate	42	40	37	37	35				32	43	25	40	59			
Number of persons	48,219	60,718	63,663	63,129	61,928				59	97	130	149	157			

Behavioral Health Treatment Needs and Outcomes among Medicaid Enrolled Children in Washington State

[Back to Contents](#)

February 2021

MEASURE 8

Injuries

INDICATOR

Proportion of children who have received an injury diagnosis at least once in SFY.

ALL MEDICAID:

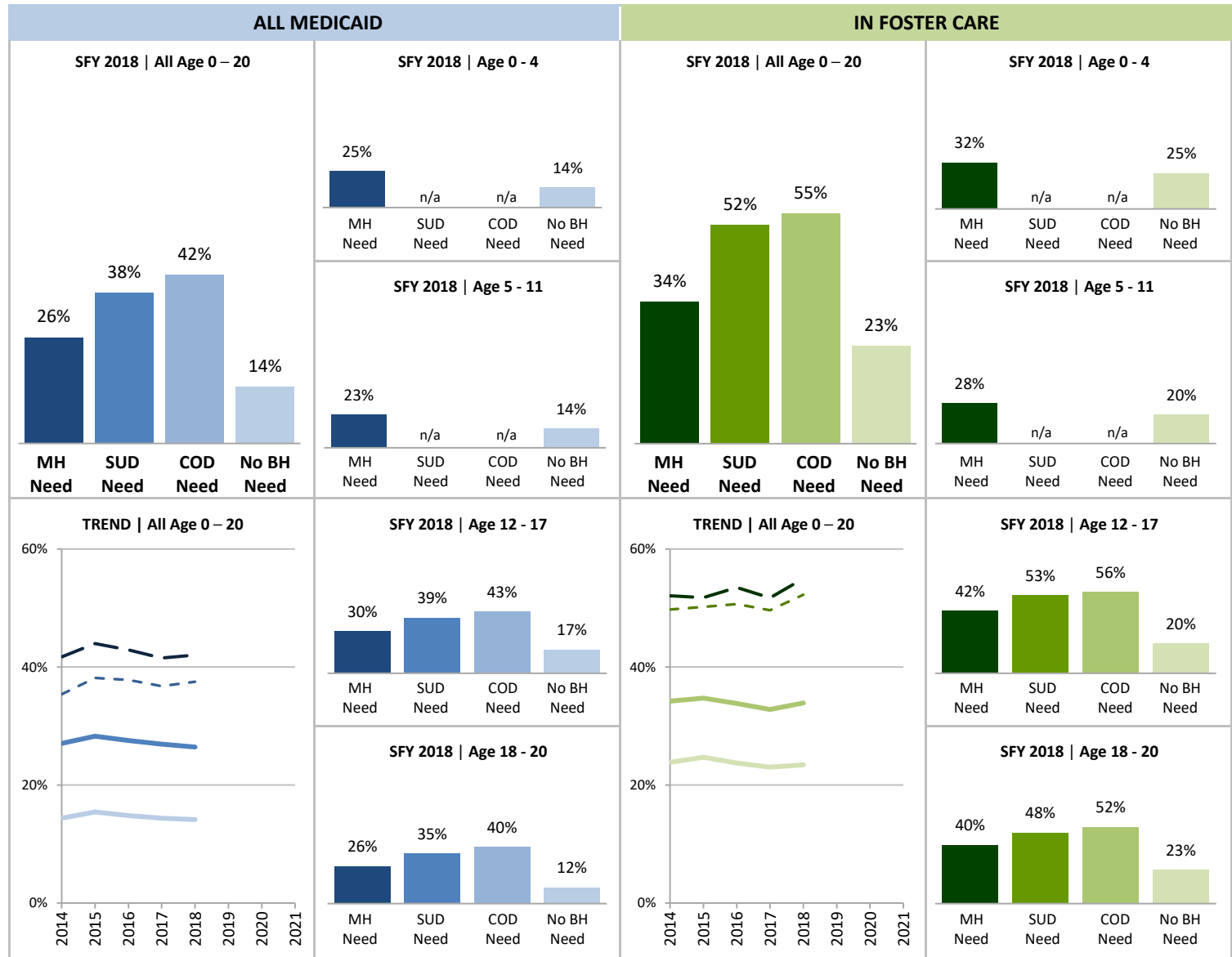
- MH Tx Need
- - - SUD Tx Need
- COD Tx Need
- No Known BH Tx Need

IN FOSTER CARE:

- MH Tx Need
- - - SUD Tx Need
- COD Tx Need
- No Known BH Tx Need

SOURCE & POPULATION

DSHS Integrated Client Databases. All children and youth with Medicaid coverage (includes SCHIP) and a subset of children and youth ever in foster care in SFY.



SUPPORTING TABLES | 8 Injuries

	ALL MEDICAID								IN FOSTER CARE							
STATE FISCAL YEAR	2014	2015	2016	2017	2018	2019	2020	2021	2014	2015	2016	2017	2018	2019	2020	2021
TOTAL PERSONS AGE 0-20																
Total persons, percent	17%	18%	17%	17%	17%						29%	30%	29%	28%	29%	
Number of persons with injury	149,097	166,939	168,965	168,335	167,706						4,450	4,613	4,468	4,494	4,636	
Total number of persons	897,554	937,581	977,260	998,091	1,004,478						15,270	15,471	15,568	16,132	16,159	
MH Tx need, percent	27%	28%	28%	27%	26%						34%	35%	34%	33%	34%	
Number of persons with injury	40,718	46,727	49,558	51,119	53,249						2,648	2,721	2,601	2,594	2,736	
Total number of persons	150,403	165,248	179,923	189,725	201,365						7,738	7,835	7,695	7,906	8,065	
SUD Tx need, percent	35%	38%	38%	37%	38%						50%	50%	51%	50%	52%	
Number of persons with injury	7,432	8,928	9,466	8,954	8,502						501	504	497	460	462	
Total number of persons	21,006	23,400	25,020	24,356	22,658						1,007	1,004	981	927	884	
Co-occurring Tx need, percent	42%	44%	43%	42%	42%						52%	52%	53%	52%	55%	
Number of persons with injury	5,511	6,617	7,093	6,810	6,646						475	480	475	435	435	
Total number of persons	13,204	15,046	16,526	16,397	15,812						912	927	888	841	791	
No known BH Tx need, percent	14%	15%	15%	14%	14%						24%	25%	24%	23%	23%	
Number of persons with injury	106,458	117,901	117,034	115,072	112,601						1,776	1,868	1,845	1,875	1,873	
Total number of persons	739,349	763,979	788,843	800,407	796,267						7,437	7,559	7,780	8,140	8,001	
PERSONS AGE 0 – 4																
MH Tx need, percent	27%	28%	26%	25%	25%						36%	35%	33%	30%	32%	
Number of persons with injury	3,601	3,734	3,615	3,496	3,728						500	482	431	404	464	
Total number of persons	13,103	13,385	13,884	13,859	14,971						1,406	1,362	1,292	1,338	1,439	
No known BH Tx need, percent	15%	15%	14%	14%	14%						25%	25%	24%	24%	25%	
Number of persons with injury	40,230	42,034	40,219	38,984	38,753						1,357	1,386	1,376	1,427	1,423	
Total number of persons	272,846	274,451	281,841	284,411	281,499						5,440	5,442	5,621	5,876	5,757	
PERSONS AGE 5 – 11																
MH Tx need, percent	24%	25%	24%	23%	23%						27%	30%	27%	28%	28%	
Number of persons with injury	13,530	14,880	15,164	15,652	16,398						916	1,019	944	984	989	
Total number of persons	57,137	60,009	63,910	67,020	70,769						3,338	3,445	3,453	3,560	3,581	
No known BH Tx need, percent	14%	15%	14%	14%	14%						20%	21%	21%	19%	20%	
Number of persons with injury	35,405	39,289	39,565	39,175	38,238						274	309	311	292	294	
Total number of persons	259,327	267,036	277,399	283,081	282,869						1,401	1,468	1,483	1,547	1,493	
PERSONS AGE 12 – 17																
MH Tx need, percent	31%	32%	31%	31%	30%						42%	41%	42%	40%	42%	
Number of persons with injury	19,071	21,029	22,594	23,512	24,252						1,156	1,118	1,085	1,046	1,106	
Total number of persons	61,633	66,718	72,565	76,762	82,037						2,764	2,737	2,596	2,591	2,604	
SUD Tx need, percent	38%	40%	39%	39%	39%						50%	51%	50%	51%	53%	
Number of persons with injury	5,264	5,576	5,530	5,167	4,893						468	457	432	393	383	
Total number of persons	13,836	13,820	14,136	13,332	12,486						934	894	863	772	721	
Co-occurring Tx need, percent	44%	46%	44%	43%	43%						52%	52%	53%	53%	56%	
Number of persons with injury	3,978	4,293	4,300	4,036	3,912						444	438	417	374	367	
Total number of persons	9,017	9,384	9,742	9,304	8,997						850	837	789	709	661	
No known BH Tx need, percent	17%	18%	18%	17%	17%						25%	27%	24%	23%	20%	
Number of persons with injury	26,457	29,238	29,698	29,405	28,483						134	149	133	132	120	
Total number of persons	158,957	161,774	165,940	169,786	169,971						537	552	546	568	594	

PERSONS AGE 18 – 20										
MH Tx need, percent	24%	28%	28%	26%	26%	33%	35%	40%	38%	40%
Number of persons with injury	4,516	7,084	8,185	8,459	8,871	76	102	141	160	177
Total number of persons	18,530	25,136	29,564	32,084	33,588	230	291	354	417	441
SUD Tx need, percent	30%	35%	36%	34%	35%	45%	43%	55%	43%	48%
Number of persons with injury	2,168	3,352	3,936	3,787	3,609	33	47	65	67	79
Total number of persons	7,170	9,580	10,884	11,024	10,172	73	110	118	155	163
Co-occurring Tx need, percent	37%	41%	41%	39%	40%	50%	47%	59%	46%	52%
Number of persons with injury	1,533	2,324	2,793	2,774	2,734	31	42	58	61	68
Total number of persons	4,187	5,662	6,784	7,093	6,815	62	90	99	132	130
No known BH Tx need, percent	9%	12%	12%	12%	12%	19%	25%	19%	16%	23%
Number of persons with injury	4,366	7,340	7,552	7,508	7,127	11	24	25	24	36
Total number of persons	48,219	60,718	63,663	63,129	61,928	59	97	130	149	157

Behavioral Health Treatment Needs and Outcomes among Medicaid Enrolled Children in Washington State

[Back to Contents](#)

February 2021

MEASURE 9

Teen Pregnancy

INDICATOR

Number of pregnant females per
1000 females age 10 to 19 in SFY.

ALL MEDICAID:

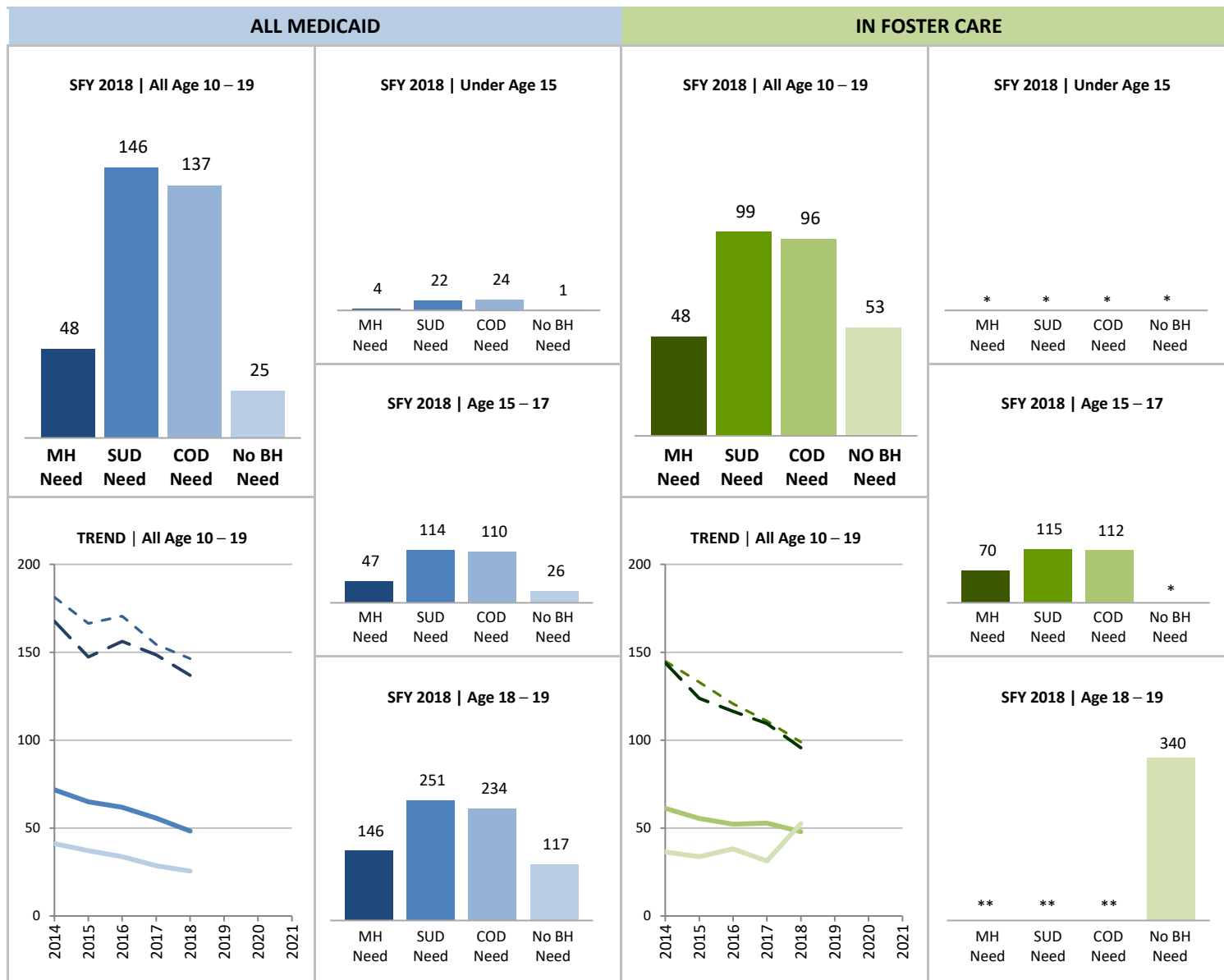
- MH Tx Need
- - - SUD Tx Need
- COD Tx Need
- No Known BH Tx Need

IN FOSTER CARE:

- MH Tx Need
- - - SUD Tx Need
- COD Tx Need
- No Known BH Tx Need

SOURCE & POPULATION

DSHS Integrated Client Databases.
Females age 10-19 with Medicaid
coverage (includes SCHIP) and a
subset of females age 10-19 ever in
foster care in SFY.



SUPPORTING TABLES | 9 Teen Pregnancy

	ALL MEDICAID								IN FOSTER CARE							
STATE FISCAL YEAR	2014	2015	2016	2017	2018	2019	2020	2021	2014	2015	2016	2017	2018	2019	2020	2021
TOTAL FEMALES AGE 10-19																
Total females, rate	51	47	44	39	34				59	54	51	49	50			
Number of females	177,621	190,040	199,188	205,128	209,669				2,493	2,490	2,491	2,551	2,615			
MH Tx need, rate	72	65	62	56	48				61	55	52	53	48			
Number of females	46,367	52,920	58,731	63,324	68,348				2,009	1,984	1,953	2,009	2,065			
SUD Tx need, rate	181	166	170	154	146				145	133	121	111	99			
Number of females	7,998	8,892	9,568	9,354	8,649				552	549	522	496	475			
Co-occurring Tx need, rate	168	147	156	148	137				144	124	116	109	96			
Number of females	5,757	6,660	7,156	7,086	6,758				507	517	481	466	439			
No known BH Tx need, rate	41	37	34	29	25				36	34	38	31	53			
Number of females	129,013	134,888	138,045	139,536	139,430				439	474	497	512	514			
BY AGE: Under Age 15																
Total females, rate	3	3	3	2	2				15	13	10	13	*			
Number of females	96,974	100,190	105,213	108,707	112,370				1,373	1,374	1,427	1,455	1,485			
MH Tx need, rate	8	6	7	5	4				17	15	13	17	*			
Number of females	21,133	23,006	25,278	26,999	29,850				1,073	1,071	1,099	1,104	1,134			
SUD Tx need, rate	36	33	36	28	22				79	*	*	*	*			
Number of females	1,651	1,719	1,782	1,658	1,528				151	151	152	151	121			
Co-occurring Tx need, rate	39	35	42	32	24				**	*	**	*	*			
Number of females	1,222	1,374	1,366	1,272	1,186				138	145	145	148	114			
No known BH Tx need, rate	2	1	2	1	1				*	*	0	0	*			
Number of females	75,412	76,839	79,519	81,322	82,178				287	297	321	348	344			
PERSONS AGE 15 – 17																
Total females, rate	58	52	48	40	36				108	88	98	70	**			
Number of females	53,346	55,398	57,588	59,702	60,812				990	914	846	859	870			
MH Tx need, rate	76	68	65	53	47				108	91	99	73	70			
Number of females	17,303	19,132	21,147	23,006	24,525				837	762	696	725	733			
SUD Tx need, rate	150	134	138	114	114				154	125	136	105	115			
Number of females	4,127	4,322	4,551	4,337	4,034				369	344	316	277	278			
Co-occurring Tx need, rate	141	122	135	113	110				152	**	**	**	112			
Number of females	3,068	3,328	3,527	3,396	3,267				342	328	288	255	258			
No known BH Tx need, rate	46	39	35	30	26				95	*	*	*	*			
Number of females	34,984	35,272	35,417	35,755	35,520				126	136	122	112	117			

PERSONS AGE 18 – 19										
Total females, rate	209	169	158	144	132	146	183	142	198	242
Number of females	27,301	34,452	36,387	36,719	36,487	130	202	218	237	260
MH Tx need, rate	233	186	170	163	146	152	166	120	189	**
Number of females	7,931	10,782	12,306	13,319	13,973	99	151	158	180	198
SUD Tx need, rate	347	295	290	270	251	344	**	*	**	**
Number of females	2,220	2,851	3,235	3,359	3,087	32	54	54	68	76
Co-occurring Tx need, rate	329	270	258	259	234	*	**	*	**	**
Number of females	1,467	1,958	2,263	2,418	2,305	27	44	48	63	67
No known BH Tx need, rate	191	154	142	127	117	*	*	*	*	340
Number of females	18,617	22,777	23,109	22,459	21,732	26	41	54	52	53

NOTES: Pregnant females were identified by having at least one pregnancy-related diagnosis (e.g. encounter for supervision of normal first pregnancy, anemia complicating pregnancy) or procedure (e.g., prenatal testing, cesarean delivery) in the SFY. Note that the population for this measure differs from that of other measures in this dashboard; it focuses on females age 10-19 in order to make results comparable to other state and national reports on teen pregnancy. *In order to protect the privacy of individuals, cells in this data product that represent 10 or fewer persons are not displayed. **Some additional cells with n>10 have been suppressed to ensure that cells with small numbers cannot be recalculated.



Behavioral Health Treatment Needs and Outcomes among Medicaid Enrolled Children in Washington State

[Back to Contents](#)

February 2021

TECHNICAL NOTES

SOURCE

- Data come from DSHS Integrated Client Databases (ICDB), a linked set of longitudinal databases with two decades of detailed risk, service utilization, expenditure, and outcome data for persons served by the Washington State Department of Social and Health Services (DSHS), Health Care Authority (HCA), and Department of Children, Youth, and Families (DCYF). The ICDB draws information from over 30 state agency data systems. See <https://www.dshs.wa.gov/sites/default/files/rda/reports/research-11-205.pdf> for more information.

POPULATION

- All children age 0 – 20 on Medicaid (including SCHIP) during the state fiscal year (SFY), and the subset of these children ever in foster care placement in the SFY. Included foster care children may enter foster care in the SFY, exit foster care in the SFY, or live in foster care placement throughout the year. In this dashboard, foster care refers to any out-of-home placement under the authority of DCYF (formerly DSHS's Children's Administration), including unpaid unlicensed relative care. "Youth" specifically refers to the 12-20 age range.

CATEGORIES OF TREATMENT NEED (2-year window)

- **Mental health treatment need (MH Tx need):** In the past 24 months, any mental health diagnosis, prescription or service recorded in state administrative data. The following diagnostic categories are included: Psychotic, Mania/Bipolar, Depressive, Anxiety, ADHD, Disruptive/Conduct/Impulse, and Adjustment. The following medication classes are included: Antipsychotic, Antimania, Antidepressant, Antianxiety, and ADHD. Mental health services include inpatient (state hospital or children's long-term inpatient (CLIP), community inpatient) and outpatient (integrated managed care, BHO, child welfare behavioral rehabilitation services). MH Tx need can occur alone (MH Tx need only) or in combination with SUD Tx need (COD Tx need). Note this definition does not capture MH Tx need that occurs outside of state administrative data including privately paid or insured mental health services.
- **Substance use disorder treatment need (SUD Tx need):** In the past 24 months, at least one substance-related diagnosis, procedure, prescription, treatment, or arrest. As substance use disorder treatment need is rare before adolescence, SUD is not measured for children under age 12. SUD Tx may occur alone (**SUD Tx need only**) or in combination with Mh Tx need (COD Tx need). Note this definition does not capture SUD Tx need that occurs outside of state administrative data including privately paid or insured SUD services.
- **Co-occurring treatment needs (COD Tx need):** Presence of both a mental health treatment need and substance use disorder treatment need during the same 24-month period. As substance use disorder treatment need is rare before adolescence, COD is not measured for children under age 12.
- **No known behavioral health treatment need (No known BH Tx need):** Neither a mental health treatment need nor a substance use disorder treatment need present during the 24-month period.



Behavioral Health Treatment Needs and Outcomes among Medicaid Enrolled Children in Washington State

[Back to Contents](#)

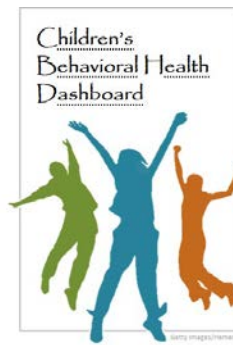
February 2021

REFERENCES

- Braciszewski, J. and R. L. Stout. (2012). "Substance use among current and former foster youth: A systematic review." *Children and Youth Services Review* , 34: 2337-2344.
- Burns, B.J., Phillips, S.D., Wagner, H.R., Barth, R.P., Kolko, D.J., Campbell, Y., and J. Landsverk. (2004). "Mental health need and access to mental health services by youths involved with child welfare: A national survey." *Journal of the American Academy of Child and Adolescent Psychiatry* , 43(8): 960-970.
- dosReis, S., Zito, J.M., Safer, D.J. and K.L. Soeken. (2001). "Mental health services for youths in foster care and disabled youths." *American Journal of Public Health* , 91(7): 1094-1099.
- Havlicek, J.R., Garcia, A.R., and D.C. Smith. (2013). "Mental health and substance use disorders among foster youth transitioning to adulthood: Past research and future directions." *Children and Youth Services Review* , 35: 194-203.
- Hawkins, J.D., Catalano, R.F., and J.Y. Miller. (1992). "Risk and protective factors for alcohol and other drug problems in adolescence and early adulthood: Implications for substance abuse prevention." *Psychological Bulletin* , 112(1): 64-105.
- Leslie L, K., Hurlburt, M.S., Landsverk, J., Barth, R., and D.J. Slymen. (2004). "Outpatient mental health services for children in foster care: A national perspective." *Child Abuse and Neglect* , 28: 697-712.
- Lucenko, B., Sharkova, I., Mancuso, D., Felver, B. (2012). "Adverse Childhood Experiences Associated with Behavioral Health Problems in Adolescence: Findings from Administrative Data for Youth 12 to 17 Enrolled in Medicaid." DSHS Research and Data Analysis: Olympia, WA.
- Patton, D., Liu, Q., Lucenko, B., Adelson, J., Mancuso, D., and Felver, B. (2018). "Childhood Adversity and Behavioral Health Costs for Adolescents in Washington State." DSHS Research and Data Analysis: Olympia, WA.
- Patton, D. A., Liu, Q., Adelson, J. D., & Lucenko, B. A. (2019). Assessing the social determinants of health care costs for Medicaid-enrolled adolescents in Washington State using administrative data. *Health Services Research* , 54(1), 52-63.

Behavioral Health Treatment Needs and Outcomes among Medicaid Enrolled Children in Washington State

February 2021



RDA CONTRIBUTORS

Yumiko Aratani, PhD • Bridget Pavelle, PhD • Barbara Lucenko, PhD • Barbara E.M. Felver, MES, MPA

ACKNOWLEDGMENTS

Several of the measures included in this dashboard were modeled from measures developed in collaboration with the Children's Behavioral Health Data and Quality Team, a diverse group of children's behavioral health stakeholders in Washington State. For more information, see HCA's website (<https://www.hca.wa.gov/about-hca/behavioral-health-recovery/children-s-behavioral-health-data-and-quality-team>).