

Behavioral Health Treatment Needs and Outcomes among Apple Health-Enrolled Children, Youth, and Young Adults in Washington State

Persons Ages 0–25 Enrolled in Apple Health, SFY 2017–SFY 2024

March 2026

This dashboard provides a snapshot of the behavioral health needs, characteristics, and outcomes of children, youth, and young adults (ages 0–25) enrolled in Medicaid (called Apple Health in Washington State). Differences between behavioral health (BH) needs and outcomes of young people enrolled in Apple Health and those in foster care are also highlighted. This information can help to identify cross-system opportunities for BH service delivery. BH needs include both mental health (MH) and substance use disorder (SUD) treatment (Tx) needs. Young people with MH Tx need have at least one MH-related diagnosis, prescription, or treatment recorded in Washington State's administrative data systems (Mancuso & Huber 2021). Young people with SUD Tx need have at least one substance use-related diagnosis, procedure, prescription, treatment, or arrest recorded in Washington State's administrative data systems.

In Section 1 of this dashboard, rates of BH needs are compared across demographic categories, foster care status, Apple Health coverage type, cross-system involvement, region, and history of abuse and neglect. Consistent with research from other states, a substantially higher prevalence of BH needs was identified among young people in foster care compared to all young people receiving publicly funded medical coverage (Braciszewski and Stout 2012; Dubois-Comtois et al. 2021; Keefe et al. 2022; Putnam-Hornstein et al. 2023). Previous research has identified past exposure to adverse experiences — including factors such as economic deprivation, instability in living situation, family conflict, trauma and abuse — as contributing factors to greater BH needs of young people in foster care, more frequent BH service utilization, and higher BH system costs (McGuire et al. 2018; Patton et al. 2018; Patton et al. 2019; Washington et al. 2018; Xu et al. 2021).

In Section 2 of this report, outcomes including BH Tx rates and utilization, psychotropic polypharmacy, juvenile legal involvement, emergency department utilization, suicidal ideation, injury rates, and pregnancy are examined over time and compared between young people in the general Washington State Apple Health population and those in foster care. Data are also stratified by specific BH needs and age groups.

The time period covered in this report includes the integration of behavioral and physical health in Apple Health contracting (starting in April 2016, and phased in by region) and the COVID-19 pandemic (March 2020 through the expiration of the public health emergency in May 2023, plus subsequent Medicaid "unwinding"). Trends we observe in this report may result from changes in the size and composition of the Apple Health population as well as changes in Apple Health contracting and delivery systems, the associated data systems, and demand for services, or other factors.



Getty Images/Hemera

CONTENTS

SECTION 1. Characteristics and Risk Factors

- [A](#) Population Reference Table, SFY 2017–2024
- [B](#) Indications of Mental Health Treatment Need, SFY 2024
Behavioral Health Treatment Needs of Apple Health-Enrolled Young People, SFY 2024
- [C](#) ...by Gender and Age Group
- [D](#) ...by Race/Ethnicity
- [E](#) ...by Service Delivery System
- [F](#) ...by Region
- [G](#) ...by County
- [H](#) ...by Abuse and Neglect History

SECTION 2. Outcome Measures

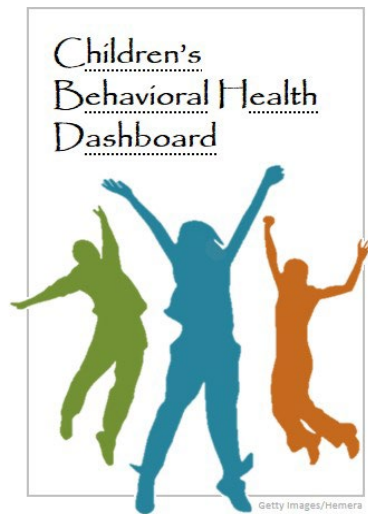
- [MEASURE 1](#) Treatment Rate for Young People with Mental Health Treatment Need
- [MEASURE 2](#) Treatment Rate for Young People with Substance Use Disorder Treatment Need and Co-Occurring Treatment Need
- [MEASURE 3](#) Behavioral Health Crisis Services
- [MEASURE 4](#) Mental Health Inpatient Services
- [MEASURE 5](#) Psychotropic Polypharmacy - Placeholder
- [MEASURE 6](#) Criminal Legal Involvement
- [MEASURE 7](#) Emergency Department Utilization
- [MEASURE 8](#) Injuries
- [MEASURE 9](#) Teen Pregnancy
- [MEASURE 10](#) Suicidal Ideation

Notes and References

- [NOTES](#) Technical Notes
- [REFERENCES](#) References
- [LAST PAGE](#) Contributors and Acknowledgements

ACRONYMS

- AH** Apple Health (Medicaid and similar public health coverage)
- BF** Basic Food, ESA, DSHS; Washington's Food assistance program including SNAP
- BH** Behavioral health (mental health and/or substance use)
- BHO** Behavioral Health Organization, a managed-care entity specific to behavioral health services
- CLIP** Children's Long-term Inpatient mental health services
- COD** Co-occurring disorder (both mental health and substance use disorder treatment needs)
- CSTC** Child Study and Treatment Center, the state-run CLIP facility
- DBHR** Division of Behavioral Health and Recovery, Health Care Authority
- DCYF** Department of Children, Youth, and Families
- DSHS** Department of Social and Health Services
- ESA** Economic Services Administration, Department of Social and Health Services
- HCA** Health Care Authority
- ICD** International Classification of Diseases
- ICDB** DSHS Integrated Client Databases
- IMC** Integrated Managed Care
- IP** Inpatient
- JR** Juvenile Rehabilitation, Department of Children, Youth, and Families; Detention and rehabilitative services for youth convicted of crimes
- MH** Mental health
- RDA** Research and Data Analysis Division, Department of Social and Health Services
- SCHIP** State Children's Health Insurance Program
- SFY** State fiscal year (from July 1 of the previous calendar year through June 30 of the stated year)
- SUD** Substance use disorder
- TANF** Cash assistance programs (Temporary Assistance for Needy Families / State Family Assistance) delivered by Economic Services Administration, DSHS
- Tx** Treatment



SECTION 1

Characteristics and Risk Factors



Behavioral Health Treatment Needs and Outcomes among Apple Health-Enrolled Children, Youth, and Young Adults in Washington State

[Back to Contents](#)

March 2026

A.1 Population Reference Table, SFY 2021–2024

SFY 2021–SFY 2024 (PRIOR YEARS AVAILABLE IN SUBSEQUENT TABLE) • BEHAVIORAL HEALTH TREATMENT NEEDS (MEASURED IN CURRENT AND PREVIOUS SFY)

STATE FISCAL YEAR	ALL APPLE HEALTH								IN FOSTER CARE							
	2021		2022		2023		2024		2021		2022		2023		2024	
	N	%	N	%	N	%	N	%	N	%	N	%	N	%	N	%
TOTAL PERSONS AGES 0–25	1,153,592	100%	1,212,188	100%	1,259,302	100%	1,255,108	100%	13,357	100%	12,437	100%	11,311	100%	10,155	100%
MH Tx need	272,997	24%	289,393	24%	303,349	24%	298,535	24%	6,808	51%	6,213	50%	5,635	50%	5,279	52%
SUD Tx need	39,758	3%	38,498	3%	39,871	3%	37,909	3%	740	6%	623	5%	587	5%	567	6%
COD Tx need (MH + SUD)	30,004	3%	29,220	2%	30,255	2%	29,242	2%	679	5%	575	5%	535	5%	520	5%
No known BH Tx need	870,841	75%	913,517	75%	946,337	75%	947,906	76%	6,488	49%	6,176	50%	5,624	50%	4,829	48%
PERSONS AGES 0–5	326,205	100%	328,152	100%	328,297	100%	329,012	100%	6,369	100%	5,855	100%	5,369	100%	4,687	100%
MH Tx need	22,456	7%	23,018	7%	23,477	7%	23,920	7%	1,600	25%	1,444	25%	1,328	25%	1,251	27%
No known BH Tx need	303,749	93%	305,134	93%	304,820	93%	305,092	93%	4,769	75%	4,411	75%	4,041	75%	3,436	73%
PERSONS AGES 6–12	347,210	100%	356,200	100%	364,219	100%	367,697	100%	3,729	100%	3,363	100%	3,119	100%	2,828	100%
MH Tx need	75,148	22%	76,105	21%	79,696	22%	81,958	22%	2,729	73%	2,378	71%	2,218	71%	2,036	72%
No known BH Tx need	272,062	78%	280,095	79%	284,523	78%	285,739	78%	1,000	27%	985	29%	901	29%	792	28%
PERSONS AGES 13–17	227,994	100%	243,372	100%	255,243	100%	259,597	100%	2,325	100%	2,099	100%	1,938	100%	1,828	100%
MH Tx need	75,506	33%	81,063	33%	86,141	34%	85,443	33%	1,828	79%	1,638	78%	1,531	79%	1,461	80%
SUD Tx need	9,086	4%	8,545	4%	9,946	4%	10,552	4%	505	22%	371	18%	398	21%	391	21%
COD Tx need (MH + SUD)	7,287	3%	6,912	3%	8,008	3%	8,459	3%	467	20%	353	17%	374	19%	366	20%
No known BH Tx need	150,689	66%	160,676	66%	167,164	65%	172,061	66%	459	20%	443	21%	383	20%	342	19%
PERSONS AGES 18–25	252,183	100%	284,464	100%	311,543	100%	298,802	100%	934	100%	1,120	100%	885	100%	812	100%
MH Tx need	99,887	40%	109,207	38%	114,035	37%	107,214	36%	651	70%	753	67%	558	63%	531	65%
SUD Tx need	30,672	12%	29,953	11%	29,925	10%	27,357	9%	235	25%	252	23%	189	21%	176	22%
COD Tx need (MH + SUD)	22,717	9%	22,308	8%	22,247	7%	20,783	7%	212	23%	222	20%	161	18%	154	19%
No known BH Tx need	144,341	57%	167,612	59%	189,830	61%	185,014	62%	260	28%	337	30%	299	34%	259	32%

SOURCE: DSHS Integrated Client Databases.

NOTES: Population includes all persons ages 0–25 years with Apple Health coverage in the SFY and the subset of those in foster care in the SFY. Note that most young people exit foster care by age 18, while a few opt to enroll in extended foster care typically until age 21. Table presents number and proportion of the indicated population/subpopulation by age group with MH Tx need, SUD Tx need, COD Tx need (both MH and SUD), or no known BH Tx need in the current or previous SFY. See technical notes section for additional detail.

A.2 Population Reference Table, SFY 2017–2020

SFY 2017 – SFY 2020 • BEHAVIORAL HEALTH TREATMENT NEEDS (MEASURED IN CURRENT AND PREVIOUS SFY)

STATE FISCAL YEAR	ALL APPLE HEALTH								IN FOSTER CARE							
	2017		2018		2019		2020		2017		2018		2019		2020	
	N	%	N	%	N	%	N	%	N	%	N	%	N	%	N	%
TOTAL PERSONS AGES 0–25	1,182,616	100%	1,183,530	100%	1,161,299	100%	1,143,470	100%	16,202	100%	16,239	100%	16,064	100%	14,911	100%
MH Tx need	255,474	22%	265,876	22%	271,536	23%	266,325	23%	8,084	50%	8,281	51%	8,311	52%	7,692	52%
SUD Tx need	51,891	4%	47,783	4%	45,704	4%	42,704	4%	898	6%	851	5%	878	5%	808	5%
Co-occurring Tx need (MH + SUD)	35,002	3%	34,959	3%	34,714	3%	31,873	3%	809	5%	779	5%	819	5%	749	5%
No known BH Tx need	910,253	77%	904,830	76%	878,773	76%	866,314	76%	8,029	50%	7,886	49%	7,694	48%	7,160	48%
PERSONS AGES 0–5	351,791	100%	349,820	100%	342,544	100%	332,832	100%	8,102	100%	8,036	100%	7,809	100%	7,129	100%
MH Tx need	24,158	7%	24,667	7%	25,032	7%	23,377	7%	2,017	25%	2,059	26%	2,044	26%	1,791	25%
No known BH Tx need	327,633	93%	325,153	93%	317,512	93%	309,455	93%	6,085	75%	5,977	74%	5,765	74%	5,338	75%
PERSONS AGES 6–12	349,488	100%	354,341	100%	352,168	100%	348,943	100%	4,785	100%	4,815	100%	4,776	100%	4,402	100%
MH Tx need	73,629	21%	77,048	22%	79,068	22%	77,239	22%	3,463	72%	3,560	74%	3,523	74%	3,301	75%
No known BH Tx need	275,859	79%	277,293	78%	273,100	78%	271,704	78%	1,322	28%	1,255	26%	1,253	26%	1,101	25%
PERSONS AGES 13–17	215,656	100%	219,227	100%	219,237	100%	220,875	100%	2,712	100%	2,732	100%	2,758	100%	2,561	100%
MH Tx need	67,806	31%	71,429	33%	74,294	34%	73,334	33%	2,177	80%	2,200	81%	2,242	81%	2,032	79%
SUD Tx need	13,326	6%	12,312	6%	11,944	5%	10,991	5%	736	27%	685	25%	682	25%	603	24%
Co-occurring Tx need (MH + SUD)	9,499	4%	9,564	4%	9,690	4%	8,663	4%	672	25%	641	23%	649	24%	567	22%
No known BH Tx need	144,023	67%	145,050	66%	142,689	65%	145,213	66%	471	17%	488	18%	483	18%	493	19%
PERSONS AGES 18–25	265,681	100%	260,142	100%	247,350	100%	240,820	100%	603	100%	656	100%	721	100%	819	100%
MH Tx need	89,881	34%	92,732	36%	93,142	38%	92,375	38%	427	71%	462	70%	502	70%	568	69%
SUD Tx need	38,565	15%	35,471	14%	33,760	14%	31,713	13%	162	27%	166	25%	196	27%	205	25%
Co-occurring Tx need (MH + SUD)	25,503	10%	25,395	10%	25,024	10%	23,210	10%	137	23%	138	21%	170	24%	182	22%
No known BH Tx need	162,738	61%	157,334	60%	145,472	59%	139,942	58%	151	25%	166	25%	193	27%	228	28%

SOURCE: DSHS Integrated Client Databases.

NOTES: Population includes all persons ages 0–25 years with Apple Health coverage in the SFY and the subset of those in foster care in the SFY. Note that most young people exit foster care by age 18, while a few opt to enroll in extended foster care typically until age 21. Table presents number and proportion of the indicated population/subpopulation by age group with MH Tx need, SUD Tx need, COD Tx need (both MH and SUD), or no known BH Tx need in the current or previous SFY. See technical notes section for additional detail.



Behavioral Health Treatment Needs and Outcomes among Apple Health-Enrolled Children, Youth, and Young Adults in Washington State

[Back to Contents](#)

March 2026

B. Indications of Mental Health Treatment Need, SFY 2024

SFY 2024 COHORT • AGES 0–25

	ALL APPLE HEALTH AGES 0-25								IN FOSTER CARE AGES 0–25							
	All		MH Tx Need		SUD Tx Need		COD Tx Need		All		MH Tx Need		SUD Tx Need		COD Tx Need	
	N	%	N	%	N	%	N	%	N	%	N	%	N	%	N	%
SFY 2024 Total	1,255,108	100%	298,535	100%	37,909	100%	29,242	100%	10,155	100%	5,279	100%	567	100%	520	100%
Included in MH Tx Need Concept																
Mental Health Diagnoses	199,135	16%	199,135	67%	21,204	56%	21,204	73%	4,373	43%	4,373	83%	439	77%	439	84%
Psychotic Disorder	6,391	1%	6,391	2%	3,192	8%	3,192	11%	208	2%	208	4%	79	14%	79	15%
Mania/Bipolar Disorder	7,927	1%	7,927	3%	3,320	9%	3,320	11%	118	1%	118	2%	62	11%	62	12%
Depression	72,956	6%	72,956	24%	12,914	34%	12,914	44%	1,173	12%	1,173	22%	301	53%	301	58%
Suicide Attempt/Self-Harm	4,563	<1%	4,563	2%	1,776	5%	1,776	6%	180	2%	180	3%	73	13%	73	14%
Suicidal Ideation	11,075	1%	11,075	4%	4,085	11%	4,085	14%	382	4%	382	7%	141	25%	141	27%
Anxiety	99,056	8%	99,056	33%	13,480	36%	13,480	46%	1,434	14%	1,434	27%	278	49%	278	53%
ADHD	59,583	5%	59,583	20%	4,330	11%	4,330	15%	1,581	16%	1,581	30%	146	26%	146	28%
Impulse/Conduct Disorder	16,395	1%	16,395	5%	1,552	4%	1,552	5%	820	8%	820	16%	87	15%	87	17%
Trauma/Stressor Disorder	60,167	5%	60,167	20%	8,493	22%	8,493	29%	2,856	28%	2,856	54%	301	53%	301	58%
Somatoform Disorder	1,578	<1%	1,578	1%	170	<1%	170	1%	19	<1%	19	<1%	*	*	*	*
Factitious Disorder	694	<1%	694	<1%	440	1%	440	2%	25	<1%	25	<1%	16	3%	16	3%
Selected Personality Disorders	2,094	<1%	2,094	1%	1,027	3%	1,027	4%	36	<1%	36	1%	26	5%	26	5%
Eating/Feeding Disorders	5,937	<1%	5,937	2%	861	2%	861	3%	118	1%	118	2%	24	4%	24	5%
Miscellaneous MH Disorders	41,246	3%	41,246	14%	6,973	18%	6,973	24%	1,638	16%	1,638	31%	212	37%	212	41%
Mental Health Prescriptions	117,496	9%	117,496	39%	15,878	42%	15,878	54%	2,003	20%	2,003	38%	335	59%	335	64%
Antipsychotic Medications	19,272	2%	19,272	6%	6,039	16%	6,039	21%	534	5%	534	10%	134	24%	134	26%
Antimania Medications	1,457	<1%	1,457	<1%	595	2%	595	2%	29	<1%	29	1%	17	3%	17	3%
Antidepressants	66,087	5%	66,087	22%	11,082	29%	11,082	38%	1,014	10%	1,014	19%	255	45%	255	49%
Antianxiety Medications	36,394	3%	36,394	12%	8,253	22%	8,253	28%	656	6%	656	12%	201	35%	201	39%
ADHD Medications	47,356	4%	47,356	16%	2,960	8%	2,960	10%	1,224	12%	1,224	23%	109	19%	109	21%
Mental Health Services	168,360	13%	168,360	56%	18,104	48%	18,104	62%	4,035	40%	4,035	76%	398	70%	398	77%
MH Outpatient Services	167,967	13%	167,967	56%	17,930	47%	17,930	61%	4,031	40%	4,031	76%	396	70%	396	76%
MH Inpatient Services	5,773	<1%	5,773	2%	3,108	8%	3,108	11%	227	2%	227	4%	94	17%	94	18%

SOURCE: DSHS Integrated Client Databases.

NOTES: Population includes persons ages 0–25 years with Apple Health coverage in SFY 2024 and the subset of those in foster care in SFY 2024. Table presents BH and developmental disability indicators in SFY 2024 for this population for indicated BH need groups measured over SFY 2023–SFY 2024. Selected personality disorders include paranoid, schizoid, and borderline. Miscellaneous MH diagnoses (in MH Tx Need) include mental disorder not otherwise specified (F99), childhood emotional disorders (F93*), and others. Other MH diagnoses (not in MH Tx Need) include other personality disorders and delirium/dementia. Other developmental disorders include other and unspecified disorders of psychological development (F88 and F89). *To protect the privacy of individuals, cells in this data product that represent 10 or fewer persons are not displayed. **Some additional cells with n>10 have been suppressed to ensure that cells with small numbers cannot be recalculated.

	ALL APPLE HEALTH AGES 0 25								IN FOSTER CARE AGES 0–25							
	All		MH Tx Need		SUD Tx Need		Co-occurring Tx Need		All		MH Tx Need		SUD Tx Need		Co-occurring Tx Need	
	N	%	N	%	N	%	N	%	N	%	N	%	N	%	N	%
SFY 2024 Total	1,255,108	100%	298,535	100%	37,909	100%	29,242	100%	10,155	100%	5,279	100%	567	100%	520	100%
Not Included in MH Tx Need Concept																
Other Behavioral Health or Related Diagnoses																
Alcohol Use Disorder	9,066	1%	7083	2%	9066	24%	7083	24%	171	2%	161	3%	171	30%	161	31%
Drug Use Disorder	19,874	2%	16420	6%	19874	52%	16420	56%	344	3%	325	6%	344	61%	325	63%
Nicotine Use Disorder	20,653	2%	15,515	5%	10,128	27%	8,847	30%	272	3%	249	5%	183	32%	177	34%
Sleep Disorder	42,678	3%	29,863	10%	4,545	12%	4,455	15%	982	10%	821	16%	117	21%	117	23%
Other Mental Health Disorders	2,230	<1%	1,753	1%	512	1%	485	2%	47	<1%	44	1%	18	3%	18	3%
Developmental Disabilities or Disorders	84,058	7%	38,167	13%	1,290	3%	1,257	4%	2,318	23%	1,259	24%	42	7%	42	8%
Intellectual Disability	6,204	<1%	4,215	1%	242	1%	237	1%	145	1%	132	3%	14	2%	14	3%
Language/Learning Disorder	49,770	4%	17,773	6%	292	1%	279	1%	1,405	14%	682	13%	14	2%	14	3%
Motor/Tic Disorder	11,282	1%	4,600	2%	136	<1%	133	<1%	493	5%	188	4%	*	*	*	*
Autism Spectrum Disorder	30,180	2%	20,153	7%	750	2%	740	3%	579	6%	463	9%	22	4%	22	4%
Congenital and Chromosomal Disorders	5,547	<1%	2,250	1%	43	<1%	39	<1%	78	1%	44	1%	*	*	*	*
Fetal Alcohol Syndrome	432	<1%	378	<1%	49	<1%	48	<1%	65	1%	57	1%	*	*	*	*
Other Developmental Disorders	15,856	1%	8,597	3%	134	<1%	132	<1%	771	8%	468	9%	*	*	*	*

SOURCE: DSHS Integrated Client Databases.

NOTES: Population includes persons ages 0–25 years with Apple Health coverage in SFY 2024 and the subset of those in foster care in SFY 2024. Table presents BH and developmental disability indicators in SFY 2024 for this population for indicated BH need groups measured over SFY 2023–SFY 2024. Selected personality disorders include paranoid, schizoid, and borderline. Miscellaneous MH diagnoses (in MH Tx Need) include mental disorder not otherwise specified (F99), childhood emotional disorders (F93*), and others. Other MH diagnoses (not in MH Tx Need) include other personality disorders and delirium/dementia. Other developmental disorders include other and unspecified disorders of psychological development (F88 and F89). *To protect the privacy of individuals, cells in this data product that represent 10 or fewer persons are not displayed. **Some additional cells with n>10 have been suppressed to ensure that cells with small numbers cannot be recalculated.

SFY 2024 PERSONS AGES 0–5, AGES 6–12

	ALL APPLE HEALTH AGES 0–5				IN FOSTER CARE AGES 0–5				ALL APPLE HEALTH AGES 6–12				IN FOSTER CARE AGES 6–12			
	All		MH Tx Need		All		MH Tx Need		All		MH Tx Need		All		MH Tx Need	
	N	%	N	%	N	%	N	%	N	%	N	%	N	%	N	%
SFY 2024 Total	329,012	100%	23,920	100%	4,687	100%	1,251	100%	367,697	100%	81,958	100%	2,828	100%	2,036	100%
Included in MH Tx Need Concept																
Mental Health Diagnoses	14,955	5%	14,955	63%	973	21%	973	78%	59,828	16%	59,828	73%	1,785	63%	1,785	88%
Psychotic Disorder	15	<1%	15	<1%	*	*	*	*	397	<1%	397	<1%	60	2%	60	3%
Mania/Bipolar Disorder	*	*	*	*	0	0%	0	0%	**	**	**	**	11	<1%	11	1%
Depression	323	<1%	323	1%	23	<1%	23	2%	9,253	3%	9,253	11%	281	10%	281	14%
Suicide Attempt/Self-Harm	56	<1%	56	<1%	*	*	*	*	675	<1%	675	1%	37	1%	37	2%
Suicidal Ideation	18	<1%	18	<1%	*	*	*	*	1,745	<1%	1,745	2%	105	4%	105	5%
Anxiety	2,531	1%	2,531	11%	105	2%	105	8%	21,037	6%	21,037	26%	448	16%	448	22%
ADHD	4,095	1%	4,095	17%	233	5%	233	19%	27,030	7%	27,030	33%	817	29%	817	40%
Impulse/Conduct Disorder	3,065	1%	3,065	13%	175	4%	175	14%	8,000	2%	8,000	10%	402	14%	402	20%
Trauma/Stressor Disorder	4,102	1%	4,102	17%	544	12%	544	43%	19,712	5%	19,712	24%	1,327	47%	1,327	65%
Somatiform Disorder	302	<1%	302	1%	*	*	*	*	325	<1%	325	<1%	*	*	*	*
Factitious Disorder	*	*	*	*	0	0%	0	0%	32	<1%	32	<1%	*	*	*	*
Selected Personality Disorders	20	<1%	20	<1%	*	*	*	*	**	**	**	**	*	*	*	*
Eating/Feeding Disorders	1,101	<1%	1,101	5%	43	1%	43	3%	952	<1%	952	1%	12	<1%	12	1%
Miscellaneous MH Disorders	4,530	1%	4,530	19%	393	8%	393	31%	12,670	3%	12,670	15%	669	24%	669	33%
Mental Health Prescriptions	2,902	1%	2,902	12%	151	3%	151	12%	28,309	8%	28,309	35%	815	29%	815	40%
Antipsychotic Medications	217	<1%	217	1%	16	<1%	16	1%	2,570	1%	2,570	3%	195	7%	195	10%
Antimania Medications	*	*	*	*	0	0%	0	0%	**	**	**	**	*	*	*	*
Antidepressants	184	<1%	184	1%	15	<1%	15	1%	7,505	2%	7,505	9%	274	10%	274	13%
Antianxiety Medications	1,144	<1%	1,144	5%	37	1%	37	3%	4,736	1%	4,736	6%	160	6%	160	8%
ADHD Medications	1,675	1%	1,675	7%	109	2%	109	9%	21,760	6%	21,760	27%	683	24%	683	34%
Mental Health Services	11,526	4%	11,526	48%	860	18%	860	69%	52,491	14%	52,491	64%	1,722	61%	1,722	85%
MH Outpatient Services	11,525	4%	11,525	48%	860	18%	860	69%	52,481	14%	52,481	64%	1,721	61%	1,721	85%
MH Inpatient Services	*	*	*	*	0	0%	0	0%	**	**	**	**	56	2%	56	3%
Not Included in MH Tx Need Concept																
Other Behavioral Health or Related Diagnoses																
Alcohol Use Disorder	0	0%	0	0%	0	0%	0	0%	0	0%	0	0%	0	0%	0	0%
Drug Use Disorder	0	0%	0	0%	0	0%	0	0%	0	0%	0	0%	0	0%	0	0%
Nicotine Use Disorder	0	0%	0	0%	0	0%	0	0%	0	0%	0	0%	0	0%	0	0%
Sleep Disorder	7,888	2%	2,496	10%	293	6%	161	13%	12,634	3%	8,091	10%	324	11%	301	15%
Other Mental Health Disorders	67	<1%	23	<1%	*	*	*	*	285	<1%	173	<1%	*	*	*	*
Developmental Disabilities or Disorders	39,657	12%	8,708	36%	1,508	32%	532	43%	24,552	7%	14,654	18%	525	19%	452	22%
Intellectual Disability	194	<1%	70	<1%	*	*	*	*	1,242	<1%	863	1%	45	2%	40	2%
Language/Learning Disorder	30,430	9%	6,294	26%	1,037	22%	365	29%	13,294	4%	7,157	9%	273	10%	225	11%
Motor/Tic Disorder	6,805	2%	1,335	6%	410	9%	106	8%	2,883	1%	1,899	2%	57	2%	57	3%
Autism Spectrum Disorder	7,514	2%	3,209	13%	189	4%	110	9%	10,768	3%	7,256	9%	225	8%	195	10%
Congenital and Chromosomal Disorders	1,450	<1%	273	1%	49	1%	19	2%	1,601	<1%	713	1%	14	<1%	*	*
Fetal Alcohol Syndrome	70	<1%	42	<1%	21	<1%	13	1%	145	<1%	133	<1%	21	1%	21	1%
Other Developmental Disorders	8,437	3%	3,110	13%	544	12%	255	20%	5,427	1%	3,921	5%	164	6%	150	7%

SOURCE: DSHS Integrated Client Databases.

NOTES: Population includes persons ages 0–25 years with Apple Health coverage in SFY 2024 and the subset of those in foster care in SFY 2024. Table presents BH and developmental disability indicators in SFY 2024 for this population for indicated BH need groups measured over SFY 2023–SFY 2024. Selected personality disorders include paranoid, schizoid, and borderline. Miscellaneous MH diagnoses (in MH Tx Need) include mental disorder not otherwise specified (F99), childhood emotional disorders (F93*), and others. Other MH diagnoses (not in MH Tx Need) include other personality disorders and delirium/dementia. Other developmental disorders include other and unspecified disorders of psychological development (F88 and F89). *To protect the privacy of individuals, cells in this data product that represent 10 or fewer persons are not displayed. **Some additional cells with n>10 have been suppressed to ensure that cells with small numbers cannot be recalculated.

SFY 2024 PERSONS AGES 13–17

	ALL APPLE HEALTH AGES 13–17								IN FOSTER CARE AGES 13–17							
	All		MH Tx Need		SUD Tx Need		Co-occurring Tx		All		MH Tx Need		SUD Tx Need		Co-occurring Tx	
	N	%	N	%	N	%	N	%	N	%	N	%	N	%	N	%
SFY 2024 Total	259,597	100%	85,443	100%	10,552	100%	8,459	100%	1,828	100%	1,461	100%	391	100%	366	100%
Included in MH Tx Need Concept																
Mental Health Diagnoses	58,675	23%	58,675	69%	6,574	62%	6,574	78%	1,215	66%	1,215	83%	320	82%	320	87%
Psychotic Disorder	1,464	1%	1,464	2%	627	6%	627	7%	111	6%	111	8%	55	14%	55	15%
Mania/Bipolar Disorder	1,377	1%	1,377	2%	490	5%	490	6%	66	4%	66	5%	39	10%	39	11%
Depression	28,266	11%	28,266	33%	4,282	41%	4,282	51%	634	35%	634	43%	215	55%	215	59%
Suicide Attempt/Self-Harm	2,337	1%	2,337	3%	893	8%	893	11%	118	6%	118	8%	62	16%	62	17%
Suicidal Ideation	4,828	2%	4,828	6%	1,595	15%	1,595	19%	219	12%	219	15%	110	28%	110	30%
Anxiety	33,100	13%	33,100	39%	4,041	38%	4,041	48%	645	35%	645	44%	196	50%	196	54%
ADHD	16,351	6%	16,351	19%	1,872	18%	1,872	22%	441	24%	441	30%	120	31%	120	33%
Impulse/Conduct Disorder	3,629	1%	3,629	4%	904	9%	904	11%	217	12%	217	15%	74	19%	74	20%
Trauma/Stressor Disorder	17,559	7%	17,559	21%	2,871	27%	2,871	34%	771	42%	771	53%	230	59%	230	63%
Somatiform Disorder	425	<1%	425	<1%	52	<1%	52	1%	*	*	*	*	*	*	*	*
Factitious Disorder	144	<1%	144	<1%	82	1%	82	1%	14	1%	14	1%	*	*	*	*
Selected Personality Disorders	245	<1%	245	<1%	116	1%	116	1%	17	1%	17	1%	14	4%	14	4%
Eating/Feeding Disorders	2,206	1%	2,206	3%	423	4%	423	5%	46	3%	46	3%	**	**	**	**
Miscellaneous MH Disorders	11,405	4%	11,405	13%	2,281	22%	2,281	27%	460	25%	460	31%	162	41%	162	44%
Mental Health Prescriptions	35,690	14%	35,690	42%	4,527	43%	4,527	54%	768	42%	768	53%	244	62%	244	67%
Antipsychotic Medications	4,853	2%	4,853	6%	1,303	12%	1,303	15%	236	13%	236	16%	95	24%	95	26%
Antimania Medications	328	<1%	328	<1%	110	1%	110	1%	22	1%	22	2%	13	3%	13	4%
Antidepressants	22,620	9%	22,620	26%	3,296	31%	3,296	39%	544	30%	544	37%	192	49%	192	52%
Antianxiety Medications	11,015	4%	11,015	13%	2,135	20%	2,135	25%	327	18%	327	22%	140	36%	140	38%
ADHD Medications	13,904	5%	13,904	16%	1,380	13%	1,380	16%	371	20%	371	25%	97	25%	97	27%
Mental Health Services	50,612	19%	50,612	59%	5,903	56%	5,903	70%	1,108	61%	1,108	76%	293	75%	293	80%
MH Outpatient Services	50,538	19%	50,538	59%	5,888	56%	5,888	70%	1,106	61%	1,106	76%	292	75%	292	80%
MH Inpatient Services	2,211	1%	2,211	3%	1,015	10%	1,015	12%	141	8%	141	10%	74	19%	74	20%
Not Included in MH Tx Need Concept																
Other Behavioral Health or Related Diagnoses																
Alcohol Use Disorder	2,396	1%	1,989	2%	2,396	23%	1,989	24%	124	7%	118	8%	124	32%	118	32%
Drug Use Disorder	5,954	2%	4,976	6%	5,954	56%	4,976	59%	263	14%	250	17%	263	67%	250	68%
Nicotine Use Disorder	3,077	1%	2,589	3%	1,804	17%	1,664	20%	159	9%	155	11%	125	32%	122	33%
Sleep Disorder	10,666	4%	8,983	11%	1,480	14%	1,455	17%	294	16%	291	20%	96	25%	96	26%
Other Mental Health Disorders	746	<1%	537	1%	98	1%	93	1%	25	1%	25	2%	**	**	**	**
Developmental Disabilities or Disorders	9,837	4%	7,524	9%	448	4%	441	5%	218	12%	210	14%	30	8%	30	8%
Intellectual Disability	1,475	1%	1,075	1%	51	<1%	51	1%	60	3%	59	4%	*	*	*	*
Language/Learning Disorder	3,435	1%	2,476	3%	148	1%	143	2%	76	4%	74	5%	*	*	*	*
Motor/Tic Disorder	1,026	<1%	853	1%	66	1%	65	1%	**	**	**	**	*	*	*	*
Autism Spectrum Disorder	5,636	2%	4,642	5%	225	2%	224	3%	120	7%	114	8%	**	**	**	**
Congenital and Chromosomal Disorders	1,067	<1%	570	1%	12	<1%	12	<1%	*	*	*	*	*	*	*	*
Fetal Alcohol Syndrome	99	<1%	95	<1%	13	<1%	13	<1%	19	1%	19	1%	*	*	*	*
Other Developmental Disorders	1,363	1%	1,084	1%	72	1%	72	1%	**	**	**	**	*	*	*	*

SOURCE: DSHS Integrated Client Databases.

NOTES: Population includes persons ages 0–25 years with Apple Health coverage in SFY 2024 and the subset of those in foster care in SFY 2024. Table presents BH and developmental disability indicators in SFY 2024 for this population for indicated BH need groups measured over SFY 2023–SFY 2024. Selected personality disorders include paranoid, schizoid, and borderline. Miscellaneous MH diagnoses (in MH Tx Need) include mental disorder not otherwise specified (F99), childhood emotional disorders (F93*), and others. Other MH diagnoses (not in MH Tx Need) include other personality disorders and delirium/dementia. Other developmental disorders include other and unspecified disorders of psychological development (F88 and F89). *To protect the privacy of individuals, cells in this data product that represent 10 or fewer persons are not displayed. **Some additional cells with n>10 have been suppressed to ensure that cells with small numbers cannot be recalculated.

SFY 2024 PERSONS AGES 18–25

	ALL APPLE HEALTH AGES 18–25								IN FOSTER CARE AGES 18–25							
	All		MH Tx Need		SUD Tx Need		Co-occurring Tx		All		MH Tx Need		SUD Tx Need		Co-occurring Tx	
	N	%	N	%	N	%	N	%	N	%	N	%	N	%	N	%
SFY 2024 Total	298,802	100%	107,214	100%	27,357	100%	20,783	100%	812	100%	531	100%	176	100%	154	100%
Included in MH Tx Need Concept																
Mental Health Diagnoses	65,677	22%	65,677	61%	14,630	53%	14,630	70%	400	49%	400	75%	119	68%	119	77%
Psychotic Disorder	4,515	2%	4,515	4%	2,565	9%	2,565	12%	**	**	**	**	24	14%	24	16%
Mania/Bipolar Disorder	6,371	2%	6,371	6%	2,830	10%	2,830	14%	41	5%	41	8%	23	13%	23	15%
Depression	35,114	12%	35,114	33%	8,632	32%	8,632	42%	235	29%	235	44%	86	49%	86	56%
Suicide Attempt/Self-Harm	1,495	1%	1,495	1%	883	3%	883	4%	**	**	**	**	11	6%	11	7%
Suicidal Ideation	4,484	2%	4,484	4%	2,490	9%	2,490	12%	**	**	**	**	31	18%	31	20%
Anxiety	42,388	14%	42,388	40%	9,439	35%	9,439	45%	236	29%	236	44%	82	47%	82	53%
ADHD	12,107	4%	12,107	11%	2,458	9%	2,458	12%	90	11%	90	17%	26	15%	26	17%
Impulse/Conduct Disorder	1,701	1%	1,701	2%	648	2%	648	3%	26	3%	26	5%	13	7%	13	8%
Trauma/Stressor Disorder	18,794	6%	18,794	18%	5,622	21%	5,622	27%	214	26%	214	40%	71	40%	71	46%
Somatiform Disorder	526	<1%	526	<1%	118	<1%	118	1%	*	*	*	*	*	*	*	*
Factitious Disorder	514	<1%	514	<1%	358	1%	358	2%	*	*	*	*	*	*	*	*
Selected Personality Disorders	1,801	1%	1,801	2%	911	3%	911	4%	15	2%	15	3%	12	7%	12	8%
Eating/Feeding Disorders	1,678	1%	1,678	2%	438	2%	438	2%	17	2%	17	3%	*	*	*	*
Miscellaneous MH Disorders	12,641	4%	12,641	12%	4,692	17%	4,692	23%	116	14%	116	22%	50	28%	50	32%
Mental Health Prescriptions	50,595	17%	50,595	47%	11,351	41%	11,351	55%	269	33%	269	51%	91	52%	91	59%
Antipsychotic Medications	11,632	4%	11,632	11%	4,736	17%	4,736	23%	87	11%	87	16%	39	22%	39	25%
Antimania Medications	1,088	<1%	1,088	1%	485	2%	485	2%	*	*	*	*	*	*	*	*
Antidepressants	35,778	12%	35,778	33%	7,786	28%	7,786	37%	181	22%	181	34%	63	36%	63	41%
Antianxiety Medications	19,499	7%	19,499	18%	6,118	22%	6,118	29%	132	16%	132	25%	61	35%	61	40%
ADHD Medications	10,017	3%	10,017	9%	1,580	6%	1,580	8%	61	8%	61	11%	12	7%	12	8%
Mental Health Services	53,731	18%	53,731	50%	12,201	45%	12,201	59%	345	42%	345	65%	105	60%	105	68%
MH Outpatient Services	53,423	18%	53,423	50%	12,042	44%	12,042	58%	344	42%	344	65%	104	59%	104	68%
MH Inpatient Services	3,065	1%	3,065	3%	2,093	8%	2,093	10%	30	4%	30	6%	20	11%	20	13%
Not Included in MH Tx Need Concept																
Other Behavioral Health or Related Diagnoses																
Alcohol Use Disorder	6,670	2%	5,094	5%	6,670	24%	5,094	25%	47	6%	43	8%	47	27%	43	28%
Drug Use Disorder	13,920	5%	11,444	11%	13,920	51%	11,444	55%	81	10%	75	14%	81	46%	75	49%
Nicotine Use Disorder	17,576	6%	12,926	12%	8,324	30%	7,183	35%	113	14%	94	18%	58	33%	55	36%
Sleep Disorder	11,490	4%	10,293	10%	3,065	11%	3,000	14%	71	9%	68	13%	21	12%	21	14%
Other Mental Health Disorders	1,132	<1%	1,020	1%	414	2%	392	2%	11	1%	11	2%	*	*	*	*
Developmental Disabilities or Disorders	10,012	3%	7,281	7%	842	3%	816	4%	67	8%	65	12%	12	7%	12	8%
Intellectual Disability	3,293	1%	2,207	2%	191	1%	186	1%	**	**	**	**	*	*	*	*
Language/Learning Disorder	2,611	1%	1,846	2%	144	1%	136	1%	19	2%	18	3%	*	*	*	*
Motor/Tic Disorder	568	<1%	513	<1%	70	<1%	68	<1%	*	*	*	*	0	0%	0	0%
Autism Spectrum Disorder	6,262	2%	5,046	5%	525	2%	516	2%	45	6%	44	8%	*	*	*	*
Congenital and Chromosomal Disorders	1,429	<1%	694	1%	31	<1%	27	<1%	*	*	*	*	*	*	*	*
Fetal Alcohol Syndrome	118	<1%	108	<1%	36	<1%	35	<1%	*	*	*	*	*	*	*	*
Other Developmental Disorders	629	<1%	482	<1%	62	<1%	60	<1%	*	*	*	*	*	*	*	*

SOURCE: DSHS Integrated Client Databases.

NOTES: Population includes persons ages 0–25 years with Apple Health coverage in SFY 2024 and the subset of those in foster care in SFY 2024. Table presents BH and developmental disability indicators in SFY 2024 for this population for indicated BH need groups measured over SFY 2023–SFY 2024. Selected personality disorders include paranoid, schizoid, and borderline. Miscellaneous MH diagnoses (in MH Tx Need) include mental disorder not otherwise specified (F99), childhood emotional disorders (F93*), and others. Other MH diagnoses (not in MH Tx Need) include other personality disorders and delirium/dementia. Other developmental disorders include other and unspecified disorders of psychological development (F88 and F89). *To protect the privacy of individuals, cells in this data product that represent 10 or fewer persons are not displayed. **Some additional cells with n>10 have been suppressed to ensure that cells with small numbers cannot be recalculated.



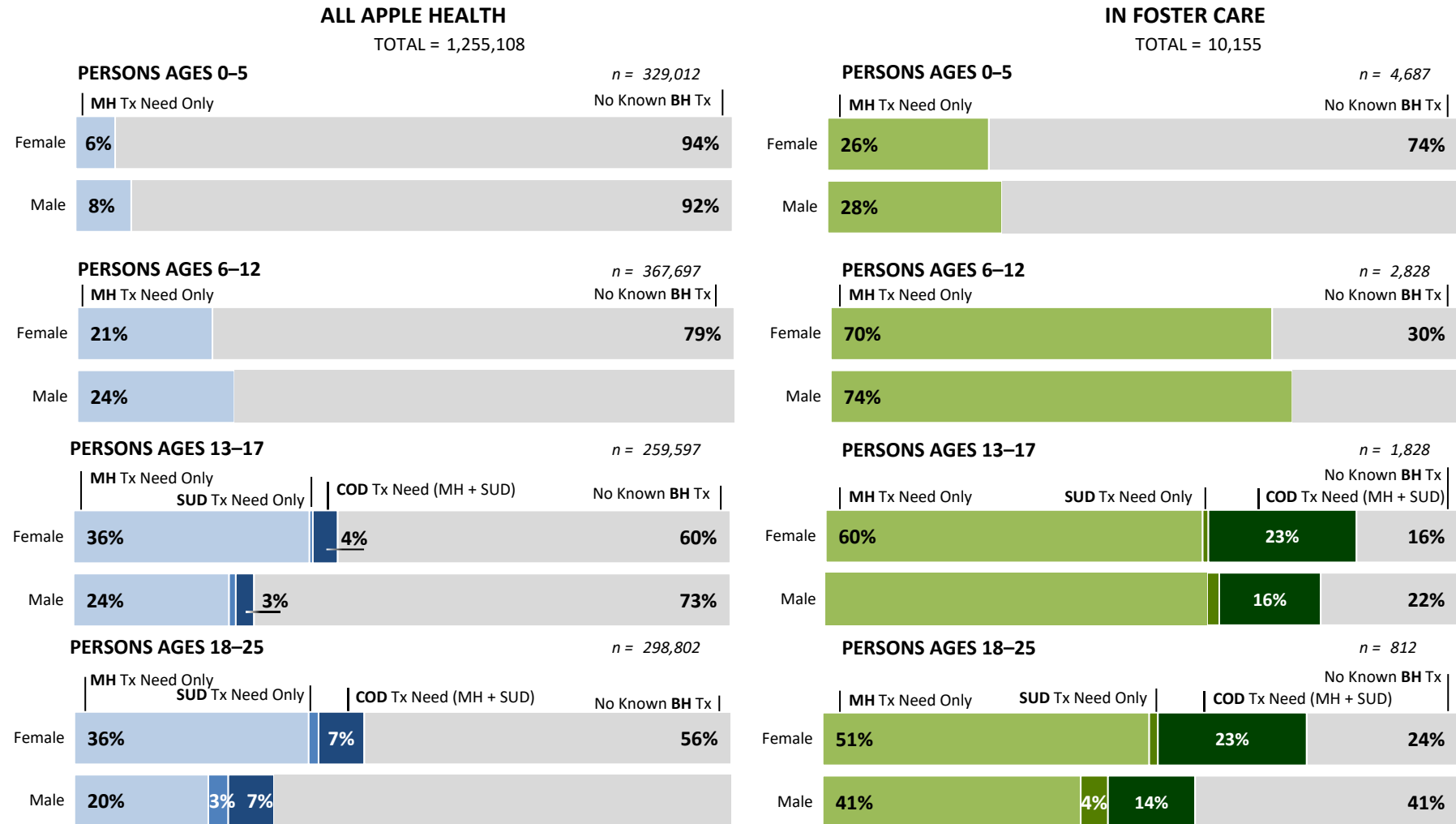
Behavioral Health Treatment Needs and Outcomes among Apple Health-Enrolled Children, Youth, and Young Adults in Washington State

[Back to Contents](#)

March 2026

C. Behavioral Health Treatment Needs of Apple Health Enrollees Ages 0–25, by Gender and Age Group, SFY 2024

SFY 2024 COHORT • BEHAVIORAL HEALTH TREATMENT NEEDS BY GENDER (MEASURED IN CURRENT AND PREVIOUS SFY)



SOURCE: DSHS Integrated Client Databases.

NOTES: Population includes persons ages 0–25 years with Apple Health coverage in SFY 2024 and the subset of those in foster care in SFY 2024. MH Tx need only includes those with MH Tx need but not SUD Tx need, and SUD Tx need only includes youth and young adults with SUD Tx need but not MH Tx need. While overlapping BH Tx Need categories are shown in the tables (MH Tx Need, SUD Tx Need, COD Tx Need), charts use mutually exclusive indicators (MH Tx Need Only, SUD Tx Need Only, COD Tx Need) such that categories sum to 100%.



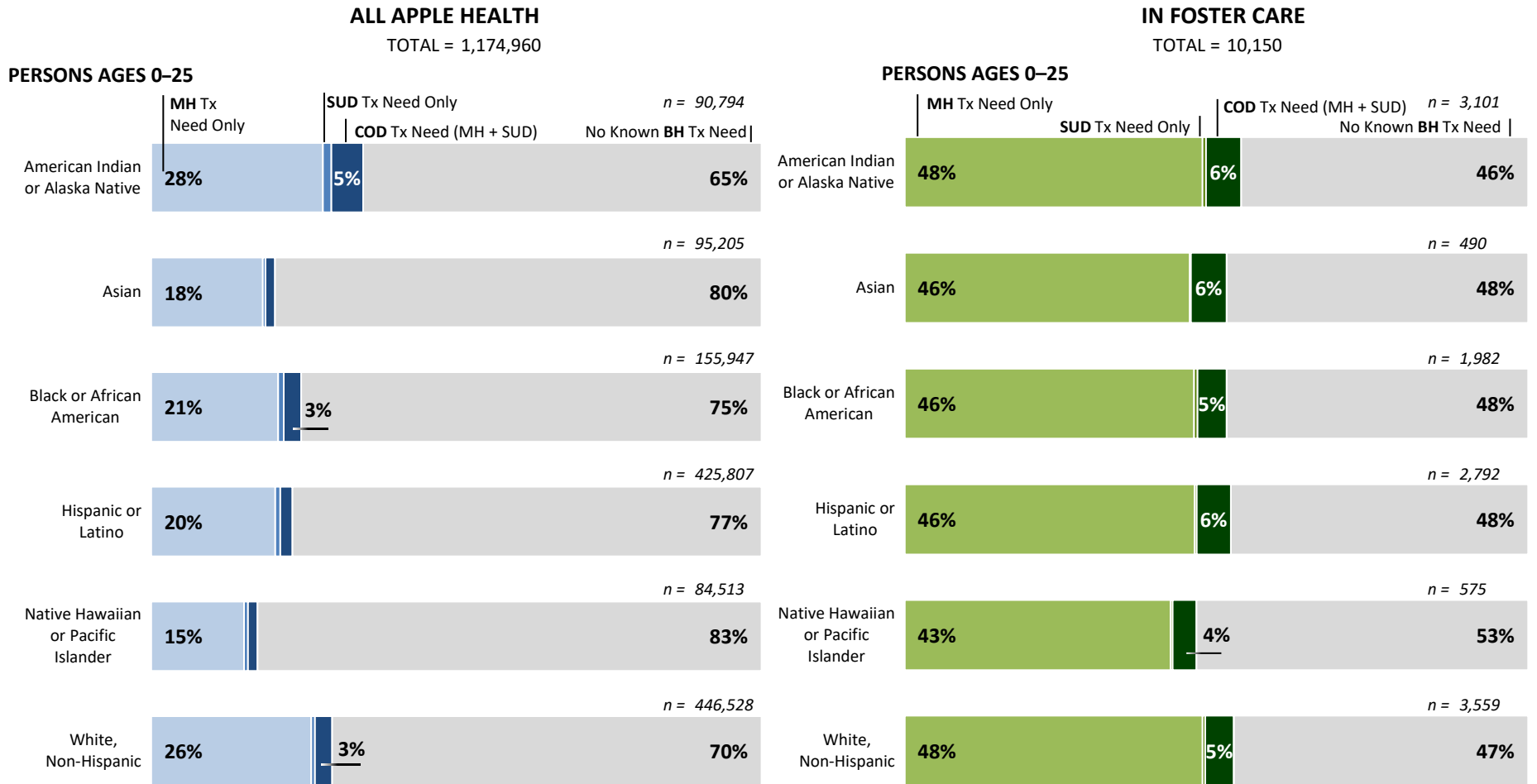
Behavioral Health Treatment Needs and Outcomes among Apple Health-Enrolled Children, Youth, and Young Adults in Washington State

[Back to Contents](#)

March 2026

D. Behavioral Health Treatment Needs of Apple Health Enrollees Ages 0–25, by Race/Ethnicity, SFY 2024

SFY 2024 COHORT • BEHAVIORAL HEALTH TREATMENT NEEDS BY RACE/ETHNICITY (MEASURED IN CURRENT AND PREVIOUS SFY)



SOURCE: DSHS Integrated Client Databases.

NOTES: Population includes persons ages 0–25 years with Apple Health coverage in SFY 2024 and the subset of those in foster care in SFY 2024. Race/ethnicity groups are not mutually exclusive except for White, Non-Hispanic. This analysis excludes persons with missing data on race/ethnicity. MH Tx need only includes those with MH Tx need but not SUD Tx need, and SUD Tx need only includes youth and young adults with SUD Tx need but not MH Tx need. While overlapping BH Tx Need categories are shown in the tables (MH Tx Need, SUD Tx Need, COD Tx Need), charts use mutually exclusive indicators (MH Tx Need Only, SUD Tx Need Only, COD Tx Need) such that categories sum to 100%.



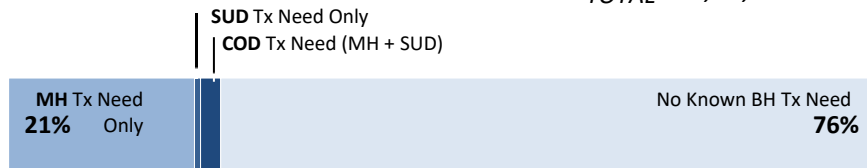
Behavioral Health Treatment Needs and Outcomes among Apple Health-Enrolled Children, Youth, and Young Adults in Washington State

E. Behavioral Health Treatment Needs of Apple Health Enrollees Ages 0–25, by Service Delivery System, SFY 2024

SFY 2024 COHORT • AGES 0–25

TOTAL AGES 0–25 WITH APPLE HEALTH COVERAGE

TOTAL = 1,255,108



BY TYPE OF COVERAGE (mutually exclusive)

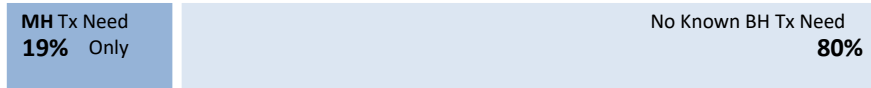
...with Disability-Related Apple Health Coverage

n = 32,472



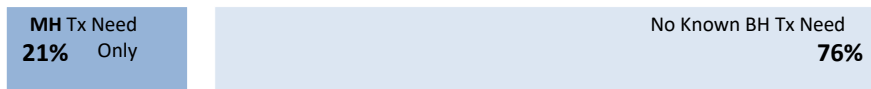
...with SCHIP Coverage

n = 60,917



...with Other Apple Health coverage (not disability or SCHIP)

n = 1,161,719



BY SERVICE UTILIZATION FOR TOTAL POPULATION WITH APPLE HEALTH

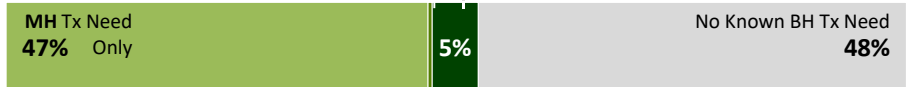
(not mutually exclusive)

...in DCYF Foster Care

SUD Tx Need Only

COD Tx Need (MH + SUD)

n = 10,155



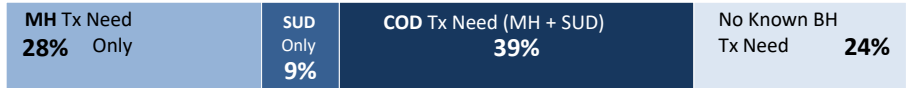
...with any DCYF Child Welfare Service

n = 72,200



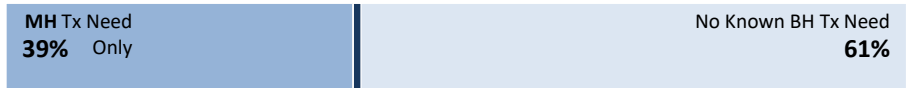
...with DCYF Juvenile Rehabilitation Services

n = 1,110



...with DSHS Developmental Disability Services

n = 33,896



...with DSHS ESA Basic Food

n = 498,855



...with DSHS ESA TANF

n = 102,155



SOURCE: DSHS Integrated Client Databases.

NOTES: Population includes persons ages 0–25 years with Apple Health coverage in SFY 2024 and subsets based on services received across different systems of care. While overlapping BH Tx Need categories are shown in the tables (MH Tx Need, SUD Tx Need, COD Tx Need), charts use mutually exclusive indicators (MH Tx Need Only, SUD Tx Need Only, COD Tx Need) such that categories sum to 100%.

SUPPORTING TABLES | E. Behavioral Health Treatment Needs of Apple Health Enrollees, by Service Delivery System, SFY 2024

DELIVERY SYSTEM	ALL APPLE HEALTH SFY 2024																			
	All Ages 0–25 with Apple Health		With Disability-Related AH Coverage		With SCHIP Coverage		With Other AH Coverage (not disability or SCHIP)		In DCYF Foster Care		With any DCYF Child Welfare Service		With DCYF Juvenile Rehabilitation Services		Eligible for or Receiving DSHS Developmental Disability Services		With DSHS ESA Basic Food		With DSHS ESA TANF	
	N	%	N	%	N	%	N	%	N	%	N	%	N	%	N	%	N	%	N	%
TOTAL PERSONS AGES 0 – 25	1,255,108	100%	32,472	100%	60,917	100%	1,161,719	100%	10,155	100%	72,200	100%	1,110	100%	33,896	100%	498,855	100%	102,155	100%
MH Tx need	298,535	24%	17,399	54%	12,080	20%	269,056	23%	5,279	52%	28,727	40%	752	68%	13,349	39%	132,220	27%	26,133	26%
SUD Tx need	37,909	3%	1,461	4%	575	1%	35,873	3%	567	6%	3,976	6%	533	48%	309	1%	20,883	4%	3,472	3%
COD Tx need (MH, SUD)	29,242	2%	1,328	4%	453	1%	27,461	2%	520	5%	3,417	5%	437	39%	293	1%	16,634	3%	2,850	3%
No known BH Tx need	947,906	76%	14,940	46%	48,715	80%	884,251	76%	4,829	48%	42,914	59%	262	24%	20,531	61%	362,386	73%	75,400	74%
PERSONS AGES 0–5	329,012	100%	2,609	100%	14,991	100%	311,412	100%	4,687	100%	23,953	100%	0	0%	17,570	100%	149,742	100%	37,879	100%
MH Tx need	23,920	7%	744	29%	835	6%	22,341	7%	1,251	27%	4,037	17%	0	0%	3,545	20%	13,229	9%	3,859	10%
No known BH Tx need	305,092	93%	1,865	71%	14,156	94%	289,071	93%	3,436	73%	19,916	83%	0	0%	14,025	80%	136,513	91%	34,020	90%
PERSONS AGES 6 – 12	367,697	100%	8,645	100%	23,856	100%	335,196	100%	2,828	100%	26,383	100%	**	**	5,542	100%	157,140	100%	34,437	100%
MH Tx need	81,958	22%	4,433	51%	4,533	19%	72,992	22%	2,036	72%	11,803	45%	**	**	3,109	56%	39,683	25%	9,657	28%
No known BH Tx need	285,739	78%	4,212	49%	19,323	81%	262,204	78%	792	28%	14,580	55%	*	*	2,433	44%	117,457	75%	24,780	72%
PERSONS AGES 13 – 17	259,597	100%	6,940	100%	18,080	100%	234,577	100%	1,828	100%	14,872	100%	768	100%	3,698	100%	98,273	100%	20,502	100%
MH Tx need	85,443	33%	4,139	60%	5,574	31%	75,730	32%	1,461	80%	8,939	60%	560	73%	2,466	67%	35,808	36%	7,830	38%
SUD Tx need	10,552	4%	278	4%	441	2%	9,833	4%	391	21%	2,085	14%	386	50%	93	3%	5,428	6%	1,468	7%
COD Tx need (MH, SUD)	8,459	3%	256	4%	359	2%	7,844	3%	366	20%	1,872	13%	330	43%	**	**	4,374	4%	1,217	6%
No known BH Tx need	172,061	66%	2,779	40%	12,424	69%	156,858	67%	342	19%	5,720	38%	152	20%	1,229	33%	61,411	62%	12,421	61%
PERSONS AGES 18 – 25	298,802	100%	14,278	100%	3,990	100%	280,534	100%	812	100%	6,992	100%	**	**	7,086	100%	93,700	100%	9,337	100%
MH Tx need	107,214	36%	8,083	57%	1,138	29%	97,993	35%	531	65%	3,948	56%	**	**	4,229	60%	43,500	46%	4,787	51%
SUD Tx need	27,357	9%	1,183	8%	134	3%	26,040	9%	176	22%	1,891	27%	147	47%	216	3%	15,455	16%	2,004	21%
COD Tx need (MH + SUD)	20,783	7%	1,072	8%	94	2%	19,617	7%	154	19%	1,545	22%	107	34%	**	**	12,260	13%	1,633	17%
No known BH Tx need	185,014	62%	6,084	43%	2,812	70%	176,118	63%	259	32%	2,698	39%	**	**	2,844	40%	47,005	50%	4,179	45%

SOURCE: DSHS Integrated Client Databases.

NOTES: Population includes persons ages 0 - 25 years with Apple Health coverage in SFY 2024. The population is examined by type of coverage and by service utilization across different systems of care. For type of coverage, the population is split into three mutually exclusive subgroups, by type of coverage in the first month of coverage in SFY 2024: (a) disability-related coverage; (b) SCHIP; (c) other Apple Health coverage (neither disability-related nor SCHIP). For service utilization, need rates are examined by subgroups that are not mutually exclusive and are based on service utilization in SFY 2024. The “eligible for or receiving DSHS developmental disability services” group includes young people who were determined eligible but did not receive paid services in the year. Rates of BH needs are compared across subgroups. *To protect the privacy of individuals, cells in this data product that represent 10 or fewer persons are not displayed. **Some additional cells with n>10 have been suppressed to ensure that cells with small numbers cannot be recalculated.



Behavioral Health Treatment Needs and Outcomes among Apple Health-Enrolled Children, Youth, and Young Adults in Washington State

[Back to Contents](#)

March 2026

F. Behavioral Health Treatment Needs of Apple Health Enrollees Ages 0–25, by Region, SFY 2024

SFY 2024 COHORT • AGES 0–25



ALL APPLE HEALTH | SFY 2024

REGION	Great Rivers		Greater Columbia		King		North Central		North Sound		Pierce		Salish		Southwest		Spokane		Thurston-Mason	
	N	%	N	%	N	%	N	%	N	%	N	%	N	%	N	%	N	%	N	%
TOTAL PERSONS AGES 0–25	60,280	100%	189,727	100%	267,270	100%	70,481	100%	187,758	100%	156,654	100%	47,186	100%	92,594	100%	128,291	100%	54,640	100%
MH Tx need	17,992	30%	44,421	23%	51,799	19%	17,327	25%	44,330	24%	36,695	23%	13,157	28%	21,150	23%	36,852	29%	14,777	27%
SUD Tx need	2,410	4%	5,967	3%	6,408	2%	2,240	3%	5,397	3%	4,602	3%	1,759	4%	2,194	2%	4,870	4%	2,057	4%
COD Tx need (MH + SUD)	1,887	3%	4,377	2%	4,879	2%	1,682	2%	4,201	2%	3,487	2%	1,428	3%	1,721	2%	3,952	3%	1,623	3%
No known BH Tx need	41,765	69%	143,716	76%	213,942	80%	52,596	75%	142,232	76%	118,844	76%	33,698	71%	70,971	77%	90,521	71%	39,429	72%
PERSONS AGES 0–5	15,768	100%	48,307	100%	69,905	100%	18,056	100%	50,013	100%	42,288	100%	12,195	100%	24,317	100%	33,492	100%	14,624	100%
MH Tx need	1,386	9%	4,043	8%	4,155	6%	1,453	8%	3,344	7%	2,915	7%	961	8%	1,634	7%	2,853	9%	1,175	8%
No known BH Tx need	14,382	91%	44,264	92%	65,750	94%	16,603	92%	46,669	93%	39,373	93%	11,234	92%	22,683	93%	30,639	91%	13,449	92%
PERSONS AGES 6–12	17,943	100%	55,424	100%	76,662	100%	20,862	100%	55,460	100%	46,714	100%	13,826	100%	27,104	100%	37,543	100%	16,118	100%
MH Tx need	5,443	30%	12,196	22%	12,555	16%	4,780	23%	12,038	22%	10,586	23%	3,762	27%	5,898	22%	10,454	28%	4,243	26%
No known BH Tx need	12,500	70%	43,228	78%	64,107	84%	16,082	77%	43,422	78%	36,128	77%	10,064	73%	21,206	78%	27,089	72%	11,875	74%
PERSONS AGES 13–17	12,583	100%	40,671	100%	54,347	100%	15,623	100%	38,419	100%	31,994	100%	9,663	100%	19,536	100%	25,873	100%	10,867	100%
MH Tx need	5,336	42%	12,667	31%	14,273	26%	5,373	34%	12,691	33%	10,672	33%	3,712	38%	6,267	32%	10,310	40%	4,139	38%
SUD Tx need	806	6%	1,711	4%	1,593	3%	715	5%	1,514	4%	1,242	4%	466	5%	635	3%	1,276	5%	594	5%
COD Tx need (MH + SUD)	666	5%	1,283	3%	1,257	2%	563	4%	1,226	3%	958	3%	398	4%	526	3%	1,097	4%	485	4%
No known BH Tx need	7,107	56%	27,576	68%	39,738	73%	10,098	65%	25,440	66%	21,038	66%	5,883	61%	13,160	67%	15,384	59%	6,619	61%
PERSONS AGES 18–25	13,986	100%	45,325	100%	66,356	100%	15,940	100%	43,866	100%	35,658	100%	11,502	100%	21,637	100%	31,383	100%	13,031	100%
MH Tx need	5,827	42%	15,515	34%	20,816	31%	5,721	36%	16,257	37%	12,522	35%	4,722	41%	7,351	34%	13,235	42%	5,220	40%
SUD Tx need	1,604	11%	4,256	9%	4,815	7%	1,525	10%	3,883	9%	3,360	9%	1,293	11%	1,559	7%	3,594	11%	1,463	11%
COD Tx need (MH + SUD)	1,221	9%	3,094	7%	3,622	5%	1,119	7%	2,975	7%	2,529	7%	1,030	9%	1,195	6%	2,855	9%	1,138	9%
No known BH Tx need	7,776	56%	28,648	63%	44,347	67%	9,813	62%	26,701	61%	22,305	63%	6,517	57%	13,922	64%	17,409	55%	7,486	57%

SOURCE: DSHS Integrated Client Databases.

NOTES: The population including persons ages 0–25 enrolled in Apple Health in SFY 2024 is split into ten mutually exclusive regions, based on HCA's Integrated Managed Care (IMC) regions. This analysis excludes a small number of young people with missing data on their county of residence.



Behavioral Health Treatment Needs and Outcomes among Apple Health-Enrolled Children, Youth, and Young Adults in Washington State

[Back to Contents](#)

March 2026

G. Behavioral Health Treatment Needs of Apple Health Enrollees Ages 0–25, by County, SFY 2024

SFY 2024 COHORT • AGES 0–25

COUNTY	ALL APPLE HEALTH SFY 2024								
	TOTAL AGES 0–25	MH Tx Need		SUD Tx Need		COD Tx Need (MH + SUD)		No Known BH Tx Need	
	N	N	%	N	%	N	%	N	%
STATEWIDE (All Regions)	1,255,108	298,535	24%	37,909	3%	29,242	2%	947,906	76%
Great Rivers	60,280	17,992	30%	2,410	4%	1,887	3%	41,765	69%
Cowlitz	22,642	7,267	32%	862	4%	709	3%	15,222	67%
Grays Harbor	15,408	4,575	30%	620	4%	479	3%	10,692	69%
Lewis	17,741	4,961	28%	760	4%	573	3%	12,593	71%
Pacific	3,778	961	25%	136	4%	98	3%	2,779	74%
Wahkiakum	711	228	32%	32	5%	28	4%	479	67%
Greater Columbia	189,727	44,421	23%	5,967	3%	4,377	2%	143,716	76%
Asotin	4,155	1,416	34%	192	5%	162	4%	2,709	65%
Benton	45,927	10,471	23%	1,324	3%	1,032	2%	35,164	77%
Columbia	679	201	30%	33	5%	27	4%	472	70%
Franklin	30,969	5,651	18%	727	2%	454	1%	25,045	81%
Garfield	373	116	31%	13	3%	11	3%	255	68%
Kittitas	6,566	1,808	28%	290	4%	239	4%	4,707	72%
Walla Walla	11,462	3,229	28%	376	3%	306	3%	8,163	71%
Whitman	6,002	1,763	29%	171	3%	139	2%	4,207	70%
Yakima	83,594	19,766	24%	2,841	3%	2,007	2%	62,994	75%
King	267,270	51,799	19%	6,408	2%	4,879	2%	213,942	80%
North Central	70,481	17,327	25%	2,240	3%	1,682	2%	52,596	75%
Chelan	17,254	4,562	26%	650	4%	486	3%	12,528	73%
Douglas	10,242	2,625	26%	345	3%	255	2%	7,527	73%
Grant	32,284	7,822	24%	886	3%	677	2%	24,253	75%
Okanogan	10,701	2,318	22%	359	3%	264	2%	8,288	77%
North Sound	187,758	44,330	24%	5,397	3%	4,201	2%	142,232	76%
Island	9,144	2,359	26%	274	3%	226	2%	6,737	74%
San Juan	1,927	491	25%	42	2%	38	2%	1,432	74%
Skagit	24,148	5,917	25%	787	3%	573	2%	18,017	75%
Snohomish	117,412	25,305	22%	3,075	3%	2,363	2%	91,395	78%
Whatcom	35,127	10,258	29%	1,219	3%	1,001	3%	24,651	70%

ALL APPLE HEALTH | SFY 2024

COUNTY	TOTAL AGES 0-25	MH Tx Need		SUD Tx Need		COD Tx Need (MH + SUD)		No Known BH Tx Need	
	N	N	%	N	%	N	%	N	%
Pierce	156,654	36,695	23%	4,602	3%	3,487	2%	118,844	76%
Salish	47,186	13,157	28%	1,759	4%	1,428	3%	33,698	71%
Clallam	11,538	3,389	29%	513	4%	408	4%	8,044	70%
Jefferson	3,407	1,003	29%	137	4%	109	3%	2,376	70%
Kitsap	32,241	8,765	27%	1,109	3%	911	3%	23,278	72%
Southwest	92,594	21,150	23%	2,194	2%	1,721	2%	70,971	77%
Clark	87,071	19,718	23%	2,044	2%	1,601	2%	66,910	77%
Klickitat	3,911	992	25%	108	3%	86	2%	2,897	74%
Skamania	1,612	440	27%	42	3%	34	2%	1,164	72%
Spokane	128,291	36,852	29%	4,870	4%	3,952	3%	90,521	71%
Adams	8,207	1,668	20%	176	2%	112	1%	6,475	79%
Ferry	1,700	368	22%	74	4%	55	3%	1,313	77%
Lincoln	2,143	559	26%	70	3%	57	3%	1,571	73%
Pend Oreille	3,024	793	26%	94	3%	78	3%	2,215	73%
Spokane	103,385	31,106	30%	4,124	4%	3,382	3%	71,537	69%
Stevens	9,832	2,358	24%	332	3%	268	3%	7,410	75%
Thurston-Mason	54,640	14,777	27%	2,057	4%	1,623	3%	39,429	72%
Mason	13,251	3,133	24%	439	3%	331	2%	10,010	76%
Thurston	41,389	11,644	28%	1,618	4%	1,292	3%	29,419	71%

SOURCE: DSHS Integrated Client Databases.

NOTES: The total population of young people ages 0-25 enrolled in Apple Health in SFY 2024 is split into ten mutually exclusive regions and 39 mutually exclusive counties. This analysis excludes a small number of young people with missing data on county of residence. *To protect the privacy of individuals, cells in this data product that represent 10 or fewer persons are not displayed. **Some additional cells with n>10 have been suppressed to ensure that cells with small numbers cannot be recalculated.



Behavioral Health Treatment Needs and Outcomes among Apple Health-Enrolled Children, Youth, and Young Adults in Washington State

[Back to Contents](#)

March 2026

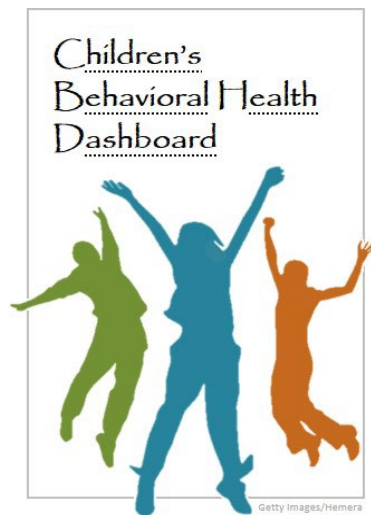
H. Behavioral Health Treatment Needs of Apple Health Enrollees, by Abuse and Neglect History, SFY 2024

SFY 2024 COHORT • BEHAVIORAL HEALTH TREATMENT NEEDS (MEASURED IN CURRENT AND PREVIOUS SFY)

ABUSE/NEGLECT HISTORY	ALL APPLE HEALTH				IN FOSTER CARE									
	Ever Abuse/Neglect		No Abuse/Neglect Allegations		Ever Abuse/Neglect		Ever Neglect		Ever Physical Abuse		Ever Sexual Abuse		No Abuse/Neglect Allegations	
	N	%	N	%	N	%	N	%	N	%	N	%	N	%
POPULATION PROPORTIONS (row %)	271,128	22%	983,980	78%	8,500	84%	7,989	79%	3,990	39%	1,308	13%	1,655	16%
PREVALENCE OF BH TX NEEDS (col. %)														
TOTAL PERSONS AGES 0 – 25	271,128	100%	983,980	100%	8,500	100%	7,989	100%	3,990	100%	1,308	100%	1,655	100%
MH Tx need	112,570	42%	185,965	19%	4,931	58%	4,719	59%	2,732	68%	1,026	78%	348	21%
SUD Tx need	19,618	7%	18,291	2%	550	6%	532	7%	375	9%	199	15%	17	1%
COD Tx need (MH + SUD)	15,816	6%	13,426	1%	505	6%	488	6%	350	9%	191	15%	15	1%
No known BH Tx need	154,756	57%	793,150	81%	3,524	41%	3,226	40%	1,233	31%	274	21%	1,305	79%
PERSONS AGES 0–5	32,645	100%	296,367	100%	3,293	100%	3,048	100%	1,157	100%	160	100%	1,394	100%
MH Tx need	6,105	19%	17,815	6%	1,038	32%	993	33%	464	40%	80	50%	213	15%
No known BH Tx need	26,540	81%	278,552	94%	2,255	68%	2,055	67%	693	60%	80	50%	1,181	85%
PERSONS AGES 6 – 12	82,107	100%	285,590	100%	2,703	100%	2,586	100%	1,373	100%	452	100%	125	100%
MH Tx need	32,026	39%	49,932	17%	1,969	73%	1,902	74%	1,087	79%	362	80%	67	54%
No known BH Tx need	50,081	61%	235,658	83%	734	27%	684	26%	286	21%	90	20%	58	46%
PERSONS AGES 13 – 17	75,079	100%	184,518	100%	1,741	100%	1,631	100%	1,019	100%	486	100%	87	100%
MH Tx need	36,478	49%	48,965	27%	1,409	81%	1,330	82%	864	85%	426	88%	52	60%
SUD Tx need	6,368	8%	4,184	2%	**	**	364	22%	263	26%	138	28%	**	**
COD Tx need (MH + SUD)	5,394	7%	3,065	2%	**	**	341	21%	251	25%	135	28%	**	**
No known BH Tx need	37,627	50%	134,434	73%	309	18%	278	17%	143	14%	57	12%	33	38%
PERSONS AGES 18 – 25	81,297	100%	217,505	100%	763	100%	724	100%	441	100%	210	100%	49	100%
MH Tx need	37,961	47%	69,253	32%	515	67%	494	68%	317	72%	158	75%	16	33%
SUD Tx need	13,250	16%	14,107	6%	**	**	168	23%	112	25%	61	29%	*	*
COD Tx need (MH + SUD)	10,422	13%	10,361	5%	**	**	147	20%	99	22%	56	27%	*	*
No known BH Tx need	40,508	50%	144,506	66%	226	30%	209	29%	111	25%	47	22%	33	67%

SOURCE: DSHS Integrated Client Databases.

NOTES: Population includes persons ages 0–25 years with Apple Health coverage in SFY 2024 and the subset of those in foster care in SFY 2024. Abuse and neglect measures reflect allegations of abuse/neglect reported on screened-in Child Protective Services (CPS) intakes, as stored in DCYF’s FamLink data system. Categories are not mutually exclusive, except for No Abuse/Neglect Allegations. Regarding No Abuse/Neglect Allegations, while most children in foster care enter due to allegations of abuse or neglect, this is not always the case, i.e., situations of substance-exposed or -affected infants, and children whose parents cannot care for them due to abandonment, incarceration, relinquishment, or death. *To protect the privacy of individuals, cells in this data product that represent 10 or fewer persons are not displayed. **Some additional cells with n>10 have been suppressed to ensure that cells with small numbers cannot be recalculated.



SECTION 2

Outcome Measures



Behavioral Health Treatment Needs and Outcomes among Apple Health-Enrolled Children, Youth, and Young Adults in Washington State

MEASURE 1

Treatment Rate for Young People with MH Treatment Need

INDICATOR

Proportion of young people with mental health treatment needs who receive mental health treatment services.

ALL APPLE HEALTH:

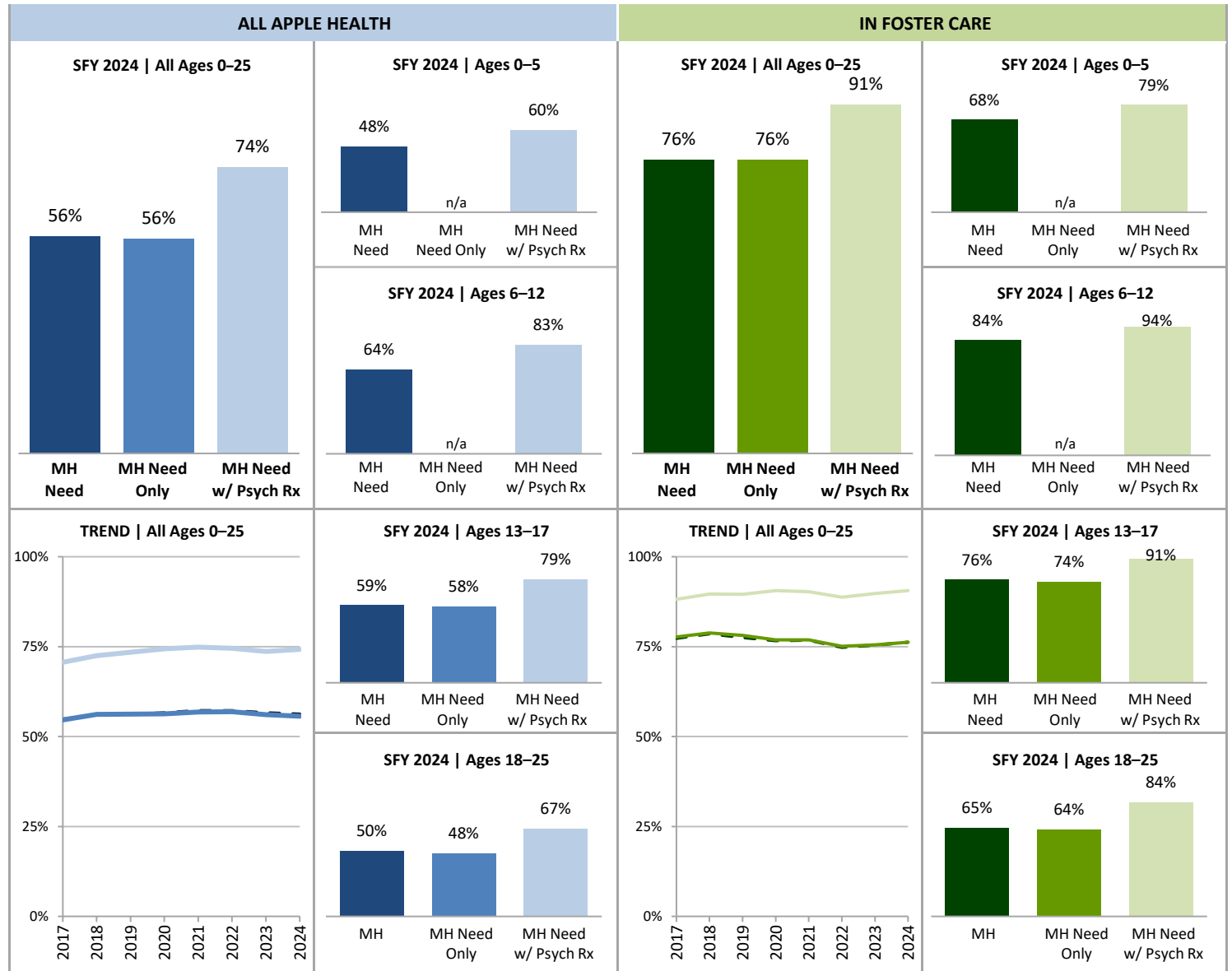
- MH Tx Need
- MH Tx Need Only
- MH Tx Need w/ Psych Rx

IN FOSTER CARE:

- MH Tx Need
- MH Tx Need Only
- MH Tx Need w/ Psych Rx

SOURCE & POPULATION

DSHS Integrated Client Databases. All Apple Health enrollees ages 0–25 in the SFY, and the subset of those in foster care in the SFY.



SUPPORTING TABLES | 1 Treatment Rate for Young People with Mental Health Treatment Need

STATE FISCAL YEAR	ALL APPLE HEALTH								IN FOSTER CARE							
	2017	2018	2019	2020	2021	2022	2023	2024	2017	2018	2019	2020	2021	2022	2023	2024
TOTAL PERSONS AGES 0–25																
MH Tx need, percent	55%	56%	56%	57%	57%	57%	57%	56%	77%	79%	78%	77%	77%	75%	75%	76%
Persons receiving MH Tx	140,030	149,084	152,468	150,697	156,159	165,521	171,604	167,866	6,249	6,507	6,445	5,896	5,230	4,648	4,251	4,022
Total number of persons	255,474	265,876	271,536	266,325	272,997	289,393	303,349	298,535	8,084	8,281	8,311	7,692	6,808	6,213	5,635	5,279
MH Tx need only (no COD), percent	55%	56%	56%	56%	57%	57%	56%	56%	78%	79%	78%	77%	77%	75%	75%	76%
Persons receiving MH Tx	120,438	129,647	133,215	132,089	138,138	148,049	153,141	149,941	5,654	5,912	5,854	5,337	4,711	4,234	3,850	3,626
Total number of persons	220,472	230,917	236,822	234,452	242,993	260,173	273,094	269,293	7,275	7,502	7,492	6,943	6,129	5,638	5,100	4,759
MH Tx need with Psych Rx, percent	71%	72%	73%	74%	75%	75%	74%	74%	88%	90%	90%	91%	90%	89%	90%	91%
Persons receiving MH Tx	72,390	75,403	77,429	77,819	82,758	87,953	91,001	87,218	2,214	2,251	2,300	2,317	2,126	1,978	1,881	1,814
Total number of persons	102,456	104,025	105,447	104,652	110,540	118,014	123,542	117,496	2,511	2,512	2,569	2,558	2,354	2,228	2,095	2,003
PERSONS AGES 0–5																
MH Tx need, percent	45%	47%	47%	47%	47%	46%	46%	48%	70%	73%	71%	71%	72%	69%	68%	68%
Persons receiving MH Tx	10,798	11,685	11,831	10,884	10,541	10,626	10,846	11,503	1,421	1,494	1,458	1,266	1,148	999	899	856
Total number of persons	24,158	24,667	25,032	23,377	22,456	23,018	23,477	23,920	2,017	2,059	2,044	1,791	1,600	1,444	1,328	1,251
MH Tx need with Psych Rx, percent	50%	51%	54%	55%	56%	53%	54%	60%	70%	67%	77%	79%	79%	71%	76%	79%
Persons receiving MH Tx	1,593	1,583	1,717	1,663	1,506	1,579	1,656	1,743	133	118	150	154	131	106	125	120
Total number of persons	3,184	3,118	3,157	3,003	2,689	2,991	3,091	2,902	191	176	195	195	166	149	165	151
PERSONS AGES 6–12																
MH Tx need, percent	65%	66%	65%	64%	62%	64%	64%	64%	85%	85%	85%	83%	83%	82%	82%	84%
Persons receiving MH Tx	48,014	50,787	51,749	49,611	46,347	48,429	50,925	52,438	2,928	3,024	2,981	2,746	2,269	1,954	1,823	1,718
Total number of persons	73,629	77,048	79,068	77,239	75,148	76,105	79,696	81,958	3,463	3,560	3,523	3,301	2,729	2,378	2,218	2,036
MH Tx need with Psych Rx, percent	82%	83%	83%	83%	82%	83%	82%	83%	95%	95%	94%	95%	95%	94%	95%	94%
Persons receiving MH Tx	22,147	22,647	22,827	22,338	21,043	21,659	22,772	23,435	1,014	1,040	979	1,019	908	801	767	769
Total number of persons	26,989	27,293	27,436	26,862	25,719	26,126	27,706	28,309	1,067	1,090	1,046	1,068	958	856	811	815
PERSONS AGES 13–17																
MH Tx need, percent	58%	60%	59%	59%	60%	62%	60%	59%	76%	79%	76%	76%	78%	77%	77%	76%
Persons receiving MH Tx	39,387	42,546	44,085	43,624	45,136	50,167	52,018	50,512	1,664	1,731	1,715	1,554	1,433	1,267	1,180	1,104
Total number of persons	67,806	71,429	74,294	73,334	75,506	81,063	86,141	85,443	2,177	2,200	2,242	2,032	1,828	1,638	1,531	1,461
MH Tx need only (no COD), percent	57%	59%	59%	59%	59%	61%	59%	58%	76%	78%	77%	75%	77%	76%	76%	74%
Persons receiving MH Tx	33,210	36,402	37,989	37,836	40,219	45,214	46,278	44,627	1,143	1,214	1,223	1,104	1,045	980	885	812
Total number of persons	58,307	61,865	64,604	64,671	68,219	74,151	78,133	76,984	1,505	1,559	1,593	1,465	1,361	1,285	1,157	1,095
MH Tx need with Psych Rx, percent	75%	77%	78%	78%	79%	80%	80%	79%	89%	90%	89%	90%	92%	91%	91%	91%
Persons receiving MH Tx	21,414	22,667	23,403	23,546	25,208	28,129	29,243	28,162	916	936	975	925	851	784	756	700
Total number of persons	28,727	29,548	30,188	30,122	31,804	35,033	36,775	35,690	1,035	1,037	1,093	1,027	925	859	833	768

PERSONS AGES 18–25																
MH Tx need, percent	47%	48%	48%	50%	54%	52%	51%	50%	55%	56%	58%	58%	58%	57%	63%	65%
Persons receiving MH Tx	41,831	44,066	44,803	46,578	54,135	56,299	57,815	53,413	236	258	291	330	380	428	349	344
Total number of persons	89,881	92,732	93,142	92,375	99,887	109,207	114,035	107,214	427	462	502	568	651	753	558	531
MH Tx need only (no COD), percent	44%	46%	46%	49%	53%	50%	49%	48%	56%	56%	58%	57%	57%	57%	61%	64%
Persons receiving MH Tx	28,416	30,773	31,646	33,758	41,031	43,780	45,092	41,373	162	180	192	221	249	301	243	240
Total number of persons	64,378	67,337	68,118	69,165	77,170	86,899	91,788	86,431	290	324	332	386	439	531	397	377
MH Tx need with Psych Rx, percent	63%	65%	66%	68%	70%	68%	67%	67%	69%	75%	83%	82%	77%	79%	81%	84%
Persons receiving MH Tx	27,236	28,506	29,482	30,272	35,001	36,586	37,330	33,878	151	157	196	219	236	287	233	225
Total number of persons	43,556	44,066	44,666	44,665	50,328	53,864	55,970	50,595	218	209	235	268	305	364	286	269

NOTES: Denominator for percentages is number of persons with indications of MH Tx need in the current or past SFY. Numerator is number of persons receiving outpatient MH services in the current SFY. Note that tabulation of outpatient MH services received in this measure reflects a 1-year window, whereas MH Tx need reflects a 2-year window. The MH Tx need only (no SUD) group is shown only for groups with persons age 13 and over as this is the earliest age at which SUD Tx need is measured. See next page for youth and young adults ages 13–25 with SUD and/or COD. MH Tx need with Psych Rx (psychotropic prescription) represents young people who filled a psychotropic prescription in the 2-year need window, a subset of the broader MH Tx need population.



Behavioral Health Treatment Needs and Outcomes among Apple Health-Enrolled Children, Youth, and Young Adults in Washington State

[Back to Contents](#)

March 2026

MEASURE 2

Treatment Rate for Young People with SUD and COD Tx Needs

INDICATOR

Proportion of young people ages 13–25 with SUD and COD treatment needs who receive appropriate behavioral health treatment services.

ALL APPLE HEALTH:

- SUD Need, SUD Tx
- SUD Need Only, SUD Tx
- COD Need, SUD Tx
- - - COD Need, MH Tx
- COD Need, MH+SUD Tx

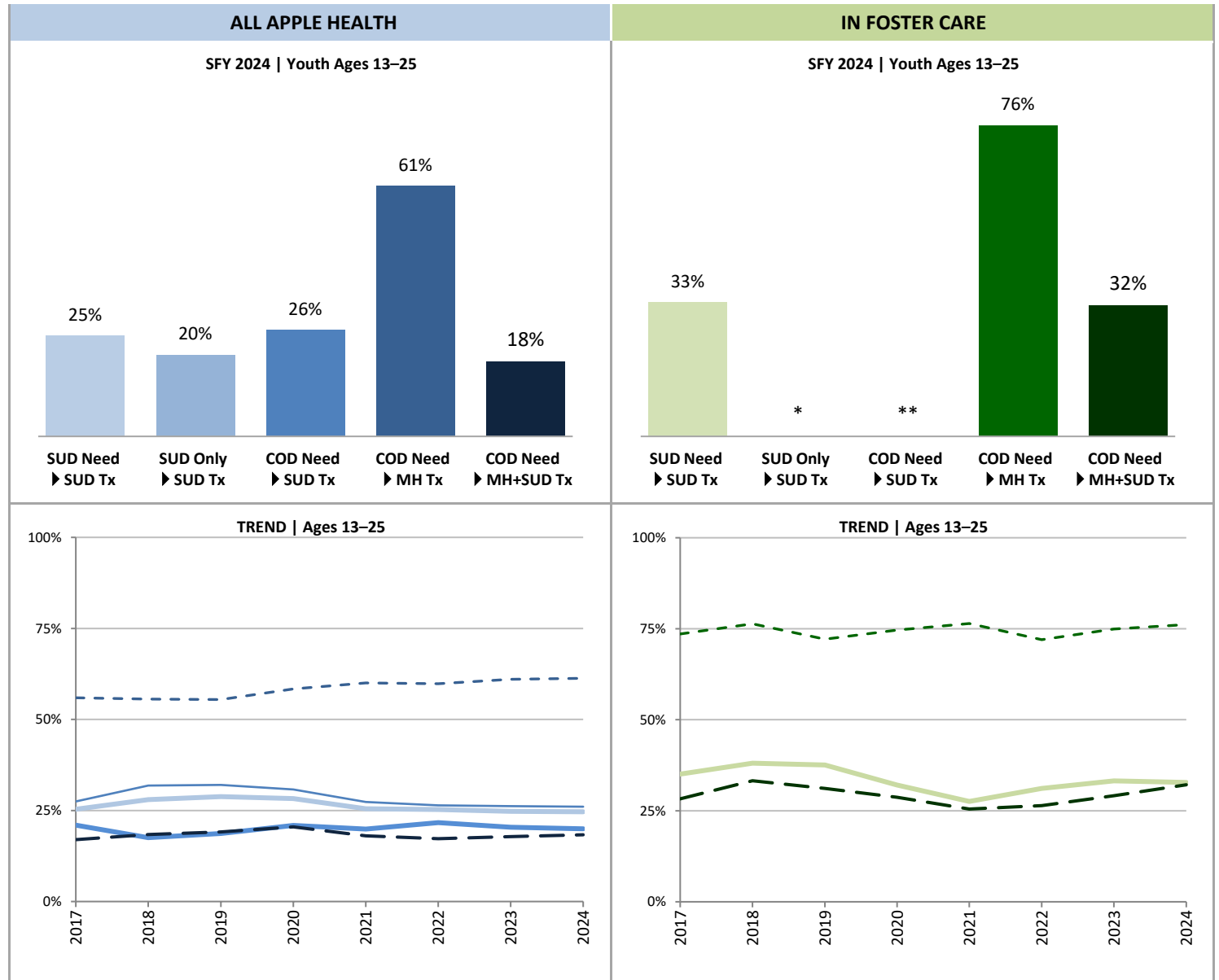
IN FOSTER CARE:

- SUD Need, SUD Tx
- SUD Need Only, SUD Tx
- COD Need, SUD Tx
- - - COD Need, MH Tx
- COD Need, MH+SUD Tx

NOTE: The “TREND | Ages 13-25” line chart for Foster Care youth and young adults (right) suppresses some trends due to small numbers.

SOURCE & POPULATION

DSHS Integrated Client Databases. All Apple Health enrollees ages 13–25 in the SFY, and the subset of those in foster care in the SFY.



SUPPORTING TABLES | 2 Treatment Rate for Young People with SUD and COD Treatment Needs

STATE FISCAL YEAR	ALL APPLE HEALTH								IN FOSTER CARE							
	2017	2018	2019	2020	2021	2022	2023	2024	2017	2018	2019	2020	2021	2022	2023	2024
PERSONS AGES 13–25																
SUD Tx need: SUD Tx percent	25%	28%	29%	28%	25%	25%	25%	25%	35%	38%	38%	32%	28%	31%	33%	33%
Persons receiving SUD Tx	13,158	13,378	13,168	12,078	10,135	9,725	9,880	9,342	315	324	330	259	204	194	195	186
Persons with SUD Tx need	51,891	47,783	45,704	42,704	39,758	38,498	39,871	37,909	898	851	878	808	740	623	587	567
SUD Tx need only (no COD): SUD Tx	21%	18%	19%	21%	20%	22%	20%	20%	26%	22%	*	29%	*	*	*	*
Persons receiving SUD Tx	3,541	2,249	2,052	2,260	1,938	2,010	1,960	1,728	23	16	*	17	*	*	*	*
Persons with SUD Tx need only	16,889	12,824	10,990	10,831	9,754	9,278	9,616	8,667	89	72	59	59	61	48	52	47
COD Tx need: SUD Tx percent	27%	32%	32%	31%	27%	26%	26%	26%	36%	40%	**	32%	**	**	**	**
Persons receiving SUD Tx	9,617	11,129	11,116	9,818	8,197	7,715	7,920	7,614	292	308	**	242	**	**	**	**
Persons with COD Tx needs	35,002	34,959	34,714	31,873	30,004	29,220	30,255	29,242	809	779	819	749	679	575	535	520
COD Tx need: MH Tx percent	56%	56%	55%	58%	60%	60%	61%	61%	74%	76%	72%	75%	76%	72%	75%	76%
Persons receiving MH Tx	19,592	19,437	19,253	18,608	18,021	17,472	18,463	17,925	595	595	591	559	519	414	401	396
Persons with COD Tx needs	35,002	34,959	34,714	31,873	30,004	29,220	30,255	29,242	809	779	819	749	679	575	535	520
COD Tx need: MH+SUD Tx percent	17%	18%	19%	20%	18%	17%	18%	18%	28%	33%	31%	29%	25%	26%	29%	32%
Persons receiving both MH+SUD Tx	5,948	6,439	6,637	6,532	5,408	5,041	5,399	5,361	229	259	255	215	173	152	156	167
Persons with COD Tx needs	35,002	34,959	34,714	31,873	30,004	29,220	30,255	29,242	809	779	819	749	679	575	535	520
PERSONS AGES 13–17																
SUD Tx need: SUD Tx percent	30%	32%	30%	26%	20%	24%	25%	23%	39%	42%	43%	35%	30%	39%	40%	38%
Persons receiving SUD Tx	3,940	3,957	3,585	2,820	1,790	2,092	2,527	2,454	285	290	292	211	150	146	158	147
Persons with SUD Tx need	13,326	12,312	11,944	10,991	9,086	8,545	9,946	10,552	736	685	682	603	505	371	398	391
SUD Tx need only (no COD): SUD Tx	28%	22%	22%	21%	14%	22%	21%	18%	**	**	*	**	*	*	*	*
Persons receiving SUD Tx	1,083	595	489	498	252	364	402	369	**	**	*	**	*	*	*	*
Persons with SUD Tx need only	3,827	2,748	2,254	2,328	1,799	1,633	1,938	2,093	64	44	33	36	38	18	24	25
COD Tx need: SUD Tx percent	30%	35%	32%	27%	21%	25%	27%	25%	**	**	**	**	**	**	**	**
Persons receiving SUD Tx	2,857	3,362	3,096	2,322	1,538	1,728	2,125	2,085	**	**	**	**	**	**	**	**
Persons with COD Tx needs	9,499	9,564	9,690	8,663	7,287	6,912	8,008	8,459	672	641	649	567	467	353	374	366
COD Tx need: MH Tx percent	65%	64%	63%	67%	67%	72%	72%	70%	78%	81%	76%	79%	83%	81%	79%	80%
Persons receiving MH Tx	6,177	6,144	6,096	5,788	4,917	4,953	5,740	5,885	521	517	492	450	388	287	295	292
Persons with COD Tx needs	9,499	9,564	9,690	8,663	7,287	6,912	8,008	8,459	672	641	649	567	467	353	374	366
COD Tx need: MH+SUD Tx percent	21%	23%	21%	21%	17%	20%	22%	20%	31%	37%	36%	31%	29%	35%	34%	36%
Persons receiving both MH+SUD Tx	1,998	2,160	2,083	1,826	1,226	1,396	1,745	1,659	208	238	232	176	134	122	128	131
Persons with COD Tx needs	9,499	9,564	9,690	8,663	7,287	6,912	8,008	8,459	672	641	649	567	467	353	374	366

STATE FISCAL YEAR	ALL APPLE HEALTH								IN FOSTER CARE							
	2017	2018	2019	2020	2021	2022	2023	2024	2017	2018	2019	2020	2021	2022	2023	2024
PERSONS AGES 18–25																
SUD Tx need: SUD Tx percent	24%	27%	28%	29%	27%	25%	25%	25%	19%	20%	19%	23%	23%	19%	20%	22%
Persons receiving SUD Tx	9,218	9,421	9,583	9,258	8,345	7,633	7,353	6,888	30	34	38	48	54	48	37	39
Persons with SUD Tx need	38,565	35,471	33,760	31,713	30,672	29,953	29,925	27,357	162	166	196	205	235	252	189	176
SUD Tx need only (no COD): SUD Tx	19%	16%	18%	21%	21%	22%	20%	21%	*	*	*	*	*	*	*	*
Persons receiving SUD Tx	2,458	1,654	1,563	1,762	1,686	1,646	1,558	1,359	*	*	*	*	*	*	*	*
Persons with SUD Tx need only	13,062	10,076	8,736	8,503	7,955	7,645	7,678	6,574	25	28	26	23	23	30	28	22
COD Tx need: SUD Tx percent	27%	31%	32%	32%	29%	27%	26%	27%	**	**	**	**	**	**	**	**
Persons receiving SUD Tx	6,760	7,767	8,020	7,496	6,659	5,987	5,795	5,529	**	**	**	**	**	**	**	**
Persons with COD Tx needs	25,503	25,395	25,024	23,210	22,717	22,308	22,247	20,783	137	138	170	182	212	222	161	154
COD Tx need: MH Tx percent	53%	52%	53%	55%	58%	56%	57%	58%	54%	57%	58%	60%	62%	57%	66%	68%
Persons receiving MH Tx	13,415	13,293	13,157	12,820	13,104	12,519	12,723	12,040	74	78	99	109	131	127	106	104
Persons with COD Tx needs	25,503	25,395	25,024	23,210	22,717	22,308	22,247	20,783	137	138	170	182	212	222	161	154
COD Tx need: MH+SUD Tx percent	15%	17%	18%	20%	18%	16%	16%	18%	15%	15%	14%	21%	18%	14%	17%	23%
Persons receiving both MH+SUD Tx	3,950	4,279	4,554	4,706	4,182	3,645	3,654	3,702	21	21	23	39	39	30	28	36
Persons with COD Tx needs	25,503	25,395	25,024	23,210	22,717	22,308	22,247	20,783	137	138	170	182	212	222	161	154

NOTES: Denominator for percentages is number of persons with indications of SUD Tx need or COD Tx need in the current or past SFY. Numerator is number of persons receiving appropriate behavioral health services in the current SFY. Note that the service rate numerator reflects a 1-year window, whereas Tx need denominator reflects a 2-year window. These groups are shown only for ages 13 and older, as SUD Tx need is rare before adolescence. *To protect the privacy of individuals, cells in this data product that represent 10 or fewer persons are not displayed. **Some additional cells with n>10 have been suppressed to ensure that cells with small numbers cannot be recalculated.



Behavioral Health Treatment Needs and Outcomes among Apple Health-Enrolled Children, Youth, and Young Adults in Washington State

[Back to Contents](#)

March 2026

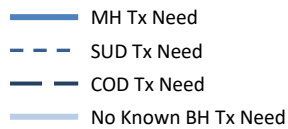
MEASURE 3

Behavioral Health Crisis Services¹

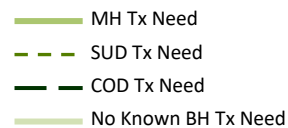
INDICATOR

Proportion of young people who received at least one behavioral health crisis service in the SFY.

ALL APPLE HEALTH:

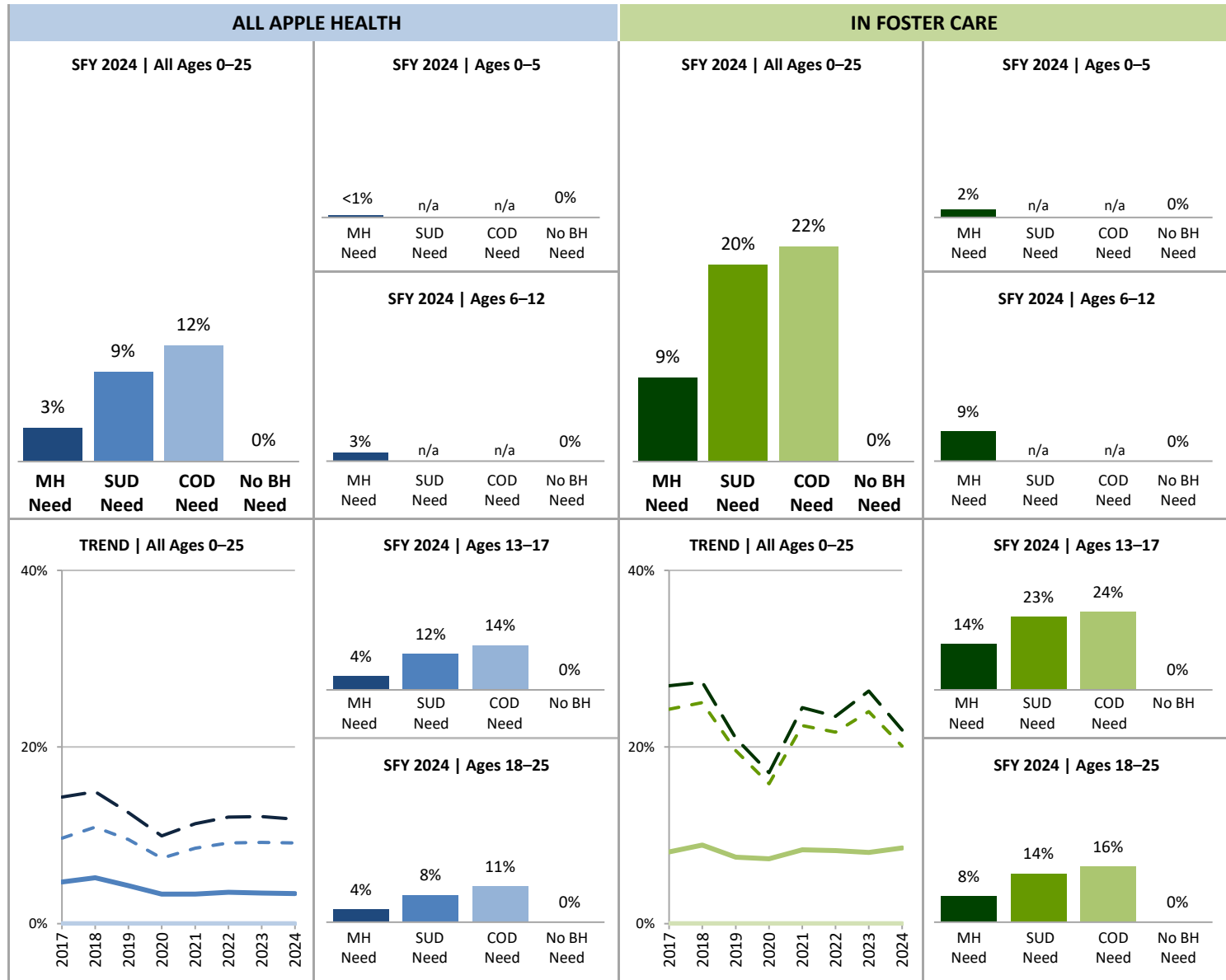


IN FOSTER CARE:



SOURCE & POPULATION

DSHS Integrated Client Databases. All Apple Health enrollees ages 0–25 in the SFY, and the subset of those in foster care in the SFY.



SUPPORTING TABLES | 3 Behavioral Health Crisis Services¹

STATE FISCAL YEAR	ALL APPLE HEALTH								IN FOSTER CARE							
	2017	2018	2019	2020	2021	2022	2023	2024	2017	2018	2019	2020	2021	2022	2023	2024
TOTAL PERSONS AGES 0–25																
Total persons, percent	1%	1%	1%	1%	1%	1%	1%	1%	4%	5%	4%	4%	4%	4%	4%	4%
Number of persons with BH crisis	12,059	13,823	11,719	8,926	9,145	10,325	10,560	10,176	657	737	625	565	569	514	455	453
Total number of persons	1,182,616	1,183,530	1,161,299	1,143,470	1,153,592	1,212,188	1,259,302	1,255,108	16,202	16,239	16,064	14,911	13,357	12,437	11,311	10,155
MH Tx need, percent	5%	5%	4%	3%	3%	4%	3%	3%	8%	9%	8%	7%	8%	8%	8%	9%
Number of persons with BH crisis	12,059	13,823	11,719	8,926	9,145	10,325	10,560	10,176	657	737	625	565	569	514	455	453
Total number of persons	255,474	265,876	271,536	266,325	272,997	289,393	303,349	298,535	8,084	8,281	8,311	7,692	6,808	6,213	5,635	5,279
SUD Tx need, percent	10%	11%	10%	7%	9%	9%	9%	9%	24%	25%	20%	16%	22%	22%	24%	20%
Number of persons with BH crisis	5,020	5,223	4,360	3,167	3,396	3,523	3,671	3,462	218	213	172	128	166	135	141	114
Total number of persons	51,891	47,783	45,704	42,704	39,758	38,498	39,871	37,909	898	851	878	808	740	623	587	567
COD Tx need, percent	14%	15%	13%	10%	11%	12%	12%	12%	27%	27%	21%	17%	24%	23%	26%	22%
Number of persons with BH crisis	5,020	5,223	4,360	3,167	3,396	3,523	3,671	3,462	218	213	172	128	166	135	141	114
Total number of persons	35,002	34,959	34,714	31,873	30,004	29,220	30,255	29,242	809	779	819	749	679	575	535	520
No known BH Tx need, percent	0%	0%	0%	0%	0%	0%	0%	0%	0%	0%	0%	0%	0%	0%	0%	0%
Number of persons with BH crisis	0	0	0	0	0	0	0	0	0	0	0	0	0	0	0	0
Total number of persons	910,253	904,830	878,773	866,314	870,841	913,517	946,337	947,906	8,029	7,886	7,694	7,160	6,488	6,176	5,624	4,829
PERSONS AGES 0–5																
Total persons, percent	<1%	<1%	<1%	<1%	<1%	<1%	<1%	<1%	<1%	<1%	<1%	<1%	<1%	<1%	<1%	1%
Number of persons with BH crisis	109	125	116	119	109	116	153	163	28	31	20	33	24	21	20	28
Total number of persons	351,791	349,820	342,544	332,832	326,205	328,152	328,297	329,012	8,102	8,036	7,809	7,129	6,369	5,855	5,369	4,687
MH Tx need, percent	<1%	1%	<1%	1%	<1%	1%	1%	1%	1%	2%	1%	2%	2%	1%	2%	2%
Number of persons with BH crisis	109	125	116	119	109	116	153	163	28	31	20	33	24	21	20	28
Total number of persons	24,158	24,667	25,032	23,377	22,456	23,018	23,477	23,920	2,017	2,059	2,044	1,791	1,600	1,444	1,328	1,251
No known BH Tx need, percent	0%	0%	0%	0%	0%	0%	0%	0%	0%	0%	0%	0%	0%	0%	0%	0%
Number of persons with BH crisis	0	0	0	0	0	0	0	0	0	0	0	0	0	0	0	0
Total number of persons	327,633	325,153	317,512	309,455	303,749	305,134	304,820	305,092	6,085	5,977	5,765	5,338	4,769	4,411	4,041	3,436
PERSONS AGES 6–12																
Total persons, percent	1%	1%	1%	1%	<1%	1%	1%	1%	4%	5%	5%	5%	5%	5%	5%	6%
Number of persons with BH crisis	1,880	2,411	2,200	1,792	1,697	1,969	2,068	2,175	202	250	234	220	203	182	153	177
Total number of persons	349,488	354,341	352,168	348,943	347,210	356,200	364,219	367,697	4,785	4,815	4,776	4,402	3,729	3,363	3,119	2,828
MH Tx need, percent	3%	3%	3%	2%	2%	3%	3%	3%	6%	7%	7%	7%	7%	8%	7%	9%
Number of persons with BH crisis	1,880	2,411	2,200	1,792	1,697	1,969	2,068	2,175	202	250	234	220	203	182	153	177
Total number of persons	73,629	77,048	79,068	77,239	75,148	76,105	79,696	81,958	3,463	3,560	3,523	3,301	2,729	2,378	2,218	2,036
No known BH Tx need, percent	0%	0%	0%	0%	0%	0%	0%	0%	0%	0%	0%	0%	0%	0%	0%	0%
Number of persons with BH crisis	0	0	0	0	0	0	0	0	0	0	0	0	0	0	0	0
Total number of persons	275,859	277,293	273,100	271,704	272,062	280,095	284,523	285,739	1,322	1,255	1,253	1,101	1,000	985	901	792

STATE FISCAL YEAR	ALL APPLE HEALTH								IN FOSTER CARE							
	2017	2018	2019	2020	2021	2022	2023	2024	2017	2018	2019	2020	2021	2022	2023	2024
PERSONS AGES 13–17																
Total persons, percent	2%	2%	2%	1%	1%	2%	2%	1%	14%	15%	12%	11%	12%	12%	12%	11%
Number of persons with BH crisis	4,589	5,200	4,269	3,287	3,247	3,911	3,873	3,693	383	402	326	274	274	245	228	208
Total number of persons	215,656	219,227	219,237	220,875	227,994	243,372	255,243	259,597	2,712	2,732	2,758	2,561	2,325	2,099	1,938	1,828
MH Tx need, percent	7%	7%	6%	4%	4%	5%	4%	4%	18%	18%	15%	13%	15%	15%	15%	14%
Number of persons with BH crisis	4,589	5,200	4,269	3,287	3,247	3,911	3,873	3,693	383	402	326	274	274	245	228	208
Total number of persons	67,806	71,429	74,294	73,334	75,506	81,063	86,141	85,443	2,177	2,200	2,242	2,032	1,828	1,638	1,531	1,461
SUD Tx need, percent	12%	14%	11%	9%	11%	13%	13%	12%	26%	27%	21%	19%	25%	25%	28%	23%
Number of persons with BH crisis	1,610	1,698	1,346	1,038	1,015	1,112	1,247	1,219	192	185	142	112	127	92	110	89
Total number of persons	13,326	12,312	11,944	10,991	9,086	8,545	9,946	10,552	736	685	682	603	505	371	398	391
COD Tx need, percent	17%	18%	14%	12%	14%	16%	16%	14%	29%	29%	22%	20%	27%	26%	29%	24%
Number of persons with BH crisis	1,610	1,698	1,346	1,038	1,015	1,112	1,247	1,219	192	185	142	112	127	92	110	89
Total number of persons	9,499	9,564	9,690	8,663	7,287	6,912	8,008	8,459	672	641	649	567	467	353	374	366
No known BH Tx need, percent	0%	0%	0%	0%	0%	0%	0%	0%	0%	0%	0%	0%	0%	0%	0%	0%
Number of persons with BH crisis	0	0	0	0	0	0	0	0	0	0	0	0	0	0	0	0
Total number of persons	144,023	145,050	142,689	145,213	150,689	160,676	167,164	172,061	471	488	483	493	459	443	383	342
PERSONS AGES 18–25																
Total persons, percent	2%	2%	2%	2%	2%	2%	1%	1%	7%	8%	6%	5%	7%	6%	6%	5%
Number of persons with BH crisis	5,481	6,087	5,134	3,728	4,092	4,329	4,466	4,145	44	54	45	38	68	66	54	40
Total number of persons	265,681	260,142	247,350	240,820	252,183	284,464	311,543	298,802	603	656	721	819	934	1,120	885	812
MH Tx need, percent	6%	7%	6%	4%	4%	4%	4%	4%	10%	12%	9%	7%	10%	9%	10%	8%
Number of persons with BH crisis	5,481	6,087	5,134	3,728	4,092	4,329	4,466	4,145	44	54	45	38	68	66	54	40
Total number of persons	89,881	92,732	93,142	92,375	99,887	109,207	114,035	107,214	427	462	502	568	651	753	558	531
SUD Tx need, percent	9%	10%	9%	7%	8%	8%	8%	8%	16%	17%	15%	8%	17%	17%	16%	14%
Number of persons with BH crisis	3,410	3,525	3,014	2,129	2,381	2,411	2,424	2,243	26	28	30	16	39	43	31	25
Total number of persons	38,565	35,471	33,760	31,713	30,672	29,953	29,925	27,357	162	166	196	205	235	252	189	176
COD Tx need, percent	13%	14%	12%	9%	10%	11%	11%	11%	19%	20%	18%	9%	18%	19%	19%	16%
Number of persons with BH crisis	3,410	3,525	3,014	2,129	2,381	2,411	2,424	2,243	26	28	30	16	39	43	31	25
Total number of persons	25,503	25,395	25,024	23,210	22,717	22,308	22,247	20,783	137	138	170	182	212	222	161	154
No known BH Tx need, percent	0%	0%	0%	0%	0%	0%	0%	0%	0%	0%	0%	0%	0%	0%	0%	0%
Number of persons with BH crisis	0	0	0	0	0	0	0	0	0	0	0	0	0	0	0	0
Total number of persons	162,738	157,334	145,472	139,942	144,341	167,612	189,830	185,014	151	166	193	228	260	337	299	259

NOTES: ¹Crisis service data from 2019 through 2021 are incomplete due to system changes associated with the move to Integrated Managed Care. Behavioral health crisis services are primarily mental health crisis services, but also include a small number of SUD crisis services as well.



Behavioral Health Treatment Needs and Outcomes among Apple Health-Enrolled Children, Youth, and Young Adults in Washington State

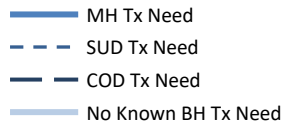
MEASURE 4

Mental Health Inpatient Services

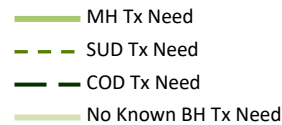
INDICATOR

Proportion of young people with any inpatient mental health services in the SFY.

ALL APPLE HEALTH:

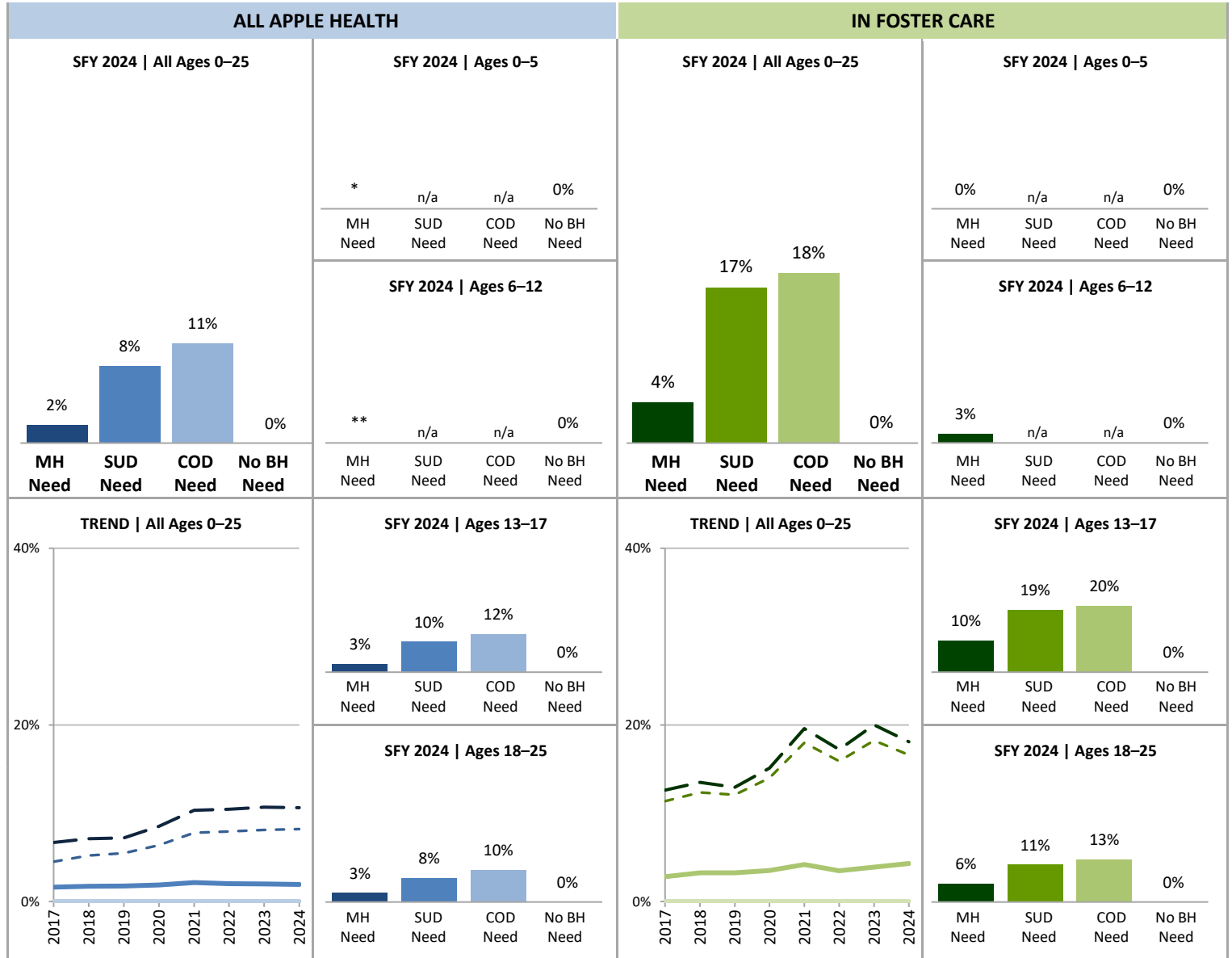


IN FOSTER CARE:



SOURCE & POPULATION

DSHS Integrated Client Databases. All Apple Health enrollees ages 0–25 in the SFY, and the subset of those in foster care in the SFY.



SUPPORTING TABLES | 4 Mental Health Inpatient Services

STATE FISCAL YEAR	ALL APPLE HEALTH								IN FOSTER CARE							
	2017	2018	2019	2020	2021	2022	2023	2024	2017	2018	2019	2020	2021	2022	2023	2024
TOTAL PERSONS AGES 0–25																
Total persons, percent	<1%	<1%	<1%	<1%	1%	<1%	<1%	<1%	1%	2%	2%	2%	2%	2%	2%	2%
Number of persons with MH IP	4,151	4,613	4,792	5,002	5,849	5,835	6,011	5,773	227	268	270	270	285	216	219	227
Total number of persons	1,182,616	1,183,530	1,161,299	1,143,470	1,153,592	1,212,188	1,259,302	1,255,108	16,202	16,239	16,064	14,911	13,357	12,437	11,311	10,155
MH Tx need, percent	2%	2%	2%	2%	2%	2%	2%	2%	3%	3%	3%	4%	4%	3%	4%	4%
Number of persons with MH IP	4,151	4,613	4,792	5,002	5,849	5,835	6,011	5,773	227	268	270	270	285	216	219	227
Total number of persons	255,474	265,876	271,536	266,325	272,997	289,393	303,349	298,535	8,084	8,281	8,311	7,692	6,808	6,213	5,635	5,279
SUD Tx need, percent	5%	5%	5%	6%	8%	8%	8%	8%	11%	12%	12%	14%	18%	16%	18%	17%
Number of persons with MH IP	2,339	2,490	2,499	2,718	3,097	3,050	3,231	3,108	102	105	106	113	133	99	107	94
Total number of persons	51,891	47,783	45,704	42,704	39,758	38,498	39,871	37,909	898	851	878	808	740	623	587	567
COD Tx need, percent	7%	7%	7%	9%	10%	10%	11%	11%	13%	13%	13%	15%	20%	17%	20%	18%
Number of persons with MH IP	2,339	2,490	2,499	2,718	3,097	3,050	3,231	3,108	102	105	106	113	133	99	107	94
Total number of persons	35,002	34,959	34,714	31,873	30,004	29,220	30,255	29,242	809	779	819	749	679	575	535	520
No known BH Tx need, percent	0%	0%	0%	0%	0%	0%	0%	0%	0%	0%	0%	0%	0%	0%	0%	0%
Number of persons with MH IP	0	0	0	0	0	0	0	0	0	0	0	0	0	0	0	0
Total number of persons	910,253	904,830	878,773	866,314	870,841	913,517	946,337	947,906	8,029	7,886	7,694	7,160	6,488	6,176	5,624	4,829
PERSONS AGES 0–5																
Total persons, percent	<1%	<1%	<1%	<1%	<1%	*	*	*	*	*	*	*	*	*	*	0%
Number of persons with MH IP	12	13	19	17	40	*	*	*	*	*	*	*	*	*	*	0
Total number of persons	351,791	349,820	342,544	332,832	326,205	328,152	328,297	329,012	8,102	8,036	7,809	7,129	6,369	5,855	5,369	4,687
MH Tx need, percent	<1%	<1%	<1%	<1%	<1%	*	*	*	*	*	*	*	*	*	*	0%
Number of persons with MH IP	12	13	19	17	40	*	*	*	*	*	*	*	*	*	*	0
Total number of persons	24,158	24,667	25,032	23,377	22,456	23,018	23,477	23,920	2,017	2,059	2,044	1,791	1,600	1,444	1,328	1,251
No known BH Tx need, percent	0%	0%	0%	0%	0%	0%	0%	0%	0%	0%	0%	0%	0%	0%	0%	0%
Number of persons with MH IP	0	0	0	0	0	0	0	0	0	0	0	0	0	0	0	0
Total number of persons	327,633	325,153	317,512	309,455	303,749	305,134	304,820	305,092	6,085	5,977	5,765	5,338	4,769	4,411	4,041	3,436
PERSONS AGES 6–12																
Total persons, percent	<1%	<1%	<1%	<1%	<1%	**	**	**	1%	1%	2%	1%	2%	1%	1%	2%
Number of persons with MH IP	339	430	457	401	455	**	**	**	59	69	76	65	61	36	44	56
Total number of persons	349,488	354,341	352,168	348,943	347,210	356,200	364,219	367,697	4,785	4,815	4,776	4,402	3,729	3,363	3,119	2,828
MH Tx need, percent	<1%	1%	1%	1%	1%	**	**	**	2%	2%	2%	2%	2%	2%	2%	3%
Number of persons with MH IP	339	430	457	401	455	**	**	**	59	69	76	65	61	36	44	56
Total number of persons	73,629	77,048	79,068	77,239	75,148	76,105	79,696	81,958	3,463	3,560	3,523	3,301	2,729	2,378	2,218	2,036
No known BH Tx need, percent	0%	0%	0%	0%	0%	0%	0%	0%	0%	0%	0%	0%	0%	0%	0%	0%
Number of persons with MH IP	0	0	0	0	0	0	0	0	0	0	0	0	0	0	0	0
Total number of persons	275,859	277,293	273,100	271,704	272,062	280,095	284,523	285,739	1,322	1,255	1,253	1,101	1,000	985	901	792

STATE FISCAL YEAR	ALL APPLE HEALTH								IN FOSTER CARE							
	2017	2018	2019	2020	2021	2022	2023	2024	2017	2018	2019	2020	2021	2022	2023	2024
PERSONS AGES 13–17																
Total persons, percent	1%	1%	1%	1%	1%	1%	1%	1%	6%	6%	6%	7%	8%	7%	7%	8%
Number of persons with MH IP	1,426	1,685	1,733	1,785	2,114	2,355	2,396	2,211	150	171	160	184	179	143	142	141
Total number of persons	215,656	219,227	219,237	220,875	227,994	243,372	255,243	259,597	2,712	2,732	2,758	2,561	2,325	2,099	1,938	1,828
MH Tx need, percent	2%	2%	2%	2%	3%	3%	3%	3%	7%	8%	7%	9%	10%	9%	9%	10%
Number of persons with MH IP	1,426	1,685	1,733	1,785	2,114	2,355	2,396	2,211	150	171	160	184	179	143	142	141
Total number of persons	67,806	71,429	74,294	73,334	75,506	81,063	86,141	85,443	2,177	2,200	2,242	2,032	1,828	1,638	1,531	1,461
SUD Tx need, percent	5%	6%	7%	7%	10%	13%	12%	10%	**	14%	13%	17%	20%	19%	21%	19%
Number of persons with MH IP	705	786	783	815	917	1,086	1,171	1,015	**	94	86	102	103	71	82	74
Total number of persons	13,326	12,312	11,944	10,991	9,086	8,545	9,946	10,552	736	685	682	603	505	371	398	391
COD Tx need, percent	7%	8%	8%	9%	13%	16%	15%	12%	**	15%	13%	18%	22%	20%	22%	20%
Number of persons with MH IP	705	786	783	815	917	1,086	1,171	1,015	**	94	86	102	103	71	82	74
Total number of persons	9,499	9,564	9,690	8,663	7,287	6,912	8,008	8,459	672	641	649	567	467	353	374	366
No known BH Tx need, percent	0%	0%	0%	0%	0%	0%	0%	0%	0%	0%	0%	0%	0%	0%	0%	0%
Number of persons with MH IP	0	0	0	0	0	0	0	0	0	0	0	0	0	0	0	0
Total number of persons	144,023	145,050	142,689	145,213	150,689	160,676	167,164	172,061	471	488	483	493	459	443	383	342
PERSONS AGES 18–25																
Total persons, percent	1%	1%	1%	1%	1%	1%	1%	1%	**	**	**	**	**	**	**	4%
Number of persons with MH IP	2,374	2,485	2,583	2,799	3,240	3,035	3,131	3,065	**	**	**	**	**	**	**	30
Total number of persons	265,681	260,142	247,350	240,820	252,183	284,464	311,543	298,802	603	656	721	819	934	1,120	885	812
MH Tx need, percent	3%	3%	3%	3%	3%	3%	3%	3%	**	**	**	**	**	**	**	6%
Number of persons with MH IP	2,374	2,485	2,583	2,799	3,240	3,035	3,131	3,065	**	**	**	**	**	**	**	30
Total number of persons	89,881	92,732	93,142	92,375	99,887	109,207	114,035	107,214	427	462	502	568	651	753	558	531
SUD Tx need, percent	4%	5%	5%	6%	7%	7%	7%	8%	*	7%	10%	5%	13%	11%	13%	11%
Number of persons with MH IP	1,634	1,704	1,716	1,903	2,180	1,964	2,060	2,093	*	11	20	11	30	28	25	20
Total number of persons	38,565	35,471	33,760	31,713	30,672	29,953	29,925	27,357	162	166	196	205	235	252	189	176
COD Tx need, percent	6%	7%	7%	8%	10%	9%	9%	10%	*	8%	12%	6%	14%	13%	16%	13%
Number of persons with MH IP	1,634	1,704	1,716	1,903	2,180	1,964	2,060	2,093	*	11	20	11	30	28	25	20
Total number of persons	25,503	25,395	25,024	23,210	22,717	22,308	22,247	20,783	137	138	170	182	212	222	161	154
No known BH Tx need, percent	0%	0%	0%	0%	0%	0%	0%	0%	0%	0%	0%	0%	0%	0%	0%	0%
Number of persons with MH IP	0	0	0	0	0	0	0	0	0	0	0	0	0	0	0	0
Total number of persons	162,738	157,334	145,472	139,942	144,341	167,612	189,830	185,014	151	166	193	228	260	337	299	259

NOTES: Mental health inpatient services (MH IP) include community psychiatric settings; Children's Long-term Inpatient Program (CLIP), including Child Study and Treatment Center (CSTC); state hospitals; and residential treatment facilities. *To protect the privacy of individuals, cells in this data product that represent 10 or fewer persons are not displayed. **Some additional cells with n>10 have been suppressed to ensure that cells with small numbers cannot be recalculated.



Behavioral Health Treatment Needs and Outcomes among Apple Health-Enrolled Children, Youth, and Young Adults in Washington State

[Back to Contents](#)

March 2026

MEASURE 5

**Psychotropic
Polypharmacy**

*Not currently available due to data limitations.
Measure will be added when it becomes available.*



Behavioral Health Treatment Needs and Outcomes among Apple Health-Enrolled Children, Youth, and Young Adults in Washington State

MEASURE 6

Criminal Legal Involvement

INDICATOR

Proportion of young people ages 13–25 who had any criminal legal involvement in the SFY, including arrests and convictions.

ALL APPLE HEALTH:

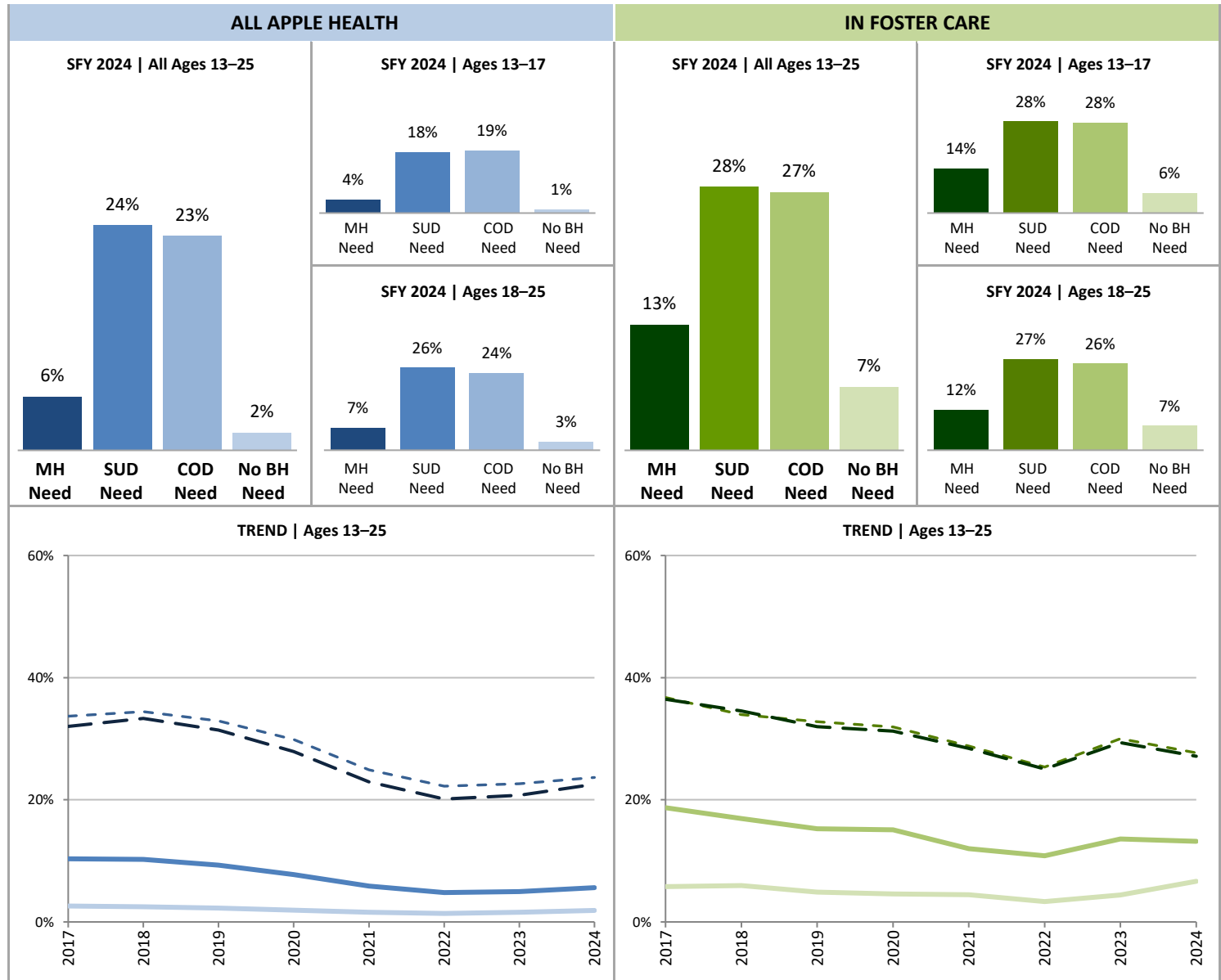
- █ MH Tx Need
- █ SUD Tx Need
- █ COD Tx Need
- █ No Known BH Tx Need

IN FOSTER CARE:

- █ MH Tx Need
- █ SUD Tx Need
- █ COD Tx Need
- █ No Known BH Tx Need

SOURCE & POPULATION

DSHS Integrated Client Databases. Youth and young adults ages 13–25 with Apple Health coverage and the subset of those in foster care in the SFY.



SUPPORTING TABLES | 6 Criminal Legal Involvement

STATE FISCAL YEAR	ALL APPLE HEALTH								IN FOSTER CARE							
	2017	2018	2019	2020	2021	2022	2023	2024	2017	2018	2019	2020	2021	2022	2023	2024
PERSONS AGES 13–25																
Total persons, percent	6%	6%	6%	5%	4%	3%	3%	4%	17%	15%	14%	13%	11%	9%	12%	12%
Number of persons with CLI	30,587	29,167	26,269	22,138	17,943	16,391	18,307	19,965	558	510	478	449	350	299	333	319
Total number of persons	481,337	479,369	466,587	461,695	480,177	527,836	566,786	558,399	3,315	3,388	3,479	3,380	3,259	3,219	2,823	2,640
MH Tx need, percent	10%	10%	9%	8%	6%	5%	5%	6%	19%	17%	15%	15%	12%	11%	14%	13%
Number of persons with CLI	16,300	16,814	15,555	12,828	10,278	9,149	9,953	10,835	487	451	419	392	298	259	284	263
Total number of persons	157,687	164,161	167,436	165,709	175,393	190,270	200,176	192,657	2,604	2,662	2,744	2,600	2,479	2,391	2,089	1,992
SUD Tx need, percent	34%	34%	33%	30%	25%	22%	23%	24%	37%	34%	33%	32%	29%	25%	30%	28%
Number of persons with CLI	17,492	16,453	15,039	12,751	9,904	8,559	9,023	8,969	330	289	288	258	213	158	176	157
Total number of persons	51,891	47,783	45,704	42,704	39,758	38,498	39,871	37,909	898	851	878	808	740	623	587	567
COD Tx need, percent	32%	33%	31%	28%	23%	20%	21%	23%	36%	35%	32%	31%	28%	25%	29%	27%
Number of persons with CLI	11,203	11,650	10,913	8,889	6,881	5,881	6,277	6,587	295	269	262	234	193	144	157	141
Total number of persons	35,002	34,959	34,714	31,873	30,004	29,220	30,255	29,242	809	779	819	749	679	575	535	520
No known BH Tx need, percent	3%	2%	2%	2%	2%	1%	2%	2%	6%	6%	5%	5%	4%	3%	4%	7%
Number of persons with CLI	7,998	7,550	6,588	5,448	4,642	4,564	5,608	6,748	36	39	33	33	32	26	30	40
Total number of persons	306,761	302,384	288,161	285,155	295,030	328,288	356,994	357,075	622	654	676	721	719	780	682	601
PERSONS AGES 13–17																
Total persons, percent	3%	3%	2%	2%	1%	1%	2%	2%	18%	15%	14%	13%	10%	9%	12%	12%
Number of persons with CLI	6,829	6,118	5,175	4,383	3,237	3,020	4,324	5,644	483	421	378	339	238	185	224	228
Total number of persons	215,656	219,227	219,237	220,875	227,994	243,372	255,243	259,597	2,712	2,732	2,758	2,561	2,325	2,099	1,938	1,828
MH Tx need, percent	6%	6%	5%	4%	3%	2%	3%	4%	20%	17%	15%	15%	12%	11%	13%	14%
Number of persons with CLI	4,315	4,058	3,544	2,909	2,108	1,902	2,642	3,430	431	378	344	314	211	173	206	199
Total number of persons	67,806	71,429	74,294	73,334	75,506	81,063	86,141	85,443	2,177	2,200	2,242	2,032	1,828	1,638	1,531	1,461
SUD Tx need, percent	25%	24%	21%	19%	15%	13%	15%	18%	40%	35%	34%	33%	27%	23%	28%	28%
Number of persons with CLI	3,362	2,934	2,476	2,077	1,405	1,069	1,460	1,936	293	243	231	198	137	84	112	109
Total number of persons	13,326	12,312	11,944	10,991	9,086	8,545	9,946	10,552	736	685	682	603	505	371	398	391
COD Tx need, percent	26%	24%	21%	19%	16%	13%	15%	19%	40%	35%	33%	33%	28%	**	28%	28%
Number of persons with CLI	2,500	2,336	2,053	1,671	1,148	874	1,195	1,597	266	227	215	188	129	**	106	101
Total number of persons	9,499	9,564	9,690	8,663	7,287	6,912	8,008	8,459	672	641	649	567	467	353	374	366
No known BH Tx need, percent	1%	1%	1%	1%	1%	1%	1%	1%	5%	6%	4%	3%	4%	*	3%	6%
Number of persons with CLI	1,652	1,462	1,208	1,068	872	923	1,417	1,875	25	27	18	15	19	*	12	21
Total number of persons	144,023	145,050	142,689	145,213	150,689	160,676	167,164	172,061	471	488	483	493	459	443	383	342

STATE FISCAL YEAR	ALL APPLE HEALTH								IN FOSTER CARE							
	2017	2018	2019	2020	2021	2022	2023	2024	2017	2018	2019	2020	2021	2022	2023	2024
PERSONS AGES 18–25																
Total persons, percent	9%	9%	9%	7%	6%	5%	4%	5%	12%	14%	14%	13%	12%	10%	12%	11%
Number of persons with CLI	23,758	23,049	21,094	17,755	14,706	13,371	13,983	14,321	75	89	100	110	112	114	109	91
Total number of persons	265,681	260,142	247,350	240,820	252,183	284,464	311,543	298,802	603	656	721	819	934	1,120	885	812
MH Tx need, percent	13%	14%	13%	11%	8%	7%	6%	7%	13%	16%	15%	14%	13%	11%	14%	12%
Number of persons with CLI	11,985	12,756	12,011	9,919	8,170	7,247	7,311	7,405	56	73	75	78	87	86	78	64
Total number of persons	89,881	92,732	93,142	92,375	99,887	109,207	114,035	107,214	427	462	502	568	651	753	558	531
SUD Tx need, percent	37%	38%	37%	34%	28%	25%	25%	26%	23%	28%	29%	29%	32%	29%	34%	27%
Number of persons with CLI	14,130	13,519	12,563	10,674	8,499	7,490	7,563	7,033	37	46	57	60	76	74	64	48
Total number of persons	38,565	35,471	33,760	31,713	30,672	29,953	29,925	27,357	162	166	196	205	235	252	189	176
COD Tx need, percent	34%	37%	35%	31%	25%	22%	23%	24%	21%	30%	28%	25%	30%	**	32%	26%
Number of persons with CLI	8,703	9,314	8,860	7,218	5,733	5,007	5,082	4,990	29	42	47	46	64	**	51	40
Total number of persons	25,503	25,395	25,024	23,210	22,717	22,308	22,247	20,783	137	138	170	182	212	222	161	154
No known BH Tx need, percent	4%	4%	4%	3%	3%	2%	2%	3%	7%	7%	8%	8%	5%	**	6%	7%
Number of persons with CLI	6,346	6,088	5,380	4,380	3,770	3,641	4,191	4,873	11	12	15	18	13	**	18	19
Total number of persons	162,738	157,334	145,472	139,942	144,341	167,612	189,830	185,014	151	166	193	228	260	337	299	259

NOTES: Criminal legal involvement (CLI) was derived from Washington State Patrol arrest records and convictions recorded in the Washington State Institute for Public Policy Criminal History Database. *To protect the privacy of individuals, cells in this data product that represent 10 or fewer persons are not displayed. **Some additional cells with n>10 have been suppressed to ensure that cells with small numbers cannot be recalculated.



Behavioral Health Treatment Needs and Outcomes among Apple Health-Enrolled Children, Youth, and Young Adults in Washington State

MEASURE 7

Emergency Department Utilization

INDICATOR

Number of emergency department visits in the SFY per 1,000 Apple Health member months.

ALL APPLE HEALTH:

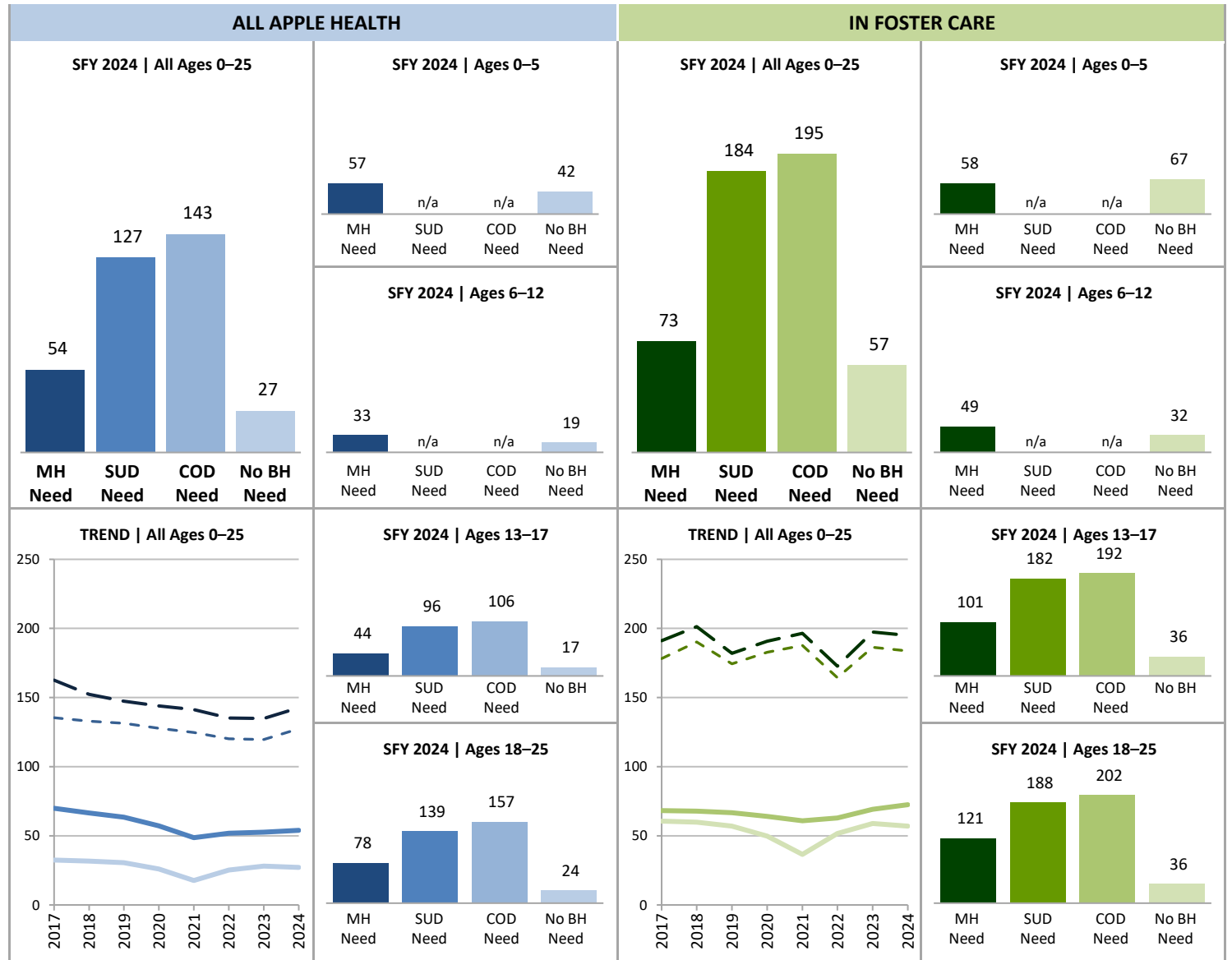
- MH Tx Need
- - - SUD Tx Need
- - - COD Tx Need
- No Known BH Tx Need

IN FOSTER CARE:

- MH Tx Need
- - - SUD Tx Need
- - - COD Tx Need
- No Known BH Tx Need

SOURCE & POPULATION

DSHS Integrated Client Databases. All Apple Health enrollees ages 0–25 in the SFY, and the subset of those in foster care in the SFY.



SUPPORTING TABLES | 7 Emergency Department Utilization

STATE FISCAL YEAR	ALL APPLE HEALTH								IN FOSTER CARE							
	2017	2018	2019	2020	2021	2022	2023	2024	2017	2018	2019	2020	2021	2022	2023	2024
TOTAL PERSONS AGES 0–25																
Total persons, rate	41	40	39	34	25	32	34	34	64	64	62	57	49	57	64	65
Number of persons	1,182,616	1,183,530	1,161,299	1,143,470	1,153,592	1,212,188	1,259,302	1,255,108	16,202	16,239	16,064	14,911	13,357	12,437	11,311	10,155
MH Tx need, rate	70	67	63	57	49	52	53	54	68	68	67	64	61	63	69	73
Number of persons	255,474	265,876	271,536	266,325	272,997	289,393	303,349	298,535	8,084	8,281	8,311	7,692	6,808	6,213	5,635	5,279
SUD Tx need, rate	135	133	131	128	125	120	120	127	178	190	174	183	188	164	186	184
Number of persons	51,891	47,783	45,704	42,704	39,758	38,498	39,871	37,909	898	851	878	808	740	623	587	567
COD Tx need, rate	163	152	147	144	141	135	135	143	191	201	182	191	196	173	197	195
Number of persons	35,002	34,959	34,714	31,873	30,004	29,220	30,255	29,242	809	779	819	749	679	575	535	520
No known BH Tx need, rate	32	32	31	26	18	25	28	27	61	60	57	50	37	52	59	57
Number of persons	910,253	904,830	878,773	866,314	870,841	913,517	946,337	947,906	8,029	7,886	7,694	7,160	6,488	6,176	5,624	4,829
PERSONS AGES 0–5																
Total persons, rate	48	48	46	39	25	42	47	43	67	64	63	55	41	60	68	64
Number of persons	351,791	349,820	342,544	332,832	326,205	328,152	328,297	329,012	8,102	8,036	7,809	7,129	6,369	5,855	5,369	4,687
MH Tx need, rate	67	66	62	53	36	57	64	57	56	54	54	48	38	55	60	58
Number of persons	24,158	24,667	25,032	23,377	22,456	23,018	23,477	23,920	2,017	2,059	2,044	1,791	1,600	1,444	1,328	1,251
No known BH Tx need, rate	47	47	45	38	24	40	46	42	70	67	66	57	43	62	70	67
Number of persons	327,633	325,153	317,512	309,455	303,749	305,134	304,820	305,092	6,085	5,977	5,765	5,338	4,769	4,411	4,041	3,436
PERSONS AGES 6–12																
Total persons, rate	24	24	22	19	12	18	23	22	38	38	37	35	29	30	39	44
Number of persons	349,488	354,341	352,168	348,943	347,210	356,200	364,219	367,697	4,785	4,815	4,776	4,402	3,729	3,363	3,119	2,828
MH Tx need, rate	36	35	34	29	21	28	34	33	42	38	41	38	33	35	42	49
Number of persons	73,629	77,048	79,068	77,239	75,148	76,105	79,696	81,958	3,463	3,560	3,523	3,301	2,729	2,378	2,218	2,036
No known BH Tx need, rate	21	20	19	16	10	15	20	19	29	36	26	26	17	21	32	32
Number of persons	275,859	277,293	273,100	271,704	272,062	280,095	284,523	285,739	1,322	1,255	1,253	1,101	1,000	985	901	792
PERSONS AGES 13–17																
Total persons, rate	32	31	29	26	20	24	25	26	92	97	89	85	81	73	85	88
Number of persons	215,656	219,227	219,237	220,875	227,994	243,372	255,243	259,597	2,712	2,732	2,758	2,561	2,325	2,099	1,938	1,828
MH Tx need, rate	56	54	51	45	38	42	43	44	107	112	101	99	96	87	100	101
Number of persons	67,806	71,429	74,294	73,334	75,506	81,063	86,141	85,443	2,177	2,200	2,242	2,032	1,828	1,638	1,531	1,461
SUD Tx need, rate	93	94	91	90	89	95	96	96	168	185	166	182	175	156	192	182
Number of persons	13,326	12,312	11,944	10,991	9,086	8,545	9,946	10,552	736	685	682	603	505	371	398	391
COD Tx need, rate	110	106	100	100	99	106	106	106	180	193	171	190	181	162	199	192
Number of persons	9,499	9,564	9,690	8,663	7,287	6,912	8,008	8,459	672	641	649	567	467	353	374	366

STATE FISCAL YEAR	ALL APPLE HEALTH								IN FOSTER CARE							
	2017	2018	2019	2020	2021	2022	2023	2024	2017	2018	2019	2020	2021	2022	2023	2024
No known BH Tx need, rate	20	19	18	15	11	15	16	17	30	33	33	26	21	24	25	36
Number of persons	144,023	145,050	142,689	145,213	150,689	160,676	167,164	172,061	471	488	483	493	459	443	383	342
PERSONS AGES 18–25																
Total persons, rate	63	60	60	56	49	45	41	45	115	125	116	114	107	91	84	93
Number of persons	265,681	260,142	247,350	240,820	252,183	284,464	311,543	298,802	603	656	721	819	934	1,120	885	812
MH Tx need, rate	109	102	99	91	80	74	71	78	144	152	148	144	137	115	113	121
Number of persons	89,881	92,732	93,142	92,375	99,887	109,207	114,035	107,214	427	462	502	568	651	753	558	531
SUD Tx need, rate	150	147	146	141	135	127	128	139	223	213	203	184	216	177	175	188
Number of persons	38,565	35,471	33,760	31,713	30,672	29,953	29,925	27,357	162	166	196	205	235	252	189	176
COD Tx need, rate	182	170	166	160	155	144	145	157	246	242	224	192	230	190	195	202
Number of persons	25,503	25,395	25,024	23,210	22,717	22,308	22,247	20,783	137	138	170	182	212	222	161	154
No known BH Tx need, rate	35	33	34	31	26	24	22	24	36	60	39	39	31	38	33	36
Number of persons	162,738	157,334	145,472	139,942	144,341	167,612	189,830	185,014	151	166	193	228	260	337	299	259

NOTES: This indicator presents the number of emergency department visits in the SFY per 1,000 Apple Health member months (months of Apple Health enrollment in the population).



Behavioral Health Treatment Needs and Outcomes among Apple Health-Enrolled Children, Youth, and Young Adults in Washington State

MEASURE 8

Injuries

INDICATOR

Proportion of young people who received an injury diagnosis at least once in the SFY.

ALL APPLE HEALTH:

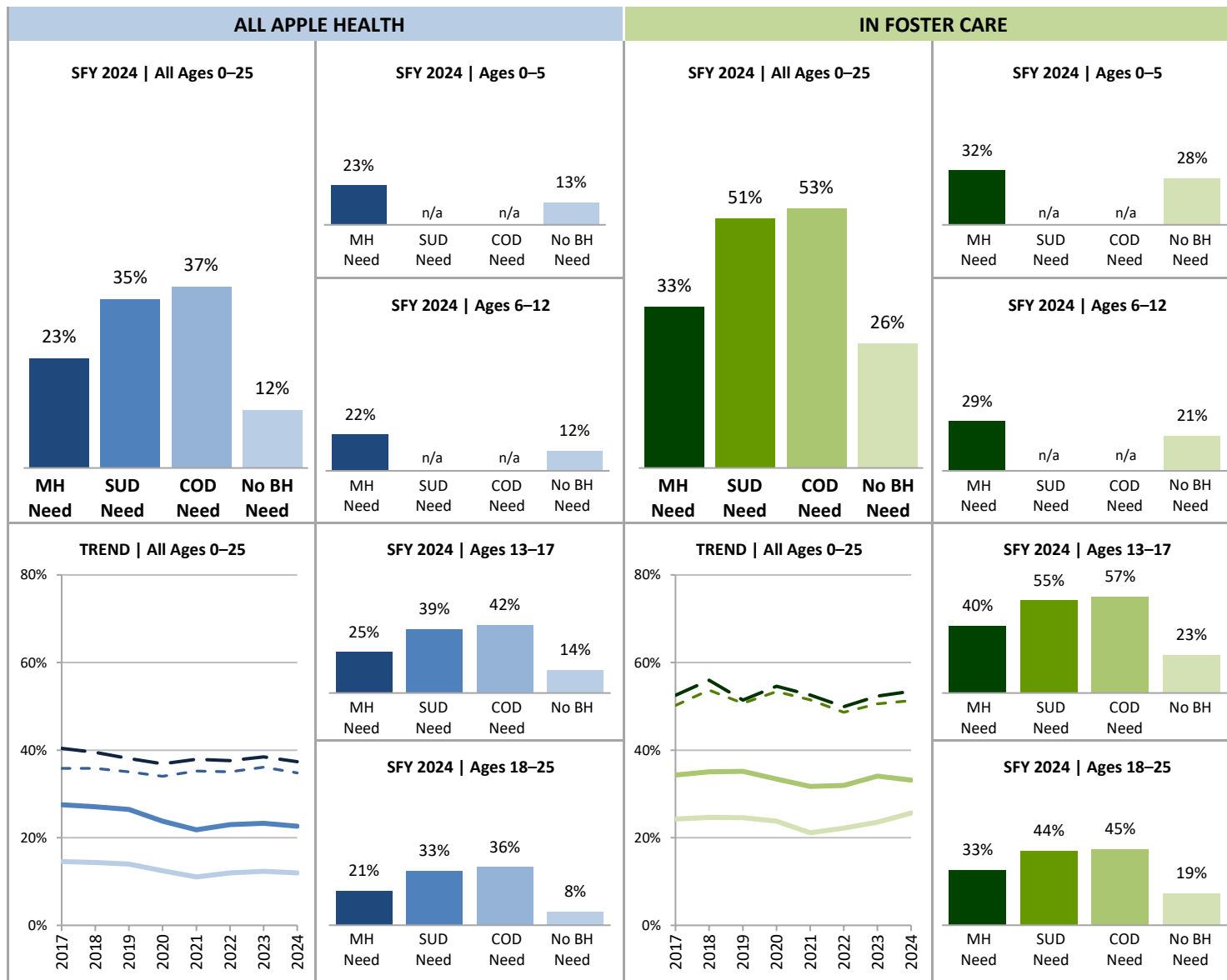
- MH Tx Need
- - - SUD Tx Need
- - - COD Tx Need
- No Known BH Tx Need

IN FOSTER CARE:

- MH Tx Need
- - - SUD Tx Need
- - - COD Tx Need
- No Known BH Tx Need

SOURCE & POPULATION

DSHS Integrated Client Databases. All Apple Health enrollees ages 0–25 in the SFY, and the subset of those in foster care in the SFY.



SUPPORTING TABLES | 8 Injuries

STATE FISCAL YEAR	ALL APPLE HEALTH								IN FOSTER CARE							
	2017	2018	2019	2020	2021	2022	2023	2024	2017	2018	2019	2020	2021	2022	2023	2024
TOTAL PERSONS AGES 0–25																
Total persons, percent	18%	17%	17%	15%	14%	15%	15%	15%	29%	30%	30%	29%	27%	27%	29%	30%
Number of persons with injury	207,407	205,183	197,478	173,876	158,426	178,500	190,267	183,417	4,748	4,865	4,838	4,294	3,554	3,370	3,262	3,001
Total number of persons	1,182,616	1,183,530	1,161,299	1,143,470	1,153,592	1,212,188	1,259,302	1,255,108	16,202	16,239	16,064	14,911	13,357	12,437	11,311	10,155
MH Tx need, percent	28%	27%	26%	24%	22%	23%	23%	23%	34%	35%	35%	33%	32%	32%	34%	33%
Number of persons with injury	70,344	71,971	71,825	63,366	59,552	66,522	70,602	67,565	2,773	2,902	2,922	2,568	2,159	1,983	1,920	1,750
Total number of persons	255,474	265,876	271,536	266,325	272,997	289,393	303,349	298,535	8,084	8,281	8,311	7,692	6,808	6,213	5,635	5,279
SUD Tx need, percent	36%	36%	35%	34%	35%	35%	36%	35%	50%	54%	51%	53%	51%	49%	51%	51%
Number of persons with injury	18,607	17,113	16,007	14,531	14,017	13,502	14,396	13,183	451	457	445	431	381	303	297	291
Total number of persons	51,891	47,783	45,704	42,704	39,758	38,498	39,871	37,909	898	851	878	808	740	623	587	567
COD Tx need, percent	40%	39%	38%	37%	38%	38%	38%	37%	53%	56%	51%	55%	53%	50%	52%	53%
Number of persons with injury	14,143	13,796	13,219	11,755	11,379	10,993	11,629	10,925	425	436	421	409	357	287	280	278
Total number of persons	35,002	34,959	34,714	31,873	30,004	29,220	30,255	29,242	809	779	819	749	679	575	535	520
No known BH Tx need, percent	15%	14%	14%	12%	11%	12%	12%	12%	24%	25%	25%	24%	21%	22%	24%	26%
Number of persons with injury	132,599	129,895	122,865	107,734	96,236	109,469	116,898	113,594	1,949	1,942	1,892	1,704	1,371	1,371	1,325	1,238
Total number of persons	910,253	904,830	878,773	866,314	870,841	913,517	946,337	947,906	8,029	7,886	7,694	7,160	6,488	6,176	5,624	4,829
PERSONS AGES 0–5																
Total persons, percent	16%	16%	15%	14%	13%	13%	13%	14%	27%	28%	29%	27%	25%	26%	27%	29%
Number of persons with injury	54,935	54,686	52,368	46,748	43,978	43,210	44,210	45,099	2,224	2,256	2,230	1,905	1,602	1,507	1,459	1,355
Total number of persons	351,791	349,820	342,544	332,832	326,205	328,152	328,297	329,012	8,102	8,036	7,809	7,129	6,369	5,855	5,369	4,687
MH Tx need, percent	26%	26%	25%	23%	23%	22%	23%	23%	33%	34%	35%	30%	32%	31%	32%	32%
Number of persons with injury	6,295	6,386	6,383	5,455	5,117	5,144	5,301	5,525	665	707	722	541	511	451	425	406
Total number of persons	24,158	24,667	25,032	23,377	22,456	23,018	23,477	23,920	2,017	2,059	2,044	1,791	1,600	1,444	1,328	1,251
No known BH Tx need, percent	15%	15%	14%	13%	13%	12%	13%	13%	26%	26%	26%	26%	23%	24%	26%	28%
Number of persons with injury	48,640	48,300	45,985	41,293	38,861	38,066	38,909	39,574	1,559	1,549	1,508	1,364	1,091	1,056	1,034	949
Total number of persons	327,633	325,153	317,512	309,455	303,749	305,134	304,820	305,092	6,085	5,977	5,765	5,338	4,769	4,411	4,041	3,436
PERSONS AGES 6–12																
Total persons, percent	17%	17%	16%	14%	12%	13%	14%	14%	27%	27%	28%	27%	24%	24%	28%	27%
Number of persons with injury	59,435	59,414	57,386	48,783	40,026	48,032	52,666	52,585	1,285	1,285	1,323	1,199	886	800	872	756
Total number of persons	349,488	354,341	352,168	348,943	347,210	356,200	364,219	367,697	4,785	4,815	4,776	4,402	3,729	3,363	3,119	2,828
MH Tx need, percent	25%	25%	25%	21%	19%	21%	22%	22%	30%	29%	31%	30%	27%	26%	31%	29%
Number of persons with injury	18,427	19,145	19,412	16,591	13,947	15,869	17,774	18,090	1,026	1,035	1,078	992	728	627	696	593
Total number of persons	73,629	77,048	79,068	77,239	75,148	76,105	79,696	81,958	3,463	3,560	3,523	3,301	2,729	2,378	2,218	2,036
No known BH Tx need, percent	15%	15%	14%	12%	10%	11%	12%	12%	20%	20%	20%	19%	16%	18%	20%	21%
Number of persons with injury	41,008	40,269	37,974	32,192	26,079	32,163	34,892	34,495	259	250	245	207	158	173	176	163
Total number of persons	275,859	277,293	273,100	271,704	272,062	280,095	284,523	285,739	1,322	1,255	1,253	1,101	1,000	985	901	792

STATE FISCAL YEAR	ALL APPLE HEALTH								IN FOSTER CARE							
	2017	2018	2019	2020	2021	2022	2023	2024	2017	2018	2019	2020	2021	2022	2023	2024
PERSONS AGES 13–17																
Total persons, percent	22%	21%	21%	18%	14%	18%	19%	18%	38%	40%	38%	37%	33%	36%	36%	36%
Number of persons with injury	47,087	46,836	45,678	40,071	32,779	43,079	47,310	46,165	1,040	1,090	1,056	939	776	762	703	660
Total number of persons	215,656	219,227	219,237	220,875	227,994	243,372	255,243	259,597	2,712	2,732	2,758	2,561	2,325	2,099	1,938	1,828
MH Tx need, percent	31%	30%	29%	26%	22%	25%	26%	25%	42%	44%	42%	41%	38%	41%	40%	40%
Number of persons with injury	21,114	21,636	21,705	19,027	16,457	20,514	22,205	21,428	914	974	933	835	695	667	617	578
Total number of persons	67,806	71,429	74,294	73,334	75,506	81,063	86,141	85,443	2,177	2,200	2,242	2,032	1,828	1,638	1,531	1,461
SUD Tx need, percent	40%	41%	39%	38%	38%	41%	41%	39%	51%	55%	52%	56%	53%	55%	53%	55%
Number of persons with injury	5,289	4,993	4,653	4,206	3,423	3,500	4,084	4,131	379	374	354	336	269	204	210	214
Total number of persons	13,326	12,312	11,944	10,991	9,086	8,545	9,946	10,552	736	685	682	603	505	371	398	391
COD Tx need, percent	44%	44%	41%	41%	41%	44%	44%	42%	54%	57%	53%	57%	55%	56%	54%	57%
Number of persons with injury	4,208	4,195	4,016	3,520	2,956	3,033	3,504	3,523	360	363	341	324	257	197	203	209
Total number of persons	9,499	9,564	9,690	8,663	7,287	6,912	8,008	8,459	672	641	649	567	467	353	374	366
No known BH Tx need, percent	17%	17%	16%	14%	11%	14%	15%	14%	23%	22%	23%	19%	15%	20%	21%	23%
Number of persons with injury	24,892	24,402	23,336	20,358	15,855	22,098	24,525	24,129	107	105	110	92	69	88	79	77
Total number of persons	144,023	145,050	142,689	145,213	150,689	160,676	167,164	172,061	471	488	483	493	459	443	383	342
PERSONS AGES 18–25																
Total persons, percent	17%	17%	17%	16%	17%	16%	15%	13%	33%	36%	32%	31%	31%	27%	26%	28%
Number of persons with injury	45,950	44,247	42,046	38,274	41,643	44,179	46,081	39,568	199	234	229	251	290	301	228	230
Total number of persons	265,681	260,142	247,350	240,820	252,183	284,464	311,543	298,802	603	656	721	819	934	1,120	885	812
MH Tx need, percent	27%	27%	26%	24%	24%	23%	22%	21%	39%	40%	38%	35%	35%	32%	33%	33%
Number of persons with injury	24,508	24,804	24,325	22,293	24,031	24,995	25,322	22,522	168	186	189	200	225	238	182	173
Total number of persons	89,881	92,732	93,142	92,375	99,887	109,207	114,035	107,214	427	462	502	568	651	753	558	531
SUD Tx need, percent	35%	34%	34%	33%	35%	33%	34%	33%	44%	50%	46%	46%	48%	39%	46%	44%
Number of persons with injury	13,318	12,120	11,354	10,325	10,594	10,002	10,312	9,052	72	83	91	95	112	99	87	77
Total number of persons	38,565	35,471	33,760	31,713	30,672	29,953	29,925	27,357	162	166	196	205	235	252	189	176
COD Tx need, percent	39%	38%	37%	35%	37%	36%	37%	36%	47%	53%	47%	47%	47%	41%	48%	45%
Number of persons with injury	9,935	9,601	9,203	8,235	8,423	7,960	8,125	7,402	65	73	80	85	100	90	77	69
Total number of persons	25,503	25,395	25,024	23,210	22,717	22,308	22,247	20,783	137	138	170	182	212	222	161	154
No known BH Tx need, percent	11%	11%	11%	10%	11%	10%	10%	8%	16%	23%	15%	18%	20%	16%	12%	19%
Number of persons with injury	18,059	16,924	15,570	13,891	15,441	17,142	18,572	15,396	24	38	29	41	53	54	36	49
Total number of persons	162,738	157,334	145,472	139,942	144,341	167,612	189,830	185,014	151	166	193	228	260	337	299	259

NOTES: This indicator presents the proportion of persons who experienced an injury in the year, as indicated by presence of any type of injury diagnosis recorded in DSHS Integrated Client Databases (ICDB) that is included in the Centers for Disease Control (CDC) "External Cause of Injury" and "Nature of Injury" definitions lists.



Behavioral Health Treatment Needs and Outcomes among Apple Health-Enrolled Children, Youth, and Young Adults in Washington State

MEASURE 9

Teen Pregnancy

INDICATOR

Number of pregnant girls per 1,000 girls ages 10–19 in the SFY.

ALL APPLE HEALTH:

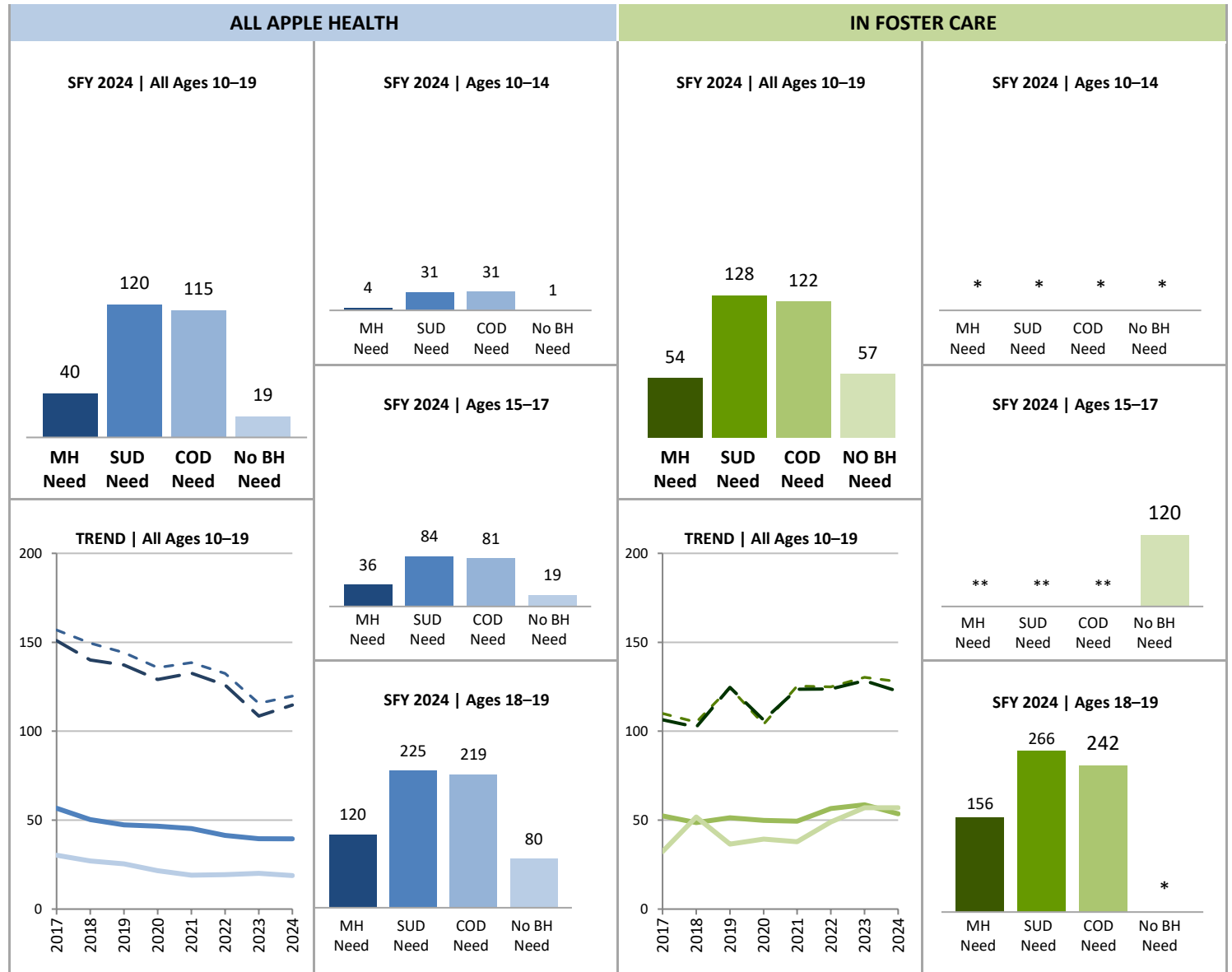
- MH Tx Need
- - - SUD Tx Need
- COD Tx Need
- No Known BH Tx Need

IN FOSTER CARE:

- MH Tx Need
- - - SUD Tx Need
- COD Tx Need
- No Known BH Tx Need

SOURCE & POPULATION

DSHS Integrated Client Databases. Females age 10–19 with Apple Health coverage and a subset of females ages 10–19 in foster care in the SFY.



SUPPORTING TABLES | 9 Teen Pregnancy

STATE FISCAL YEAR	ALL APPLE HEALTH								IN FOSTER CARE							
	2017	2018	2019	2020	2021	2022	2023	2024	2017	2018	2019	2020	2021	2022	2023	2024
TOTAL FEMALES AGES 10–19																
Total females, rate	40	36	34	31	29	28	28	27	50	50	49	48	48	55	59	56
Number of females	212,743	216,904	218,637	219,862	224,962	237,080	245,729	246,668	2,581	2,647	2,699	2,524	2,379	2,218	1,983	1,801
MH Tx need, rate	57	50	47	47	45	41	40	40	52	49	51	50	49	56	59	54
Number of females	65,422	69,442	73,353	74,064	79,005	85,980	90,453	87,985	2,024	2,098	2,161	2,024	1,884	1,735	1,603	1,439
SUD Tx need, rate	157	149	144	136	139	133	116	120	110	105	124	104	125	125	130	128
Number of females	9,478	8,690	8,467	7,931	7,301	7,303	8,126	8,115	482	457	442	404	375	296	307	305
COD Tx need, rate	151	140	137	129	133	126	109	115	106	102	125	106	124	124	128	122
Number of females	7,342	7,078	7,098	6,569	6,207	6,268	6,958	7,004	451	430	425	386	356	283	296	294
No known BH Tx need, rate	30	27	25	22	19	19	20	19	32	52	36	39	38	49	57	57
Number of females	145,185	145,850	143,915	144,436	144,863	150,065	154,108	157,572	526	522	521	482	476	470	369	351
FEMALES AGES 10–14																
Total females, rate	2	2	2	2	2	2	2	2	12	*	*	8	*	11	16	13
Number of females	111,775	115,221	117,540	118,963	120,315	124,295	126,321	126,191	1,465	1,497	1,533	1,383	1,286	1,217	1,059	935
MH Tx need, rate	5	4	4	4	4	4	4	4	15	*	*	*	*	13	16	*
Number of females	27,756	29,929	32,318	32,767	34,952	37,903	39,412	38,174	1,109	1,146	1,204	1,086	995	950	856	738
SUD Tx need, rate	30	25	23	32	26	28	27	31	*	*	*	*	*	*	*	*
Number of females	1,476	1,381	1,273	1,261	1,019	1,236	1,544	1,567	129	107	108	96	80	76	83	72
COD Tx need, rate	34	26	25	30	29	28	28	31	*	*	*	*	*	*	*	*
Number of females	1,167	1,157	1,058	1,066	908	1,093	1,345	1,354	126	102	106	92	73	75	78	69
No known BH Tx need, rate	1	1	1	1	1	1	1	1	0	*	*	*	*	*	*	*
Number of females	83,710	85,068	85,007	86,001	85,252	86,249	86,710	87,804	353	346	327	293	284	266	198	194
FEMALES AGES 15–17																
Total females, rate	42	37	36	31	30	28	29	27	72	**	**	70	**	59	71	79
Number of females	62,865	63,838	63,545	63,565	64,725	68,703	73,041	76,241	880	891	884	816	750	660	608	595
MH Tx need, rate	54	49	46	42	42	37	36	36	73	**	**	**	**	60	70	**
Number of females	23,925	25,190	26,125	25,884	26,939	29,446	31,598	31,724	735	753	741	687	608	530	511	489
SUD Tx need, rate	113	114	109	94	109	96	81	84	**	**	**	**	**	**	**	**
Number of females	4,561	4,158	4,161	3,874	3,425	3,264	3,670	3,912	284	277	266	232	204	141	155	169
COD Tx need, rate	112	111	107	92	107	95	79	81	**	**	**	**	**	**	**	**
Number of females	3,635	3,487	3,614	3,287	2,959	2,860	3,222	3,438	261	263	257	223	195	136	153	163
No known BH Tx need, rate	32	28	27	22	20	20	22	19	*	*	*	*	*	*	*	120
Number of females	38,014	37,977	36,873	37,094	37,320	38,853	40,995	44,043	122	124	134	120	133	125	95	100

STATE FISCAL YEAR	ALL APPLE HEALTH								IN FOSTER CARE							
	2017	2018	2019	2020	2021	2022	2023	2024	2017	2018	2019	2020	2021	2022	2023	2024
FEMALES AGES 18–19																
Total females, rate	148	136	129	122	109	102	98	98	199	239	174	163	155	208	180	151
Number of females	38,103	37,845	37,552	37,334	39,922	44,082	46,367	44,236	236	259	282	325	343	341	316	271
MH Tx need, rate	165	149	143	144	134	125	117	120	194	226	176	167	153	212	186	156
Number of females	13,741	14,323	14,910	15,413	17,114	18,631	19,443	18,087	180	199	216	251	281	255	236	212
SUD Tx need, rate	270	250	243	241	214	222	206	225	261	178	206	211	220	266	232	266
Number of females	3,441	3,151	3,033	2,796	2,857	2,803	2,912	2,636	69	73	68	76	91	79	69	64
COD Tx need, rate	260	235	232	232	205	211	193	219	234	185	210	211	216	264	215	242
Number of females	2,540	2,434	2,426	2,216	2,340	2,315	2,391	2,212	64	65	62	71	88	72	65	62
No known BH Tx need, rate	132	123	115	103	87	82	80	80	*	308	*	*	*	190	145	*
Number of females	23,461	22,805	22,035	21,341	22,291	24,963	26,403	25,725	51	52	60	69	59	79	76	57

NOTES: Pregnant females were identified by having at least one pregnancy-related diagnosis (e.g., encounter for supervision of normal first pregnancy, anemia complicating pregnancy) or procedure (e.g., prenatal testing, cesarean delivery) in the SFY. Note that the population for this measure differs from that of other measures in this dashboard; it focuses on females ages 10–19 to make results comparable to other state and national reports on teen pregnancy. *To protect the privacy of individuals, cells in this data product that represent 10 or fewer persons are not displayed. **Some additional cells with n>10 have been suppressed to ensure that cells with small numbers cannot be recalculated.



Behavioral Health Treatment Needs and Outcomes among Apple Health-Enrolled Children, Youth, and Young Adults in Washington State

[Back to Contents](#)

March 2026

MEASURE 10

Suicidal Ideation

INDICATOR

Proportion of children, youth, and young adults ages 6–25 with suicidal ideation at least once in the SFY.

ALL APPLE HEALTH:

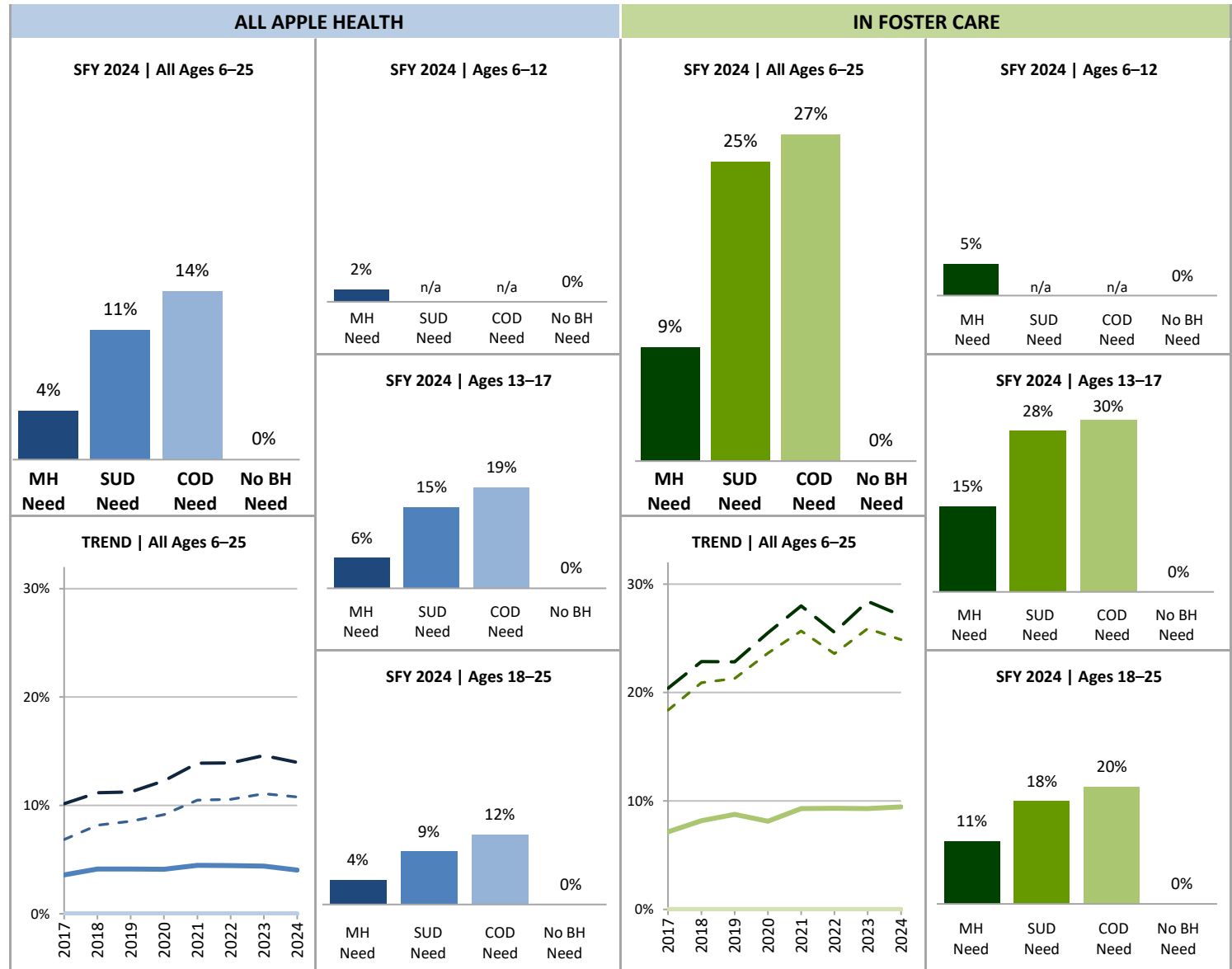
- MH Tx Need
- - - SUD Tx Need
- - - COD Tx Need
- No Known BH Tx Need

IN FOSTER CARE:

- MH Tx Need
- - - SUD Tx Need
- - - COD Tx Need
- No Known BH Tx Need

SOURCE & POPULATION

DSHS Integrated Client Databases. All Apple Health Enrollees ages 6–25 and the subset of those in foster care in the SFY.



SUPPORTING TABLES | 10 Suicidal Ideation

STATE FISCAL YEAR	ALL APPLE HEALTH								IN FOSTER CARE							
	2017	2018	2019	2020	2021	2022	2023	2024	2017	2018	2019	2020	2021	2022	2023	2024
TOTAL PERSONS AGES 6–25																
Total persons, percent	1%	1%	1%	1%	1%	1%	1%	1%	5%	6%	7%	6%	7%	7%	7%	7%
N with suicidal ideation	8,302	9,958	10,200	9,981	11,200	11,879	12,289	11,057	434	509	549	480	484	445	401	381
Total number of persons	830,825	833,710	818,755	810,638	827,387	884,036	931,005	926,096	8,100	8,203	8,255	7,782	6,988	6,582	5,942	5,468
MH Tx need, percent	4%	4%	4%	4%	4%	4%	4%	4%	7%	8%	9%	8%	9%	9%	9%	9%
N with suicidal ideation	8,302	9,958	10,200	9,981	11,200	11,879	12,289	11,057	434	509	549	480	484	445	401	381
Total number of persons	231,316	241,209	246,504	242,948	250,541	266,375	279,872	274,615	6,067	6,222	6,267	5,901	5,208	4,769	4,307	4,028
SUD Tx need, percent	7%	8%	9%	9%	10%	11%	11%	11%	18%	21%	21%	24%	26%	24%	26%	25%
N with suicidal ideation	3,555	3,909	3,907	3,908	4,169	4,070	4,418	4,085	165	178	187	191	190	147	152	141
Total number of persons	51,891	47,783	45,704	42,704	39,758	38,498	39,871	37,909	898	851	878	808	740	623	587	567
COD Tx need, percent	10%	11%	11%	12%	14%	14%	15%	14%	20%	23%	23%	26%	28%	26%	28%	27%
N with suicidal ideation	3,555	3,909	3,907	3,908	4,169	4,070	4,418	4,085	165	178	187	191	190	147	152	141
Total number of persons	35,002	34,959	34,714	31,873	30,004	29,220	30,255	29,242	809	779	819	749	679	575	535	520
No known BH Tx need, percent	0%	0%	0%	0%	0%	0%	0%	0%	0%	0%	0%	0%	0%	0%	0%	0%
N with suicidal ideation	0	0	0	0	0	0	0	0	0	0	0	0	0	0	0	0
Total number of persons	582,620	579,677	561,261	556,859	567,092	608,383	641,517	642,814	1,944	1,909	1,929	1,822	1,719	1,765	1,583	1,393
PERSONS AGES 6–12																
Total persons, percent	<1%	<1%	<1%	<1%	<1%	<1%	<1%	<1%	2%	3%	3%	3%	3%	3%	3%	4%
N with suicidal ideation	952	1,311	1,495	1,359	1,579	1,751	1,789	1,745	99	128	162	114	117	108	98	105
Total number of persons	349,488	354,341	352,168	348,943	347,210	356,200	364,219	367,697	4,785	4,815	4,776	4,402	3,729	3,363	3,119	2,828
MH Tx need, percent	1%	2%	2%	2%	2%	2%	2%	2%	3%	4%	5%	3%	4%	5%	4%	5%
N with suicidal ideation	952	1,311	1,495	1,359	1,579	1,751	1,789	1,745	99	128	162	114	117	108	98	105
Total number of persons	73,629	77,048	79,068	77,239	75,148	76,105	79,696	81,958	3,463	3,560	3,523	3,301	2,729	2,378	2,218	2,036
No known BH Tx need, percent	0%	0%	0%	0%	0%	0%	0%	0%	0%	0%	0%	0%	0%	0%	0%	0%
N with suicidal ideation	0	0	0	0	0	0	0	0	0	0	0	0	0	0	0	0
Total number of persons	275,859	277,293	273,100	271,704	272,062	280,095	284,523	285,739	1,322	1,255	1,253	1,101	1,000	985	901	792

STATE FISCAL YEAR	ALL APPLE HEALTH								IN FOSTER CARE							
	2017	2018	2019	2020	2021	2022	2023	2024	2017	2018	2019	2020	2021	2022	2023	2024
PERSONS AGES 13–17																
Total persons, percent	2%	2%	2%	2%	2%	2%	2%	2%	11%	12%	12%	12%	13%	13%	13%	12%
N with suicidal ideation	3,680	4,445	4,363	4,258	4,775	5,374	5,453	4,828	304	340	333	309	307	274	249	219
Total number of persons	215,656	219,227	219,237	220,875	227,994	243,372	255,243	259,597	2,712	2,732	2,758	2,561	2,325	2,099	1,938	1,828
MH Tx need, percent	5%	6%	6%	6%	6%	7%	6%	6%	14%	15%	15%	15%	17%	17%	16%	15%
N with suicidal ideation	3,680	4,445	4,363	4,258	4,775	5,374	5,453	4,828	304	340	333	309	307	274	249	219
Total number of persons	67,806	71,429	74,294	73,334	75,506	81,063	86,141	85,443	2,177	2,200	2,242	2,032	1,828	1,638	1,531	1,461
SUD Tx need, percent	10%	12%	12%	13%	16%	18%	17%	15%	20%	23%	23%	26%	30%	28%	29%	28%
N with suicidal ideation	1,305	1,470	1,439	1,439	1,418	1,575	1,735	1,595	148	156	155	158	152	103	117	110
Total number of persons	13,326	12,312	11,944	10,991	9,086	8,545	9,946	10,552	736	685	682	603	505	371	398	391
COD Tx need, percent	14%	15%	15%	17%	19%	23%	22%	19%	22%	24%	24%	28%	33%	29%	31%	30%
N with suicidal ideation	1,305	1,470	1,439	1,439	1,418	1,575	1,735	1,595	148	156	155	158	152	103	117	110
Total number of persons	9,499	9,564	9,690	8,663	7,287	6,912	8,008	8,459	672	641	649	567	467	353	374	366
No known BH Tx need, percent	0%	0%	0%	0%	0%	0%	0%	0%	0%	0%	0%	0%	0%	0%	0%	0%
N with suicidal ideation	0	0	0	0	0	0	0	0	0	0	0	0	0	0	0	0
Total number of persons	144,023	145,050	142,689	145,213	150,689	160,676	167,164	172,061	471	488	483	493	459	443	383	342
PERSONS AGES 18–25																
Total persons, percent	1%	2%	2%	2%	2%	2%	2%	2%	5%	6%	7%	7%	6%	6%	6%	7%
N with suicidal ideation	3,670	4,202	4,342	4,364	4,846	4,754	5,047	4,484	31	41	54	57	60	63	54	57
Total number of persons	265,681	260,142	247,350	240,820	252,183	284,464	311,543	298,802	603	656	721	819	934	1,120	885	812
MH Tx need, percent	4%	5%	5%	5%	5%	4%	4%	4%	7%	9%	11%	10%	9%	8%	10%	11%
N with suicidal ideation	3,670	4,202	4,342	4,364	4,846	4,754	5,047	4,484	31	41	54	57	60	63	54	57
Total number of persons	89,881	92,732	93,142	92,375	99,887	109,207	114,035	107,214	427	462	502	568	651	753	558	531
SUD Tx need, percent	6%	7%	7%	8%	9%	8%	9%	9%	10%	13%	16%	16%	16%	17%	19%	18%
N with suicidal ideation	2,250	2,439	2,468	2,469	2,751	2,495	2,683	2,490	17	22	32	33	38	44	35	31
Total number of persons	38,565	35,471	33,760	31,713	30,672	29,953	29,925	27,357	162	166	196	205	235	252	189	176
COD Tx need, percent	9%	10%	10%	11%	12%	11%	12%	12%	12%	16%	19%	18%	18%	20%	22%	20%
N with suicidal ideation	2,250	2,439	2,468	2,469	2,751	2,495	2,683	2,490	17	22	32	33	38	44	35	31
Total number of persons	25,503	25,395	25,024	23,210	22,717	22,308	22,247	20,783	137	138	170	182	212	222	161	154
No known BH Tx need, percent	0%	0%	0%	0%	0%	0%	0%	0%	0%	0%	0%	0%	0%	0%	0%	0%
N with suicidal ideation	0	0	0	0	0	0	0	0	0	0	0	0	0	0	0	0
Total number of persons	162,738	157,334	145,472	139,942	144,341	167,612	189,830	185,014	151	166	193	228	260	337	299	259

NOTES: Suicidal ideation was flagged for persons who received any ICD-10 diagnosis of R45851 ("suicidal ideations") in the measurement period in DSHS Integrated Client Databases (ICDB). Note that all persons with suicidal ideation are considered to have MH Tx Need, thus all numbers for the "No known BH Tx need" population are zero by definition.



Behavioral Health Treatment Needs and Outcomes among Apple Health-Enrolled Children, Youth, and Young Adults in Washington State

TECHNICAL NOTES

SOURCE

- Data come from DSHS Integrated Client Databases (ICDB), a linked set of longitudinal databases with 2 decades of detailed risk, service utilization, expenditure, and outcome data for persons served by the Washington State Department of Social and Health Services (DSHS), Health Care Authority (HCA), and Department of Children, Youth, and Families (DCYF). The ICDB draws information from over 30 state agency data systems. See <https://www.dshs.wa.gov/sites/default/files/rda/reports/research-11-205.pdf> for more information.

POPULATION

- All young people ages 0–25 enrolled in Apple Health during the state fiscal year (SFY), and the subset of these persons ever in foster care placement in the SFY. **Apple Health** includes full-benefit Medicaid under Title XIX of the Social Security Act (SSA); full-benefit State Children's Health Insurance Program (SCHIP) under SSA Title XXI; and state-funded Apple Health coverage for non-federally qualifying children (Children's Health Program). Included **foster care children** may enter foster care in the SFY, exit foster care in the SFY, or live in foster care placement throughout the year. In this dashboard, foster care refers to any out-of-home placement under the authority of DCYF (formerly DSHS' Children's Administration), including unpaid unlicensed relative care. **Youth and young adults:** persons in the 13–25 age range. **Young people:** persons in the full age range of 0–25 years. Note that most youth in foster care exit at age 18, while a subset opt to enroll in extended foster care through age 21 (or slightly older over a temporary period during the COVID pandemic, from Jan 27, 2020, to September 30, 2021). Thus, the foster care population presented has few to no persons in the 22–25 age range, and is not directly comparable in terms of age to the Apple Health population.

CATEGORIES OF TREATMENT NEED (2-year window)

- Mental health treatment need (MH Tx need):** In the past 24 months, any mental health diagnosis, prescription or service recorded in state administrative data. The following diagnostic categories are included: psychotic; mania/bipolar; depression; suicide attempt/self-harm; suicidal ideation; anxiety; ADHD; impulse/conduct disorder; trauma/stressor disorder; somatoform disorder; factitious disorder; selected personality disorders (paranoid, schizoid, borderline); eating/feeding disorders; miscellaneous MH disorders. The following medication classes are included: antipsychotic, antimania, antidepressant, antianxiety, and ADHD. Mental health services include inpatient and outpatient. MH Tx need can occur alone (MH Tx need only) or in combination with SUD Tx need (COD Tx need). Note this definition does not capture indications of MH Tx need not included in by state administrative data such as mental health conditions for which services are not pursued or mental health services paid through other insurance (e.g., private, military, Medicare).
- Substance use disorder treatment need (SUD Tx need):** In the past 24 months, at least one substance-related diagnosis, procedure, prescription, treatment, or arrest. As SUD Tx need is rare before adolescence, SUD is not measured for children under age 13. SUD Tx may occur alone (SUD Tx need only) or in combination with MH Tx need (COD Tx need). Note this definition does not capture indications of SUD Tx need not included in state administrative data such as substance use problems for which services are not pursued or substance use disorder services paid through other insurance (e.g., private, military, Medicare).
- Co-occurring treatment needs (COD Tx need):** Presence of both a MH Tx need and SUD Tx need during the same 24-month period (but not necessarily overlapping in the same year or month). As SUD Tx need is rare before adolescence, COD is not measured for children under age 13.
- No known behavioral health treatment need (No known BH Tx need):** Neither a MH Tx need nor a SUD Tx need is indicated during the 24-month period.



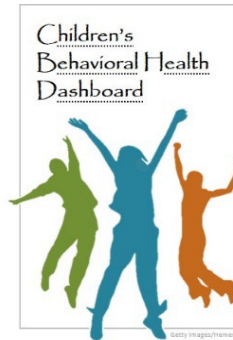
Behavioral Health Treatment Needs and Outcomes among Apple Health-Enrolled Children, Youth, and Young Adults in Washington State

REFERENCES

- Braciszewski, J. and R. L. Stout. (2012). "Substance use among current and former foster youth: A systematic review." *Children and Youth Services Review* , 34: 2337-2344.
- Dubois-Comtois, K., Bussi eres, E. L., Cyr, C., St-Onge, J., Baudry, C., Milot, T., & Labb e, A. P. (2021). Are children and adolescents in foster care at greater risk of mental health problems than their counterparts? A meta-analysis. *Children and Youth Services Review* , 127 , 106100.
- Keefe, R. J., Cummings, A. D., Greeley, C. S., & Van Horne, B. S. (2022). Mental health and developmental disorder diagnoses of foster and nonfoster children enrolled in Medicaid. *Journal of Developmental & Behavioral Pediatrics*, 43 (5), e296-e303.
- Mancuso, D. and Huber, A. (2021). "Washington State Health and Human Services Integrated Client Databases." DSHS Research and Data Analysis: Olympia, WA.
- McGuire, A., Cho, B., Huffhines, L., Gusler, S., Brown, S., & Jackson, Y. (2018). The relation between dimensions of maltreatment, placement instability, and mental health among youth in foster care. *Child abuse & neglect*, 86 , 10-21.
- Patton, D., Liu, Q., Lucenko, B., Adelson, J., Mancuso, D., and Felver, B. (2018). "Childhood Adversity and Behavioral Health Costs for Adolescents in Washington State." DSHS Research and Data Analysis: Olympia, WA.
- Patton, D. A., Liu, Q., Adelson, J. D., & Lucenko, B. A. (2019). Assessing the social determinants of health care costs for Medicaid-enrolled adolescents in Washington State using administrative data. *Health Services Research*, 54(1), 52-63.
- Putnam-Hornstein, E., Foust, R., Cuccaro-Alamin, S., Prindle, J., Nghiem, H., Ahn, E., & Palmer, L. (2023). A population-based study of mental health diagnoses and child protection system involvement among Medicaid-insured children. *The Journal of Pediatrics*, 252 , 117-123.
- Washington, T., Wrenn, A., Kaye, H., Priester, M. A., Colombo, G., Carter, K., ... & Coakley, T. (2018). Psychosocial factors and behavioral health outcomes among children in Foster and Kinship care: A systematic review. *Children and Youth Services Review*, 90 , 118-133.
- Xu, Y., Bright, C. L., Barth, R. P., & Ahn, H. (2021). Poverty and economic pressure, financial assistance, and children's behavioral health in kinship care. *Child maltreatment*, 26 (1), 28-39.

Behavioral Health Treatment Needs and Outcomes among Apple Health-Enrolled Children, Youth, and Young Adults in Washington State

March 2026



RDA CONTRIBUTORS

Andrew Iverson, PhD • Bridget Pavelle, PhD • Barbara Lucenko, PhD • Barbara E.M. Felver, MES, MPA

ACKNOWLEDGMENTS

Several of the measures included in this dashboard were modeled from measures developed in past years in collaboration with the Children's Behavioral Health Data and Quality Team, a diverse group of children's behavioral health stakeholders in Washington State.