

Behavioral Health Treatment Needs and Outcomes among Medicaid-Enrolled Children in Washington State

Children Ages 0-20 Enrolled in Medicaid, SFY 2014 - SFY 2021

November 2023

This dashboard provides a snapshot of the behavioral health needs, characteristics, and outcomes of children and youth (age 0- 20) on Medicaid in Washington State. Differences between behavioral health needs and outcomes of children and youth enrolled in Medicaid and those in foster care are also highlighted. This information can help to identify cross-system opportunities for behavioral health service delivery. Behavioral health (BH) needs include both mental health (MH) and substance use disorder (SUD) treatment (Tx) needs. Children with MH Tx need have at least one MH-related diagnosis, prescription, or treatment recorded in Washington State's Medicaid data system. Children with SUD Tx need have at least one substance use-related diagnosis, procedure, prescription, or treatment recorded in Washington State's Medicaid data system, or a substance use-related arrest recorded in other administrative data.

In Section 1 of this dashboard, rates of BH needs are compared across demographic categories, foster care status, Medicaid coverage type, cross-system involvement, region, and history of abuse and neglect. Consistent with research from other states, findings identify a substantially higher prevalence of behavioral health needs among children in foster care compared to children receiving publicly funded medical coverage more broadly (Braciszewski and Stout 2012; Dubois-Comtois et al. 2021; Keefe et al. 2022; Putnam-Hornstein et al. 2023). Previous research has identified past exposure to adverse experiences — including factors such as economic deprivation, instability in living situation, family conflict, trauma and abuse — as contributing factors to foster children's greater BH needs, more frequent BH service utilization, and higher BH system costs (McGuire et al. 2018; Patton et al. 2018; Patton et al. 2019; Washington et al. 2018; Xu et al. 2021).

In Section 2 of this report, outcomes including BH Tx penetration and utilization, psychotropic polypharmacy, juvenile legal involvement, emergency department utilization, injury rates, and pregnancy are examined over time and compared between children in the general Washington State Medicaid population and those in foster care. Data are also stratified by specific BH needs and age groups.

The time period covered in this report includes Medicaid expansion (January 2014), a transition in diagnosis coding systems (ICD-9 to ICD-10 in October 2015), and the integration of behavioral and physical health in Medicaid contracting (starting in April 2016, and phased in by region) and the COVID-19 pandemic (starting in Washington in March 2020). Trends we observe in this report may result from changes in the size and composition of the Medicaid population, changes in Medicaid contracting and delivery systems, changes in the associated data systems, and changes in demand for services, in addition to others.



Behavioral Health Treatment Needs and Outcomes among Medicaid-Enrolled Children in Washington State

November 2023

CONTENTS

SECTION 1. Characteristics and Risk Factors

- [A](#) Population Reference Table, SFY 2014-2021
- [B](#) Indications of Mental Health Treatment Need, SFY 2021
- [C](#) Behavioral Health Treatment Needs of Medicaid-Enrolled Children, by Gender and Age Group, SFY 2021
- [D](#) Behavioral Health Treatment Needs of Medicaid-Enrolled Children, by Race/Ethnicity, SFY 2021
- [E](#) Behavioral Health Treatment Needs of Medicaid-Enrolled Children, by Service Delivery System, SFY 2021
- [F](#) Behavioral Health Treatment Needs of Medicaid-Enrolled Children, by Region, SFY 2021
- [G](#) Behavioral Health Treatment Needs of Medicaid-Enrolled Children, by County, SFY 2021
- [H](#) Behavioral Health Treatment Needs of Medicaid-Enrolled Children, by Abuse and Neglect History, SFY 2021

SECTION 2. Outcome Measures

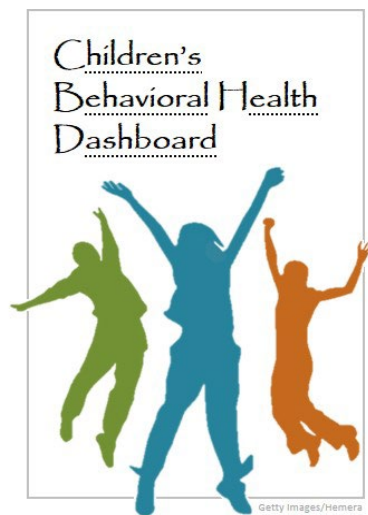
- [MEASURE 1](#) Treatment Rate for Children with Mental Health Treatment Need
- [MEASURE 2](#) Treatment Rate for Youth with Substance Use Disorder Treatment Need and Co-Occurring Treatment Need
- [MEASURE 3](#) Mental Health Crisis Services
- [MEASURE 4](#) Mental Health Inpatient Services
- [MEASURE 5](#) Psychotropic Polypharmacy
- [MEASURE 6](#) Criminal Legal Involvement
- [MEASURE 7](#) Emergency Department Utilization
- [MEASURE 8](#) Injuries
- [MEASURE 9](#) Teen Pregnancy

Notes and References

- [NOTES](#) Technical Notes
- [REFERENCES](#) References
- [LAST PAGE](#) Contributors and Acknowledgements

ACRONYMS

BH	Behavioral health (mental health and/or substance use)
BHO	Behavioral Health Organization, a managed care entity specific to behavioral health services
CLIP	Children’s Long-term Inpatient mental health services
COD	Co-occurring disorder (both mental health and substance use disorder treatment needs)
CSTC	Child Study and Treatment Center, the state-run CLIP facility
DBHR	Division of Behavioral Health and Recovery, Health Care Authority
DCYF	Department of Children, Youth, and Families
DDA	Developmental Disability Administration, Department of Social and Health Services
DSHS	Department of Social and Health Services
ESA	Economic Services Administration, Department of Social and Health Services
HCA	Health Care Authority
ICD	International Classification of Diseases
ICDB	DSHS Integrated Client Databases
IMC	Integrated Managed Care
IP	Inpatient
MH	Mental health
RDA	Research and Data Analysis Division, Department of Social and Health Services
SCHIP	State Children’s Health Insurance Program
SFY	State fiscal year (from July 1 of the previous calendar year through June 30 of the stated year)
SUD	Substance use disorder
Tx	Treatment



SECTION 1

Characteristics and Risk Factors



Behavioral Health Treatment Needs and Outcomes among Medicaid-Enrolled Children in Washington State

[Back to Contents](#)

November 2023

A.1 Population Reference Table, SFY 2018-2021

SFY 2018 - SFY 2021 (PRIOR YEARS AVAILABLE IN SUBSEQUENT TABLE) • BEHAVIORAL HEALTH TREATMENT NEEDS (MEASURED IN CURRENT AND PREVIOUS SFY)

STATE FISCAL YEAR	ALL MEDICAID								IN FOSTER CARE							
	2018		2019		2020		2021		2018		2019		2020		2021	
	N	%	N	%	N	%	N	%	N	%	N	%	N	%	N	%
TOTAL PERSONS AGE 0 – 20	1,004,194	100%	992,755	100%	980,961	100%	986,612	100%	16,151	100%	15,981	100%	14,826	100%	13,220	100%
MH Tx need	203,724	20%	218,680	22%	218,675	22%	222,678	23%	8,162	51%	8,251	52%	7,616	51%	6,713	51%
SUD Tx need	22,633	2%	22,101	2%	20,881	2%	18,768	2%	885	5%	922	6%	868	6%	769	6%
Co-occurring Tx need (MH + SUD)	16,800	2%	17,329	2%	15,978	2%	14,538	1%	813	5%	867	5%	810	5%	713	5%
No known BH Tx need	794,637	79%	769,303	77%	757,383	77%	759,704	77%	7,917	49%	7,675	48%	7,152	48%	6,451	49%
PERSONS AGE 0 – 4	296,419	100%	289,008	100%	280,066	100%	273,568	100%	7,190	100%	6,912	100%	6,321	100%	5,650	100%
MH Tx need	15,127	5%	15,700	5%	14,811	5%	14,493	5%	1,459	20%	1,431	21%	1,274	20%	1,124	20%
No known BH Tx need	281,292	95%	273,308	95%	265,255	95%	259,075	95%	5,731	80%	5,481	79%	5,047	80%	4,526	80%
PERSONS AGE 5 – 11	353,478	100%	348,853	100%	342,574	100%	339,927	100%	5,069	100%	5,052	100%	4,605	100%	3,914	100%
MH Tx need	71,312	20%	74,277	21%	71,306	21%	68,982	20%	3,617	71%	3,604	71%	3,272	71%	2,745	70%
No known BH Tx need	282,166	80%	274,576	79%	271,268	79%	270,945	80%	1,452	29%	1,448	29%	1,333	29%	1,169	30%
PERSONS AGE 12 – 17	255,428	100%	257,559	100%	261,712	100%	270,434	100%	3,262	100%	3,315	100%	3,110	100%	2,788	100%
MH Tx need	83,298	33%	92,958	36%	95,909	37%	99,943	37%	2,642	81%	2,726	82%	2,524	81%	2,232	80%
SUD Tx need	12,462	5%	12,245	5%	11,564	4%	9,574	4%	722	22%	727	22%	666	21%	540	19%
Co-occurring Tx need (MH + SUD)	9,698	4%	10,029	4%	9,202	4%	7,741	3%	681	21%	697	21%	629	20%	505	18%
No known BH Tx need	169,366	66%	162,385	63%	163,441	62%	168,658	62%	579	18%	559	17%	549	18%	521	19%
PERSONS AGE 18 – 20	98,869	100%	97,335	100%	96,609	100%	102,683	100%	630	100%	702	100%	790	100%	868	100%
MH Tx need	33,987	34%	35,745	37%	36,649	38%	39,260	38%	444	70%	490	70%	546	69%	612	71%
SUD Tx need	10,171	10%	9,856	10%	9,317	10%	9,194	9%	163	26%	195	28%	202	26%	229	26%
Co-occurring Tx need (MH + SUD)	7,102	7%	7,300	7%	6,776	7%	6,797	7%	132	21%	170	24%	181	23%	208	24%
No known BH Tx need	61,813	63%	59,034	61%	57,419	59%	61,026	59%	155	25%	187	27%	223	28%	235	27%

SOURCE & POPULATION: DSHS Integrated Client Databases. All children and youth with Medicaid coverage (includes SCHIP) in SFY and the subset of children and youth ever in foster care in SFY.

DEFINITIONS: Number and proportion of Medicaid-enrolled children who have MH Tx need, SUD Tx need, or COD Tx need (MH + SUD) and no known BH Tx need in the current or previous SFY. Children with MH Tx need have a MH-related diagnosis, procedure, prescription, or treatment in the current or previous SFY. Children with SUD Tx need have at least one substance-related diagnosis, procedure, prescription, treatment, or arrest in the current or previous SFY in state administrative data. Children with COD Tx need have indications of both MH Tx need and SUD Tx need in the same two-year time window, but not necessarily overlapping in the same month or year in state administrative data. As SUD Tx need is rare before adolescence, SUD and COD Tx needs are not measured for children under age 12. Children with no known BH Tx need are children with neither a MH Tx need nor a SUD Tx need present during the 24-month period. See technical notes for additional detail.

A.2 Population Reference Table, SFY 2014-2017

SFY 2014 - SFY 2017 • BEHAVIORAL HEALTH TREATMENT NEEDS (MEASURED IN CURRENT AND PREVIOUS SFY)

STATE FISCAL YEAR	ALL MEDICAID								IN FOSTER CARE							
	2014		2015		2016		2017		2014		2015		2016		2017	
	N	%	N	%	N	%	N	%	N	%	N	%	N	%	N	%
TOTAL PERSONS AGE 0 – 20	897,203	100%	937,229	100%	976,919	100%	997,722	100%	15,265	100%	15,471	100%	15,565	100%	16,125	100%
MH Tx need	150,467	17%	165,280	18%	179,957	18%	189,743	19%	7,750	51%	7,858	51%	7,716	50%	7,927	49%
SUD Tx need	20,997	2%	23,389	2%	25,005	3%	24,352	2%	1,007	7%	1,006	7%	981	6%	929	6%
Co-occurring Tx need (MH + SUD)	13,217	1%	15,050	2%	16,532	2%	16,410	2%	919	6%	934	6%	893	6%	848	5%
No known BH Tx need	738,956	82%	763,610	81%	788,489	81%	800,037	80%	7,427	49%	7,541	49%	7,761	50%	8,117	50%
PERSONS AGE 0 – 4	285,833	100%	287,742	100%	295,670	100%	298,214	100%	6,839	100%	6,801	100%	6,911	100%	7,211	100%
MH Tx need	13,111	5%	13,397	5%	13,902	5%	13,869	5%	1,407	21%	1,364	20%	1,298	19%	1,342	19%
No known BH Tx need	272,722	95%	274,345	95%	281,768	95%	284,345	95%	5,432	79%	5,437	80%	5,613	81%	5,869	81%
PERSONS AGE 5 – 11	316,307	100%	326,880	100%	341,127	100%	349,909	100%	4,741	100%	4,915	100%	4,936	100%	5,104	100%
MH Tx need	57,141	18%	59,997	18%	63,898	19%	67,009	19%	3,341	70%	3,448	70%	3,454	70%	3,561	70%
No known BH Tx need	259,166	82%	266,883	82%	277,229	81%	282,900	81%	1,400	30%	1,467	30%	1,482	30%	1,543	30%
PERSONS AGE 12 – 17	225,346	100%	232,850	100%	242,807	100%	250,471	100%	3,385	100%	3,348	100%	3,216	100%	3,223	100%
MH Tx need	61,670	27%	66,735	29%	72,578	30%	76,766	31%	2,772	82%	2,750	82%	2,606	81%	2,604	81%
SUD Tx need	13,826	6%	13,810	6%	14,122	6%	13,327	5%	934	28%	896	27%	863	27%	774	24%
Co-occurring Tx need (MH + SUD)	9,023	4%	9,384	4%	9,742	4%	9,312	4%	857	25%	843	25%	792	25%	714	22%
No known BH Tx need	158,873	71%	161,689	69%	165,849	68%	169,690	68%	536	16%	545	16%	539	17%	559	17%
PERSONS AGE 18 – 20	69,717	100%	89,757	100%	97,315	100%	99,128	100%	300	100%	407	100%	502	100%	587	100%
MH Tx need	18,545	27%	25,151	28%	29,579	30%	32,099	32%	230	77%	296	73%	358	71%	420	72%
SUD Tx need	7,171	10%	9,579	11%	10,883	11%	11,025	11%	73	24%	110	27%	118	24%	155	26%
Co-occurring Tx need (MH + SUD)	4,194	6%	5,666	6%	6,790	7%	7,098	7%	62	21%	91	22%	101	20%	134	23%
No known BH Tx need	48,195	69%	60,693	68%	63,643	65%	63,102	64%	59	20%	92	23%	127	25%	146	25%

SOURCE & POPULATION: DSHS Integrated Client Databases. All children and youth with Medicaid coverage (includes SCHIP) in SFY and the subset of children and youth ever in foster care in SFY.

DEFINITIONS: Number and proportion of Medicaid-enrolled children who have MH Tx need, SUD Tx need, or COD Tx need (MH + SUD) and no known BH Tx need in the current or previous SFY. Children with MH Tx need have a MH-related diagnosis, procedure, prescription, or treatment in the current or previous SFY. Children with SUD Tx need have at least one substance-related diagnosis, procedure, prescription, treatment, or arrest in the current or previous SFY in state administrative data. Children with COD Tx need have indications of both MH Tx need and SUD Tx need in the same two-year time window, but not necessarily overlapping in the same month or year in state administrative data. As SUD Tx need is rare before adolescence, SUD and COD Tx needs are not measured for children under age 12. Children with no known BH Tx need are children with neither a MH Tx need nor a SUD Tx need present during the 24-month period. See technical notes for additional detail.



Behavioral Health Treatment Needs and Outcomes among Medicaid-Enrolled Children in Washington State

[Back to Contents](#)

November 2023

B. Indications of Mental Health Treatment Need, SFY 2021

SFY 2021 • Age 0-20

	ALL MEDICAID AGE 0-20								IN FOSTER CARE AGE 0-20							
	All		MH Tx Need		SUD Tx Need		Co-occurring Tx Need		All		MH Tx Need		SUD Tx Need		Co-occurring Tx Need	
	N	%	N	%	N	%	N	%	N	%	N	%	N	%	N	%
SFY 2021 Total	986,612	100%	222,678	100%	18,768	100%	14,538	100%	13,220	100%	6,713	100%	769	100%	713	100%
Included in MH Tx Need Concept																
Mental Health Diagnoses	136,668	14%	136,642	61%	10,389	55%	10,388	71%	5,315	40%	5,314	79%	590	77%	590	83%
Psychotic disorder	2,665	<1%	2,665	1%	1,141	6%	1,141	8%	226	2%	226	3%	97	13%	97	14%
Mania or bipolar disorder	3,818	<1%	3,818	2%	1,380	7%	1,380	9%	191	1%	191	3%	93	12%	93	13%
Depression	52,361	5%	52,354	24%	7,113	38%	7,113	49%	1,604	12%	1,604	24%	416	54%	416	58%
Anxiety	78,195	8%	78,181	35%	7,540	40%	7,540	52%	3,328	25%	3,327	50%	481	63%	481	67%
ADHD	42,743	4%	42,736	19%	2,411	13%	2,411	17%	1,695	13%	1,695	25%	209	27%	209	29%
Disruptive/impulse/conduct disorder	15,984	2%	15,984	7%	1,246	7%	1,246	9%	1,086	8%	1,086	16%	145	19%	145	20%
Adjustment disorder	23,347	2%	23,342	10%	1,127	6%	1,126	8%	1,870	14%	1,870	28%	109	14%	109	15%
Mental Health Prescriptions Filled	78,088	8%	78,082	35%	7,607	41%	7,607	52%	2,329	18%	2,329	35%	429	56%	429	60%
Antipsychotic medications	10,646	1%	10,646	5%	2,643	14%	2,643	18%	640	5%	640	10%	194	25%	194	27%
Antimania medications	877	<1%	877	0.4%	286	2%	286	2%	55	<1%	55	0.8%	22	3%	22	3%
Antidepressants	40,934	4%	40,933	18%	5,407	29%	5,407	37%	1,216	9%	1,216	18%	330	43%	330	46%
Antianxiety medications	22,266	2%	22,262	10%	3,670	20%	3,670	25%	731	6%	731	11%	223	29%	223	31%
ADHD medications	35,112	4%	35,110	16%	1,641	9%	1,641	11%	1,333	10%	1,333	20%	137	18%	137	19%
Mental Health Services	135,144	14%	135,108	61%	9,358	50%	9,357	64%	5,331	40%	5,331	79%	568	74%	568	80%
MH Outpatient Services	134,886	14%	134,857	61%	9,301	50%	9,300	64%	5,246	40%	5,246	78%	556	72%	556	78%
MH Inpatient Services	3,592	<1%	3,585	2%	1,570	8%	1,570	11%	280	2%	280	4%	137	18%	137	19%
DCYF Behavioral Rehabilitation Services	698	<1%	698	<1%	144	1%	144	1%	676	5%	676	10%	138	18%	138	19%
Not Included in MH Tx Need Concept																
Behavioral Health Diagnoses	122,022	12%	72,465	33%	13,027	69%	10,780	74%	4,879	37%	3,353	50%	610	79%	578	81%
Alcohol Use	3,940	<1%	3163	1%	3938	21%	3162	22%	197	1%	184	3%	197	26%	184	26%
Drug Use	9,595	1%	7988	4%	9588	51%	7984	55%	434	3%	420	6%	434	56%	420	59%
Nicotine Use	9,030	1%	6,705	3%	4,099	22%	3,554	24%	369	3%	340	5%	239	31%	233	33%
Developmental Disorder	52,338	5%	20,608	9%	549	3%	528	4%	2,452	19%	1,204	18%	56	7%	55	8%
Pervasive Developmental Disorder	21,378	2%	13,634	6%	377	2%	371	3%	586	4%	462	7%	33	4%	33	5%
Autism Spectrum Disorder	16,638	2%	11,857	5%	331	2%	328	2%	475	4%	409	6%	29	4%	29	4%
Sleep Disorder	30,644	3%	21,617	10%	2,179	12%	2,129	15%	1,183	9%	958	14%	152	20%	150	21%
Eating Disorder	4,153	<1%	3,070	1%	442	2%	437	3%	148	1%	118	2%	39	5%	39	5%
Other Mental Health Diagnoses	32,449	3%	28,956	13%	3,882	21%	3,826	26%	1,835	14%	1,731	26%	304	40%	303	42%

SOURCE & POPULATION: DSHS Integrated Client Databases. All children and youth with Medicaid coverage (includes SCHIP) and the subset of children and youth ever in foster care in SFY 2021.

NOTES: Children with MH Tx Need have at least one indication (diagnosis, procedure, prescription, treatment) in a 2-year period (SFY 2020-SFY 2021). Detail is shown only for indications that occur in SFY 2021. Autism spectrum disorder falls within broader category of pervasive Developmental Disorder disorder. Other mental health diagnoses include factitious, dissociative/conversion, personality disorder, gender dysphoria, and miscellaneous diagnoses. *To protect individual privacy, cells in this data product that represent 10 or fewer persons are not displayed. **Some additional cells with n>10 have been suppressed to ensure that cells with small numbers cannot be recalculated.

SFY 2021 PERSONS AGE 0-4, AGE 5-11	ALL MEDICAID AGE 0 4				IN FOSTER CARE AGE 0-4				ALL MEDICAID AGE 5 11				IN FOSTER CARE AGE 5-11			
	All		MH Tx Need		All		MH Tx Need		All		MH Tx Need		All		MH Tx Need	
	N	%	N	%	N	%	N	%	N	%	N	%	N	%	N	%
SFY 2021 Total	273,568	100%	14,493	100%	5,650	100%	1,124	100%	339,927	100%	68,982	100%	3,914	100%	2,745	100%
Included in MH Tx Need Concept																
Mental Health Diagnoses	6,983	3%	6,981	48%	764	14%	764	68%	45,049	13%	45,038	65%	2,310	59%	2,309	84%
Psychotic disorder	*	*	*	*	*	*	*	*	**	**	**	**	**	**	**	**
Mania or bipolar disorder	*	*	*	*	*	*	*	*	**	**	**	**	**	**	**	**
Depression	201	<1%	200	1%	31	1%	31	3%	6,733	2%	6,732	10%	310	8%	310	11%
Anxiety	2,639	1%	2,638	18%	302	5%	302	27%	20,239	6%	20,235	29%	1,364	35%	1,363	50%
ADHD	1,493	1%	1,493	10%	127	2%	127	11%	20,533	6%	20,530	30%	869	22%	869	32%
Disruptive/impulse/conduct disorder	2,379	1%	2,379	16%	191	3%	191	17%	8,157	2%	8,157	12%	527	13%	527	19%
Adjustment disorder	1,528	1%	1,528	11%	345	6%	345	31%	10,582	3%	10,578	15%	1,016	26%	1,016	37%
Mental Health Prescriptions Filled	1,396	1%	1,396	10%	86	2%	86	8%	21,740	6%	21,739	32%	870	22%	870	32%
Antipsychotic medications	78	<1%	78	1%	13	<1%	13	1%	2,018	1%	2,018	3%	174	4%	174	6%
Antimania medications	*	*	*	*	*	*	*	*	**	**	**	**	*	*	*	*
Antidepressants	73	<1%	73	1%	*	*	*	*	5,147	2%	5,147	7%	259	7%	259	9%
Antianxiety medications	965	<1%	965	7%	44	1%	44	4%	3,660	1%	3,660	5%	157	4%	157	6%
ADHD medications	387	<1%	387	3%	36	1%	36	3%	16,998	5%	16,997	25%	732	19%	732	27%
Mental Health Services	7,454	3%	7,453	51%	815	14%	815	73%	43,953	13%	43,943	64%	2,302	59%	2,302	84%
MH Outpatient Services	7,421	3%	7,420	51%	809	14%	809	72%	43,922	13%	43,912	64%	2,277	58%	2,277	83%
MH Inpatient Services	32	<1%	32	<1%	*	*	*	*	243	<1%	243	<1%	40	1%	40	1%
DCYF Behavioral Rehabilitation Services	*	*	*	*	*	*	*	*	254	<1%	254	<1%	248	6%	248	9%
Not Included in MH Tx Need Concept																
Behavioral Health Diagnoses	33,612	12%	6,807	47%	1,960	35%	664	59%	35,205	10%	22,195	32%	1,352	35%	1,216	44%
Alcohol Use	0	0%	0	0%	0	0%	0	0%	0	0%	0	0%	0	0%	0	0%
Drug Use	0	0%	0	0%	0	0%	0	0%	0	0%	0	0%	0	0%	0	0%
Nicotine Use	60	<1%	13	0%	*	*	*	*	78	<1%	35	0%	*	*	*	*
Developmental Disorder	26,944	10%	4,959	34%	1,631	29%	482	43%	16,995	5%	9,315	14%	560	14%	475	17%
Pervasive Developmental Disorder	4,538	2%	1,970	14%	167	3%	84	7%	8,617	3%	5,408	8%	232	6%	200	7%
Autism Spectrum Disorder	3,411	1%	1,806	12%	106	2%	69	6%	7,132	2%	4,886	7%	206	5%	183	7%
Sleep Disorder	5,385	2%	1,531	11%	331	6%	149	13%	9,812	3%	6,671	10%	361	9%	333	12%
Eating Disorder	977	<1%	237	2%	50	1%	22	2%	689	<1%	502	1%	19	<1%	17	1%
Other Mental Health Diagnoses	2,628	1%	1,432	10%	299	5%	231	21%	10,207	3%	8,840	13%	708	18%	688	25%

SOURCE & POPULATION: DSHS Integrated Client Databases. All children and youth with Medicaid coverage (includes SCHIP) and the subset of children and youth ever in foster care in SFY 2021. NOTES: Children with a MH Tx Need have at least one indication (diagnosis, procedure, prescription, treatment) in a two-year period (SFY 2017-SFY 2021). Detail is shown here only for indications that occur in SFY 2021. Autism spectrum disorder falls within broader category of pervasive Developmental Disorder. Other mental health diagnoses include factitious, dissociative/conversion, personality disorder, gender dysphoria, and miscellaneous diagnoses. *In order to protect the privacy of individuals, cells in this data product that represent 10 or fewer persons are not displayed. **Some additional cells with n>10 have been suppressed to ensure that cells with small numbers cannot be recalculated.

SFY 2021 PERSONS AGE 12-17	ALL MEDICAID AGE 12 17								IN FOSTER CARE AGE 12-17							
	All		MH Tx Need		SUD Tx Need		Co-occurring Tx Need		All		MH Tx Need		SUD Tx Need		Co-occurring Tx Need	
	N	%	N	%	N	%	N	%	N	%	N	%	N	%	N	%
SFY 2021 Total	270,434	100%	99,943	100%	9,574	100%	7,741	100%	2,788	100%	2,232	100%	540	100%	505	100%
Included in MH Tx Need Concept																
Mental Health Diagnoses	60,430	22%	60,422	60%	5,687	59%	5,686	73%	1,828	66%	1,828	82%	444	82%	444	88%
Psychotic disorder	1,184	<1%	1,184	1%	432	5%	432	6%	138	5%	138	6%	62	11%	62	12%
Mania or bipolar disorder	1,633	1%	1,633	2%	565	6%	565	7%	106	4%	106	5%	55	10%	55	11%
Depression	31,230	12%	31,228	31%	3,949	41%	3,949	51%	1,011	36%	1,011	45%	324	60%	324	64%
Anxiety	37,649	14%	37,644	38%	4,019	42%	4,019	52%	1,352	48%	1,352	61%	366	68%	366	72%
ADHD	16,842	6%	16,840	17%	1,685	18%	1,685	22%	592	21%	592	27%	170	31%	170	34%
Disruptive/impulse/conduct disorder	4,674	2%	4,674	5%	941	10%	941	12%	328	12%	328	15%	121	22%	121	24%
Adjustment disorder	9,237	3%	9,236	9%	752	8%	751	10%	464	17%	464	21%	88	16%	88	17%
Mental Health Prescriptions Filled	36,682	14%	36,679	37%	3,958	41%	3,958	51%	1,081	39%	1,081	48%	320	59%	320	63%
Antipsychotic medications	4,910	2%	4,910	5%	1,208	13%	1,208	16%	345	12%	345	15%	143	26%	143	28%
Antimania medications	464	<1%	464	0.5%	144	2%	144	2%	39	1%	39	1.7%	**	**	**	**
Antidepressants	22,609	8%	22,608	23%	2,861	30%	2,861	37%	751	27%	751	34%	253	47%	253	50%
Antianxiety medications	10,643	4%	10,640	11%	1,781	19%	1,781	23%	411	15%	411	18%	168	31%	168	33%
ADHD medications	14,666	5%	14,666	15%	1,225	13%	1,225	16%	497	18%	497	22%	117	22%	117	23%
Mental Health Services	62,846	23%	62,835	63%	5,347	56%	5,347	69%	1,848	66%	1,848	83%	437	81%	437	87%
MH Outpatient Services	62,723	23%	62,712	63%	5,314	56%	5,314	69%	1,801	65%	1,801	81%	427	79%	427	85%
MH Inpatient Services	2,308	1%	2,308	2%	922	10%	922	12%	199	7%	199	9%	108	20%	108	21%
DCYF Behavioral Rehabilitation Services	399	<1%	399	<1%	**	**	**	**	383	14%	383	17%	**	**	**	**
Not Included in MH Tx Need Concept																
Behavioral Health Diagnoses	34,341	13%	28,831	29%	6,524	68%	5,594	72%	1,189	43%	1,137	51%	426	79%	410	81%
Alcohol Use	1,971	1%	1660	2%	1971	21%	1660	21%	140	5%	131	6%	140	26%	131	26%
Drug Use	4,915	2%	4197	4%	4913	51%	4196	54%	308	11%	301	13%	308	57%	301	60%
Nicotine Use	2,622	1%	2,168	2%	1,413	15%	1,288	17%	194	7%	190	9%	142	26%	142	28%
Developmental Disorder	6,413	2%	4,936	5%	362	4%	350	5%	208	7%	198	9%	43	8%	42	8%
Pervasive Developmental Disorder	5,856	2%	4,534	5%	219	2%	216	3%	145	5%	137	6%	**	**	**	**
Autism Spectrum Disorder	4,584	2%	3,882	4%	200	2%	198	3%	129	5%	123	6%	**	**	**	**
Sleep Disorder	11,190	4%	9,618	10%	1,269	13%	1,242	16%	405	15%	395	18%	121	22%	121	24%
Eating Disorder	1,817	1%	1,695	2%	274	3%	273	4%	64	2%	64	3%	**	**	**	**
Other Mental Health Diagnoses	13,548	5%	12,910	13%	2,061	22%	2,032	26%	677	24%	666	30%	226	42%	226	45%

SOURCE & POPULATION: DSHS Integrated Client Databases. All children and youth with Medicaid coverage (includes SCHIP) and the subset of children and youth ever in foster care in SFY 2021. NOTES: Children with a MH Tx Need have at least one indication (diagnosis, procedure, prescription, treatment) in a two-year period (SFY 2017-SFY 2021). Detail is shown here only for indications that occur in SFY 2021. Autism spectrum disorder falls within broader category of pervasive Developmental Disorder disorder. Other mental health diagnoses include factitious, dissociative/conversion, personality disorder, gender dysphoria, and miscellaneous diagnoses. *In order to protect the privacy of individuals, cells in this data product that represent 10 or fewer persons are not displayed. **Some additional cells with n>10 have been suppressed to ensure that cells with small numbers cannot be recalculated.

SFY 2021 PERSONS AGE 18-20	ALL MEDICAID AGE 18 20								IN FOSTER CARE AGE 18-20							
	All		MH Tx Need		SUD Tx Need		Co-occurring Tx Need		All		MH Tx Need		SUD Tx Need		Co-occurring Tx Need	
	N	%	N	%	N	%	N	%	N	%	N	%	N	%	N	%
SFY 2021 Total	102,683	100%	39,260	100%	9,194	100%	6,797	100%	868	100%	612	100%	229	100%	208	100%
Included in MH Tx Need Concept																
Mental Health Diagnoses	24,206	24%	24,201	62%	4,702	51%	4,702	69%	413	48%	413	67%	146	64%	146	70%
Psychotic disorder	1,247	1%	1,247	3%	709	8%	709	10%	46	5%	46	8%	35	15%	35	17%
Mania or bipolar disorder	2,005	2%	2,005	5%	815	9%	815	12%	62	7%	62	10%	38	17%	38	18%
Depression	14,197	14%	14,194	36%	3,164	34%	3,164	47%	252	29%	252	41%	92	40%	92	44%
Anxiety	17,668	17%	17,664	45%	3,521	38%	3,521	52%	310	36%	310	51%	115	50%	115	55%
ADHD	3,875	4%	3,873	10%	726	8%	726	11%	107	12%	107	17%	39	17%	39	19%
Disruptive/impulse/conduct disorder	774	1%	774	2%	305	3%	305	4%	40	5%	40	7%	24	10%	24	12%
Adjustment disorder	2,000	2%	2,000	5%	375	4%	375	6%	45	5%	45	7%	21	9%	21	10%
Mental Health Prescriptions Filled	18,270	18%	18,268	47%	3,649	40%	3,649	54%	292	34%	292	48%	109	48%	109	52%
Antipsychotic medications	3,640	4%	3,640	9%	1,435	16%	1,435	21%	108	12%	108	18%	51	22%	51	25%
Antimania medications	375	<1%	375	1.0%	142	2%	142	2%	12	1%	12	2.0%	*	*	*	*
Antidepressants	13,105	13%	13,105	33%	2,546	28%	2,546	37%	**	**	**	**	77	34%	77	37%
Antianxiety medications	6,998	7%	6,997	18%	1,889	21%	1,889	28%	119	14%	119	19%	55	24%	55	26%
ADHD medications	3,061	3%	3,060	8%	416	5%	416	6%	68	8%	68	11%	20	9%	20	10%
Mental Health Services	20,891	20%	20,877	53%	4,011	44%	4,010	59%	366	42%	366	60%	131	57%	131	63%
MH Outpatient Services	20,820	20%	20,813	53%	3,987	43%	3,986	59%	359	41%	359	59%	129	56%	129	62%
MH Inpatient Services	1,009	1%	1,002	3%	648	7%	648	10%	**	**	**	**	29	13%	29	14%
DCYF Behavioral Rehabilitation Services	**	**	**	**	*	*	*	*	**	**	**	**	*	*	*	*
Not Included in MH Tx Need Concept																
Behavioral Health Diagnoses	18,864	18%	14,632	37%	6,503	71%	5,186	76%	378	44%	336	55%	184	80%	168	81%
Alcohol Use	1,969	2%	1503	4%	1967	21%	1502	22%	57	7%	53	9%	57	25%	53	25%
Drug Use	4,680	5%	3791	10%	4675	51%	3788	56%	126	15%	119	19%	126	55%	119	57%
Nicotine Use	6,270	6%	4,489	11%	2,686	29%	2,266	33%	164	19%	142	23%	97	42%	91	44%
Developmental Disorder	1,986	2%	1,398	4%	187	2%	178	3%	53	6%	49	8%	13	6%	13	6%
Pervasive Developmental Disorder	2,367	2%	1,722	4%	158	2%	155	2%	42	5%	41	7%	*	*	*	*
Autism Spectrum Disorder	1,511	1%	1,283	3%	131	1%	130	2%	34	4%	34	6%	*	*	*	*
Sleep Disorder	4,257	4%	3,797	10%	910	10%	887	13%	86	10%	81	13%	31	14%	29	14%
Eating Disorder	670	1%	636	2%	168	2%	164	2%	15	2%	15	2%	*	*	*	*
Other Mental Health Diagnoses	6,066	6%	5,774	15%	1,821	20%	1,794	26%	151	17%	146	24%	78	34%	77	37%

SOURCE & POPULATION: DSHS Integrated Client Databases. All children and youth with Medicaid coverage (includes SCHIP) and the subset of children and youth ever in foster care in SFY 2021. NOTES: Children with a MH Tx Need have at least one indication (diagnosis, procedure, prescription, treatment) in a two-year period (SFY 2017-SFY 2021). Detail is shown here only for indications that occur in SFY 2021. Autism spectrum disorder falls within broader category of Pervasive Developmental Disorder disorder. Other mental health diagnoses include factitious, dissociative/conversion, personality disorder, gender dysphoria, and miscellaneous diagnoses. *In order to protect the privacy of individuals, cells in this data product that represent 10 or fewer persons are not displayed. **Some additional cells with n>10 have been suppressed to ensure that cells with small numbers cannot be recalculated.



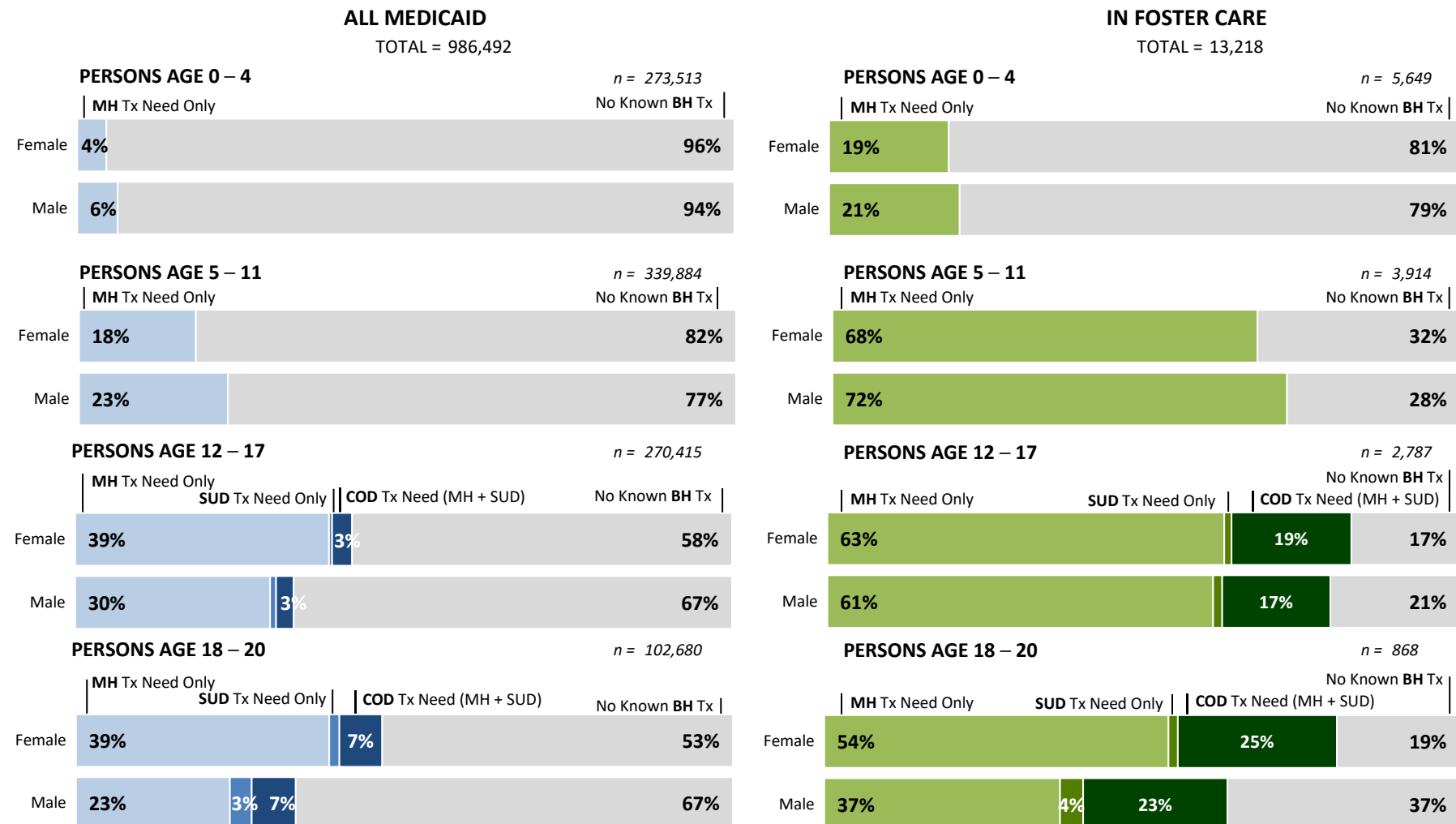
Behavioral Health Treatment Needs and Outcomes among Medicaid-Enrolled Children in Washington State

[Back to Contents](#)

November 2023

C. Behavioral Health Treatment Needs of Medicaid-Enrolled Children, by Gender and Age Group, SFY 2021

SFY 2021 COHORT • BEHAVIORAL HEALTH TREATMENT NEEDS BY GENDER (MEASURED IN CURRENT AND PREVIOUS SFY)



SOURCE & POPULATION: DSHS Integrated Client Databases. All children and youth with Medicaid coverage (includes SCHIP) and the subset of children and youth ever in foster care in SFY 2021.

NOTES: The analysis excludes 120 children with missing data on gender. MH Tx need only is children with MH Tx need but not with SUD Tx need, and SUD Tx need only is youth with SUD Tx need but not with MH Tx need.



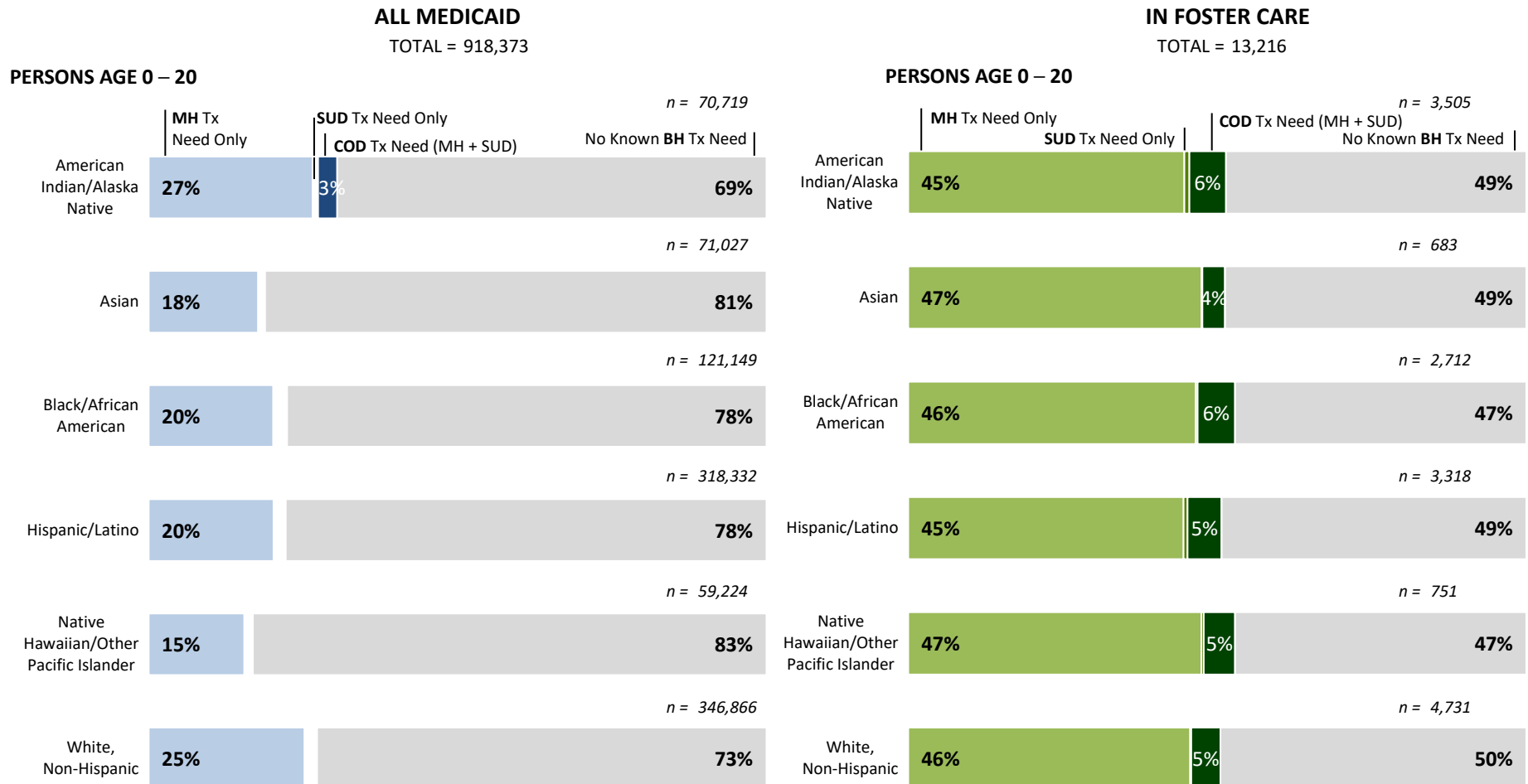
Behavioral Health Treatment Needs and Outcomes among Medicaid-Enrolled Children in Washington State

[Back to Contents](#)

November 2023

D. Behavioral Health Treatment Needs of Medicaid-Enrolled Children, by Race/Ethnicity, SFY 2021

SFY 2021 COHORT • BEHAVIORAL HEALTH TREATMENT NEEDS BY RACE/ETHNICITY (MEASURED IN CURRENT AND PREVIOUS SFY)



SOURCE & POPULATION: DSHS Integrated Client Databases. All children and youth with Medicaid coverage (includes SCHIP) and children and youth in foster care ever in SFY 2021.

NOTES: Race/ethnicity groups are not mutually exclusive except for White, Non-Hispanic. The analysis excludes 68,239 children with missing data on race/ethnicity. MH Tx need only is children with MH Tx need but not SUD Tx need, and SUD Tx need only is youth with SUD Tx need but not MH Tx need.



Behavioral Health Treatment Needs and Outcomes among Medicaid-Enrolled Children in Washington State

[Back to Contents](#)

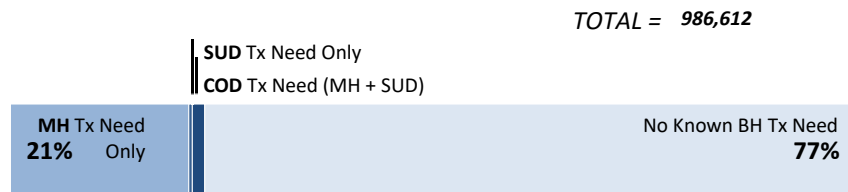
November 2023

E. Behavioral Health Treatment Needs of Medicaid-Enrolled Children, by Service Delivery System, SFY 2021

SFY 2021 COHORT • CHILDREN AGES 0 – 20 ENROLLED IN MEDICAID IN SFY 2021

TOTAL POPULATION WITH MEDICAID COVERAGE

All Age 0-20 on Medicaid (includes SCHIP)



BY TYPE OF COVERAGE (mutually exclusive)

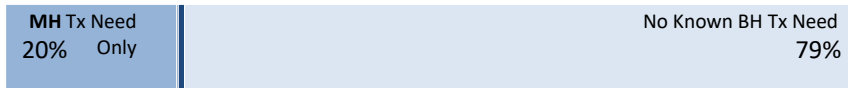
...with Disability-Related Medicaid Coverage

n = 24,121



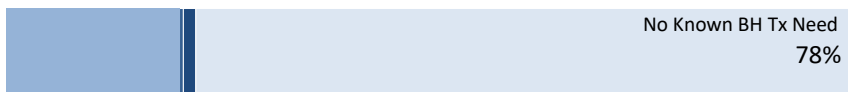
...with SCHIP Coverage

n = 73,277



...with Other Medicaid coverage (not disability or SCHIP)

n = 889,214



BY SERVICE UTILIZATION FOR TOTAL POPULATION WITH MEDICAID

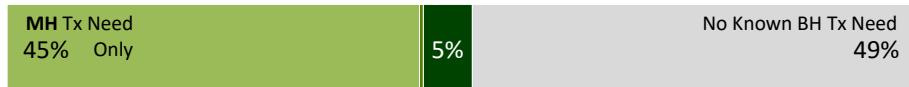
(not mutually exclusive)

...in DCYF Foster Care

SUD Tx Need Only

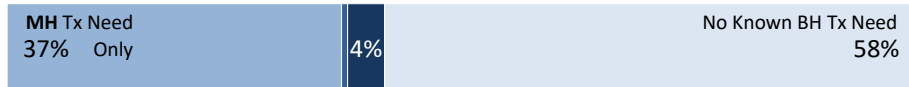
COD Tx Need (MH + SUD)

n = 13,220



...with any DCYF Child Welfare Service

n = 89,014



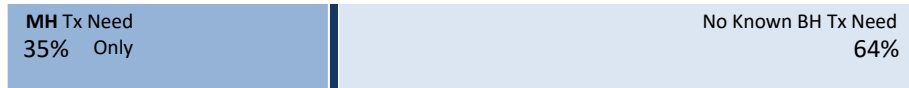
...with DCYF Juvenile Rehabilitation Services

n = 1,132



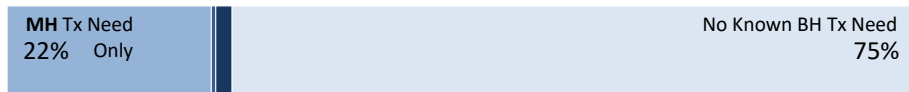
...with Developmental Disability (DSHS DDA) Services

n = 25,143



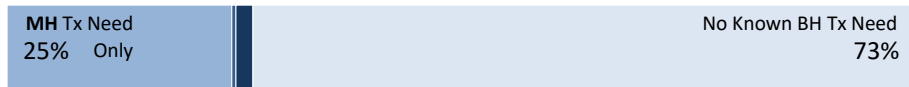
...with DSHS ESA Basic Food

n = 435,569



...with DSHS ESA TANF

n = 78,981



SOURCE & POPULATION: DSHS Integrated Client Databases. All children and youth age 0-20 with Medicaid coverage (includes SCHIP) in SFY 2021.

SUPPORTING TABLES | E. Behavioral Health Treatment Needs of Medicaid-Enrolled Children, by Service Delivery System, SFY 2021

DELIVERY SYSTEM	ALL MEDICAID SFY 2021																			
	All Children Age 0-20 on Medicaid /SCHIP		With Disability-Related Medicaid Coverage		With SCHIP Coverage		With Other Medicaid Coverage (not disability or SCHIP)		In DCYF Foster Care		With any DCYF Child Welfare Service		With DCYF Juvenile Rehabilitation Services		With DSHS DDA Services		With DSHS ESA Basic Food		With DSHS ESA TANF	
	N	%	N	%	N	%	N	%	N	%	N	%	N	%	N	%	N	%	N	%
TOTAL PERSONS AGE 0 – 20	986,612	100%	24,121	100%	73,277	100%	889,214	100%	13,220	100%	89,014	100%	1,132	100%	25,143	100%	435,569	100%	78,981	100%
MH Tx need (only or COD)	222,678	23%	12,730	53%	15,242	21%	194,706	22%	6,713	51%	36,409	41%	777	69%	9,153	36%	105,749	24%	21,023	27%
SUD Tx need (only or COD)	18,768	2%	757	3%	705	1%	17,306	2%	769	6%	4,245	5%	522	46%	279	1%	10,040	2%	1,835	2%
COD Tx need (MH, SUD)	14,538	1%	678	3%	545	1%	13,315	1%	713	5%	3,646	4%	431	38%	259	1%	7,877	2%	1,488	2%
No BH Tx need (MH, SUD)	759,704	77%	11,312	47%	57,875	79%	690,517	78%	6,451	49%	52,006	58%	264	23%	15,970	64%	327,657	75%	57,611	73%
PERSONS AGE 0 – 4	273,568	100%	2,308	100%	16,043	100%	255,217	100%	5,650	100%	24,422	100%	0	0%	14,180	100%	126,165	100%	27,183	100%
MH Tx need	14,493	5%	623	27%	713	4%	13,157	5%	1,124	20%	3,168	13%	0	0%	2,799	20%	8,183	6%	2,329	9%
No BH Tx need (MH, SUD)	259,075	95%	1,685	73%	15,330	96%	242,060	95%	4,526	80%	21,254	87%	0	0%	11,381	80%	117,982	94%	24,854	91%
PERSONS AGE 5 – 11	339,927	100%	8,601	100%	28,618	100%	302,708	100%	3,914	100%	32,843	100%	*	*	4,769	100%	160,741	100%	29,082	100%
MH Tx need	68,982	20%	4,297	50%	4,659	16%	60,026	20%	2,745	70%	14,228	43%	*	*	2,512	53%	36,626	23%	8,377	29%
No BH Tx need (MH, SUD)	270,945	80%	4,304	50%	23,959	84%	242,682	80%	1,169	30%	18,615	57%	0	0%	2,257	47%	124,115	77%	20,705	71%
PERSONS AGE 12 – 17	270,434	100%	8,241	100%	24,374	100%	237,819	100%	2,788	100%	25,866	100%	796	100%	3,713	100%	113,953	100%	20,228	100%
MH Tx need	99,943	37%	5,089	62%	8,453	35%	86,401	36%	2,232	80%	15,647	60%	573	72%	2,399	65%	44,894	39%	8,937	44%
SUD Tx need	9,574	4%	365	4%	530	2%	8,679	4%	540	19%	2,918	11%	378	47%	161	4%	5,035	4%	1,304	6%
COD Tx need (MH, SUD)	7,741	3%	333	4%	423	2%	6,985	3%	505	18%	2,596	10%	320	40%	150	4%	4,037	4%	1,070	5%
No BH Tx need (MH, SUD)	168,658	62%	3,120	38%	15,814	65%	149,724	63%	521	19%	9,897	38%	165	21%	1,303	35%	68,061	60%	11,057	55%
PERSONS AGE 18 – 20	102,683	100%	4,971	100%	4,242	100%	93,470	100%	868	100%	5,883	100%	333	100%	2,481	100%	34,710	100%	2,488	100%
MH Tx need	39,260	38%	2,721	55%	1,417	33%	35,122	38%	612	71%	3,366	57%	201	60%	1,443	58%	16,046	46%	1,380	55%
SUD Tx need	9,194	9%	392	8%	175	4%	8,627	9%	229	26%	1,327	23%	144	43%	118	5%	5,005	14%	531	21%
COD Tx need (MH, SUD)	6,797	7%	345	7%	122	3%	6,330	7%	208	24%	1,050	18%	111	33%	109	4%	3,840	11%	418	17%
No BH Tx need (MH, SUD)	61,026	59%	2,203	44%	2,772	65%	56,051	60%	235	27%	2,240	38%	99	30%	1,029	41%	17,499	50%	995	40%

SOURCE & POPULATION: DSHS Integrated Client Databases. All children age 0-20 with Medicaid coverage (includes SCHIP) in SFY 2021.

NOTES: The total population of children age 0-20 enrolled in Medicaid/SCHIP in SFY 2021 is broken into three mutually exclusive subgroups, by type of coverage in the first month of coverage in SFY 2021: (a) disability-related coverage; (b) SCHIP; (c) other Medicaid coverage (neither disability-related nor SCHIP). Rates of behavioral health needs are compared across subgroups. Need rates are also examined by non-mutually-exclusive subgroups determined by service utilization in SFY 2021 in four DSHS service types: (d) Juvenile Rehabilitation Services; (e) DDA Services; (f) Basic Food (food assistance through ESA); (g) TANF (Cash assistance through ESA) and two DCYF service types: (h) foster care (DCYF); (i) any child welfare service. *In order to protect the privacy of individuals, cells in this data product that represent 10 or fewer persons are not displayed. **Some additional cells with n>10 have been suppressed to ensure that cells with small numbers cannot be recalculated.



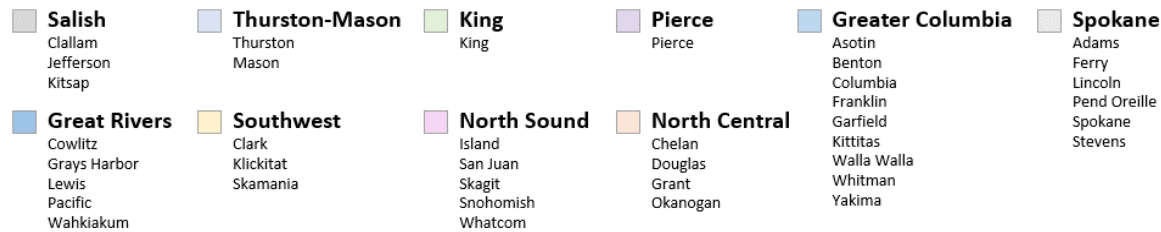
Behavioral Health Treatment Needs and Outcomes among Medicaid-Enrolled Children in Washington State

[Back to Contents](#)

November 2023

F. Behavioral Health Treatment Needs of Medicaid-Enrolled Children, by Region, SFY 2021

SFY 2021 COHORT • CHILDREN AGE 0 – 20 ENROLLED IN MEDICAID IN SFY 2021



REGION	ALL MEDICAID SFY 2021																			
	Great Rivers		Greater Columbia		King		North Central		North Sound		Pierce		Salish		Southwest		Spokane		Thurston-Mason	
	N	%	N	%	N	%	N	%	N	%	N	%	N	%	N	%	N	%	N	%
TOTAL PERSONS AGE 0 – 20	49,373	100%	152,646	100%	198,247	100%	56,932	100%	147,132	100%	124,531	100%	38,194	100%	74,052	100%	102,213	100%	43,059	100%
MH Tx need	14,405	29%	30,385	20%	36,858	19%	12,336	22%	34,752	24%	28,648	23%	10,296	27%	15,898	21%	27,423	27%	11,643	27%
SUD Tx need	1,376	3%	3,209	2%	2,848	1%	1,163	2%	2,599	2%	2,052	2%	915	2%	1,181	2%	2,396	2%	1,027	2%
Co-occurring Tx need (MH + SUD)	1,156	2%	2,224	1%	2,138	1%	859	2%	2,029	1%	1,605	1%	751	2%	913	1%	1,977	2%	884	2%
No known BH Tx need	34,748	70%	121,276	79%	160,679	81%	44,292	78%	111,810	76%	95,436	77%	27,734	73%	57,886	78%	74,371	73%	31,273	73%
PERSONS AGE 0 – 4	13,517	100%	41,223	100%	55,529	100%	15,133	100%	41,412	100%	35,332	100%	10,495	100%	20,126	100%	28,262	100%	12,454	100%
MH Tx need	930	7%	2,257	5%	2,389	4%	747	5%	2,372	6%	1,901	5%	600	6%	1,105	5%	1,632	6%	558	4%
No known BH Tx need	12,587	93%	38,966	95%	53,140	96%	14,386	95%	39,040	94%	33,431	95%	9,895	94%	19,021	95%	26,630	94%	11,896	96%
PERSONS AGE 5 – 11	17,059	100%	52,381	100%	67,756	100%	19,672	100%	50,941	100%	43,367	100%	13,047	100%	25,528	100%	35,152	100%	14,958	100%
MH Tx need	4,631	27%	9,419	18%	10,245	15%	3,766	19%	10,966	22%	9,057	21%	3,407	26%	5,131	20%	8,602	24%	3,746	25%
No known BH Tx need	12,428	73%	42,962	82%	57,511	85%	15,906	81%	39,975	78%	34,310	79%	9,640	74%	20,397	80%	26,550	76%	11,212	75%
PERSONS AGE 12 – 17	13,669	100%	42,954	100%	54,082	100%	16,261	100%	39,825	100%	33,352	100%	10,559	100%	20,696	100%	27,736	100%	11,257	100%
MH Tx need	6,454	47%	13,161	31%	17,330	32%	5,658	35%	15,361	39%	12,975	39%	4,443	42%	6,852	33%	12,328	44%	5,369	48%
SUD Tx need	833	6%	1,600	4%	1,333	2%	617	4%	1,269	3%	1,003	3%	481	5%	584	3%	1,285	5%	569	5%
Co-occurring Tx need (MH + SUD)	728	5%	1,152	3%	1,040	2%	484	3%	1,039	3%	816	2%	413	4%	468	2%	1,096	4%	505	4%
No known BH Tx need	7,110	52%	29,345	68%	36,459	67%	10,470	64%	24,234	61%	20,190	61%	6,048	57%	13,728	66%	15,219	55%	5,824	52%
PERSONS AGE 18 – 20	5,128	100%	16,088	100%	20,880	100%	5,866	100%	14,954	100%	12,480	100%	4,093	100%	7,702	100%	11,063	100%	4,390	100%
MH Tx need	2,390	47%	5,548	34%	6,894	33%	2,165	37%	6,053	40%	4,715	38%	1,846	45%	2,810	36%	4,861	44%	1,970	45%
SUD Tx need	543	11%	1,609	10%	1,515	7%	546	9%	1,330	9%	1,049	8%	434	11%	597	8%	1,111	10%	458	10%
Co-occurring Tx need (MH + SUD)	428	8%	1,072	7%	1,098	5%	375	6%	990	7%	789	6%	338	8%	445	6%	881	8%	379	9%
No known BH Tx need	2,623	51%	10,003	62%	13,569	65%	3,530	60%	8,561	57%	7,505	60%	2,151	53%	4,740	62%	5,972	54%	2,341	53%

SOURCE & POPULATION: DSHS Integrated Client Databases. All children and youth age 0-20 with Medicaid coverage (includes SCHIP) in SFY 2021.

NOTES: The total population of children and youth age 0-20 enrolled in Medicaid/SCHIP in SFY 2021 is broken into ten mutually exclusive regions, based on HCA's Integrated Managed Care (IMC) regions. This analysis excludes 233 children with missing data on county of residence.



Behavioral Health Treatment Needs and Outcomes among Medicaid-Enrolled Children in Washington State

[Back to Contents](#)

November 2023

G. Behavioral Health Treatment Needs of Medicaid-Enrolled Children, by County, SFY 2021

SFY 2021 COHORT • CHILDREN AGE 0 – 20 ENROLLED IN MEDICAID IN SFY 2021

COUNTY	ALL MEDICAID SFY 2021								
	TOTAL AGE 0-20	MH Tx Need		SUD Tx Need		Co-Occurring Tx Need (MH + SUD)		No Known BH Tx Need	
	N	N	%	N	%	N	%	N	%
STATEWIDE (All Regions)	986,612	222,678	23%	18,768	2%	14,538	1%	759,704	77%
Great Rivers	49,373	14,405	29%	1,376	3%	1,156	2%	34,748	70%
Cowlitz	18,767	5,584	30%	456	2%	382	2%	13,109	70%
Grays Harbor	12,675	3,325	26%	377	3%	319	3%	9,292	73%
Lewis	14,175	4,578	32%	402	3%	345	2%	9,540	67%
Pacific	3,178	747	24%	119	4%	92	3%	2,404	76%
Wahkiakum	578	171	30%	22	4%	18	3%	403	70%
Greater Columbia	152,646	30,385	20%	3,209	2%	2,224	1%	121,276	79%
Asotin	3,536	1,075	30%	151	4%	125	4%	2,435	69%
Benton	36,129	7,193	20%	699	2%	502	1%	28,739	80%
Columbia	539	140	26%	**	**	**	**	395	73%
Franklin	25,172	4,125	16%	426	2%	272	1%	20,893	83%
Garfield	330	81	25%	*	*	*	*	249	75%
Kittitas	4,778	1,209	25%	134	3%	104	2%	3,539	74%
Walla Walla	9,473	2,226	23%	241	3%	181	2%	7,187	76%
Whitman	3,868	936	24%	45	1%	38	1%	2,925	76%
Yakima	68,821	13,400	19%	1,489	2%	982	1%	54,914	80%
King	198,247	36,858	19%	2,848	1%	2,138	1%	160,679	81%
North Central	56,932	12,336	22%	1,163	2%	859	2%	44,292	78%
Chelan	14,078	3,263	23%	350	2%	265	2%	10,730	76%
Douglas	8,510	1,903	22%	191	2%	139	2%	6,555	77%
Grant	25,355	5,529	22%	455	2%	338	1%	19,709	78%
Okanogan	8,989	1,641	18%	167	2%	117	1%	7,298	81%
North Sound	147,132	34,752	24%	2,599	2%	2,029	1%	111,810	76%
Island	7,614	1,850	24%	136	2%	106	1%	5,734	75%
San Juan	1,607	325	20%	24	1%	16	1%	1,274	79%
Skagit	19,731	6,713	34%	396	2%	327	2%	12,949	66%
Snohomish	90,549	19,025	21%	1,510	2%	1,145	1%	71,159	79%
Whatcom	27,631	6,839	25%	533	2%	435	2%	20,694	75%

Pierce	124,531	28,648	23%	2,052	2%	1,605	1%	95,436	77%
Salish	38,194	10,296	27%	915	2%	751	2%	27,734	73%
Clallam	9,756	2,421	25%	306	3%	249	3%	7,278	75%
Jefferson	2,937	704	24%	89	3%	68	2%	2,212	75%
Kitsap	25,501	7,171	28%	520	2%	434	2%	18,244	72%
Southwest	74,052	15,898	21%	1,181	2%	913	1%	57,886	78%
Clark	69,410	14,861	21%	1,096	2%	841	1%	54,294	78%
Klickitat	3,258	703	22%	65	2%	56	2%	2,546	78%
Skamania	1,384	334	24%	20	1%	16	1%	1,046	76%
Spokane	102,213	27,423	27%	2,396	2%	1,977	2%	74,371	73%
Adams	6,653	1,370	21%	125	2%	78	1%	5,236	79%
Ferry	1,265	240	19%	24	2%	20	2%	1,021	81%
Lincoln	1,606	379	24%	26	2%	23	1%	1,224	76%
Pend Oreille	2,343	547	23%	67	3%	55	2%	1,784	76%
Spokane	82,432	23,155	28%	1,979	2%	1,667	2%	58,965	72%
Stevens	7,914	1,732	22%	175	2%	134	2%	6,141	78%
Thurston-Mason	43,059	11,643	27%	1,027	2%	884	2%	31,273	73%
Mason	9,980	2,650	27%	189	2%	161	2%	7,302	73%
Thurston	33,079	8,993	27%	838	3%	723	2%	23,971	72%

SOURCE & POPULATION: DSHS Integrated Client Databases. All children and youth age 0-20 with Medicaid coverage (includes SCHIP) in SFY 2021.

NOTES: The total population of children age 0-20 enrolled in Medicaid/SCHIP in SFY 2021 is broken into ten mutually exclusive regions, based on Washington State's IMC regions. The analysis excludes 233 children with missing data on county of residence. *In order to protect the privacy of individuals, cells in this data product that represent 10 or fewer persons are not displayed. **Some additional cells with n>10 have been suppressed to ensure that cells with small numbers cannot be recalculated.



Behavioral Health Treatment Needs and Outcomes among Medicaid-Enrolled Children in Washington State

[Back to Contents](#)

November 2023

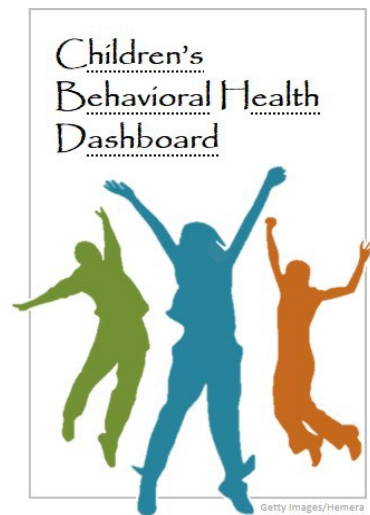
H. Behavioral Health Treatment Needs of Medicaid-Enrolled Children, by Abuse and Neglect History, SFY 2021

SFY 2021 COHORT • BEHAVIORAL HEALTH TREATMENT NEEDS (MEASURED IN CURRENT AND PREVIOUS SFY)

ABUSE/NEGLECT HISTORY	ALL MEDICAID				IN FOSTER CARE									
	Ever Abuse/Neglect		No Known Abuse/Neglect		Ever Abuse/Neglect		Ever Neglect		Ever Physical Abuse		Ever Sexual Abuse		Abuse/Neglect History Unknown	
	N	%	N	%	N	%	N	%	N	%	N	%	N	%
POPULATION PROPORTIONS (row %)	221,136	22%	765,476	78%	11,097	84%	10,408	79%	5,082	38%	1,602	12%	2,123	16%
PROPORTIONS WITH BH TX NEEDS (col. %)														
TOTAL PERSONS AGE 0 – 20	221,136	100%	765,476	100%	11,097	100%	10,408	100%	5,082	100%	1,602	100%	2,123	100%
MH Tx need	89,681	41%	132,997	17%	6,371	57%	6,072	58%	3,442	68%	1,233	77%	342	16%
SUD Tx need	10,878	5%	7,890	1%	743	7%	717	7%	511	10%	203	13%	26	1%
Co-occurring Tx need (MH + SUD)	8,844	4%	5,694	1%	692	6%	669	6%	478	9%	189	12%	21	1%
No known BH Tx need	129,421	59%	630,283	82%	4,675	42%	4,288	41%	1,607	32%	355	22%	1,776	84%
PERSONS AGE 0 – 4	27,453	100%	246,115	100%	3,828	100%	3,523	100%	1,233	100%	182	100%	1,822	100%
MH Tx need	3,757	14%	10,736	4%	928	24%	871	25%	366	30%	76	42%	196	11%
No known BH Tx need	23,696	86%	235,379	96%	2,900	76%	2,652	75%	867	70%	106	58%	1,626	89%
PERSONS AGE 5 – 11	79,025	100%	260,902	100%	3,761	100%	3,581	100%	1,809	100%	545	100%	153	100%
MH Tx need	28,269	36%	40,713	16%	2,677	71%	2,574	72%	1,397	77%	423	78%	68	44%
No known BH Tx need	50,756	64%	220,219	84%	1,084	29%	1,007	28%	412	23%	122	22%	85	56%
PERSONS AGE 12 – 17	83,106	100%	187,328	100%	2,684	100%	2,523	100%	1,531	100%	634	100%	104	100%
MH Tx need	42,092	51%	57,851	31%	2,180	81%	2,065	82%	1,306	85%	546	86%	52	50%
SUD Tx need	6,000	7%	3,574	2%	527	20%	507	20%	354	23%	142	22%	13	13%
Co-occurring Tx need (MH + SUD)	5,102	6%	2,639	1%	**	**	475	19%	336	22%	132	21%	**	**
No known BH Tx need	40,116	48%	128,542	69%	470	18%	426	17%	207	14%	78	12%	51	49%
PERSONS AGE 18 – 20	31,552	100%	71,131	100%	824	100%	781	100%	509	100%	241	100%	44	100%
MH Tx need	15,563	49%	23,697	33%	586	71%	562	72%	373	73%	188	78%	26	59%
SUD Tx need	4,878	15%	4,316	6%	216	26%	210	27%	157	31%	61	25%	13	30%
Co-occurring Tx need (MH + SUD)	3,742	12%	3,055	4%	**	**	194	25%	142	28%	57	24%	*	*
No known BH Tx need	14,853	47%	46,173	65%	221	27%	203	26%	121	24%	49	20%	14	32%

SOURCE & POPULATION: DSHS Integrated Client Databases. All children and youth with Medicaid coverage (includes SCHIP) and the subset of children and youth ever in foster care in SFY 2021. Maltreatment data comes from Child Protective Services (CPS) intake and investigation information stored in DCYF's FamLink data system.

NOTES: Abuse and neglect categories are not mutually exclusive. *In order to protect the privacy of individuals, cells in this data product that represent 10 or fewer persons are not displayed. **Some additional cells with n>10 have been suppressed to ensure that cells with small numbers cannot be recalculated. Maltreatment measures reflect screened in abuse or neglect allegations to Child Protective Services.



SECTION 2

Outcome Measures

Behavioral Health Treatment Needs and Outcomes among Medicaid-Enrolled Children in Washington State

[Back to Contents](#)

November 2023

MEASURE 1

Treatment Rate for Children with MH Tx Need

INDICATOR

Proportion of children with mental health treatment needs who receive mental health treatment services.

ALL MEDICAID:

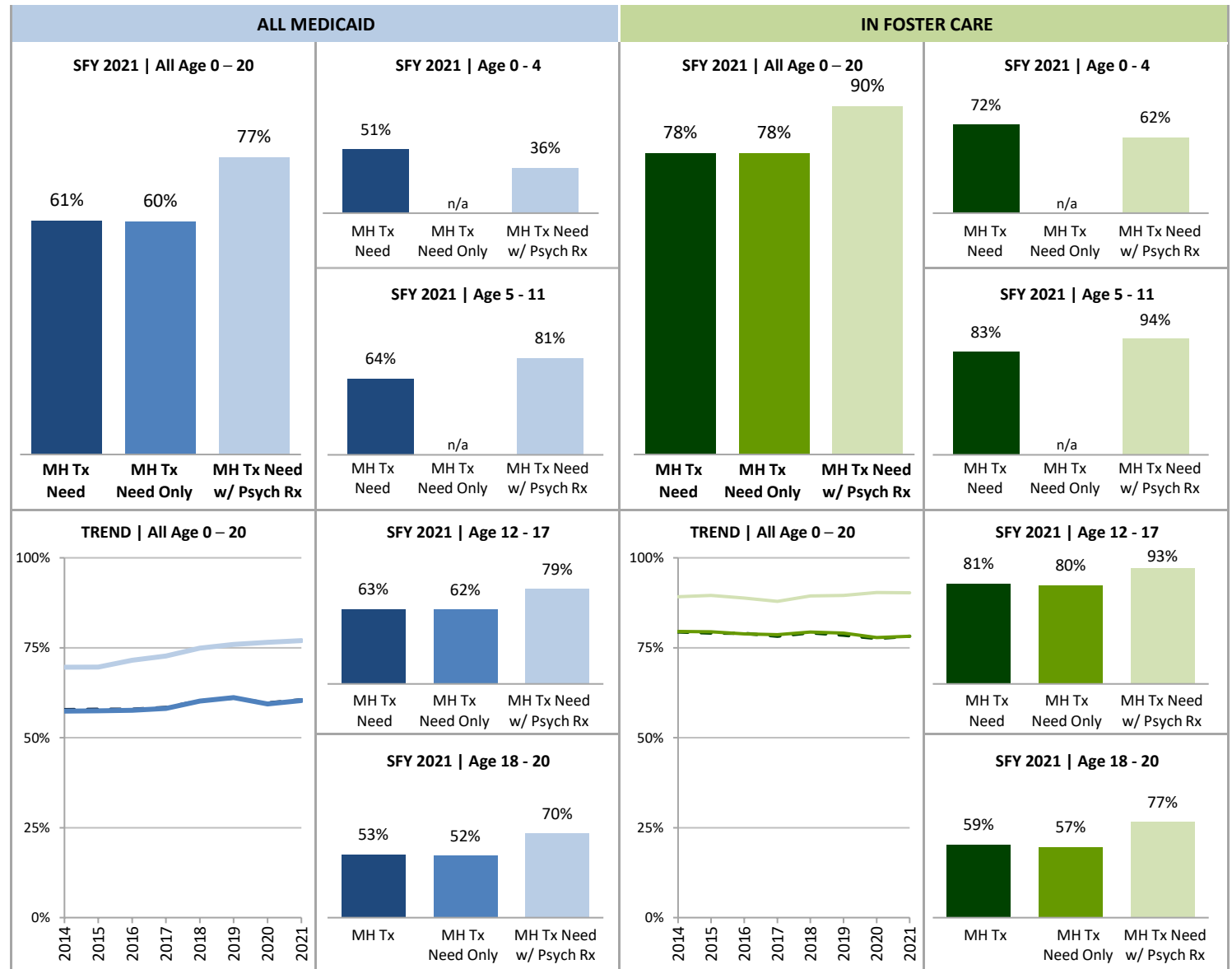
- MH Tx Need
- MH Tx Need Only
- MH Tx Need w/ Psych Rx

IN FOSTER CARE:

- MH Tx Need
- MH Tx Need Only
- MH Tx Need w/ Psych Rx

SOURCE & POPULATION

DSHS Integrated Client Databases. All children and youth with Medicaid coverage (includes SCHIP) and the subset of children and youth ever in foster care in SFY.



SUPPORTING TABLES | 1 Treatment Rate for Children with Mental Health Treatment Need

STATE FISCAL YEAR	ALL MEDICAID								IN FOSTER CARE							
	2014	2015	2016	2017	2018	2019	2020	2021	2014	2015	2016	2017	2018	2019	2020	2021
TOTAL PERSONS AGE 0 – 20																
MH Tx need, percent	58%	58%	58%	58%	60%	61%	60%	61%	79%	79%	79%	78%	79%	78%	78%	78%
Persons receiving MH Tx	86,982	95,692	104,209	110,867	122,698	133,434	130,472	134,878	6,153	6,212	6,095	6,198	6,462	6,474	5,908	5,248
Total number of persons	150,467	165,280	179,957	189,743	203,724	218,680	218,675	222,678	7,750	7,858	7,716	7,927	8,162	8,251	7,616	6,713
MH Tx need only (no COD), percent	57%	57%	58%	58%	60%	61%	59%	60%	80%	79%	79%	79%	79%	79%	78%	78%
Persons receiving MH Tx	78,769	86,348	94,132	100,804	112,467	123,130	120,420	125,570	5,433	5,501	5,382	5,569	5,835	5,837	5,298	4,691
Total number of persons	137,250	150,230	163,425	173,333	186,924	201,351	202,697	208,140	6,831	6,924	6,823	7,079	7,349	7,384	6,806	6,000
MH Tx need with Psych Rx, percent	70%	70%	72%	73%	75%	76%	77%	77%	89%	90%	89%	88%	89%	90%	90%	90%
Persons receiving MH Tx	42,631	46,924	51,609	53,290	56,252	58,087	58,077	60,129	2,286	2,255	2,187	2,194	2,231	2,290	2,287	2,103
Total number of persons	61,253	67,401	72,137	73,262	75,107	76,479	75,890	78,100	2,563	2,518	2,462	2,496	2,496	2,557	2,531	2,330
PERSONS AGE 0 – 4																
MH Tx need, percent	45%	44%	45%	46%	50%	50%	50%	51%	68%	69%	72%	70%	72%	72%	71%	72%
Persons receiving MH Tx	5,906	5,921	6,230	6,392	7,523	7,891	7,383	7,436	954	935	937	943	1,052	1,026	907	810
Total number of persons	13,111	13,397	13,902	13,869	15,127	15,700	14,811	14,493	1,407	1,364	1,298	1,342	1,459	1,431	1,274	1,124
MH Tx need with Psych Rx, percent	25%	25%	28%	28%	31%	34%	35%	36%	46%	49%	61%	46%	51%	62%	63%	62%
Persons receiving MH Tx	559	471	531	477	527	548	543	505	61	48	62	41	53	58	56	53
Total number of persons	2,194	1,914	1,875	1,695	1,726	1,626	1,539	1,396	134	98	101	90	103	93	89	86
PERSONS AGE 5 – 11																
MH Tx need, percent	65%	65%	65%	66%	67%	67%	65%	64%	85%	85%	84%	85%	85%	85%	83%	83%
Persons receiving MH Tx	37,099	39,023	41,712	44,113	47,702	49,400	46,426	43,915	2,855	2,934	2,911	3,019	3,067	3,053	2,721	2,277
Total number of persons	57,141	59,997	63,898	67,009	71,312	74,277	71,306	68,982	3,341	3,448	3,454	3,561	3,617	3,604	3,272	2,745
MH Tx need with Psych Rx, percent	78%	78%	80%	80%	82%	82%	82%	81%	95%	93%	93%	95%	94%	93%	94%	94%
Persons receiving MH Tx	17,577	17,940	18,877	19,085	19,658	19,638	19,055	17,601	935	919	911	958	936	922	935	818
Total number of persons	22,459	23,048	23,696	23,838	23,992	23,932	23,178	21,745	984	986	979	1,011	995	988	992	870
PERSONS AGE 12 – 17																
MH Tx need, percent	59%	59%	60%	60%	62%	64%	61%	63%	80%	79%	79%	77%	79%	78%	78%	81%
Persons receiving MH Tx	36,134	39,689	43,214	45,840	51,340	59,045	58,765	62,711	2,207	2,183	2,046	2,010	2,095	2,113	1,967	1,802
Total number of persons	61,670	66,735	72,578	76,766	83,298	92,958	95,909	99,943	2,772	2,750	2,606	2,604	2,642	2,726	2,524	2,232
MH Tx need only (no COD), percent	57%	58%	58%	59%	61%	63%	60%	62%	79%	80%	77%	77%	79%	78%	77%	80%
Persons receiving MH Tx	30,109	33,280	36,669	39,584	44,944	52,593	52,449	57,394	1,521	1,519	1,397	1,452	1,543	1,577	1,461	1,374
Total number of persons	52,647	57,351	62,836	67,454	73,600	82,929	86,707	92,202	1,915	1,907	1,814	1,890	1,961	2,029	1,895	1,727
MH Tx need with Psych Rx, percent	70%	71%	73%	74%	76%	78%	78%	79%	90%	91%	90%	89%	91%	90%	91%	93%
Persons receiving MH Tx	19,693	21,459	23,609	24,409	25,834	27,191	27,338	29,164	1,197	1,173	1,067	1,049	1,090	1,117	1,091	1,007
Total number of persons	27,999	30,117	32,411	32,877	33,790	34,811	34,907	36,687	1,330	1,285	1,189	1,180	1,196	1,246	1,196	1,082

PERSONS AGE 18 – 20																
MH Tx need, percent	42%	44%	44%	45%	47%	48%	49%	53%	60%	54%	56%	54%	56%	58%	57%	59%
Persons receiving MH Tx	7,843	11,059	13,053	14,522	16,133	17,098	17,898	20,816	137	160	201	226	248	282	313	359
Total number of persons	18,545	25,151	29,579	32,099	33,987	35,745	36,649	39,260	230	296	358	420	444	490	546	612
MH Tx need only (no COD), percent	39%	42%	42%	43%	46%	47%	47%	52%	61%	55%	53%	54%	55%	57%	57%	57%
Persons receiving MH Tx	5,655	8,124	9,521	10,715	12,298	13,246	14,162	16,825	103	113	137	155	173	181	209	230
Total number of persons	14,351	19,485	22,789	25,001	26,885	28,445	29,873	32,463	168	205	257	286	312	320	365	404
MH Tx need with Psych Rx, percent	56%	57%	61%	63%	66%	66%	68%	70%	81%	77%	76%	68%	75%	84%	81%	77%
Persons receiving MH Tx	4,802	7,054	8,592	9,319	10,233	10,710	11,141	12,859	93	115	147	146	152	193	205	225
Total number of persons	8,601	12,322	14,155	14,852	15,599	16,110	16,266	18,272	115	149	193	215	202	230	254	292

NOTES: Denominator for percentages is number of persons with indications of MH Tx need in the current or past SFY. Numerator is number of persons receiving outpatient mental health services in the current SFY. Outpatient mental health services include most modalities of outpatient mental health services delivered through DBHR (excludes, for example, case management), as well as Behavioral Rehabilitation Services from DCYF and outpatient mental health services delivered through HCA or tribal authorities. Note that tabulation of mental health services received in this measure reflects a one-year window, whereas the mental health services component of indication of MH TX need (see Table B in Section 1) reflects a two-year window. The MH Tx need only (no SUD) group is shown only for age 12-20, the earliest age at which SUD Tx need is measured. See next page for youth 12-20 with SUD and/or COD. MH Tx need with Psych Rx (psychotropic prescription) represents children with any MH Tx need (alone or with combination with SUD Tx need) who also filled a psychotropic prescription in the two-year need window.

Behavioral Health Treatment Needs and Outcomes among Medicaid-Enrolled Children in Washington State

[Back to Contents](#)

November 2023

MEASURE 2

Treatment Rate for Youth with SUD and COD Tx Needs

INDICATOR

Proportion of youth age 12-20 with SUD and COD treatment needs who receive appropriate behavioral health treatment services.

ALL MEDICAID:

- SUD Need, SUD Tx
- SUD Need Only, SUD Tx
- COD Need, SUD Tx
- - COD Need, MH Tx
- COD Need, MH+SUD Tx

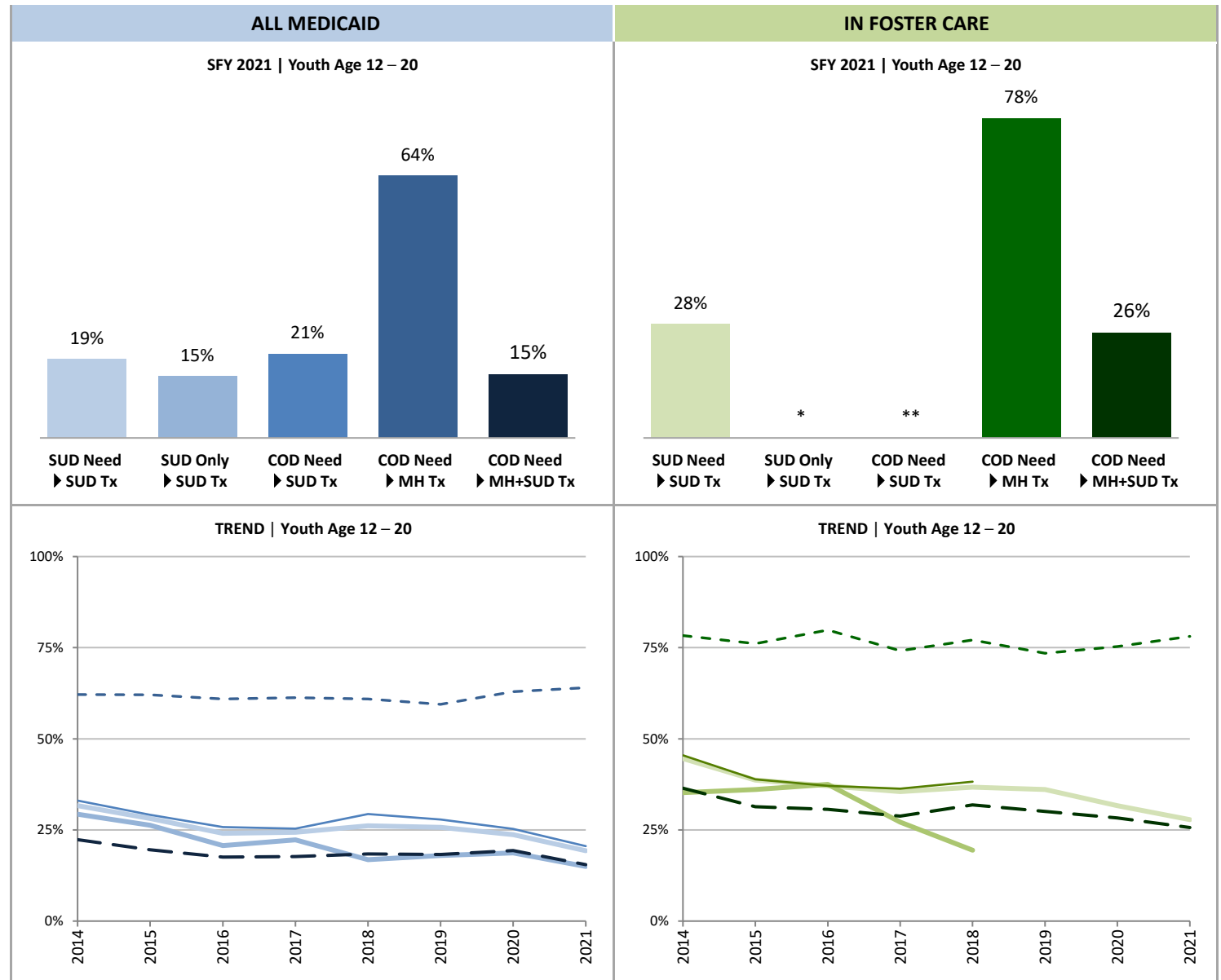
IN FOSTER CARE:

- SUD Need, SUD Tx
- SUD Need Only, SUD Tx
- COD Need, SUD Tx
- - COD Need, MH Tx
- COD Need, MH+SUD Tx

*NOTE: The "TREND | Youth Age 12-20" line chart for Foster Care youth (right), suppresses data in some years due to small numbers.

SOURCE & POPULATION

DSHS Integrated Client Databases.
Children and youth age 12-20 with Medicaid coverage (includes SCHIP) and the subset of children and youth ever in foster care in SFY.



SUPPORTING TABLES | 2 Treatment Rate for Youth with SUD and COD Treatment Needs

STATE FISCAL YEAR	ALL MEDICAID								IN FOSTER CARE							
	2014	2015	2016	2017	2018	2019	2020	2021	2014	2015	2016	2017	2018	2019	2020	2021
PERSONS AGE 12 – 20																
SUD Tx need: SUD Tx percent	32%	28%	24%	24%	26%	26%	24%	19%	45%	39%	37%	36%	37%	36%	32%	28%
Persons receiving SUD Tx	6,650	6,578	6,017	5,931	5,913	5,684	4,952	3,623	449	389	364	330	325	333	275	214
Persons with SUD Tx need	20,997	23,389	25,005	24,352	22,633	22,101	20,881	18,768	1,007	1,006	981	929	885	922	868	769
SUD Tx need only (no COD): SUD Tx	29%	26%	21%	22%	17%	18%	19%	15%	35%	36%	38%	27%	19%	*	29%	*
Persons receiving SUD Tx	2,281	2,195	1,755	1,770	984	860	917	634	31	26	33	22	14	*	17	*
Persons with SUD Tx need only	7,780	8,339	8,473	7,942	5,833	4,772	4,903	4,230	88	72	88	81	72	55	58	56
COD Tx need: SUD Tx percent	33%	29%	26%	25%	29%	28%	25%	21%	45%	39%	37%	36%	38%	**	32%	**
Persons receiving SUD Tx	4,369	4,383	4,262	4,161	4,929	4,824	4,035	2,989	418	363	331	308	311	**	258	**
Persons with COD Tx needs	13,217	15,050	16,532	16,410	16,800	17,329	15,978	14,538	919	934	893	848	813	867	810	713
COD Tx need: MH Tx percent	62%	62%	61%	61%	61%	59%	63%	64%	78%	76%	80%	74%	77%	73%	75%	78%
Persons receiving MH Tx	8,213	9,344	10,077	10,063	10,231	10,304	10,052	9,308	720	711	713	629	627	637	610	557
Persons with COD Tx needs	13,217	15,050	16,532	16,410	16,800	17,329	15,978	14,538	919	934	893	848	813	867	810	713
COD Tx need: MH+SUD Tx percent	22%	20%	18%	18%	18%	18%	19%	15%	36%	31%	31%	29%	32%	30%	28%	26%
Persons receiving both MH+SUD Tx	2,952	2,944	2,906	2,901	3,098	3,164	3,090	2,251	335	293	274	244	259	261	229	183
Persons with COD Tx needs	13,217	15,050	16,532	16,410	16,800	17,329	15,978	14,538	919	934	893	848	813	867	810	713
PERSONS AGE 12 – 17																
SUD Tx need: SUD Tx percent	37%	34%	29%	30%	32%	30%	26%	20%	47%	41%	40%	39%	41%	41%	35%	30%
Persons receiving SUD Tx	5,073	4,677	4,155	3,984	3,996	3,690	3,038	1,904	435	367	345	303	294	299	230	162
Persons with SUD Tx need	13,826	13,810	14,122	13,327	12,462	12,245	11,564	9,574	934	896	863	774	722	727	666	540
SUD Tx need only (no COD): SUD Tx	36%	34%	26%	29%	22%	23%	23%	15%	36%	45%	44%	33%	*	*	41%	*
Persons receiving SUD Tx	1,708	1,488	1,157	1,176	605	509	541	277	28	24	31	20	*	*	15	*
Persons with SUD Tx need only	4,803	4,426	4,380	4,015	2,764	2,216	2,362	1,833	77	53	71	60	41	30	37	35
COD Tx need: SUD Tx percent	37%	34%	31%	30%	35%	32%	27%	21%	47%	41%	40%	40%	**	**	34%	**
Persons receiving SUD Tx	3,365	3,189	2,998	2,808	3,391	3,181	2,497	1,627	407	343	314	283	**	**	215	**
Persons with COD Tx needs	9,023	9,384	9,742	9,312	9,698	10,029	9,202	7,741	857	843	792	714	681	697	629	505
COD Tx need: MH Tx percent	67%	68%	67%	67%	66%	64%	69%	69%	80%	79%	82%	78%	81%	77%	80%	85%
Persons receiving MH Tx	6,025	6,409	6,545	6,256	6,396	6,452	6,316	5,317	686	664	649	558	552	536	506	428
Persons with COD Tx needs	9,023	9,384	9,742	9,312	9,698	10,029	9,202	7,741	857	843	792	714	681	697	629	505
COD Tx need: MH+SUD Tx percent	26%	24%	23%	22%	23%	22%	22%	17%	38%	34%	33%	32%	36%	34%	31%	29%
Persons receiving both MH+SUD Tx	2,352	2,257	2,200	2,052	2,208	2,174	2,040	1,313	327	283	264	226	242	239	195	144
Persons with COD Tx needs	9,023	9,384	9,742	9,312	9,698	10,029	9,202	7,741	857	843	792	714	681	697	629	505

PERSONS AGE 18 – 20																
SUD Tx need: SUD Tx percent	22%	20%	17%	18%	19%	20%	21%	19%	19%	20%	16%	17%	19%	17%	22%	23%
Persons receiving SUD Tx	1,577	1,901	1,862	1,947	1,917	1,994	1,914	1,719	14	22	19	27	31	34	45	52
Persons with SUD Tx need	7,171	9,579	10,883	11,025	10,171	9,856	9,317	9,194	73	110	118	155	163	195	202	229
SUD Tx need only (no COD): SUD Tx	19%	18%	15%	15%	12%	14%	15%	15%	*	*	*	*	*	*	*	*
Persons receiving SUD Tx	573	707	598	594	379	351	376	357	*	*	*	*	*	*	*	*
Persons with SUD Tx need only	2,977	3,913	4,093	3,927	3,069	2,556	2,541	2,397	11	19	17	21	31	25	21	21
COD Tx need: SUD Tx percent	24%	21%	19%	19%	22%	23%	23%	20%	**	**	**	**	**	**	**	**
Persons receiving SUD Tx	1,004	1,194	1,264	1,353	1,538	1,643	1,538	1,362	**	**	**	**	**	**	**	**
Persons with COD Tx needs	4,194	5,666	6,790	7,098	7,102	7,300	6,776	6,797	62	91	101	134	132	170	181	208
COD Tx need: MH Tx percent	52%	52%	52%	54%	54%	53%	55%	59%	55%	52%	63%	53%	57%	59%	57%	62%
Persons receiving MH Tx	2,188	2,935	3,532	3,807	3,835	3,852	3,736	3,991	34	47	64	71	75	101	104	129
Persons with COD Tx needs	4,194	5,666	6,790	7,098	7,102	7,300	6,776	6,797	62	91	101	134	132	170	181	208
COD Tx need: MH+SUD Tx percent	14%	12%	10%	12%	13%	14%	15%	14%	*	*	*	13%	13%	13%	19%	19%
Persons receiving both MH+SUD Tx	600	687	706	849	890	990	1,050	938	*	*	*	18	17	22	34	39
Persons with COD Tx needs	4,194	5,666	6,790	7,098	7,102	7,300	6,776	6,797	62	91	101	134	132	170	181	208

NOTES: *In order to protect the privacy of individuals, cells in this data product that represent 10 or fewer persons are not displayed. **Some additional cells with n>10 have been suppressed to ensure that cells with small numbers cannot be recalculated.

Behavioral Health Treatment Needs and Outcomes among Medicaid-Enrolled Children in Washington State

[Back to Contents](#)

November 2023

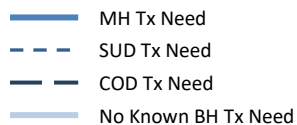
MEASURE 3

Mental Health Crisis Services¹

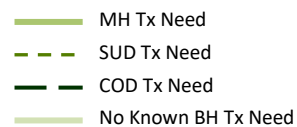
INDICATOR

Proportion of children who have received at least one mental health crisis service in SFY.

ALL MEDICAID:

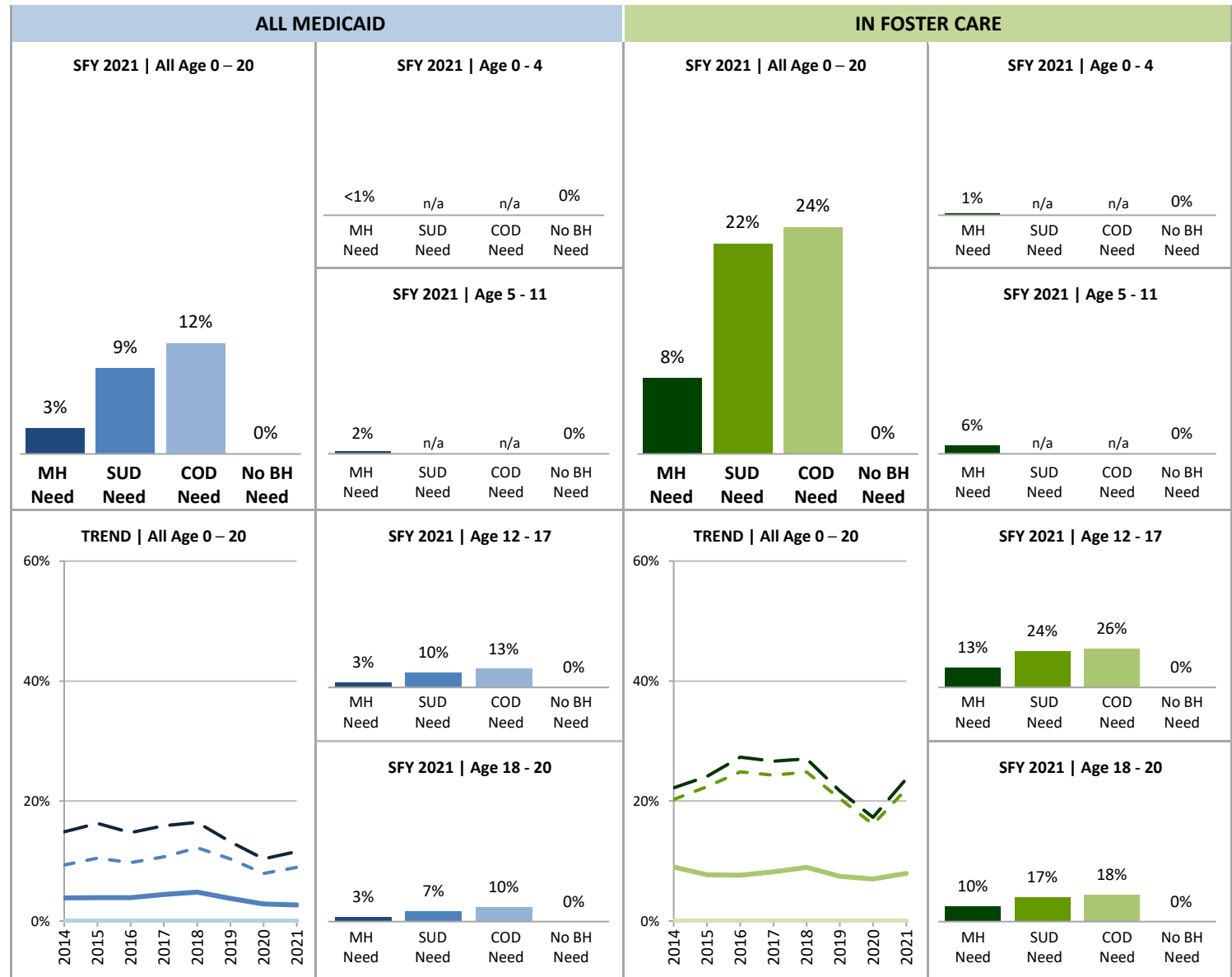


IN FOSTER CARE:



SOURCE & POPULATION

DSHS Integrated Client Databases. All children and youth with Medicaid coverage (includes SCHIP) and the subset of children and youth ever in foster care in SFY.



SUPPORTING TABLES | 3 Mental Health Crisis Services

STATE FISCAL YEAR	ALL MEDICAID								IN FOSTER CARE							
	2014	2015	2016	2017	2018	2019	2020	2021	2014	2015	2016	2017	2018	2019	2020	2021
TOTAL PERSONS AGE 0-20																
Total persons, percent	1%	1%	1%	1%	1%	1%	1%	1%	5%	4%	4%	4%	5%	4%	4%	4%
Number of persons with MH crisis	5,829	6,451	6,982	8,365	9,829	8,242	6,202	5,966	698	608	590	649	731	617	534	533
Total number of persons	897,203	937,229	976,919	997,722	1,004,194	992,755	980,961	986,612	15,265	15,471	15,565	16,125	16,151	15,981	14,826	13,220
MH Tx need, percent	4%	4%	4%	4%	5%	4%	3%	3%	9%	8%	8%	8%	9%	7%	7%	8%
Number of persons with MH crisis	5,829	6,451	6,982	8,365	9,829	8,242	6,202	5,966	698	608	590	649	731	617	534	533
Total number of persons	150,467	165,280	179,957	189,743	203,724	218,680	218,675	222,678	7,750	7,858	7,716	7,927	8,162	8,251	7,616	6,713
SUD Tx need, percent	9%	10%	10%	11%	12%	10%	8%	9%	20%	22%	25%	24%	25%	20%	16%	22%
Number of persons with MH crisis	1,965	2,450	2,435	2,605	2,764	2,290	1,657	1,682	204	225	244	226	220	188	140	169
Total number of persons	20,997	23,389	25,005	24,352	22,633	22,101	20,881	18,768	1,007	1,006	981	929	885	922	868	769
Co-occurring Tx need, percent	15%	16%	15%	16%	16%	13%	10%	12%	22%	24%	27%	27%	27%	22%	17%	24%
Number of persons with MH crisis	1,965	2,450	2,435	2,605	2,764	2,290	1,657	1,682	204	225	244	226	220	188	140	169
Total number of persons	13,217	15,050	16,532	16,410	16,800	17,329	15,978	14,538	919	934	893	848	813	867	810	713
No known BH Tx need, percent	0%	0%	0%	0%	0%	0%	0%	0%	0%	0%	0%	0%	0%	0%	0%	0%
Number of persons with MH crisis	0	0	0	0	0	0	0	0	0	0	0	0	0	0	0	0
Total number of persons	738,956	763,610	788,489	800,037	794,637	769,303	757,383	759,704	7,427	7,541	7,761	8,117	7,917	7,675	7,152	6,451
PERSONS AGE 0 – 4																
MH Tx need, percent	1%	<1%	<1%	<1%	<1%	<1%	<1%	<1%	6%	2%	*	1%	1%	*	1%	1%
Number of persons with MH crisis	116	54	26	46	59	40	45	44	82	22	*	12	19	*	18	13
Total number of persons	13,111	13,397	13,902	13,869	15,127	15,700	14,811	14,493	1,407	1,364	1,298	1,342	1,459	1,431	1,274	1,124
No known BH Tx need, percent	0%	0%	0%	0%	0%	0%	0%	0%	0%	0%	0%	0%	0%	0%	0%	0%
Number of persons with MH crisis	0	0	0	0	0	0	0	0	0	0	0	0	0	0	0	0
Total number of persons	272,722	274,345	281,768	284,345	281,292	273,308	265,255	259,075	5,432	5,437	5,613	5,869	5,731	5,481	5,047	4,526
PERSONS AGE 5 – 11																
MH Tx need, percent	2%	2%	2%	2%	3%	2%	2%	2%	5%	4%	**	5%	6%	**	5%	6%
Number of persons with MH crisis	968	983	1,077	1,378	1,783	1,556	1,300	1,178	174	150	**	169	211	**	174	159
Total number of persons	57,141	59,997	63,898	67,009	71,312	74,277	71,306	68,982	3,341	3,448	3,454	3,561	3,617	3,604	3,272	2,745
No known BH Tx need, percent	0%	0%	0%	0%	0%	0%	0%	0%	0%	0%	0%	0%	0%	0%	0%	0%
Number of persons with MH crisis	0	0	0	0	0	0	0	0	0	0	0	0	0	0	0	0
Total number of persons	259,166	266,883	277,229	282,900	282,166	274,576	271,268	270,945	1,400	1,467	1,482	1,543	1,452	1,448	1,333	1,169
PERSONS AGE 12 – 17																
MH Tx need, percent	6%	6%	6%	7%	7%	5%	4%	3%	15%	15%	15%	16%	17%	14%	12%	13%
Number of persons with MH crisis	3,561	4,011	4,321	5,055	5,785	4,791	3,615	3,456	424	409	399	427	448	376	308	298
Total number of persons	61,670	66,735	72,578	76,766	83,298	92,958	95,909	99,943	2,772	2,750	2,606	2,604	2,642	2,726	2,524	2,232
SUD Tx need, percent	10%	12%	11%	12%	14%	11%	9%	10%	**	23%	25%	26%	27%	22%	19%	24%
Number of persons with MH crisis	1,354	1,630	1,540	1,575	1,690	1,338	1,053	998	**	209	216	201	192	158	125	131
Total number of persons	13,826	13,810	14,122	13,327	12,462	12,245	11,564	9,574	934	896	863	774	722	727	666	540
Co-occurring Tx need, percent	15%	17%	16%	17%	17%	13%	11%	13%	**	25%	27%	28%	28%	23%	20%	26%
Number of persons with MH crisis	1,354	1,630	1,540	1,575	1,690	1,338	1,053	998	**	209	216	201	192	158	125	131
Total number of persons	9,023	9,384	9,742	9,312	9,698	10,029	9,202	7,741	857	843	792	714	681	697	629	505
No known BH Tx need, percent	0%	0%	0%	0%	0%	0%	0%	0%	0%	0%	0%	0%	0%	0%	0%	0%
Number of persons with MH crisis	0	0	0	0	0	0	0	0	0	0	0	0	0	0	0	0
Total number of persons	158,873	161,689	165,849	169,690	169,366	162,385	163,441	168,658	536	545	539	559	579	559	549	521

PERSONS AGE 18 – 20																
MH Tx need, percent	6%	6%	5%	6%	6%	5%	3%	3%	8%	9%	11%	10%	12%	9%	6%	10%
Number of persons with MH crisis	1,184	1,403	1,558	1,886	2,202	1,855	1,242	1,288	18	27	38	41	53	45	34	63
Total number of persons	18,545	25,151	29,579	32,099	33,987	35,745	36,649	39,260	230	296	358	420	444	490	546	612
SUD Tx need, percent	9%	9%	8%	9%	11%	10%	6%	7%	*	15%	24%	16%	17%	15%	7%	17%
Number of persons with MH crisis	611	820	895	1,030	1,074	952	604	684	*	16	28	25	28	30	15	38
Total number of persons	7,171	9,579	10,883	11,025	10,171	9,856	9,317	9,194	73	110	118	155	163	195	202	229
Co-occurring Tx need, percent	15%	14%	13%	15%	15%	13%	9%	10%	*	18%	28%	19%	21%	18%	8%	18%
Number of persons with MH crisis	611	820	895	1,030	1,074	952	604	684	*	16	28	25	28	30	15	38
Total number of persons	4,194	5,666	6,790	7,098	7,102	7,300	6,776	6,797	62	91	101	134	132	170	181	208
No known BH Tx need, percent	0%	0%	0%	0%	0%	0%	0%	0%	0%	0%	0%	0%	0%	0%	0%	0%
Number of persons with MH crisis	0	0	0	0	0	0	0	0	0	0	0	0	0	0	0	0
Total number of persons	48,195	60,693	63,643	63,102	61,813	59,034	57,419	61,026	59	92	127	146	155	187	223	235

NOTES: ¹Crisis service data from 2019 through 2021 are currently incomplete, due to system changes associated with the transition to Integrated Managed Care. *In order to protect the privacy of individuals, cells in this data product that represent 10 or fewer persons are not displayed. **Some additional cells with n>10 have been suppressed to ensure that cells with small numbers cannot be recalculated.

Behavioral Health Treatment Needs and Outcomes among Medicaid-Enrolled Children in Washington State

[Back to Contents](#)

November 2023

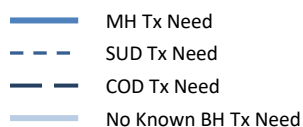
MEASURE 4

Mental Health Inpatient Services

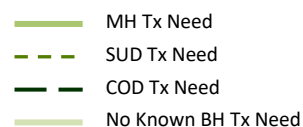
INDICATOR

Proportion of children with any inpatient mental health services in SFY.

ALL MEDICAID:

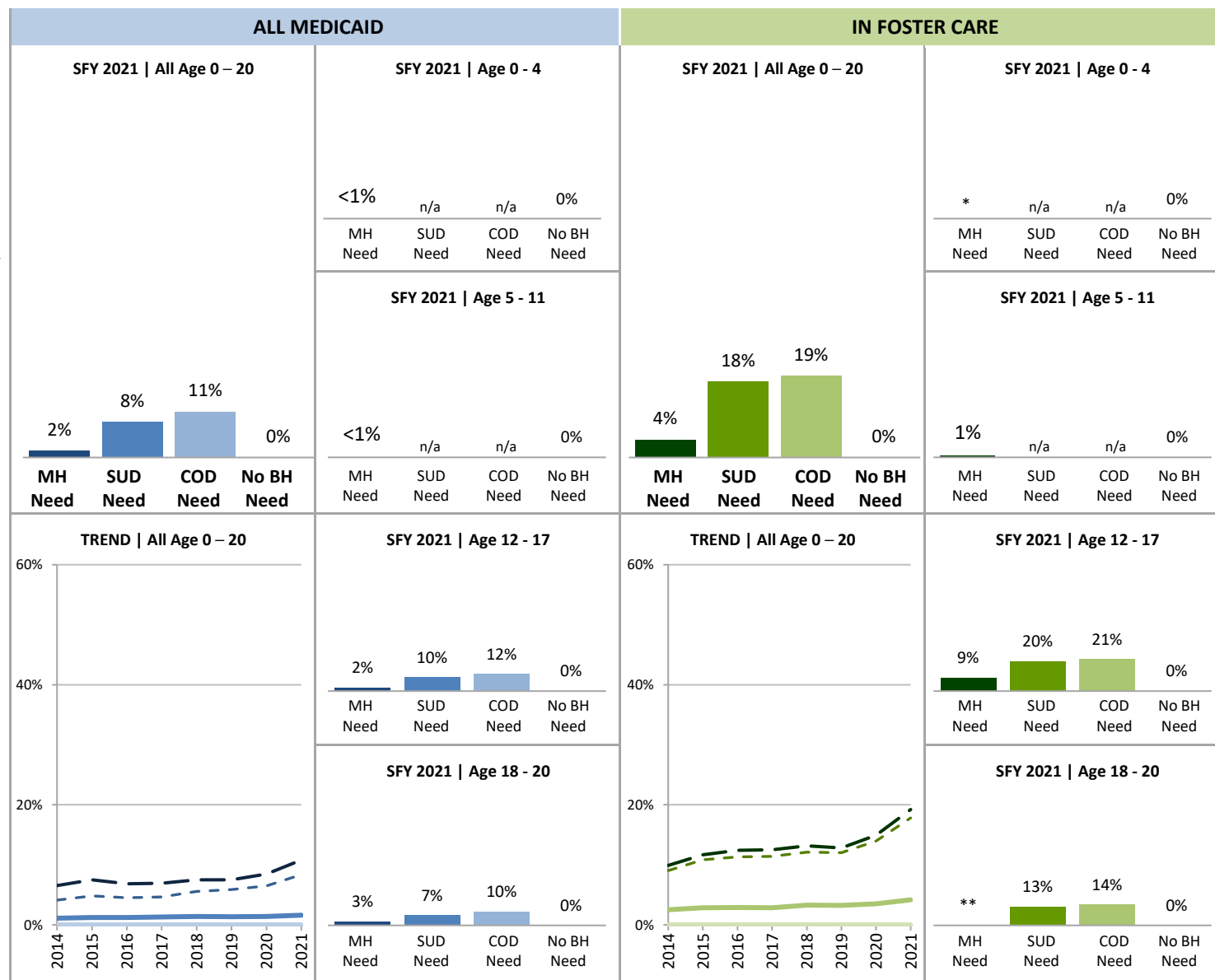


IN FOSTER CARE:



SOURCE & POPULATION

DSHS Integrated Client Databases. All children and youth with Medicaid coverage (includes SCHIP) and the subset of children and youth ever in foster care in SFY. * Data suppressed. See notes below for details.



SUPPORTING TABLES | 4 Mental Health Inpatient Services

STATE FISCAL YEAR	ALL MEDICAID								IN FOSTER CARE							
	2014	2015	2016	2017	2018	2019	2020	2021	2014	2015	2016	2017	2018	2019	2020	2021
TOTAL PERSONS AGE 0-20																
Total persons, percent	<1%	<1%	<1%	<1%	<1%	<1%	<1%	<1%	1%	1%	1%	1%	2%	2%	2%	2%
Number of persons with MH IP	1,670	1,999	2,174	2,471	2,879	2,973	3,019	3,592	195	225	223	224	267	267	267	280
Total number of persons	897,203	937,229	976,919	997,722	1,004,194	992,755	980,961	986,612	15,265	15,471	15,565	16,125	16,151	15,981	14,826	13,220
MH Tx need, percent	1%	1%	1%	1%	1%	1%	1%	2%	3%	3%	3%	3%	3%	3%	3%	4%
Number of persons with MH IP	1,670	1,999	2,173	2,470	2,879	2,973	3,012	3,585	195	225	223	224	267	267	266	280
Total number of persons	150,467	165,280	179,957	189,743	203,724	218,680	218,675	222,678	7,750	7,858	7,716	7,927	8,162	8,251	7,616	6,713
SUD Tx need, percent	4%	5%	5%	5%	6%	6%	6%	8%	9%	11%	11%	11%	12%	12%	14%	18%
Number of persons with MH IP	865	1,132	1,129	1,136	1,263	1,302	1,354	1,570	91	109	111	106	107	111	121	137
Total number of persons	20,997	23,389	25,005	24,352	22,633	22,101	20,881	18,768	1,007	1,006	981	929	885	922	868	769
Co-occurring Tx need, percent	7%	8%	7%	7%	8%	8%	8%	11%	10%	12%	12%	13%	13%	13%	15%	19%
Number of persons with MH IP	865	1,132	1,129	1,136	1,263	1,302	1,353	1,570	91	109	111	106	107	111	121	137
Total number of persons	13,217	15,050	16,532	16,410	16,800	17,329	15,978	14,538	919	934	893	848	813	867	810	713
No known BH Tx need, percent	0%	0%	0%	0%	0%	0%	0%	0%	0%	0%	0%	0%	0%	0%	0%	0%
Number of persons with MH IP	0	0	0	0	0	0	0	0	0	0	0	0	0	0	0	0
Total number of persons	738,956	763,610	788,489	800,037	794,637	769,303	757,383	759,704	7,427	7,541	7,761	8,117	7,917	7,675	7,152	6,451
PERSONS AGE 0 – 4																
MH Tx need, percent	*	*	*	*	*	*	<1%	<1%	0%	*	*	*	*	*	*	*
Number of persons with MH IP	*	*	*	*	*	*	12	32	0	*	*	*	*	*	*	*
Total number of persons	13,111	13,397	13,902	13,869	15,127	15,700	14,811	14,493	1,407	1,364	1,298	1,342	1,459	1,431	1,274	1,124
No known BH Tx need, percent	0%	0%	0%	0%	0%	0%	0%	0%	0%	0%	0%	0%	0%	0%	0%	0%
Number of persons with MH IP	0	0	0	0	0	0	0	0	0	0	0	0	0	0	0	0
Total number of persons	272,722	274,345	281,768	284,345	281,292	273,308	265,255	259,075	5,432	5,437	5,613	5,869	5,731	5,481	5,047	4,526
PERSONS AGE 5 – 11																
MH Tx need, percent	**	**	**	**	**	**	<1%	<1%	**	1%	1%	1%	2%	2%	1%	1%
Number of persons with MH IP	**	**	**	**	**	**	231	243	**	47	50	43	56	58	44	40
Total number of persons	57,141	59,997	63,898	67,009	71,312	74,277	71,306	68,982	3,341	3,448	3,454	3,561	3,617	3,604	3,272	2,745
No known BH Tx need, percent	0%	0%	0%	0%	0%	0%	0%	0%	0%	0%	0%	0%	0%	0%	0%	0%
Number of persons with MH IP	0	0	0	0	0	0	0	0	0	0	0	0	0	0	0	0
Total number of persons	259,166	266,883	277,229	282,900	282,166	274,576	271,268	270,945	1,400	1,467	1,482	1,543	1,452	1,448	1,333	1,169
PERSONS AGE 12 – 17																
MH Tx need, percent	2%	2%	2%	2%	2%	2%	2%	2%	5%	6%	6%	6%	7%	7%	8%	9%
Number of persons with MH IP	1,013	1,218	1,357	1,519	1,810	1,887	1,914	2,308	148	165	155	165	187	182	202	199
Total number of persons	61,670	66,735	72,578	76,766	83,298	92,958	95,909	99,943	2,772	2,750	2,606	2,604	2,642	2,726	2,524	2,232
SUD Tx need, percent	4%	5%	5%	5%	6%	6%	7%	10%	**	**	12%	12%	13%	13%	**	20%
Number of persons with MH IP	554	706	705	684	757	784	823	922	**	**	100	94	96	93	**	108
Total number of persons	13,826	13,810	14,122	13,327	12,462	12,245	11,564	9,574	934	896	863	774	722	727	666	540
Co-occurring Tx need, percent	6%	8%	7%	7%	8%	8%	9%	12%	**	**	13%	13%	14%	13%	**	21%
Number of persons with MH IP	554	706	705	684	757	784	823	922	**	**	100	94	96	93	**	108
Total number of persons	9,023	9,384	9,742	9,312	9,698	10,029	9,202	7,741	857	843	792	714	681	697	629	505
No known BH Tx need, percent	0%	0%	0%	0%	0%	0%	0%	0%	0%	0%	0%	0%	0%	0%	0%	0%
Number of persons with MH IP	0	0	0	0	0	0	0	0	0	0	0	0	0	0	0	0
Total number of persons	158,873	161,689	165,849	169,690	169,366	162,385	163,441	168,658	536	545	539	559	579	559	549	521

PERSONS AGE 18 – 20																
MH Tx need, percent	3%	2%	2%	2%	2%	2%	2%	3%	*	**	**	**	**	**	**	**
Number of persons with MH IP	465	575	592	725	789	806	855	1,002	*	**	**	**	**	**	**	**
Total number of persons	18,545	25,151	29,579	32,099	33,987	35,745	36,649	39,260	230	296	358	420	444	490	546	612
SUD Tx need, percent	4%	4%	4%	4%	5%	5%	6%	7%	*	*	9%	8%	7%	9%	*	13%
Number of persons with MH IP	311	426	424	452	506	518	531	648	*	*	11	12	11	18	*	29
Total number of persons	7,171	9,579	10,883	11,025	10,171	9,856	9,317	9,194	73	110	118	155	163	195	202	229
Co-occurring Tx need, percent	7%	8%	6%	6%	7%	7%	8%	10%	*	*	11%	9%	8%	11%	*	14%
Number of persons with MH IP	311	426	424	452	506	518	530	648	*	*	11	12	11	18	*	29
Total number of persons	4,194	5,666	6,790	7,098	7,102	7,300	6,776	6,797	62	91	101	134	132	170	181	208
No known BH Tx need, percent	0%	0%	0%	0%	0%	0%	0%	0%	0%	0%	0%	0%	0%	0%	0%	0%
Number of persons with MH IP	0	0	0	0	0	0	0	0	0	0	0	0	0	0	0	0
Total number of persons	48,195	60,693	63,643	63,102	61,813	59,034	57,419	61,026	59	92	127	146	155	187	223	235

NOTES: Mental health inpatient services (MH IP) include community psychiatric, Children's Long-term Inpatient (CLIP), Child Study and Treatment Center (CSTC), and State Hospitals. *In order to protect the privacy of individuals, cells in this data product that represent 10 or fewer persons are not displayed. **Some additional cells with n>10 have been suppressed to ensure that cells with small numbers cannot be recalculated.

Behavioral Health Treatment Needs and Outcomes among Medicaid-Enrolled Children in Washington State

[Back to Contents](#)

November 2023

MEASURE 5

Psychotropic Polypharmacy

INDICATOR

Proportion of children who filled four or more prescriptions for psychotropic medications in at least one month of SFY.

ALL MEDICAID:

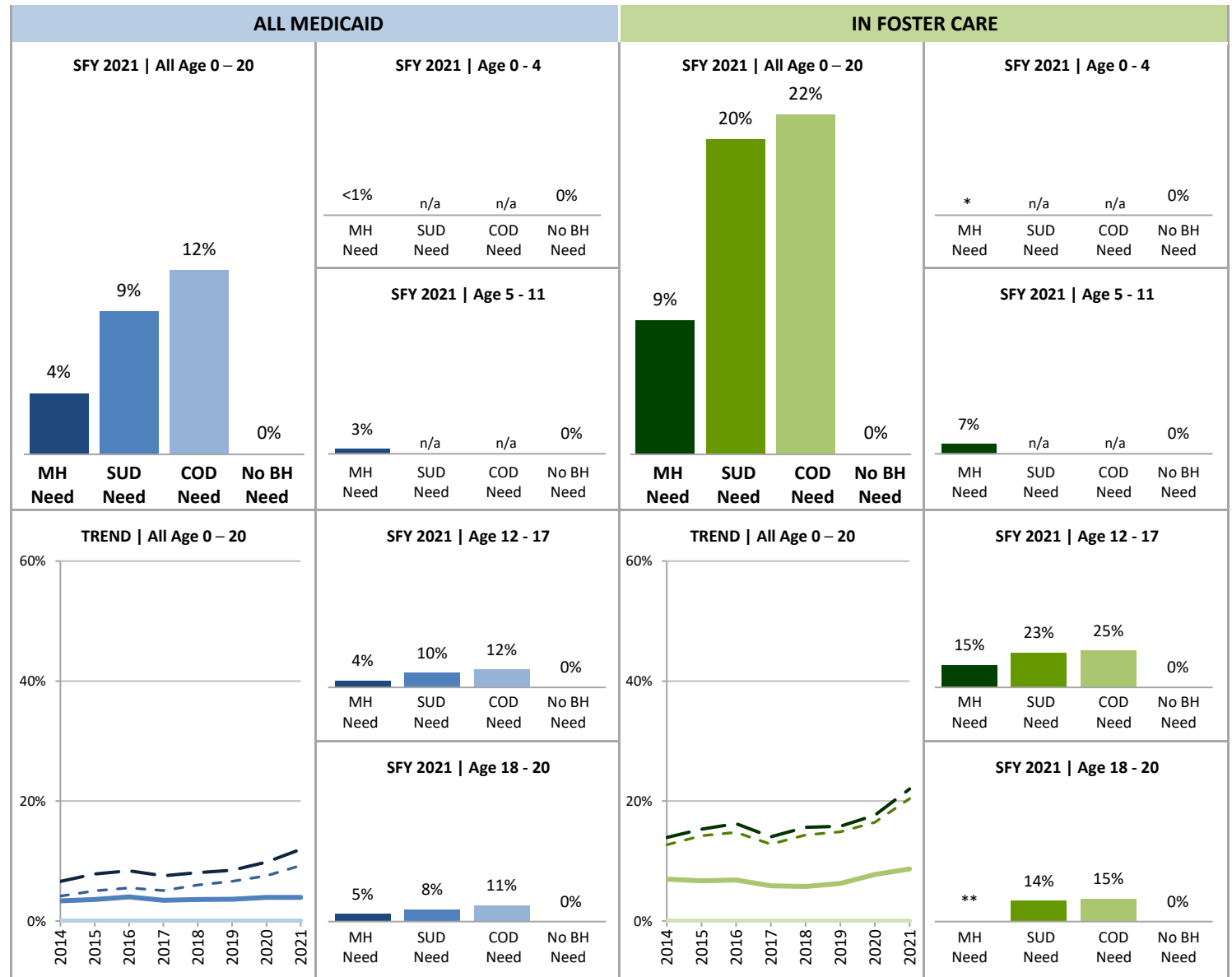
- MH Tx Need
- - - SUD Tx Need
- COD Tx Need
- No Known BH Tx Need

IN FOSTER CARE:

- MH Tx Need
- - - SUD Tx Need
- COD Tx Need
- No Known BH Tx Need

SOURCE & POPULATION

DSHS Integrated Client Databases. All children and youth with Medicaid coverage (includes SCHIP) and the subset of children and youth ever in foster care in SFY.



SUPPORTING TABLES | 5 Psychotropic Polypharmacy

	ALL MEDICAID								IN FOSTER CARE							
STATE FISCAL YEAR	2014	2015	2016	2017	2018	2019	2020	2021	2014	2015	2016	2017	2018	2019	2020	2021
TOTAL PERSONS AGE 0-20																
Total persons, percent	1%	1%	1%	1%	1%	1%	1%	1%	4%	3%	3%	3%	3%	3%	4%	4%
Number of persons w/psych. poly.	5,065	5,935	7,247	6,566	7,290	7,969	8,666	8,818	539	526	527	466	470	519	592	583
Total number of persons	897,203	937,229	976,919	997,722	1,004,194	992,755	980,961	986,612	15,265	15,471	15,565	16,125	16,151	15,981	14,826	13,220
MH Tx need, percent	3%	4%	4%	3%	4%	4%	4%	4%	7%	7%	7%	6%	6%	6%	8%	9%
Number of persons w/psych. poly.	5,065	5,935	7,247	6,566	7,290	7,969	8,666	8,818	539	526	527	466	470	519	592	583
Total number of persons	150,467	165,280	179,957	189,743	203,724	218,680	218,675	222,678	7,750	7,858	7,716	7,927	8,162	8,251	7,616	6,713
SUD Tx need, percent	4%	5%	6%	5%	6%	7%	8%	9%	13%	14%	15%	13%	14%	15%	16%	20%
Number of persons w/psych. poly.	874	1,183	1,385	1,239	1,359	1,467	1,572	1,738	128	143	145	119	127	137	143	157
Total number of persons	20,997	23,389	25,005	24,352	22,633	22,101	20,881	18,768	1,007	1,006	981	929	885	922	868	769
Co-occurring Tx need, percent	7%	8%	8%	8%	8%	8%	10%	12%	14%	15%	16%	14%	16%	16%	18%	22%
Number of persons w/psych. poly.	874	1,183	1,385	1,239	1,359	1,467	1,572	1,738	128	143	145	119	127	137	143	157
Total number of persons	13,217	15,050	16,532	16,410	16,800	17,329	15,978	14,538	919	934	893	848	813	867	810	713
No known BH Tx need, percent	0%	0%	0%	0%	0%	0%	0%	0%	0%	0%	0%	0%	0%	0%	0%	0%
Number of persons w/psych. poly.	0	0	0	0	0	0	0	0	0	0	0	0	0	0	0	0
Total number of persons	738,956	763,610	788,489	800,037	794,637	769,303	757,383	759,704	7,427	7,541	7,761	8,117	7,917	7,675	7,152	6,451
PERSONS AGE 0 – 4																
MH Tx need, percent	<1%	<1%	<1%	<1%	<1%	<1%	<1%	<1%	*	*	*	*	*	*	*	*
Number of persons w/psych. poly.	22	12	23	18	19	27	23	33	*	*	*	*	*	*	*	*
Total number of persons	13,111	13,397	13,902	13,869	15,127	15,700	14,811	14,493	1,407	1,364	1,298	1,342	1,459	1,431	1,274	1,124
No known BH Tx need, percent	0%	0%	0%	0%	0%	0%	0%	0%	0%	0%	0%	0%	0%	0%	0%	0%
Number of persons w/psych. poly.	0	0	0	0	0	0	0	0	0	0	0	0	0	0	0	0
Total number of persons	272,722	274,345	281,768	284,345	281,292	273,308	265,255	259,075	5,432	5,437	5,613	5,869	5,731	5,481	5,047	4,526
PERSONS AGE 5 – 11																
MH Tx need, percent	3%	3%	4%	3%	3%	3%	4%	3%	5%	4%	5%	5%	4%	5%	6%	7%
Number of persons w/psych. poly.	1,666	1,825	2,302	2,080	2,210	2,403	2,507	2,233	151	151	163	163	154	174	203	181
Total number of persons	57,141	59,997	63,898	67,009	71,312	74,277	71,306	68,982	3,341	3,448	3,454	3,561	3,617	3,604	3,272	2,745
No known BH Tx need, percent	0%	0%	0%	0%	0%	0%	0%	0%	0%	0%	0%	0%	0%	0%	0%	0%
Number of persons w/psych. poly.	0	0	0	0	0	0	0	0	0	0	0	0	0	0	0	0
Total number of persons	259,166	266,883	277,229	282,900	282,166	274,576	271,268	270,945	1,400	1,467	1,482	1,543	1,452	1,448	1,333	1,169
PERSONS AGE 12 – 17																
MH Tx need, percent	4%	4%	5%	4%	4%	4%	4%	4%	13%	12%	12%	10%	10%	11%	13%	15%
Number of persons w/psych. poly.	2,548	2,849	3,470	3,165	3,520	3,822	4,255	4,480	353	339	312	266	267	298	337	335
Total number of persons	61,670	66,735	72,578	76,766	83,298	92,958	95,909	99,943	2,772	2,750	2,606	2,604	2,642	2,726	2,524	2,232
SUD Tx need, percent	4%	5%	6%	5%	6%	7%	8%	10%	**	**	15%	14%	16%	16%	18%	23%
Number of persons w/psych. poly.	552	702	788	732	802	804	903	960	**	**	126	107	113	118	121	125
Total number of persons	13,826	13,810	14,122	13,327	12,462	12,245	11,564	9,574	934	896	863	774	722	727	666	540
Co-occurring Tx need, percent	6%	7%	8%	8%	8%	8%	10%	12%	**	**	16%	15%	17%	17%	19%	25%
Number of persons w/psych. poly.	552	702	788	732	802	804	903	960	**	**	126	107	113	118	121	125
Total number of persons	9,023	9,384	9,742	9,312	9,698	10,029	9,202	7,741	857	843	792	714	681	697	629	505
No known BH Tx need, percent	0%	0%	0%	0%	0%	0%	0%	0%	0%	0%	0%	0%	0%	0%	0%	0%
Number of persons w/psych. poly.	0	0	0	0	0	0	0	0	0	0	0	0	0	0	0	0
Total number of persons	158,873	161,689	165,849	169,690	169,366	162,385	163,441	168,658	536	545	539	559	579	559	549	521

PERSONS AGE 18 – 20																
MH Tx need, percent	4%	5%	5%	4%	5%	5%	5%	5%	**	**	**	**	**	**	**	**
Number of persons w/psych. poly.	829	1,249	1,452	1,303	1,541	1,717	1,881	2,072	**	**	**	**	**	**	**	**
Total number of persons	18,545	25,151	29,579	32,099	33,987	35,745	36,649	39,260	230	296	358	420	444	490	546	612
SUD Tx need, percent	4%	5%	5%	5%	5%	7%	7%	8%	*	*	16%	8%	9%	10%	11%	14%
Number of persons w/psych. poly.	322	481	597	507	557	663	669	778	*	*	19	12	14	19	22	32
Total number of persons	7,171	9,579	10,883	11,025	10,171	9,856	9,317	9,194	73	110	118	155	163	195	202	229
Co-occurring Tx need, percent	8%	8%	9%	7%	8%	9%	10%	11%	*	*	19%	9%	11%	11%	12%	15%
Number of persons w/psych. poly.	322	481	597	507	557	663	669	778	*	*	19	12	14	19	22	32
Total number of persons	4,194	5,666	6,790	7,098	7,102	7,300	6,776	6,797	62	91	101	134	132	170	181	208
No known BH Tx need, percent	0%	0%	0%	0%	0%	0%	0%	0%	0%	0%	0%	0%	0%	0%	0%	0%
Number of persons w/psych. poly.	0	0	0	0	0	0	0	0	0	0	0	0	0	0	0	0
Total number of persons	48,195	60,693	63,643	63,102	61,813	59,034	57,419	61,026	59	92	127	146	155	187	223	235

NOTES: *In order to protect the privacy of individuals, cells in this data product that represent 10 or fewer persons are not displayed. **Some additional cells with n>10 have been suppressed to ensure that cells with small numbers cannot be recalculated.

Behavioral Health Treatment Needs and Outcomes among Medicaid-Enrolled Children in Washington State

[Back to Contents](#)

November 2023

MEASURE 6

Criminal Legal Involvement

INDICATOR

Proportion of youth age 12-20 who have any criminal legal involvement in SFY, including arrests and convictions.

ALL MEDICAID:

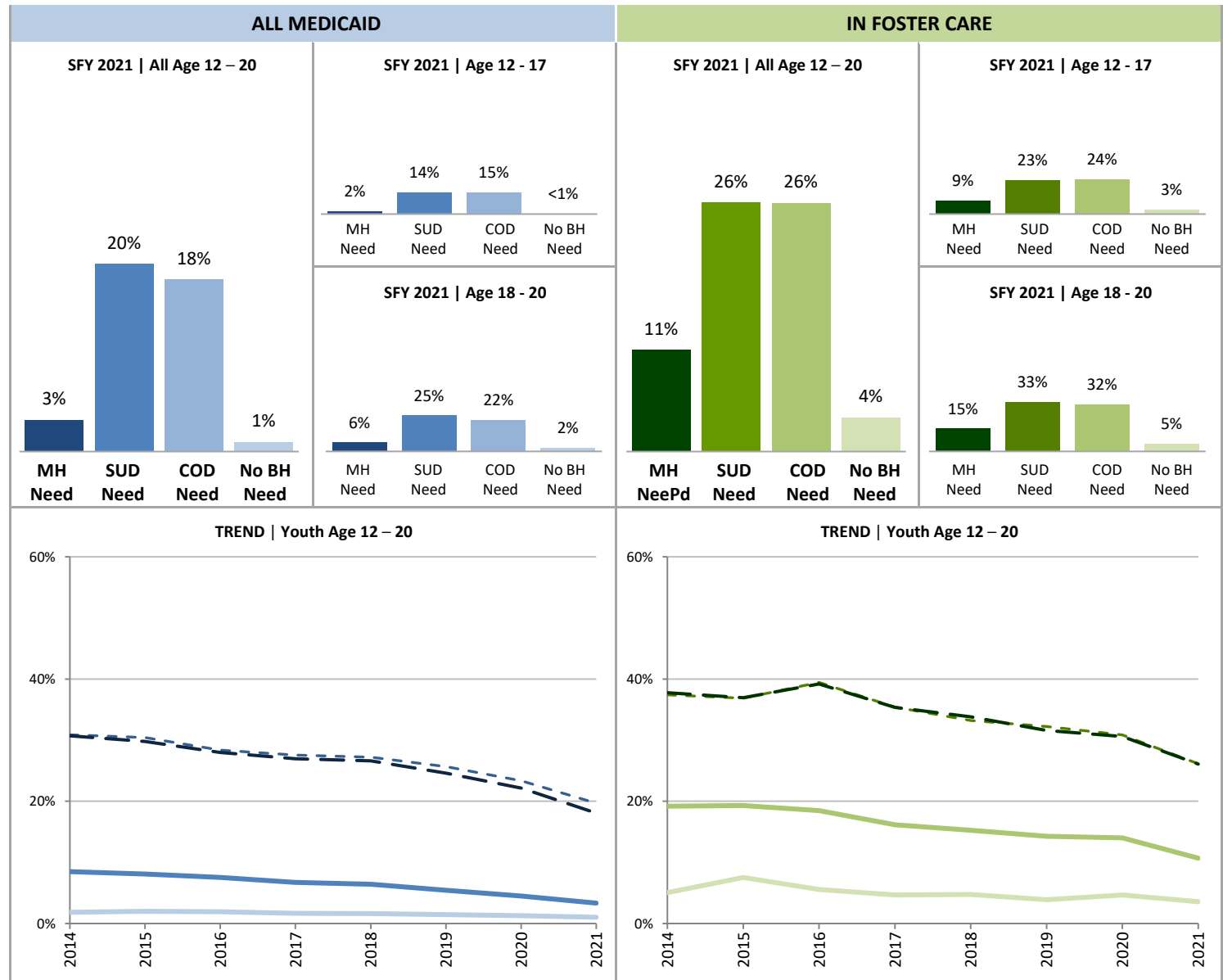
- MH Tx Need
- - - SUD Tx Need
- COD Tx Need
- No Known BH Tx Need

IN FOSTER CARE:

- MH Tx Need
- - - SUD Tx Need
- COD Tx Need
- No Known BH Tx Need

SOURCE & POPULATION

DSHS Integrated Client Databases:
Children and youth age 12-20 with
Medicaid coverage (includes SCHIP)
and the subset of children and youth
ever in foster care in SFY.



SUPPORTING TABLES | 6 Criminal Legal Involvement

STATE FISCAL YEAR	ALL MEDICAID								IN FOSTER CARE							
	2014	2015	2016	2017	2018	2019	2020	2021	2014	2015	2016	2017	2018	2019	2020	2021
PERSONS AGE 12 – 20																
All youth, percent	4%	4%	4%	4%	4%	3%	3%	2%	17%	18%	17%	14%	13%	13%	12%	9%
Number of persons with CLI	13,074	14,505	14,566	13,459	12,939	11,622	10,076	8,071	637	662	622	550	525	511	486	346
Total number of persons	295,063	322,607	340,122	349,599	354,297	354,894	358,321	373,117	3,685	3,755	3,718	3,810	3,892	4,017	3,900	3,656
MH Tx need, percent	8%	8%	8%	7%	6%	5%	4%	3%	19%	19%	18%	16%	15%	14%	14%	11%
Number of persons with CLI	6,809	7,428	7,710	7,304	7,543	7,027	5,938	4,650	577	588	548	488	471	459	430	304
Total number of persons	80,215	91,886	102,157	108,865	117,285	128,703	132,558	139,203	3,002	3,046	2,964	3,024	3,086	3,216	3,070	2,844
SUD Tx need, percent	31%	30%	28%	28%	27%	26%	23%	20%	37%	37%	39%	35%	33%	32%	31%	26%
Number of persons with CLI	6,483	7,116	7,099	6,712	6,158	5,673	4,876	3,695	377	371	387	329	294	297	268	201
Total number of persons	20,997	23,389	25,005	24,352	22,633	22,101	20,881	18,768	1,007	1,006	981	929	885	922	868	769
Co-occurring Tx need, percent	31%	30%	28%	27%	27%	25%	22%	18%	38%	37%	39%	35%	34%	32%	31%	26%
Number of persons with CLI	4,059	4,480	4,624	4,424	4,475	4,262	3,542	2,627	347	345	350	300	275	274	248	186
Total number of persons	13,217	15,050	16,532	16,410	16,800	17,329	15,978	14,538	919	934	893	848	813	867	810	713
No known BH Tx need, percent	2%	2%	2%	2%	2%	1%	1%	1%	5%	8%	6%	5%	5%	4%	5%	4%
Number of persons with CLI	3,841	4,441	4,381	3,867	3,713	3,184	2,804	2,353	30	48	37	33	35	29	36	27
Total number of persons	207,068	222,382	229,492	232,792	231,179	221,419	220,860	229,684	595	637	666	705	734	746	772	756
PERSONS AGE 12 – 17																
All youth, percent	3%	3%	3%	2%	2%	2%	2%	1%	18%	18%	17%	15%	13%	13%	12%	8%
Number of persons with CLI	7,068	6,990	6,689	6,200	5,840	5,241	4,546	3,264	597	607	549	478	436	416	379	230
Total number of persons	225,346	232,850	242,807	250,471	255,428	257,559	261,712	270,434	3,385	3,348	3,216	3,223	3,262	3,315	3,110	2,788
MH Tx need, percent	7%	6%	6%	5%	5%	4%	3%	2%	20%	20%	19%	17%	15%	14%	14%	9%
Number of persons with CLI	4,305	4,238	4,168	3,898	3,899	3,631	3,078	2,178	547	541	492	431	400	390	356	210
Total number of persons	61,670	66,735	72,578	76,766	83,298	92,958	95,909	99,943	2,772	2,750	2,606	2,604	2,642	2,726	2,524	2,232
SUD Tx need, percent	26%	25%	23%	23%	22%	20%	18%	14%	38%	38%	40%	38%	34%	33%	31%	23%
Number of persons with CLI	3,591	3,482	3,269	3,057	2,740	2,464	2,125	1,385	353	340	348	294	248	242	209	125
Total number of persons	13,826	13,810	14,122	13,327	12,462	12,245	11,564	9,574	934	896	863	774	722	727	666	540
Co-occurring Tx need, percent	28%	27%	25%	24%	23%	20%	19%	15%	**	**	**	**	35%	33%	32%	24%
Number of persons with CLI	2,527	2,501	2,402	2,250	2,197	2,051	1,729	1,127	**	**	**	**	235	229	202	120
Total number of persons	9,023	9,384	9,742	9,312	9,698	10,029	9,202	7,741	857	843	792	714	681	697	629	505
No known BH Tx need, percent	1%	1%	1%	1%	1%	1%	1%	<1%	**	**	**	**	4%	2%	3%	3%
Number of persons with CLI	1,699	1,771	1,654	1,495	1,398	1,197	1,072	828	**	**	**	**	23	13	16	15
Total number of persons	158,873	161,689	165,849	169,690	169,366	162,385	163,441	168,658	536	545	539	559	579	559	549	521
PERSONS AGE 18 – 20																
All youth, percent	9%	8%	8%	7%	7%	7%	6%	5%	13%	14%	15%	12%	14%	14%	14%	13%
Number of persons with CLI	6,006	7,515	7,877	7,259	7,099	6,381	5,530	4,807	40	55	73	72	89	95	107	116
Total number of persons	69,717	89,757	97,315	99,128	98,869	97,335	96,609	102,683	300	407	502	587	630	702	790	868
MH Tx need, percent	14%	13%	12%	11%	11%	10%	8%	6%	13%	16%	16%	14%	16%	14%	14%	15%
Number of persons with CLI	2,504	3,190	3,542	3,406	3,644	3,396	2,860	2,472	30	47	56	57	71	69	74	94
Total number of persons	18,545	25,151	29,579	32,099	33,987	35,745	36,649	39,260	230	296	358	420	444	490	546	612
SUD Tx need, percent	40%	38%	35%	33%	34%	33%	30%	25%	33%	28%	33%	23%	28%	28%	29%	33%
Number of persons with CLI	2,892	3,634	3,830	3,655	3,418	3,209	2,751	2,310	24	31	39	35	46	55	59	76
Total number of persons	7,171	9,579	10,883	11,025	10,171	9,856	9,317	9,194	73	110	118	155	163	195	202	229
Co-occurring Tx need, percent	37%	35%	33%	31%	32%	30%	27%	22%	**	**	**	**	30%	26%	25%	32%
Number of persons with CLI	1,532	1,979	2,222	2,174	2,278	2,211	1,813	1,500	**	**	**	**	40	45	46	66
Total number of persons	4,194	5,666	6,790	7,098	7,102	7,300	6,776	6,797	62	91	101	134	132	170	181	208
No known BH Tx need, percent	4%	4%	4%	4%	4%	3%	3%	2%	*	*	*	*	8%	9%	9%	5%
Number of persons with CLI	2,142	2,670	2,727	2,372	2,315	1,987	1,732	1,525	*	*	*	*	12	16	20	12
Total number of persons	48,195	60,693	63,643	63,102	61,813	59,034	57,419	61,026	59	92	127	146	155	187	223	235

NOTES: Criminal legal involvement was derived from Washington State Patrol arrest records, and convictions recorded in the Washington State Institute for Public Policy Criminal History Database. *In order to protect the privacy of individuals, cells in this data product that represent 10 or fewer persons are not displayed. **Some additional cells with n>10 have been suppressed to ensure that cells with small numbers cannot be recalculated.

Behavioral Health Treatment Needs and Outcomes among Medicaid-Enrolled Children in Washington State

[Back to Contents](#)

November 2023

MEASURE 7

Emergency Department Utilization

INDICATOR

Number of emergency department visits in SFY per 1,000 Medicaid (or SCHIP) member months.

ALL MEDICAID:

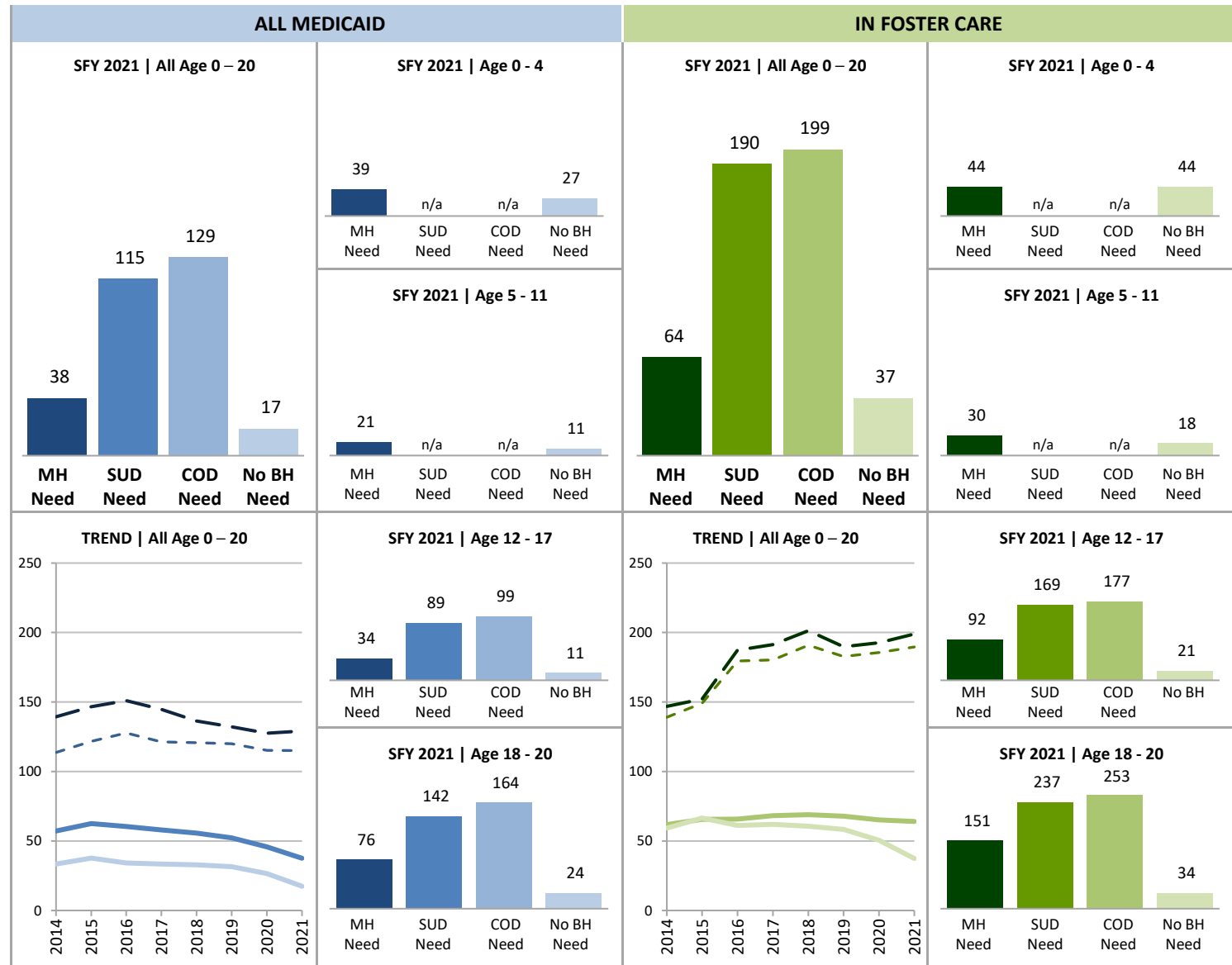
- MH Tx Need
- - - SUD Tx Need
- COD Tx Need
- No Known BH Tx Need

IN FOSTER CARE:

- MH Tx Need
- - - SUD Tx Need
- COD Tx Need
- No Known BH Tx Need

SOURCE & POPULATION

DSHS Integrated Client Databases. All children with Medicaid coverage (includes SCHIP) and the subset of children and youth ever in foster care in SFY.



SUPPORTING TABLES | 7 Emergency Department Utilization

STATE FISCAL YEAR	ALL MEDICAID								IN FOSTER CARE							
	2014	2015	2016	2017	2018	2019	2020	2021	2014	2015	2016	2017	2018	2019	2020	2021
TOTAL PERSONS AGE 0-20																
Total persons, rate	38	42	39	38	38	36	31	22	61	66	64	65	65	63	58	51
Number of persons	897,203	937,229	976,919	997,722	1,004,194	992,755	980,961	986,612	15,265	15,471	15,565	16,125	16,151	15,981	14,826	13,220
MH Tx need, rate	57	63	60	58	56	52	46	38	62	66	66	68	69	68	65	64
Number of persons	150,467	165,280	179,957	189,743	203,724	218,680	218,675	222,678	7,750	7,858	7,716	7,927	8,162	8,251	7,616	6,713
SUD Tx need, rate	114	122	128	121	121	120	115	115	139	149	180	180	191	183	186	190
Number of persons	20,997	23,389	25,005	24,352	22,633	22,101	20,881	18,768	1,007	1,006	981	929	885	922	868	769
Co-occurring Tx need, rate	139	147	151	145	136	132	128	129	147	152	187	191	201	190	193	199
Number of persons	13,217	15,050	16,532	16,410	16,800	17,329	15,978	14,538	919	934	893	848	813	867	810	713
No known BH Tx need, rate	34	38	34	33	33	32	27	17	59	67	61	62	61	58	51	37
Number of persons	738,956	763,610	788,489	800,037	794,637	769,303	757,383	759,704	7,427	7,541	7,761	8,117	7,917	7,675	7,152	6,451
PERSONS AGE 0 – 4																
MH Tx need, rate	69	76	70	68	67	64	56	39	62	67	57	59	57	57	53	44
Number of persons	13,111	13,397	13,902	13,869	15,127	15,700	14,811	14,493	1,407	1,364	1,298	1,342	1,459	1,431	1,274	1,124
No known BH Tx need, rate	51	58	52	51	51	49	41	27	69	77	70	74	69	69	60	44
Number of persons	272,722	274,345	281,768	284,345	281,292	273,308	265,255	259,075	5,432	5,437	5,613	5,869	5,731	5,481	5,047	4,526
PERSONS AGE 5 – 11																
MH Tx need, rate	36	41	38	37	36	34	29	21	38	43	38	39	38	37	35	30
Number of persons	57,141	59,997	63,898	67,009	71,312	74,277	71,306	68,982	3,341	3,448	3,454	3,561	3,617	3,604	3,272	2,745
No known BH Tx need, rate	22	26	23	22	22	21	18	11	32	41	39	30	37	30	28	18
Number of persons	259,166	266,883	277,229	282,900	282,166	274,576	271,268	270,945	1,400	1,467	1,482	1,543	1,452	1,448	1,333	1,169
PERSONS AGE 12 – 17																
MH Tx need, rate	54	59	58	55	53	48	41	34	88	89	94	100	103	98	93	92
Number of persons	61,670	66,735	72,578	76,766	83,298	92,958	95,909	99,943	2,772	2,750	2,606	2,604	2,642	2,726	2,524	2,232
SUD Tx need, rate	87	97	100	95	95	92	91	89	139	147	165	170	184	172	183	169
Number of persons	13,826	13,810	14,122	13,327	12,462	12,245	11,564	9,574	934	896	863	774	722	727	666	540
Co-occurring Tx need, rate	106	116	118	114	106	100	100	99	147	150	172	181	191	177	190	177
Number of persons	9,023	9,384	9,742	9,312	9,698	10,029	9,202	7,741	857	843	792	714	681	697	629	505
No known BH Tx need, rate	20	22	21	21	20	19	16	11	36	39	37	32	34	31	24	21
Number of persons	158,873	161,689	165,849	169,690	169,366	162,385	163,441	168,658	536	545	539	559	579	559	549	521
PERSONS AGE 18 – 20																
MH Tx need, rate	123	114	111	104	99	95	86	76	87	105	151	144	160	160	150	151
Number of persons	18,545	25,151	29,579	32,099	33,987	35,745	36,649	39,260	230	296	358	420	444	490	546	612
SUD Tx need, rate	165	158	164	153	152	154	145	142	136	167	288	230	222	222	193	237
Number of persons	7,171	9,579	10,883	11,025	10,171	9,856	9,317	9,194	73	110	118	155	163	195	202	229
Co-occurring Tx need, rate	210	198	198	185	177	176	165	164	148	174	311	249	256	244	201	253
Number of persons	4,194	5,666	6,790	7,098	7,102	7,300	6,776	6,797	62	91	101	134	132	170	181	208
No known BH Tx need, rate	42	40	37	37	35	35	31	24	32	44	25	40	60	36	40	34
Number of persons	48,195	60,693	63,643	63,102	61,813	59,034	57,419	61,026	59	92	127	146	155	187	223	235

Behavioral Health Treatment Needs and Outcomes among Medicaid-Enrolled Children in Washington State

[Back to Contents](#)

November 2023

MEASURE 8 Injuries

INDICATOR

Proportion of children who have received an injury diagnosis at least once in SFY.

ALL MEDICAID:

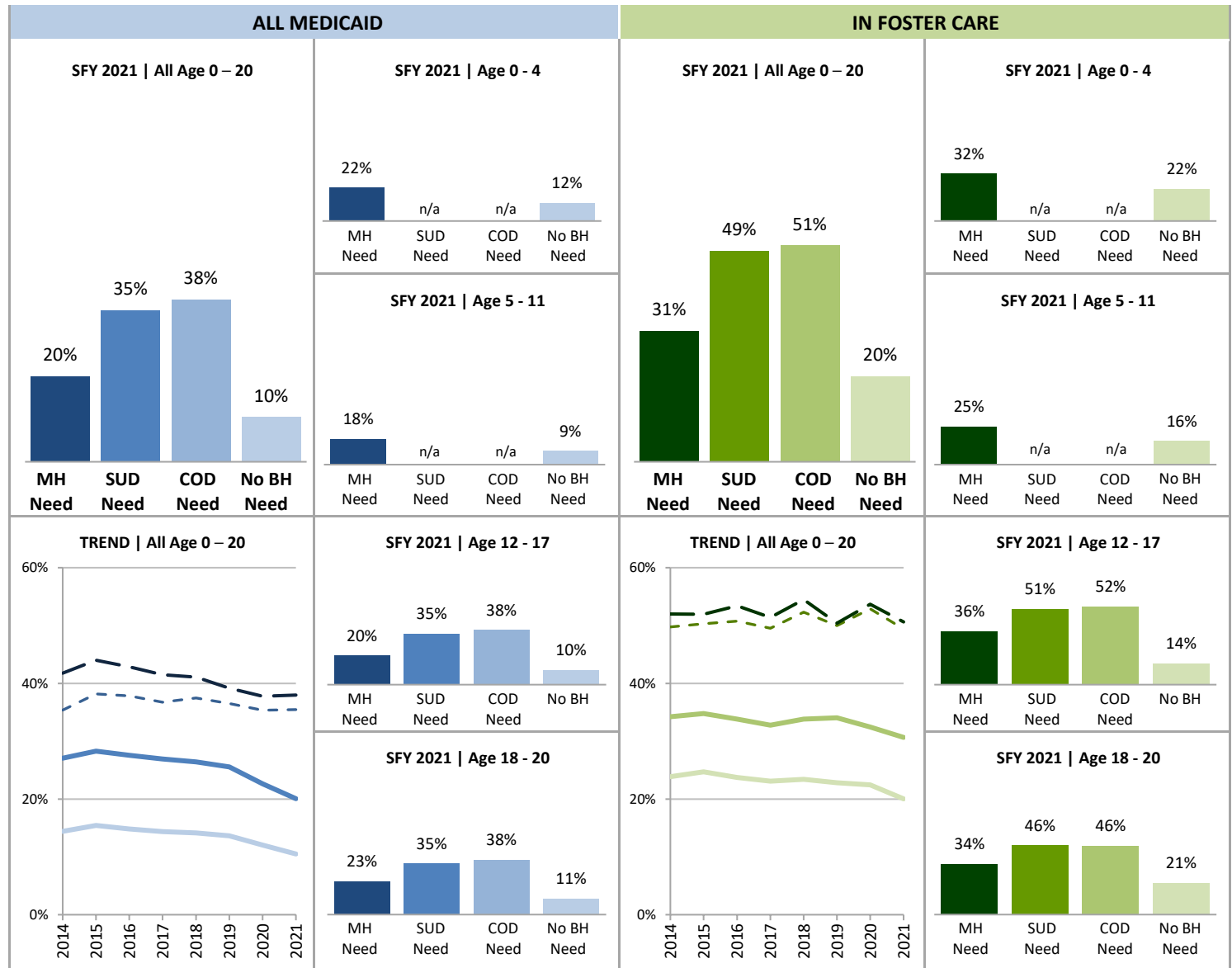
- MH Tx Need
- SUD Tx Need
- COD Tx Need
- No Known BH Tx Need

IN FOSTER CARE:

- MH Tx Need
- SUD Tx Need
- COD Tx Need
- No Known BH Tx Need

SOURCE & POPULATION

DSHS Integrated Client Databases. All children and youth with Medicaid coverage (includes SCHIP) and a subset of children and youth ever in foster care in SFY.



SUPPORTING TABLES | 8 Injuries

STATE FISCAL YEAR	ALL MEDICAID								IN FOSTER CARE							
	2014	2015	2016	2017	2018	2019	2020	2021	2014	2015	2016	2017	2018	2019	2020	2021
TOTAL PERSONS AGE 0-20																
Total persons, percent	17%	18%	17%	17%	17%	16%	14%	13%	29%	30%	29%	28%	29%	29%	28%	25%
Number of persons with injury	149,066	166,899	168,937	168,275	167,604	161,992	142,101	125,564	4,450	4,617	4,472	4,495	4,636	4,584	4,102	3,369
Total number of persons	897,203	937,229	976,919	997,722	1,004,194	992,755	980,961	986,612	15,265	15,471	15,565	16,125	16,151	15,981	14,826	13,220
MH Tx need, percent	27%	28%	28%	27%	26%	26%	23%	20%	34%	35%	34%	33%	34%	34%	32%	31%
Number of persons with injury	40,741	46,740	49,575	51,109	53,830	55,878	49,487	44,666	2,653	2,733	2,611	2,598	2,762	2,809	2,473	2,058
Total number of persons	150,467	165,280	179,957	189,743	203,724	218,680	218,675	222,678	7,750	7,858	7,716	7,927	8,162	8,251	7,616	6,713
SUD Tx need, percent	35%	38%	38%	37%	37%	37%	35%	35%	50%	50%	51%	50%	52%	50%	53%	49%
Number of persons with injury	7,429	8,928	9,458	8,949	8,485	8,074	7,382	6,657	501	506	498	460	463	461	459	380
Total number of persons	20,997	23,389	25,005	24,352	22,633	22,101	20,881	18,768	1,007	1,006	981	929	885	922	868	769
Co-occurring Tx need, percent	42%	44%	43%	42%	41%	39%	38%	38%	52%	52%	53%	51%	54%	50%	54%	51%
Number of persons with injury	5,519	6,622	7,089	6,811	6,902	6,786	6,035	5,524	478	485	477	436	443	437	435	361
Total number of persons	13,217	15,050	16,532	16,410	16,800	17,329	15,978	14,538	919	934	893	848	813	867	810	713
No known BH Tx need, percent	14%	15%	15%	14%	14%	14%	12%	10%	24%	25%	24%	23%	23%	23%	22%	20%
Number of persons with injury	106,415	117,853	116,993	115,028	112,191	104,826	91,267	79,765	1,774	1,863	1,840	1,873	1,854	1,751	1,605	1,292
Total number of persons	738,956	763,610	788,489	800,037	794,637	769,303	757,383	759,704	7,427	7,541	7,761	8,117	7,917	7,675	7,152	6,451
PERSONS AGE 0 – 4																
MH Tx need, percent	27%	28%	26%	25%	25%	24%	23%	22%	36%	35%	33%	30%	32%	34%	30%	32%
Number of persons with injury	3,604	3,736	3,621	3,501	3,769	3,782	3,352	3,215	500	484	433	408	472	492	386	360
Total number of persons	13,111	13,397	13,902	13,869	15,127	15,700	14,811	14,493	1,407	1,364	1,298	1,342	1,459	1,431	1,274	1,124
No known BH Tx need, percent	15%	15%	14%	14%	14%	13%	12%	12%	25%	25%	24%	24%	25%	24%	24%	22%
Number of persons with injury	40,215	42,017	40,203	38,973	38,685	36,433	32,624	30,682	1,355	1,385	1,375	1,426	1,415	1,328	1,208	985
Total number of persons	272,722	274,345	281,768	284,345	281,292	273,308	265,255	259,075	5,432	5,437	5,613	5,869	5,731	5,481	5,047	4,526
PERSONS AGE 5 – 11																
MH Tx need, percent	24%	25%	24%	23%	23%	23%	20%	18%	27%	30%	27%	28%	28%	29%	28%	25%
Number of persons with injury	13,533	14,879	15,162	15,643	16,527	16,868	14,175	12,234	917	1,021	946	982	998	1,043	908	694
Total number of persons	57,141	59,997	63,898	67,009	71,312	74,277	71,306	68,982	3,341	3,448	3,454	3,561	3,617	3,604	3,272	2,745
No known BH Tx need, percent	14%	15%	14%	14%	13%	13%	11%	9%	20%	21%	21%	19%	19%	20%	19%	16%
Number of persons with injury	35,395	39,272	39,551	39,163	38,065	35,691	30,233	25,421	274	307	311	292	282	285	249	182
Total number of persons	259,166	266,883	277,229	282,900	282,166	274,576	271,268	270,945	1,400	1,467	1,482	1,543	1,452	1,448	1,333	1,169
PERSONS AGE 12 – 17																
MH Tx need, percent	31%	32%	31%	31%	29%	28%	24%	20%	42%	41%	42%	40%	42%	40%	39%	36%
Number of persons with injury	19,084	21,036	22,601	23,505	24,565	26,197	23,407	20,164	1,160	1,123	1,090	1,048	1,114	1,090	989	797
Total number of persons	61,670	66,735	72,578	76,766	83,298	92,958	95,909	99,943	2,772	2,750	2,606	2,604	2,642	2,726	2,524	2,232
SUD Tx need, percent	38%	40%	39%	39%	39%	38%	37%	35%	50%	51%	50%	51%	53%	51%	55%	51%
Number of persons with injury	5,262	5,576	5,526	5,160	4,881	4,647	4,235	3,396	468	459	433	393	384	371	363	274
Total number of persons	13,826	13,810	14,122	13,327	12,462	12,245	11,564	9,574	934	896	863	774	722	727	666	540
Co-occurring Tx need, percent	44%	46%	44%	43%	42%	40%	39%	38%	52%	52%	53%	53%	55%	51%	55%	52%
Number of persons with injury	3,984	4,295	4,297	4,034	4,095	4,033	3,567	2,943	447	442	418	375	374	358	349	265
Total number of persons	9,023	9,384	9,742	9,312	9,698	10,029	9,202	7,741	857	843	792	714	681	697	629	505
No known BH Tx need, percent	17%	18%	18%	17%	17%	16%	14%	10%	25%	27%	24%	23%	21%	20%	20%	14%
Number of persons with injury	26,443	29,227	29,691	29,385	28,337	26,048	22,358	16,936	134	149	129	131	121	111	109	75
Total number of persons	158,873	161,689	165,849	169,690	169,366	162,385	163,441	168,658	536	545	539	559	579	559	549	521

PERSONS AGE 18 – 20																
MH Tx need, percent	24%	28%	28%	26%	26%	25%	23%	23%	33%	35%	40%	38%	40%	38%	35%	34%
Number of persons with injury	4,520	7,089	8,191	8,460	8,969	9,031	8,553	9,053	76	105	142	160	178	184	190	207
Total number of persons	18,545	25,151	29,579	32,099	33,987	35,745	36,649	39,260	230	296	358	420	444	490	546	612
SUD Tx need, percent	30%	35%	36%	34%	35%	35%	34%	35%	45%	43%	55%	43%	48%	46%	48%	46%
Number of persons with injury	2,167	3,352	3,932	3,789	3,604	3,427	3,147	3,261	33	47	65	67	79	90	96	106
Total number of persons	7,171	9,579	10,883	11,025	10,171	9,856	9,317	9,194	73	110	118	155	163	195	202	229
Co-occurring Tx need, percent	37%	41%	41%	39%	40%	38%	36%	38%	50%	47%	58%	46%	52%	46%	48%	46%
Number of persons with injury	1,535	2,327	2,792	2,777	2,807	2,753	2,468	2,581	31	43	59	61	69	79	86	96
Total number of persons	4,194	5,666	6,790	7,098	7,102	7,300	6,776	6,797	62	91	101	134	132	170	181	208
No known BH Tx need, percent	9%	12%	12%	12%	11%	11%	11%	11%	19%	24%	20%	16%	23%	14%	17%	21%
Number of persons with injury	4,362	7,337	7,548	7,507	7,104	6,654	6,052	6,726	11	22	25	24	36	27	39	50
Total number of persons	48,195	60,693	63,643	63,102	61,813	59,034	57,419	61,026	59	92	127	146	155	187	223	235

Behavioral Health Treatment Needs and Outcomes among Medicaid-Enrolled Children in Washington State

[Back to Contents](#)

November 2023

MEASURE 9

Teen Pregnancy

INDICATOR

Number of pregnant females per
1,000 females age 10 to 19 in SFY.

ALL MEDICAID:

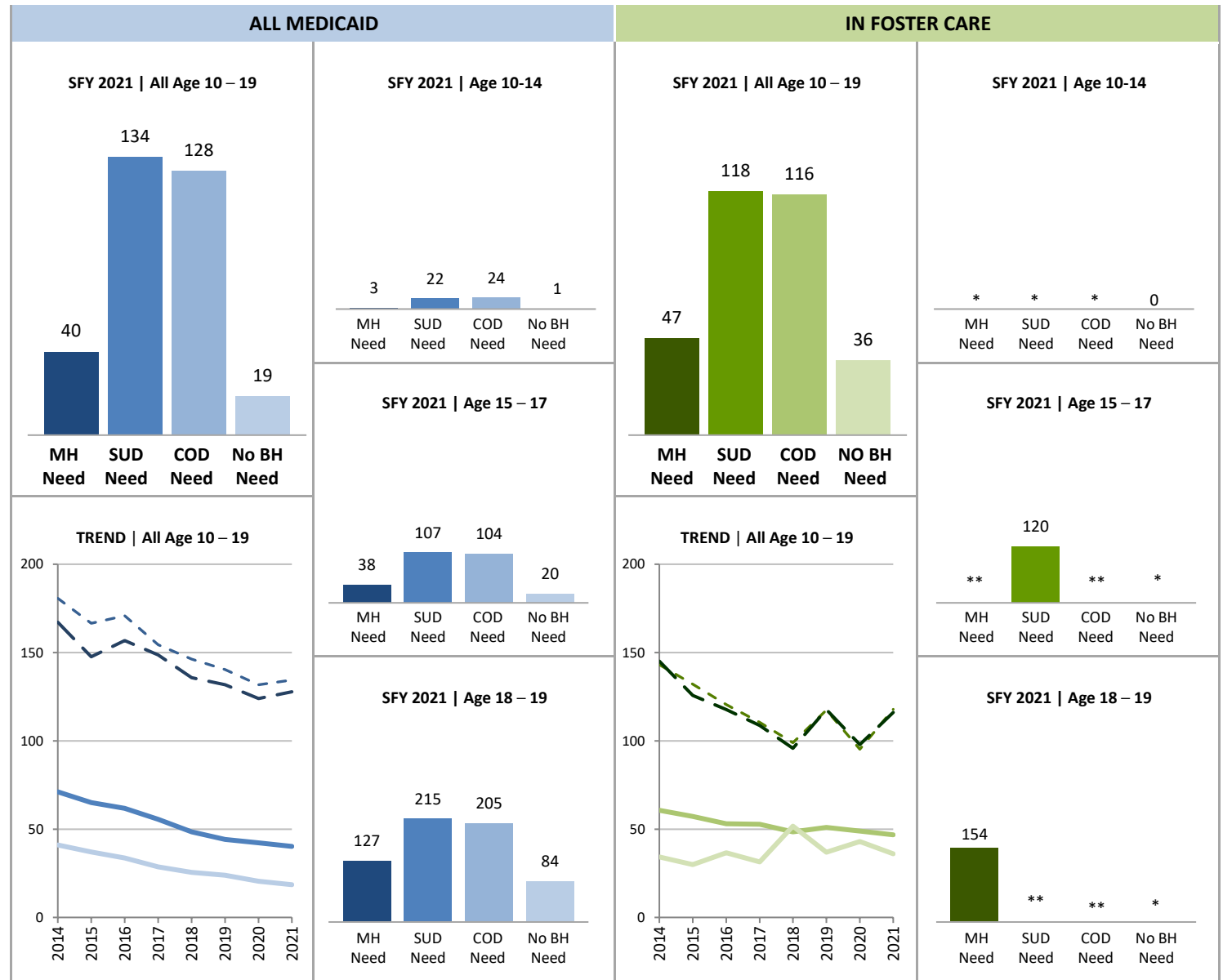
- MH Tx Need
- - - SUD Tx Need
- COD Tx Need
- No Known BH Tx Need

IN FOSTER CARE:

- MH Tx Need
- - - SUD Tx Need
- COD Tx Need
- No Known BH Tx Need

SOURCE & POPULATION

DSHS Integrated Client Databases.
Females age 10-19 with Medicaid
coverage (includes SCHIP) and a
subset of females age 10-19 ever in
foster care in SFY.



SUPPORTING TABLES | 9 Teen Pregnancy

STATE FISCAL YEAR	ALL MEDICAID								IN FOSTER CARE							
	2014	2015	2016	2017	2018	2019	2020	2021	2014	2015	2016	2017	2018	2019	2020	2021
TOTAL FEMALES AGE 10-19																
Total females, pregnancy rate	51	47	44	39	34	32	30	28	57	54	51	49	50	49	48	46
Total number of females	177,542	189,940	199,080	204,996	209,545	211,684	213,242	218,425	2,490	2,490	2,492	2,549	2,612	2,662	2,489	2,345
MH Tx need, pregnancy rate	71	65	62	56	48	44	42	40	61	57	53	53	48	51	49	47
Total number of females	46,387	52,930	58,727	63,302	68,901	76,452	78,965	84,401	2,011	1,994	1,961	2,011	2,083	2,156	2,002	1,881
SUD Tx need, pregnancy rate	181	167	171	154	146	140	132	134	143	132	120	110	99	117	95	118
Total number of females	7,991	8,886	9,557	9,347	8,632	8,523	8,145	7,497	552	553	523	498	475	460	441	399
Co-occurring Tx need, pregnancy rate	167	148	157	149	136	132	124	128	145	126	118	109	96	118	98	116
Total number of females	5,761	6,664	7,151	7,089	6,988	7,162	6,745	6,379	510	525	484	469	449	442	419	379
No known BH Tx need, pregnancy rate	41	37	34	29	25	24	21	19	34	30	37	31	52	37	43	36
Total number of females	128,925	134,788	137,947	139,436	139,000	133,871	132,877	132,906	437	468	492	509	503	488	465	444
FEMALES AGE 10-14																
Total females, pregnancy rate	3	3	3	2	2	2	2	2	13	13	10	13	*	*	8	*
Total number of females	96,916	100,119	105,137	108,630	112,306	114,758	116,245	117,634	1,371	1,375	1,430	1,453	1,482	1,513	1,365	1,269
MH Tx need, pregnancy rate	7	6	7	5	4	4	4	3	16	15	13	17	*	*	*	*
Total number of females	21,141	23,001	25,271	26,976	30,135	34,858	36,240	38,723	1,072	1,074	1,103	1,102	1,140	1,203	1,075	1,000
SUD Tx need, pregnancy rate	36	34	36	28	22	20	28	22	**	*	*	*	*	*	*	*
Total number of females	1,649	1,720	1,778	1,655	1,523	1,465	1,520	1,205	151	154	154	152	122	124	125	97
Co-occurring Tx need, pregnancy rate	39	36	42	32	24	21	26	24	**	*	*	*	*	*	*	*
Total number of females	1,220	1,377	1,365	1,270	1,265	1,227	1,285	1,070	138	149	147	148	115	120	117	90
No known BH Tx need, pregnancy rate	2	1	2	1	1	1	1	1	*	*	0	0	*	*	*	0
Total number of females	75,346	76,775	79,453	81,269	81,913	79,662	79,770	78,776	286	296	320	347	335	306	282	262
FEMALES AGE 15 – 17																
Total females, pregnancy rate	58	52	48	40	36	35	29	29	107	88	98	70	**	83	69	**
Total number of females	53,332	55,376	57,558	59,661	60,776	60,704	60,918	62,294	989	914	845	860	871	870	802	736
MH Tx need, pregnancy rate	75	68	65	53	47	44	38	38	108	95	101	73	70	85	69	**
Total number of females	17,308	19,141	21,150	23,006	24,717	26,707	27,112	28,411	840	769	700	730	745	738	678	602
SUD Tx need, pregnancy rate	150	135	138	114	114	110	93	107	154	125	137	104	116	135	83	120
Total number of females	4,122	4,317	4,547	4,337	4,025	4,064	3,851	3,442	369	345	315	278	277	267	240	208
Co-occurring Tx need, pregnancy rate	141	122	136	113	109	106	91	104	157	**	**	**	**	**	**	**
Total number of females	3,070	3,329	3,527	3,402	3,370	3,544	3,275	2,971	345	332	289	258	267	258	231	198
No known BH Tx need, pregnancy rate	46	39	35	30	26	25	21	20	96	*	*	*	*	*	*	*
Total number of females	34,972	35,247	35,388	35,720	35,404	33,477	33,230	33,412	125	132	119	110	116	123	115	124

FEMALES AGE 18 – 19																	
Total females, pregnancy rate	208	169	158	144	132	125	118	106	138	184	143	199	243	**	165	153	
Total number of females	27,294	34,445	36,385	36,705	36,463	36,222	36,079	38,497	130	201	217	236	259	279	322	340	
MH Tx need, pregnancy rate	232	187	170	163	146	139	137	127	141	166	120	190	**	**	**	154	
Total number of females	7,938	10,788	12,306	13,320	14,049	14,887	15,613	17,267	99	151	158	179	198	215	249	279	
SUD Tx need, pregnancy rate	345	295	291	269	250	240	243	215	*	**	*	**	**	**	**	**	
Total number of females	2,220	2,849	3,232	3,355	3,084	2,994	2,774	2,850	32	54	54	68	76	69	76	94	
Co-occurring Tx need, pregnancy rate	327	270	259	260	234	226	232	205	*	**	*	**	**	**	**	**	
Total number of females	1,471	1,958	2,259	2,417	2,353	2,391	2,185	2,338	27	44	48	63	67	64	71	91	
No known BH Tx need, pregnancy rate	191	154	142	127	117	109	99	84	*	*	*	*	327	*	*	*	
Total number of females	18,607	22,766	23,106	22,447	21,683	20,732	19,877	20,718	26	40	53	52	52	59	68	58	

NOTES: Pregnant females were identified by having at least one pregnancy-related diagnosis (e.g. encounter for supervision of normal first pregnancy, anemia complicating pregnancy) or procedure (e.g., prenatal testing, cesarean delivery) in the SFY. Note that the population for this measure differs from that of other measures in this dashboard; it focuses on females age 10-19 in order to make results comparable to other state and national reports on teen pregnancy. *In order to protect the privacy of individuals, cells in this data product that represent 10 or fewer persons are not displayed. **Some additional cells with n>10 have been suppressed to ensure that cells with small numbers cannot be recalculated.



Behavioral Health Treatment Needs and Outcomes among Medicaid-Enrolled Children in Washington State

[Back to Contents](#)

November 2023

TECHNICAL NOTES

SOURCE

- Data come from DSHS Integrated Client Databases (ICDB), a linked set of longitudinal databases with two decades of detailed risk, service utilization, expenditure, and outcome data for persons served by the Washington State Department of Social and Health Services (DSHS), Health Care Authority (HCA), and Department of Children, Youth, and Families (DCYF). The ICDB draws information from over 30 state agency data systems. See <https://www.dshs.wa.gov/sites/default/files/rda/reports/research-11-205.pdf> for more information.

POPULATION

- All children age 0 – 20 on Medicaid (including SCHIP) during the state fiscal year (SFY), and the subset of these children ever in foster care placement in the SFY. Included foster care children may enter foster care in the SFY, exit foster care in the SFY, or live in foster care placement throughout the year. In this dashboard, foster care refers to any out-of-home placement under the authority of DCYF (formerly DSHS's Children's Administration), including unpaid unlicensed relative care. "Youth" specifically refers to the 12-20 age range.

CATEGORIES OF TREATMENT NEED (2-year window)

- **Mental health treatment need (MH Tx need):** In the past 24 months, any mental health diagnosis, prescription or service recorded in state administrative data. The following diagnostic categories are included: Psychotic, Mania/Bipolar, Depressive, Anxiety, ADHD, Disruptive/Conduct/Impulse, and Adjustment. The following medication classes are included: Antipsychotic, Antimania, Antidepressant, Antianxiety, and ADHD. Mental health services include inpatient (State Hospital or Children's Long-Term Inpatient Program (CLIP), community inpatient) and outpatient (Integrated Managed care, BHO, child welfare behavioral rehabilitation services). MH Tx need can occur alone (MH Tx need only) or in combination with SUD Tx need (COD Tx need). Note this definition does not capture MH Tx need that occurs outside of state administrative data including privately paid or insured mental health services.
- **Substance use disorder treatment need (SUD Tx need):** In the past 24 months, at least one substance-related diagnosis, procedure, prescription, treatment, or arrest. As SUD Tx need is rare before adolescence, SUD is not measured for children under age 12. SUD Tx may occur alone (**SUD Tx need only**) or in combination with MH Tx need (COD Tx need). Note this definition does not capture SUD Tx need that occurs outside of state administrative data including privately paid or insured SUD services.
- **Co-occurring treatment needs (COD Tx need):** Presence of both a MH Tx need and SUD Tx need during the same 24-month period. As SUD Tx need is rare before adolescence, COD is not measured for children under age 12.
- **No known behavioral health treatment need (No known BH Tx need):** Neither a MH Tx need nor a SUD Tx need present during the 24-month period.



Behavioral Health Treatment Needs and Outcomes among Medicaid-Enrolled Children in Washington State

[Back to Contents](#)

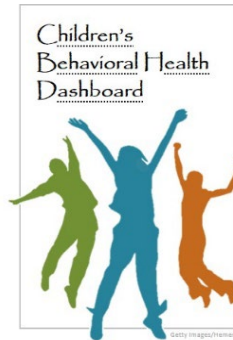
November 2023

REFERENCES

- Braciszewski, J. and R. L. Stout. (2012). "Substance use among current and former foster youth: A systematic review." *Children and Youth Services Review* , 34: 2337-2344.
- Dubois-Comtois, K., Bussi res, E. L., Cyr, C., St-Onge, J., Baudry, C., Milot, T., & Labb , A. P. (2021). Are children and adolescents in foster care at greater risk of mental health problems than their counterparts? A meta-analysis. *Children and Youth Services Review* , 127 , 106100.
- Keefe, R. J., Cummings, A. D., Greeley, C. S., & Van Horne, B. S. (2022). Mental health and developmental disorder diagnoses of foster and nonfoster children enrolled in Medicaid. *Journal of Developmental & Behavioral Pediatrics*, 43 (5), e296-e303.
- McGuire, A., Cho, B., Huffhines, L., Gusler, S., Brown, S., & Jackson, Y. (2018). The relation between dimensions of maltreatment, placement instability, and mental health among youth in foster care. *Child abuse & neglect*, 86 , 10-21.
- Patton, D., Liu, Q., Lucenko, B., Adelson, J., Mancuso, D., and Felver, B. (2018). "Childhood Adversity and Behavioral Health Costs for Adolescents in Washington State." DSHS Research and Data Analysis: Olympia, WA.
- Patton, D. A., Liu, Q., Adelson, J. D., & Lucenko, B. A. (2019). Assessing the social determinants of health care costs for Medicaid-enrolled adolescents in Washington State using administrative data. *Health Services Research*, 54(1), 52-63.
- Putnam-Hornstein, E., Foust, R., Cuccaro-Alamin, S., Prindle, J., Nghiem, H., Ahn, E., & Palmer, L. (2023). A population-based study of mental health diagnoses and child protection system involvement among medicaid-insured children. *The Journal of Pediatrics*, 252 , 117-123.
- Washington, T., Wrenn, A., Kaye, H., Priestler, M. A., Colombo, G., Carter, K., ... & Coakley, T. (2018). Psychosocial factors and behavioral health outcomes among children in Foster and Kinship care: A systematic review. *Children and Youth Services Review*, 90 , 118-133.
- Xu, Y., Bright, C. L., Barth, R. P., & Ahn, H. (2021). Poverty and economic pressure, financial assistance, and children's behavioral health in kinship care. *Child maltreatment*, 26 (1), 28-39.

Behavioral Health Treatment Needs and Outcomes among Medicaid-Enrolled Children in Washington State

November 2023



RDA CONTRIBUTORS

Andrew Iverson, PhD • Bridget Pavelle, PhD • Barbara Lucenko, PhD • Barbara E.M. Felver, MES, MPA

ACKNOWLEDGMENTS

Several of the measures included in this dashboard were modeled from measures developed in collaboration with the Children's Behavioral Health Data and Quality Team, a diverse group of children's behavioral health stakeholders in Washington State. For more information, see HCA's website (<https://www.hca.wa.gov/about-hca/behavioral-health-recovery/children-s-behavioral-health-data-and-quality-team>).