



# Behavioral Health Treatment Needs and Outcomes among Foster Care Children in Washington State

Youth Ages 3-17 in SFY 2011 - SFY 2013

DECEMBER 2015

This dashboard presents indicators for monitoring the behavioral health treatment needs and outcomes of children and youth receiving publicly funded medical coverage (Medicaid or SCHIP) in Washington State. Rates are compared for this group overall, and for the subset of children and youth in foster care at some point in the state fiscal year.

This dashboard provides a snapshot of the behavioral health needs and outcomes of foster care youth in Washington State by year, to assess trends in needs and outcomes in this population over time and to identify further opportunities for linking these youth with appropriate behavioral health services. Findings show that behavioral health treatment needs are substantially greater among children and youth in Washington's foster care system compared to others receiving publicly funded medical coverage. This mirrors prior research from across the United States that documents the higher prevalence of behavioral health problems for foster care children relative to their peers (dosReis et al. 2001; Burns et al. 2004; Leslie et al. 2004; Braciszewski and Stout 2012; Havlicek, Garcia, and Smith 2013).

One reason for the greater documented behavioral health needs among youth in foster care is that contact with child welfare caseworkers facilitates access to behavioral health assessment and services. Using nationally representative, longitudinal survey data on children undergoing investigation for abuse and neglect, one recent study found a large increase in mental health service utilization immediately following initial contact with child welfare (Leslie et al. 2005).

Foster care youth also have higher rates of behavioral health needs due to their past exposure to adverse experiences and risk factors linked with behavioral health problems. Such factors include economic deprivation; instability in living situation; family conflict; trauma and abuse; and exposure to parental mental illness or substance use disorder (Hawkins, Catalano, and Miller 1992; Burns et al. 2004; Braciszewski and Stout 2012).

These measures were produced by  
the DSHS Research and Data  
Analysis Division in collaboration  
with

- DSHS Children's Administration
- DSHS Division of Behavioral Health  
and Recovery
- University of Washington



# Behavioral Health Treatment Needs and Outcomes among Foster Care Children in Washington State

DECEMBER 2015

## CONTENTS

### Reference Information

- [TABLE 0.1](#) Population Reference Table, SFY 2011-2013
- [TABLE 0.2](#) Behavioral Health Treatment Needs of Medicaid Children, by Foster Care Status, SFY 2013
- [TABLE 0.3](#) Behavioral Health Treatment Needs, by Abuse and Neglect History, SFY 2013
- [TABLE 0.4](#) Indications of Mental Health Treatment Need, SFY 2013

### Outcomes

- [MEASURE 1](#) Treatment Penetration for Youth with Mental Health Treatment Needs
- [MEASURE 2](#) Treatment Penetration for Youth with Substance Use Disorder (SUD) Treatment Needs and Co-Occurring (COD=MH+SUD) Treatment Needs
- [MEASURE 3](#) Mental Health Crisis Services
- [MEASURE 4](#) Mental Health Inpatient Services
- [MEASURE 5](#) Psychotropic Polypharmacy
- [MEASURE 6](#) Involvement in Criminal Justice System
- [MEASURE 7](#) Emergency Room Utilization
- [MEASURE 8](#) Injuries

### Notes and References

- [NOTE A.1](#) Technical Notes
- [NOTE A.2](#) References
- [NOTE A.3](#) Contributors
- [NOTE A.4](#) Acknowledgments



# Behavioral Health Treatment Needs and Outcomes among Foster Care Children in Washington State

## 0.1 Population Reference Table, SFY 2011-2013

SFY 2011 - SFY 2013 • BEHAVIORAL HEALTH TREATMENT NEEDS (MEASURED IN CURRENT AND PREVIOUS SFY)

STATE FISCAL YEAR	IN FOSTER CARE								ALL MEDICAID							
	2011		2012		2013		2014		2011		2012		2013		2014	
	N	%	N	%	N	%	N	%	N	%	N	%	N	%	N	%
<b>TOTAL PERSONS AGE 3-17</b>	<b>10,037</b>	<b>100%</b>	<b>9,659</b>	<b>100%</b>	<b>9,740</b>	<b>100%</b>			<b>582,797</b>	<b>100%</b>	<b>600,961</b>	<b>100%</b>	<b>611,243</b>	<b>100%</b>		
No known BH Tx need (no MH, no SUD)	2,993	30%	2,938	30%	3,034	31%			468,936	80%	481,748	80%	488,050	80%		
MH Tx need	6,957	69%	6,663	69%	6,640	68%			109,116	19%	114,499	19%	118,591	19%		
SUD Tx need	829	8%	766	8%	825	8%			11,566	2%	11,833	2%	12,011	2%		
Co-occurring Tx need (MH + SUD)	742	7%	708	7%	759	8%			6,821	1%	7,119	1%	7,409	1%		
<b>BY AGE: PERSONS 3 - 4 YEARS</b>	<b>1,954</b>	<b>100%</b>	<b>2,042</b>	<b>100%</b>	<b>2,090</b>	<b>100%</b>			<b>97,317</b>	<b>100%</b>	<b>101,258</b>	<b>100%</b>	<b>100,464</b>	<b>100%</b>		
No known BH Tx need (no MH, no SUD)	1,133	58%	1,152	56%	1,184	57%			88,781	91%	92,059	91%	91,512	91%		
MH Tx need	821	42%	890	44%	906	43%			8,536	9%	9,199	9%	8,952	9%		
<b>BY AGE: PERSONS 5 - 11 YEARS</b>	<b>4,353</b>	<b>100%</b>	<b>4,176</b>	<b>100%</b>	<b>4,369</b>	<b>100%</b>			<b>284,636</b>	<b>100%</b>	<b>293,567</b>	<b>100%</b>	<b>300,984</b>	<b>100%</b>		
No known BH Tx need (no MH, no SUD)	1,243	29%	1,206	29%	1,314	30%			235,359	83%	242,114	82%	247,519	82%		
MH Tx need	3,110	71%	2,970	71%	3,055	70%			49,277	17%	51,453	18%	53,465	18%		
<b>BY AGE: PERSONS 12 - 17 YEARS</b>	<b>3,730</b>	<b>100%</b>	<b>3,441</b>	<b>100%</b>	<b>3,281</b>	<b>100%</b>			<b>200,844</b>	<b>100%</b>	<b>206,136</b>	<b>100%</b>	<b>209,795</b>	<b>100%</b>		
No known BH Tx need (no MH, no SUD)	617	17%	580	17%	536	16%			144,796	72%	147,575	72%	149,019	71%		
MH Tx need	3,026	81%	2,803	81%	2,679	82%			51,303	26%	53,847	26%	56,174	27%		
SUD Tx need	829	22%	766	22%	825	25%			11,566	6%	11,833	6%	12,011	6%		
Co-occurring Tx need (MH + SUD)	742	20%	708	21%	759	23%			6,821	3%	7,119	3%	7,409	4%		

**SOURCE & POPULATION**

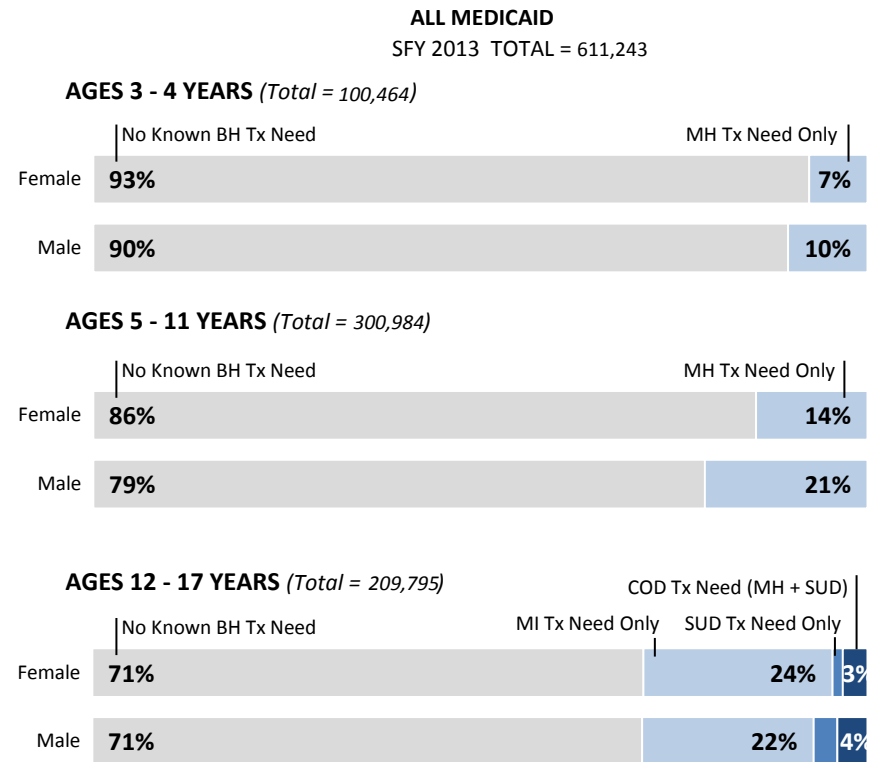
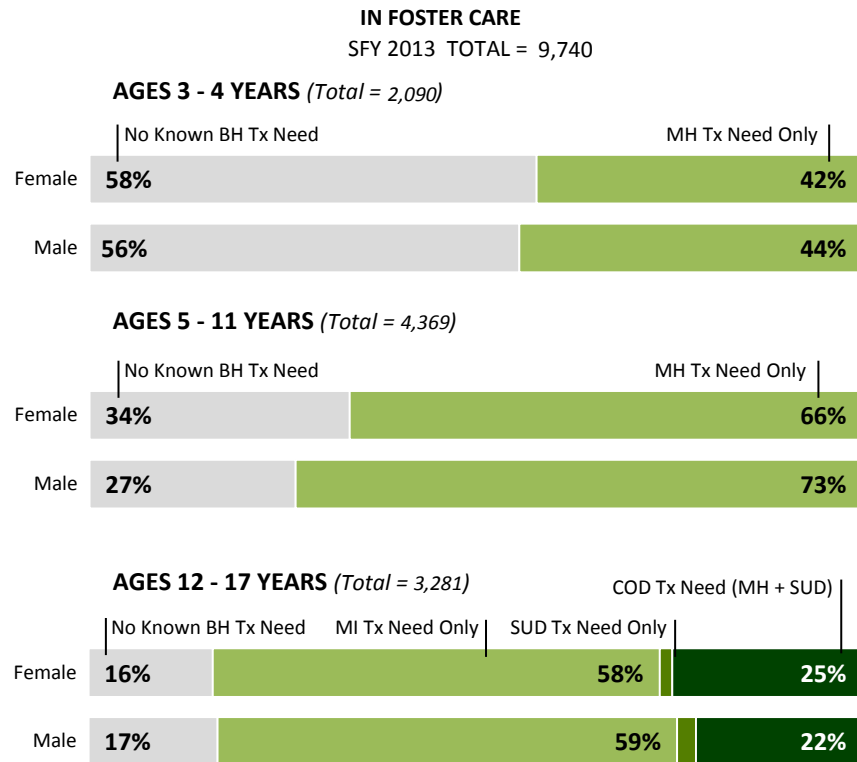
DSHS Integrated Client Database. Youth in foster care ever in SFY, and all youth with Medicaid coverage in SFY.



# Behavioral Health Treatment Needs and Outcomes among Foster Care Children in Washington State

## 0.2 Behavioral Health Treatment Needs of Medicaid Children, by Foster Care Status, SFY 2013

SFY 2013 COHORT • BEHAVIORAL HEALTH TREATMENT NEEDS (MEASURED IN CURRENT AND PREVIOUS SFY)



### DEFINITIONS

Number and proportion of Medicaid children, by foster care status, who have no known behavioral health (BH) treatment need, mental health (MH) treatment need, substance use disorder treatment need (SUD), or co-occurring treatment need (COD = MH + SUD) in the current or previous SFY. Youth with mental health treatment need (MH) have a mental health-related diagnosis, procedure, prescription, or treatment in the current or previous SFY. Youth with SUD treatment need have at least one substance-related diagnosis, procedure, prescription, treatment, or arrest in the current or previous SFY. Youth with COD have indications of both mental health treatment need (MH) and substance use disorder treatment need (SUD) in the same two-year time window. As substance use disorder treatment need is rare before adolescence, SUD and COD are unmeasured for youth under age 12. See technical notes for more detailed definitions.

### SOURCE & POPULATION

DSHS Integrated Client Database. Youth in foster care ever in SFY, and all youth with Medicaid coverage in SFY.



# Behavioral Health Treatment Needs and Outcomes among Foster Care Children in Washington State

## 0.3 Behavioral Health Treatment Needs, by Abuse and Neglect History, SFY 2013

SFY 2013 COHORT • BEHAVIORAL HEALTH TREATMENT NEEDS (MEASURED IN CURRENT AND PREVIOUS SFY)

STATE FISCAL YEAR	IN FOSTER CARE										ALL MEDICAID			
	N	%	N	%	N	%	N	%	N	%	N	%	N	%
	Abuse/Neglect History Unknown		Ever Abuse/Neglect		Ever Neglect		Ever Physical Abuse		Ever Sexual Abuse		No Known Abuse/Neglect		Ever Abuse/Neglect	
<b>POPULATION PROPORTIONS (row %)</b>	<b>315</b>	<b>3%</b>	<b>9,425</b>	<b>97%</b>	<b>9,234</b>	<b>95%</b>	<b>4,986</b>	<b>51%</b>	<b>2,251</b>	<b>23%</b>	<b>417,100</b>	<b>68%</b>	<b>194,143</b>	<b>32%</b>
<b>PROPORTIONS WITH BH TX NEEDS (col. %)</b>														
<b>TOTAL PERSONS AGE 3-17</b>	<b>315</b>		<b>9,425</b>		<b>9,234</b>		<b>4,986</b>		<b>2,251</b>		<b>417,100</b>		<b>194,143</b>	
No known BH Tx need (no MH, no SUD)	179	57%	2,855	30%	2,782	30%	1,058	21%	351	16%	363,459	87%	124,591	64%
MH Tx need	133	42%	6,507	69%	6,395	69%	3,888	78%	1,880	84%	51,479	12%	67,112	35%
SUD Tx need	19	6%	806	9%	786	9%	588	12%	397	18%	4,008	1%	8,003	4%
Co-occurring Tx need (MH + SUD)	16	5%	743	8%	729	8%	548	11%	377	17%	1,846	0%	5,563	3%
<b>BY AGE: PERSONS 3 - 4 YEARS</b>	<b>94</b>		<b>1,996</b>		<b>1,971</b>		<b>706</b>		<b>167</b>		<b>77,542</b>		<b>22,922</b>	
No known BH Tx need (no MH, no SUD)	69	73%	1,115	56%	1,099	56%	326	46%	66	40%	72,690	94%	18,822	82%
MH Tx need	25	27%	881	44%	872	44%	380	54%	101	60%	4,852	6%	4,100	18%
<b>BY AGE: PERSONS 5 - 11 YEARS</b>	<b>135</b>		<b>4,234</b>		<b>4,161</b>		<b>2,120</b>		<b>822</b>		<b>207,961</b>		<b>93,023</b>	
No known BH Tx need (no MH, no SUD)	80	59%	1,234	29%	1,203	29%	462	22%	160	19%	184,565	89%	62,954	68%
MH Tx need	55	41%	3,000	71%	2,958	71%	1,658	78%	662	81%	23,396	11%	30,069	32%
<b>BY AGE: PERSONS 12 - 17 YEARS</b>	<b>86</b>		<b>3,195</b>		<b>3,102</b>		<b>2,160</b>		<b>1,262</b>		<b>131,597</b>		<b>78,198</b>	
No known BH Tx need (no MH, no SUD)	30	35%	506	16%	480	15%	270	13%	125	10%	106,204	81%	42,815	55%
MH Tx need	53	62%	2,626	82%	2,565	83%	1,850	86%	1,117	89%	23,231	18%	32,943	42%
SUD Tx need	19	22%	806	25%	786	25%	588	27%	397	31%	4,008	3%	8,003	10%
Co-occurring Tx need (MH + SUD)	16	19%	743	23%	729	24%	548	25%	377	30%	1,846	1%	5,563	7%

**SOURCE & POPULATION**

DSHS Integrated Client Database. Youth in foster care ever in SFY, and all youth with Medicaid coverage in SFY.



# Behavioral Health Treatment Needs and Outcomes among Foster Care Children in Washington State

## 0.4 Indications of Mental Health Treatment Need, SFY 2013

SFY 2013 COHORT • MENTAL HEALTH TREATMENT NEEDS (MEASURED IN CURRENT AND PREVIOUS SFY)

	IN FOSTER CARE						ALL MEDICAID					
	N		%		N		%		N		%	
	Age 3-4	Age 5-11	Age 12-17	Age 3-4	Age 5-11	Age 12-17	Age 3-4	Age 5-11	Age 12-17			
<b>TOTAL POPULATION</b>	<b>2,090</b>		<b>4,369</b>		<b>3,281</b>		<b>100,464</b>		<b>300,984</b>		<b>209,795</b>	
<b>Diagnoses</b>	753	36%	2,735	63%	2,434	74%	6,668	7%	39,046	13%	42,978	20%
Psychotic disorder	5	0%	104	2%	310	9%	36	0%	750	0%	2,367	1%
Mania or bipolar disorder	28	1%	266	6%	656	20%	220	0%	3,834	1%	6,633	3%
Depression	24	1%	465	11%	1,301	40%	184	0%	6,985	2%	22,579	11%
Anxiety	362	17%	1,754	40%	1,567	48%	2,981	3%	19,789	7%	21,590	10%
ADHD/conduct/impulse disorder	260	12%	886	20%	892	27%	3,086	3%	14,716	5%	9,237	4%
Adjustment disorder	297	14%	981	22%	541	16%	1,339	1%	8,263	3%	6,787	3%
<b>Prescriptions Filled</b>	<b>130</b>	<b>6%</b>	<b>1,063</b>	<b>24%</b>	<b>1,579</b>	<b>48%</b>	<b>2,065</b>	<b>2%</b>	<b>24,930</b>	<b>8%</b>	<b>30,644</b>	<b>15%</b>
Antipsychotic medications	19	1%	217	5%	563	17%	95	0%	2,459	1%	4,337	2%
Antimania medications	0	0%	6	0%	67	2%	0	0%	79	0%	396	0%
Antidepressants	13	1%	279	6%	1,057	32%	91	0%	4,495	1%	14,398	7%
Antianxiety medications	79	4%	179	4%	409	12%	1,569	2%	4,616	2%	7,599	4%
ADHD medications	40	2%	856	20%	803	24%	408	0%	19,111	6%	15,214	7%
<b>Mental Health Services</b>	<b>753</b>	<b>36%</b>	<b>2,786</b>	<b>64%</b>	<b>2,441</b>	<b>74%</b>	<b>4,513</b>	<b>4%</b>	<b>33,278</b>	<b>11%</b>	<b>34,578</b>	<b>16%</b>
DBHR Outpatient Mental Health Services	609	29%	2,418	55%	2,078	63%	3,171	3%	25,720	9%	28,054	13%
DBHR Inpatient Mental Health Services	3	0%	61	1%	208	6%	5	0%	287	0%	1,433	1%
CA Behavioral Rehabilitation Services	15	1%	269	6%	855	26%	16	0%	323	0%	988	0%
HCA Mental Health Services	175	8%	652	15%	680	21%	1,516	2%	10,259	3%	9,996	5%
Tribal Mental Health Services	88	4%	373	9%	345	11%	502	0%	3,545	1%	3,510	2%

**SOURCE & POPULATION**

DSHS Integrated Client Database. Youth in foster care ever in SFY, and all youth with Medicaid coverage in SFY.



# Behavioral Health Treatment Needs and Outcomes among Foster Care Children in Washington State

OUTCOME 1

## Treatment Penetration for Youth with Mental Health Tx Needs

**INDICATOR**

Proportion of children and youth with mental health treatment needs who receive mental health treatment services

**IN FOSTER CARE:**

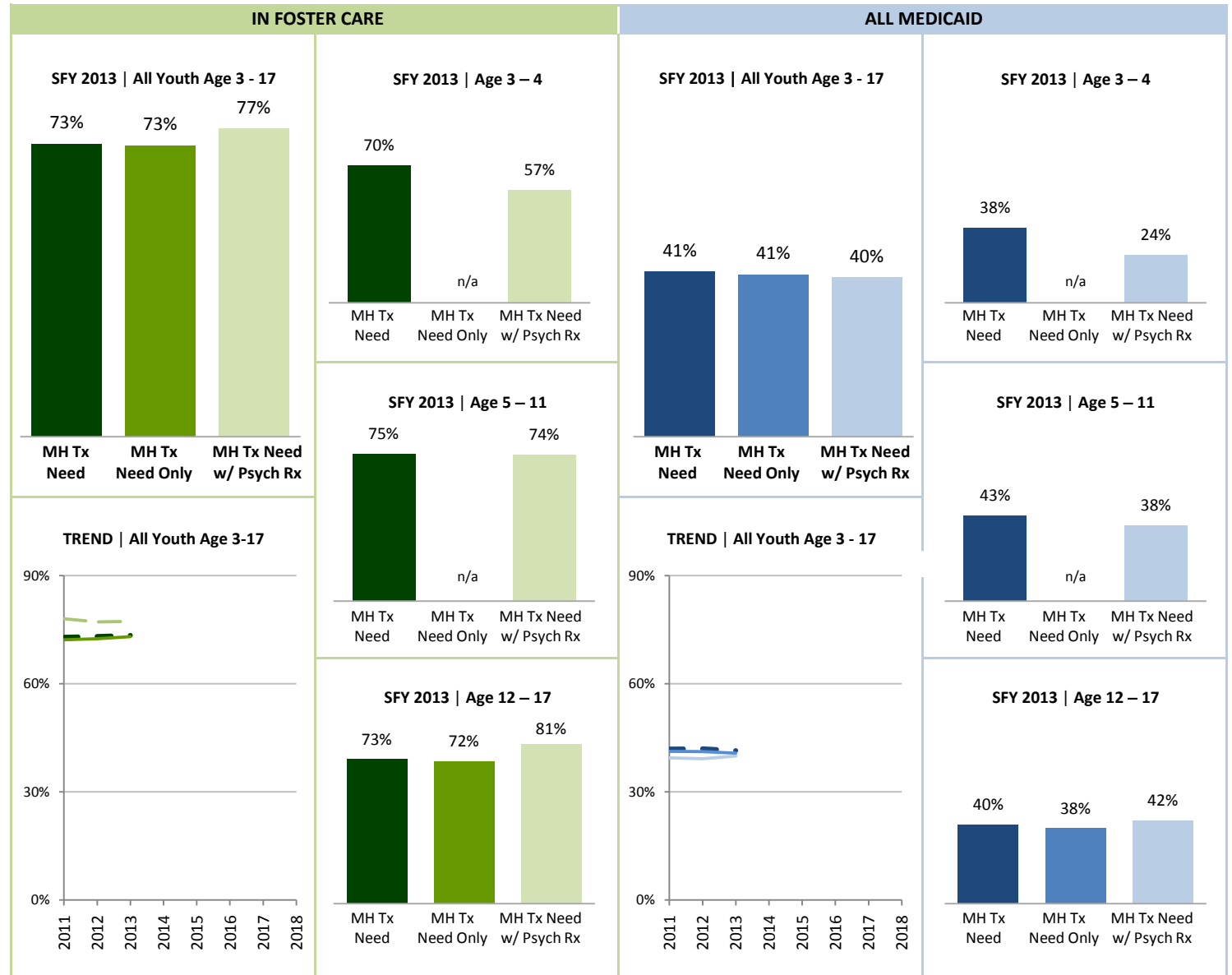
- █ MH Tx Need
- █ MH Tx Need Only
- █ MH Tx Need w/ Psych Rx

**ALL MEDICAID:**

- █ MH Tx Need
- █ MH Tx Need Only
- █ MH Tx Need w/ Psych Rx

**SOURCE & POPULATION**

DSHS Integrated Client Database. Youth in foster care ever in SFY, and all youth with Medicaid coverage in SFY.



SUPPORTING TABLES | **1 Treatment Penetration for Youth with Mental Health Treatment Needs**

	IN FOSTER CARE								ALL MEDICAID							
STATE FISCAL YEAR																
ALL YOUTH: 3 - 17 YEARS	2011	2012	2013	2014	2015	2016	2017	2018	2011	2012	2013	2014	2015	2016	2017	2018
<b>MH Tx need, percent</b>	<b>73%</b>	<b>73%</b>	<b>73%</b>						<b>42%</b>	<b>42%</b>	<b>41%</b>					
Persons receiving MH Tx	5,070	4,872	4,876						45,711	48,043	49,109					
Total number of persons	6,957	6,663	6,640						109,116	114,499	118,591					
<b>MH Tx need only (no COD), percent</b>	<b>72%</b>	<b>72%</b>	<b>73%</b>						<b>41%</b>	<b>41%</b>	<b>41%</b>					
Persons receiving MH Tx	4,484	4,313	4,297						42,154	44,200	45,226					
Total number of persons	6,215	5,955	5,881						102,295	107,380	111,182					
<b>MH Tx need with Psych Rx, percent</b>	<b>78%</b>	<b>77%</b>	<b>77%</b>						<b>39%</b>	<b>39%</b>	<b>40%</b>					
Persons receiving MH Tx	2,037	1,925	1,822						17,919	17,773	17,823					
Total number of persons	2,611	2,496	2,357						45,456	45,349	44,630					
<b>BY AGE: 3 - 4 YEARS</b>																
<b>MH Tx need, percent</b>	<b>67%</b>	<b>67%</b>	<b>70%</b>						<b>38%</b>	<b>36%</b>	<b>38%</b>					
Persons receiving MH Tx	549	593	632						3,219	3,325	3,415					
Total number of persons	821	890	906						8,536	9,199	8,952					
<b>MH Tx need with Psych Rx, percent</b>	<b>58%</b>	<b>47%</b>	<b>57%</b>						<b>23%</b>	<b>20%</b>	<b>24%</b>					
Persons receiving MH Tx	58	45	55						362	305	302					
Total number of persons	100	95	96						1,541	1,524	1,246					
<b>BY AGE: 5 - 11 YEARS</b>																
<b>MH Tx need, percent</b>	<b>73%</b>	<b>74%</b>	<b>75%</b>						<b>44%</b>	<b>44%</b>	<b>43%</b>					
Persons receiving MH Tx	2,273	2,204	2,282						21,560	22,459	23,216					
Total number of persons	3,110	2,970	3,055						49,277	51,453	53,465					
<b>MH Tx need with Psych Rx, percent</b>	<b>74%</b>	<b>75%</b>	<b>74%</b>						<b>38%</b>	<b>38%</b>	<b>38%</b>					
Persons receiving MH Tx	768	742	702						7,838	7,789	7,809					
Total number of persons	1,035	984	946						20,786	20,751	20,303					
<b>BY AGE: 12 - 17 YEARS</b>																
<b>MH Tx need, percent</b>	<b>74%</b>	<b>74%</b>	<b>73%</b>						<b>41%</b>	<b>41%</b>	<b>40%</b>					
Persons receiving MH Tx	2,248	2,075	1,962						20,932	22,259	22,478					
Total number of persons	3,026	2,803	2,679						51,303	53,847	56,174					
<b>MH Tx need only (no COD), percent</b>	<b>73%</b>	<b>72%</b>	<b>72%</b>						<b>39%</b>	<b>39%</b>	<b>38%</b>					
Persons receiving MH Tx	1,662	1,516	1,383						17,375	18,416	18,595					
Total number of persons	2,284	2,095	1,920						44,482	46,728	48,765					
<b>MH Tx need with Psych Rx, percent</b>	<b>82%</b>	<b>80%</b>	<b>81%</b>						<b>42%</b>	<b>42%</b>	<b>42%</b>					
Persons receiving MH Tx	1,211	1,138	1,065						9,719	9,679	9,712					
Total number of persons	1,476	1,417	1,315						23,129	23,074	23,081					

NOTES

Denominator for percentages is number of persons with indications of mental health treatment need in the current or past SFY. Numerator is number of persons receiving outpatient mental health services in the current SFY. Outpatient mental health services include most modalities of outpatient mental health services delivered through DBHR (excludes, for example, case management), as well as Behavioral Rehabilitation Services from the Children's Administration, and outpatient mental health services delivered through the Health Care Authority or tribal authorities. Note that tabulation of mental health services received in this measure reflects a one-year window, whereas the mental health services component of indication of mental health needs (see 0.4) reflects a two-year window. The mental health treatment need only (no COD) group is shown only for age 12-17, the earliest age at which SUD treatment need is measured. See next page for youth 12-17 with COD.





# Behavioral Health Treatment Needs and Outcomes among Foster Care Children in Washington State

OUTCOME 2

## Treatment Penetration for Youth with SUD and COD Tx Needs

**INDICATOR**

Proportion of children and youth with SUD and COD treatment needs who receive appropriate behavioral health treatment services

**IN FOSTER CARE:**

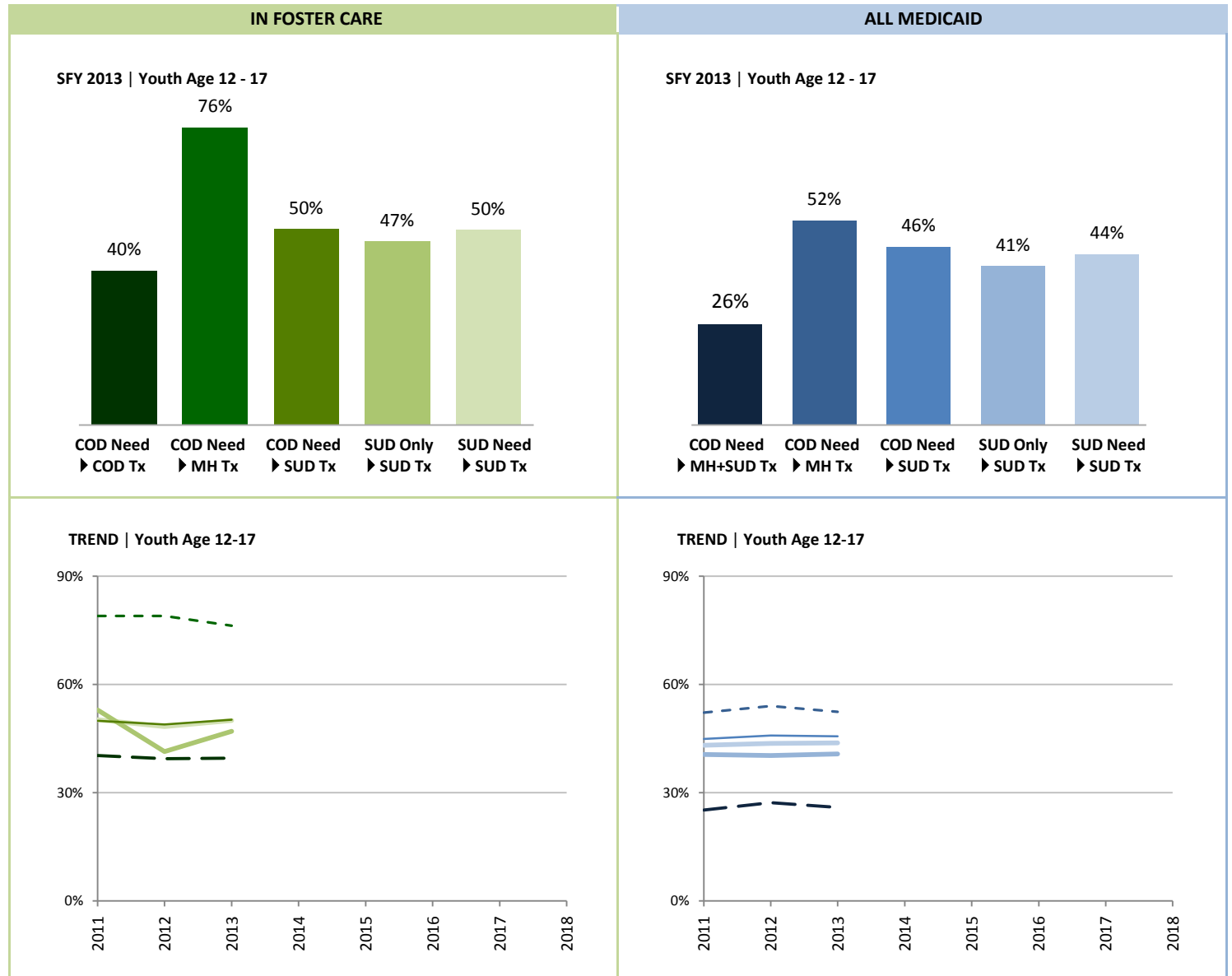
- COD Need, MH+SUD Tx
- - - COD Need, MH Tx
- COD Need, SUD Tx
- SUD Need Only, SUD Tx
- SUD Need, SUD Tx

**ALL MEDICAID:**

- COD Need, MH+SUD Tx
- - - COD Need, MH Tx
- COD Need, SUD Tx
- SUD Need Only, SUD Tx
- SUD Need, SUD Tx

**SOURCE & POPULATION**

DSHS Integrated Client Database. Youth in foster care ever in SFY, and all youth with Medicaid coverage in SFY.



## SUPPORTING TABLES | 2 Treatment Penetration for Youth with SUD and COD Treatment Needs

	IN FOSTER CARE								ALL MEDICAID							
STATE FISCAL YEAR																
YOUTH 12 - 17 YEARS	2011	2012	2013	2014	2015	2016	2017	2018	2011	2012	2013	2014	2015	2016	2017	2018
<b>SUD Tx need: SUD Tx percent</b>	<b>50%</b>	<b>48%</b>	<b>50%</b>						<b>43%</b>	<b>44%</b>	<b>44%</b>					
Persons receiving SUD Tx	416	370	412						4,987	5,158	5,254					
Persons with SUD Tx need	829	766	825						11,566	11,833	12,011					
<b>SUD Tx need only (no COD): SUD Tx</b>	<b>53%</b>	<b>41%</b>	<b>47%</b>						<b>41%</b>	<b>40%</b>	<b>41%</b>					
Persons receiving SUD Tx	46	24	31						1,926	1,899	1,874					
Persons with SUD Tx need only	87	58	66						4,745	4,714	4,602					
<b>COD Tx Need: SUD Tx percent</b>	<b>50%</b>	<b>49%</b>	<b>50%</b>						<b>45%</b>	<b>46%</b>	<b>46%</b>					
Persons receiving SUD Tx	370	346	381						3,061	3,259	3,380					
Persons with COD Tx needs	742	708	759						6,821	7,119	7,409					
<b>COD Tx Need: MH Tx percent</b>	<b>79%</b>	<b>79%</b>	<b>76%</b>						<b>52%</b>	<b>54%</b>	<b>52%</b>					
Persons receiving MH Tx	586	559	579						3,557	3,843	3,883					
Persons with COD Tx needs	742	708	759						6,821	7,119	7,409					
<b>COD Tx Need: MH+SUD Tx percent</b>	<b>40%</b>	<b>39%</b>	<b>40%</b>						<b>25%</b>	<b>27%</b>	<b>26%</b>					
Persons receiving both MH+SUD Tx	299	279	300						1,717	1,938	1,917					
Persons with COD Tx needs	742	708	759						6,821	7,119	7,409					

### NOTES

Denominator for percentages is number of persons with indications of substance use disorder (SUD) treatment need in the current or past SFY, or number of persons with co-occurring (COD) mental health and substance use treatment needs. Numerator is number of persons receiving substance use disorder services in the current SFY, outpatient mental health disorder services in the current SFY, or both. Substance use disorder services include inpatient services, outpatient services, opiate substitution, and case management. Outpatient mental health services include most modalities of outpatient mental health services delivered through DBHR (excludes, for example, case management), as well as Behavioral Rehabilitation Services from the Children's Administration, and outpatient mental health services delivered through the Health Care Authority or tribal authorities. As substance use disorder treatment need is rare before adolescence, SUD and COD are unmeasured for youth under age 12. As such, younger children are excluded from this outcome measure.



# Behavioral Health Treatment Needs and Outcomes among Foster Care Children in Washington State

OUTCOME 3

## Mental Health Crisis Services

**INDICATOR**

Proportion of children and youth who have received at least one mental health crisis service in SFY.

**IN FOSTER CARE:**

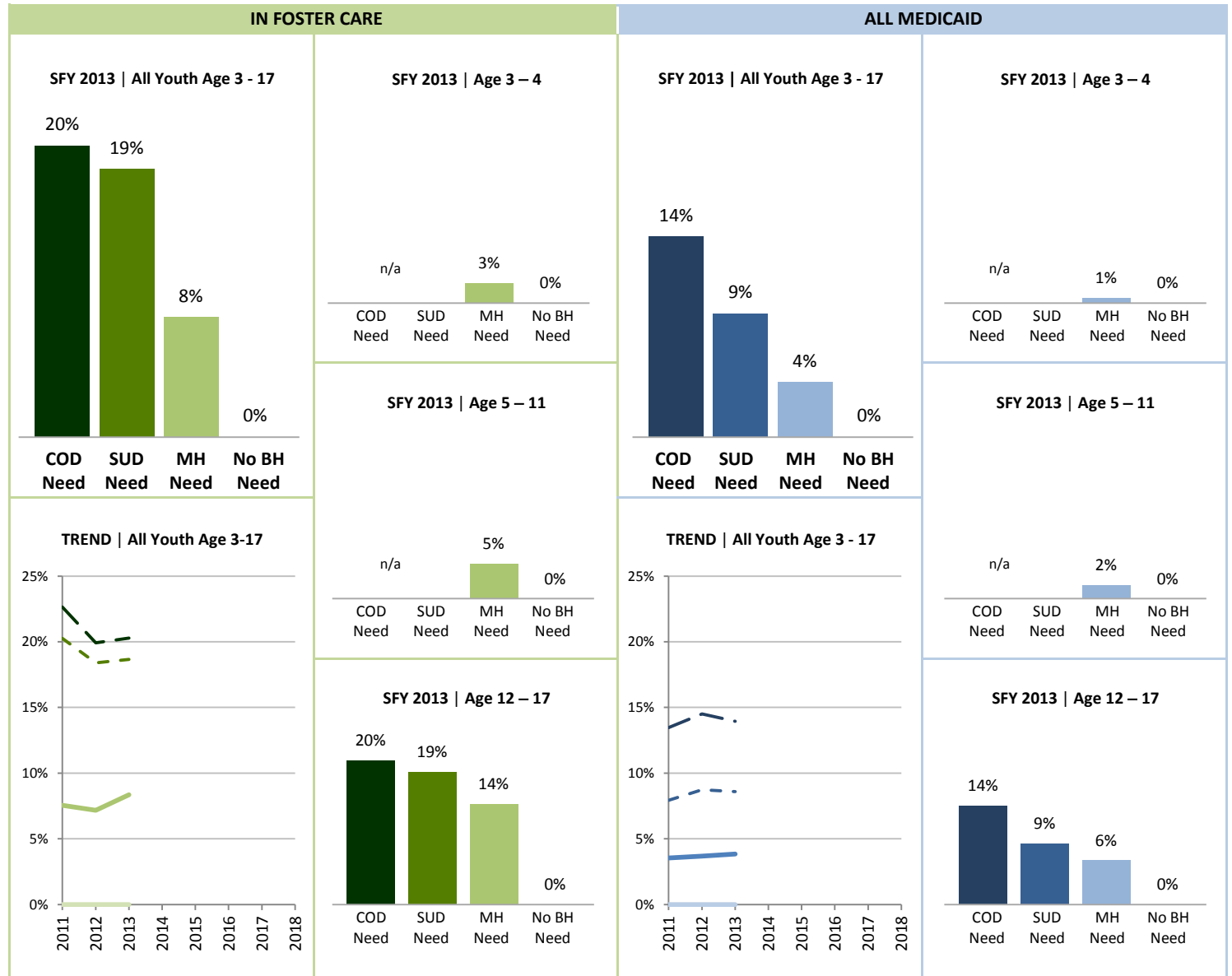
- COD Tx Need
- - - SUD Tx Need
- MH Tx Need
- No Known BH Tx Need

**ALL MEDICAID:**

- COD Tx Need
- - - SUD Tx Need
- MH Tx Need
- No Known BH Tx Need

**SOURCE & POPULATION**

DSHS Integrated Client Database. Youth in foster care ever in SFY, and all youth with Medicaid coverage in SFY.



SUPPORTING TABLES | 3 Mental Health Crisis Services

	IN FOSTER CARE								ALL MEDICAID							
STATE FISCAL YEAR																
ALL YOUTH: 3 - 17 YEARS	2011	2012	2013	2014	2015	2016	2017	2018	2011	2012	2013	2014	2015	2016	2017	2018
<b>No known BH Tx need, percent</b>	<b>0%</b>	<b>0%</b>	<b>0%</b>						<b>0%</b>	<b>0%</b>	<b>0%</b>					
Number of persons with MH crisis	0	0	0						0	0	0					
Total number of persons	2,993	2,938	3,034						468,936	481,748	488,050					
<b>MH Tx need, percent</b>	<b>8%</b>	<b>7%</b>	<b>8%</b>						<b>4%</b>	<b>4%</b>	<b>4%</b>					
Number of persons with MH crisis	525	478	555						3,867	4,210	4,549					
Total number of persons	6,957	6,663	6,640						109,116	114,499	118,591					
<b>SUD Tx need, percent</b>	<b>20%</b>	<b>18%</b>	<b>19%</b>						<b>8%</b>	<b>9%</b>	<b>9%</b>					
Number of persons with MH crisis	168	141	154						918	1,033	1,033					
Total number of persons	829	766	825						11,566	11,833	12,011					
<b>Co-occurring Tx need, percent</b>	<b>23%</b>	<b>20%</b>	<b>20%</b>						<b>13%</b>	<b>15%</b>	<b>14%</b>					
Number of persons with MH crisis	168	141	154						918	1,033	1,033					
Total number of persons	742	708	759						6,821	7,119	7,409					
<b>BY AGE: 3 - 4 YEARS</b>																
<b>No known BH Tx need, percent</b>	<b>0%</b>	<b>0%</b>	<b>0%</b>						<b>0%</b>	<b>0%</b>	<b>0%</b>					
Number of persons with MH crisis	0	0	0						0	0	0					
Total number of persons	1,133	1,152	1,184						88,781	92,059	91,512					
<b>MH Tx need, percent</b>	<b>1%</b>	<b>1%</b>	<b>3%</b>						<b>0%</b>	<b>0%</b>	<b>1%</b>					
Number of persons with MH crisis	10	6	26						37	41	65					
Total number of persons	821	890	906						8,536	9,199	8,952					
<b>BY AGE: 5 - 11 YEARS</b>																
<b>No known BH Tx need, percent</b>	<b>0%</b>	<b>0%</b>	<b>0%</b>						<b>0%</b>	<b>0%</b>	<b>0%</b>					
Number of persons with MH crisis	0	0	0						0	0	0					
Total number of persons	1,243	1,206	1,314						235,359	242,114	247,519					
<b>MH Tx need, percent</b>	<b>4%</b>	<b>4%</b>	<b>5%</b>						<b>2%</b>	<b>2%</b>	<b>2%</b>					
Number of persons with MH crisis	114	113	151						792	918	996					
Total number of persons	3,110	2,970	3,055						49,277	51,453	53,465					
<b>BY AGE: 12 - 17 YEARS</b>																
<b>No known BH Tx need, percent</b>	<b>0%</b>	<b>0%</b>	<b>0%</b>						<b>0%</b>	<b>0%</b>	<b>0%</b>					
Number of persons with MH crisis	0	0	0						0	0	0					
Total number of persons	617	580	536						144,796	147,575	149,019					
<b>MH Tx need, percent</b>	<b>13%</b>	<b>13%</b>	<b>14%</b>						<b>6%</b>	<b>6%</b>	<b>6%</b>					
Number of persons with MH crisis	401	359	378						3,038	3,251	3,488					
Total number of persons	3,026	2,803	2,679						51,303	53,847	56,174					
<b>SUD Tx need, percent</b>	<b>20%</b>	<b>18%</b>	<b>19%</b>						<b>8%</b>	<b>9%</b>	<b>9%</b>					
Number of persons with MH crisis	168	141	154						918	1,033	1,033					
Total number of persons	829	766	825						11,566	11,833	12,011					
<b>Co-occurring Tx need, percent</b>	<b>23%</b>	<b>20%</b>	<b>20%</b>						<b>13%</b>	<b>15%</b>	<b>14%</b>					
Number of persons with MH crisis	168	141	154						918	1,033	1,033					
Total number of persons	742	708	759						6,821	7,119	7,409					



# Behavioral Health Treatment Needs and Outcomes among Foster Care Children in Washington State

OUTCOME 4

## Mental Health Inpatient Services

### INDICATOR

Proportion of youth with any inpatient MH services in SFY

### IN FOSTER CARE:

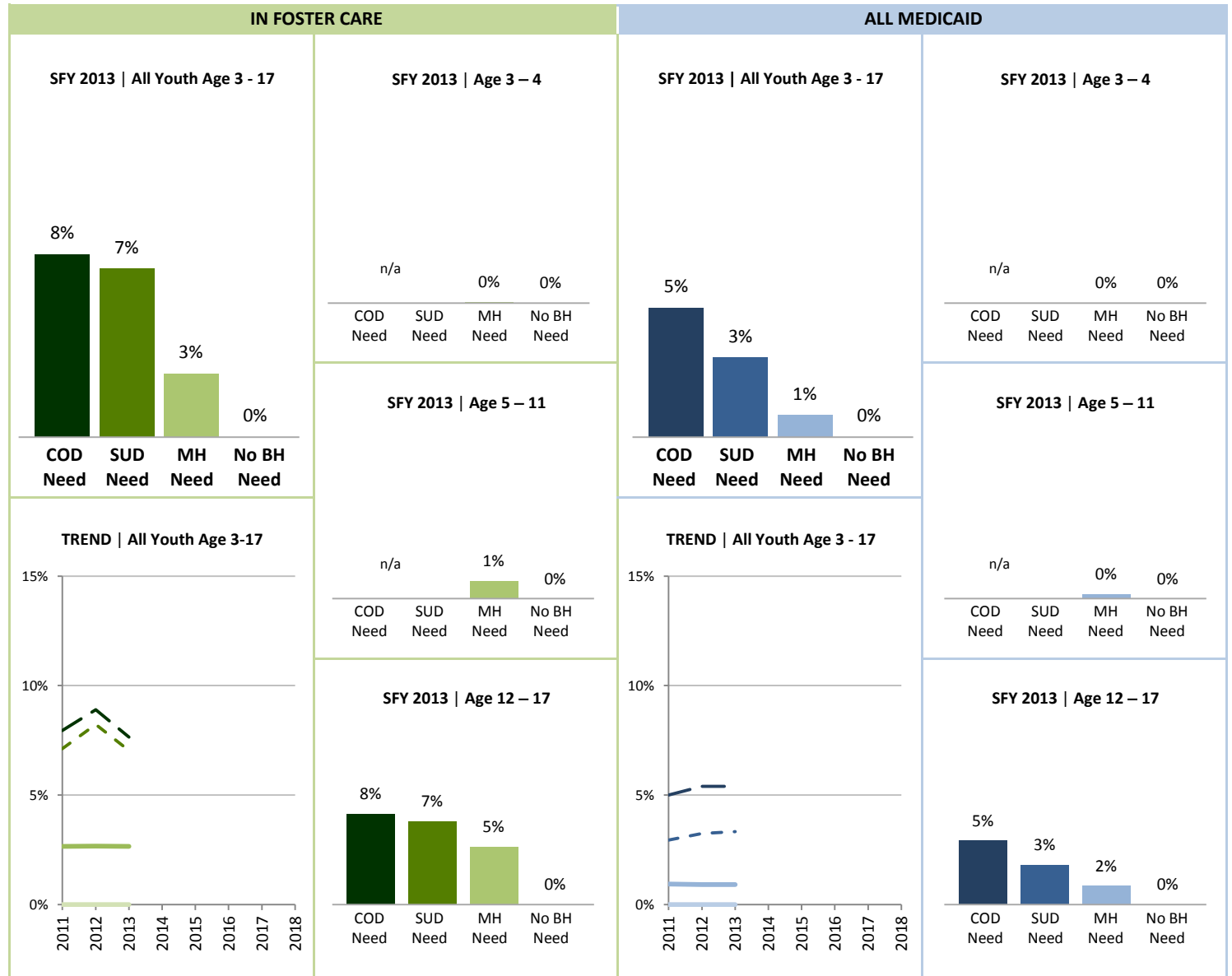
- COD Tx Need
- - - SUD Tx Need
- MH Tx Need
- No Known BH Tx Need

### ALL MEDICAID:

- COD Tx Need
- - - SUD Tx Need
- MH Tx Need
- No Known BH Tx Need

### SOURCE & POPULATION

DSHS Integrated Client Database. Youth in foster care ever in SFY, and all youth with Medicaid coverage in SFY.



SUPPORTING TABLES | 4 Mental Health Inpatient Services

	IN FOSTER CARE								ALL MEDICAID							
STATE FISCAL YEAR																
ALL YOUTH: 3 - 17 YEARS	2011	2012	2013	2014	2015	2016	2017	2018	2011	2012	2013	2014	2015	2016	2017	2018
<b>No known BH Tx need, percent</b>	<b>0%</b>	<b>0%</b>	<b>0%</b>						<b>0%</b>	<b>0%</b>	<b>0%</b>					
Number of persons with MH IP	0	0	0						0	0	0					
Total number of persons	2,993	2,938	3,034						468,936	481,748	488,050					
<b>MH Tx need, percent</b>	<b>3%</b>	<b>3%</b>	<b>3%</b>						<b>1%</b>	<b>1%</b>	<b>1%</b>					
Number of persons with MH IP	185	178	176						1,015	1,039	1,079					
Total number of persons	6,957	6,663	6,640						109,116	114,499	118,591					
<b>SUD Tx need, percent</b>	<b>7%</b>	<b>8%</b>	<b>7%</b>						<b>3%</b>	<b>3%</b>	<b>3%</b>					
Number of persons with MH IP	59	63	58						341	384	400					
Total number of persons	829	766	825						11,566	11,833	12,011					
<b>Co-occurring Tx need, percent</b>	<b>8%</b>	<b>9%</b>	<b>8%</b>						<b>5%</b>	<b>5%</b>	<b>5%</b>					
Number of persons with MH IP	59	63	58						341	384	400					
Total number of persons	742	708	759						6,821	7,119	7,409					
<b>BY AGE: 3 - 4 YEARS</b>																
<b>No known BH Tx need, percent</b>	<b>0%</b>	<b>0%</b>	<b>0%</b>						<b>0%</b>	<b>0%</b>	<b>0%</b>					
Number of persons with MH IP	0	0	0						0	0	0					
Total number of persons	1,133	1,152	1,184						88,781	92,059	91,512					
<b>MH Tx need, percent</b>	<b>0%</b>	<b>0%</b>	<b>0%</b>						<b>0%</b>	<b>0%</b>	<b>0%</b>					
Number of persons with MH IP	0	2	1						3	5	3					
Total number of persons	821	890	906						8,536	9,199	8,952					
<b>BY AGE: 5 - 11 YEARS</b>																
<b>No known BH Tx need, percent</b>	<b>0%</b>	<b>0%</b>	<b>0%</b>						<b>0%</b>	<b>0%</b>	<b>0%</b>					
Number of persons with MH IP	0	0	0						0	0	0					
Total number of persons	1,243	1,206	1,314						235,359	242,114	247,519					
<b>MH Tx need, percent</b>	<b>2%</b>	<b>2%</b>	<b>1%</b>						<b>0%</b>	<b>0%</b>	<b>0%</b>					
Number of persons with MH IP	53	46	45						203	180	190					
Total number of persons	3,110	2,970	3,055						49,277	51,453	53,465					
<b>BY AGE: 12 - 17 YEARS</b>																
<b>No known BH Tx need, percent</b>	<b>0%</b>	<b>0%</b>	<b>0%</b>						<b>0%</b>	<b>0%</b>	<b>0%</b>					
Number of persons with MH IP	0	0	0						0	0	0					
Total number of persons	617	580	536						144,796	147,575	149,019					
<b>MH Tx need, percent</b>	<b>4%</b>	<b>5%</b>	<b>5%</b>						<b>2%</b>	<b>2%</b>	<b>2%</b>					
Number of persons with MH IP	132	130	130						809	854	886					
Total number of persons	3,026	2,803	2,679						51,303	53,847	56,174					
<b>SUD Tx need, percent</b>	<b>7%</b>	<b>8%</b>	<b>7%</b>						<b>3%</b>	<b>3%</b>	<b>3%</b>					
Number of persons with MH IP	59	63	58						341	384	400					
Total number of persons	829	766	825						11,566	11,833	12,011					
<b>Co-occurring Tx need, percent</b>	<b>8%</b>	<b>9%</b>	<b>8%</b>						<b>5%</b>	<b>5%</b>	<b>5%</b>					
Number of persons with MH IP	59	63	58						341	384	400					
Total number of persons	742	708	759						6,821	7,119	7,409					

NOTE: Mental health inpatient services (MH IP) include community psychiatric, Children's Long-term Inpatient (CLIP), Child Study and Treatment Center (CSTC), and State Hospital.



# Behavioral Health Treatment Needs and Outcomes among Foster Care Children in Washington State

OUTCOME 5

## Psychotropic Polypharmacy

**INDICATOR**

Proportion of youth who filled four or more psychotropic prescription medications in at least one month of SFY

**IN FOSTER CARE:**

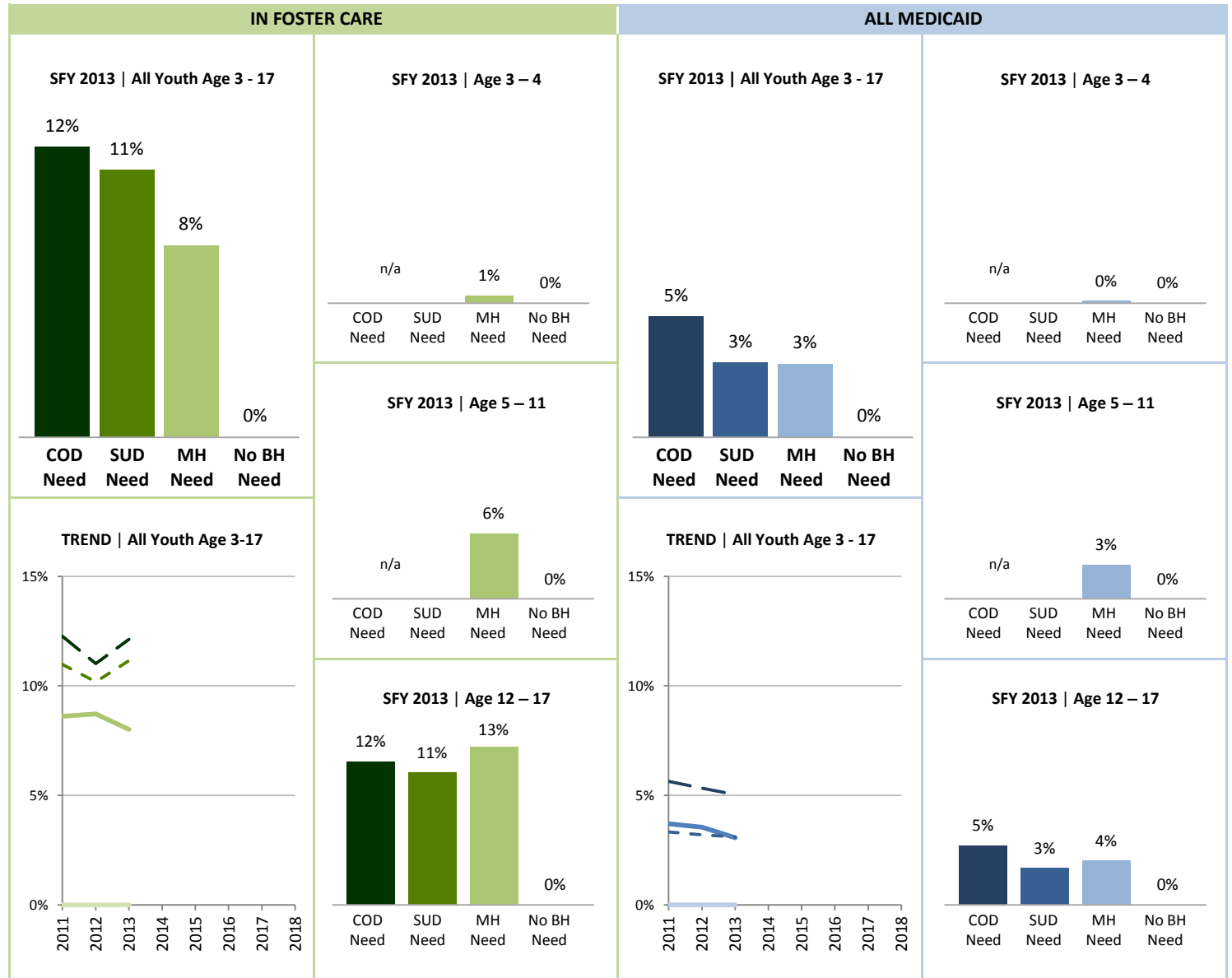
- █ COD Tx Need
- - - SUD Tx Need
- █ MH Tx Need
- █ No Known BH Tx Need

**ALL MEDICAID:**

- █ COD Tx Need
- - - SUD Tx Need
- █ MH Tx Need
- █ No Known BH Tx Need

**SOURCE & POPULATION**

DSHS Integrated Client Database. Youth in foster care ever in SFY, and all youth with Medicaid coverage in SFY.



SUPPORTING TABLES | 5 Psychotropic Polypharmacy

IN FOSTER CARE

ALL MEDICAID

STATE FISCAL YEAR

ALL YOUTH: 3 - 17 YEARS	2011	2012	2013	2014	2015	2016	2017	2018	2011	2012	2013	2014	2015	2016	2017	2018
<b>No known BH Tx need, percent</b>	<b>0%</b>	<b>0%</b>	<b>0%</b>						<b>0%</b>	<b>0%</b>	<b>0%</b>					
Number of persons w/psych. poly.	0	0	0						0	0	0					
Total number of persons	2,993	2,938	3,034						468,936	481,748	488,050					
<b>MH Tx need, percent</b>	<b>9%</b>	<b>9%</b>	<b>8%</b>						<b>4%</b>	<b>4%</b>	<b>3%</b>					
Number of persons w/psych. poly.	599	581	532						4,044	4,055	3,640					
Total number of persons	6,957	6,663	6,640						109,116	114,499	118,591					
<b>SUD Tx need, percent</b>	<b>11%</b>	<b>10%</b>	<b>11%</b>						<b>3%</b>	<b>3%</b>	<b>3%</b>					
Number of persons w/psych. poly.	91	78	92						385	379	373					
Total number of persons	829	766	825						11,566	11,833	12,011					
<b>Co-occurring Tx need, percent</b>	<b>12%</b>	<b>11%</b>	<b>12%</b>						<b>6%</b>	<b>5%</b>	<b>5%</b>					
Number of persons w/psych. poly.	91	78	92						385	379	373					
Total number of persons	742	708	759						6,821	7,119	7,409					
<b>BY AGE: 3 - 4 YEARS</b>																
<b>No known BH Tx need, percent</b>	<b>0%</b>	<b>0%</b>	<b>0%</b>						<b>0%</b>	<b>0%</b>	<b>0%</b>					
Number of persons w/psych. poly.	0	0	0						0	0	0					
Total number of persons	1,133	1,152	1,184						88,781	92,059	91,512					
<b>MH Tx need, percent</b>	<b>0%</b>	<b>0%</b>	<b>1%</b>						<b>0%</b>	<b>0%</b>	<b>0%</b>					
Number of persons w/psych. poly.	4	2	6						24	20	18					
Total number of persons	821	890	906						8,536	9,199	8,952					
<b>BY AGE: 5 - 11 YEARS</b>																
<b>No known BH Tx need, percent</b>	<b>0%</b>	<b>0%</b>	<b>0%</b>						<b>0%</b>	<b>0%</b>	<b>0%</b>					
Number of persons w/psych. poly.	0	0	0						0	0	0					
Total number of persons	1,243	1,206	1,314						235,359	242,114	247,519					
<b>MH Tx need, percent</b>	<b>6%</b>	<b>6%</b>	<b>6%</b>						<b>4%</b>	<b>3%</b>	<b>3%</b>					
Number of persons w/psych. poly.	197	189	169						1,768	1,747	1,522					
Total number of persons	3,110	2,970	3,055						49,277	51,453	53,465					
<b>BY AGE: 12 - 17 YEARS</b>																
<b>No known BH Tx need, percent</b>	<b>0%</b>	<b>0%</b>	<b>0%</b>						<b>0%</b>	<b>0%</b>	<b>0%</b>					
Number of persons w/psych. poly.	0	0	0						0	0	0					
Total number of persons	617	580	536						144,796	147,575	149,019					
<b>MH Tx need, percent</b>	<b>13%</b>	<b>14%</b>	<b>13%</b>						<b>4%</b>	<b>4%</b>	<b>4%</b>					
Number of persons w/psych. poly.	398	390	357						2,252	2,288	2,100					
Total number of persons	3,026	2,803	2,679						51,303	53,847	56,174					
<b>SUD Tx need, percent</b>	<b>11%</b>	<b>10%</b>	<b>11%</b>						<b>3%</b>	<b>3%</b>	<b>3%</b>					
Number of persons w/psych. poly.	91	78	92						385	379	373					
Total number of persons	829	766	825						11,566	11,833	12,011					
<b>Co-occurring Tx need, percent</b>	<b>12%</b>	<b>11%</b>	<b>12%</b>						<b>6%</b>	<b>5%</b>	<b>5%</b>					
Number of persons w/psych. poly.	91	78	92						385	379	373					
Total number of persons	742	708	759						6,821	7,119	7,409					





# Behavioral Health Treatment Needs and Outcomes among Foster Care Children in Washington State

OUTCOME 6

## Involvement in Criminal Justice System

**INDICATOR**

Proportion of youth age 12-17 who have any criminal justice involvement in SFY, including arrests and convictions

**IN FOSTER CARE:**

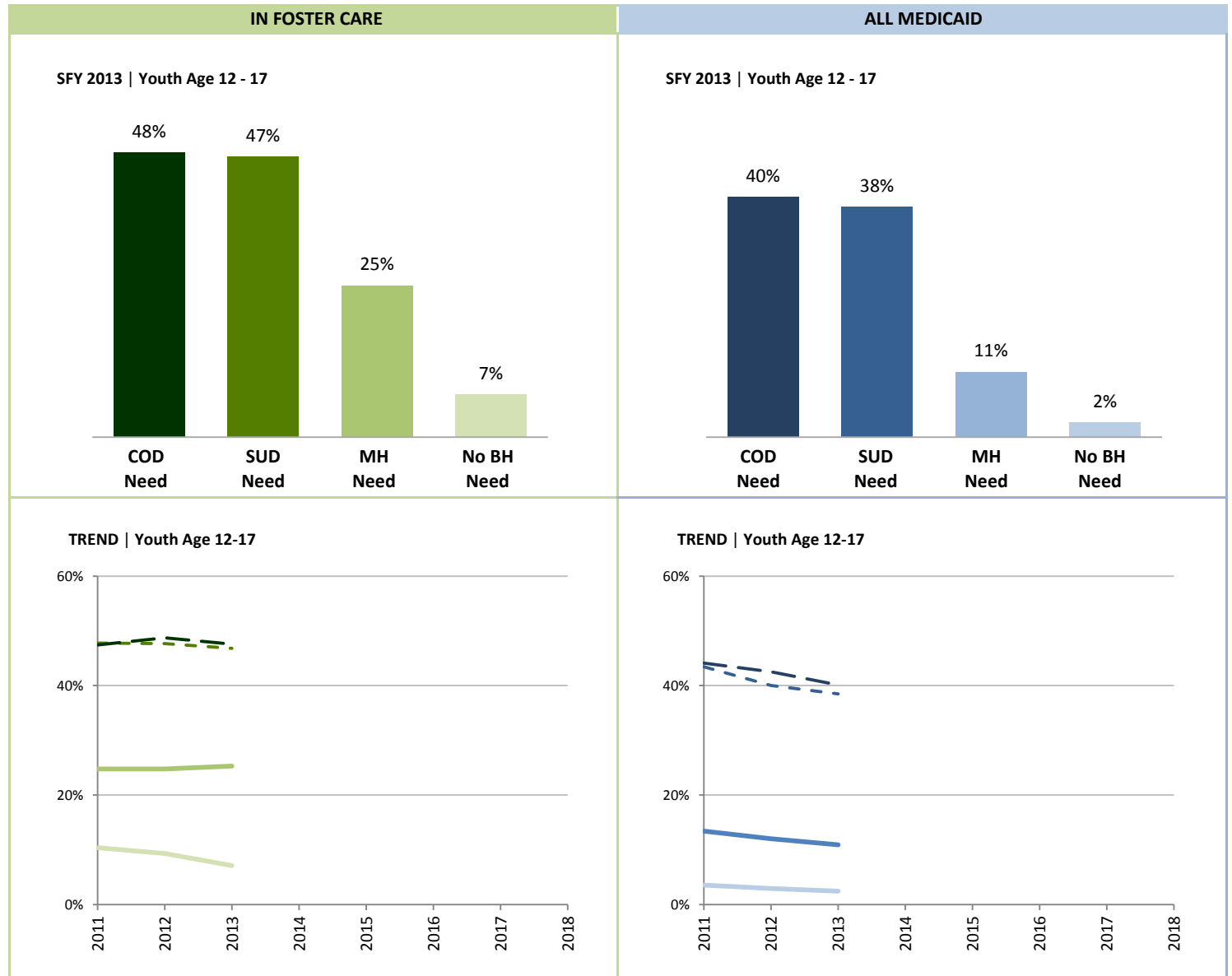
- COD Tx Need
- - - SUD Tx Need
- MH Tx Need
- No Known BH Tx Need

**ALL MEDICAID:**

- COD Tx Need
- - - SUD Tx Need
- MH Tx Need
- No Known BH Tx Need

**SOURCE & POPULATION**

DSHS Integrated Client Database. Youth in foster care ever in SFY, and all youth with Medicaid coverage in SFY.



SUPPORTING TABLES | 6 Involvement in Criminal Justice System

IN FOSTER CARE

ALL MEDICAID

STATE FISCAL YEAR

YOUTH 12 - 17 YEARS	2011	2012	2013	2014	2015	2016	2017	2018	2011	2012	2013	2014	2015	2016	2017	2018
<b>No known BH Tx need, percent</b>	<b>10%</b>	<b>9%</b>	<b>7%</b>						<b>4%</b>	<b>3%</b>	<b>2%</b>					
Number of persons with CJ	64	54	38						5,129	4,310	3,676					
Total number of persons	617	580	536						144,796	147,575	149,019					
<b>MH Tx need, percent</b>	<b>25%</b>	<b>25%</b>	<b>25%</b>						<b>13%</b>	<b>12%</b>	<b>11%</b>					
Number of persons with CJ	750	694	678						6,892	6,467	6,117					
Total number of persons	3,026	2,803	2,679						51,303	53,847	56,174					
<b>SUD Tx need, percent</b>	<b>48%</b>	<b>48%</b>	<b>47%</b>						<b>43%</b>	<b>40%</b>	<b>38%</b>					
Number of persons with CJ	396	365	386						5,022	4,737	4,621					
Total number of persons	829	766	825						11,566	11,833	12,011					
<b>Co-occurring Tx need, percent</b>	<b>47%</b>	<b>49%</b>	<b>48%</b>						<b>44%</b>	<b>43%</b>	<b>40%</b>					
Number of persons with CJ	352	345	361						3,008	3,026	2,972					
Total number of persons	742	708	759						6,821	7,119	7,409					

NOTES

As criminal justice involvement is rare before adolescence, it is unmeasured for youth under age 12. As such, younger children are excluded from this outcome measure.



# Behavioral Health Treatment Needs and Outcomes among Foster Care Children in Washington State

OUTCOME 7

## Emergency Room Utilization

**INDICATOR**

Number of emergency department visits in SFY per 1,000 Medicaid (or SCHIP) member months.

**IN FOSTER CARE:**

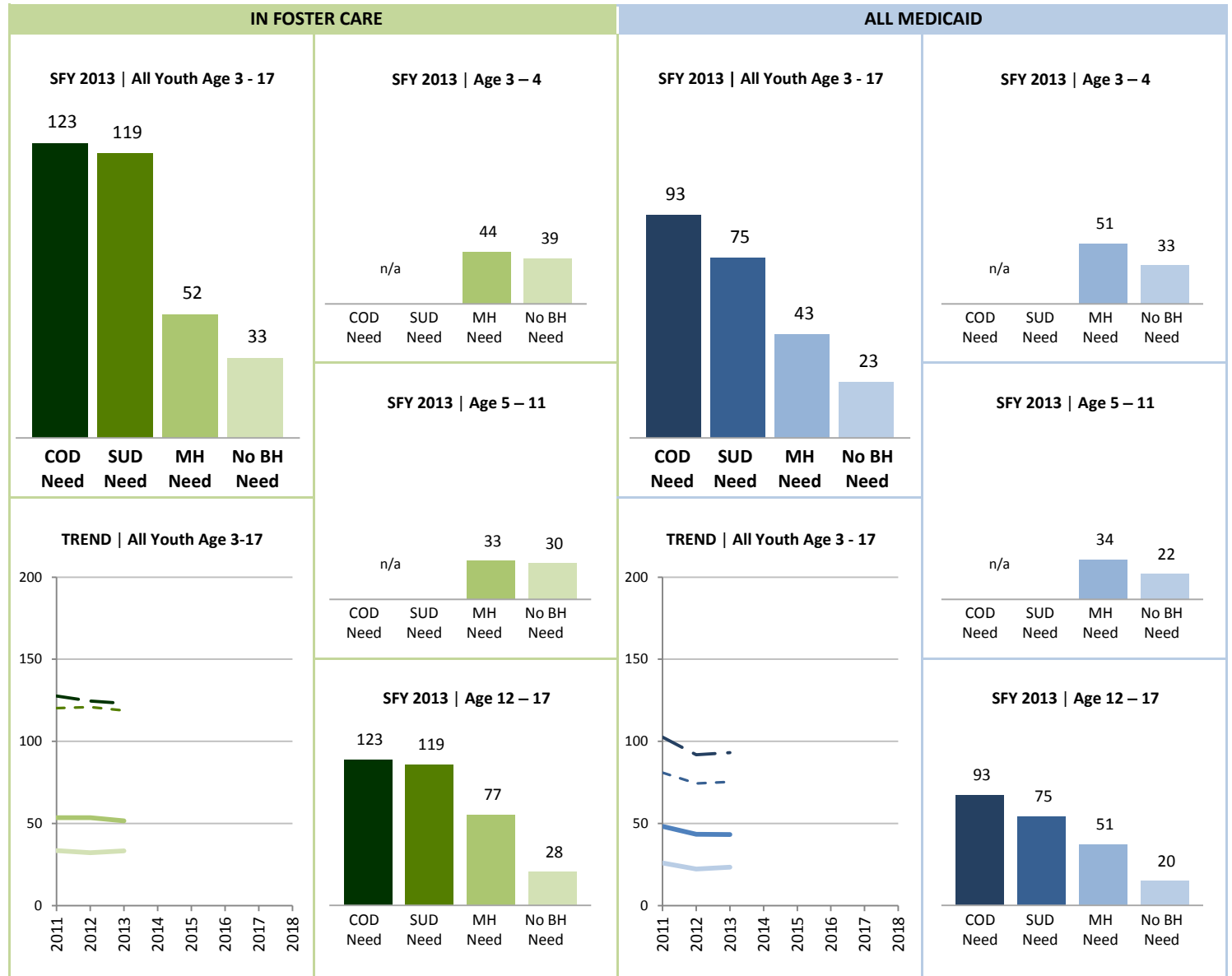
- COD Tx Need
- SUD Tx Need
- MH Tx Need
- No Known BH Tx Need

**ALL MEDICAID:**

- COD Tx Need
- SUD Tx Need
- MH Tx Need
- No Known BH Tx Need

**SOURCE & POPULATION**

DSHS Integrated Client Database. Youth in foster care ever in SFY, and all youth with Medicaid coverage in SFY.



SUPPORTING TABLES | 7 Emergency Room Utilization

	IN FOSTER CARE								ALL MEDICAID							
STATE FISCAL YEAR																
ALL YOUTH: 3 - 17 YEARS	2011	2012	2013	2014	2015	2016	2017	2018	2011	2012	2013	2014	2015	2016	2017	2018
<b>No known BH Tx need, rate</b>	<b>33</b>	<b>32</b>	<b>33</b>						<b>26</b>	<b>22</b>	<b>23</b>					
Number of persons	2,993	2,938	3,034						468,936	481,748	488,050					
<b>MH Tx need, rate</b>	<b>53</b>	<b>54</b>	<b>52</b>						<b>48</b>	<b>43</b>	<b>43</b>					
Number of persons	6,957	6,663	6,640						109,116	114,499	118,591					
<b>SUD Tx need, rate</b>	<b>120</b>	<b>121</b>	<b>119</b>						<b>81</b>	<b>74</b>	<b>75</b>					
Number of persons	829	766	825						11,566	11,833	12,011					
<b>Co-occurring Tx need, rate</b>	<b>128</b>	<b>125</b>	<b>123</b>						<b>103</b>	<b>92</b>	<b>93</b>					
Number of persons	742	708	759						6,821	7,119	7,409					
<b>BY AGE: 3 - 4 YEARS</b>																
<b>No known BH Tx need, rate</b>	<b>36</b>	<b>35</b>	<b>39</b>						<b>35</b>	<b>29</b>	<b>33</b>					
Number of persons	1,133	1,152	1,184						88,781	92,059	91,512					
<b>MH Tx need, rate</b>	<b>42</b>	<b>42</b>	<b>44</b>						<b>54</b>	<b>46</b>	<b>51</b>					
Number of persons	821	890	906						8,536	9,199	8,952					
<b>BY AGE: 5 - 11 YEARS</b>																
<b>No known BH Tx need, rate</b>	<b>31</b>	<b>28</b>	<b>30</b>						<b>24</b>	<b>20</b>	<b>22</b>					
Number of persons	1,243	1,206	1,314						235,359	242,114	247,519					
<b>MH Tx need, rate</b>	<b>35</b>	<b>36</b>	<b>33</b>						<b>37</b>	<b>33</b>	<b>34</b>					
Number of persons	3,110	2,970	3,055						49,277	51,453	53,465					
<b>BY AGE: 12 - 17 YEARS</b>																
<b>No known BH Tx need, rate</b>	<b>33</b>	<b>35</b>	<b>28</b>						<b>23</b>	<b>21</b>	<b>20</b>					
Number of persons	617	580	536						144,796	147,575	149,019					
<b>MH Tx need, rate</b>	<b>76</b>	<b>76</b>	<b>77</b>						<b>58</b>	<b>53</b>	<b>51</b>					
Number of persons	3,026	2,803	2,679						51,303	53,847	56,174					
<b>SUD Tx need, rate</b>	<b>120</b>	<b>121</b>	<b>119</b>						<b>81</b>	<b>74</b>	<b>75</b>					
Number of persons	829	766	825						11,566	11,833	12,011					
<b>Co-occurring Tx need, rate</b>	<b>128</b>	<b>125</b>	<b>123</b>						<b>103</b>	<b>92</b>	<b>93</b>					
Number of persons	742	708	759						6,821	7,119	7,409					

NOTES

Rates represent number of ER visits per 1,000 Medicaid member months.



# Behavioral Health Treatment Needs and Outcomes among Foster Care Children in Washington State

OUTCOME 8

## Injuries

**INDICATOR**

Proportion of children and youth who have been treated for an injury at least once in SFY.

**IN FOSTER CARE:**

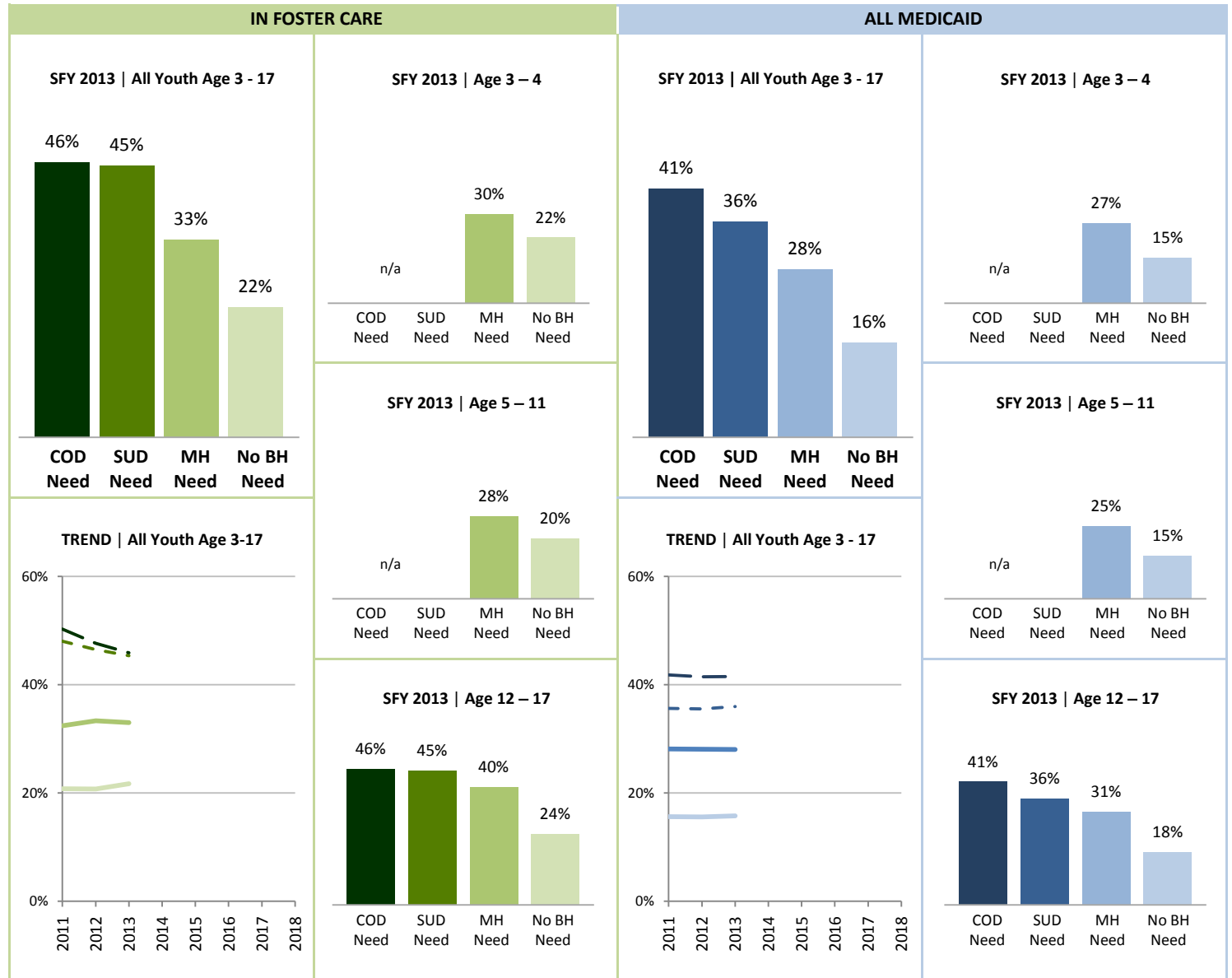
- COD Tx Need
- SUD Tx Need
- MH Tx Need
- No Known BH Tx Need

**ALL MEDICAID:**

- COD Tx Need
- SUD Tx Need
- MH Tx Need
- No Known BH Tx Need

**SOURCE & POPULATION**

DSHS Integrated Client Database. Youth in foster care ever in SFY, and all youth with Medicaid coverage in SFY.



SUPPORTING TABLES | 8 Injuries

IN FOSTER CARE

ALL MEDICAID

STATE FISCAL YEAR

ALL YOUTH: 3 - 17 YEARS	2011	2012	2013	2014	2015	2016	2017	2018	2011	2012	2013	2014	2015	2016	2017	2018
<b>No known BH Tx need, percent</b>	<b>21%</b>	<b>21%</b>	<b>22%</b>						<b>16%</b>	<b>16%</b>	<b>16%</b>					
Number of persons with injury	621	608	658						73,250	75,022	76,867					
Total number of persons	2,993	2,938	3,034						468,936	481,748	488,050					
<b>MH Tx need, percent</b>	<b>32%</b>	<b>33%</b>	<b>33%</b>						<b>28%</b>	<b>28%</b>	<b>28%</b>					
Number of persons with injury	2,255	2,219	2,189						30,652	32,145	33,221					
Total number of persons	6,957	6,663	6,640						109,116	114,499	118,591					
<b>SUD Tx need, percent</b>	<b>48%</b>	<b>46%</b>	<b>45%</b>						<b>36%</b>	<b>36%</b>	<b>36%</b>					
Number of persons with injury	398	356	374						4,118	4,201	4,320					
Total number of persons	829	766	825						11,566	11,833	12,011					
<b>Co-occurring Tx need, percent</b>	<b>50%</b>	<b>48%</b>	<b>46%</b>						<b>42%</b>	<b>41%</b>	<b>41%</b>					
Number of persons with injury	373	337	348						2,849	2,950	3,074					
Total number of persons	742	708	759						6,821	7,119	7,409					
<b>BY AGE: 3 - 4 YEARS</b>																
<b>No known BH Tx need, percent</b>	<b>22%</b>	<b>23%</b>	<b>22%</b>						<b>15%</b>	<b>15%</b>	<b>15%</b>					
Number of persons with injury	249	262	262						13,457	14,014	14,029					
Total number of persons	1,133	1,152	1,184						88,781	92,059	91,512					
<b>MH Tx need, percent</b>	<b>29%</b>	<b>29%</b>	<b>30%</b>						<b>26%</b>	<b>26%</b>	<b>27%</b>					
Number of persons with injury	241	260	273						2,251	2,385	2,425					
Total number of persons	821	890	906						8,536	9,199	8,952					
<b>BY AGE: 5 - 11 YEARS</b>																
<b>No known BH Tx need, percent</b>	<b>19%</b>	<b>20%</b>	<b>20%</b>						<b>14%</b>	<b>14%</b>	<b>15%</b>					
Number of persons with injury	234	236	268						33,762	35,018	36,172					
Total number of persons	1,243	1,206	1,314						235,359	242,114	247,519					
<b>MH Tx need, percent</b>	<b>27%</b>	<b>29%</b>	<b>28%</b>						<b>24%</b>	<b>25%</b>	<b>25%</b>					
Number of persons with injury	830	866	851						12,039	12,647	13,168					
Total number of persons	3,110	2,970	3,055						49,277	51,453	53,465					
<b>BY AGE: 12 - 17 YEARS</b>																
<b>No known BH Tx need, percent</b>	<b>22%</b>	<b>19%</b>	<b>24%</b>						<b>18%</b>	<b>18%</b>	<b>18%</b>					
Number of persons with injury	138	110	128						26,031	25,990	26,666					
Total number of persons	617	580	536						144,796	147,575	149,019					
<b>MH Tx need, percent</b>	<b>39%</b>	<b>39%</b>	<b>40%</b>						<b>32%</b>	<b>32%</b>	<b>31%</b>					
Number of persons with injury	1,184	1,093	1,065						16,362	17,113	17,628					
Total number of persons	3,026	2,803	2,679						51,303	53,847	56,174					
<b>SUD Tx need, percent</b>	<b>48%</b>	<b>46%</b>	<b>45%</b>						<b>36%</b>	<b>36%</b>	<b>36%</b>					
Number of persons with injury	398	356	374						4,118	4,201	4,320					
Total number of persons	829	766	825						11,566	11,833	12,011					
<b>Co-occurring Tx need, percent</b>	<b>50%</b>	<b>48%</b>	<b>46%</b>						<b>42%</b>	<b>41%</b>	<b>41%</b>					
Number of persons with injury	373	337	348						2,849	2,950	3,074					
Total number of persons	742	708	759						6,821	7,119	7,409					



# Behavioral Health Treatment Needs and Outcomes among Foster Care Children in Washington State

[Back to Contents](#)

DECEMBER 2015

## TECHNICAL NOTES

**POPULATION:** All children and youth age 3-17 on Medicaid (or SCHIP) during the state fiscal year (SFY), and the subset of these youth in foster care placement ever in the SFY. Included foster care children may enter foster care in the SFY, exit foster care in the SFY, or live in foster care placement throughout the year. In this dashboard, foster care refers to out-of-home placement under the authority of the Children's Administration, including relative placement.

### CATEGORIES OF TREATMENT NEED (2-year window)

- **Mental health treatment need (MH):** In the past 24 months, any mental health diagnosis, prescription or service recorded in administrative data. The following diagnostic categories are included: Psychotic, Bipolar, Depressive, Anxiety, Adjustment, and ADHD/Conduct/Impulse. The following medication classes are included: Antipsychotic, Antimania, Antidepressant, Antianxiety, and ADHD. Mental health services include DBHR contracted community inpatient or outpatient, state hospital or children's long-term inpatient (CLIP), HCA-funded mental health services, tribal mental health services, and Children's Administration Behavioral Rehabilitation Services (BRS).
- **Substance use disorder treatment need (SUD):** In the past 24 months, at least one substance-related diagnosis, procedure, prescription, treatment, or arrest. As substance use disorder treatment need is rare before adolescence, SUD is unmeasured for youth under age 12.
- **Co-occurring treatment needs (COD = MH + SUD):** Presence of both a mental health treatment need and substance use disorder treatment need during the same 24-month period. As substance use disorder treatment need is rare before adolescence, COD is unmeasured for youth under age 12.
- **No known behavioral health treatment need:** Neither a mental health treatment need nor a substance use disorder treatment need present during the 24-month period.

### DATA SOURCES:

- DSHS Integrated Client Database
- FamLink

## REFERENCES

- Braciszewski, J. and R. L. Stout. (2012). "Substance use among current and former foster youth: A systematic review." *Children and Youth Services Review*, 34: 2337-2344.
- Burns, B.J., Phillips, S.D., Wagner, H.R., Barth, R.P., Kolko, D.J., Campbell, Y., and J. Landsverk. (2004). "Mental health need and access to mental health services by youths involved with child welfare: A national survey." *Journal of the American Academy of Child and Adolescent Psychiatry*, 43(8): 960-970.
- dosReis, S., Zito, J.M., Safer, D.J. and K.L. Soeken. (2001). "Mental health services for youths in foster care and disabled youths." *American Journal of Public Health*, 91(7): 1094-1099.
- Havlicek, J.R., Garcia, A.R., and D.C. Smith. (2013). "Mental health and substance use disorders among foster youth transitioning to adulthood: Past research and future directions." *Children and Youth Services Review*, 35: 194-203.
- Hawkins, J.D., Catalano, R.F., and J.Y. Miller. (1992). "Risk and protective factors for alcohol and other drug problems in adolescence and early adulthood: Implications for substance abuse prevention." *Psychological Bulletin*, 112(1): 64-105.
- Leslie L, K., Hurlburt, M.S., Landsverk, J., Barth, R., and D.J. Slymen. (2004). "Outpatient mental health services for children in foster care: A national perspective." *Child Abuse and Neglect*, 28: 697-712.
- Leslie, L.K., Hurlburt, M.S., James, S., Landsverk, J., Slymen, D.J., and J. Zhang. (2005). "Relationship between entry into child welfare and mental health service use." *Psychiatric Services*, 56: 981-987.

# Behavioral Health Treatment Needs and Outcomes among Foster Care Children in Washington State

DECEMBER 2015



## RDA CONTRIBUTORS

Bridget Pavelle, PhD • Barbara Lucenko, PhD • Robert Hughes, PhD • Barbara E.M. Felver, MES, MPA

## ACKNOWLEDGMENTS

Several of the measures included in this dashboard were modeled from measures developed in collaboration with the Children's Behavioral Health Data and Quality Team, a diverse group of children's behavioral health stakeholders in Washington State. For more information, see "Performance Measures" on DBHR's Children's Behavioral Health website (<https://www.dshs.wa.gov/bhsia/division-behavioral-health-and-recovery/childrens-behavioral-health>).