

SNOHOMISH County

Drug Court Participants: Recidivism and Key Outcome Measures

MAY 2021

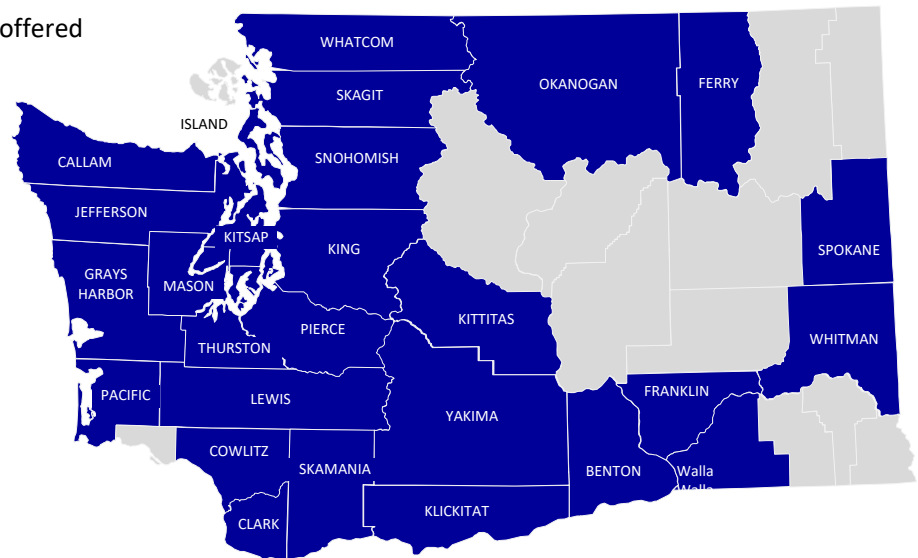
This dashboard presents indicators for monitoring recidivism and other key outcomes among offenders participating in Adult Drug Court. Drug Courts aim to reduce recidivism through judicially supervised substance use disorder treatment, mandatory periodic drug testing, community supervision, use of sanctions, and other rehabilitation services. County-level and statewide trends in drug court enrollment, demographics, recidivism, substance use disorder treatment participation, employment, and Medicaid coverage rates are presented for participants. Indicators are presented only for individuals who started substance use disorder treatment. Due to recent initiatives to integrate behavioral and physical health and changes in reporting systems, new enrollments for years 2016 and greater may be underreported and should not be necessarily interpreted as a decrease in the number of individuals participating in drug courts. Because Clark and Skamania counties were "early adopters" of integrated behavioral health and physical health care, indicators for these two counties were particularly impacted by these reporting changes. This is part of a series of analyses for the HCA Division of Behavioral Health and Recovery describing the experiences of recipients of treatment funded by the Criminal Justice Treatment Account (CJTA). The CJTA pays for substance use disorder treatment and recovery support services for offenders with substance abuse problems.

These measures were produced by the HCA Research and Data Analysis Division in collaboration with:

- DSHS Division of Behavioral Health and Recovery
- Washington State Adult Drug Courts

In 2019, 27 counties in Washington state offered Adult Drug Courts including:

- Benton
- Clallam
- Clark
- Cowlitz
- Ferry
- Franklin
- Grays Harbor
- Island
- Jefferson
- King
- Kitsap
- Kittitas
- Klickitat
- Lewis
- Mason
- Okanogan
- Pacific
- Pierce
- Skagit
- Skamania
- Snohomish
- Spokane
- Thurston
- Walla Walla
- Whatcom
- Whitman
- Yakima





SNOHOMISH County

Drug Court Participants: Recidivism and Key Outcome Measures

MAY 2021

CONTENTS

▶▶▶ **At a Glance**

▶▶▶ **New Enrollment**

Supporting Tables: New Enrollment

▶▶▶ **Recidivism at 18 Months and Average Prior Convictions**

Supporting Tables: Recidivism at 18 Months and Prior Convictions

▶▶▶ **Recidivism at 36 Months and Average Prior Convictions**

Supporting Tables: Recidivism at 36 Months and Prior Convictions

▶▶▶ **Substance Use Disorder Treatment Participation**

Supporting Tables: Substance Use Disorder Treatment

▶▶▶ **Employment**

Supporting Tables: Employment

▶▶▶ **Medicaid Enrollment**

Supporting Tables: Medicaid Enrollment

▶▶▶ **Technical Notes**



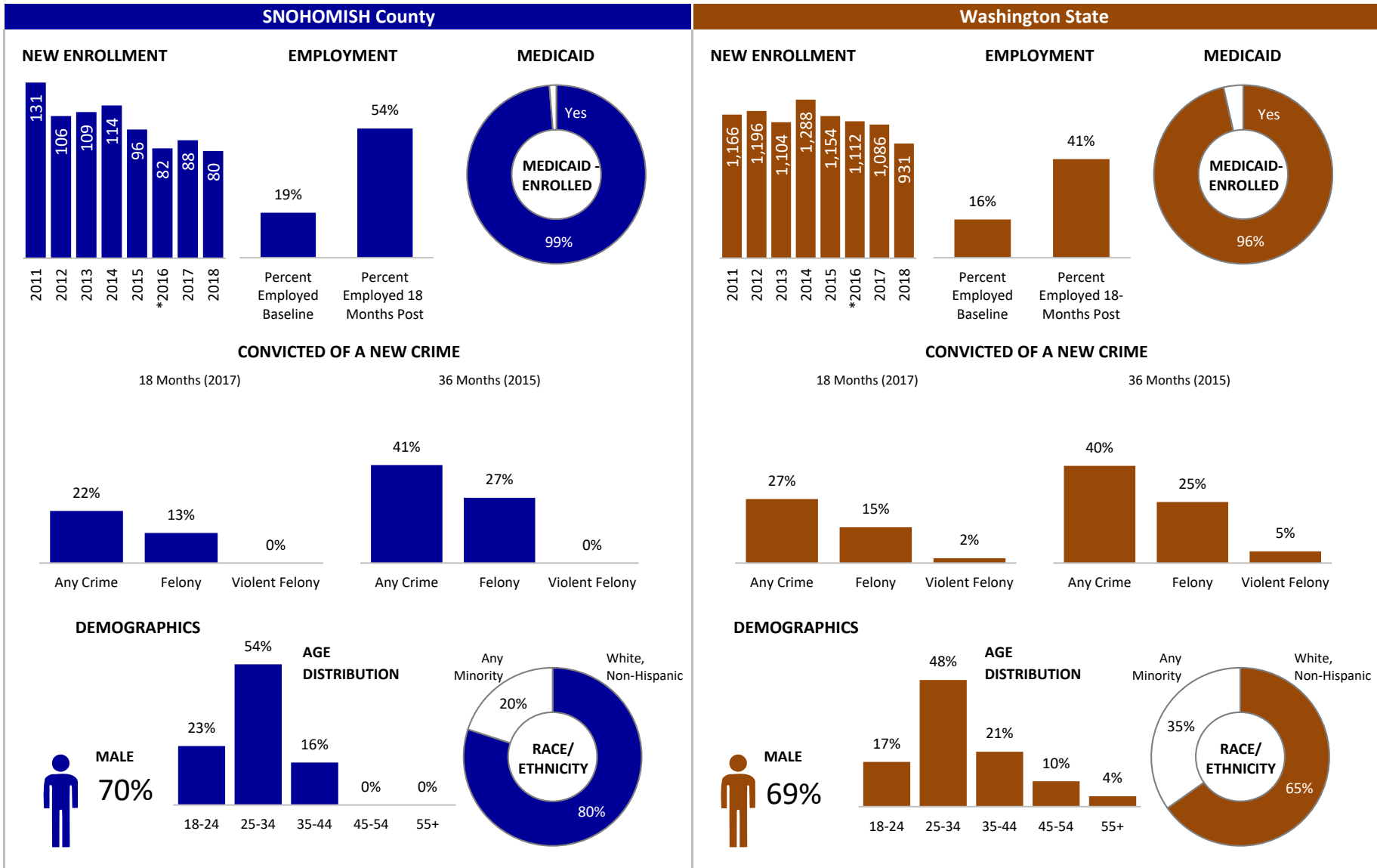
SNOHOMISH County

Drug Court Participants: Recidivism and Key Outcome Measures

[Back to Contents](#)

MAY 2021

AT A GLANCE | 2018





SNOHOMISH County

Drug Court New Enrollment

New Enrollment

LEGEND

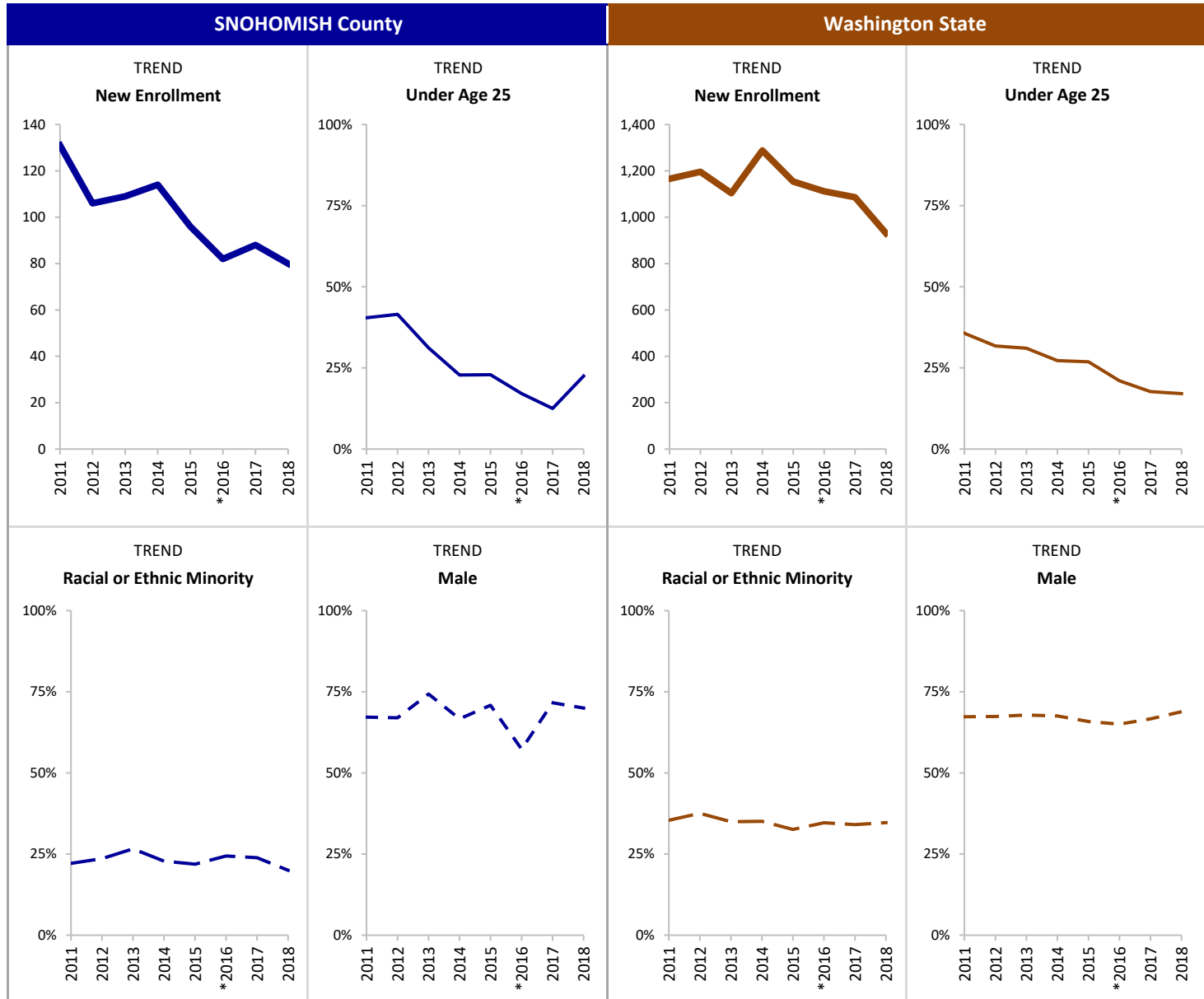
- █ New Enrollment
- █ Under Age 25
- - - Racial or Ethnic Minority
- - - Male

INDICATOR

New enrollment includes only new Drug Court participants who started substance use disorder treatment.

SOURCE & POPULATION

DSHS Integrated Client Databases.
New Drug Court participants who started substance use disorder treatment.



SUPPORTING TABLES | **New Enrollment**

CALENDAR YEAR	SNOHOMISH County								Washington State							
	2011	2012	2013	2014	2015	*2016	2017	2018	2011	2012	2013	2014	2015	*2016	2017	2018
Total New Enrollment	131	106	109	114	96	82	88	80	1,166	1,196	1,104	1,288	1,154	1,112	1,086	931
New Enrolled Population by Age																
18-24	40%	42%	31%	23%	23%	17%	13%	23%	36%	32%	31%	27%	27%	21%	18%	17%
Total Age 18-24	53	44	34	26	22	14	11	18	416	380	343	351	310	234	192	159
25-34	39%	35%	43%	56%	43%	52%	56%	54%	33%	37%	38%	41%	45%	47%	48%	48%
Total Age 25 - 34	51	37	47	64	41	43	49	43	389	443	416	530	515	519	525	450
35-44	17%	18%	18%	13%	27%	21%	27%	16%	18%	18%	18%	18%	18%	21%	22%	21%
Total Age 35-44	22	19	20	15	26	17	24	13	209	210	196	236	205	228	239	195
45-54	--	--	--	--	--	--	--	--	11%	11%	11%	11%	8%	9%	9%	10%
Total Age 45-54									129	127	117	139	88	104	100	90
55+	--	--	--	--	--	--	--	--	2%	3%	3%	2%	3%	2%	3%	4%
Total Age 55 and Older									23	36	32	32	35	27	30	37
New Enrolled Pop. by Race-Ethnicity																
American Native	8%	--	12%	--	--	--	--	--	10%	13%	11%	12%	12%	13%	12%	13%
Total American Native	11		13						116	151	122	151	141	143	128	124
Asian	--	--	--	--	--	--	--	--	5%	5%	5%	6%	5%	5%	5%	4%
Total Asian									58	55	60	78	57	55	53	34
African American	--	--	--	--	--	--	--	--	14%	16%	13%	13%	12%	12%	12%	11%
Total African American									167	188	144	163	143	128	127	102
Hawaiian/PI	--	--	--	--	--	--	--	--	4%	3%	3%	3%	3%	3%	4%	3%
Total Hawaiian/PI									42	37	34	45	33	38	44	28
Hispanic	8%	--	--	--	--	--	--	--	10%	9%	9%	8%	8%	11%	10%	9%
Total Hispanic	11								113	109	95	98	87	118	111	84
White Non-Hispanic	78%	76%	73%	77%	78%	76%	76%	80%	64%	62%	65%	65%	67%	65%	66%	65%
Total White Non-Hispanic	102	81	80	88	75	62	67	64	751	747	718	835	776	727	716	606
Any Minority	22%	24%	27%	23%	22%	24%	24%	20%	35%	38%	35%	35%	33%	35%	34%	35%
Total Any Minority	29	25	29	26	21	20	21	16	413	449	386	452	376	385	370	323
New Enrolled Population by Gender																
Female	33%	33%	26%	33%	29%	43%	28%	30%	33%	33%	32%	32%	34%	35%	33%	31%
Total Female	43	35	28	38	28	35	25	24	381	389	355	418	394	389	362	289
Male	67%	67%	74%	67%	71%	57%	72%	70%	67%	67%	68%	68%	66%	65%	67%	69%
Total Male	88	71	81	76	68	47	63	56	785	806	749	870	760	723	724	641

*Incomplete due to changes in reporting systems resulting from the integration of behavioral and physical health care services. See Technical Notes for details.



SNOHOMISH County

Recidivism at 18 Months: Percent Convicted of a New Offense and Average Prior Convictions

MAY 2021

18-Month Recidivism and Prior Convictions

LEGEND

New Conviction: Type of Offense

- █ Any Crime
- █ Felony
- █ Violent Felony

Prior Convictions

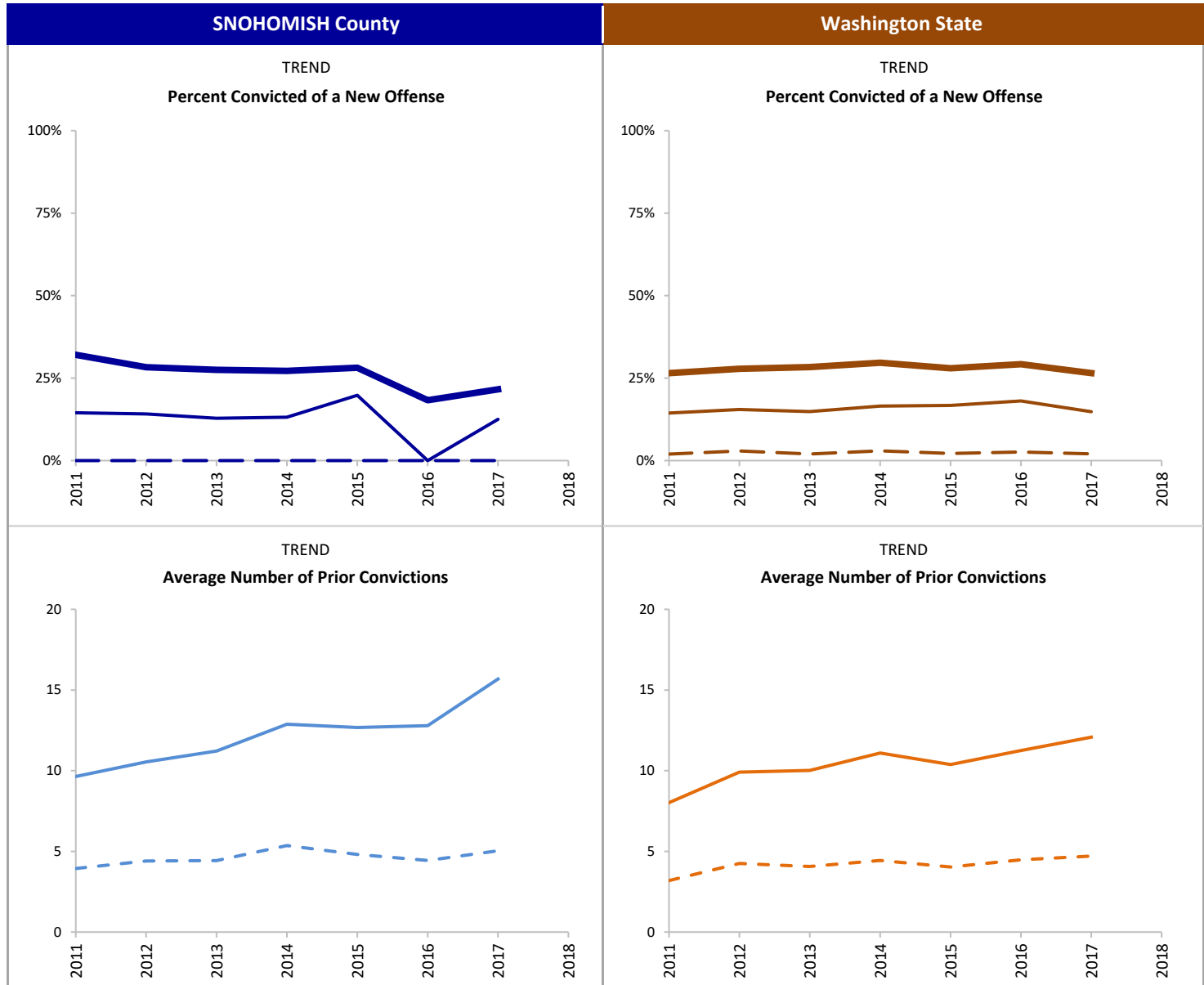
- █ Any Prior
- █ Felony Prior

INDICATOR

Percent of Drug Court participants convicted of a new offense, committed within 18 months after starting substance use disorder treatment. Average number of prior convictions is based on a count of each charge that resulted in a conviction prior to starting treatment.

SOURCE & POPULATION

DSHS Integrated Client Databases. Drug Court participants who started substance use disorder treatment.



SUPPORTING TABLES | 18-Month Recidivism and Prior Convictions

CALENDAR YEAR	SNOHOMISH County								Washington State							
	2011	2012	2013	2014	2015	2016	2017	2018	2011	2012	2013	2014	2015	2016	2017	2018
Total New Enrollment	131	106	109	114	96	82	88		1,166	1,196	1,104	1,288	1,154	1,112	1,086	
NEW Conviction (18 Months)																
Any Crime	32%	28%	28%	27%	28%	18%	22%		27%	28%	28%	30%	28%	29%	27%	
Total with Any Crime	42	30	30	31	27	15	19		309	333	313	382	323	325	288	
Felony	15%	14%	13%	13%	20%	--	13%		14%	15%	15%	17%	17%	18%	15%	
Total with a Felony	19	15	14	15	19		11		168	185	164	213	193	201	161	
Violent Felony	--	--	--	--	--	--	--		2%	3%	2%	3%	2%	3%	2%	
Total with a Violent Felony									23	35	22	38	25	29	22	
Average Number PRIOR Convictions																
Any Crime	9.6	10.5	11.2	12.9	12.7	12.8	15.7		8.0	9.9	10.0	11.1	10.4	11.3	12.1	
Total with Any Crime	131	104	109	114	95	81	88		1,085	1,116	1,051	1,228	1,109	1,080	1,044	
Felony	3.9	4.4	4.4	5.4	4.8	4.4	5.0		3.2	4.2	4.1	4.4	4.0	4.5	4.7	
Total with Any Felony	129	103	108	108	88	73	77		854	947	876	1,043	922	924	879	
Violent Felony	0.3	0.2	0.3	0.3	0.3	0.2	0.3		0.2	0.2	0.2	0.2	0.3	0.3	0.3	
Total with a Violent Felony	26	15	22	24	20	13	20		143	187	178	220	192	204	241	
Non-Violent Felony	3.7	4.2	4.2	5.1	4.5	4.2	4.7		3.0	4.0	3.8	4.2	3.8	4.2	4.4	
Total with a Non-Violent Felony	129	103	108	108	88	73	77		854	947	876	1,043	922	924	879	
Misdemeanor	5.7	6.1	6.8	7.5	7.9	8.4	10.6		4.8	5.7	6.0	6.7	6.4	6.8	7.4	
Total with a Misdemeanor	116	92	97	109	93	80	87		995	1,047	991	1,170	1,049	1,035	997	

--Cells representing fewer than eleven individuals were suppressed to protect client confidentiality.



SNOHOMISH County

[Back to Contents](#)

Recidivism at 36-Months: Percent Convicted of a New Offense and Average Prior Convictions

MARCH 2021

36-Month Recidivism and Prior Convictions

LEGEND

New Conviction: Type of Offense

- █ Any Crime
- █ Felony
- █ Violent Felony

Prior Convictions

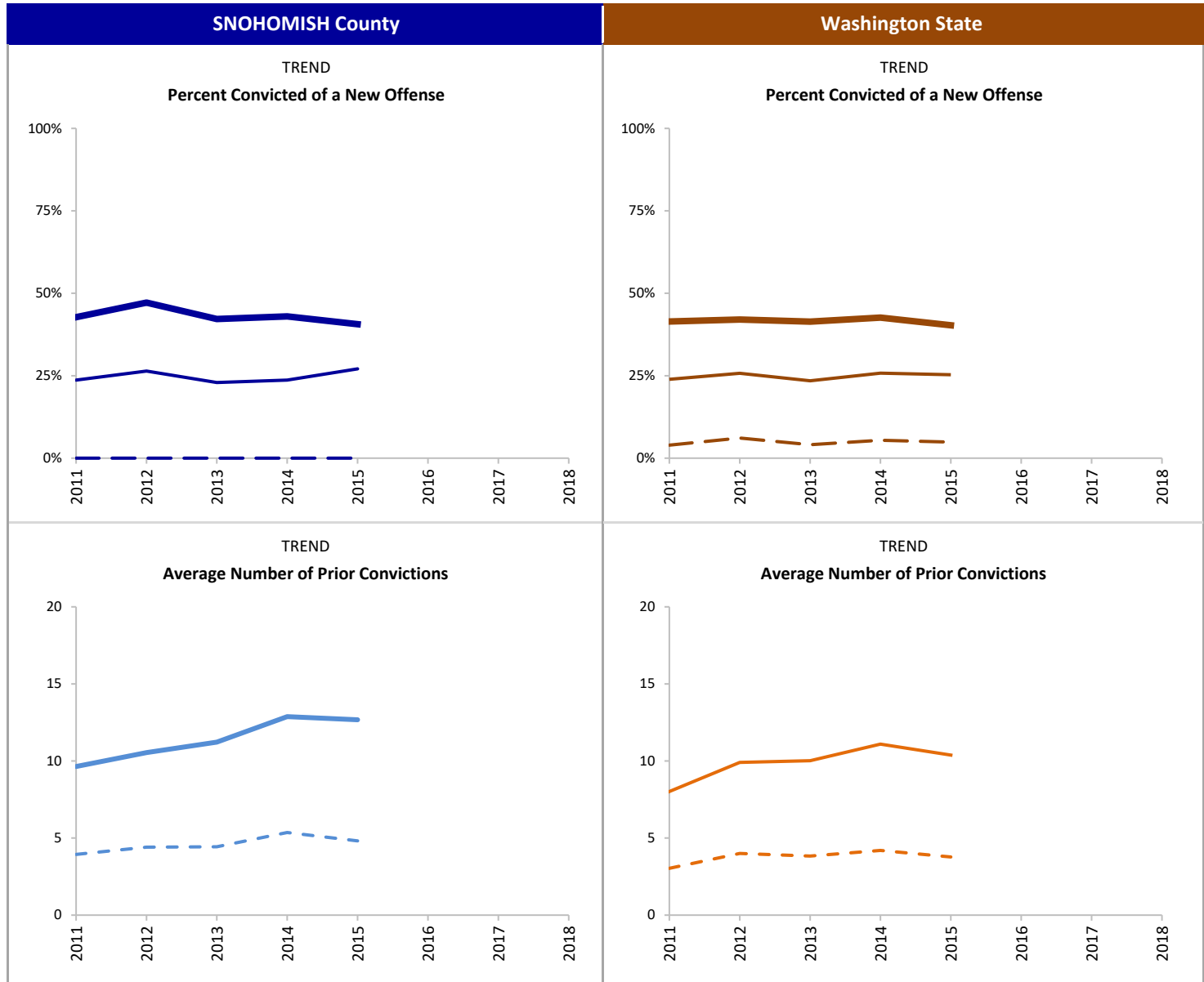
- █ Any Prior
- █ Felony Prior

INDICATOR

Percent of drug court participants convicted of a new offense, committed within 36-months after starting substance use disorder treatment. Average number of prior convictions is based on a count of each charge that resulted in a conviction prior to starting treatment.

SOURCE & POPULATION

DSHS Integrated Client Databases. Drug Court participants who started substance use disorder treatment.



SUPPORTING TABLES | 36-Month Recidivism and Prior Convictions

CALENDAR YEAR	SNOHOMISH County								Washington State							
	2011	2012	2013	2014	2015	2016	2017	2018	2011	2012	2013	2014	2015	2016	2017	2018
Total New Enrollment	131	106	109	114	96				1,166	1,196	1,104	1,288	1,154			
NEW Conviction (36-Months)																
Any Crime	43%	47%	42%	43%	41%				41%	42%	41%	43%	40%			
Total with Any Crime	56	50	46	49	39				483	503	457	549	465			
Felony	24%	26%	23%	24%	27%				24%	26%	23%	26%	25%			
Total with a Felony	31	28	25	27	26				279	308	259	332	292			
Violent Felony	--	--	--	--	--				4%	6%	4%	5%	5%			
Total with a Violent Felony									46	73	45	70	56			
Average Number PRIOR Convictions																
Any Crime	9.6	10.5	11.2	12.9	12.7				8.0	9.9	10.0	11.1	10.4			
Total with Any Crime	131	104	109	114	95				1,085	1,116	1,051	1,228	1,109			
Felony	3.9	4.4	4.4	5.4	4.8				3.2	4.2	4.1	4.4	4.0			
Total with Any Felony	129	103	108	108	88				854	947	876	1,043	922			
Violent Felony	0.3	0.2	0.3	0.3	0.3				0.2	0.2	0.2	0.2	0.3			
Total with a Violent Felony	26	15	22	24	20				143	187	178	220	192			
Non-Violent Felony	3.7	4.2	4.2	5.1	4.5				3.0	4.0	3.8	4.2	3.8			
Total with a Non-Violent Felony	129	103	108	108	88				854	947	876	1,043	922			
Misdemeanor	5.7	6.1	6.8	7.5	7.9				4.8	5.7	6.0	6.7	6.4			
Total with a Misdemeanor	116	92	97	109	93				995	1,047	991	1,170	1,049			

--Cells representing fewer than eleven individuals were suppressed to protect client confidentiality.



SNOHOMISH County

Drug Court Substance Use Disorder Treatment Participation

[Back to Contents](#)

MARCH 2021

Substance Use Disorder Treatment

LEGEND

Engagement and Retention

- █ Engaged in Treatment
- █ Retained in Treatment

Primary Substance

- █ Heroin/Other Opioids
- █ Methamphetamine

Average Days of SUD Tx

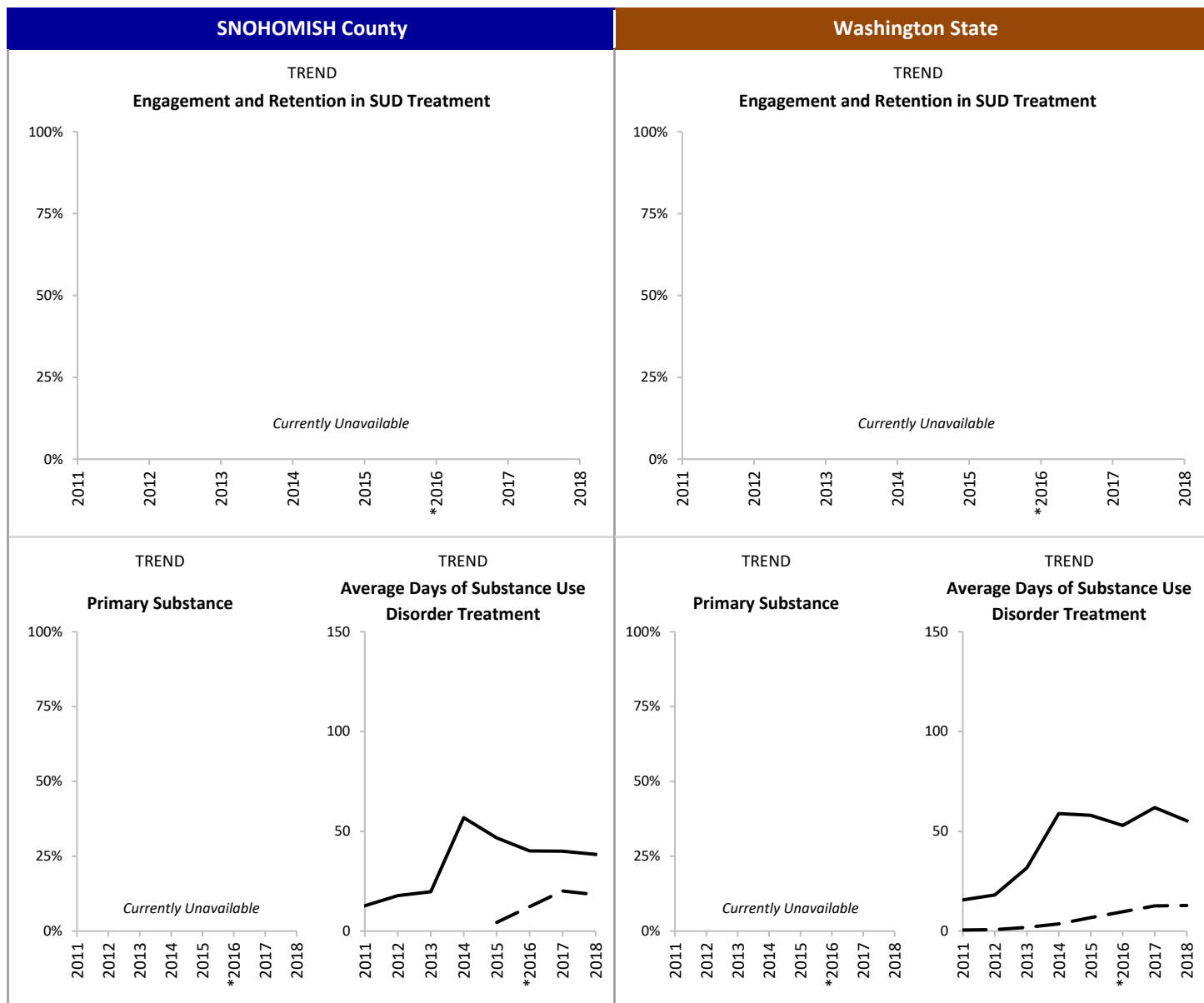
- █ Outpatient
- █ Inpatient

INDICATOR

Percent of drug court participants with Engagement and Retention in substance use disorder treatment. Engagement is defined as initiating treatment and receiving two additional services within 30 days after initiation. Retention is defined as receiving treatment services at least once per month for the first 90 days after initiation (see Technical Notes for full definition).

SOURCE & POPULATION

DSHS Integrated Client Databases. Drug Court participants who started substance use disorder treatment.



SUPPORTING TABLES | Substance Use Disorder Treatment

CALENDAR YEAR	SNOHOMISH County								Washington State							
	2011	2012	2013	2014	2015	*2016	2017	2018	2011	2012	2013	2014	2015	*2016	2017	2018
Total New Enrollment	131	106	109	114	96	82	88	80	1,166	1,196	1,104	1,288	1,154	1,112	1,086	931
Engagement and Retention																
Engagement																
Total Engaged in Treatment	Currently Unavailable								Currently Unavailable							
Retention																
Total Retained in Treatment																
Primary Substance																
Heroin and Other Opioids																
Total Heroin and Other Opioids																
Methamphetamine																
Total Methamphetamine	Currently Unavailable								Currently Unavailable							
Cannabis																
Total Cannabis																
Alcohol																
Total Alcohol																
Type of SUD Treatment																
Outpatient Treatment	19%	20%	36%	73%	90%	87%	91%	85%	23%	26%	52%	75%	82%	87%	90%	88%
Number in Outpatient Tx	25	21	39	83	86	71	80	68	266	310	576	972	941	965	973	816
Average Days in Outpatient Tx	12.7	17.8	19.7	56.8	46.7	40.1	40.0	38.4	15.6	18.1	31.7	58.9	58.0	52.9	61.9	55.3
Inpatient Treatment	--	--	--	--	15%	N/A	52%	65%	2%	1%	3%	7%	14%	N/A	37%	34%
Number in Inpatient Tx					14		46	52	18	16	36	94	165		406	321
Average Days in Inpatient Tx					4.4		20.1	18.2	0.5	0.8	1.9	3.6	6.7		12.6	12.8
Medication Assisted Treatment	--	--	--	--	--	--	14%	35%	1%	1%	1%	2%	9%	16%	24%	31%
Number in Medication Assisted Tx							12	28	11	11	16	31	99	179	258	284

*Incomplete due to changes in reporting systems resulting from the integration of behavioral and physical health care services. See technical notes for details.

--Cells representing fewer than eleven individuals were suppressed to protect client confidentiality.



SNOHOMISH County

Drug Court Employment and Earnings

Employment and Earnings

LEGEND

Employment

- █ Baseline
- - - 18-Months Post

Earnings

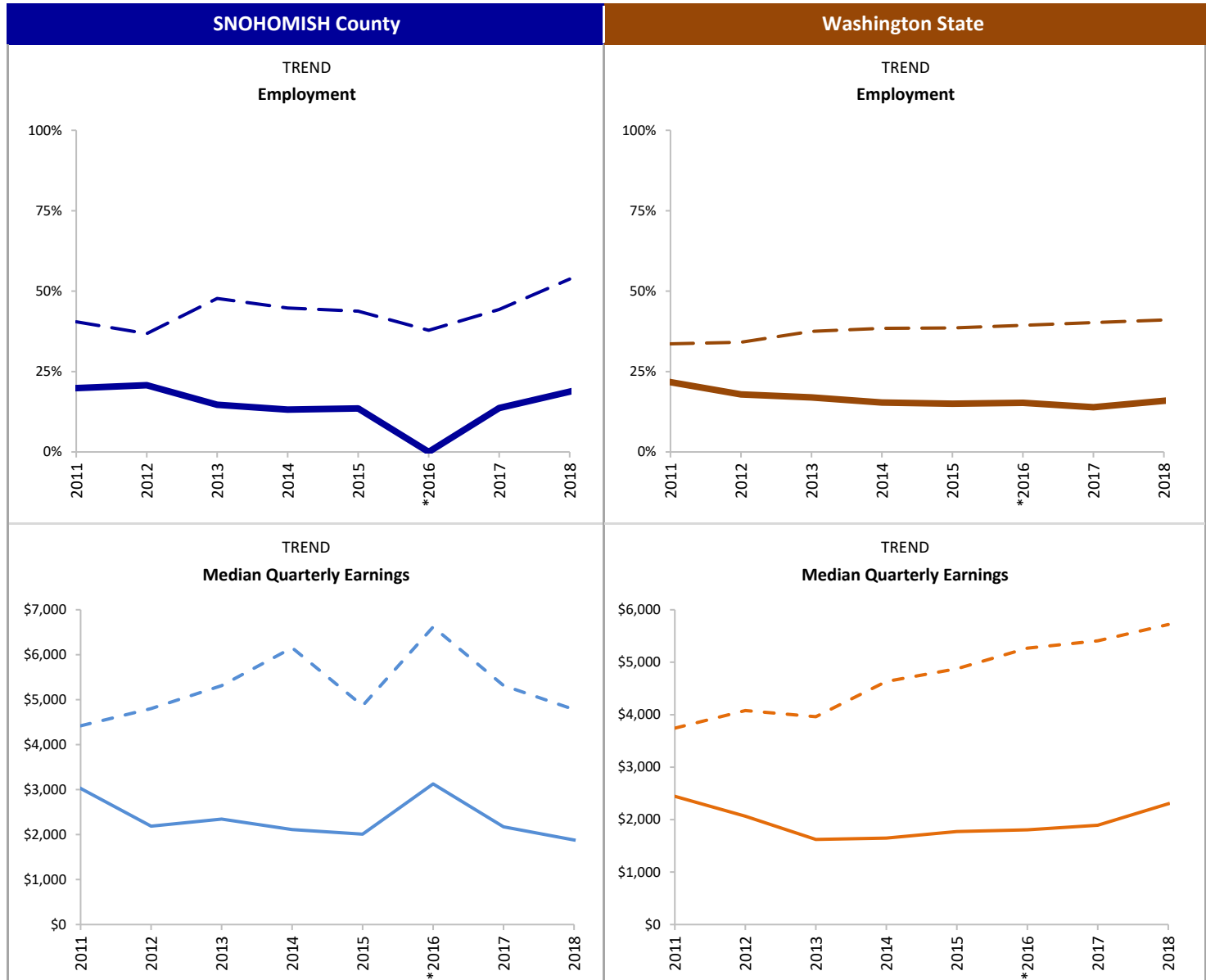
- █ Baseline
- - - 18-Months Post

INDICATOR

Percent of drug court participants employed part-time or full-time at baseline and 18-months after starting substance use disorder treatment. Baseline includes individuals with any employment in the quarter prior to starting treatment. Individuals were considered employed 18-months post if they had any earnings in the 6th quarter (18-months) after starting treatment. Median quarterly earnings is calculated only for those with non-zero earnings in the quarter.

SOURCE & POPULATION

DSHS Integrated Client Databases. Drug Court participants who started substance use disorder treatment.



SUPPORTING TABLES | **Employment**

CALENDAR YEAR	SNOHOMISH County								Washington State							
	2011	2012	2013	2014	2015	*2016	2017	2018	2011	2012	2013	2014	2015	*2016	2017	2018
Total New Enrollment	131	106	109	114	96	82	88	80	1,166	1,196	1,104	1,288	1,154	1,112	1,086	931
Employed Prior to Enrollment																
Percent Employed Baseline	20%	21%	15%	13%	14%	--	14%	19%	22%	18%	17%	15%	15%	15%	14%	16%
Number Employed at Baseline	26	22	16	15	13		12	15	253	214	187	198	173	170	151	148
Median Qtrly Earnings Baseline	\$ 3,026	\$ 2,187	\$ 2,345	\$ 2,111	\$ 2,009	\$ 3,127	\$ 2,174	\$ 1,880	\$ 2,444	\$ 2,066	\$ 1,622	\$ 1,647	\$ 1,772	\$ 1,806	\$ 1,892	\$ 2,303
Median Qtrly Hours Worked Baseline	270	152	147	197	90	242	132	146	197	186	138	132	145	139	151	145
Employed 18 Months After Enrollment																
Percent Employed 18-Months Post	40%	37%	48%	45%	44%	38%	44%	54%	34%	34%	38%	38%	39%	39%	40%	41%
Number Employed 18-Months Post	53	39	52	51	42	31	39	43	392	408	414	495	445	438	437	382
Median Qtrly Earnings 18-Mos. Post	\$ 4,419	\$ 4,803	\$ 5,312	\$ 6,156	\$ 4,867	\$ 6,618	\$ 5,316	\$ 4,782	\$ 3,743	\$ 4,078	\$ 3,961	\$ 4,633	\$ 4,876	\$ 5,268	\$ 5,408	\$ 5,719
Median Qtrly Hours 18-Mos. Post	309	370	342	404	397	409	315	276	328	366	325	355	357	369	352	377

*Incomplete due to changes in reporting systems resulting from the integration of behavioral and physical health care services. See technical notes for details.

--Cells representing fewer than eleven individuals were suppressed to protect client confidentiality.



SNOHOMISH County

Drug Court Medicaid Enrollment

[Back to Contents](#)

MARCH 2021

Medicaid Enrollment

LEGEND

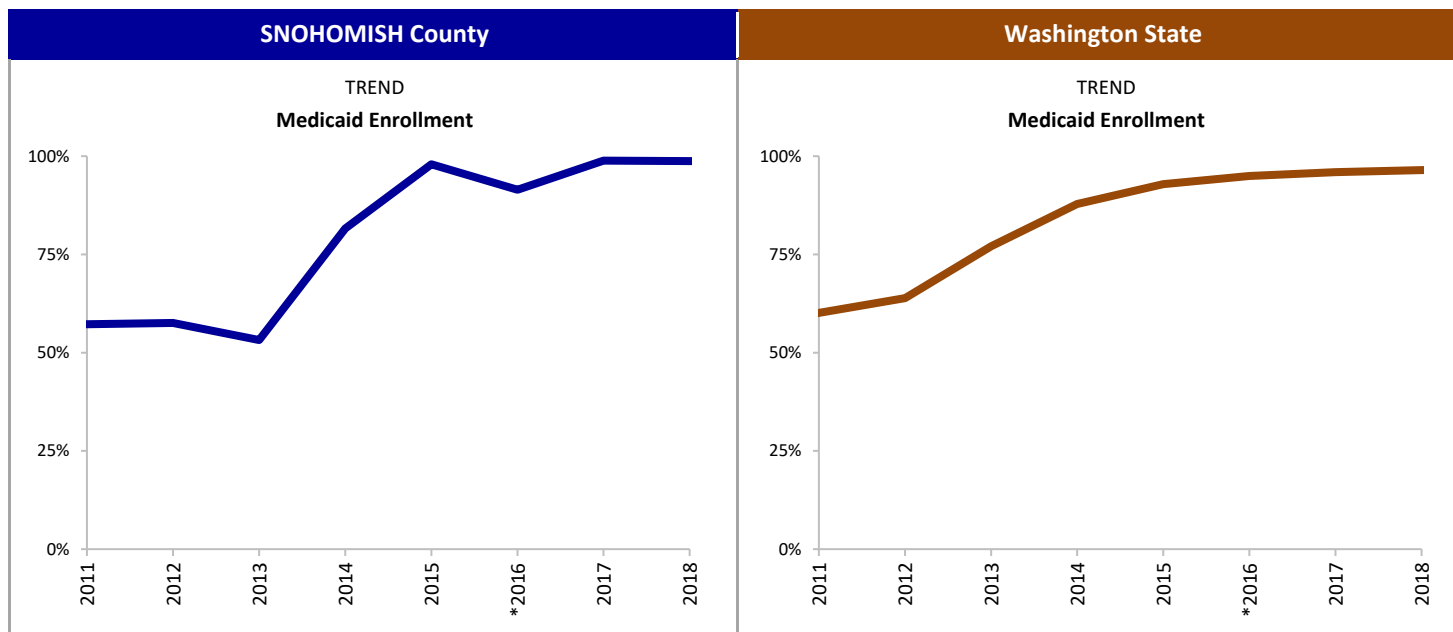
— Percent Enrolled in Medicaid

INDICATOR

Percent of drug court participants enrolled in Medicaid at any point during the 12-months after starting substance use disorder treatment.

SOURCE & POPULATION

DSHS Integrated Client Databases. Drug Court participants who started substance use disorder treatment.



*Incomplete due to changes in reporting systems resulting from the integration of behavioral and physical health care services. See technical notes for details.

SUPPORTING TABLES | Medicaid Enrollment

CALENDAR YEAR	SNOHOMISH County								Washington State							
	2011	2012	2013	2014	2015	*2016	2017	2018	2011	2012	2013	2014	2015	*2016	2017	2018
Total New Enrollment	131	106	109	114	96	82	88	80	1,166	1,196	1,104	1,288	1,154	1,112	1,086	931
Medicaid Enrollment																
Percent Enrolled in Medicaid	57%	58%	53%	82%	98%	91%	99%	99%	60%	64%	77%	88%	93%	95%	96%	96%
Number Enrolled in Medicaid	75	61	58	93	94	75	87	79	701	764	851	1,131	1,072	1,056	1,042	898



SNOHOMISH County

Drug Court Participants: Recidivism and Key Outcome Measures

[Back to Contents](#)

MARCH 2021

TECHNICAL NOTES

POPULATION

- **Total New Enrollment:** Includes all new drug court participants who started substance use disorder treatment within 12-months of their drug court start date. The dashboard indicators are based on the enrolled population. Blank cells indicate data were missing or suppressed due to fewer than 10 enrolled participants.
- The decrease in new enrollment in 2016 is due to underreporting of treatment records during the implementation of a new behavioral health data system and the integration of behavioral and physical health care. It should not be interpreted as a decrease in the number of individuals participating in drug courts. Future updates will address this shortcoming with available data.

INDICATORS

- **Recidivism:** Defined as a new conviction for an offense that occurred 18- or 36-months after the month the participant started substance use disorder treatment. The conviction may occur anytime after the offense date. The average number of prior convictions is based on a count of all charges that resulted in a conviction for offenses that occurred prior to the treatment start date. Conviction data were obtained from the Administrative Office of the Courts.
- **Substance Use Disorder Treatment:** The Washington Circle Measure of Engagement is defined as initiating substance use disorder treatment and receiving two additional services within 30 days of initiation. Retention is an additional measure used in Washington State which is defined as receiving treatment services at least once per month for the first 90 days after initiation, or completing treatment and being discharged within 90 days, or transferring to a residential treatment facility within 90 days. Engagement and Retention measures are calculated only for those whose first treatment episode was an outpatient service. Data from the Treatment and Assessment Report Generation Tool (TARGET) and the Behavioral Health Data System (BHDS) were used to identify substance use disorder treatment, primary substance and average days of treatment. Treatment shown is not necessarily the treatment approved by the court. Due to changes in the behavioral health data system, the engagement and retention measures are not currently available.
- **Employment:** Quarterly employment and earnings data were obtained from the Washington State Employment Security Department. Median quarterly earnings and hours worked is reported only for individuals with non-zero earnings during the quarter.
- **Medicaid Enrollment:** Obtained from eligibility codes available in the DSHS Integrated Client Database (ICDB).

DATA SOURCES

- DSHS Integrated Client Database
- Washington State Drug Courts
- Drug Court Case Management System (DCCM)
- Administrative Office of the Courts Adult Drug Court Docket Codes

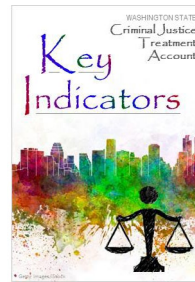
MISSING DATA

- Klickitat, Pacific, Skagit and Whitman county drug court data are missing for 2016.

SNOHOMISH County

Drug Court Participants: Recidivism and Key Outcome Measures

MARCH 2021



CONTRIBUTORS

Tasha Fox, RDA • Paula Henzel, RDA • Jim Mayfield, RDA • Callie Black, RDA • Barbara E.M. Felver, RDA

<https://www.dshs.wa.gov/rda>