

# THURSTON County

## Drug Court Participants: Recidivism and Key Outcome Measures

MAY 2021

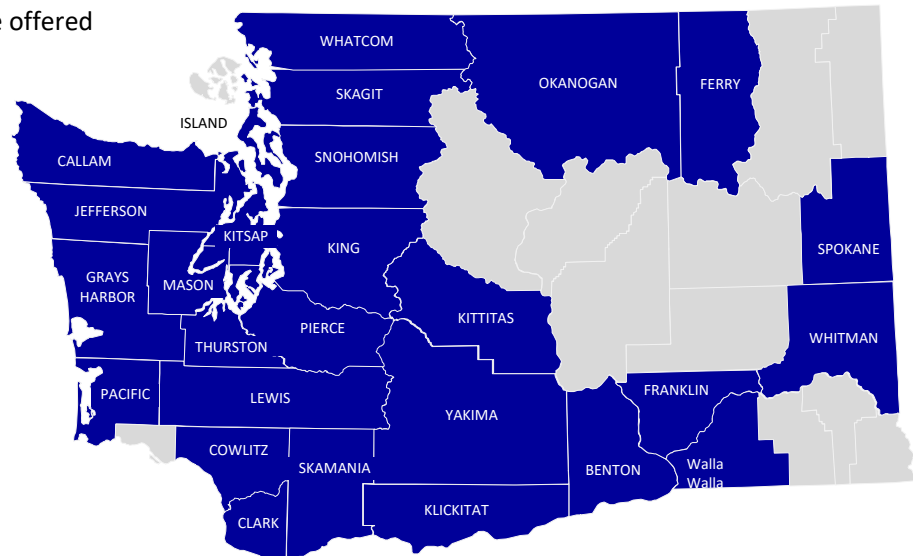
This dashboard presents indicators for monitoring recidivism and other key outcomes among offenders participating in Adult Drug Court. Drug Courts aim to reduce recidivism through judicially supervised substance use disorder treatment, mandatory periodic drug testing, community supervision, use of sanctions, and other rehabilitation services. County-level and statewide trends in drug court enrollment, demographics, recidivism, substance use disorder treatment participation, employment, and Medicaid coverage rates are presented for participants. Indicators are presented only for individuals who started substance use disorder treatment. Due to recent initiatives to integrate behavioral and physical health and changes in reporting systems, new enrollments for years 2016 and greater may be underreported and should not be necessarily interpreted as a decrease in the number of individuals participating in drug courts. Because Clark and Skamania counties were "early adopters" of integrated behavioral health and physical health care, indicators for these two counties were particularly impacted by these reporting changes. This is part of a series of analyses for the HCA Division of Behavioral Health and Recovery describing the experiences of recipients of treatment funded by the Criminal Justice Treatment Account (CJTA). The CJTA pays for substance use disorder treatment and recovery support services for offenders with substance abuse problems.

These measures were produced by the HCA Research and Data Analysis Division in collaboration with:

- DSHS Division of Behavioral Health and Recovery
- Washington State Adult Drug Courts

In 2019, 27 counties in Washington state offered Adult Drug Courts including:

- Benton
- Clallam
- Clark
- Cowlitz
- Ferry
- Franklin
- Grays Harbor
- Island
- Jefferson
- King
- Kitsap
- Kittitas
- Klickitat
- Lewis
- Mason
- Okanogan
- Pacific
- Pierce
- Skagit
- Skamania
- Snohomish
- Spokane
- Thurston
- Walla Walla
- Whatcom
- Whitman
- Yakima





# THURSTON County

## Drug Court Participants: Recidivism and Key Outcome Measures

MAY 2021

### CONTENTS

▶▶▶ **At a Glance**

▶▶▶ **New Enrollment**

*Supporting Tables: New Enrollment*

▶▶▶ **Recidivism at 18 Months and Average Prior Convictions**

*Supporting Tables: Recidivism at 18 Months and Prior Convictions*

▶▶▶ **Recidivism at 36 Months and Average Prior Convictions**

*Supporting Tables: Recidivism at 36 Months and Prior Convictions*

▶▶▶ **Substance Use Disorder Treatment Participation**

*Supporting Tables: Substance Use Disorder Treatment*

▶▶▶ **Employment**

*Supporting Tables: Employment*

▶▶▶ **Medicaid Enrollment**

*Supporting Tables: Medicaid Enrollment*

▶▶▶ **Technical Notes**



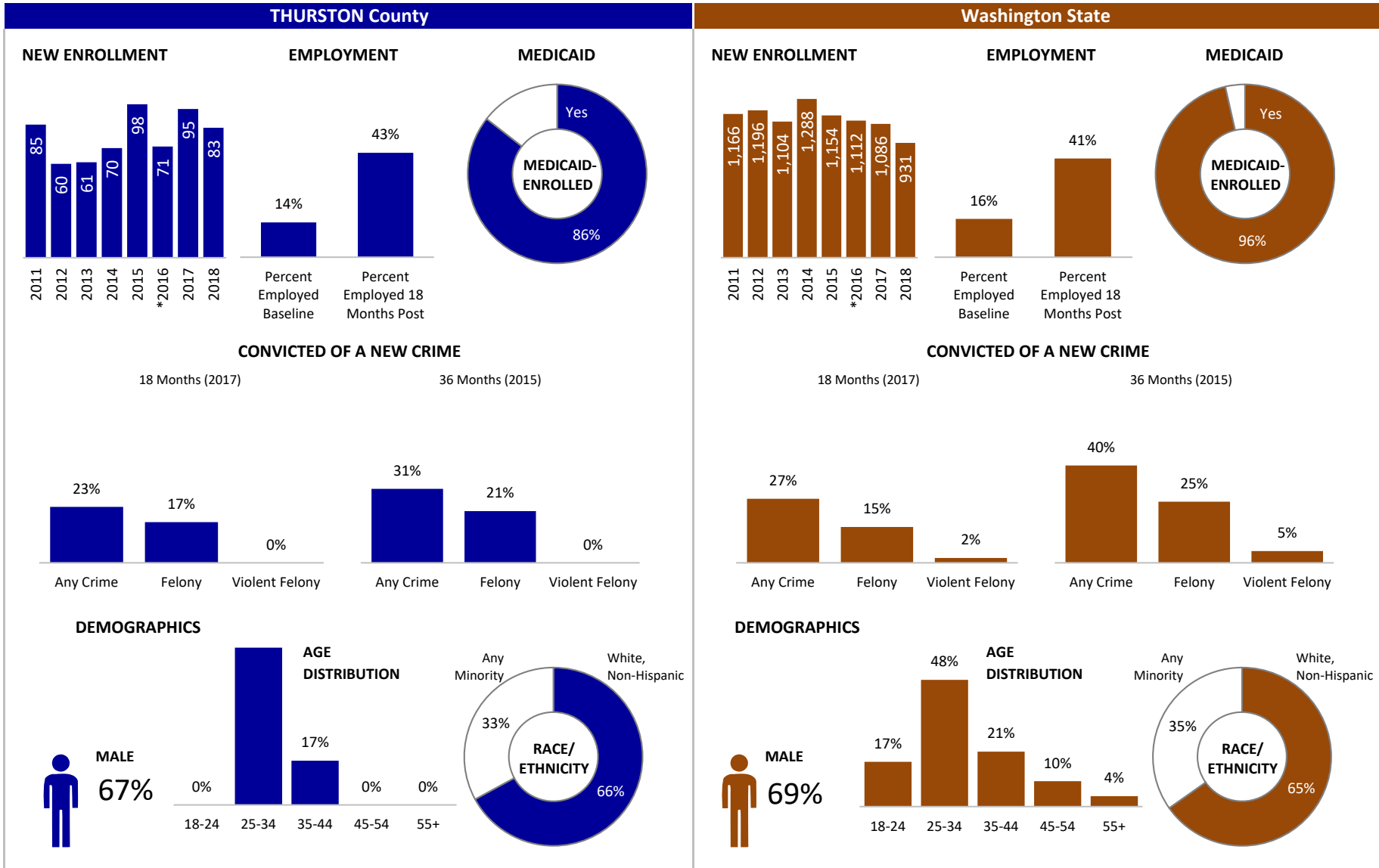
# THURSTON County

## Drug Court Participants: Recidivism and Key Outcome Measures

[Back to Contents](#)

MAY 2021

### AT A GLANCE | 2018





# THURSTON County

## Drug Court New Enrollment

### New Enrollment

**LEGEND**

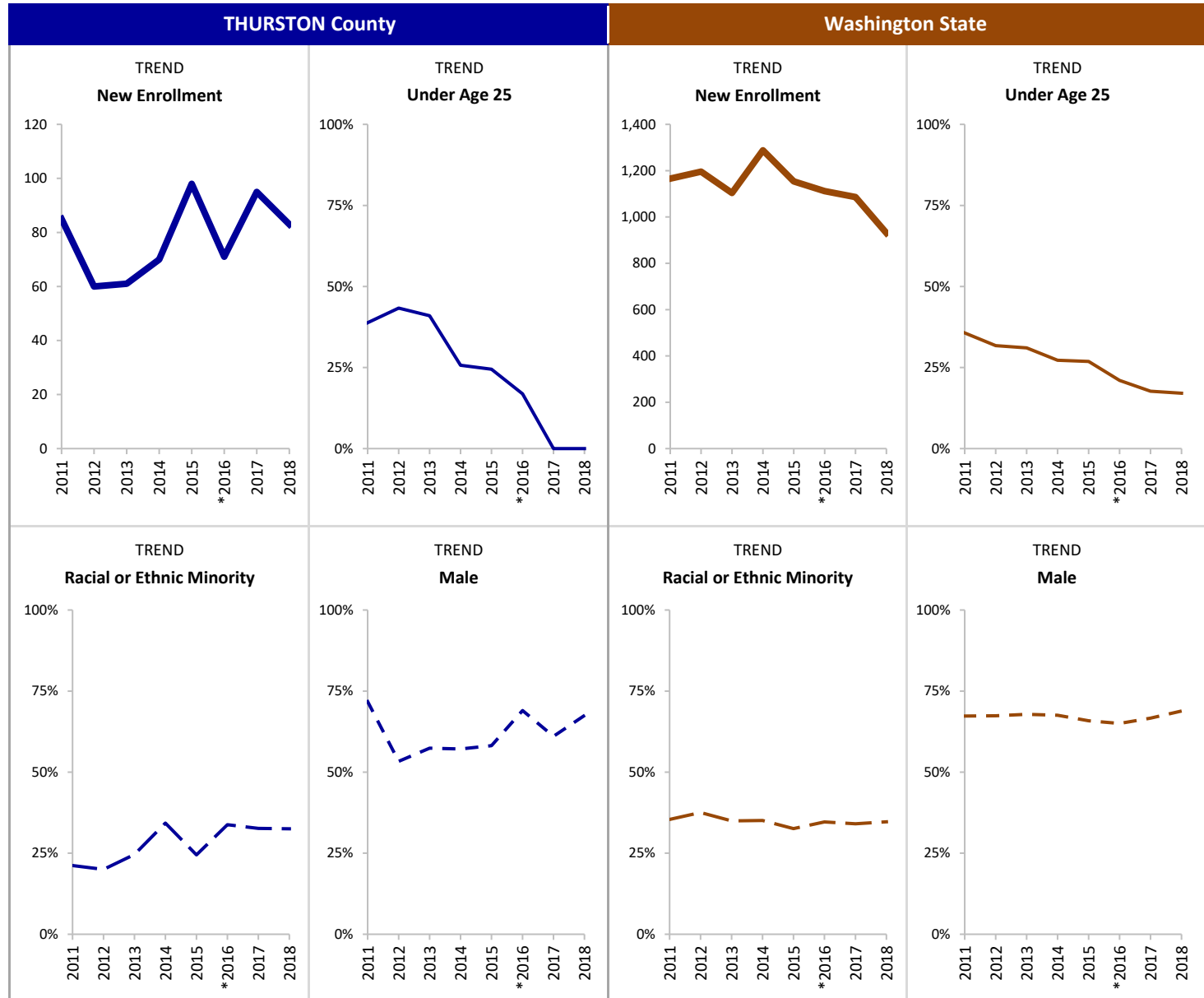
- New Enrollment
- Under Age 25
- - - Racial or Ethnic Minority
- - - Male

**INDICATOR**

New enrollment includes only new Drug Court participants who started substance use disorder treatment.

**SOURCE & POPULATION**

DSHS Integrated Client Databases.  
New Drug Court participants who started substance use disorder treatment.



SUPPORTING TABLES | **New Enrollment**

CALENDAR YEAR	THURSTON County								Washington State							
	2011	2012	2013	2014	2015	*2016	2017	2018	2011	2012	2013	2014	2015	*2016	2017	2018
<b>Total New Enrollment</b>	85	60	61	70	98	71	95	83	1,166	1,196	1,104	1,288	1,154	1,112	1,086	931
<b>New Enrolled Population by Age</b>																
<b>18-24</b>	39%	43%	41%	26%	24%	17%	--	--	36%	32%	31%	27%	27%	21%	18%	17%
Total Age 18-24	33	26	25	18	24	12			416	380	343	351	310	234	192	159
<b>25-34</b>	38%	38%	34%	44%	50%	49%	54%	63%	33%	37%	38%	41%	45%	47%	48%	48%
Total Age 25 - 34	32	23	21	31	49	35	51	52	389	443	416	530	515	519	525	450
<b>35-44</b>	14%	--	18%	19%	18%	21%	22%	17%	18%	18%	18%	18%	18%	21%	22%	21%
Total Age 35-44	12		11	13	18	15	21	14	209	210	196	236	205	228	239	195
<b>45-54</b>	--	--	--	--	--	--	14%	--	11%	11%	11%	11%	8%	9%	9%	10%
Total Age 45-54							13		129	127	117	139	88	104	100	90
<b>55+</b>	--	--	--	--	--	--	--	--	2%	3%	3%	2%	3%	2%	3%	4%
Total Age 55 and Older									23	36	32	32	35	27	30	37
<b>New Enrolled Pop. by Race-Ethnicity</b>																
<b>American Native</b>	--	--	--	--	11%	--	16%	17%	10%	13%	11%	12%	12%	13%	12%	13%
Total American Native					11		15	14	116	151	122	151	141	143	128	124
<b>Asian</b>	--	--	--	--	--	--	--	--	5%	5%	5%	6%	5%	5%	5%	4%
Total Asian									58	55	60	78	57	55	53	34
<b>African American</b>	--	--	--	--	--	--	--	--	14%	16%	13%	13%	12%	12%	12%	11%
Total African American									167	188	144	163	143	128	127	102
<b>Hawaiian/PI</b>	--	--	--	--	--	--	--	--	4%	3%	3%	3%	3%	3%	4%	3%
Total Hawaiian/PI									42	37	34	45	33	38	44	28
<b>Hispanic</b>	--	--	--	--	--	--	--	--	10%	9%	9%	8%	8%	11%	10%	9%
Total Hispanic									113	109	95	98	87	118	111	84
<b>White Non-Hispanic</b>	79%	80%	75%	66%	76%	66%	67%	66%	64%	62%	65%	65%	67%	65%	66%	65%
Total White Non-Hispanic	67	48	46	46	74	47	64	55	751	747	718	835	776	727	716	606
<b>Any Minority</b>	21%	20%	25%	34%	24%	34%	33%	33%	35%	38%	35%	35%	33%	35%	34%	35%
Total Any Minority	18	12	15	24	24	24	31	27	413	449	386	452	376	385	370	323
<b>New Enrolled Population by Gender</b>																
<b>Female</b>	28%	47%	43%	43%	42%	31%	39%	33%	33%	33%	32%	32%	34%	35%	33%	31%
Total Female	24	28	26	30	41	22	37	27	381	389	355	418	394	389	362	289
<b>Male</b>	72%	53%	57%	57%	58%	69%	61%	67%	67%	67%	68%	68%	66%	65%	67%	69%
Total Male	61	32	35	40	57	49	58	56	785	806	749	870	760	723	724	641

\*Incomplete due to changes in reporting systems resulting from the integration of behavioral and physical health care services. See Technical Notes for details.



# THURSTON County

## Recidivism at 18 Months: Percent Convicted of a New Offense and Average Prior Convictions

MAY 2021

### 18-Month Recidivism and Prior Convictions

**LEGEND**

**New Conviction: Type of Offense**

- Any Crime
- Felony
- Violent Felony

**Prior Convictions**

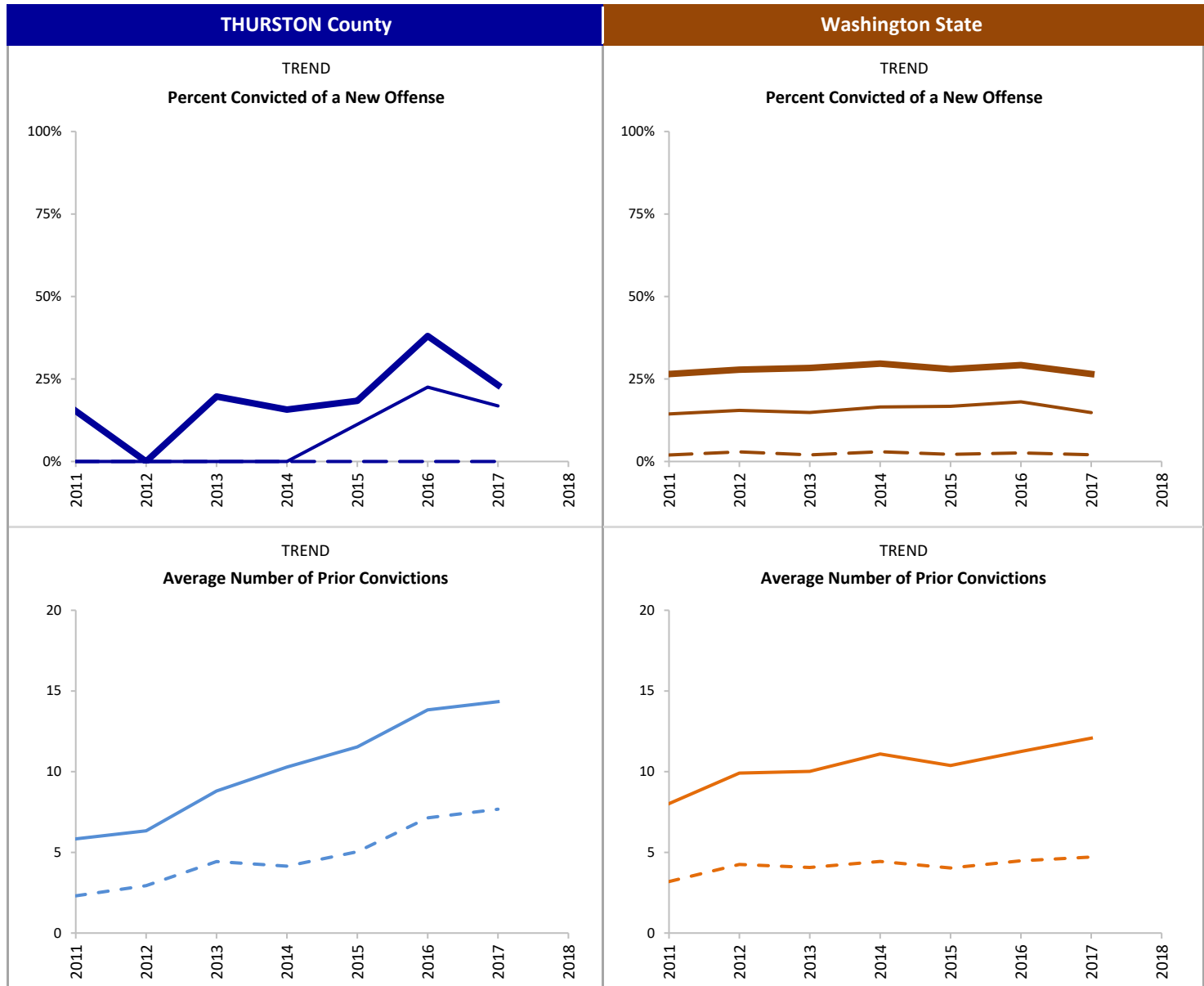
- Any Prior
- - - Felony Prior

**INDICATOR**

Percent of Drug Court participants convicted of a new offense, committed within 18 months after starting substance use disorder treatment. Average number of prior convictions is based on a count of each charge that resulted in a conviction prior to starting treatment.

**SOURCE & POPULATION**

DSHS Integrated Client Databases. Drug Court participants who started substance use disorder treatment.



SUPPORTING TABLES | 18-Month Recidivism and Prior Convictions

CALENDAR YEAR	THURSTON County								Washington State							
	2011	2012	2013	2014	2015	2016	2017	2018	2011	2012	2013	2014	2015	2016	2017	2018
<b>Total New Enrollment</b>	85	60	61	70	98	71	95		1,166	1,196	1,104	1,288	1,154	1,112	1,086	
<b>NEW Conviction (18 Months)</b>																
<b>Any Crime</b>	15%	--	20%	16%	18%	38%	23%		27%	28%	28%	30%	28%	29%	27%	
Total with Any Crime	13		12	11	18	27	22		309	333	313	382	323	325	288	
<b>Felony</b>	--	--	--	--	11%	23%	17%		14%	15%	15%	17%	17%	18%	15%	
Total with a Felony					11	16	16		168	185	164	213	193	201	161	
<b>Violent Felony</b>	--	--	--	--	--	--	--		2%	3%	2%	3%	2%	3%	2%	
Total with a Violent Felony									23	35	22	38	25	29	22	
<b>Average Number PRIOR Convictions</b>																
<b>Any Crime</b>	5.8	6.3	8.8	10.3	11.5	13.8	14.3		8.0	9.9	10.0	11.1	10.4	11.3	12.1	
Total with Any Crime	79	57	57	62	94	68	94		1,085	1,116	1,051	1,228	1,109	1,080	1,044	
<b>Felony</b>	2.3	2.9	4.4	4.1	5.0	7.1	7.7		3.2	4.2	4.1	4.4	4.0	4.5	4.7	
Total with Any Felony	57	44	48	48	78	65	84		854	947	876	1,043	922	924	879	
<b>Violent Felony</b>	--	--	--	0.3	0.2	0.5	0.6		0.2	0.2	0.2	0.2	0.3	0.3	0.3	
Total with a Violent Felony				12	17	20	31		143	187	178	220	192	204	241	
<b>Non-Violent Felony</b>	2.2	2.9	4.3	3.8	4.8	6.6	7.1		3.0	4.0	3.8	4.2	3.8	4.2	4.4	
Total with a Non-Violent Felony	57	44	48	48	78	65	84		854	947	876	1,043	922	924	879	
<b>Misdemeanor</b>	3.5	3.4	4.4	6.1	6.5	6.7	6.7		4.8	5.7	6.0	6.7	6.4	6.8	7.4	
Total with a Misdemeanor	69	49	54	62	90	62	89		995	1,047	991	1,170	1,049	1,035	997	

--Cells representing fewer than eleven individuals were suppressed to protect client confidentiality.



# THURSTON County

## Recidivism at 36-Months: Percent Convicted of a New Offense and Average Prior Convictions

MARCH 2021

### 36-Month Recidivism and Prior Convictions

**LEGEND**

**New Conviction: Type of Offense**

- █ Any Crime
- █ Felony
- █ Violent Felony

**Prior Convictions**

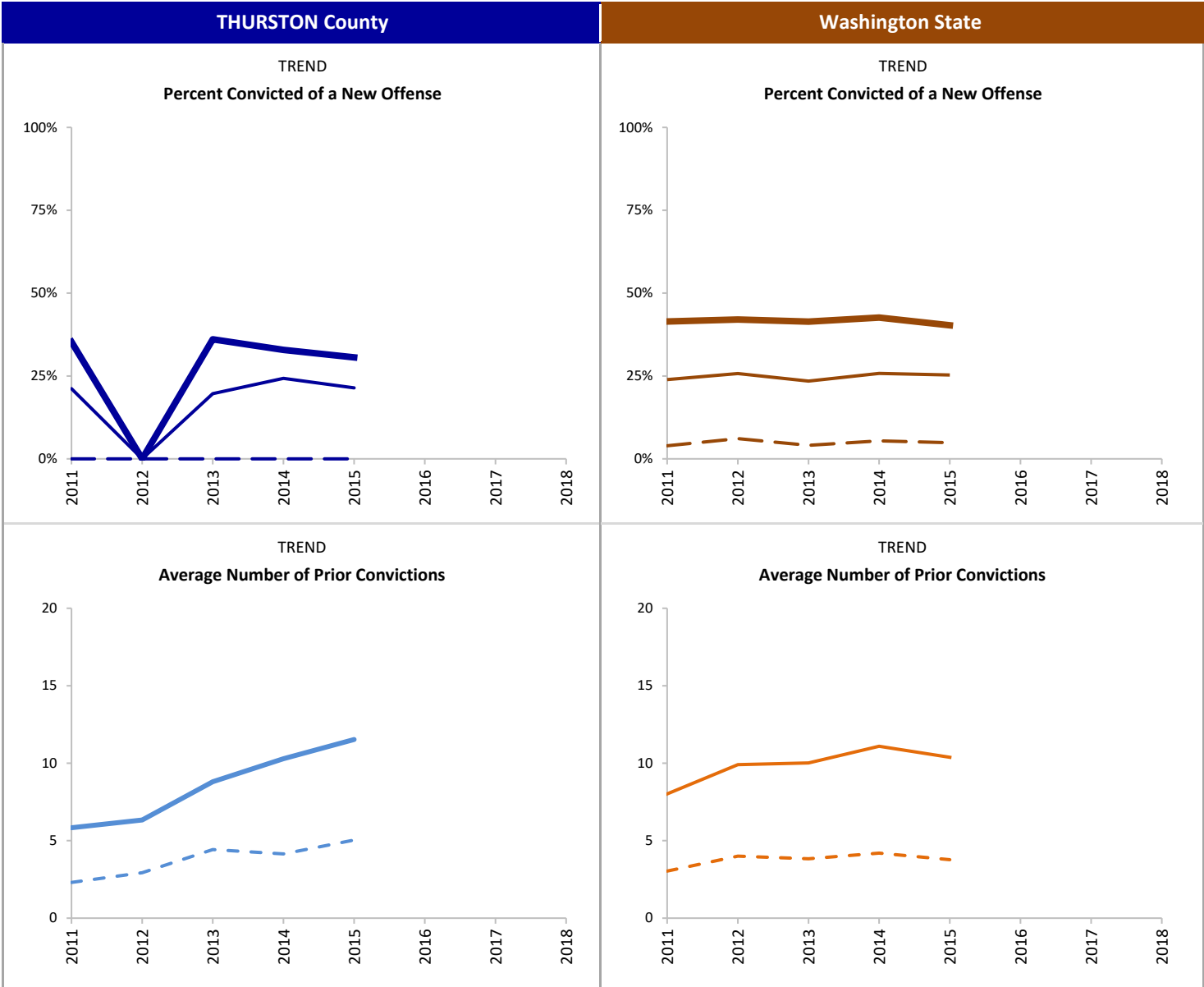
- █ Any Prior
- █ Felony Prior

**INDICATOR**

Percent of drug court participants convicted of a new offense, committed within 36-months after starting substance use disorder treatment. Average number of prior convictions is based on a count of each charge that resulted in a conviction prior to starting treatment.

**SOURCE & POPULATION**

DSHS Integrated Client Databases. Drug Court participants who started substance use disorder treatment.





SUPPORTING TABLES | 36-Month Recidivism and Prior Convictions

CALENDAR YEAR	THURSTON County								Washington State							
	2011	2012	2013	2014	2015	2016	2017	2018	2011	2012	2013	2014	2015	2016	2017	2018
<b>Total New Enrollment</b>	85	60	61	70	98				1,166	1,196	1,104	1,288	1,154			
<b>NEW Conviction (36-Months)</b>																
<b>Any Crime</b>	35%	--	36%	33%	31%				41%	42%	41%	43%	40%			
Total with Any Crime	30		22	23	30				483	503	457	549	465			
<b>Felony</b>	21%	--	20%	24%	21%				24%	26%	23%	26%	25%			
Total with a Felony	18		12	17	21				279	308	259	332	292			
<b>Violent Felony</b>	--	--	--	--	--				4%	6%	4%	5%	5%			
Total with a Violent Felony									46	73	45	70	56			
<b>Average Number PRIOR Convictions</b>																
<b>Any Crime</b>	5.8	6.3	8.8	10.3	11.5				8.0	9.9	10.0	11.1	10.4			
Total with Any Crime	79	57	57	62	94				1,085	1,116	1,051	1,228	1,109			
<b>Felony</b>	2.3	2.9	4.4	4.1	5.0				3.2	4.2	4.1	4.4	4.0			
Total with Any Felony	57	44	48	48	78				854	947	876	1,043	922			
<b>Violent Felony</b>	--	--	--	0.3	0.2				0.2	0.2	0.2	0.2	0.3			
Total with a Violent Felony				12	17				143	187	178	220	192			
<b>Non-Violent Felony</b>	2.2	2.9	4.3	3.8	4.8				3.0	4.0	3.8	4.2	3.8			
Total with a Non-Violent Felony	57	44	48	48	78				854	947	876	1,043	922			
<b>Misdemeanor</b>	3.5	3.4	4.4	6.1	6.5				4.8	5.7	6.0	6.7	6.4			
Total with a Misdemeanor	69	49	54	62	90				995	1,047	991	1,170	1,049			

--Cells representing fewer than eleven individuals were suppressed to protect client confidentiality.



# THURSTON County

## Drug Court Substance Use Disorder Treatment Participation

[Back to Contents](#)

MARCH 2021

### Substance Use Disorder Treatment

**LEGEND**

**Engagement and Retention**

- █ Engaged in Treatment
- █ Retained in Treatment

**Primary Substance**

- █ Heroin/Other Opioids
- █ Methamphetamine

**Average Days of SUD Tx**

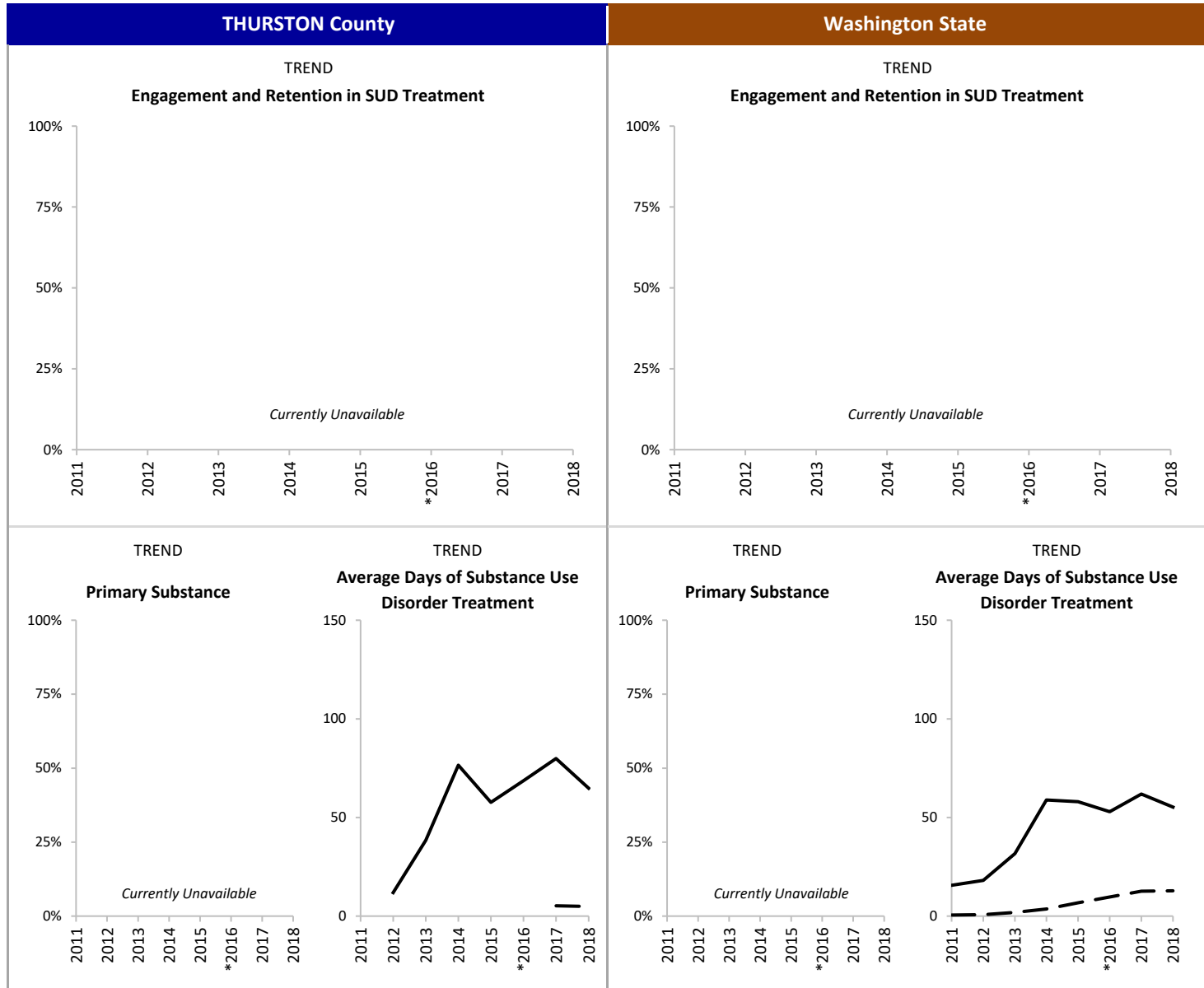
- █ Outpatient
- █ Inpatient

**INDICATOR**

Percent of drug court participants with Engagement and Retention in substance use disorder treatment. Engagement is defined as initiating treatment and receiving two additional services within 30 days after initiation. Retention is defined as receiving treatment services at least once per month for the first 90 days after initiation (see Technical Notes for full definition).

**SOURCE & POPULATION**

DSHS Integrated Client Databases. Drug Court participants who started substance use disorder treatment.



SUPPORTING TABLES | Substance Use Disorder Treatment

CALENDAR YEAR	THURSTON County								Washington State							
	2011	2012	2013	2014	2015	*2016	2017	2018	2011	2012	2013	2014	2015	*2016	2017	2018
<b>Total New Enrollment</b>	85	60	61	70	98	71	95	83	1,166	1,196	1,104	1,288	1,154	1,112	1,086	931
<b>Engagement and Retention</b>																
<b>Engagement</b>																
Total Engaged in Treatment	Currently Unavailable								Currently Unavailable							
<b>Retention</b>																
Total Retained in Treatment																
<b>Primary Substance</b>																
<b>Heroin and Other Opioids</b>																
Total Heroin and Other Opioids																
<b>Methamphetamine</b>																
Total Methamphetamine	Currently Unavailable								Currently Unavailable							
<b>Cannabis</b>																
Total Cannabis																
<b>Alcohol</b>																
Total Alcohol																
<b>Type of SUD Treatment</b>																
<b>Outpatient Treatment</b>	--	22%	59%	73%	74%	92%	93%	82%	23%	26%	52%	75%	82%	87%	90%	88%
Number in Outpatient Tx		13	36	51	73	65	88	68	266	310	576	972	941	965	973	816
Average Days in Outpatient Tx		11.9	38.5	76.5	57.7	68.6	79.9	64.8	15.6	18.1	31.7	58.9	58.0	52.9	61.9	55.3
<b>Inpatient Treatment</b>	--	--	--	--	--	N/A	22%	13%	2%	1%	3%	7%	14%	N/A	37%	34%
Number in Inpatient Tx							21	11	18	16	36	94	165		406	321
Average Days in Inpatient Tx							5.2	4.9	0.5	0.8	1.9	3.6	6.7		12.6	12.8
<b>Medication Assisted Treatment</b>	--	--	--	--	--	--	13%	18%	1%	1%	1%	2%	9%	16%	24%	31%
Number in Medication Assisted Tx							12	15	11	11	16	31	99	179	258	284

\*Incomplete due to changes in reporting systems resulting from the integration of behavioral and physical health care services. See technical notes for details.

--Cells representing fewer than eleven individuals were suppressed to protect client confidentiality.



# THURSTON County

## Drug Court Employment and Earnings

### Employment and Earnings

**LEGEND**

**Employment**

- Baseline
- - - 18-Months Post

**Earnings**

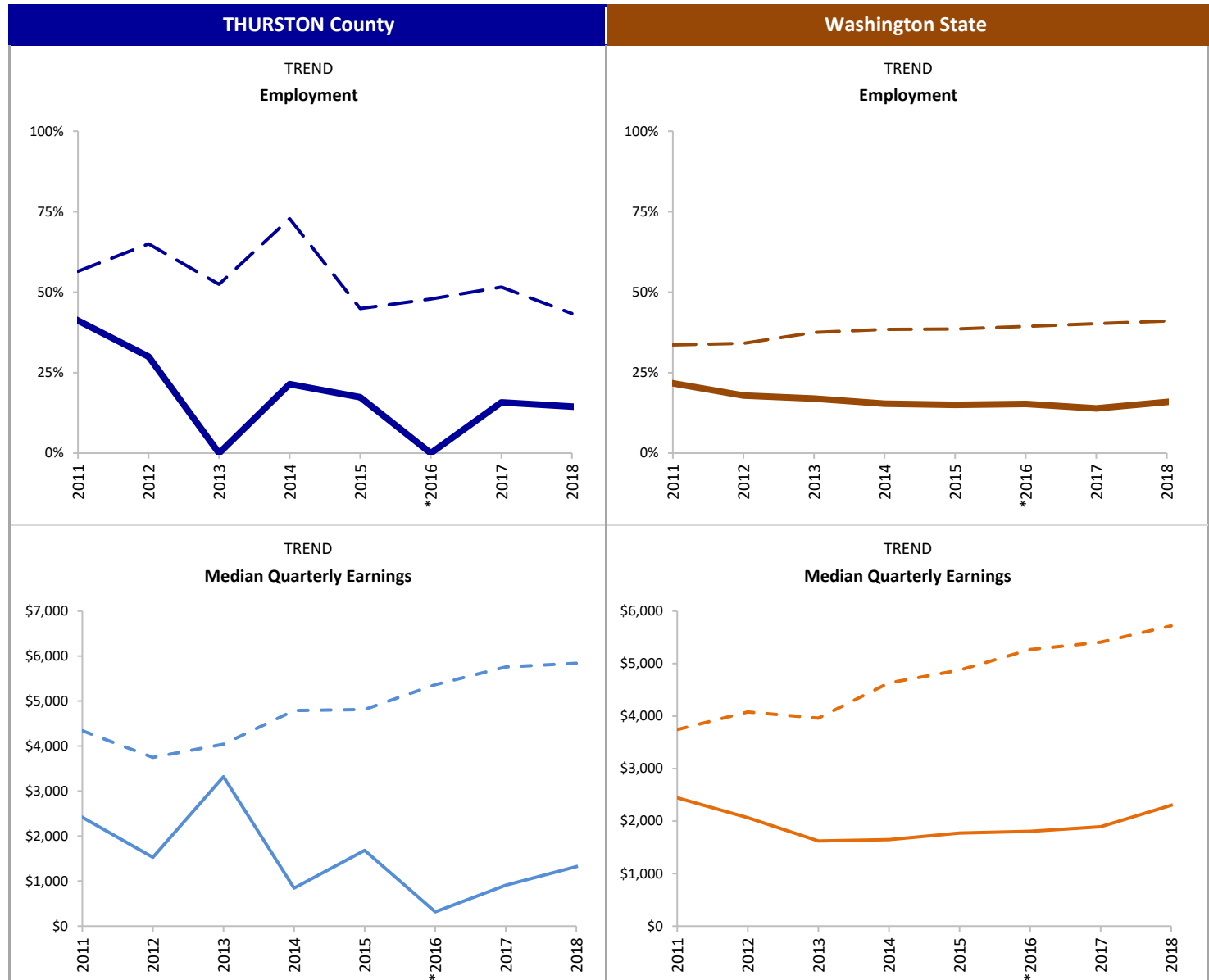
- Baseline
- - - 18-Months Post

**INDICATOR**

Percent of drug court participants employed part-time or full-time at baseline and 18-months after starting substance use disorder treatment. Baseline includes individuals with any employment in the quarter prior to starting treatment. Individuals were considered employed 18-months post if they had any earnings in the 6th quarter (18-months) after starting treatment. Median quarterly earnings is calculated only for those with non-zero earnings in the quarter.

**SOURCE & POPULATION**

DSHS Integrated Client Databases. Drug Court participants who started substance use disorder treatment.



SUPPORTING TABLES | **Employment**

CALENDAR YEAR	THURSTON County								Washington State							
	2011	2012	2013	2014	2015	*2016	2017	2018	2011	2012	2013	2014	2015	*2016	2017	2018
<b>Total New Enrollment</b>	85	60	61	70	98	71	95	83	1,166	1,196	1,104	1,288	1,154	1,112	1,086	931
<b>Employed Prior to Enrollment</b>																
Percent Employed Baseline	41%	30%	--	21%	17%	--	16%	14%	22%	18%	17%	15%	15%	15%	14%	16%
Number Employed at Baseline	35	18		15	17		15	12	253	214	187	198	173	170	151	148
Median Qtrly Earnings Baseline	\$ 2,419	\$ 1,530	\$ 3,320	\$ 845	\$ 1,685	\$ 317	\$ 908	\$ 1,322	\$ 2,444	\$ 2,066	\$ 1,622	\$ 1,647	\$ 1,772	\$ 1,806	\$ 1,892	\$ 2,303
Median Qtrly Hours Worked Baseline	180	140	283	71	163	28	77	97	197	186	138	132	145	139	151	145
<b>Employed 18 Months After Enrollment</b>																
Percent Employed 18-Months Post	56%	65%	52%	73%	45%	48%	52%	43%	34%	34%	38%	38%	39%	39%	40%	41%
Number Employed 18-Months Post	48	39	32	51	44	34	49	36	392	408	414	495	445	438	437	382
Median Qtrly Earnings 18-Mos. Post	\$ 4,343	\$ 3,748	\$ 4,043	\$ 4,790	\$ 4,815	\$ 5,365	\$ 5,758	\$ 5,841	\$ 3,743	\$ 4,078	\$ 3,961	\$ 4,633	\$ 4,876	\$ 5,268	\$ 5,408	\$ 5,719
Median Qtrly Hours 18-Mos. Post	358	370	346	386	359	387	424	389	328	366	325	355	357	369	352	377

\*Incomplete due to changes in reporting systems resulting from the integration of behavioral and physical health care services. See technical notes for details.

--Cells representing fewer than eleven individuals were suppressed to protect client confidentiality.



# THURSTON County

## Drug Court Medicaid Enrollment

[Back to Contents](#)

MARCH 2021

### Medicaid Enrollment

**LEGEND**

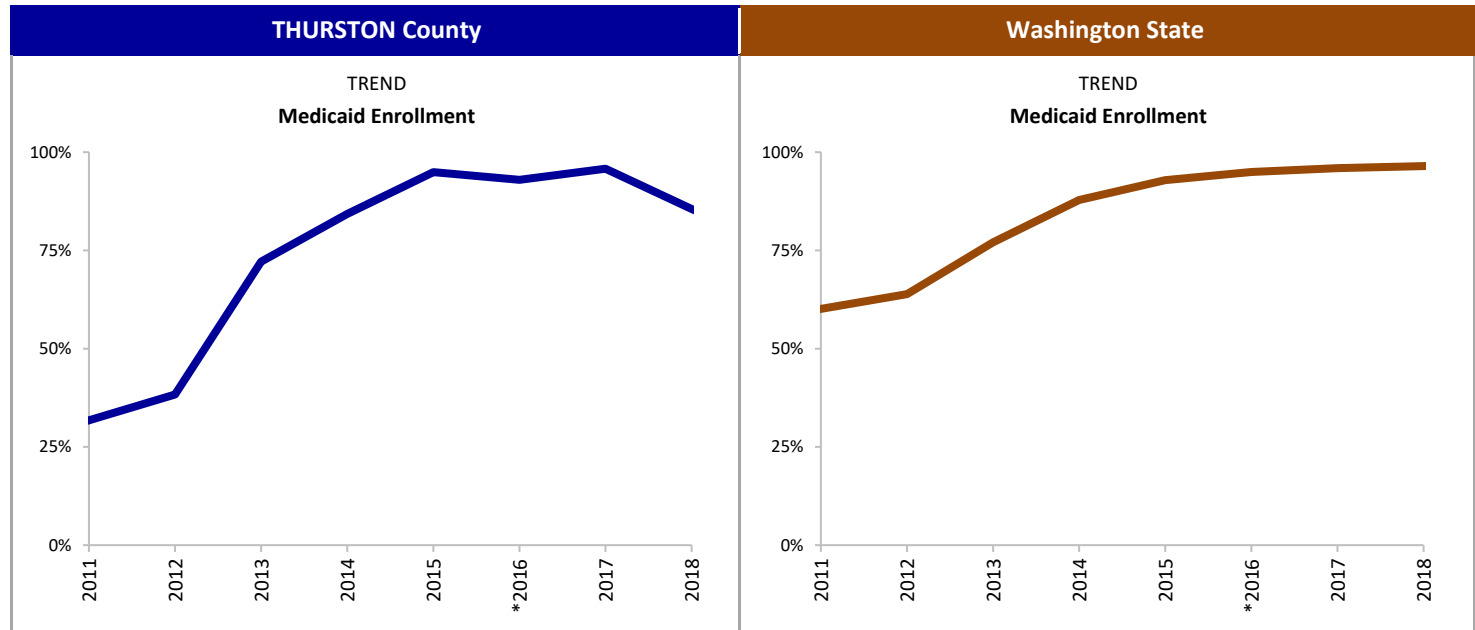
■ Percent Enrolled in Medicaid

**INDICATOR**

Percent of drug court participants enrolled in Medicaid at any point during the 12-months after starting substance use disorder treatment.

**SOURCE & POPULATION**

DSHS Integrated Client Databases. Drug Court participants who started substance use disorder treatment.



\*Incomplete due to changes in reporting systems resulting from the integration of behavioral and physical health care services. See technical notes for details.

### SUPPORTING TABLES | Medicaid Enrollment

CALENDAR YEAR	THURSTON County								Washington State							
	2011	2012	2013	2014	2015	*2016	2017	2018	2011	2012	2013	2014	2015	*2016	2017	2018
<b>Total New Enrollment</b>	85	60	61	70	98	71	95	83	1,166	1,196	1,104	1,288	1,154	1,112	1,086	931
<b>Medicaid Enrollment</b>																
Percent Enrolled in Medicaid	32%	38%	72%	84%	95%	93%	96%	86%	60%	64%	77%	88%	93%	95%	96%	96%
Number Enrolled in Medicaid	27	23	44	59	93	66	91	71	701	764	851	1,131	1,072	1,056	1,042	898



# THURSTON County

## Drug Court Participants: Recidivism and Key Outcome Measures

[Back to Contents](#)

MARCH 2021

### TECHNICAL NOTES

#### POPULATION

- **Total New Enrollment:** Includes all new drug court participants who started substance use disorder treatment within 12-months of their drug court start date. The dashboard indicators are based on the enrolled population. Blank cells indicate data were missing or suppressed due to fewer than 10 enrolled participants.
- The decrease in new enrollment in 2016 is due to underreporting of treatment records during the implementation of a new behavioral health data system and the integration of behavioral and physical health care. It should not be interpreted as a decrease in the number of individuals participating in drug courts. Future updates will address this shortcoming with available data.

#### INDICATORS

- **Recidivism:** Defined as a new conviction for an offense that occurred 18- or 36-months after the month the participant started substance use disorder treatment. The conviction may occur anytime after the offense date. The average number of prior convictions is based on a count of all charges that resulted in a conviction for offenses that occurred prior to the treatment start date. Conviction data were obtained from the Administrative Office of the Courts.
- **Substance Use Disorder Treatment:** The Washington Circle Measure of Engagement is defined as initiating substance use disorder treatment and receiving two additional services within 30 days of initiation. Retention is an additional measure used in Washington State which is defined as receiving treatment services at least once per month for the first 90 days after initiation, or completing treatment and being discharged within 90 days, or transferring to a residential treatment facility within 90 days. Engagement and Retention measures are calculated only for those whose first treatment episode was an outpatient service. Data from the Treatment and Assessment Report Generation Tool (TARGET) and the Behavioral Health Data System (BHDS) were used to identify substance use disorder treatment, primary substance and average days of treatment. Treatment shown is not necessarily the treatment approved by the court. Due to changes in the behavioral health data system, the engagement and retention measures are not currently available.
- **Employment:** Quarterly employment and earnings data were obtained from the Washington State Employment Security Department. Median quarterly earnings and hours worked is reported only for individuals with non-zero earnings during the quarter.
- **Medicaid Enrollment:** Obtained from eligibility codes available in the DSHS Integrated Client Database (ICDB).

#### DATA SOURCES

- DSHS Integrated Client Database
- Washington State Drug Courts
- Drug Court Case Management System (DCCM)
- Administrative Office of the Courts Adult Drug Court Docket Codes

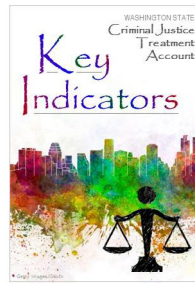
#### MISSING DATA

- Klickitat, Pacific, Skagit and Whitman county drug court data are missing for 2016.

# THURSTON County

## Drug Court Participants: Recidivism and Key Outcome Measures

MARCH 2021



### CONTRIBUTORS

Tasha Fox, RDA • Paula Henzel, RDA • Jim Mayfield, RDA • Callie Black, RDA • Barbara E.M. Felver, RDA

<https://www.dshs.wa.gov/rda>